



GENERAL NOTES

Drawing to be read in conjunction with all information by architects, structural engineer & service consultants.

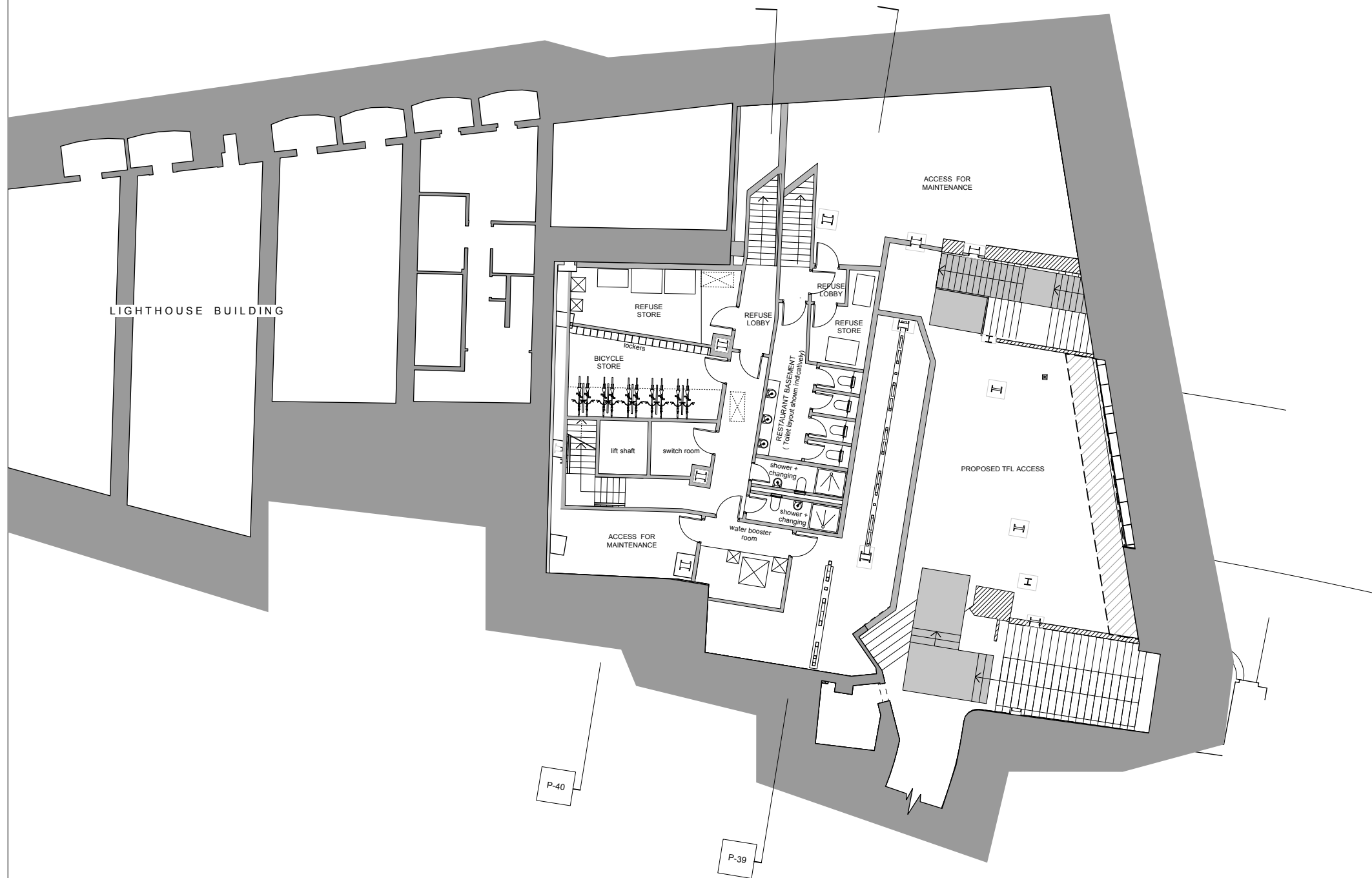
The contractor is not to scale from this drawing. All written dimensions to be checked on site before work commences. Discrepancies, where identified, must be reported to the architect immediately.

This drawing is the property of Latitude Architects and Designers and must not be reproduced or disclosed to any unauthorised person either wholly or in part without written consent.

NOTE:

ALL AREAS ARE INDICATIVE AND CONTINGENT ON DESIGN TEAM COMMENTS AND SUBSEQUENT DEVELOPMENT.

AREAS:	AREAS:	AREAS:
A1 / A3 GEA- 38 M ² .	A1 / A3 GIA- 33 M ² .	A1 / A3 NIA- 17 M ² .
OFFICE GEA- 115 M ² .	OFFICE GIA- 104 M ² .	OFFICE NIA- 0 M ² .
TFL GEA- 147 M ² .	TFL GIA- 147 M ² .	



PROPOSED BASEMENT PLAN

Issue	Chkd	Drawn	Date	Description
G	AG	BM	20/02/17	MMA Issue. Separate bin stores to office and retail added. Cycle shower & changing added.
F	AV	BM	27/01/17	Bike wheelway to stairs to basement added.
E	AG	BM	17/01/17	Refuse store, bicycle store, switch room, water booster room layouts revised to team comments.
D	AG	BM	12/01/17	Retail stairs revised. Retail and office layout revised.
C	AG	AV	06/01/17	Issued for revised Stage 3 and MMA application
B	AG	AV	04/11/16	Basement layout revised. Alternate escape route for TFL indicated. Office and Restaurant basement areas added.
A	AG	AV	22/11/13	Issued for Planning

Status	Job No.	Drwg No.	Issue
PLANNING	1209	P30	G

Drawing 1:200@A3 1:100@A1

PROPOSED BASEMENT PLAN

Project
KINGS CROSS BRIDGE
LONDON WC1X