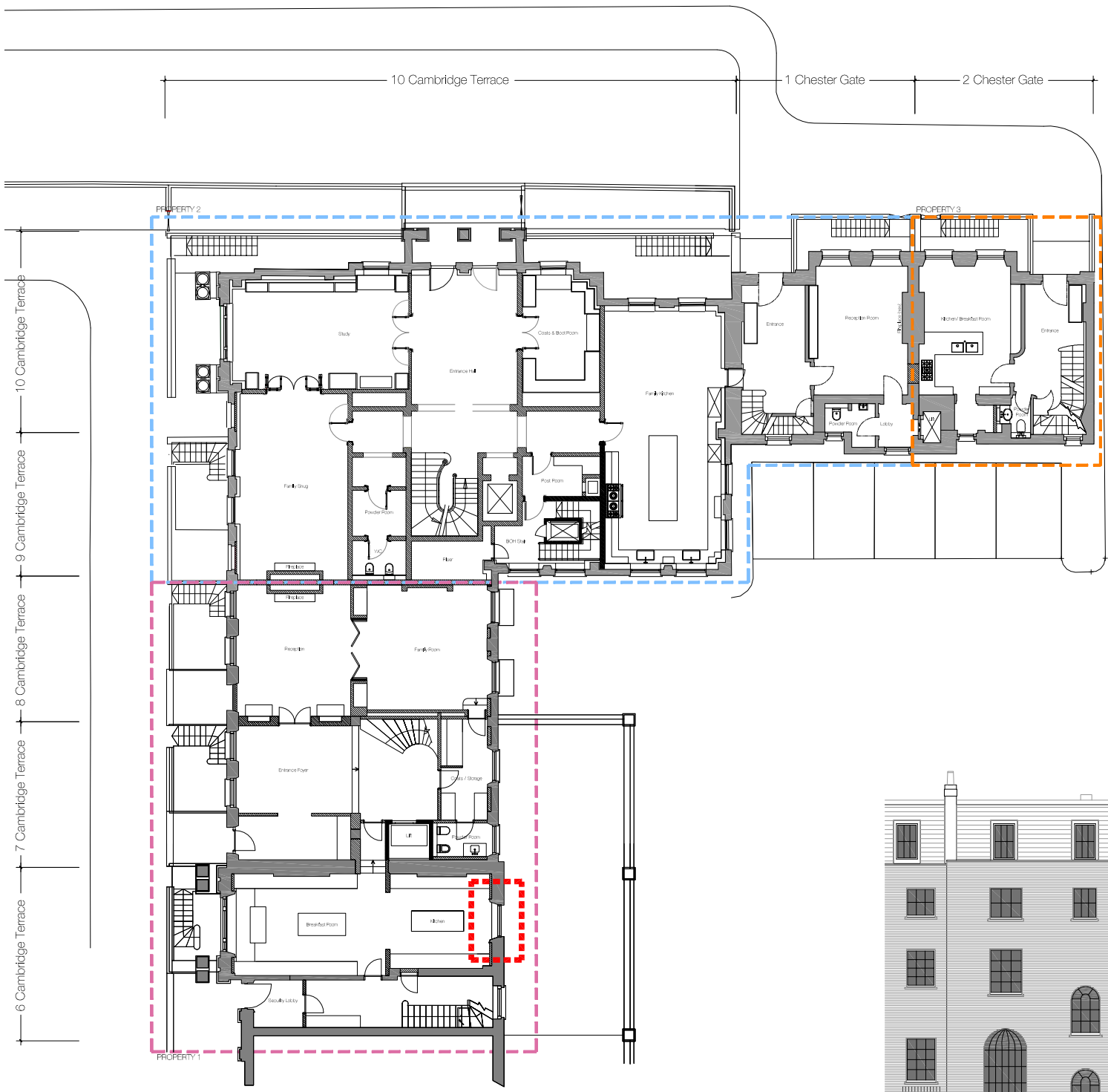


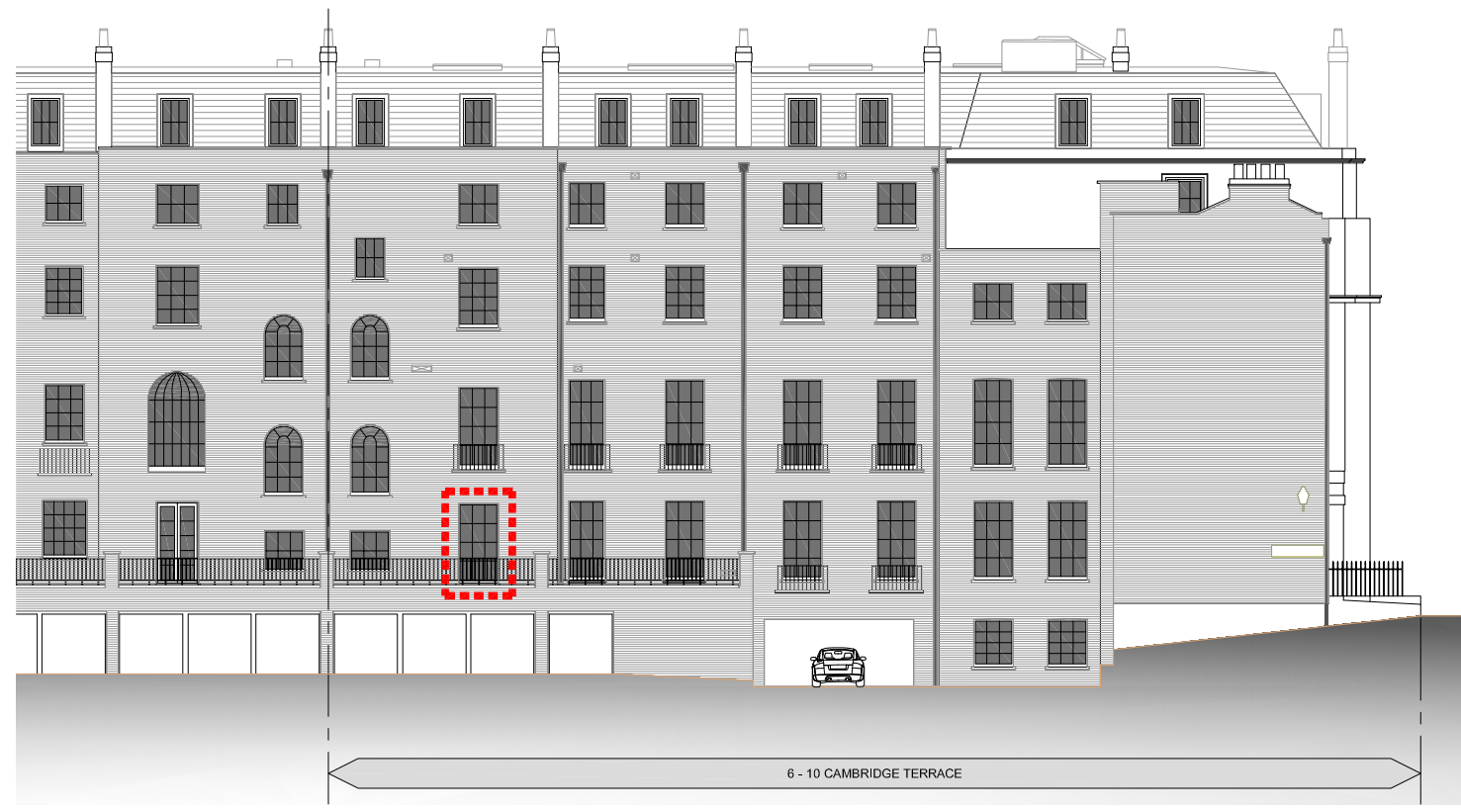
DISCLAIMER
In accordance with our duties under the Medicines Act 1987 and the Medicines Act 1991, these details have been prepared in good faith but are not intended to constitute part of an offer of contract or create any contractual relationship. No description or information of any kind provided by CPC London or its Agents, whether written or verbal, contained in these Particulars or otherwise, shall constitute an offer or be taken as an assessment of representation, warranty or fact. Neither CPC London nor its Agents have any authority to make any representation or warranty and accordingly any information given orally without responsibility on the part of CPC London or its Agents of the said. Any plans, photos, and computer-generated images shown are indicative and cannot be guaranteed to represent the complete and final location of a scheme. Any Areas, measurements or distances given are approximate only. Any products and materials shown or indicated are indicative only and may be subject to variations or changes. It is not possible to scale from these drawings. Any reference to illustrations or use of any part of the property is not a statement that any necessary planning, building regulations or other consent has been obtained. These matters must be verified by any buyer/borrower. Any buyer/borrower must satisfy himself/herself by inspection or otherwise as to the correctness of any information given.
© All rights reserved to CPC London.

NOTES
PROPOSED LOCATION OF SWINGING SASH WINDOW

■ PROPOSED LOCATION OF SWINGING SASH WINDOW
 PROPERTY 1
 PROPERTY 2
 PROPERTY 3
 EXISTING WALL
 PROPOSED WALL
 0 1 2 3 4 5 6 METRES



Ground Floor Key Plan
1:250



Rear Key Elevation
1:250

REV	BY	DATE	DESCRIPTION

PROJECT CODE:
Project Quad
PROJECT TITLE:
6 - 10 Cambridge Terrace
and 1-2 Chester Gate
Regents Park
London NW1

DRAWING TITLE:
Key Plan
Ground Floor and Rear Elevation
Swinging Sash Door

DESIGNED BY: NC	CHECKED BY: AK
REVISIONS: PLANNING	
SCALE: AS TITLED	DATE: JAN 17
DESIGNED BY: SK01	REVISIONS: -