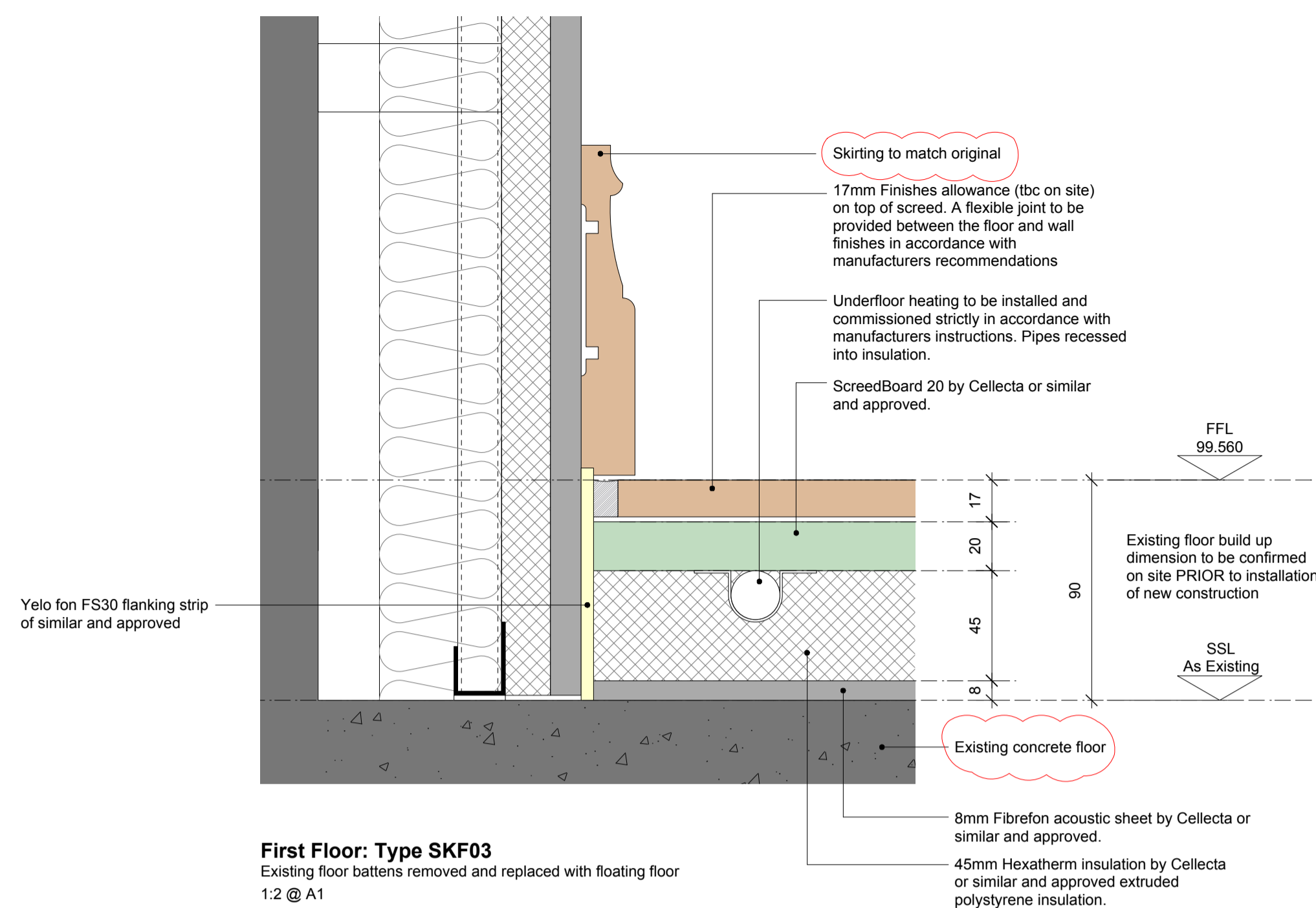
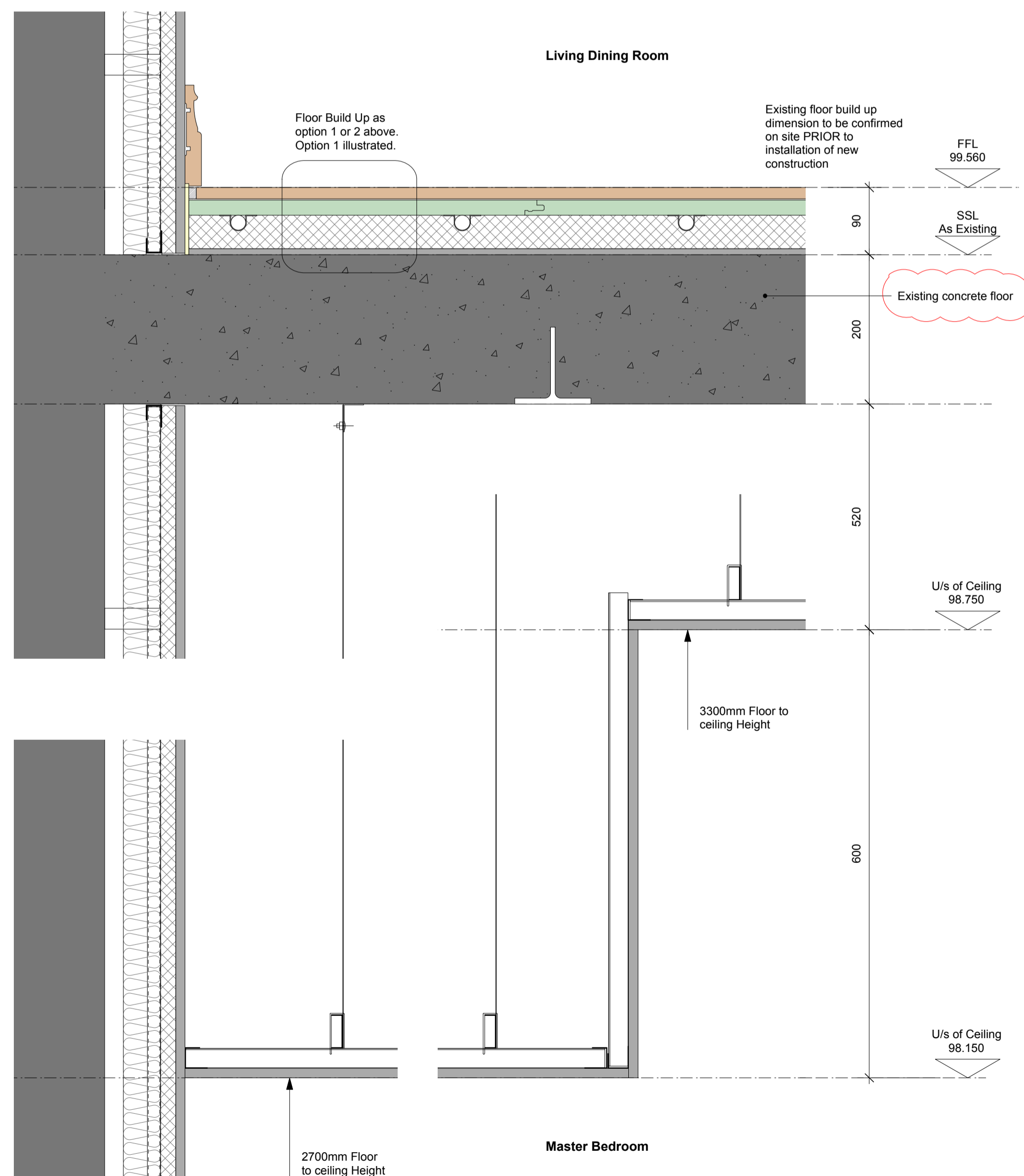


Notes:

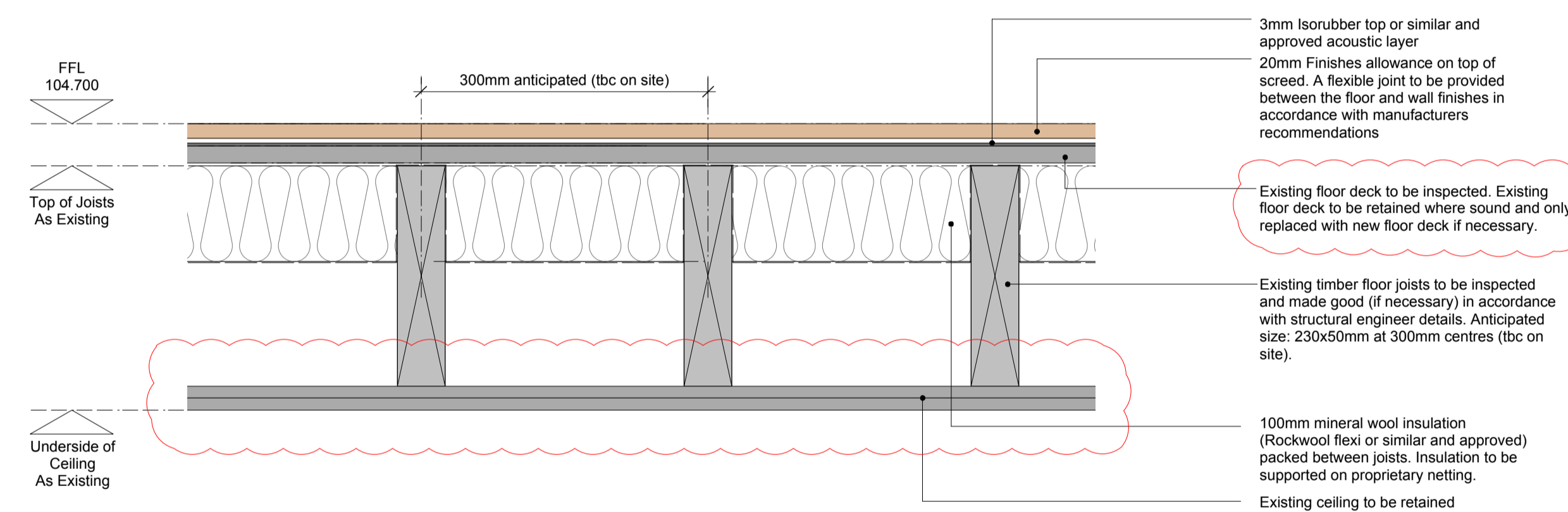
1. ALL existing constructions, structure, build ups etc are to be confirmed on site PRIOR to proceeding with the work.
2. This drawing is to be read in conjunction with all relevant Architect GA drawings and specifications.
3. This drawing is to be read in conjunction with all relevant drawings and specifications produced by the structural engineer and M&E consultant.
4. This drawing is to be read in conjunction with the relevant fabric survey produced by ESG.
5. This drawing is to be read in conjunction with the relevant condition investigation report produced by Hutton & Rostron.



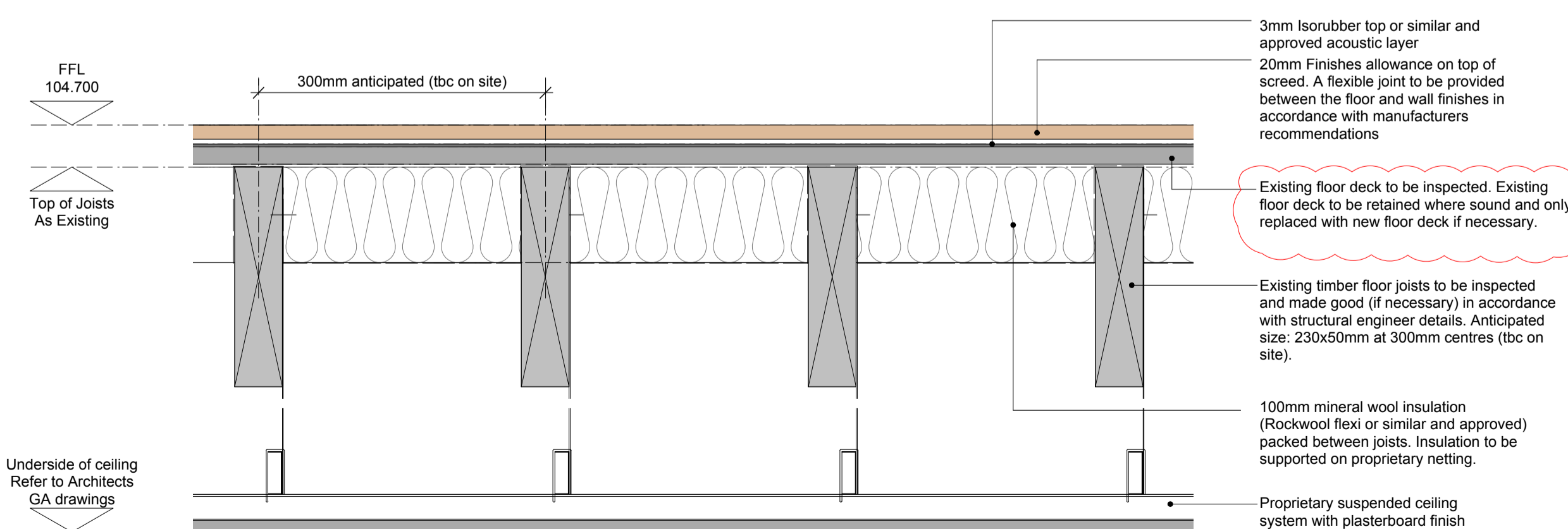
First Floor: Type SKF03
Existing floor battens removed and replaced with floating floor
1:2 @ A1



Detail 2: Typical Section through First Floor
1:5 @ A1



Detail 3: Floor Type SKF04, Second Floor Upgrade - Over Living Room
1:5 @ A1



Detail 4: Floor Type SKF07, Second Floor Upgrade - Over Corridor
Existing floor joists retained
1:5 @ A1

CONSTRUCTION

REVISION	DRN	CHKD	DATE
T1 First Issue	ST	TW	18.11.16
C1 Construction Issue	ST	TW	12.12.16
C2 Amendments resulting from meeting with the planners 25.01.17	ST	TW	25.01.17



PROJECT
KIDDERPORE AVENUE

DRAWING
Skeel Library
Upper Floor Details

SCALE	DATE
1:5 @ A1	Nov 2016
DRAWING No.	DRAWN BY
15 230	ST
9000-DRG-00SK-DE006	REVISION
	C2