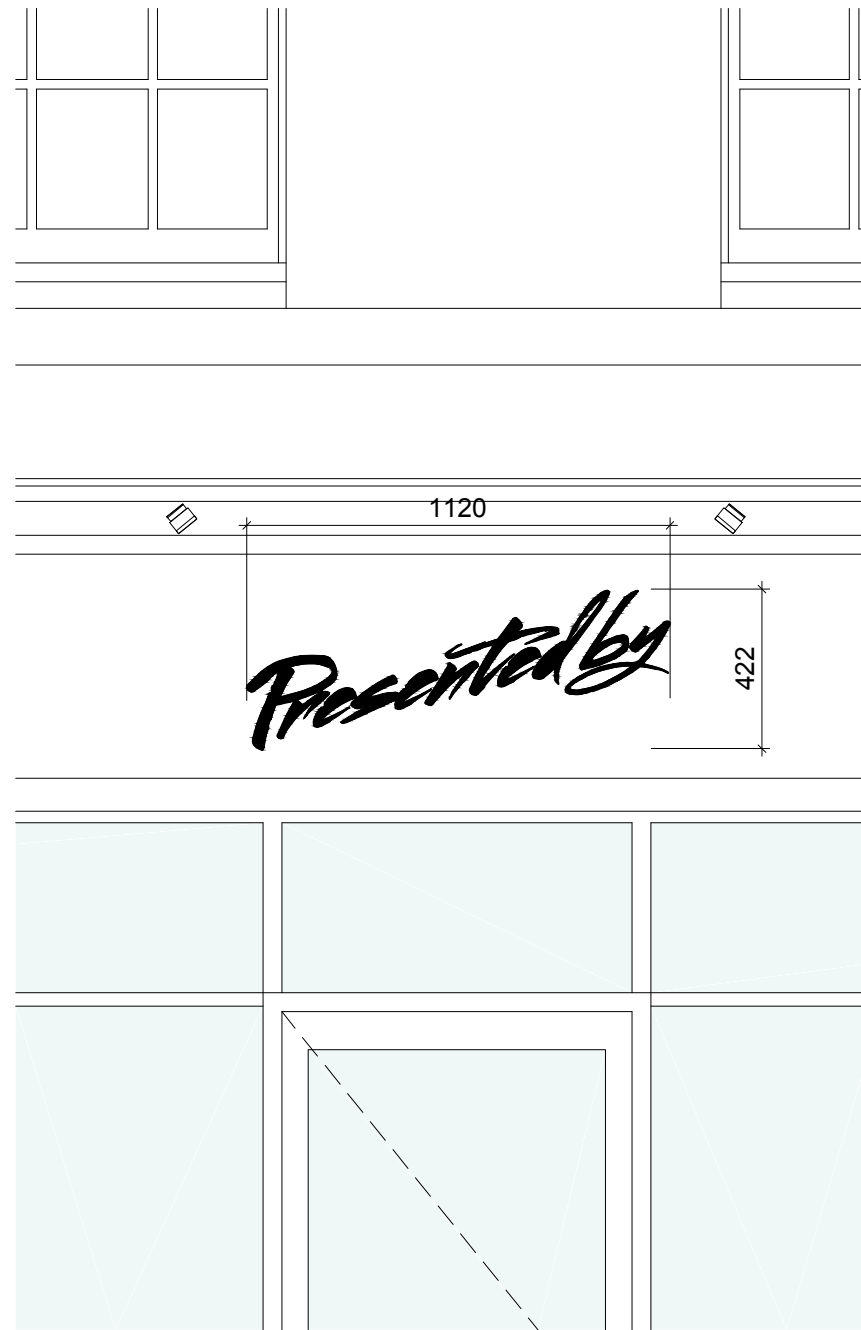
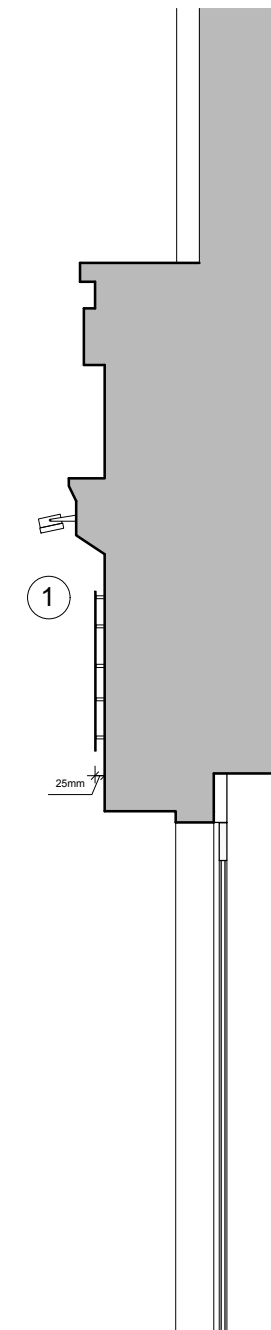




SHOPFRONT SIGNAGE @ 1:50



SHOPFRONT SIGNAGE @ 1:20



SECTION @ 1:20

PROPOSED SIGNAGE

New fixed fascia sign to be formed in flat 3mm laser cut stainless steel letters and fixed to existing fascia with concealed fixing bolts with 22mm stainless steel spacers, reversible. The sign is to be polyester powder-coated black to match the tone of the painted fascia so as to be visually discrete.

- ① The sign is to be toplit with two discrete black painted LED adjustable spotlights as described in the manufacturers literature which accompanies this application. These are fixed through the cornice with single cable way to match existing, all reversible. The illuminance level will be no greater than 600 cd/m. This will give limited light output onto the face of the sign so that it is legible against the matching background of the fascia.

The proposed dimensions are as indicated.

The use of this data by the recipient acts as an agreement of the following statements. Do not use this data if you do not agree with any of the following statements:-

All drawings are based upon site information supplied by third parties and as such their accuracy cannot be guaranteed. All features are approximate and subject to clarification by a detailed topographical survey, statutory service enquiries and confirmation of the legal boundaries.

Do not scale except for the purposes of planning.

Report any discrepancies in writing to Palmer Lunn Architects before proceeding.

P04	planning	21.02.2017	APa	MLu
P03	planning	27.01.2017	APa	MLu
P02	planning	23.12.2016	APa	MLu
P01	first issue	06.12.2016	APa	MLu

Rev	Description	Date	Drn	Chk
-----	-------------	------	-----	-----

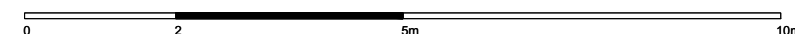
Status
PLANNING

Client
Build8

Project
Shop Refurbishment
15 Percy Street
London W1T 1DS

Drawing
SHOPFRONT SIGNAGE
as PROPOSED

Project No.	Drawing No.	Revision
16006	PCY-PL-012	P04
Scale @ A3	Drawn By	
1:50; 1:20	APa	



palmer lunn architects

www.palmerlunn.com