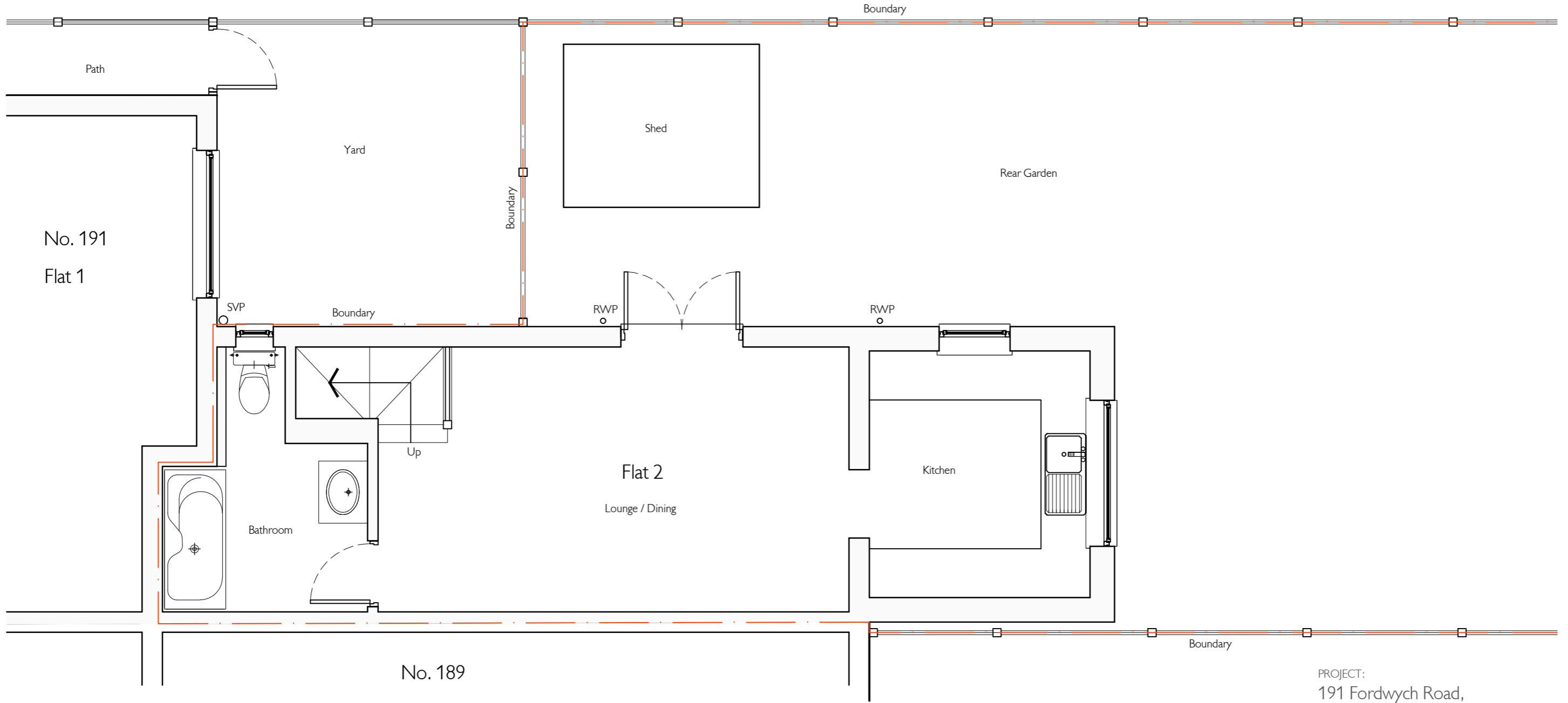


No. 193

COPYRIGHT ©
This drawing is copyright and issued to you in confidence. It must not be copied, used or disclosed, in whole or in part, to third parties without our written permission. It remains the property of JUSTIN SMITH ARCHITECTS LIMITED and must be returned on request. ©

NOTE: All dimensions are in millimetres unless stated otherwise. If in doubt ask. Do not scale from this drawing.

XREFS: Ex_plan_site, Ex_plan_0
DRAWINGS: A17-003/003
REVISIONS:



01
003 191 Fordwych Street, London
Existing Ground Floor Plan 1:50



PROJECT:
191 Fordwych Road,
London, NW2 3NH

CLIENT: Rob McGovern
PROJECT NUMBER: A17-003
DRAWING TITLE: EXISTING GROUND FLOOR PLAN

DRAWING NUMBER: 003
ISSUE STATUS: For Information
SCALE: 1:50
SHEET SIZE: A3
REVISION: -
DRAWN BY: SCG
DATE: Jan'17



01332 460044
www.justinsmitharchitects.co.uk
hello@justinsmitharchitects.co.uk
5 Queen Street
Derby, DE1 3DL

JUSTIN SMITH
ARCHITECTS