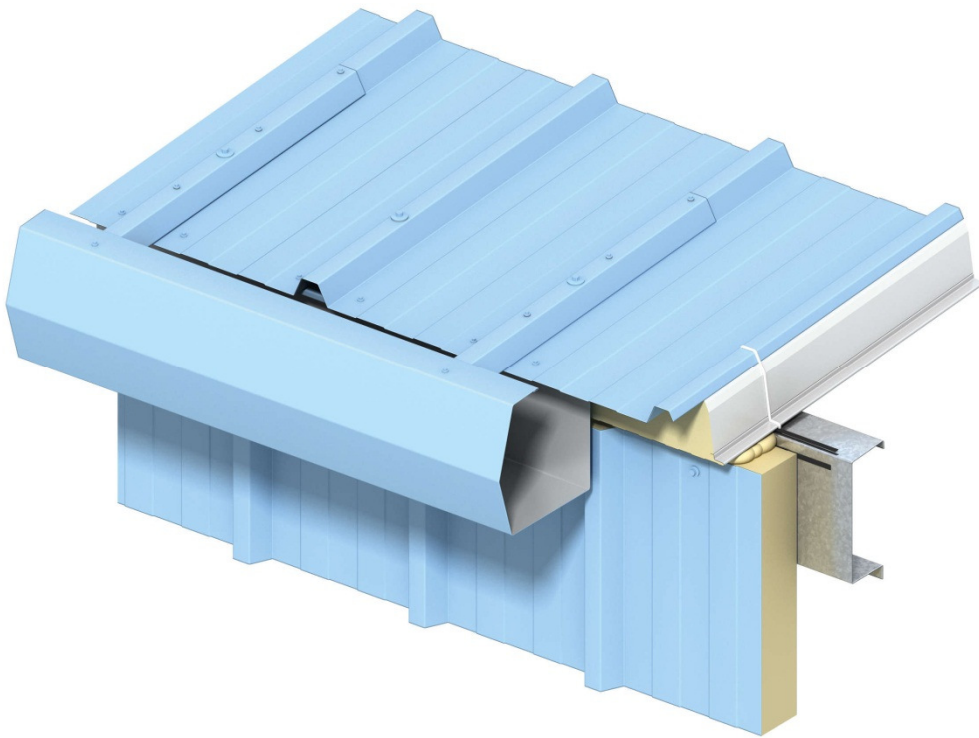


Insulated Roof & Wall Panels

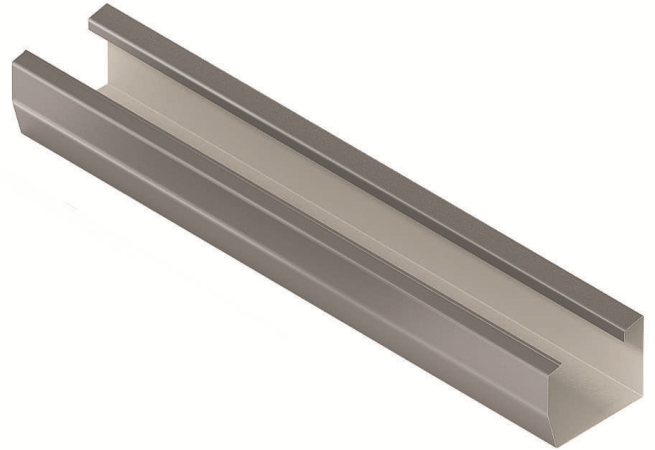
Product Data Sheet



Kingspan Highline Gutter

Applications

The Kingspan Highline Gutter is an attractive yet economic external gutter system to be used in conjunction with a range of Kingspan insulated roof panels. The gutter is fixed off the eaves of Kingspan panels via Kingspan gutter support arms.



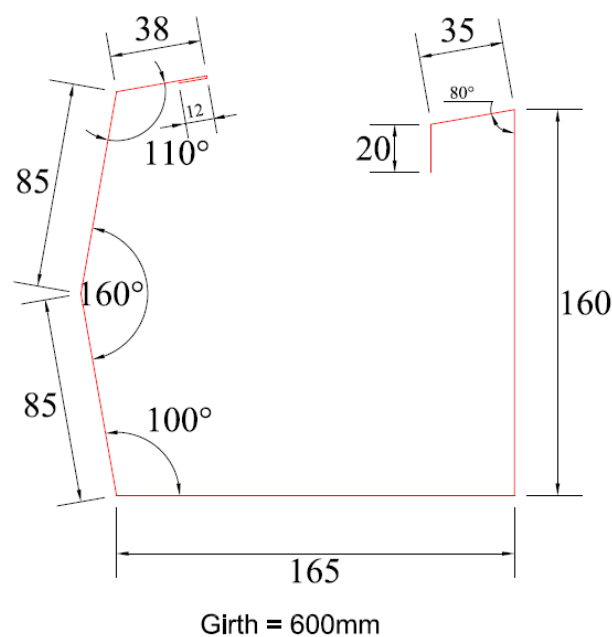
Available Lengths

Standard Lengths	500mm - 3000mm
Longer Lengths (non-standard)	3001mm - 8000mm

Dimensions

The Kingspan Highline Gutter is manufactured to suit each individual projects requirements, with gutters usually sized based on the roof pitch, so there is a standard size of gutter to suit the roof pitch. We can also manufacture gutters to non-standard sizes upon request.

Typical size Kingspan Highline Gutter based on 10 degree roof pitch:



Compatible Roof Systems

The Kingspan Highline Gutter is suitable for use with the below Kingspan Insulated Roof Panel Systems:

- KS1000 ZIP
- KS1000 RW
- KS1000 LP
- KS1000 DR
- KS1000 CR
- KS1000 SF
- KS1000 RT
- KS1000 TD
- KS1000 TS

Materials

The Kingspan highline gutters are manufactured with a double sided coating of 0.63mm thick coated steel with the following choice of coatings in a number of colours:

- Kingspan XL Forté: Consists of a multi-layer organic coating, embossed with a traditional leather-grain finish.
- Kingspan Spectrum: Consists of a coated semi-gloss finish with slight granular effect.
- Kingspan Altaris - Technically advanced PVDF multi-layer (up to 4 layers of paint) coatings featuring colour purity, strength, resistance and stability. This range provides unparalleled protection against environmental weathering and is available with a high gloss finish.
- Kingspan Destral - Matt polyester organic coatings that are ideal for the Kingspan Roof Tile System.

Weight

The weight of the Kingspan Highline Gutter varies depending on the overall girth of the gutter, a typical gutter girth is 600mm which weighs approximately 3kg/lm.

Product Tolerances

Cut to length: +/- 1mm

Angles: +/- 1 degree

Quality & Durability

Kingspan Highline Gutters are manufactured from the highest quality materials, using state of the art production equipment to rigorous quality control standards, complying with BS EN ISO 9001 standard, ensuring long term reliability and service life. They are also being manufactured under Environmental Management System Certification BS EN ISO 14001. Compliant to BS OHSAS 18001 Occupational Health and Safety

Packing

The Kingspan Highline gutters are packed onto wooden pallets, a foam spacer strip is placed between the run of gutters and they are wrapped in a protective poly and banded together to ensure secure packaging and to protect the gutters from damage in transit, offloading and storage on site.

Sea Freight

Fully timber crated packs are available on projects requiring delivery by sea freight shipping, at additional costs. Alternatively, steel containers can be used. Special loading charges apply

Delivery

All deliveries (unless indicated otherwise) are by road transport to project site. Off-loading is the responsibility of the client.

Site installation Procedure

The internal face of the Kingspan Highline Gutter will need to be painted on site with 2 coats of a bitumastic paint by the cladding/gutter installer, this should then be repeated annually.

Site assembly construction details are available from Kingspan envirocare Technical Services.

Guarantee

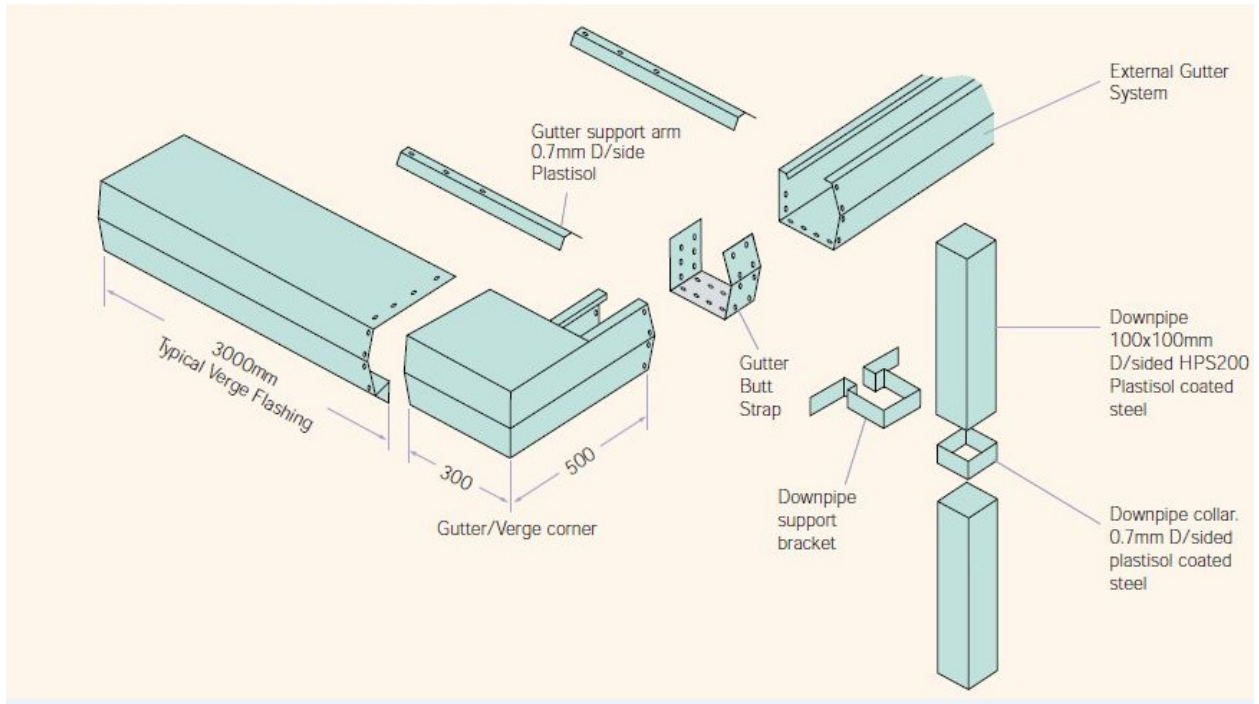
Kingspan Total Panel Guarantee covering the structural performance for a period of up to 10 years and also the Kingspan Coating Guarantee for a period of up to 10 years

Ancillary Items

Kingspan Highline Gutters can come with a number of ancillary items as listed below:

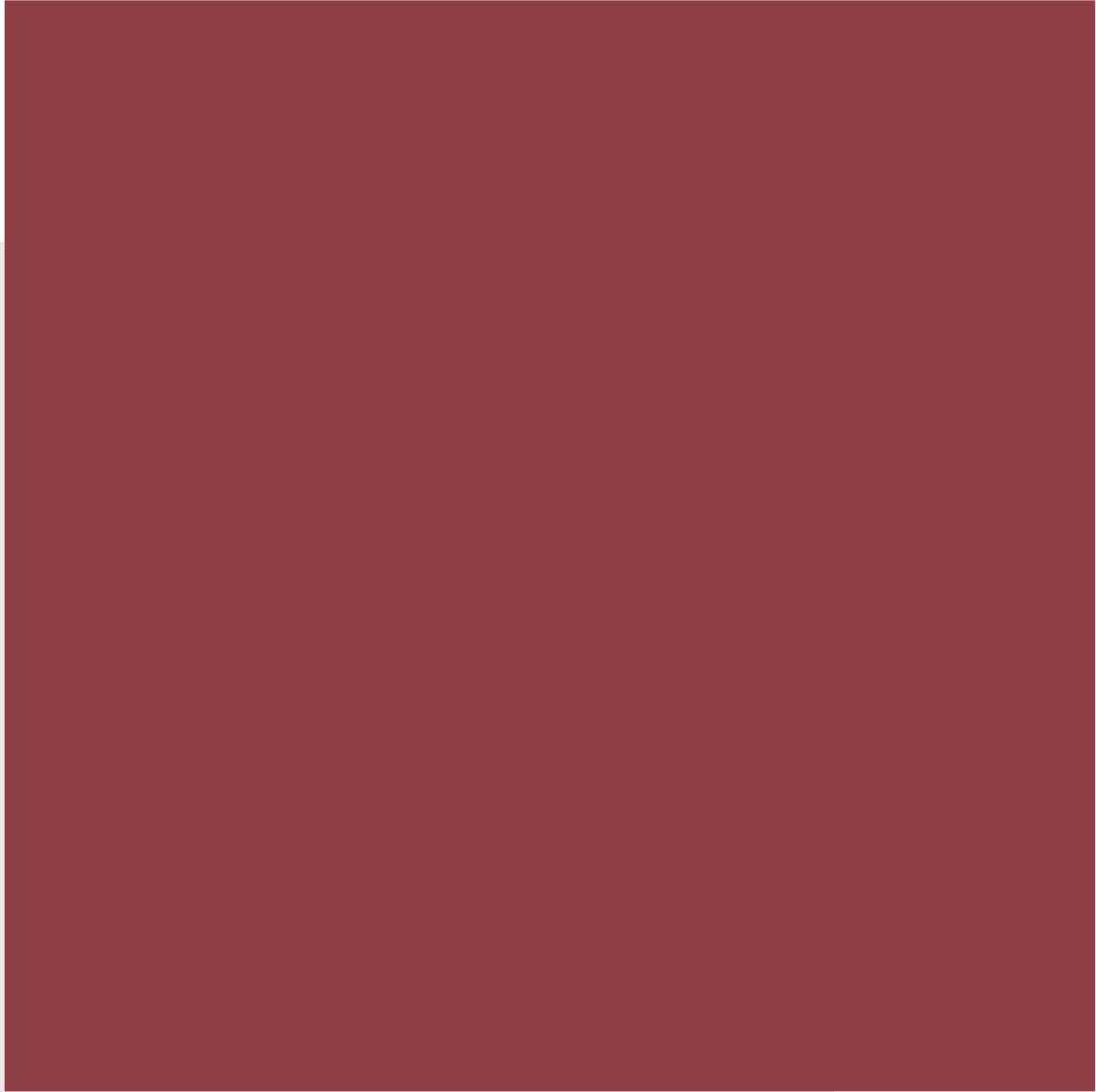
- Jointing Butt-straps, including fixings and sealant
- Gutter support arms
- Gutter to verge jointing pieces
- Downpipes, including swan necks, collars and base deflectors
- Downpipe support brackets
- Stop ends, loose and fitted.

Typical Highline Gutter ancillary items (for KS1000RW)



Highline Gutter

Product Data



Kingspan Limited

Greenfield Business Park No.2, Greenfield, Holywell, Flintshire, North Wales CH8 7GJ
t: +44 (0) 1352 716100 f: +44 (0) 1352 710161 www.kingspanpanels.com

Registered Office at Greenfield Business Park No.2, Greenfield, Holywell, Flintshire, N. Wales CH8 7GJ. Company Reg. No. 1037468

