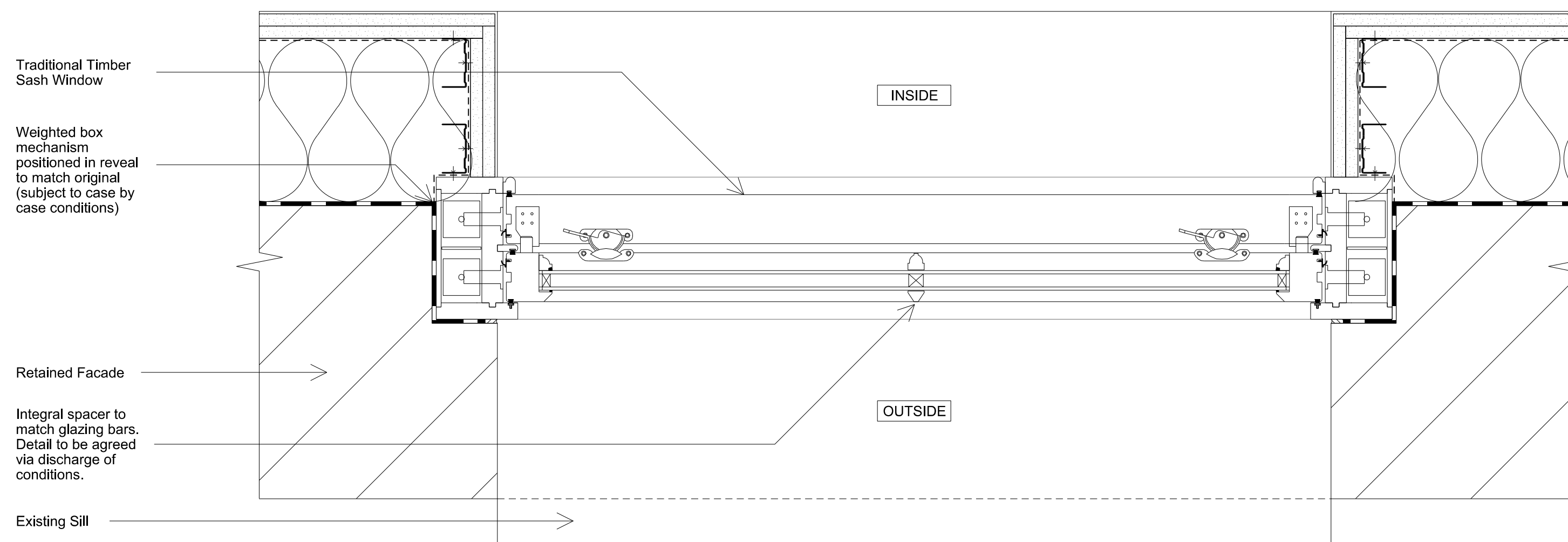
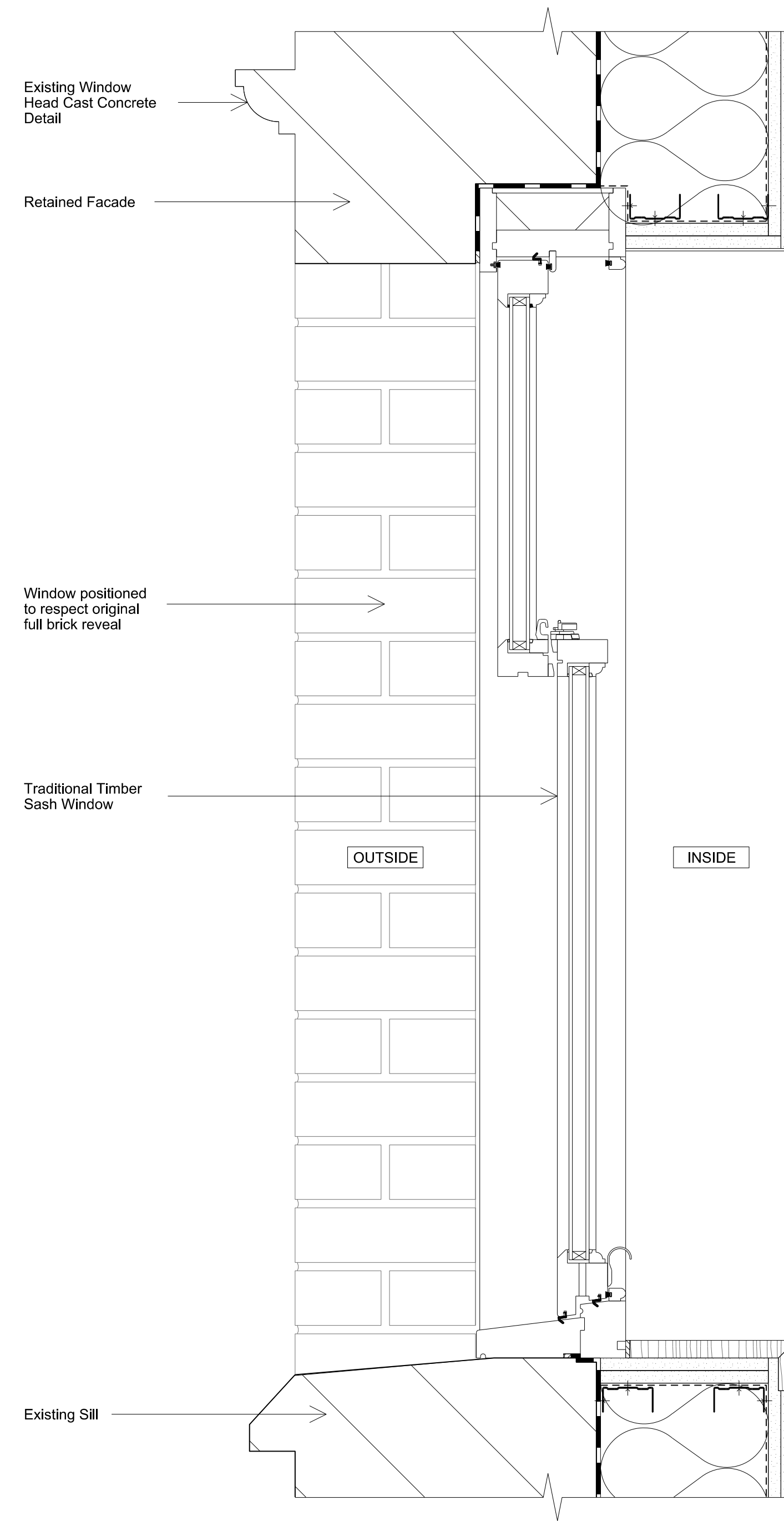


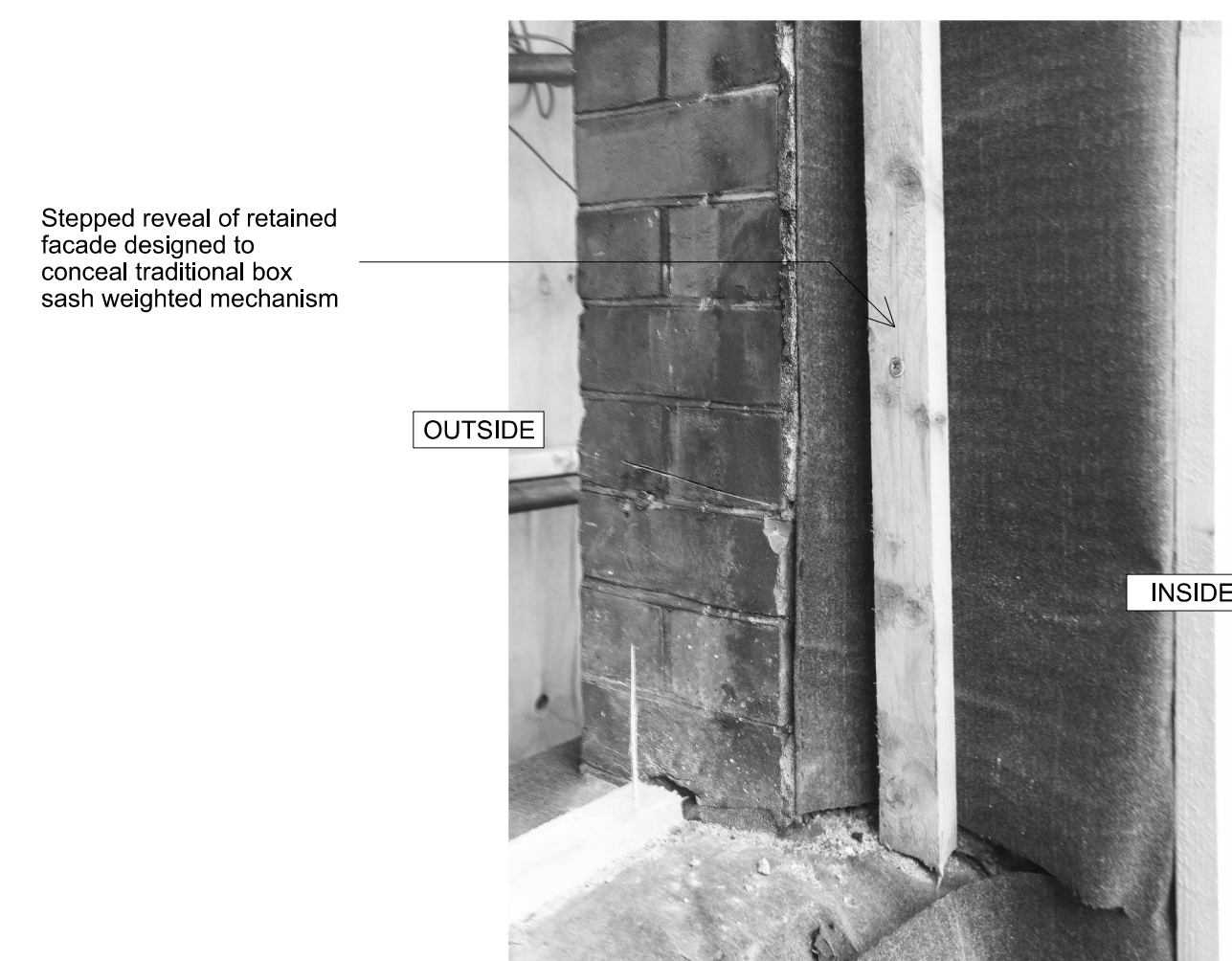
**01** Timber Sash Typical Elevation  
1:5



**03** Timber Sash Typical Plan  
1:5



**02** Timber Sash Typical Section  
1:5



**04** Photo of Retained Window Reveal  
1:5

General Note:  
Complete Facade to undergo general cleaning, restoration / remedial works and making good

Disclaimer  
Do not scale from this drawing.  
Check all dimensions on site before fabrication or setting out.  
This document is copyright and may not be reproduced without permission of the owner.

Notes  
For external spaces and landscape design, please refer to Landscape Designer's design & specification.  
Deflection is included within slab thickness.  
Below ground structure indicative only.

Key

Rev	Notes	Date	Dwn	Iss
01	Re issue for information	Feb 2017	RPP	RPP
00	Issue for information	02.02.17	RPP	RPP

Consultants  
Structural Engineer: AKT II  
M&E Engineer: Scotch & Partners  
Planning: DP9  
Daylight - Sunlight/ROL: Point 2 Surveyors  
Cost: Core 5  
Building Control: HCD  
Fire: JGA  
Landscape Designer: Andy Sturgeon



**Robin Partington & Partners**  
Castlewood  
35 New Oxford Street  
London  
WC1A 1DG  
+44 20 7419 3500  
mail@rpplondon.com  
www.rpplondon.com

Client  
**Londonewcastle**  
The Courtyard Building  
17 Evelyn Yard  
London W1T 1AU

Project			
<b>Parker House</b>			
Drawing Title External Envelope, Retained Facade L01 - L03 Typical Window Details			
Scale	Drawn By	Issued By	
1:5 @ A1	1:10 @ A3	RPP	RPP
SECOND STAGE TENDER			
Project No.	Drawing No.	Revision	
16002	A_SK_170202	00	