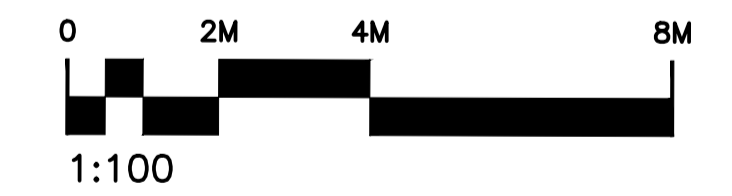
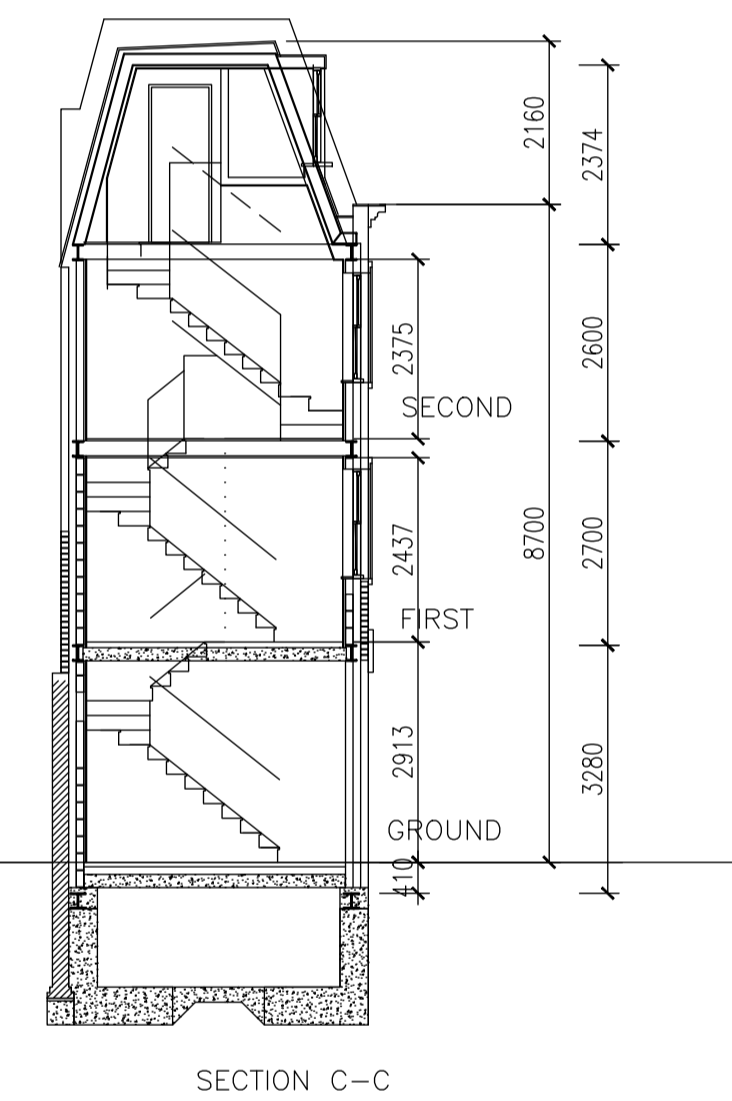
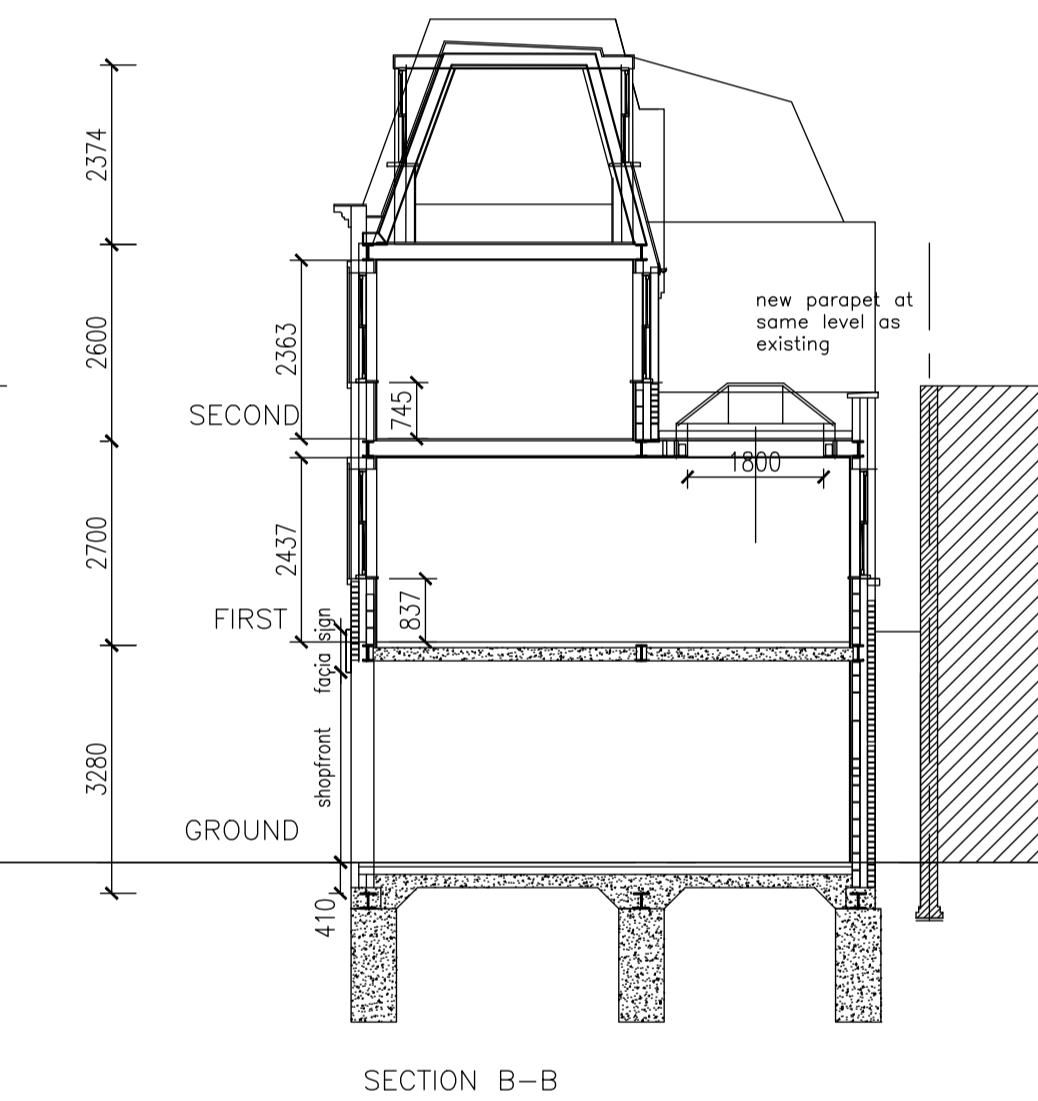
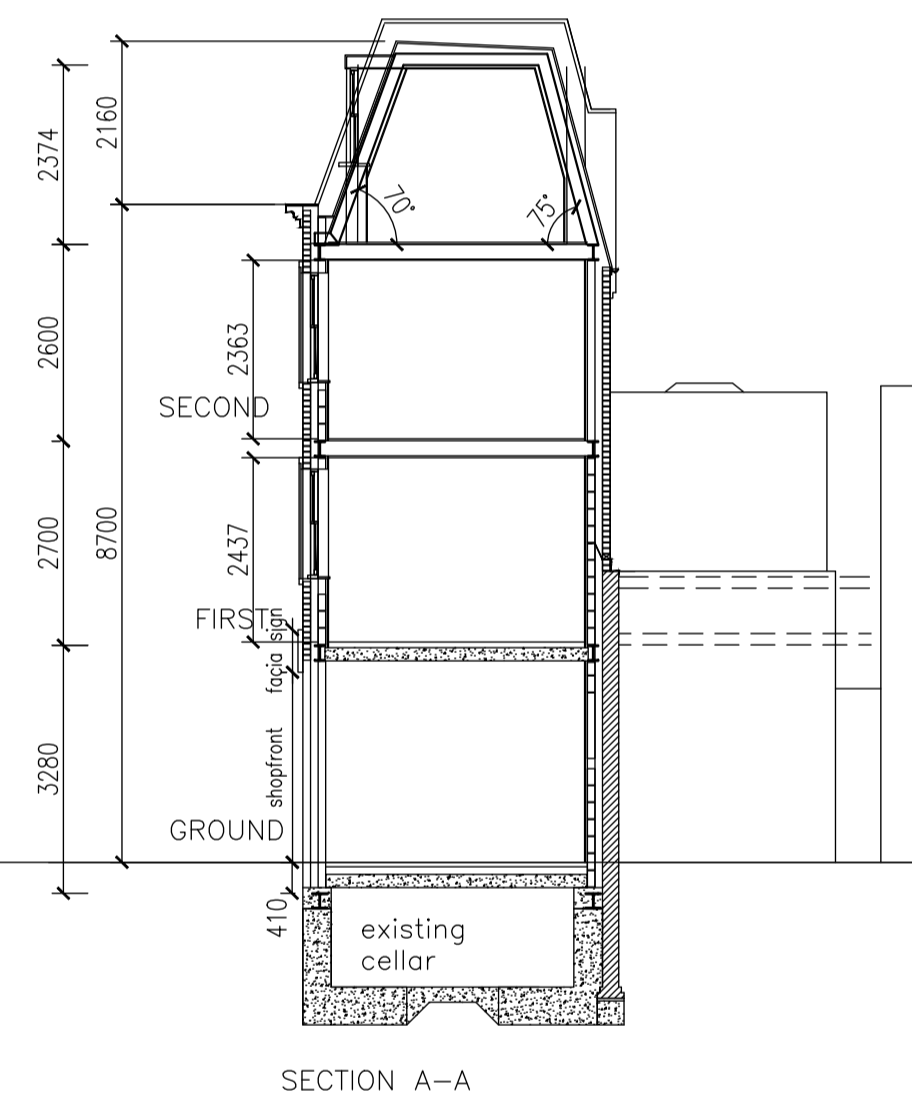


NOTE:
the materials, levels and the dimensions of windows, cornices, dormers and features of the new front elevation of No6 are to match the materials, details, heights and dimensions of the existing elevation features of No8 Highgate Rd.



6 HIGHGATE ROAD . KENTISH TOWN . LONDON NW5 1NR
 PROPOSED NEW BUILDING
 PLANS AND GENERAL ARRANGEMENT
 minor material amendments plan
 scale 1:100@A1 date 15.11.16 dwg HRKT.ga01 rev C
 PAUL EVANS DESIGN ASSOCIATES . ARCHITECTS
 9 DALMENY ROAD . LONDON N7 0HG

tel : 020 7607 8002 info@paulevansdesign.co.uk

Rev B: PLANNING SUBMISSION dormers redesigned 24.01.17
 Rev C: rear elev of No8 shown 21.02.17

