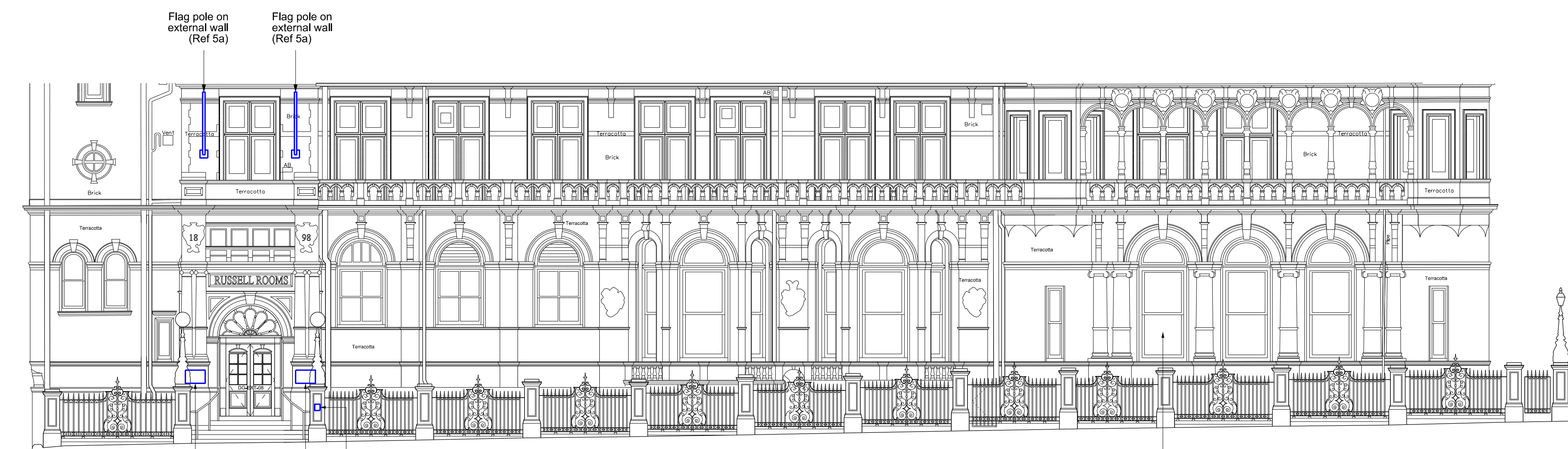




HERBRAND STREET

Fire Exit Keep Clear signage to doors (Ref. 6)

External grade printed clear vinyl on external wall (ref. 15)

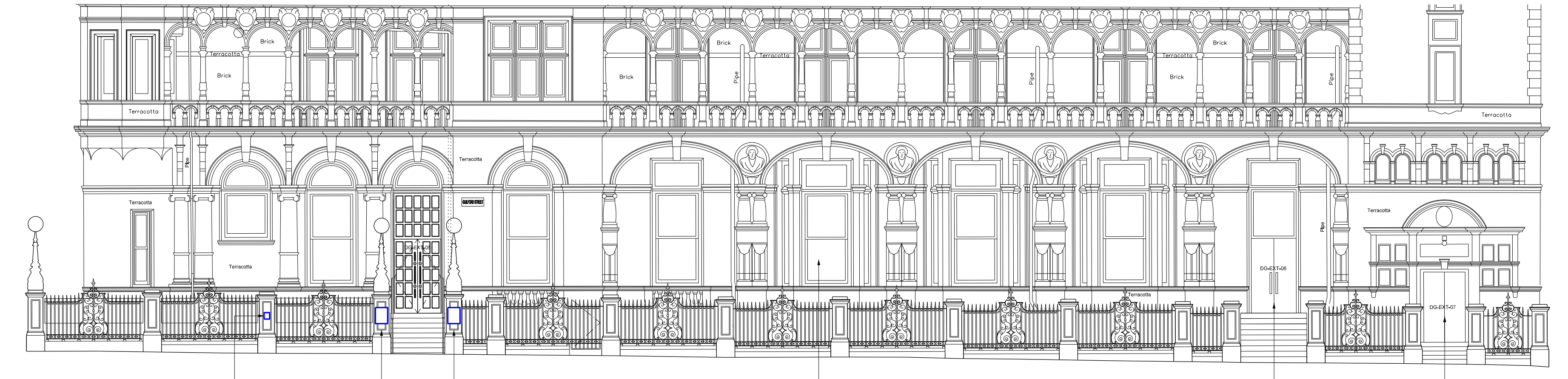


BERNARD STREET

LED illuminated stainless steel sign on external wall (Ref. 2)
LED illuminated stainless steel sign on external wall (Ref. 1c)

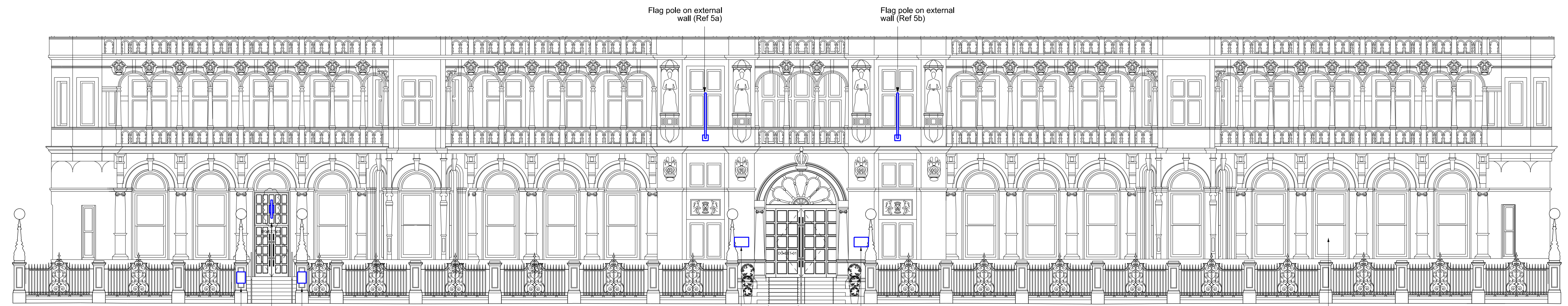
Wheelchair Access Directional Sign (Ref. 20 - as Ref. 19 mirrored)

Vinyls to Windows (Ref. 4) See plan for locations



GUILFORD STREET

Wheelchair Access Directional Sign (Ref. 19)
Menu board sign on pedestal (Ref. 9)
Menu board sign on pedestal (Ref. 13)
Vinyls to Windows (Ref. 4) See plan for locations
Fire Exit Keep Clear signage to doors (Ref. 6)
Fire Exit Keep Clear signage to doors (Ref. 6)



RUSSELL SQUARE

Menu board sign on pedestal (Ref. 11)
Menu board sign on pedestal (Ref. 11)

Projecting Sign fixed to door overpanel (Ref. 17). Central panels on door over panel adapted to allow for fitting plate.

Flag pole on external wall (Ref 5a)
Flag pole on external wall (Ref 5b)

LED illuminated stainless steel sign on external wall (Ref. 1a)
LED illuminated stainless steel sign on external wall (Ref. 1b)

Vinyls to Windows (Ref. 4) See plan for locations

PROPOSED ELEVATIONS

Keyplan

North

Notes:
1. Do not scale
2. Contractor to Check all dimensions and report omissions and errors to the Architect

03 Sign Ref 17 revised	20.01.17 MG
02 Issued for Planning	19.12.16 MG
01 Issued for Comment	09.12.16 MG
No Revision	Date Initial Chkd

To be read in conjunction with Rivermeade External Signage drawings:
RSL-EXT 031216 - Russell Hotel
SCH 13337 RUSSEL EXTERNAL 081216

EPR architects
30 Millbank
London SW1P 4DU
+44 (0) 20 7932 7600
www.epr.co.uk

Russell Hotel
Camden

PROPOSED SIGNAGE
STREET ELEVATIONS

PLANNING 1:100 @ A0 07.12.16

Project No	Type	Bldg	Number	Zone/Lvl	Rev
10089 - T - 01 - 9020 - ZXX					03