



Figure 17 PROPOSED MMA PLAN  
Proposed MMA plan zoomed in from Drawing: 552-19413-CPA PL3 (Not to Scale)

3.0 3D VIEWS

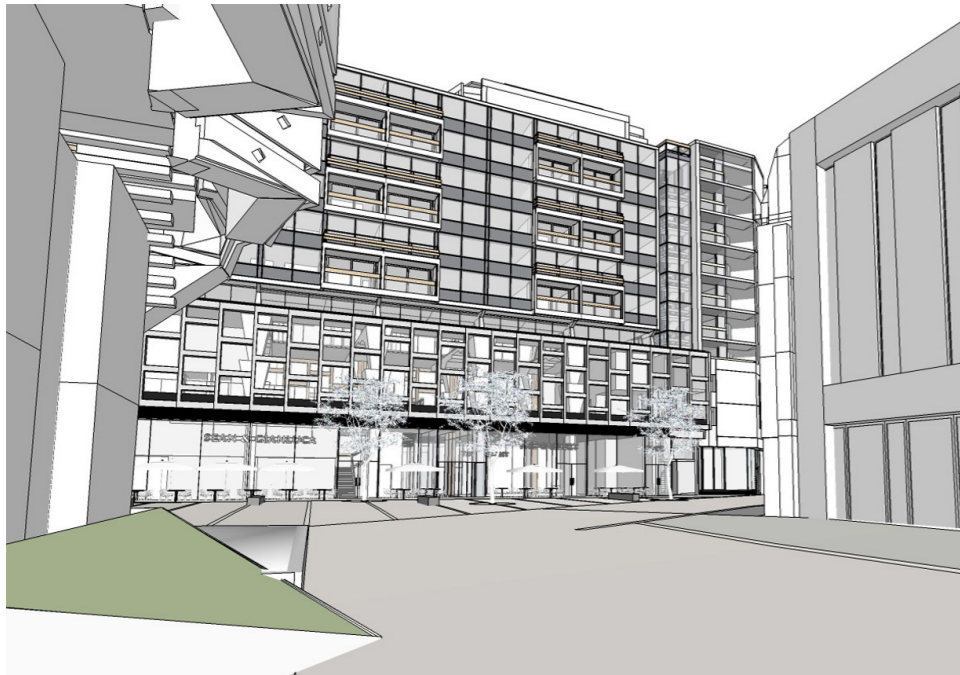
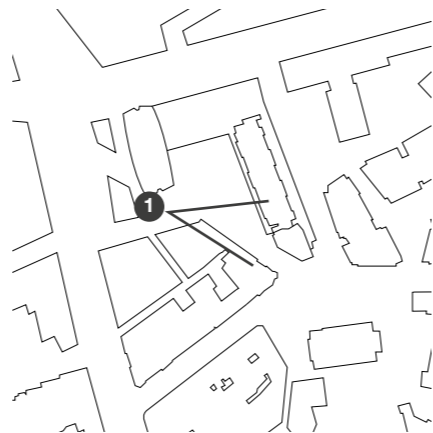


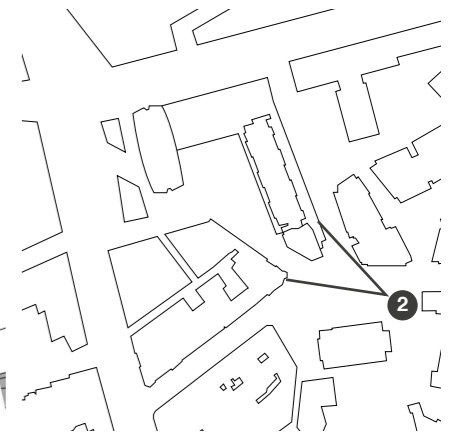
Figure 19 3D View  
Approved scheme



1. VIEW FROM SQUARE / CROSSRAIL



Figure 21 3D View  
Approved scheme



2. EAST VIEW FROM ST. GILES HIGH ST.

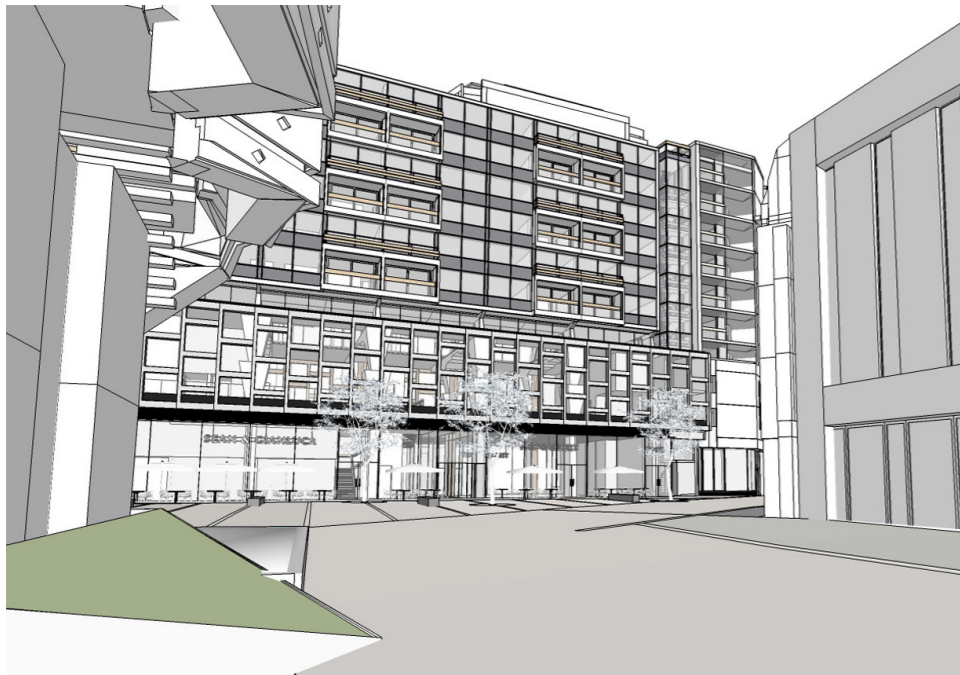


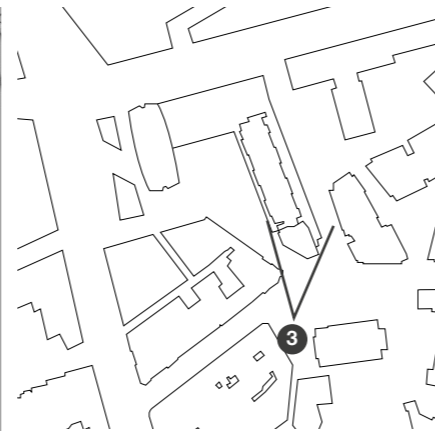
Figure 20 3D View  
Proposed MMA Scheme



Figure 22 3D View  
Approved scheme

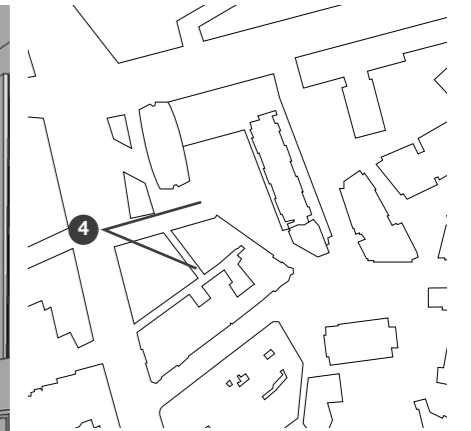
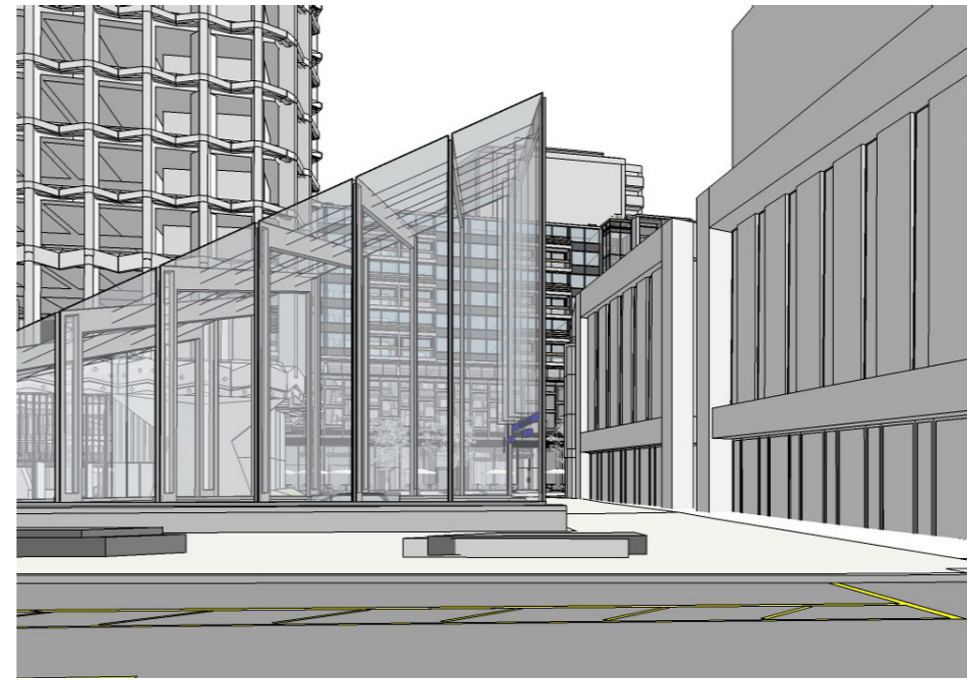


4.0 3D VIEWS



3. WEST VIEW FROM ST. GILES HIGH ST.

Figure 23 3D View  
Approved scheme



4. VIEW FROM CHARING CROSS RD.

Figure 25 3D View  
Approved scheme



Figure 24 3D View  
Approved scheme

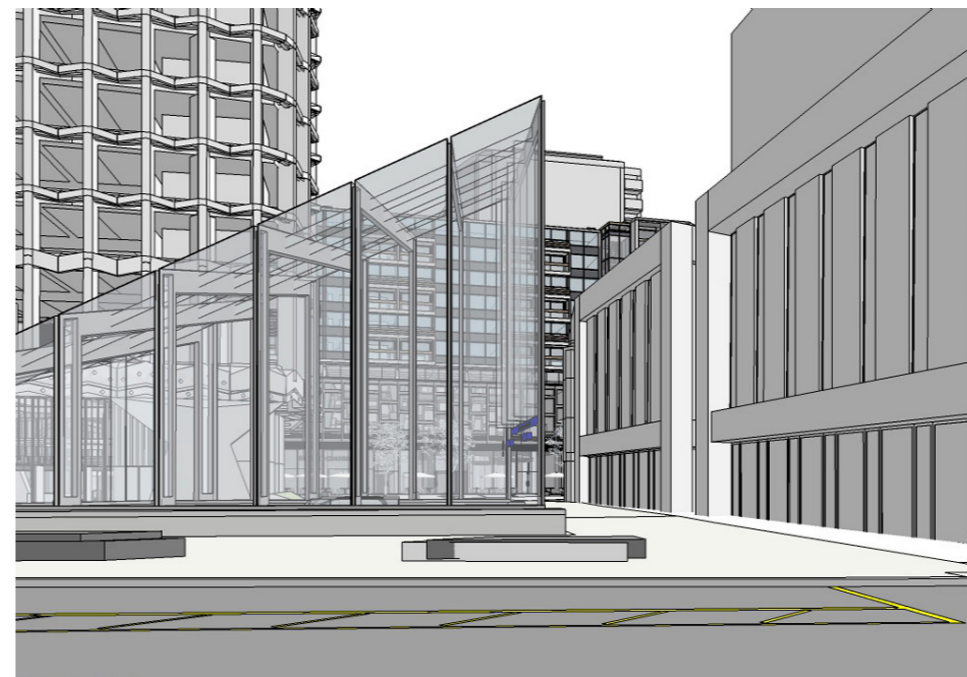
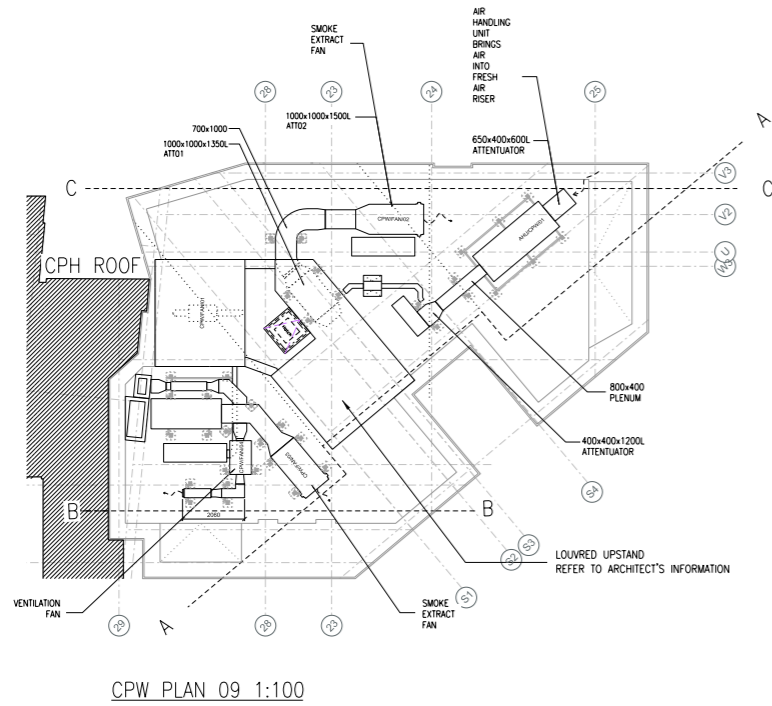
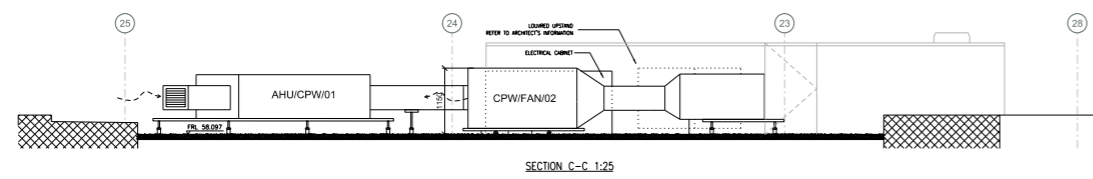
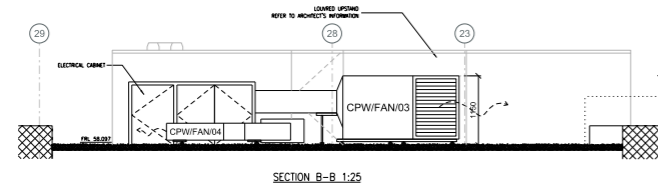
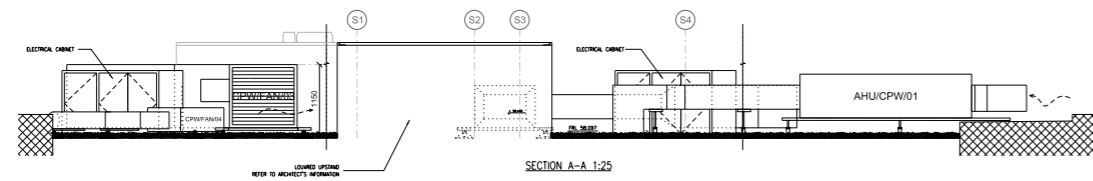


Figure 26 3D View  
Approved scheme

## 4.0 SUB CONTRACTOR DRAWING

Drawing Number: F301-50-CPW-R-108



- NOTES
1. DO NOT SCALE.
  2. THIS DRAWING TO BE READ IN CONJUNCTION WITH LATEST ARCHITECTURAL AND STRUCTURAL DRAWINGS.
  3. FOR EQUIPMENT DETAILS REFER TO TECHNICAL SCHEDULES.
  4. THIS DRAWING TO BE READ IN CONJUNCTION WITH RELEVANT DRAWINGS AND TECHNICAL SPECIFICATIONS.
  5. ALL DIMENSIONS IN MILLIMETRES UNLESS STATED OTHERWISE.

This Drawing Is Based Upon The Following Information:

Rev	Description	Drawn	Checked	Date
0	ISSUED FOR INFORMATION	-	-	18/01/17

**Lorne Stewart**  
 Stewart Stewart  
 Kenton Road, Harrow,  
 Middlesex, HA3 8TU,  
 Telephone: 02047 752 2000  
 Facsimile: 0204204 0483  
 www.lornestewart.co.uk

**IBSECAD**  
 14 Humber Lane, London, E12 6JG Telephone: +44 (0) 20 7618 1100  
 Email: ibsecad@lornestewart.co.uk

PROJECT:  
**CENTRE POINT**

DATE: 09/10/16

APPROVAL

Drawn By	Checked By	Date
DE	OS	09/10/16

SECTION: CPW AFFORDABLE HOUSING  
 ROOF LEVEL  
 COORDINATED SERVICES SECTIONS

F301 50 CPW R 108 0

Figure 18 Sub Contractor Drawing  
 Proposed plan and elevations by Lorne Stewart F301-50-CPW-R-108