

2.0 DESCRIPTION



Figure 10 APPROVED
Approved South elevation zoomed in from Drawing: 552-19504-CPA PL2 South Elevation (Not to Scale)



Figure 11 PROPOSED MMA
Proposed MMA South elevation zoomed in from Drawing: 552-19504-CPA PL3 South Elevation (Not to Scale)



Figure 12 APPROVED
Approved West elevation zoomed in from Drawing: 552-19505-CPA PL3 West Elevation (Not to Scale)

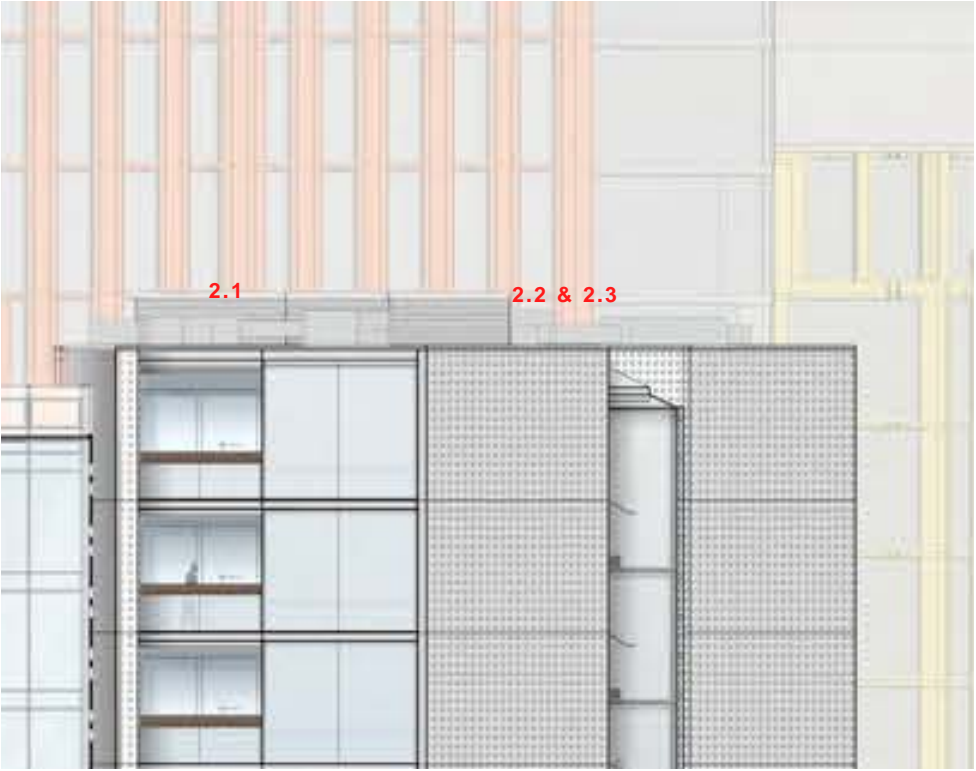


Figure 13 PROPOSED MMA
Proposed MMA West elevation zoomed in from Drawing: 552-19505-CPA PL4 West Elevation (Not to Scale)

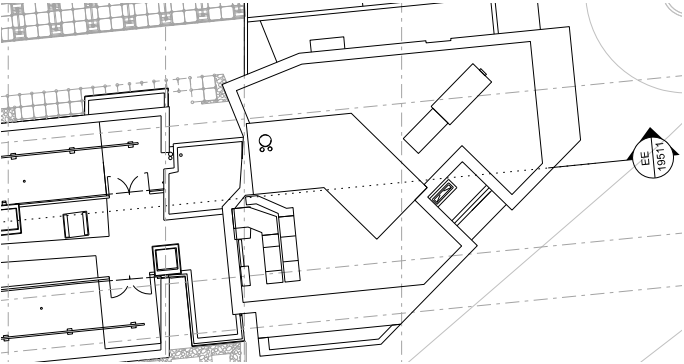


Figure 14 APPROVED PLAN
Approved plan zoomed in from Drawing: 552-19413-CPA PL2 (Not to Scale)

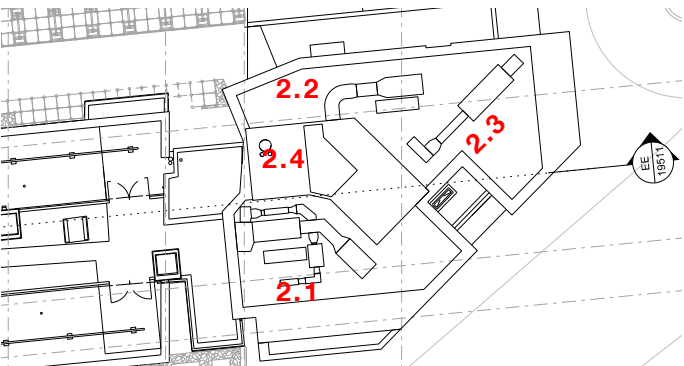


Figure 15 PROPOSED MMA PLAN
Proposed MMA plan zoomed in from Drawing: 552-19413-CPA PL3 (Not to Scale)

2.0 DESCRIPTION

2.4 CPW Roof Top Enclosure

A small portion of the rooftop enclosure roof is proposed to be omitted to facilitate access beneath to what is otherwise a 1.4m high enclosure. This void space avoids safe access from beneath through a hatch but also safe access across east-west through flush louvre doors. The rooftop enclosure is not proposed to be extended or altered in any other way.

Acoustic Note

The new plant has no adverse acoustic impact with regards to the limits set by the Planning Authority. See Sandy Brown Acousticians supporting memo M038-C.

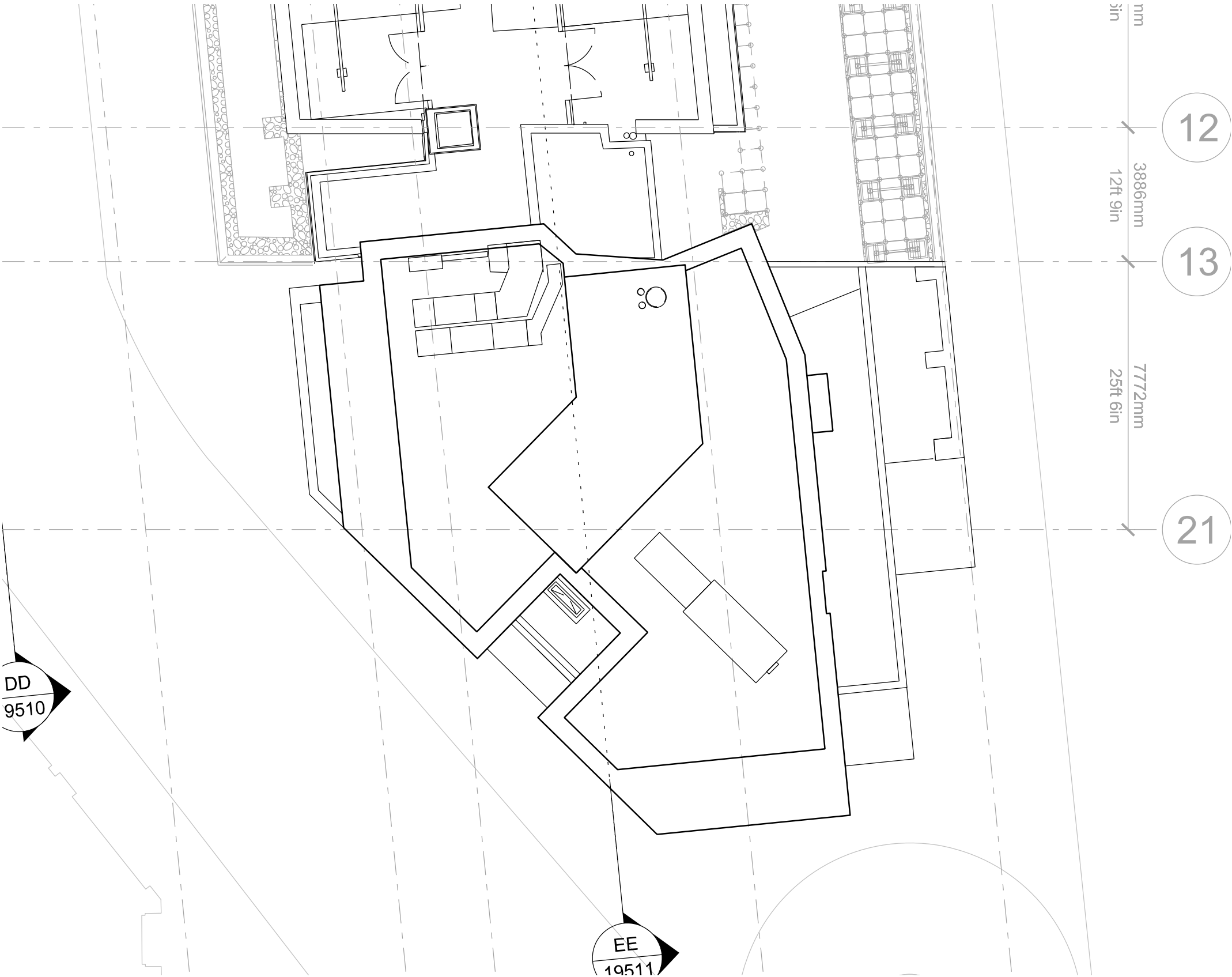


Figure 16 APPROVED PLAN
Approved plan zoomed in from Drawing: 552-19413-CPA PL2 (Not to Scale)