

Figure 2
Proposed MMA North elevation in context zoomed in from Drawing: 552-19502-CPA PL3 (Not to Scale)



Figure 3
Proposed MMA South elevation in context zoomed in from Drawing: 552-19504-CPA PL3 (Not to Scale)



Figure 4
Proposed MMA East elevation in context zoomed in from Drawing: 552-19503-CPA PL4 (Not to Scale)



Figure 5
Proposed MMA West elevation in context zoomed in from Drawing: 552-19505-CPA PL4 (Not to Scale)

2.0 DESCRIPTION

2.1 CPH Plant on CPW Roof

Where the new CPW building joins the existing CPH block an internal smoke extract ventilation shaft is created to serve CPH lift lobbies, launderettes and the lift plant room. This formed part of the original and consented design. Further detailed calculation with the specialist sub-contractors determined the need for additional, attenuated smoke extract. Note that the smoke extract is for emergency use only.

The launderette extract system was redesigned in order to minimize it's size.

Consideration was also given to locating the plant on the south end of CPH existing mid-level roof but the area available is too small when safe access is considered. An installation in this location would also be visible from below. It is therefore proposed to locate the units on top of CPW level 09 roof. This keeps duct routes to a minimum and ensures the units are concealed from views at street level as they are set back behind the adjacent roof parapets.

2.2 CPW Smoke Extract

Further detailed calculation determined the requirement for more attenuation i.e. larger plant. The plant is to align with the geometry of the building and is proposed to be set behind the parapet as far as possible to minimize sight line angles. The smoke extract is operated in emergency circumstances.

2.3 CPW Air-handling Unit

Further detailed calculation determined the requirement for re-sizing to include more attenuation. The plant is to align with the geometry of the building and is proposed to be set behind the parapet as far as possible to minimize sight line angles.

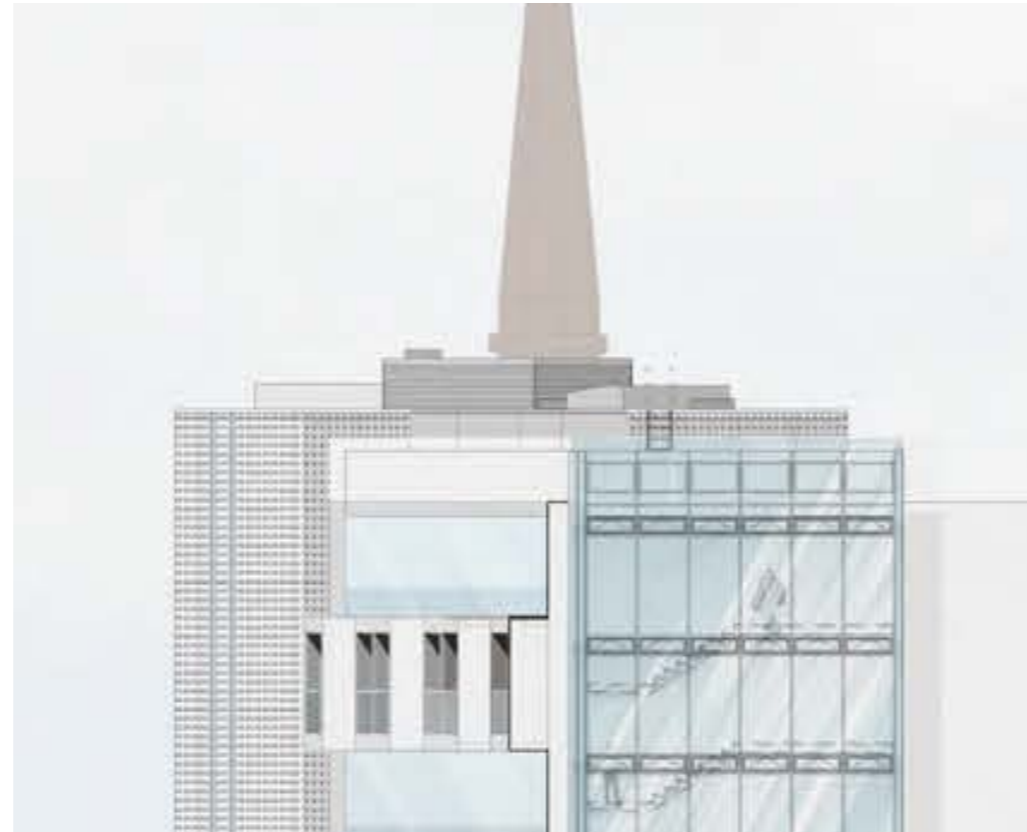


Figure 6 APPROVED
Approved North Elevation zoomed in from Drawing: 552-19502-CPA PL2 North Elevation (Not to Scale)

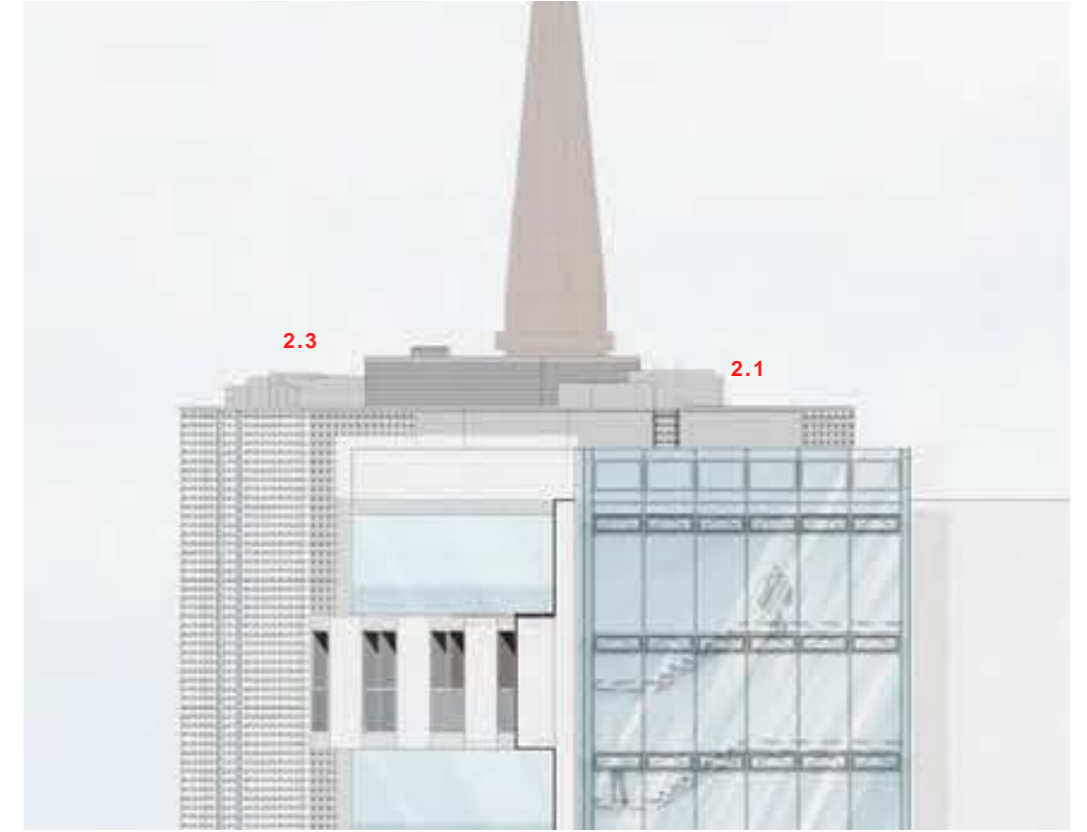


Figure 7 PROPOSED MMA
Proposed MMA North elevation zoomed in from Drawing: 552-19502-CPA PL3 North Elevation (Not to Scale)

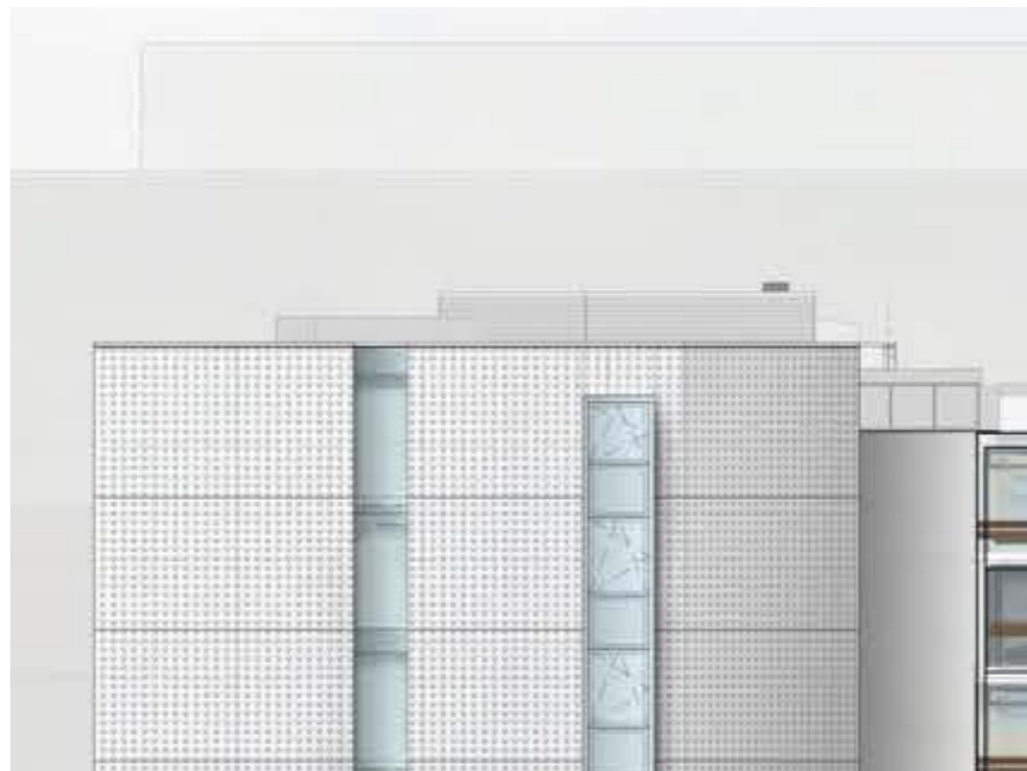


Figure 8 APPROVED
Approved East elevation zoomed in from Drawing: 552-19503-CPA PL3 East Elevation (Not to Scale)

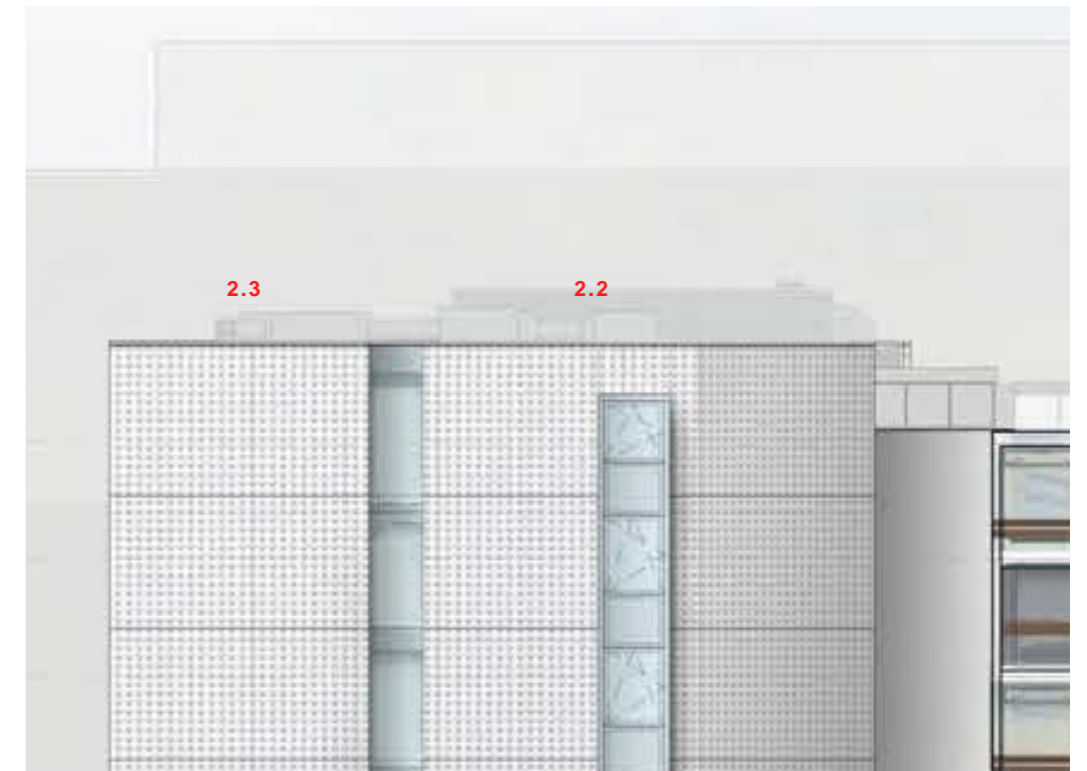


Figure 9 PROPOSED MMA
Proposed MMA East elevation zoomed in from Drawing: 552-19503-CPA PL4 East Elevation (Not to Scale)