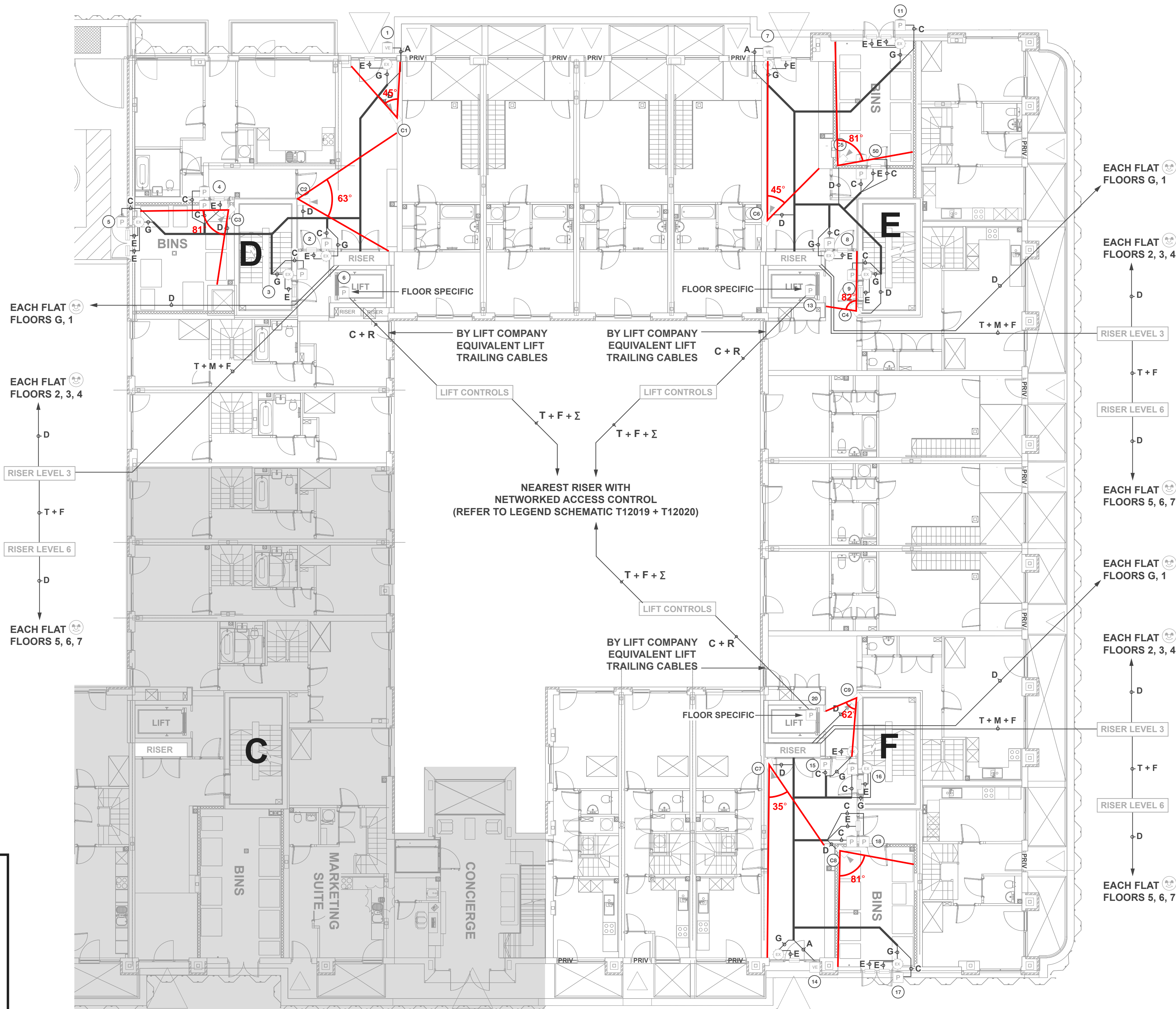


BLOCKS D, E & F, GROUND FLOOR, PRIVATE

Blocks D, E & F = 85no plots  
Block D = 24no flats on 7no levels (G-6) including 4no ground maisonettes with own entrances = Private  
Block E = 30no flats on 7no levels (G-6) including 4no ground maisonettes with own entrances = Private  
Block F = 31no flats on 7no levels (G-6) including 4no ground maisonettes with own entrances = Private



Drawings based on below  
Whitecode originals:

9871-E-2-0099(2) REV T4  
9871-E-2-0100(2) REV T4  
9871-E-2-0101(2) REV T3  
9871-E-2-0102(2) REV T3  
9871-E-2-0103(2) REV T3  
9871-E-2-0104(2) REV T3  
9871-E-2-0105(2) REV T3  
9871-E-2-0106(2) REV T3

Fire escape strategy needs to be confirmed and signed off.  
AOV / Fire relay is part of AOV / Fire system and must always be supplied and programmed by AOV / Fire company.

**Drawings MUST always be read in conjunction with the latest NACD Legend PDF**

**CABLING CODES**

A CAT5E x 5no + EARTH 1.5mm² (6491X)	N CAT5E x 10no
B 3-core 1.5mm² flex cable (3183Y)	Q CAT5E UTP 25 PAIR
C CAT5E + EARTH 1.5mm² (6491X)	R CAT5E shielded x 1no
D CAT5E	S CAT5E shielded x 2no
E Power cable ref. 4 x 1 YY CC per lock (4-core, 1mm²/core)	T LSZH 400IP1644-08 x 1no
F CAT5E x 2no	W Power cable (2-core, 0.75mm²/core)
G Power cable ref. 4 x 1 YY CC per lock (4-core, 1mm²/core) + CAT5E	Y CT100
K CAT5E + Power cable (2-core, 0.75mm²/core)	Z CT125
M CAT5E x 5no	

Cable runs shown are for drawing clarity only, actual physical routes to be determined by site.  
Also refer to Full Cabling on Legend sheet.

**IMPORTANT**

For further information on the following, please refer to the NACD Legend PDF:

- COMMUNICATIONS
- PROGRAMMING
- FIXING HEIGHTS
- SPACE / POWER

**LOCKING**

Locking shown for cabling information only and NOT included in quotations unless expressly stated otherwise.

All locking to be 12VDC Fail Safe. All doors must have either a mechanical means of exit or a green emergency breakglass exit device on the secure side to guarantee safe exit in emergencies.

Refer to the NACD Legend PDF.

**NOTES**

DEPS: 10, 12, 20 = N/A

**CCTV Notes**

36no CCTV cameras on Blocks D, E & F

**AMENDMENTS**

REV.	DATE	DEP	DETAIL OF AMENDMENT	REF.
E	05/11/2016	-	1st fix added.	RAC

**POST TENDER VERSION 2**

SCALE	DESIGNED BY	PROJECT REF.	CLIENT
NTS	AJF	Q2944	BARRATT LONDON \ WILTON

INSTALL END	PROJECT MGR	DATE	PROJECT
		07/11/16	79 CAMDEN ROAD, NW1 9EU

PAGE	DRAWING REF.	REVISION	TITLE
3	BL/W/79CR/DEF/1003	E	BLOCKS D, E & F, GROUND FLOOR, DOOR ENTRY, ACCESS CONTROL & CCTV

**NACD**  
ACCESS • COMMUNICATIONS • CCTV

N.A.C.D. Limited,  
Unit 8, Heron Business Park,  
Eastman Way,  
Hemel Hempstead,  
Hertfordshire HP2 7FW

TEL: 01442 211848  
FAX: 01442 212776  
EMAIL: sales@nacd.co.uk  
WEB: www.telephoneentry.co.uk



BLOCKS D, E & F, LOWER GROUND FLOOR, PRIVATE



Drawings MUST always be read in conjunction with the latest NACD Legend PDF

CABLING CODES

A CAT5E x 5no  
+ EARTH 1.5mm² (6491X)  
B 3-core 1.5mm² flex cable (3183Y)  
C CAT5E  
+ EARTH 1.5mm² (6491X)  
D CAT5E  
E Power cable ref. 4 x 1 YY CC per lock  
(4-core, 1mm²/core)  
F CAT5E x 2no  
G Power cable ref. 4 x 1 YY CC per lock  
(4-core, 1mm²/core)  
+ CAT5E  
K CAT5E + Power cable  
(2-core, 0.75mm²/core)  
M CAT5E x 5no

N CAT5E x 10no  
Q CAT5E UTP 25 PAIR  
R CAT5E shielded x 1no  
S CAT5E shielded x 2no  
T LSZH 4001P1644-08 x 1no  
W Power cable (2-core, 0.75mm²/core)  
Y CT100  
Z CT125

Cable runs shown are for drawing clarity only, actual physical routes to be determined by site.  
Also refer to Full Cabling on Legend sheet.

IMPORTANT

For further information on the following, please refer to the NACD Legend PDF:

- COMMUNICATIONS
- PROGRAMMING
- FIXING HEIGHTS
- SPACE / POWER

LOCKING

Locking shown for cabling information only and NOT included in quotations unless expressly stated otherwise.  
All locking to be 12VDC Fail Safe. All doors must have either a mechanical means of exit or a green emergency breakglass exit device on the secure side to guarantee safe exit in emergencies.  
Refer to the NACD Legend PDF.

NOTES

DEPS:  
10, 12, 20 = N/A

CCTV Notes

36no CCTV cameras on Blocks D, E & F

AMENDMENTS

REV.	DATE	DEP	DETAIL OF AMENDMENT	REF.
E	05/11/2016	-	1st fix added.	RAC

POST TENDER VERSION 2

SCALE	DESIGNED BY	PROJECT REF.	CLIENT
NTS	AJF	Q2944	BARRATT LONDON \ WILTON
INSTALL END	PROJECT MGR	DATE	PROJECT
		07/11/16	79 CAMDEN ROAD, NW1 9EU
PAGE	DRAWING REF.	REVISION	TITLE
4	BL/W/79CR/DEF/1004	E	BLOCKS D, E & F, LOWER GROUND, DOOR ENTRY, ACCESS CONTROL & CCTV



N.A.C.D. Limited,  
Unit 8, Heron Business Park,  
Eastman Way,  
Hemel Hempstead,  
Hertfordshire HP2 7FW

TEL: 01442 211848  
FAX: 01442 212776  
EMAIL: sales@nacd.co.uk  
WEB: www.telephoneentry.co.uk



Fire escape strategy needs to be confirmed and signed off.

AOV / Fire relay is part of AOV / Fire system and must always be supplied and programmed by AOV / Fire company.

BLOCKS D, E & F, FIRST FLOOR, PRIVATE



Drawings MUST always be read in conjunction with the latest NACD Legend PDF

CABLING CODES

A CAT5E x 5no  
+ EARTH 1.5mm<sup>2</sup> (6491X)  
B 3-core 1.5mm<sup>2</sup> flex cable (3183Y)  
C CAT5E  
+ EARTH 1.5mm<sup>2</sup> (6491X)  
D CAT5E  
E Power cable ref. 4 x 1 YY CC per lock  
(4-core, 1mm<sup>2</sup>/core)  
F CAT5E x 2no  
G Power cable ref. 4 x 1 YY CC per lock  
(4-core, 1mm<sup>2</sup>/core)  
+ CAT5E  
K CAT5E + Power cable  
(2-core, 0.75mm<sup>2</sup>/core)  
M CAT5E x 5no

N CAT5E x 10no  
Q CAT5E UTP 25 PAIR  
R CAT5E shielded x 1no  
S CAT5E shielded x 2no  
T LSZH 4001P1644-08 x 1no  
W Power cable (2-core, 0.75mm<sup>2</sup>/core)  
Y CT100  
Z CT125

Cable runs shown are for drawing clarity only, actual physical routes to be determined by site.  
Also refer to Full Cabling on Legend sheet.

IMPORTANT

For further information on the following, please refer to the NACD Legend PDF:

- COMMUNICATIONS
- PROGRAMMING
- FIXING HEIGHTS
- SPACE / POWER

LOCKING

Locking shown for cabling information only and NOT included in quotations unless expressly stated otherwise.  
All locking to be 12VDC Fail Safe. All doors must have either a mechanical means of exit or a green emergency breakglass exit device on the secure side to guarantee safe exit in emergencies.  
Refer to the NACD Legend PDF.

NOTES

DEPS:  
10, 12, 20 = N/A

CCTV Notes

36no CCTV cameras on Blocks D, E & F

AMENDMENTS

REV.	DATE	DEP	DETAIL OF AMENDMENT	REF.
E	05/11/2016	-	1st fix added.	RAC

POST TENDER VERSION 2

SCALE	DESIGNED BY	PROJECT REF.	CLIENT
NTS	AJF	Q2944	BARRATT LONDON \ WILTON
INSTALL. END	PROJECT MGR	DATE	PROJECT
		07/11/16	79 CAMDEN ROAD, NW1 9EU
PAGE	DRAWING REF.	REVISION	TITLE
5	BL/W/79CR/DEF/1005	E	BLOCKS D, E & F, FIRST FLOOR, DOOR ENTRY, ACCESS CONTROL & CCTV



N.A.C.D. Limited,  
Unit 8, Heron Business Park,  
Eastman Way,  
Hemel Hempstead,  
Hertfordshire HP2 7FW

TEL: 01442 211848  
FAX: 01442 212776  
EMAIL: sales@nacd.co.uk  
WEB: www.telephoneentry.co.uk

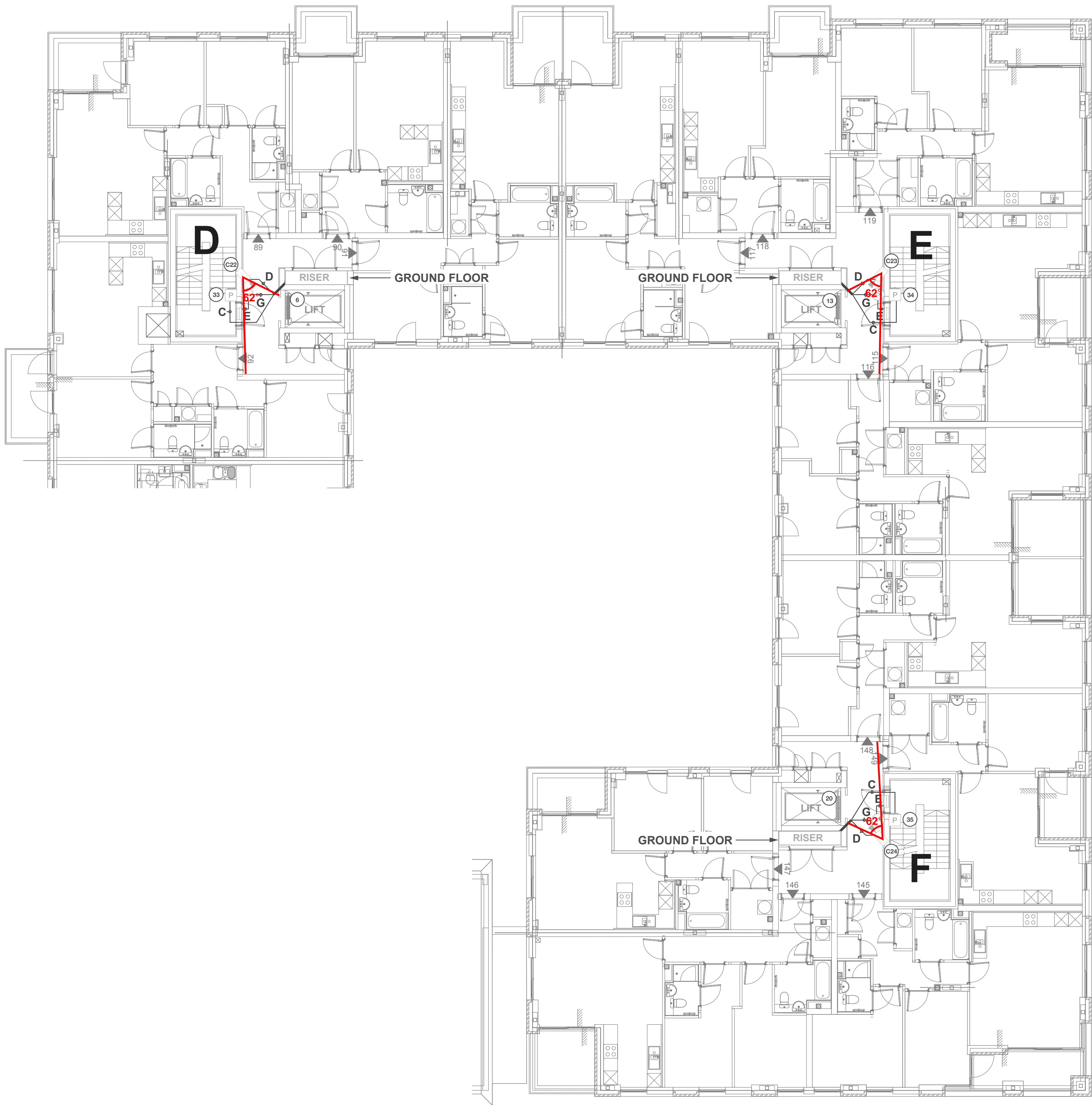


Fire escape strategy needs to be confirmed and signed off.

AOV / Fire relay is part of AOV / Fire system and must always be supplied and programmed by AOV / Fire company.



BLOCKS D, E & F, SECOND FLOOR, PRIVATE



Drawings MUST always be read in conjunction with the latest NACD Legend PDF

CABLING CODES

A CAT5E x 5no  
+ EARTH 1.5mm<sup>2</sup> (6491X)  
B 3-core 1.5mm<sup>2</sup> flex cable (3183Y)  
C CAT5E  
+ EARTH 1.5mm<sup>2</sup> (6491X)  
D CAT5E  
E Power cable ref. 4 x 1 YY CC per lock  
(4-core, 1mm<sup>2</sup>/core)  
F CAT5E x 2no  
G Power cable ref. 4 x 1 YY CC per lock  
(4-core, 1mm<sup>2</sup>/core)  
+ CAT5E  
K CAT5E + Power cable  
(2-core, 0.75mm<sup>2</sup>/core)  
M CAT5E x 5no

N CAT5E x 10no  
Q CAT5E UTP 25 PAIR  
R CAT5E shielded x 1no  
S CAT5E shielded x 2no  
T LSZH 4001P1644-08 x 1no  
W Power cable (2-core, 0.75mm<sup>2</sup>/core)  
Y CT100  
Z CT125

Cable runs shown are for drawing clarity only, actual physical routes to be determined by site.  
Also refer to Full Cabling on Legend sheet.

IMPORTANT

For further information on the following, please refer to the NACD Legend PDF:

- COMMUNICATIONS
- PROGRAMMING
- FIXING HEIGHTS
- SPACE / POWER

LOCKING

Locking shown for cabling information only and NOT included in quotations unless expressly stated otherwise.  
All locking to be 12VDC Fail Safe. All doors must have either a mechanical means of exit or a green emergency breakglass exit device on the secure side to guarantee safe exit in emergencies.  
Refer to the NACD Legend PDF.

NOTES

DEPS:  
10, 12, 20 = N/A

CCTV Notes

36no CCTV cameras on Blocks D, E & F

AMENDMENTS

REV.	DATE	DEP	DETAIL OF AMENDMENT	REF.
E	05/11/2016	-	1st fix added.	RAC

POST TENDER VERSION 2

SCALE	DESIGNED BY	PROJECT REF.	CLIENT
NTS	AJF	Q2944	BARRATT LONDON \ WILTON
INSTALL END	PROJECT MGR	DATE	PROJECT
		07/11/16	79 CAMDEN ROAD, NW1 9EU
PAGE	DRAWING REF.	REVISION	TITLE
6	BL/W/79CR/DEF/1006	E	BLOCKS D, E & F, SECOND FLOOR, DOOR ENTRY, ACCESS CONTROL & CCTV



N.A.C.D. Limited,  
Unit 8, Heron Business Park,  
Eastman Way,  
Hemel Hempstead,  
Hertfordshire HP2 7FW

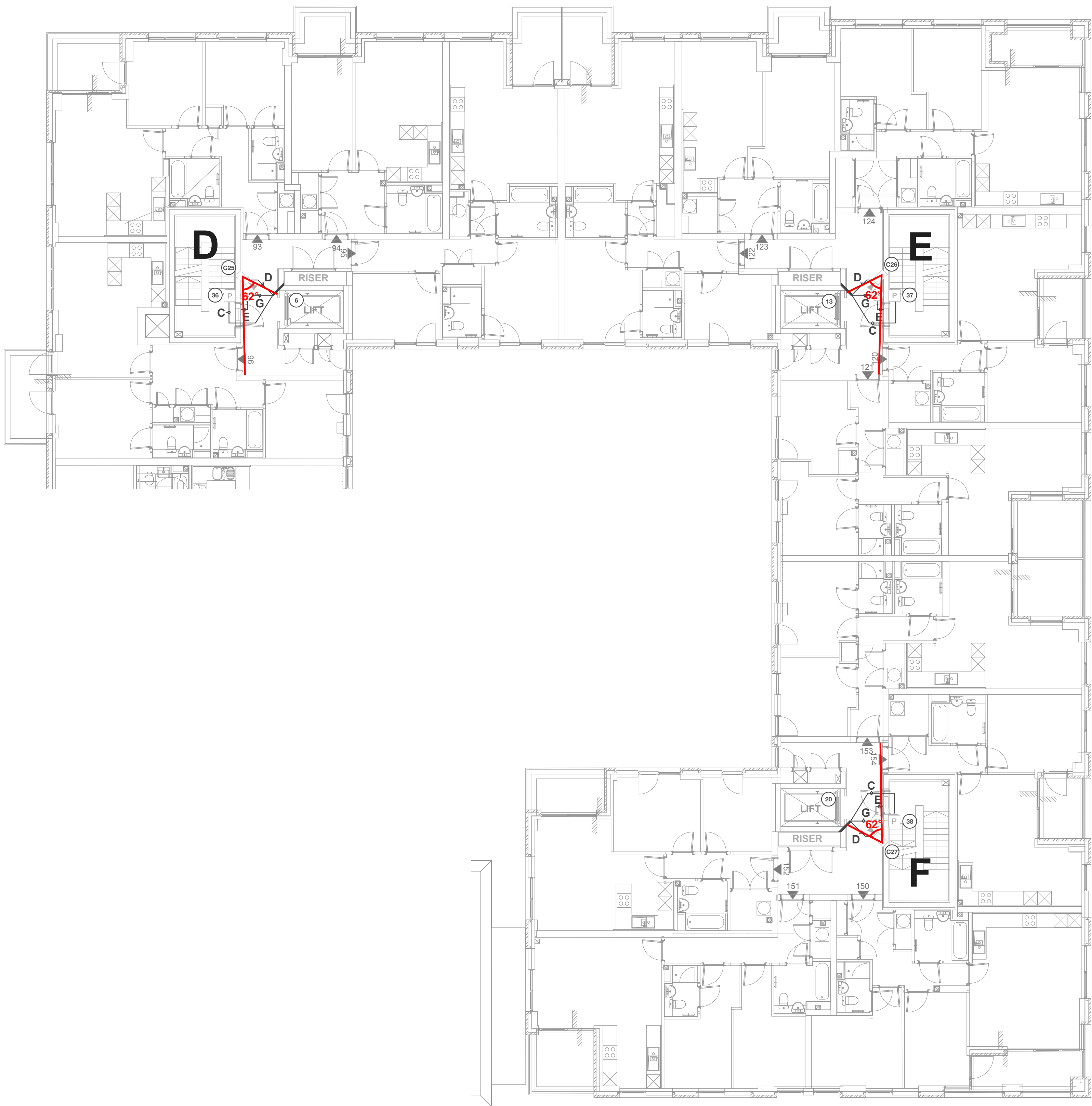
TEL: 01442 211848  
FAX: 01442 212776  
EMAIL: sales@nacd.co.uk  
WEB: www.telephoneentry.co.uk



Fire escape strategy needs to be confirmed and signed off.

AOV / Fire relay is part of AOV / Fire system and must always be supplied and programmed by AOV / Fire company.

BLOCKS D, E & F, THIRD FLOOR, PRIVATE



Drawings MUST always be read in conjunction with the latest NACD Legend PDF

CABLING CODES

A	CAT5E x 5no + EARTH 1.5mm² (6491X)	N	CAT5E x 10no
B	3-core 1.5mm² flex cable (3183Y)	Q	CAT5E UTP 25 PAIR
C	CAT5E + EARTH 1.5mm² (6491X)	R	CAT5E shielded x 1no
D	CAT5E	S	CAT5E shielded x 2no
E	Power cable ref. 4 x 1 YY CC per lock (4-core, 1mm²/core)	T	LSZH 4001P1644-08 x 1no
F	CAT5E x 2no	W	Power cable (2-core, 0.75mm²/core)
G	Power cable ref. 4 x 1 YY CC per lock (4-core, 1mm²/core) + CAT5E	Y	CT100
K	CAT5E + Power cable (2-core, 0.75mm²/core)	Z	CT125
M	CAT5E x 5no		

Cable runs shown are for drawing clarity only, actual physical routes to be determined by site.  
Also refer to Full Cabling on Legend sheet.

IMPORTANT

For further information on the following, please refer to the NACD Legend PDF:

- COMMUNICATIONS
- PROGRAMMING
- FIXING HEIGHTS
- SPACE / POWER

LOCKING

Locking shown for cabling information only and NOT included in quotations unless expressly stated otherwise.  
All locking to be 12VDC Fail Safe. All doors must have either a mechanical means of exit or a green emergency breakglass exit device on the secure side to guarantee safe exit in emergencies.  
Refer to the NACD Legend PDF.

NOTES

DEPS:  
10, 12, 20 = N/A

CCTV Notes

36no CCTV cameras on Blocks D, E & F

AMENDMENTS

REV.	DATE	DEP	DETAIL OF AMENDMENT	REF.
E	05/11/2016	-	1st fix added.	RAC

POST TENDER VERSION 2

SCALE	DESIGNED BY	PROJECT REF.	CLIENT
NTS	AJF	Q2944	BARRATT LONDON \ WILTON
INSTALL. ENG.	PROJECT MGR.	DATE	PROJECT
		07/11/16	79 CAMDEN ROAD, NW1 9EU
PAGE	DRAWING REF.	REVISION	TITLE
7	BL/W/79CR/DEF/1007	E	BLOCKS D, E & F, THIRD FLOOR, DOOR ENTRY, ACCESS CONTROL & CCTV



N.A.C.D. Limited,  
Unit 8, Heron Business Park,  
Eastman Way,  
Hemel Hempstead,  
Hertfordshire HP2 7FW

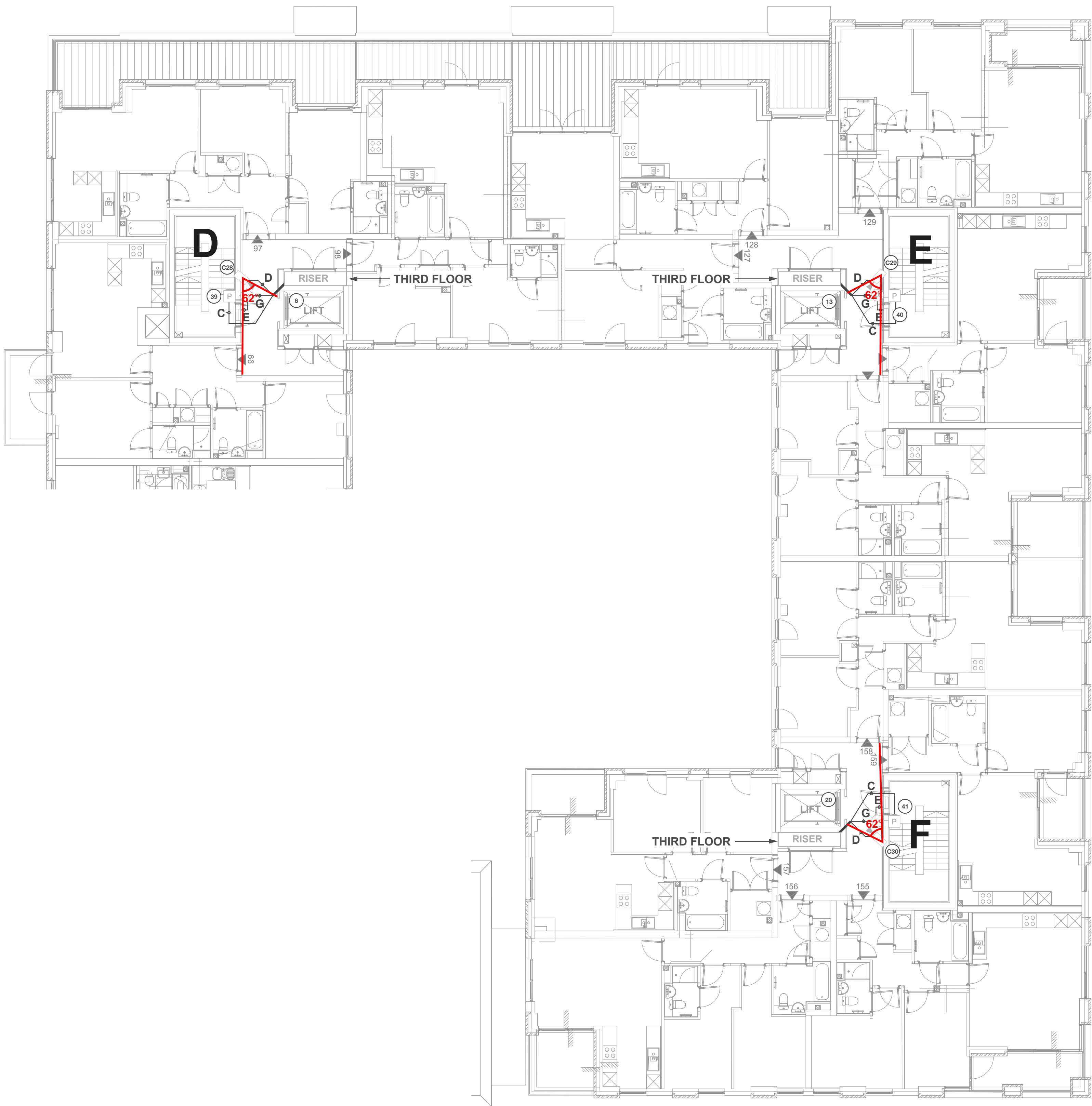
TEL: 01442 211848  
FAX: 01442 212776  
EMAIL: sales@nacd.co.uk  
WEB: www.telephoneentry.co.uk



Fire escape strategy needs to be confirmed and signed off.  
AOV / Fire relay is part of AOV / Fire system and must always be supplied and programmed by AOV / Fire company.



BLOCKS D, E & F, FOURTH FLOOR, PRIVATE



Drawings MUST always be read in conjunction with the latest NACD Legend PDF

CABLING CODES

A CAT5E x 5no  
+ EARTH 1.5mm² (6491X)  
B 3-core 1.5mm² flex cable (3183Y)  
C CAT5E  
+ EARTH 1.5mm² (6491X)  
D CAT5E  
E Power cable ref. 4 x 1 YY CC per lock  
(4-core, 1mm²/core)  
F CAT5E x 2no  
G Power cable ref. 4 x 1 YY CC per lock  
(4-core, 1mm²/core)  
+ CAT5E  
K CAT5E + Power cable  
(2-core, 0.75mm²/core)  
M CAT5E x 5no

N CAT5E x 10no  
Q CAT5E UTP 25 PAIR  
R CAT5E shielded x 1no  
S CAT5E shielded x 2no  
T LSZH 4001P1644-08 x 1no  
W Power cable (2-core, 0.75mm²/core)  
Y CT100  
Z CT125

Cable runs shown are for drawing clarity only, actual physical routes to be determined by site.  
Also refer to Full Cabling on Legend sheet.

IMPORTANT

For further information on the following, please refer to the NACD Legend PDF:

- COMMUNICATIONS
- PROGRAMMING
- FIXING HEIGHTS
- SPACE / POWER

LOCKING

Locking shown for cabling information only and NOT included in quotations unless expressly stated otherwise.  
All locking to be 12VDC Fail Safe. All doors must have either a mechanical means of exit or a green emergency breakglass exit device on the secure side to guarantee safe exit in emergencies.  
Refer to the NACD Legend PDF.

NOTES

DEPS:  
10, 12, 20 = N/A

CCTV Notes

36no CCTV cameras on Blocks D, E & F

AMENDMENTS

REV.	DATE	DEP	DETAIL OF AMENDMENT	REF.
E	05/11/2016	-	1st fix added.	RAC

POST TENDER VERSION 2

SCALE	DESIGNED BY	PROJECT REF.	CLIENT
NTS	AJF	Q2944	BARRATT LONDON \ WILTON
INSTALL ENG	PROJECT MGR	DATE	PROJECT
		07/11/16	79 CAMDEN ROAD, NW1 9EU
PAGE	DRAWING REF.	REVISION	TITLE
8	BL/W/79CR/DEF/1008	E	BLOCKS D, E & F, FOURTH FLOOR, DOOR ENTRY, ACCESS CONTROL & CCTV



N.A.C.D. Limited,  
Unit 8, Heron Business Park,  
Eastman Way,  
Hemel Hempstead,  
Hertfordshire HP2 7FW

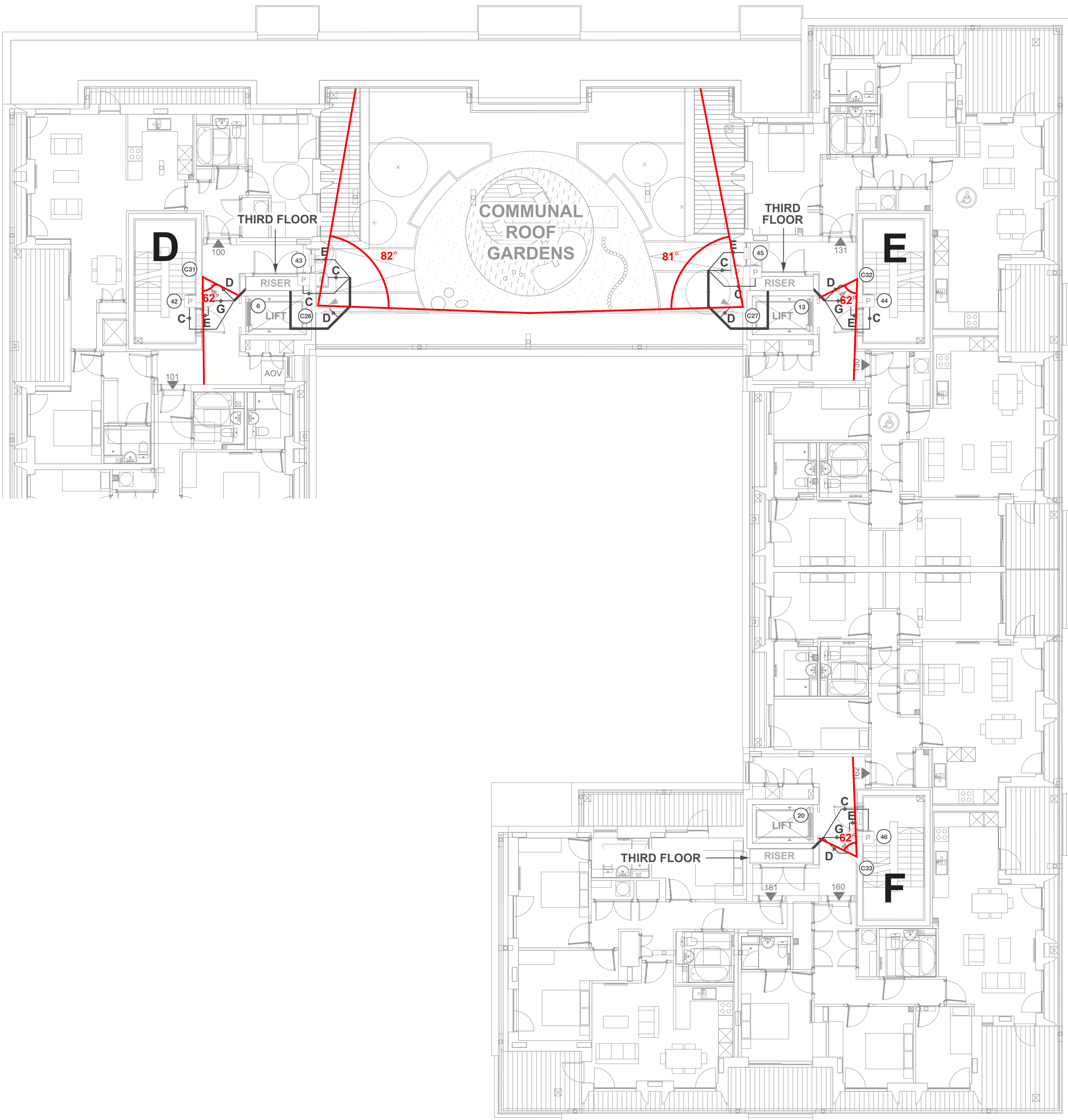
TEL: 01442 211848  
FAX: 01442 212776  
EMAIL: sales@nacd.co.uk  
WEB: www.telephoneentry.co.uk



Fire escape strategy needs to be confirmed and signed off.

AOV / Fire relay is part of AOV / Fire system and must always be supplied and programmed by AOV / Fire company.

BLOCKS D, E & F, FIFTH FLOOR, PRIVATE



Drawings **MUST** always be read in conjunction with the latest **NACD Legend PDF**

CABLING CODES

A	CAT5E x 5no + EARTH 1.5mm² (6491X)	N	CAT5E x 10no
B	3-core 1.5mm² flex cable (3183Y)	Q	CAT5E UTP 25 PAIR
C	CAT5E + EARTH 1.5mm² (6491X)	R	CAT5E shielded x 1no
D	CAT5E	S	CAT5E shielded x 2no
E	Power cable ref. 4 x 1 YY CC per lock (4-core, 1mm²/core)	T	LSZH 4001P1644-08 x 1no
F	CAT5E x 2no	W	Power cable (2-core, 0.75mm²/core)
G	Power cable ref. 4 x 1 YY CC per lock (4-core, 1mm²/core) + CAT5E	Y	CT100
K	CAT5E + Power cable (2-core, 0.75mm²/core)	Z	CT125
M	CAT5E x 5no		

Cable runs shown are for drawing clarity only, actual physical routes to be determined by site.  
Also refer to Full Cabling on Legend sheet.

IMPORTANT

For further information on the following, please refer to the **NACD Legend PDF**:

- COMMUNICATIONS
- PROGRAMMING
- FIXING HEIGHTS
- SPACE / POWER

LOCKING

Locking shown for cabling information only and NOT included in quotations unless expressly stated otherwise.  
  
All locking to be 12VDC Fail Safe. All doors must have either a mechanical means of exit or a green emergency breakglass exit device on the secure side to guarantee safe exit in emergencies.  
Refer to the **NACD Legend PDF**.

NOTES

DEPS:  
10, 12, 20 = N/A

CCTV Notes

36no CCTV cameras on Blocks D, E & F

AMENDMENTS

REV.	DATE	DEP	DETAIL OF AMENDMENT	REF.
E	05/11/2016	-	1st fix added.	RAC

POST TENDER VERSION 2

SCALE	DESIGNED BY	PROJECT REF.	CLIENT
NTS	AJF	Q2944	BARRATT LONDON \ WILTON
INSTALL END	PROJECT MGR	DATE	PROJECT
		07/11/16	79 CAMDEN ROAD, NW1 9EU
PAGE	DRAWING REF.	REVISION	TITLE
9	BL/W/79CR/DEF/1009	E	BLOCKS D, E & F, FIFTH FLOOR, DOOR ENTRY, ACCESS CONTROL & CCTV



N.A.C.D. Limited,  
Unit 8, Heron Business Park,  
Eastman Way,  
Hemel Hempstead,  
Hertfordshire HP2 7FW

TEL: 01442 211848  
FAX: 01442 212776  
EMAIL: sales@nacd.co.uk  
WEB: www.telephoneentry.co.uk

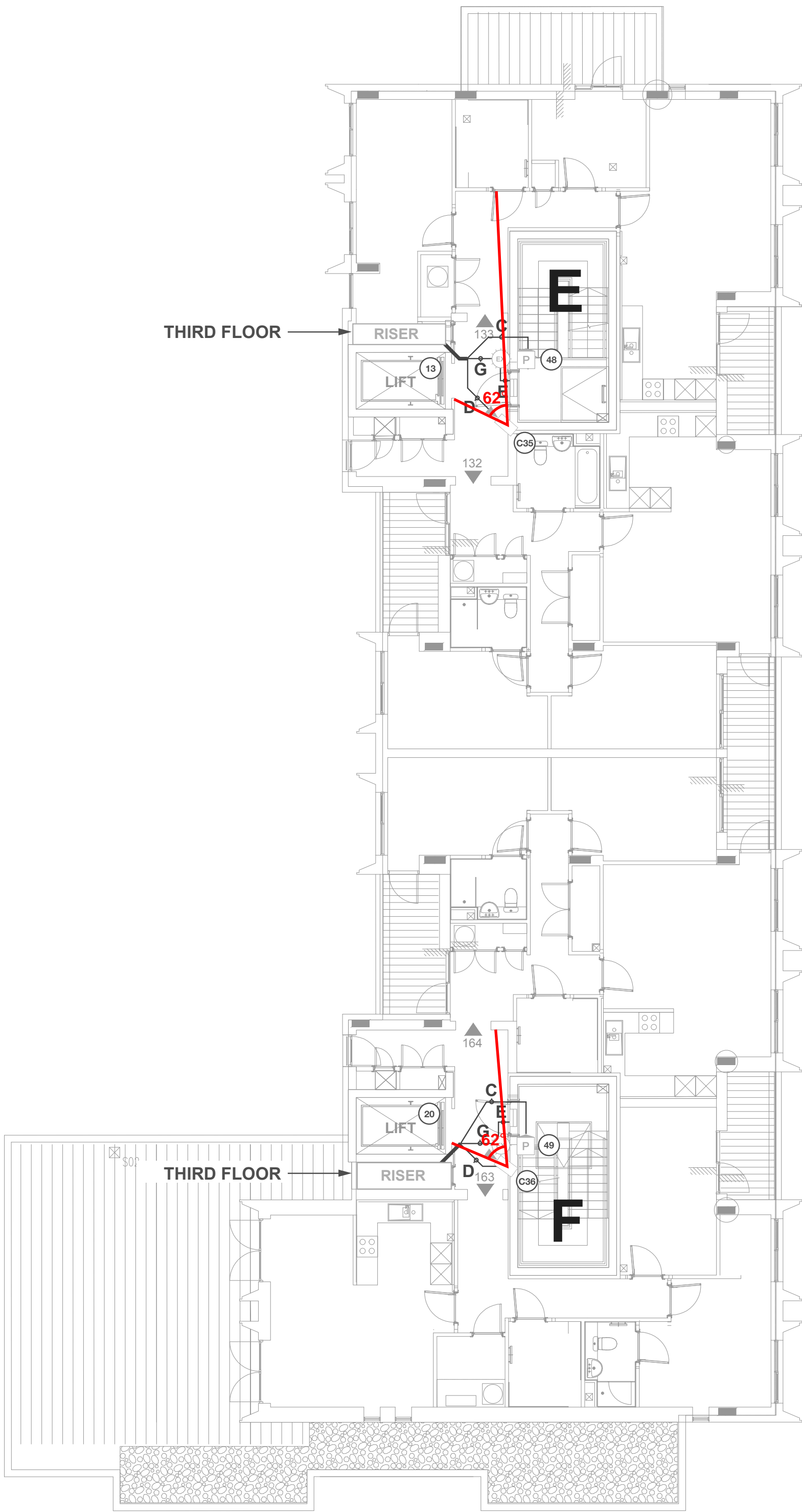
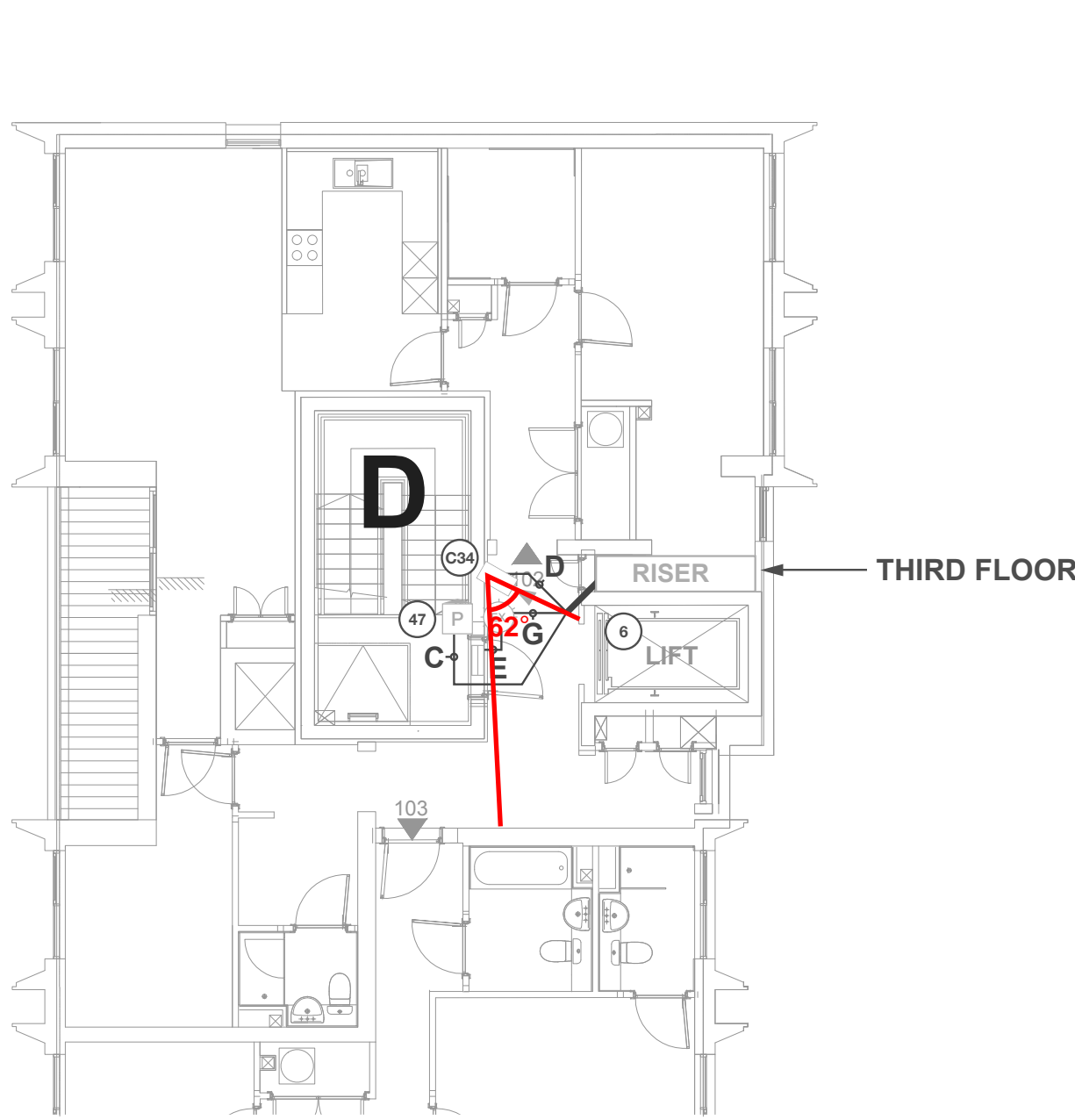


Fire escape strategy needs to be confirmed and signed off.

AOV / Fire relay is part of AOV / Fire system and must always be supplied and programmed by AOV / Fire company.



BLOCKS D, E & F, SIXTH FLOOR, PRIVATE



Drawings MUST always be read in conjunction with the latest NACD Legend PDF

CABLING CODES

A CAT5E x 5no  
+ EARTH 1.5mm² (6491X)  
B 3-core 1.5mm² flex cable (3183Y)  
C CAT5E  
+ EARTH 1.5mm² (6491X)  
D CAT5E  
E Power cable ref. 4 x 1 YY CC per lock  
(4-core, 1mm²/core)  
F CAT5E x 2no  
G Power cable ref. 4 x 1 YY CC per lock  
(4-core, 1mm²/core)  
+ CAT5E  
K CAT5E + Power cable  
(2-core, 0.75mm²/core)  
M CAT5E x 5no

N CAT5E x 10no  
Q CAT5E UTP 25 PAIR  
R CAT5E shielded x 1no  
S CAT5E shielded x 2no  
T LSZH 4001P1644-08 x 1no  
W Power cable (2-core, 0.75mm²/core)  
Y CT100  
Z CT125

Cable runs shown are for drawing clarity only, actual physical routes to be determined by site.  
Also refer to Full Cabling on Legend sheet.

IMPORTANT

For further information on the following, please refer to the NACD Legend PDF:

- COMMUNICATIONS
- PROGRAMMING
- FIXING HEIGHTS
- SPACE / POWER

LOCKING

Locking shown for cabling information only and NOT included in quotations unless expressly stated otherwise.  
All locking to be 12VDC Fail Safe. All doors must have either a mechanical means of exit or a green emergency breakglass exit device on the secure side to guarantee safe exit in emergencies.  
Refer to the NACD Legend PDF.

NOTES

DEPS:  
10, 12, 20 = N/A

CCTV Notes

36no CCTV cameras on Blocks D, E & F

AMENDMENTS

REV.	DATE	DEP	DETAIL OF AMENDMENT	REF.
E	05/11/2016	-	1st fix added.	RAC

POST TENDER VERSION 2

SCALE	DESIGNED BY	PROJECT REF.	CLIENT
NTS	AJF	Q2944	BARRATT LONDON \ WILTON
INSTALL. ENG.	PROJECT MGR.	DATE	PROJECT
		07/11/16	79 CAMDEN ROAD, NW1 9EU
PAGE	DRAWING REF.	REVISION	TITLE
10	BL/W/79CR/DEF/10010	E	BLOCKS D, E & F, SIXTH FLOOR, DOOR ENTRY, ACCESS CONTROL & CCTV



N.A.C.D. Limited,  
Unit 8, Heron Business Park,  
Eastman Way,  
Hemel Hempstead,  
Hertfordshire HP2 7FW

TEL: 01442 211848  
FAX: 01442 212776  
EMAIL: sales@nacd.co.uk  
WEB: www.telephoneentry.co.uk



Fire escape strategy needs to be confirmed and signed off.

AOV / Fire relay is part of AOV / Fire system and must always be supplied and programmed by AOV / Fire company.