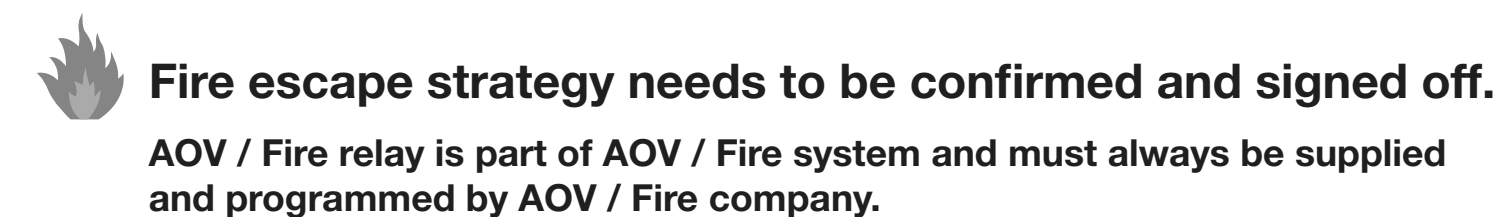


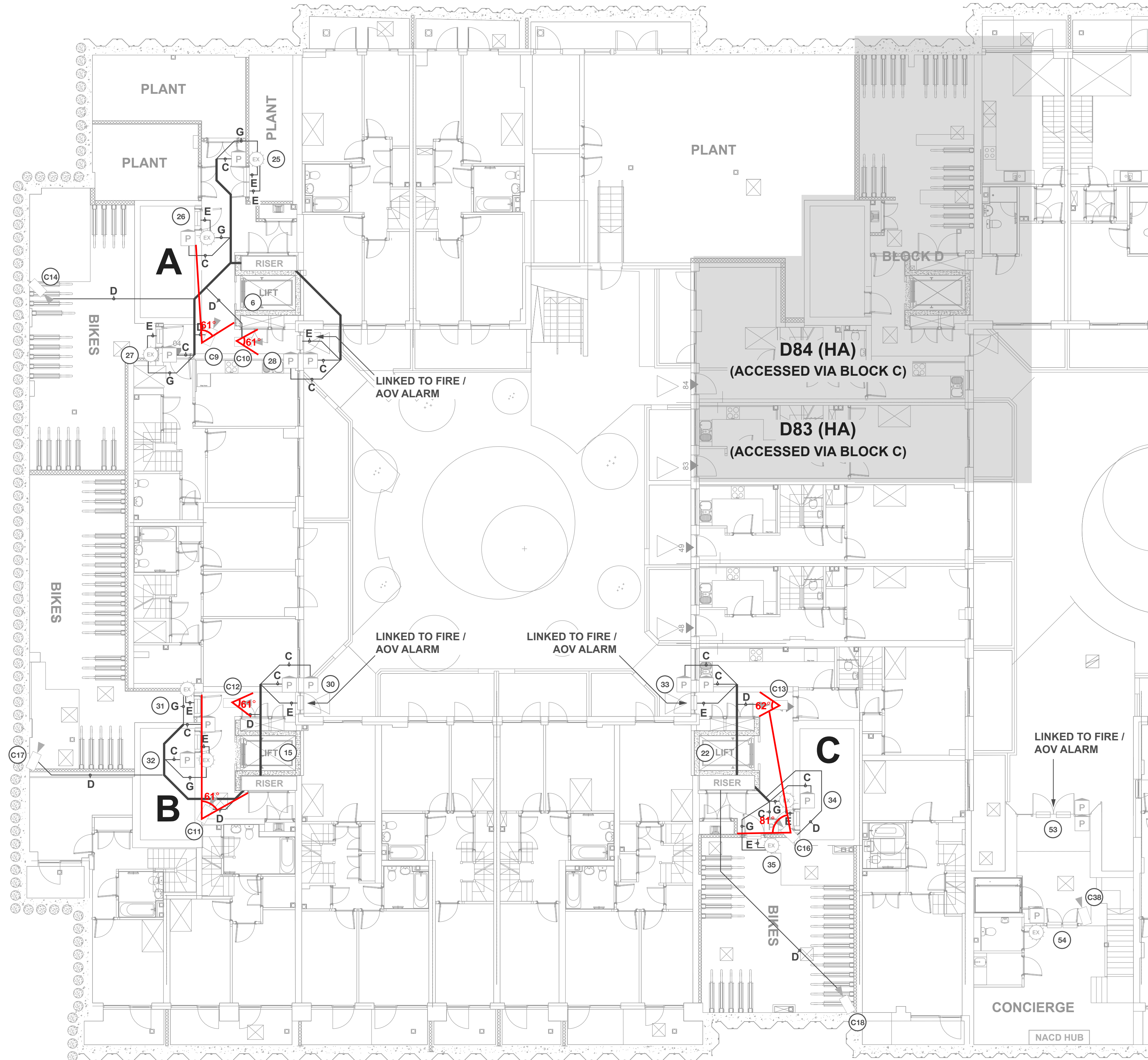
Block C = 36no flats on 7no levels (G-6) including 3no ground maisonettes with own entrances = HA


9871-E-2-0099(1) REV T6
9871-E-2-0100(1) REV T5
9871-E-2-0101(1) REV T5
9871-E-2-0102(1) REV T4
9871-E-2-0103(1) REV T4
9871-E-2-0104(1) REV T4
9871-E-2-0105(1) REV T4
9871-E-2-0106(1) REV T4



TEL: 01442 211848
FAX: 01442 212776
EMAIL: sales@nacd.co.uk
WEB: www.telephoneentry.co.uk

BLOCKS A, B & C, LOWER GROUND FLOOR, HA



 **Fire escape strategy needs to be confirmed and signed off.**

AOV / Fire relay is part of AOV / Fire system and must always be supplied and programmed by AOV / Fire company.

Drawings MUST always be read in conjunction with the latest NACD Legend PDF

CABLING CODES

- A** CATSE x 5no
+ EARTH 1.5mm² (6491X)
- B** 3-core 1.5mm² flex cable (3183Y)
- C** CATSE
+ EARTH 1.5mm² (6491X)
- D** CATSE
- E** Power cable ref. 4 x 1 YY CC per lock
(4-core, 1mm²/core)
- F** CATSE x 2no
- G** Power cable ref. 4 x 1 YY CC per lock
(4-core, 1mm²/core)
+ CATSE
- K** CATSE + Power cable
(2-core, 0.75mm²/core)
- M** CATSE x 5no

- N CAT5E x 10no
- Q CAT5E UTP 25 PAIR
- R CAT5E shielded x 1no
- S CAT5E shielded x 2no
- T LSZH 4001P1644-08 x 1no
- W Power cable (2-core, 0.75mm²/core)
- Y CT100
- Z CT125

Cable runs shown are for drawing clarity only, actual physical routes to be determined by site.

Also refer to Full Cabling on Legend sheet.

IMPORTANT

For further information on the following, please refer to the **NACD Legend PDF**:

- COMMUNICATIONS
- PROGRAMMING
- FIXING HEIGHTS
- SPACE / POWER

LOCKING

Locking shown for cabling information only and NOT included in quotations unless expressly stated otherwise.
All locking to be 12VDC Fail Safe. All doors must have a mechanical means of exit, or a green emergency breakglass exit device, or a self-resetting emergency exit device on the secure side to guarantee safe exit in emergencies.

Refer to the **NACD Legend PDF**.

NOTES

CCTV Notes:

41no CCTV cameras on Blocks A, B & C.

AMENDMENTS

REV.	DATE	DEP.	DETAIL OF AMENDMENT	REF.

POST TENDER VERSION 4

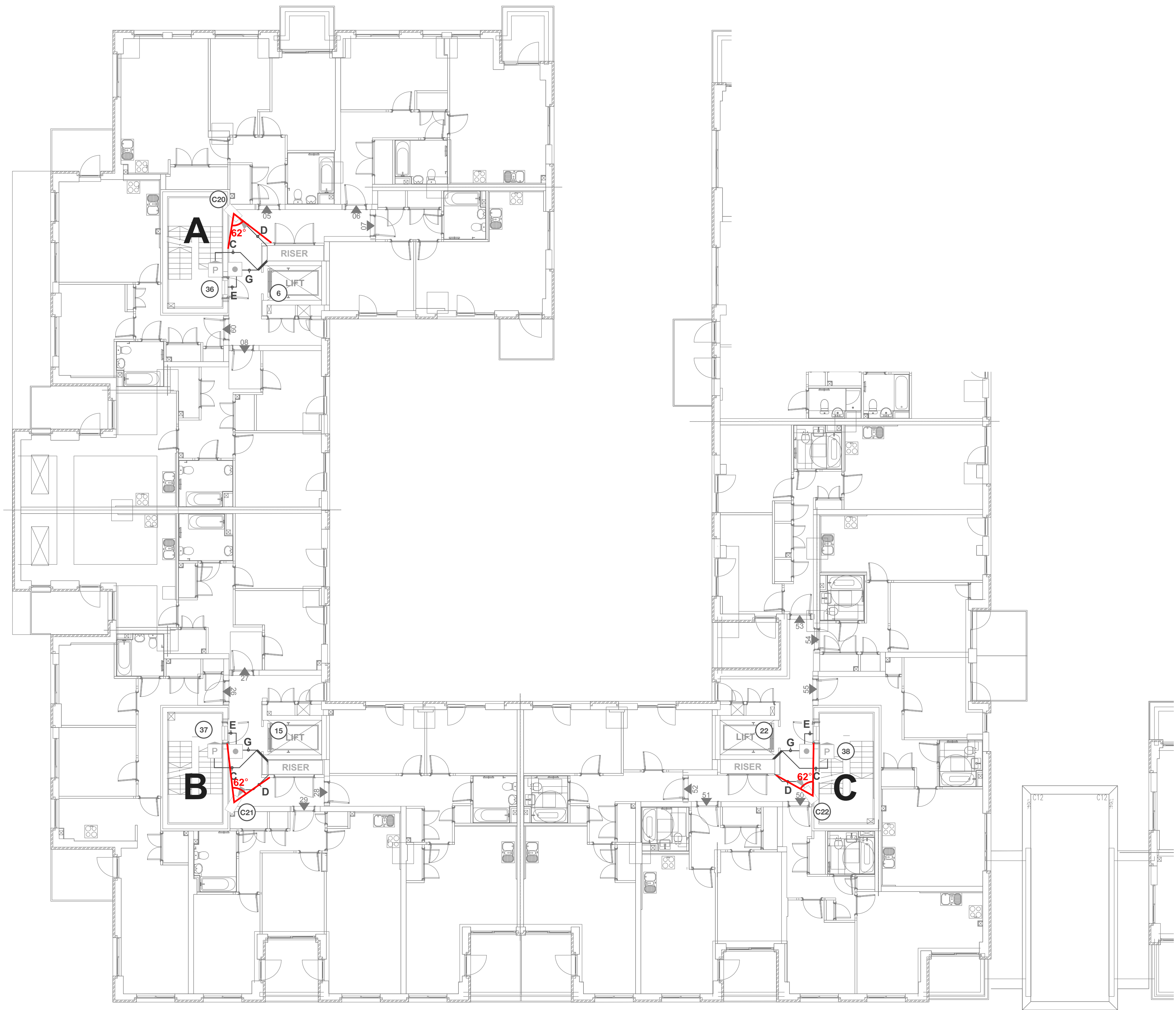
SCALE	DESIGNED BY	PROJECT REF.	CLIENT
NTS	AJF	Q2944	BARRATT LONDON \ WILTON
INSTALL ENG	PROJECT MGR	DATE	PROJECT
		11/11/16	79 CAMDEN ROAD, NW11 9EU
PAGE	DRAWING REF.	REVISION	TITLE
4	BLW\79CRM1004	F	BLOCKS A, B & C, LOWER GROUND FLOOR, DOOR ENTRY, ACCESS CONTROL & CCTV

NACD
ACCESS • COMMUNICATIONS • CCTV


N.A.C.D. Limited,
Unit 8, Heron Business Park,
Eastman Way,
Hemel Hempstead,
Hertfordshire HP2 7FW

TEL: 01442 211848
FAX: 01442 212776
EMAIL: sales@nacd.co.uk
WEB: www.telephoneentry.co.uk

BLOCKS A, B & C, FIRST FLOOR, HA



Notes: All stairwell doors linked to Fire / AOV alarm to fail safe on activation.

 Fire escape strategy needs to be confirmed and signed off.
AOV / Fire relay is part of AOV / Fire system and must always be supplied and programmed by AOV / Fire company.

Drawings MUST always be read in conjunction with the latest NACD Legend PDF

CABLING CODES	
A CAT5E x 5no + EARTH 1.5mm² (6491X)	N CAT5E x 10no
B 3-core 1.5mm² flex cable (3183Y)	Q CAT5E UTP 25 PAIR
C CAT5E + EARTH 1.5mm² (6491X)	R CAT5E shielded x 1no
D CAT5E	S CAT5E shielded x 2no
E Power cable ref. 4 x 1 YY CC per lock (4-core, 1mm²/core)	T LSZH 4001P1644-08 x 1no
F CAT5E x 2no	W Power cable (2-core, 0.75mm²/core)
G Power cable ref. 4 x 1 YY CC per lock (4-core, 1mm²/core) + CAT5E	Y CT100
K CAT5E + Power cable (2-core, 0.75mm²/core)	Z CT125
M CAT5E x 5no	
Cable runs shown are for drawing clarity only, actual physical routes to be determined by site. Also refer to Full Cabling on Legend sheet.	

IMPORTANT	LOCKING
For further information on the following, please refer to the NACD Legend PDF: • COMMUNICATIONS • PROGRAMMING • FIXING HEIGHTS • SPACE / POWER	Locking shown for cabling information only and NOT included in quotations unless expressly stated otherwise. All locking to be 12VDC Fail Safe. All doors must have a mechanical means of exit, or a green emergency breakglass exit device, or a self-resetting emergency exit device on the secure side to guarantee safe exit in emergencies. Refer to the NACD Legend PDF.

NOTES	
	CCTV Notes: 41no CCTV cameras on Blocks A, B & C.

AMENDMENTS				
REV.	DATE	DEP	DETAIL OF AMENDMENT	REF.

POST TENDER VERSION 4			
SCALE	DESIGNED BY	PROJECT REF.	CLIENT
NTS	AJF	Q2944	BARRATT LONDON \ WILTON
INSTALL. ENG.	PROJECT MGR.	DATE	PROJECT
		11/11/16	79 CAMDEN ROAD, NW11 9EU
PAGE	DRAWING REF.	REVISION	TITLE
5	BL/W/79CR/1005	F	BLOCKS A, B & C, FIRST FLOOR, DOOR ENTRY, ACCESS CONTROL & CCTV

NACD ACCESS • COMMUNICATIONS • CCTV	N.A.C.D. Limited, Unit 8, Heron Business Park, Eastman Way, Hemel Hempstead, Hertfordshire HP2 7FW	TEL: 01442 211848 FAX: 01442 212776 EMAIL: sales@nacd.co.uk WEB: www.telephoneentry.co.uk
---	--	--

BLOCKS A, B & C, SECOND FLOOR, HA



Notes: All stairwell doors linked to Fire / AOV alarm to fail safe on activation.



Fire escape strategy needs to be confirmed and signed off.

AOV / Fire relay is part of AOV / Fire system and must always be supplied and programmed by AOV / Fire company.

Drawings MUST always be read in conjunction with the latest NACD Legend PDF

CABLING CODES

- A CATSE x 5no
+ EARTH 1.5mm² (6491X)
- B 3-core 1.5mm² flex cable (3183Y)
- C CATSE
+ EARTH 1.5mm² (6491X)
- D CATSE
- E Power cable ref. 4 x 1 YY CC per lock
(4-core, 1mm²/core)
- F CATSE x 2no
- G Power cable ref. 4 x 1 YY CC per lock
(4-core, 1mm²/core)
+ CATSE
- K CATSE + Power cable
(2-core, 0.75mm²/core)
- M CATSE x 5no

N CAT5E x 10no
Q CAT5E UTP 25 PAIR
R CAT5E shielded x 1no
S CAT5E shielded x 2no
T LSZH 4001P1644-08 x 1no
W Power cable (2-core, 0.75mm²/core)
Y CT100
Z CT125

Cable runs shown are for drawing clarity only, actual physical routes to be determined by site.

Also refer to Full Cabling on Legend sheet.

IMPORTANT

For further information on the following, please refer to the **NACD Legend PDF**:

- COMMUNICATIONS
- PROGRAMMING
- FIXING HEIGHTS
- SPACE / POWER

LOCKING

Locking shown for cabling information only and NOT included in quotations unless expressly stated otherwise.
All locking to be 12VDC Fail Safe. All doors must have a mechanical means of exit, or a green emergency breakglass exit device, or a self-resetting emergency exit device on the secure side to guarantee safe exit in emergencies.

Refer to the **NACD Legend PDF**.

NOTES

CCTV Notes:

41no CCTV cameras on Blocks A, B & C.

AMENDMENTS

REV.	DATE	DEP.	DETAIL OF AMENDMENT	REF.

POST TENDER VERSION 4

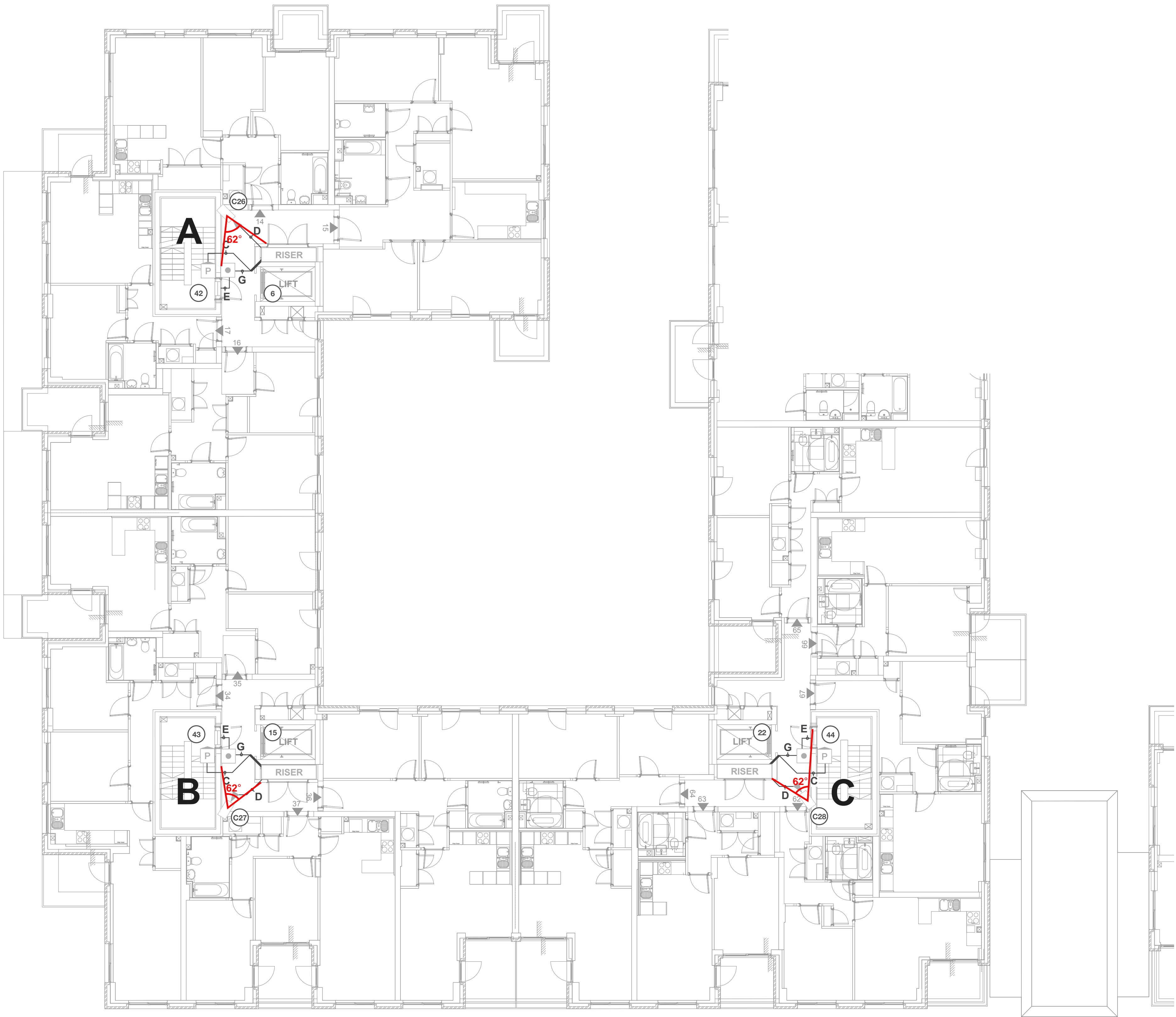
SCALE	DESIGNED BY	PROJECT REF.	CUSTOMER
NTS	AJF	Q2944	BARRATT LONDON \ WILTON
INSTALL ENG	PROJECT MGR	DATE	PROJECT
		11/11/16	79 CAMDEN ROAD, NW1 9EU
PAGE	DRAWING REF.	REVISION	TITLE
6	BLW/79CR/1006	F	BLOCKS A, B & C, SECOND FLOOR, DOOR ENTRY, ACCESS CONTROL & CCTV




N.A.C.D. Limited,
Unit 8, Heron Business Park,
Eastman Way,
Hemel Hempstead,
Hertfordshire HP2 7FW

TEL: 01442 211848
FAX: 01442 212776
EMAIL: sales@nacd.co.uk
WEB: www.telephoneentry.co.uk

BLOCKS A, B & C, THIRD FLOOR, HA



Notes: All stairwell doors linked to Fire / AOV alarm to fail safe on activation.

 Fire escape strategy needs to be confirmed and signed off.
AOV / Fire relay is part of AOV / Fire system and must always be supplied and programmed by AOV / Fire company.

Drawings MUST always be read in conjunction with the latest NACD Legend PDF

CABLING CODES	
A CAT5E x 5no + EARTH 1.5mm² (6491X)	N CAT5E x 10no Q CAT5E UTP 25 PAIR
B 3-core 1.5mm² flex cable (3183Y)	R CAT5E shielded x 1no
C CAT5E + EARTH 1.5mm² (6491X)	S CAT5E shielded x 2no
D CAT5E	T LSZH 4001P1644-08 x 1no
E Power cable ref. 4 x 1 YY CC per lock (4-core, 1mm²/core)	W Power cable (2-core, 0.75mm²/core)
F CAT5E x 2no	Y CT100
G Power cable ref. 4 x 1 YY CC per lock (4-core, 1mm²/core) + CAT5E	Z CT125
K CAT5E + Power cable (2-core, 0.75mm²/core)	
M CAT5E x 5no	

Cable runs shown are for drawing clarity only, actual physical routes to be determined by site.
Also refer to Full Cabling on Legend sheet.

IMPORTANT	LOCKING
For further information on the following, please refer to the NACD Legend PDF: • COMMUNICATIONS • PROGRAMMING • FIXING HEIGHTS • SPACE / POWER	Locking shown for cabling information only and NOT included in quotations unless expressly stated otherwise. All locking to be 12VDC Fail Safe. All doors must have a mechanical means of exit, or a green emergency breakglass exit device, or a self-resetting emergency exit device on the secure side to guarantee safe exit in emergencies. Refer to the NACD Legend PDF.

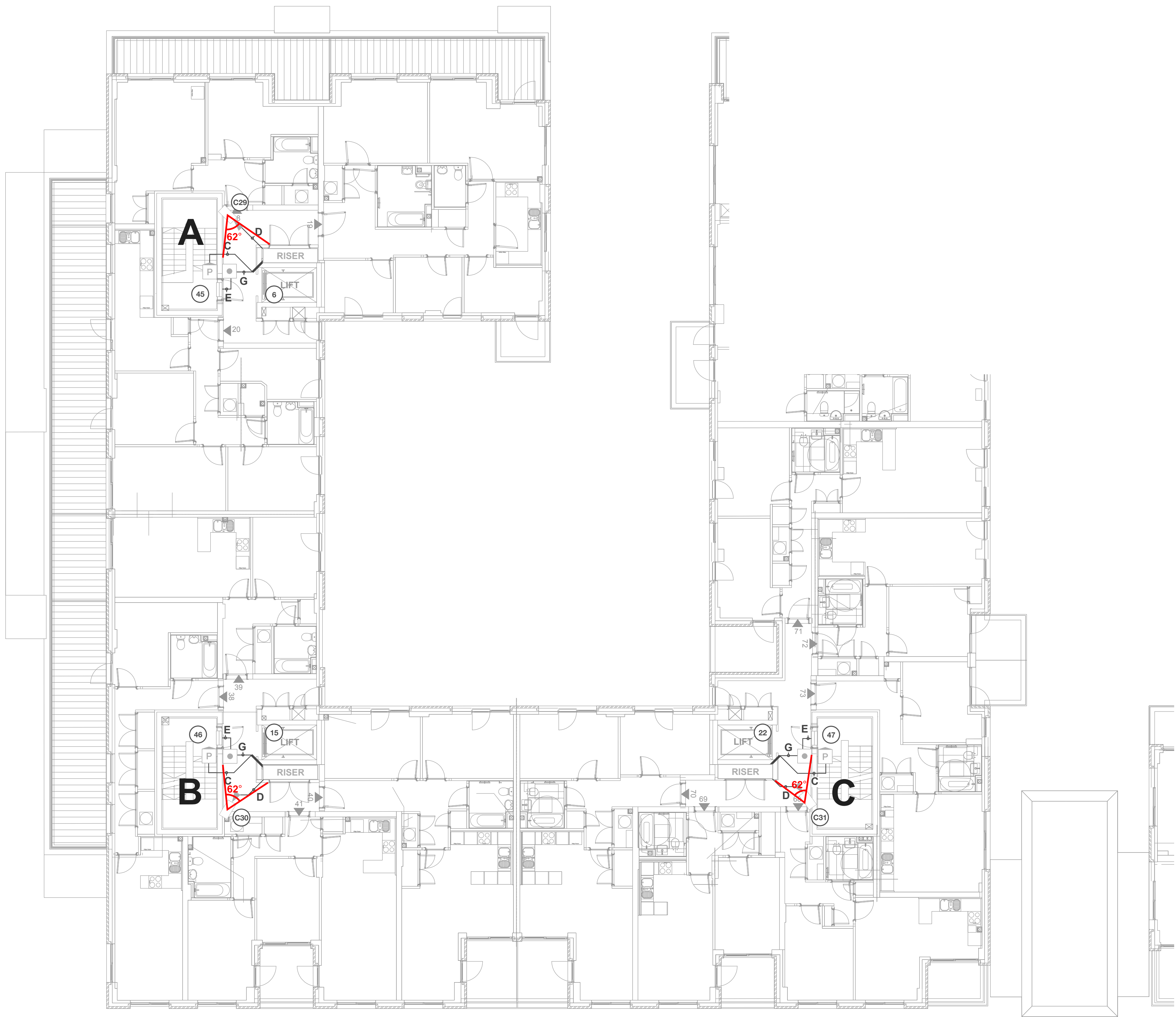
NOTES	
	CCTV Notes: 41no CCTV cameras on Blocks A, B & C.

AMENDMENTS				
REV.	DATE	DEP	DETAIL OF AMENDMENT	REF.


POST TENDER VERSION 4			
SCALE NTS	DESIGNED BY A,JF	PROJECT REF. Q2944	CLIENT BARRATT LONDON \ WILTON
INSTALL END	PROJECT MGR	DATE 11/11/16	PROJECT 79 CAMDEN ROAD, NW1 9EU
PAGE 7	DRAWING REF. BL/W/79CR/1007	REVISION F	TITLE BLOCKS A, B & C, THIRD FLOOR, DOOR ENTRY, ACCESS CONTROL & CCTV

NACD ACCESS • COMMUNICATIONS • CCTV	N.A.C.D. Limited, Unit 8, Heron Business Park, Eastman Way, Hemel Hempstead, Hertfordshire HP2 7FW	TEL: 01442 211848 FAX: 01442 212776 EMAIL: sales@nacd.co.uk WEB: www.telephoneentry.co.uk
---	--	--

BLOCKS A, B & C, FOURTH FLOOR, HA



Notes: All stairwell doors linked to Fire / AOV alarm to fail safe on activation.

 Fire escape strategy needs to be confirmed and signed off.
AOV / Fire relay is part of AOV / Fire system and must always be supplied and programmed by AOV / Fire company.

Drawings MUST always be read in conjunction with the latest NACD Legend PDF

CABLING CODES	
A CAT5E x 5no + EARTH 1.5mm² (6491X)	N CAT5E x 10no
B 3-core 1.5mm² flex cable (3183Y)	Q CAT5E UTP 25 PAIR
C CAT5E + EARTH 1.5mm² (6491X)	R CAT5E shielded x 1no
D CAT5E	S CAT5E shielded x 2no
E Power cable ref. 4 x 1 YY CC per lock (4-core, 1mm²/core)	T LSZH 4001P1644-08 x 1no
F CAT5E x 2no	W Power cable (2-core, 0.75mm²/core)
G Power cable ref. 4 x 1 YY CC per lock (4-core, 1mm²/core) + CAT5E	Y CT100
K CAT5E + Power cable (2-core, 0.75mm²/core)	Z CT125
M CAT5E x 5no	

Cable runs shown are for drawing clarity only, actual physical routes to be determined by site.
Also refer to Full Cabling on Legend sheet.

IMPORTANT	LOCKING
For further information on the following, please refer to the NACD Legend PDF: • COMMUNICATIONS • PROGRAMMING • FIXING HEIGHTS • SPACE / POWER	Locking shown for cabling information only and NOT included in quotations unless expressly stated otherwise. All locking to be 12VDC Fail Safe. All doors must have a mechanical means of exit, or a green emergency breakglass exit device, or a self-resetting emergency exit device on the secure side to guarantee safe exit in emergencies. Refer to the NACD Legend PDF.

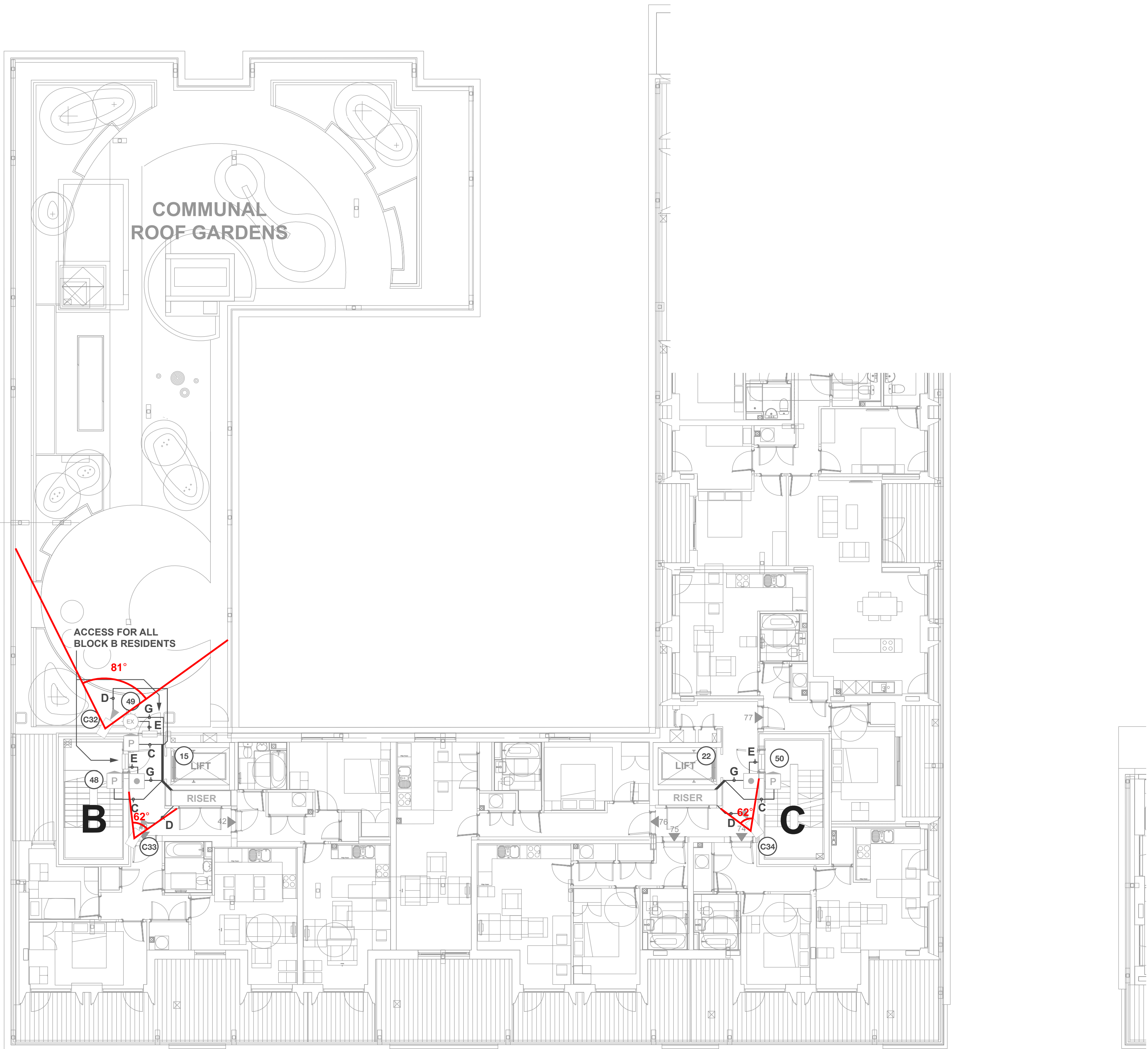
NOTES	
	CCTV Notes: 41no CCTV cameras on Blocks A, B & C.

AMENDMENTS				
REV.	DATE	DEP	DETAIL OF AMENDMENT	REF.


POST TENDER VERSION 4			
SCALE	DESIGNED BY	PROJECT REF.	CLIENT
NTS	AJF	Q2944	BARRATT LONDON \ WILTON
INSTALL. END	PROJECT MGR	DATE	PROJECT
		11/11/16	79 CAMDEN ROAD, NW1 9EU
PAGE	DRAWING REF.	REVISION	TITLE
8	BL/W/79CR/1008	F	BLOCKS A, B & C, FOURTH FLOOR, DOOR ENTRY, ACCESS CONTROL & CCTV

NACD ACCESS • COMMUNICATIONS • CCTV	N.A.C.D. Limited, Unit 8, Heron Business Park, Eastman Way, Hemel Hempstead, Hertfordshire HP2 7FW	TEL: 01442 211848 FAX: 01442 212776 EMAIL: sales@nacd.co.uk WEB: www.telephoneentry.co.uk
---	--	--

BLOCKS A, B & C, FIFTH FLOOR, HA



Notes: All stairwell doors linked to Fire / AOV alarm to fail safe on activation.

 **Fire escape strategy needs to be confirmed and signed off.**
AOV / Fire relay is part of AOV / Fire system and must always be supplied and programmed by AOV / Fire company.

Drawings MUST always be read in conjunction with the latest NACD Legend PDF

CABLING CODES

- A** CAT5E x 5no
+ EARTH 1.5mm² (6491X)
- B** 3-core 1.5mm² flex cable (3183Y)
- C** CAT5E
+ EARTH 1.5mm² (6491X)
- D** CAT5E
- E** Power cable ref. 4 x 1 YY CC per lock
(4-core, 1mm²/core)
- F** CAT5E x 2no
- G** Power cable ref. 4 x 1 YY CC per lock
(4-core, 1mm²/core)
+ CAT5E
- K** CAT5E + Power cable
(2-core, 0.75mm²/core)
- M** CAT5E x 5no

N CAT5E x 10no
Q CAT5E UTP 25 PAIR
R CAT5E shielded x 1no
S CAT5E shielded x 2no
T LSZH 4001P1644-08 x 1no
W Power cable (2-core, 0.75mm²/core)
Y CT100
Z CT125

Cable runs shown are for drawing clarity only, actual physical routes to be determined by site.

Also refer to Full Cabling on Legend sheet

IMPORTANT

For further information on the following
please refer to the **NACD Legend PDF**

- COMMUNICATIONS
- PROGRAMMING
- FIXING HEIGHTS
- SPACE / POWER

LOCKING

Locking shown for cabling information only and NOT included in quotations unless expressly stated otherwise.

All locking to be 12VDC Fail Safe. All doors must have a mechanical means of exit, or a green emergency breakglass exit device, or a self-resetting emergency exit device on the secure side to guarantee safe exit in emergencies.

Refer to the **NACD Legend PDF**.

NOTES

CCTV Notes

1no CCTV cameras on Blocks A, B & C.

AMENDMENTS

REV.	DATE	DEP	DETAIL OF AMENDMENT	REF

POST TENDER VERSION 4

SCALE	DESIGNED BY	PROJECT REF.	CLIENT
NTS	AJF	Q2944	BARRATT LONDON \ WILTON
DETAIL ENG.	PROJECT MGR	DATE	PROJECT
		11/11/16	79 CAMDEN ROAD, NW1 9EU
AGE	DRAWING REF.	REVISION	TITLE
9	BL/W/79CR/1009	F	FLOORS A, B & C, FIFTH FLOOR, DOOR ENTRY, ACCESS CONTROL & CCTV

NACD
ACCESS • COMMUNICATIONS • CCTV

N.A.C.D. Limited,
Unit 8, Heron Business Park,
Eastman Way,
Hemel Hempstead,
Hertfordshire HP2 7FW

TEL: 01442 211848
FAX: 01442 212776
EMAIL: sales@nacd.co.uk
WEB: www.telephoneentry.co.uk

BLOCKS A, B & C, SIXTH FLOOR, HA



Notes: All stairwell doors linked to Fire / AOV alarm to fail safe on activation.



Fire escape strategy needs to be confirmed and signed off.

AOV / Fire relay is part of AOV / Fire system and must always be supplied and programmed by AOV / Fire company.

Drawings MUST always be read in conjunction with the latest NACD Legend PDF

CABLING CODES

- A** CATSE x 5no
+ EARTH 1.5mm² (6491X)
- B** 3-core 1.5mm² flex cable (3183Y)
- C** CATSE
+ EARTH 1.5mm² (6491X)
- D** CATSE
- E** Power cable ref. 4 x 1 YY CC per lock
(4-core, 1mm²/core)
- F** CATSE x 2no
- G** Power cable ref. 4 x 1 YY CC per lock
(4-core, 1mm²/core)
+ CATSE
- K** CATSE + Power cable
(2-core, 0.75mm²/core)
- M** CATSE x 5no

- N CAT5E x 10no
- Q CAT5E UTP 25 PAIR
- R CAT5E shielded x 1no
- S CAT5E shielded x 2no
- T LSZH 4001P1644-08 x 1no
- W Power cable (2-core, 0.75mm²/core)
- Y CT100
- Z CT125

Cable runs shown are for drawing clarity only, actual physical routes to be determined by site.

Also refer to Full Cabling on Legend sheet.

IMPORTANT

For further information on the following, please refer to the **NACD Legend PDF**:

- COMMUNICATIONS
- PROGRAMMING
- FIXING HEIGHTS
- SPACE / POWER

LOCKING

Locking shown for cabling information only and NOT included in quotations unless expressly stated otherwise.
All locking to be 12VDC Fail Safe. All doors must have a mechanical means of exit, or a green emergency break/glass exit device, or a self-resetting emergency exit device on the secure side to guarantee safe exit in emergencies.

Refer to the **NACD Legend PDF**.

NOTES

CCTV Notes:

41no CCTV cameras on Blocks A, B & C.

AMENDMENTS

REV.	DATE	DEP.	DETAIL OF AMENDMENT	REF.

POST TENDER VERSION 4

SCALE	DESIGNED BY	PROJECT REF	CLIENT
NTS	AJF	Q2944	BARRATT LONDON \ WILTON
INSTALL ENG	PROJECT MGR	DATE	PROJECT
		11/11/16	79 CAMDEN ROAD, NW1 9EU
PAGE	DRAWING REF.	REVISION	TITLE
10	BLW/79CR/10010	F	BLOCKS A, B & C, SIXTH FLOOR, DOOR ENTRY, ACCESS CONTROL & CCTV



N.A.C.D. Limited,
Unit 8, Heron Business Park,
Eastman Way,
Hemel Hempstead,
Hertfordshire HP2 7FW

TEL: 01442 211848
FAX: 01442 212776
EMAIL: sales@nacd.co.uk
WEB: www.telephoneentry.co.uk