

BEAMS TO BE PROPPED IMMEDIATELY AND UNTIL CONSTRUCTION IS COMPLETE.

REPLACE TIMBER WALL PLATE IF IN POOR CONDITION/ROTTEN.

APPROX. EXTENT OF HIP RAFTER TO BE REMOVED SHOWN HATCHED.

PLAN VIEW

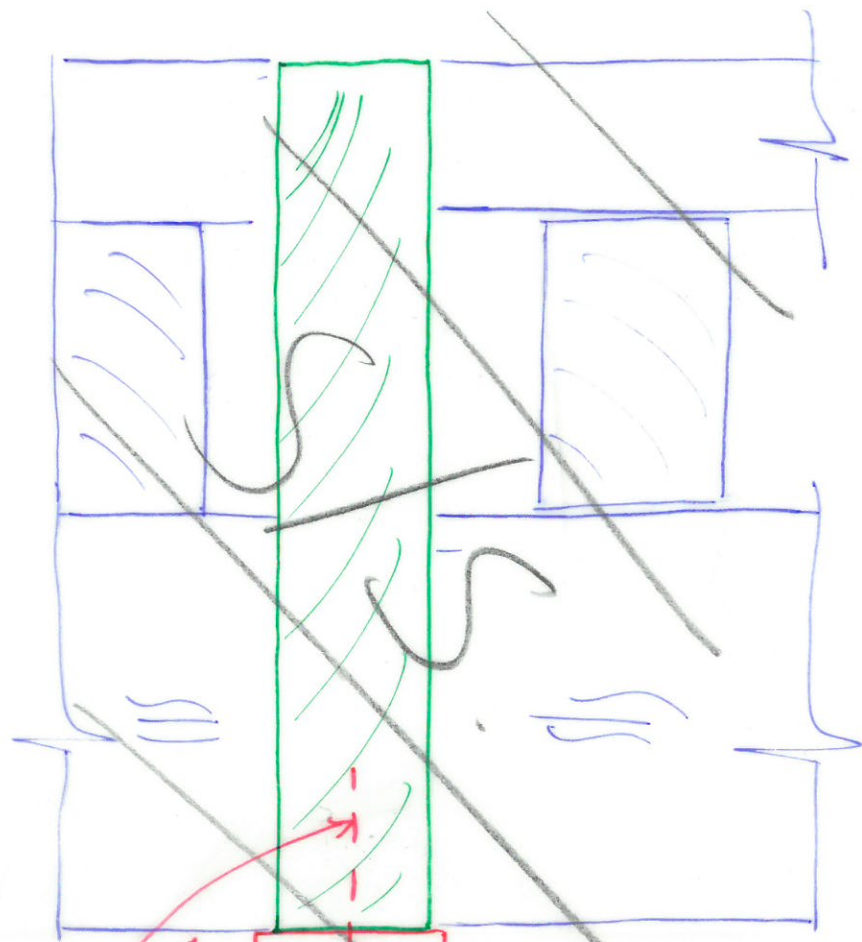
PLAN VIEW.
STABLES MARKET ROOF
3788/SK/151012/TTU/01A.

KEY

- - - 50x75 Dp C24 RAFTERS TO MATCH EXISTING.
- == STRENGTHENING WORKS REQUIRED.

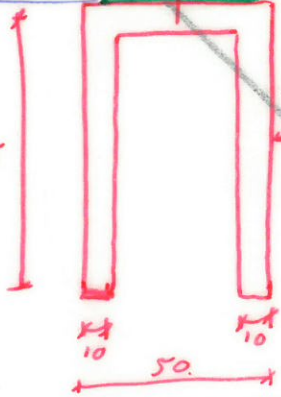


Structural and Civil Engineers
32 Lafone Street
London
SE1 2LX
t. +44 (0)20 7089 6800
e. london@walsh.co.uk
walsh.co.uk

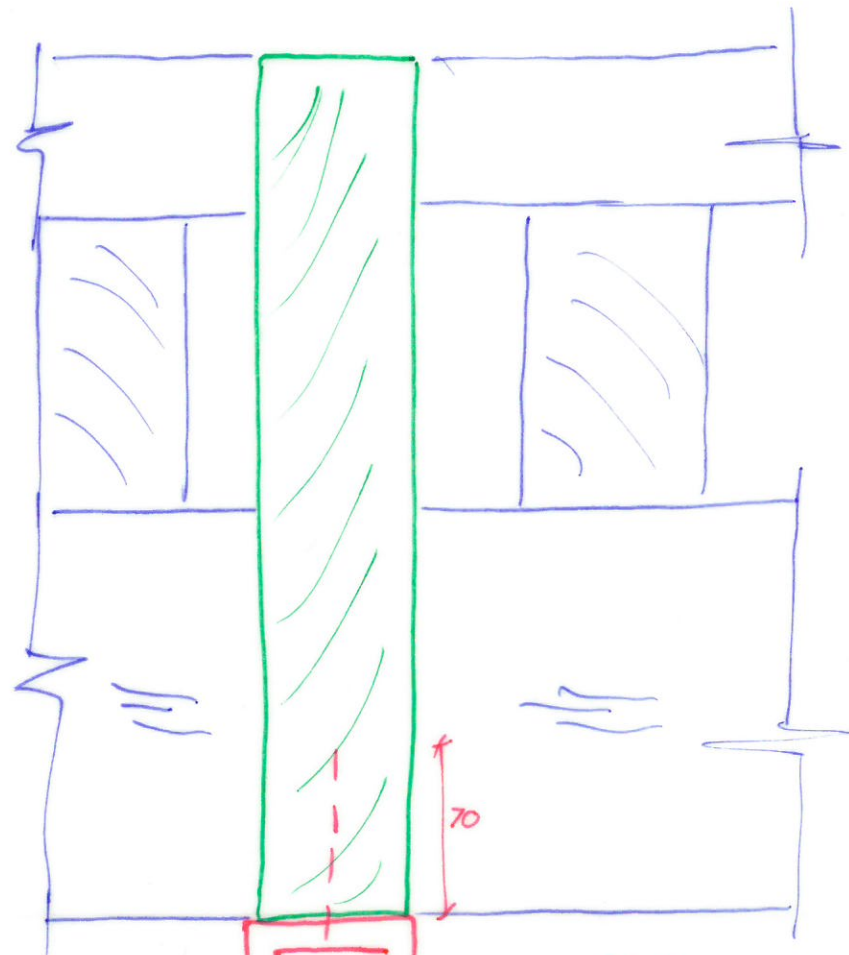


6x70mm LONG COACH SCREWS @ 300c/c ALONG ENTIRE BEAM. 150c/c AT ENDS FOR LAST 4 SCREWS.

S355 STEEL SECTION FABRICATED FROM PLATES ALONG ENTIRE LENGTH OF HIP RAFTERS.



SECTION Y-Y,
OPTION 1



SCREW THROUGH BOX SECTION. 300c/c ALONG ENTIRE BEAM, EXCEPT 150c/c AT ENDS FOR LAST 4 SCREWS.

80x40x8 RHS, S355. ALONG ENTIRE LENGTH OF HIP RAFTERS.



SECTION Y-Y
OPTION 2

SECTION Y-Y.
STABLES MANSARD ROOF
3788/SK/151012/TM/02A.

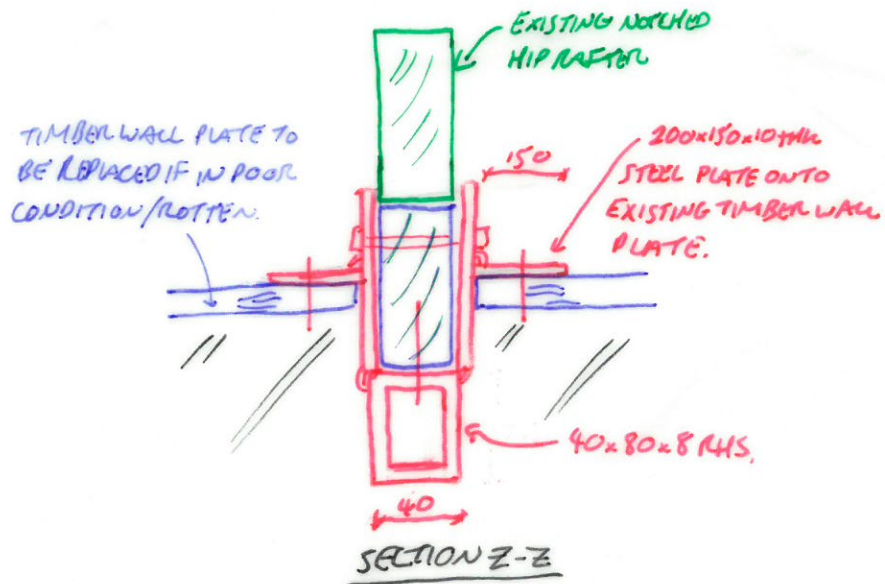


WALSH

Structural and Civil Engineers

32 Lafone Street
London
SE1 2LX
t. +44 (0)20 7089 6800
e. london@walsh.co.uk

walsh.co.uk



EXISTING NOTCHED HIP RAFTER

NAIL PLATE. ALL NAILS TO BE 4Φ FROM EDGES OF TIMBER PLATE ON BOTH FACES.

EXISTING PURLIN RETAINED

400 MIN.

200 MIN.

10mm PACKING IF REQUIRED.

2 No 8mm THK STEEL PLATES WELDED TO RHS..
5 No M8 THROUGH BOLTS. EDGE DISTANCE 4Φ.

C24 TIMBER WFILL CUT TO SUIT EXISTING.

6mm COACH SCREWS @ 300Φ ALONG ENTIRE BEAM. 150Φ AT ENDS FOR 4 SCREWS.

40x80x8RHS S355.

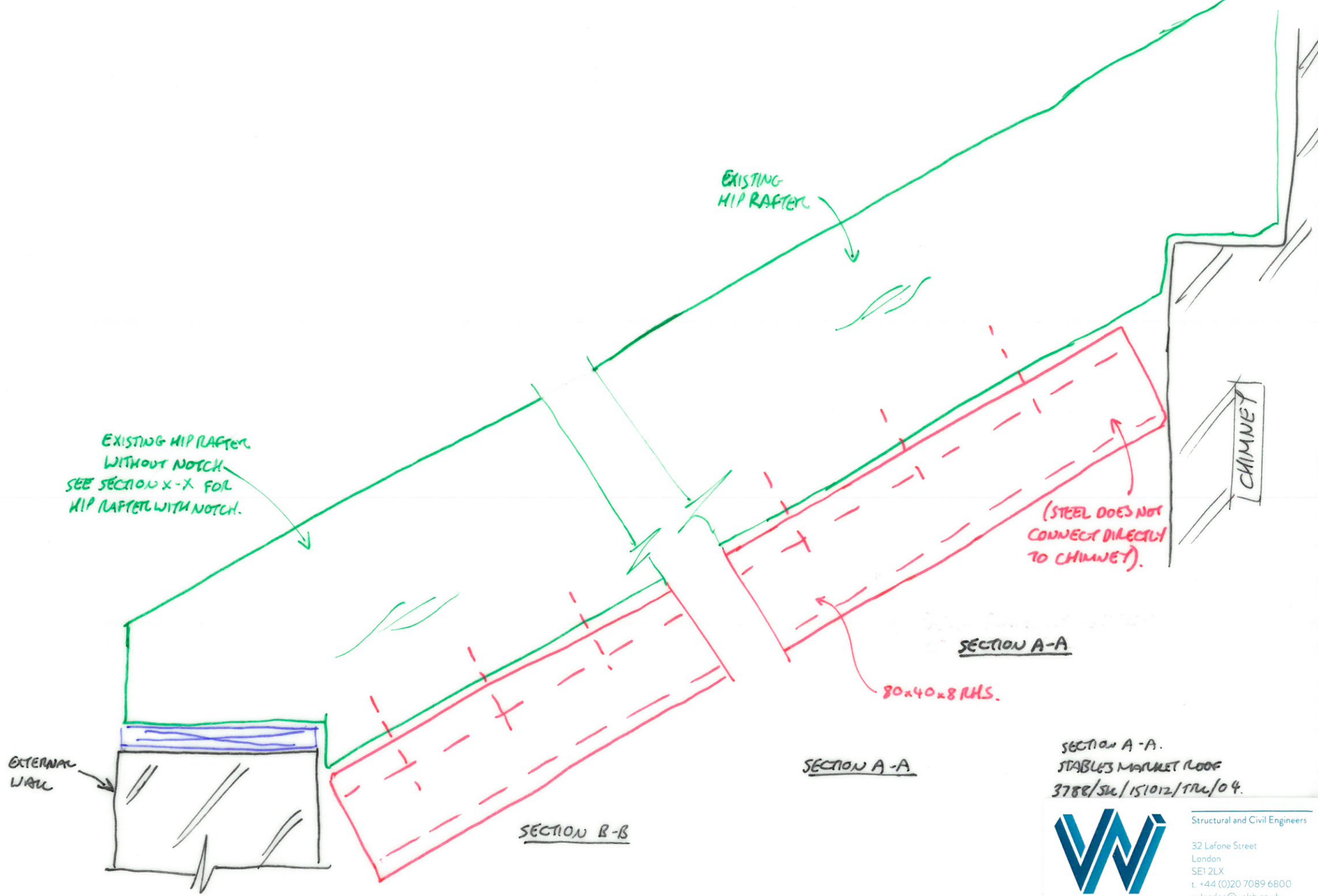
SECTION X-X

SECTION X-X
STABLES MARKET ROOF
3788/56/15/10/12/TM/03



WALSH

Structural and Civil Engineers
32 Lafone Street
London
SE1 2LX
t. +44 (0)20 7089 6800
e. london@walsh.co.uk
walsh.co.uk

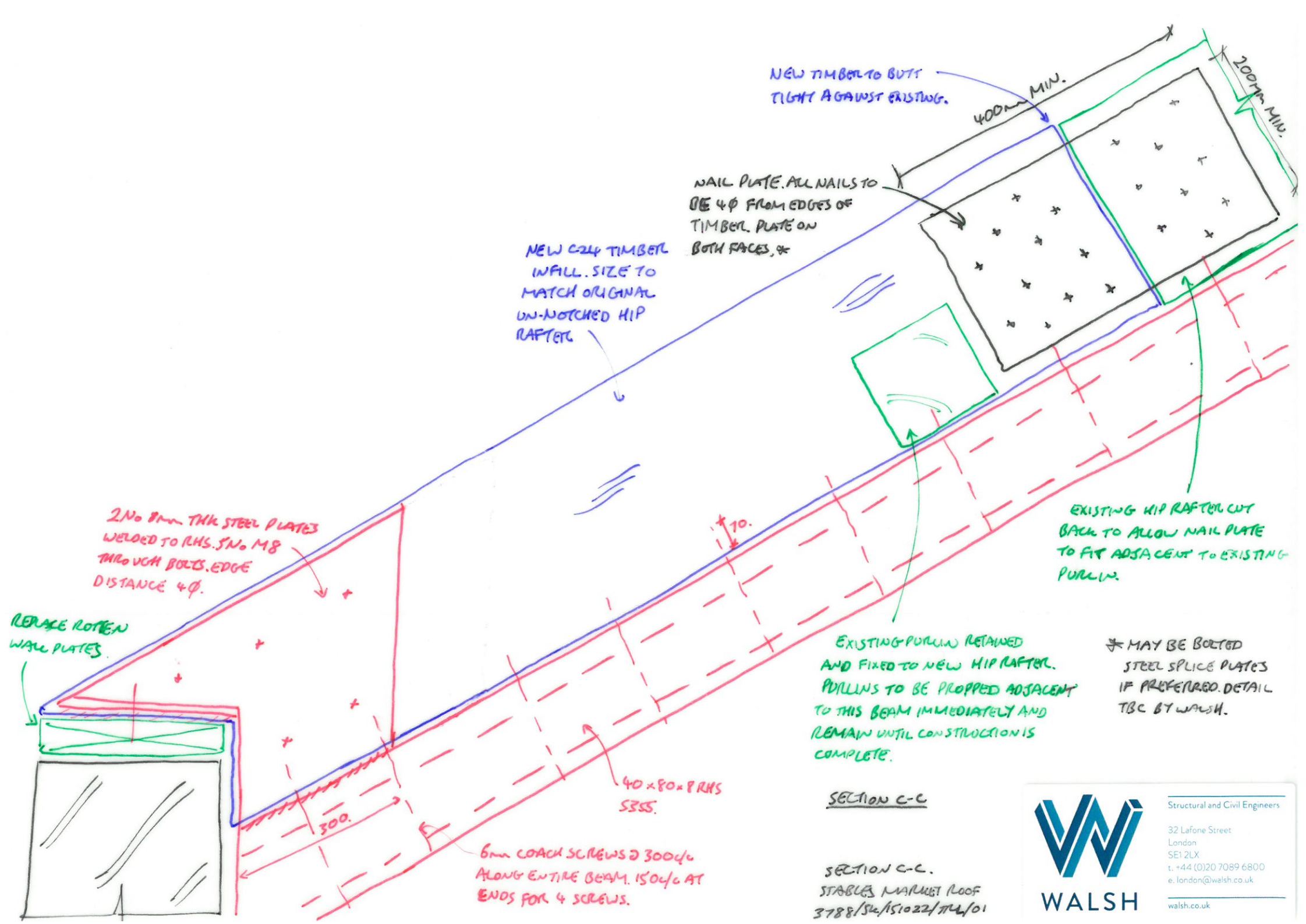


SECTION A-A.
 STABLES MARKET ROOF
 3788/SW/151012/TRU/04.



WALSH

Structural and Civil Engineers
 32 Lafone Street
 London
 SE1 2LX
 t. +44 (0)20 7089 6800
 e. london@walsh.co.uk
 walsh.co.uk



NEW TIMBER TO BUTT TIGHT AGAINST EXISTING.

400mm MIN.

200mm MIN.

NAIL PLATE. ALL NAILS TO BE 4φ FROM EDGES OF TIMBER. PLATE ON BOTH FACES.

NEW C24 TIMBER INFILL. SIZE TO MATCH ORIGINAL UN-NOTCHED HIP RAFTER.

EXISTING HIP RAFTER CUT BACK TO ALLOW NAIL PLATE TO FIT ADJACENT TO EXISTING PURLINS.

2 No 8mm THK STEEL PLATES WELDED TO RHS. S10 M8 THROUGH BOLTS. EDGE DISTANCE 4φ.

REPLACE ROTTEN WALL PLATES.

EXISTING PURLINS RETAINED AND FIXED TO NEW HIP RAFTER. PURLINS TO BE PROPPED ADJACENT TO THIS BEAM IMMEDIATELY AND REMAIN UNTIL CONSTRUCTION IS COMPLETE.

* MAY BE BOLTED STEEL SPLICE PLATES IF PREFERRED. DETAIL TBC BY WALSH.

40x80x8 RHS SSSS.

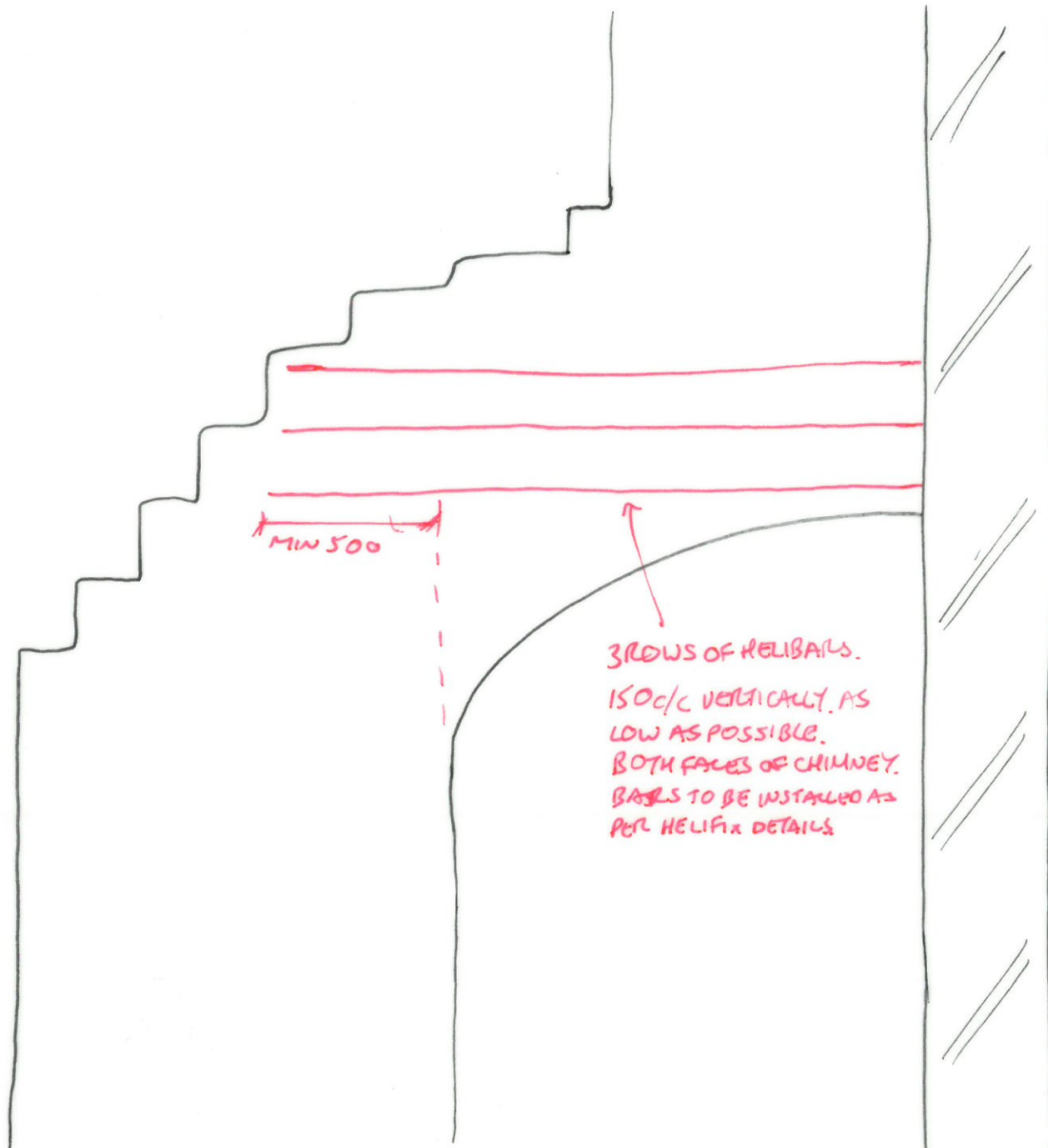
6mm COACH SCREWS @ 300φ ALONG ENTIRE BEAM. 150φ AT ENDS FOR 4 SCREWS.

SECTION C-C

SECTION C-C.
STABLES MARKET ROOF
3788/SK/151022/TU/01



Structural and Civil Engineers
32 Lafone Street
London
SE1 2LX
t. +44 (0)20 7089 6800
e. london@walsh.co.uk
walsh.co.uk



MIN 500

3 ROWS OF HELIBARS.
 150c/c VERTICALLY. AS
 LOW AS POSSIBLE.
 BOTH FACES OF CHIMNEY.
 BARS TO BE INSTALLED AS
 PER HELIFIX DETAILS

CHIMNEY ELEVATION

CHIMNEY REPAIR.
 STABLES MARKET ROOF.
 3788/SK/151022/AV/02.



WALSH

Structural and Civil Engineers

32 Lafone Street
 London
 SE1 2LX
 t. +44 (0)20 7089 6800
 e. london@walsh.co.uk

walsh.co.uk