



Jocelyn Burton Silversmith & Goldsmith Limited

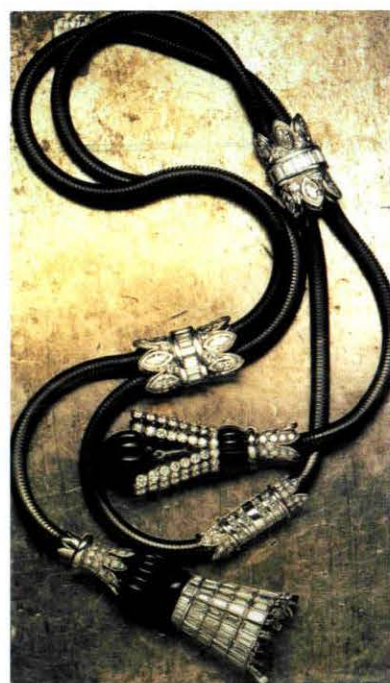
50c Red Lion Street London WC1R 4PF England

Telephone +44 (1) 71 405 3042 Facsimile +44 (1) 71 831 9324

e-mail jocelynburtob@compuserve.com



Jocelyn Burton



NECKLACE

PRIVATE COLLECTION

A WINNING DESIGN OF THE
DIAMONDS-INTERNATIONAL AWARD
1997 SPONSORED BY DE BEERS,
DIAMOND SET SECTIONS AND
18CT WHITE GOLD

NECKLACE

JBS&G LTD

WORLD GOLD COUNCIL AWARD
WINNING DESIGN, MADE IN 22CT
GOLD AND EXHIBITED IN 1997 AT
GARRARD & CO

LION MASK NECKLACE

PRIVATE COLLECTION

SET WITH DIAMONDS, CABOCHON
EMERALDS AND MOUNTED IN
18CT GOLD, 1980



Asprey & Garrard

LONDON

From Rupert Hambro, Chairman of the Silver Trust

My first visit to Jocelyn's studio in Red Lion Street was with Mary Henderson and Christopher English, to see whether she would be an appropriate silversmith to commission a piece for the Silver Trust National Collection. She produced stunning drawings of a pair of candlesticks, the commission was given and now the candlesticks are greatly admired not only in 10 Downing Street but when on exhibition, such as this August in the Cutlers' Hall in Sheffield.

Not long after this commission was completed, Jocelyn asked to see me. She explained that the first two years of the nineties had been tough and that commissions were hard to come by. Did I have any friends who might be interested in her work?

What about me, I thought. In this marvellous exhibition of nearly 30 years of her work you will find silver claret mugs with stems depicting interests of my wife's and my life. These are the results of our meeting. I have enjoyed every moment of working with Jocelyn. I commend all of you who come to this excellent exhibition so thoughtfully organised by Asprey & Garrard, to commission a piece of beautiful silver from her for posterity.

Jocelyn Burton

30 Years of Silver and Jewellery

Asprey & Garrard are delighted to present this Retrospective exhibition of Jocelyn Burton's work of the past thirty years, and to launch her *Living Silver* collection, which has been specially commissioned for this event.

As one of the United Kingdom's leading jewellery designers and silversmiths, Jocelyn's dedication to quality has created a classic and timeless design ethos that is beyond fashion – art as well as craft.

At first she was essentially a jeweller, winning her first De Beers award in 1967, for a stunning diamond necklace design whilst still a student. Later in her career, she also worked as a silversmith. It was then that she became interested in creating pieces of modern silverware reflecting the techniques of the master craftsmen from centuries past – something her contemporaries were not considering at the time.

In 1974 Jocelyn was made a Freeman of the Worshipful Company of Goldsmiths and examples of her work are in the permanent collection at Goldsmiths' Hall. She has undertaken many significant commissions for several of the other City Livery Companies. Her work resides in many important institutions which include, the Victoria and Albert Museum, St. Paul's Cathedral, the Silver Trust National Collection at 10 Downing Street; and in the collections of Their Majesties The King and Queen of Spain, and the Sheikh Mohammed Al-Makhtoum of Dubai.

More recently, her work has increased in scale to include large torchères, chandeliers and substantial centrepieces designed for her international clientele. In 1997 she won for the second time the supreme accolade, the Diamonds-International Award sponsored by De Beers, and in the U.K. Jewellery Awards 1997 she was voted Designer of the Year. Two other significant commissions followed: one for the World Gold Council for their 'East meets West' *Au Couture* collection, which was exhibited at Garrard in November 1997; and in



OFFERTORY SALVER
THE DEAN AND CHAPTER OF LICHFIELD CATHEDRAL
HAND-RAISED SILVER BOWL WITH
MODELLED CAST AND APPLIED
DECORATIVE BORDER DERIVED
FROM THE COLUMNS AND ARCHES
OF LICHFIELD CATHEDRAL. THE
CENTRAL BOSS IS SET WITH LAPIS
LAZULI, 1991



TEAPOT
JMS&G LTD
FROM THE FOUR-SEASONS TEA
SERVICE, THE BODY DECORATED
WITH 'SPRING' TWIGS AND BUDS.
SILVER GILT WITH GLASS HANDLE
AND ROCK-CRYSTAL KNOB, 1998.

**BADGE & CHAIN
OF OFFICE**

LLANDYSUL COMMUNITY COUNCIL
A CONTEMPORARY DESIGN WITH
'LEAPING SALMON AND OAK LEAF'
LINKS TO THE CHAIN, A DOMED
CENTRE MEDALLION OF
TRANSLUCENT BLUE ENAMEL OVER
THE ENGRAVED ARMS OF
LLANDYSUL, SILVER-GILT, 1984



CONDIMENT SET

THE COMPANY OF WATERMEN AND LIGHTER MEN
OF THE RIVER THAMES
A SILVER THREE-PIECE
CONDIMENT SET WITH BLUE GLASS
LINERS, 1990



30 Years of Silver and Jewellery

CANDELABRUM

THE WORSHIPFUL COMPANY OF PAINTER-STAINERS
ONE OF A PAIR OF SILVER FIVE-LIGHT CANDELABRA BEARING CAST 'SHELL' MOTIFS, SYMBOLS WHICH HAVE BECOME SYNONYMOUS WITH JOCELYN BURTON DESIGNS, 1977



CANDELABRUM

THE SILVER TRUST NATIONAL COLLECTION
ONE OF A PAIR OF SILVER CANDELABRA COMMISSIONED IN 1992 FOR THE SILVER TRUST NATIONAL COLLECTION, FOR USE AT 10 DOWNING STREET AND FIRST PRESENTED TO THE PRIME MINISTER IN 1993



THE PLATINUM CUP

THE WORSHIPFUL COMPANY OF GOLDSMITHS
PLATINUM SET WITH CABOCHON AQUAMARINES.
THE DESIGN, INSPIRED BY RENAISSANCE LOVING CUPS AND PRESENTED TO THE GOLDSMITHS' COMPANY, WAS COMMISSIONED BY THE WORLD'S LARGEST PRODUCERS OF PLATINUM, RUSTENBURG MINES, TO COMMEMORATE THE INTRODUCTION OF THE PLATINUM HALLMARK BY THE LONDON ASSAY OFFICE ON 2 JANUARY 1975



TUREEN WITH COVER

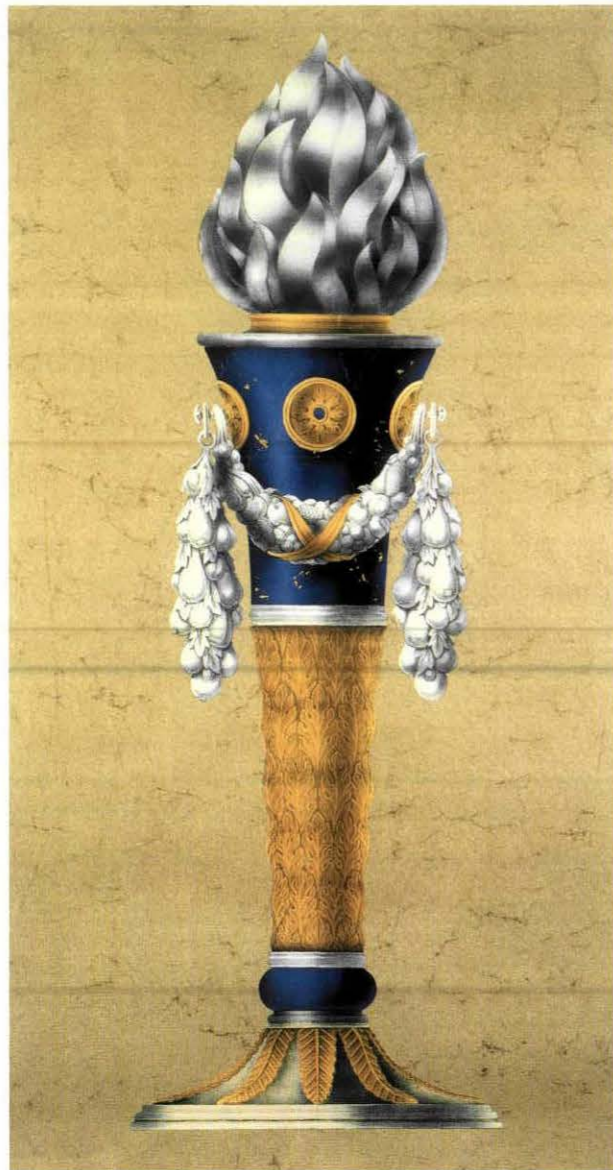
PRIVATE COLLECTION
ONE OF A PAIR OF SILVER-GILT TUREENS, THE MODERN EXOTIC FRUIT COVERS MODELLED BY JOCELYN BURTON IN 1996 ARE FITTED TO BOWLS, WHICH FORM PART OF A LARGER DINNER SERVICE MADE IN 1912 BY SEBASTIAN GARRARD, FOR GARRARD & CO LTD

1998 an important necklace for the Jerwood Foundation, incorporating gemstones and pearls from its collection.

We welcome you to the show, where pieces from the *Living Silver* collection are available for sale, and further personalised special commissions may be undertaken.

Living Silver

30 Years of Silver and Jewellery



**LAPIS LAZULI TABLE
LAMP**

DRAWING AND FINISHED PIECE.
A HAND-CAST GLASS FLAMBEAU,
WITH SILVER 'FRUIT SWAG'
MOUNTS, 'ACANTHUS LEAF'
COLUMN, LAPIS LAZULI KNOP AND
FLUTE, AND 'LEAFED' SILVER
BASE. 30" HIGH



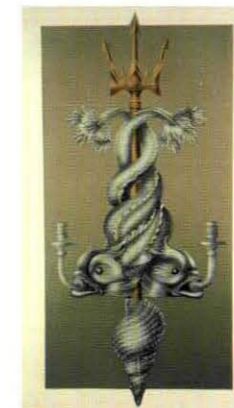
**'SNAIL & VINE LEAF'
WINE TASTER**

MADE IN SILVER, PARCEL-GILT



WALL SCONCE

THE WORSHIPFUL COMPANY OF FISHMONGERS
ONE OF A PAIR OF SILVER PARCEL-
GILT WALL SCONCES WITH
'DOLPHINS', 'TRIDENT' AND A
'TRITON SHELL', 1995,
AND DRAWING



WALL SCONCE

PRIVATE COLLECTION
ONE OF A PAIR OF SILVER-GILT
SCONCES, WITH MODERN 'GARDEN'
MOTIFS REFLECTING THE INTERESTS
OF THE OWNER FOR WHOM IT WAS
COMMISSIONED, 1994



Living Silver



VASE
AVAILABLE IN TWO SIZES, GLASS
VASES WITH SILVER PARCEL-GILT
MOUNTS, DECORATED 'SNAIL AND
VINE LEAF' MOTIFS. 5" AND 8"



**'VEGETABLE' NAPKIN
RINGS**
MADE IN SILVER AND AVAILABLE
IN THREE DESIGNS, WITH 'SWEET
CORN', 'BABY CARROTS' OR
'CELERY'

LADLES
MADE IN SILVER AND AVAILABLE
WITH ONE OF THREE FINIALS,
'OWL', 'SHELL', OR 'BEE'



Living Silver



SALT & PEPPER MILLS
MADE IN SILVER WITH 'GLOBE
ARTICHOKE' AND 'BABY
CAULIFLOWER' TOPS

'BUMBLE BEE' QUAICH
MADE IN SILVER, PARCEL-GILT
WITH 'GRAPES AND VINE
LEAF' HANDLES



CANDELABRUM
MADE IN SILVER, A FOUR-LIGHT
TORCHERE WITH GIMBAL CANDLE
HOLDERS, AN OXIDISED CENTRAL
COLUMN, AND SILVER-GILT
'LEAVES AND RIBBONS'. 18" HIGH



Living Silver



BOTTLE STOPPERS
MADE IN SILVER AND AVAILABLE
IN THREE DESIGNS, WITH
'PINEAPPLE', 'PINE-CONE'
OR 'POMEGRANATE'



'CABBAGE' GOBLET
MADE IN SILVER, PARCEL-GILT

Living Silver

'SHELL' SALT

MADE IN SILVER, PARCEL-GILT
WITH SPOON

'VEGETABLE' BOXES

MADE IN SILVER AND AVAILABLE
IN THREE SIZES, LIDS DECORATED
WITH 'MIXED FRUITS', 'SPRING
ONIONS', 'CHILLI PEPPERS',
'PARSLEY', 'BROAD BEANS', 'STAR
ANISE' AND 'PEA-PODS'



**'DOLPHIN' PLACE CARD
& TOOTHPICK HOLDER**
MADE IN SILVER, 3" HIGH