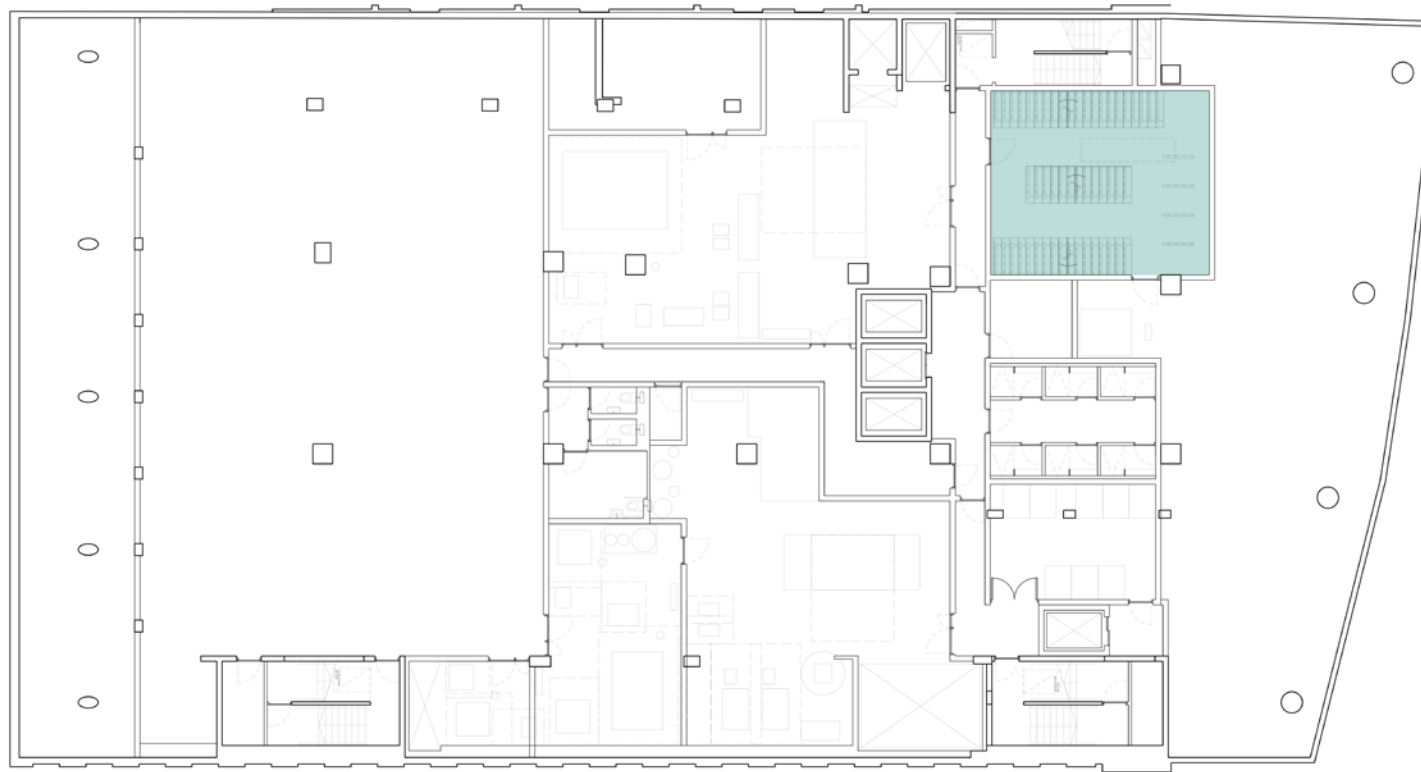


Jamestown Road: Planning Condition 9





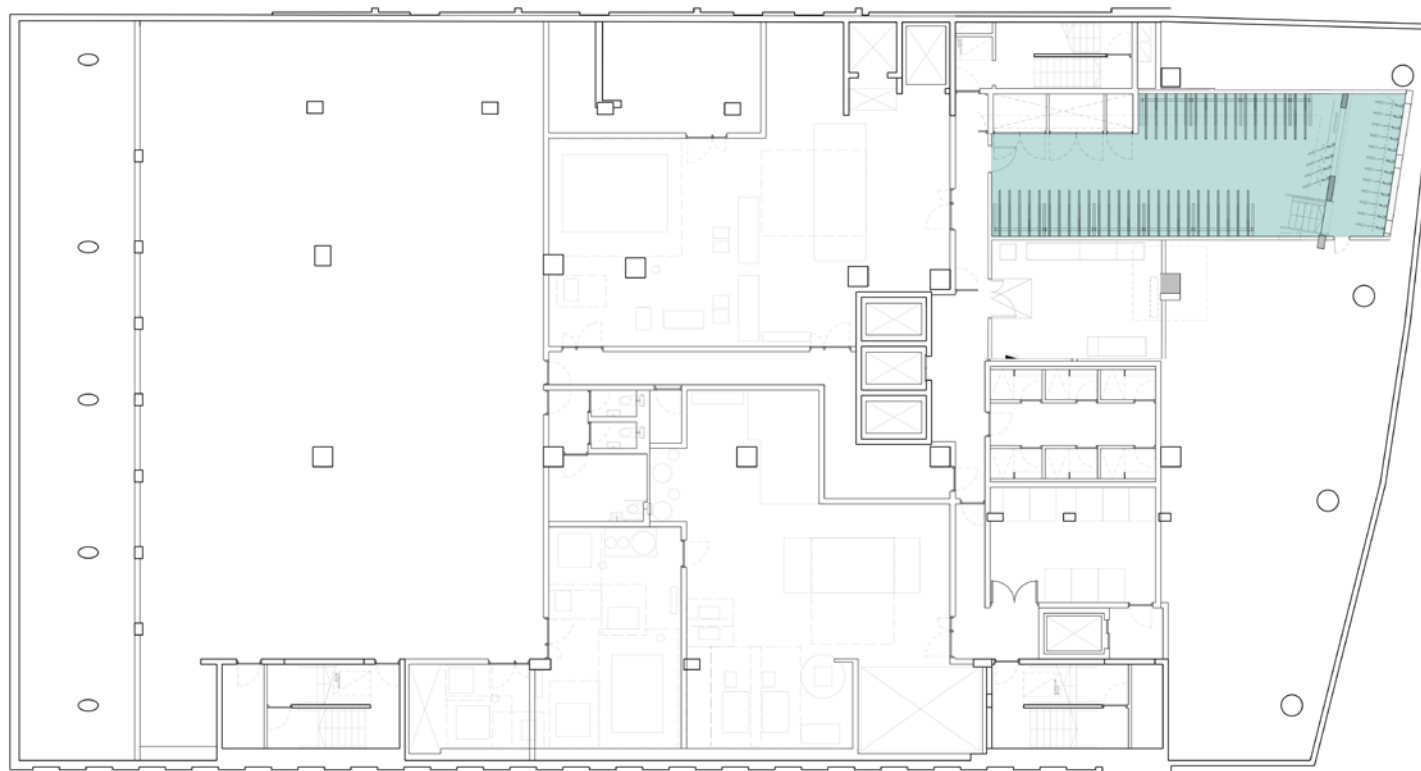
01. Lower Ground Plan from Design and Access Statement


Planning Condition 9

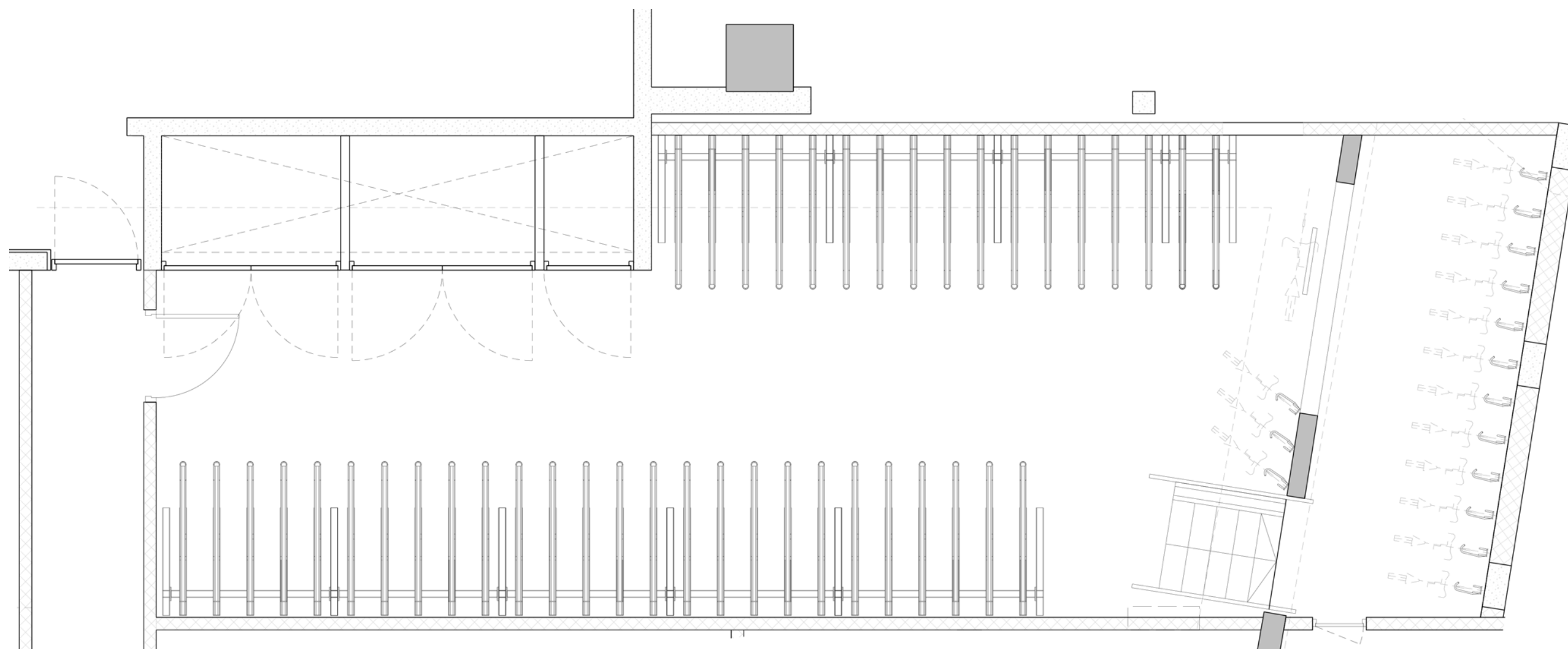
This submission concerns the proposed cycle parking at 32 Jamestown Road

Due to site circumstances involved with working around existing building the layout of the cycle store has had to change slightly since the planning permission was granted. The original and revised position is shown adjacent.

- There has been no change to access
- There has been no change to provision

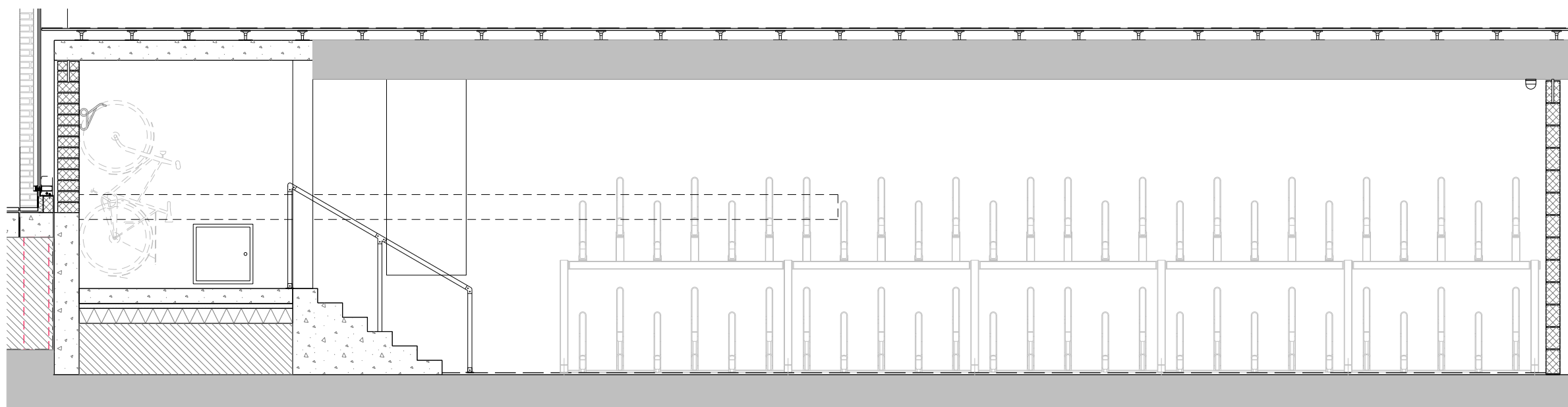


 Office cycle storage: 102 spaces



The detailed plan shows the cycle store and the cycle spaces.

- 86 two tier storage spaces
- 15 wall mounted spaces
- 1 sheffield stand with clear space for recumbent/ arm powered bike



01. Cycle Store Elevation 1:50



02. Specified two tier racks



03. Specified wall mounted racks