

**KEY**



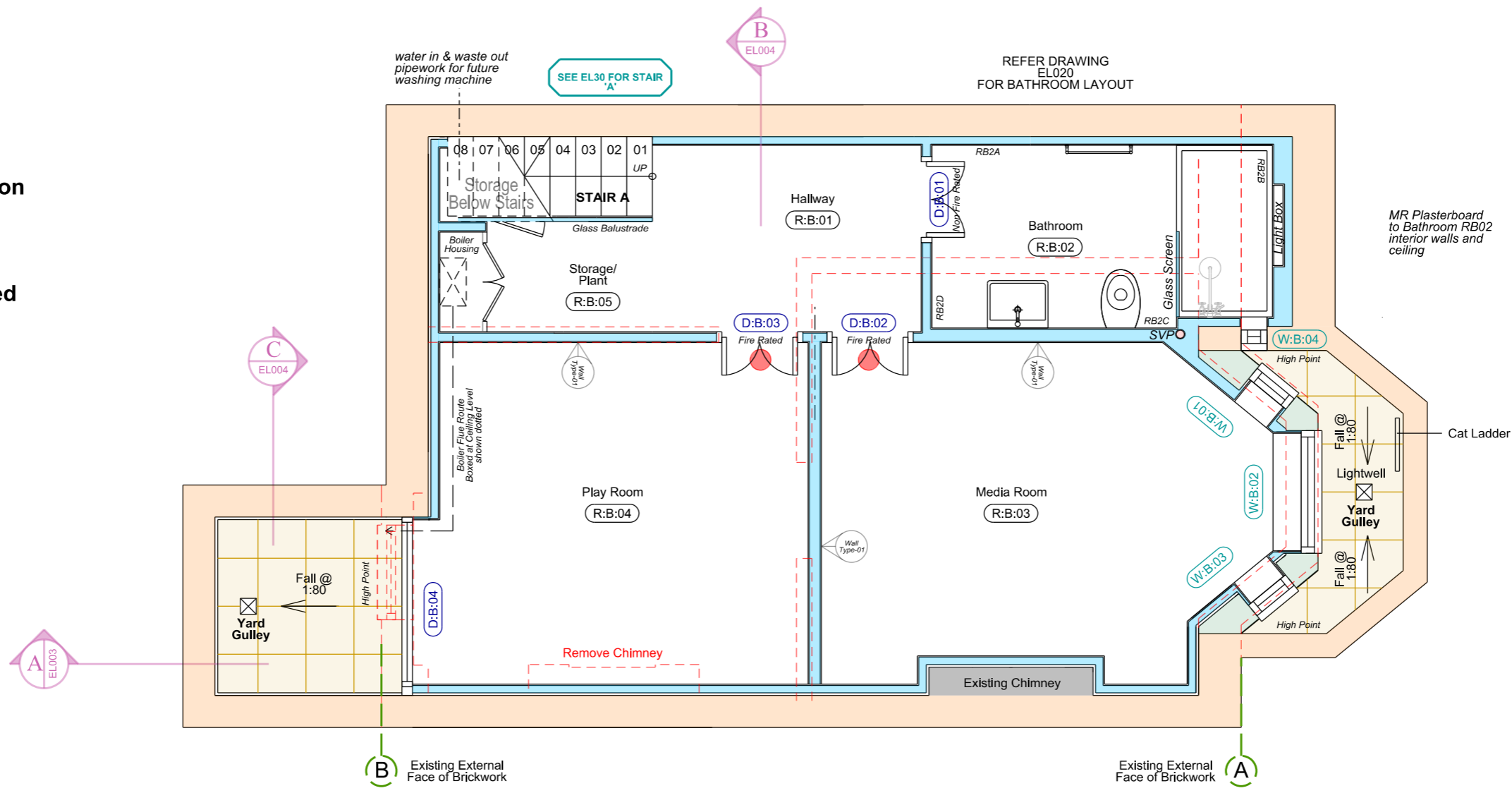
**Existing**



**New Partition**



**Demolished**



**Note**

1. To Bathroom Walls 'RB2A' Denotes Wall Ref and Should Be Read With Schedule of Works

This drawing is copyright Shape Architecture Ltd. The Contractor must not scale from the drawing. All dimensions to be taken from dimension strings. Where any discrepancies are found between dimensions these must be brought to the attention of the Architects for resolution. Where discrepancies exist between reference or assembly drawings and detail drawings the latter take preference.

**SHAPE Architecture**  
WWW.SHAPEARCHITECTURE.CO.UK

Flat 1, 154 Iverson Road  
**NW6 2HH**  
PROJECT

1:50 @ A3 June 2016  
SCALE DATE

**FOR TENDER**

Proposed Basement Plan  
DRAWING

1226 EL001 -  
DWG. NO. REVISION CHECKED

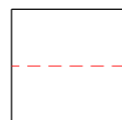
**KEY**



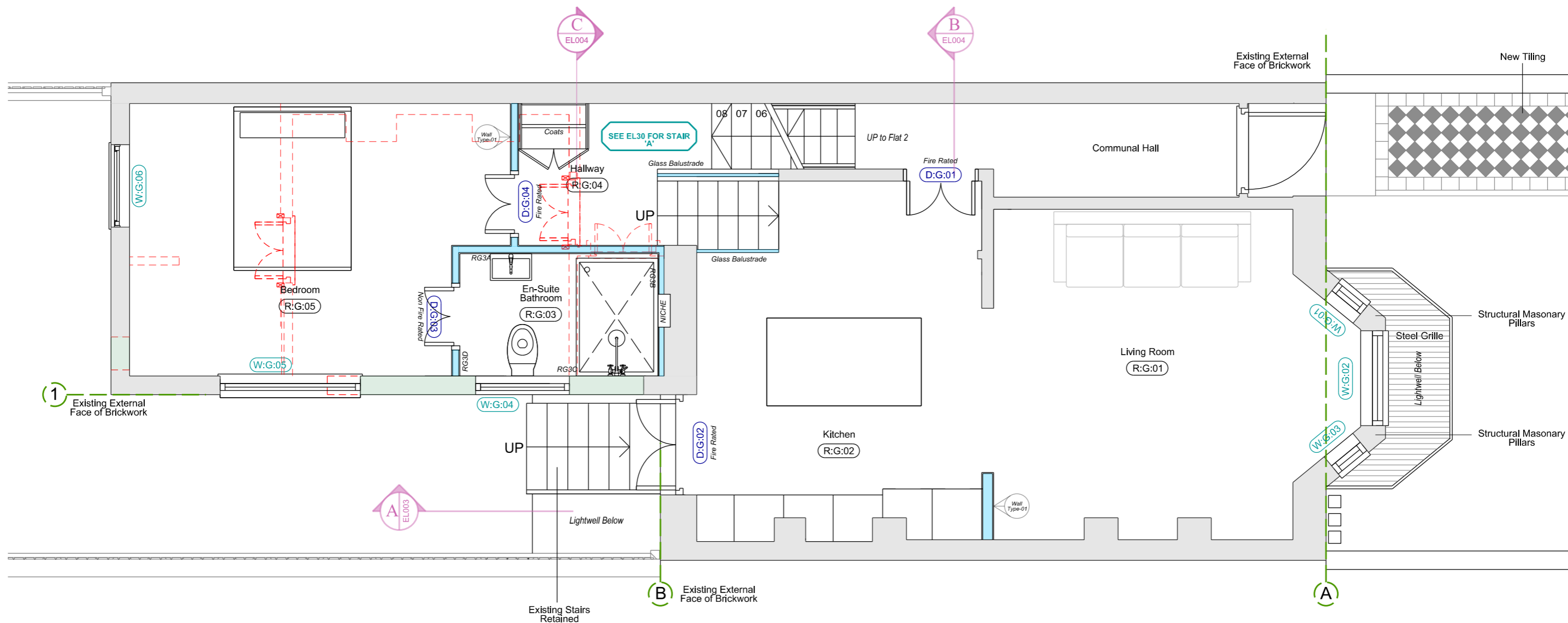
Existing



New Partition



Demolished



**Note**

1. To Bathroom Walls 'RG3A' Denotes Wall Ref and Should Be Read With Schedule of Works

This drawing is copyright Shape Architecture Ltd. The Contractor must not scale from the drawing. All dimensions to be taken from dimension strings. Where any discrepancies are found between dimensions these must be brought to the attention of the Architects for resolution. Where discrepancies exist between reference or assembly drawings and detail drawings the latter take preference.

**SHAPE Architecture**  
WWW.SHAPEARCHITECTURE.CO.UK

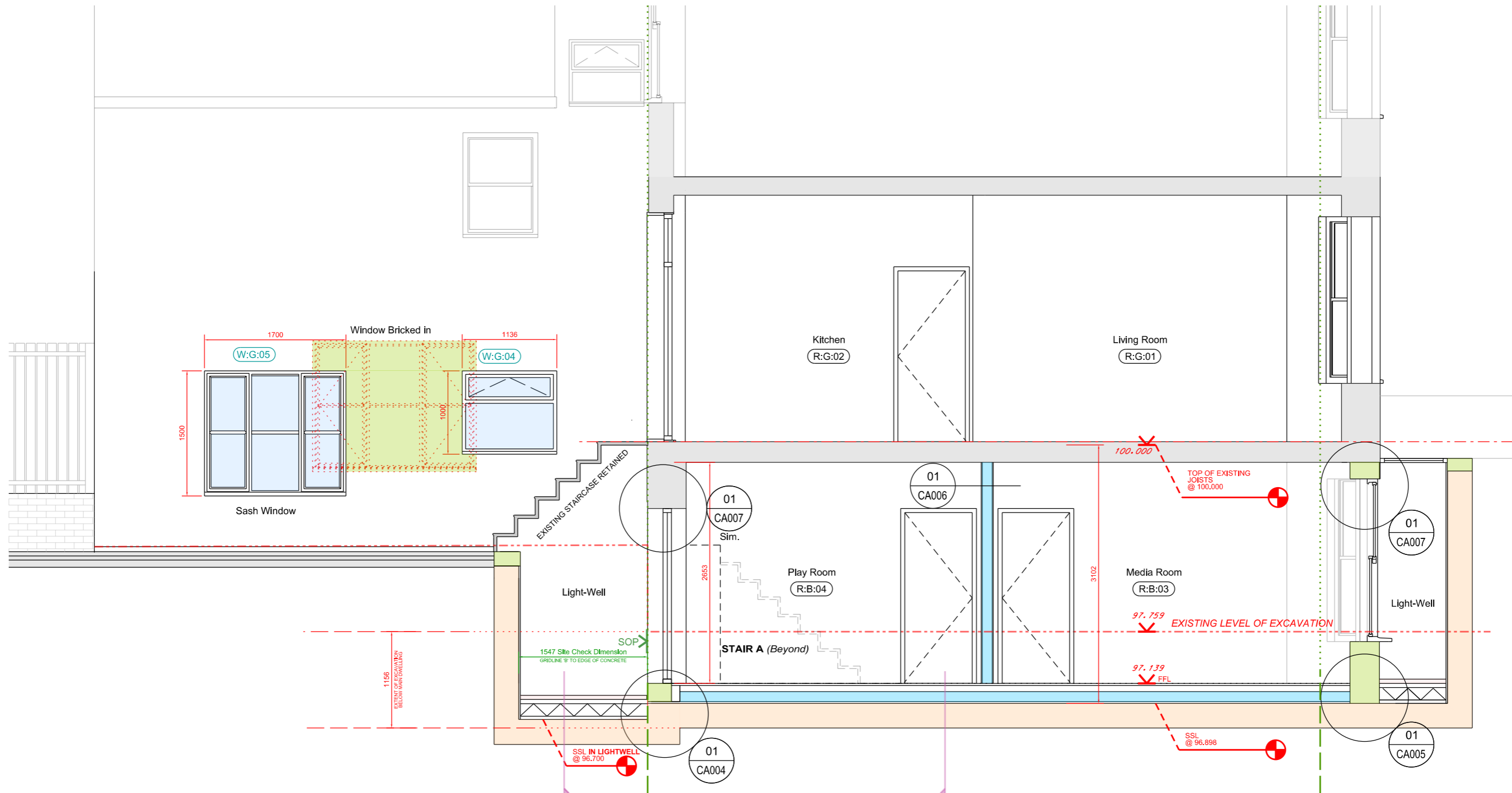
Flat 1, 154 Iverson Road  
**NW6 2HH**  
PROJECT

1:50 @ A3 June 2016  
SCALE DATE

**FOR TENDER**

Proposed Ground Floor  
DRAWING

1226 EL002 -  
DWG. NO. REVISION CHECKED



This drawing is copyright Shape Architecture Ltd. The Contractor must not scale from the drawing. All dimensions to be taken from dimension strings. Where any discrepancies are found between dimensions these must be brought to the attention of the Architects for resolution. Where discrepancies exist between reference or assembly drawings and detail drawings the latter take preference.

**SHAPE Architecture**  
WWW.SHAPEARCHITECTURE.CO.UK

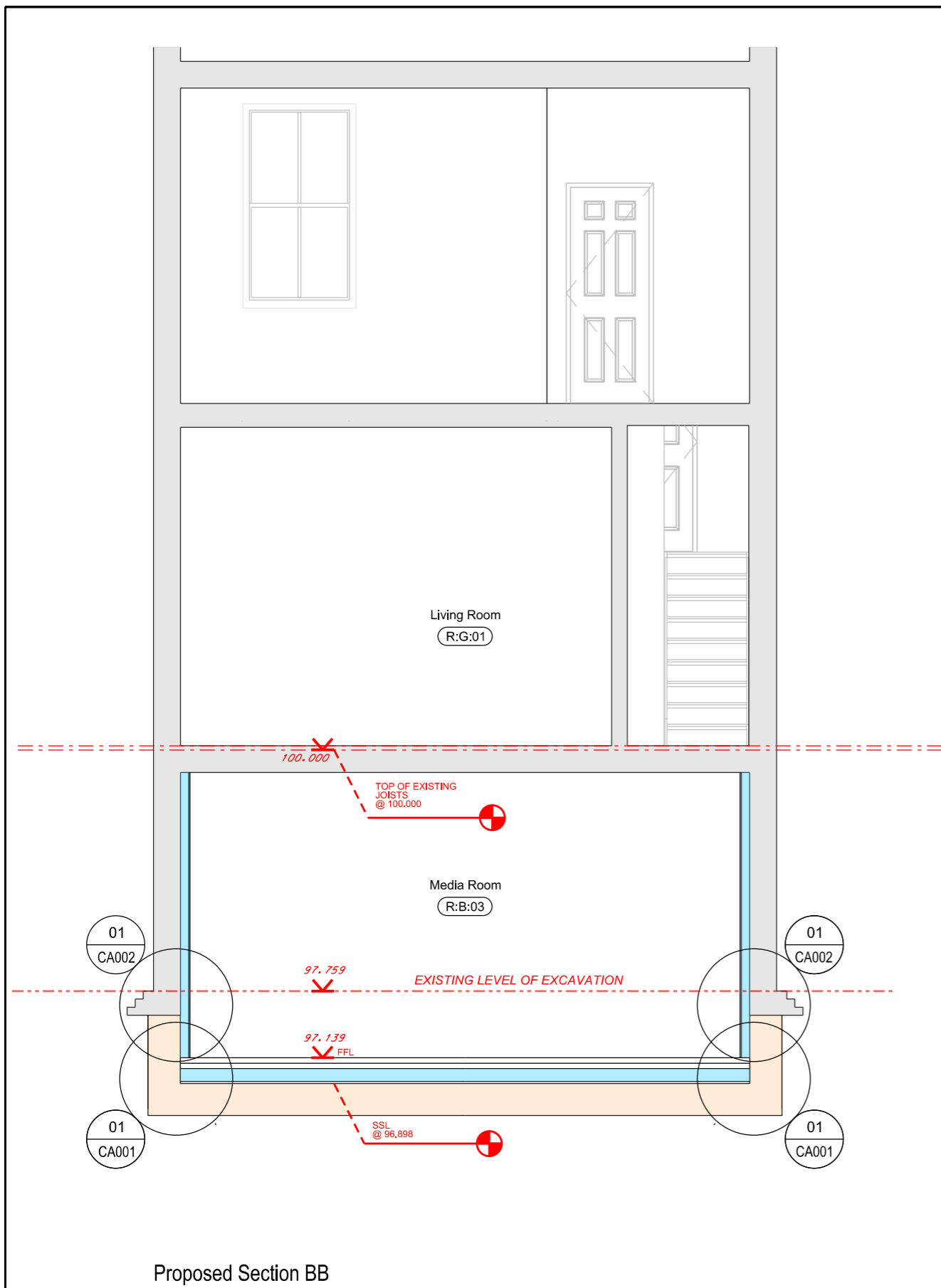
Flat 1, 154 Iverson Road  
**NW6 2HH**  
PROJECT

1:50 @ A3 June 2016  
SCALE DATE

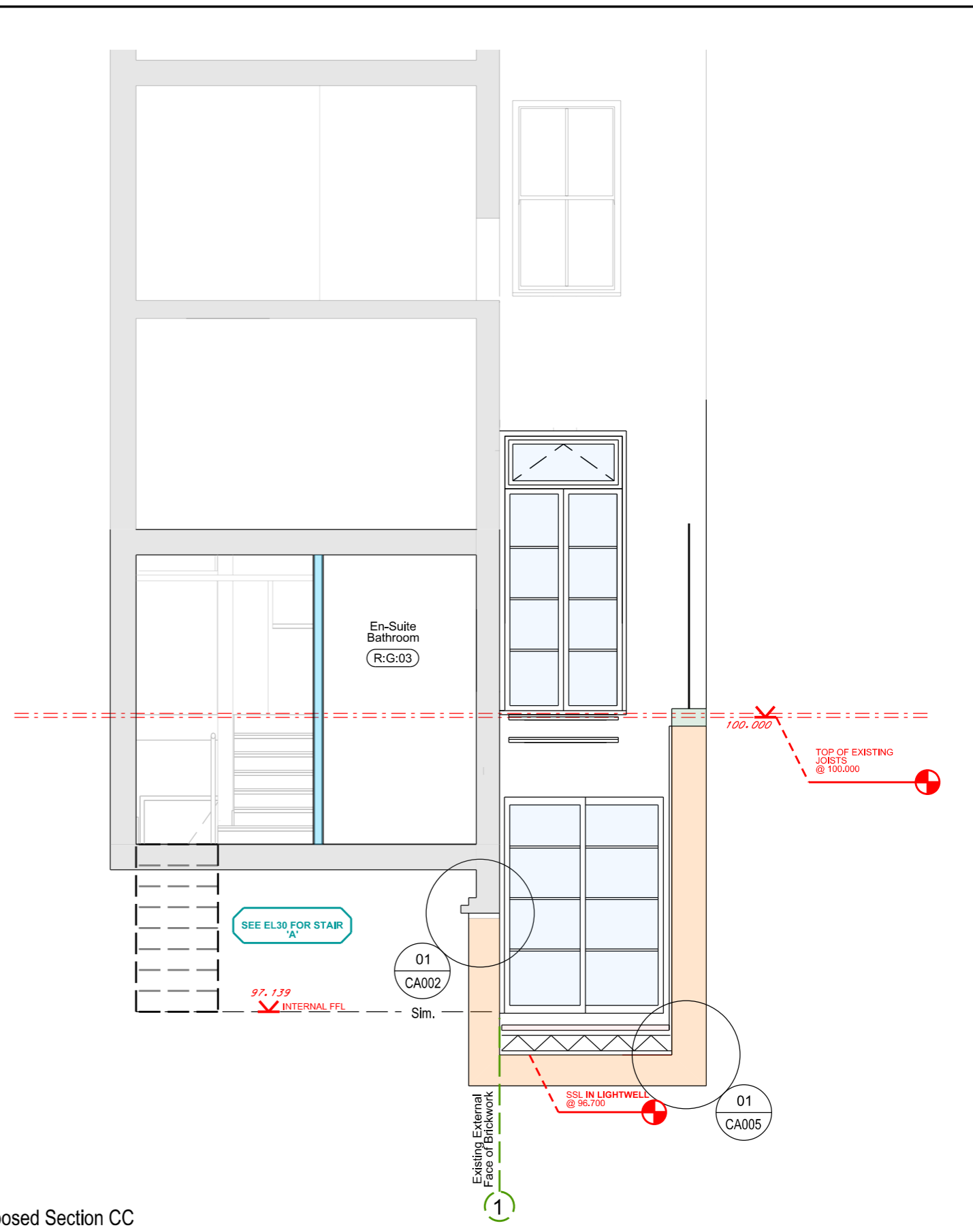
**FOR TENDER**

Proposed Section AA  
DRAWING

1226 EL003 -  
DWG. NO. REVISION CHECKED



Proposed Section BB



Proposed Section CC

This drawing is copyright Shape Architecture Ltd. The Contractor must not scale from the drawing. All dimensions to be taken from dimension strings. Where any discrepancies are found between dimensions these must be brought to the attention of the Architects for resolution. Where discrepancies exist between reference or assembly drawings and detail drawings the latter take preference.

**SHAPE** Architecture  
WWW.SHAPEARCHITECTURE.CO.UK

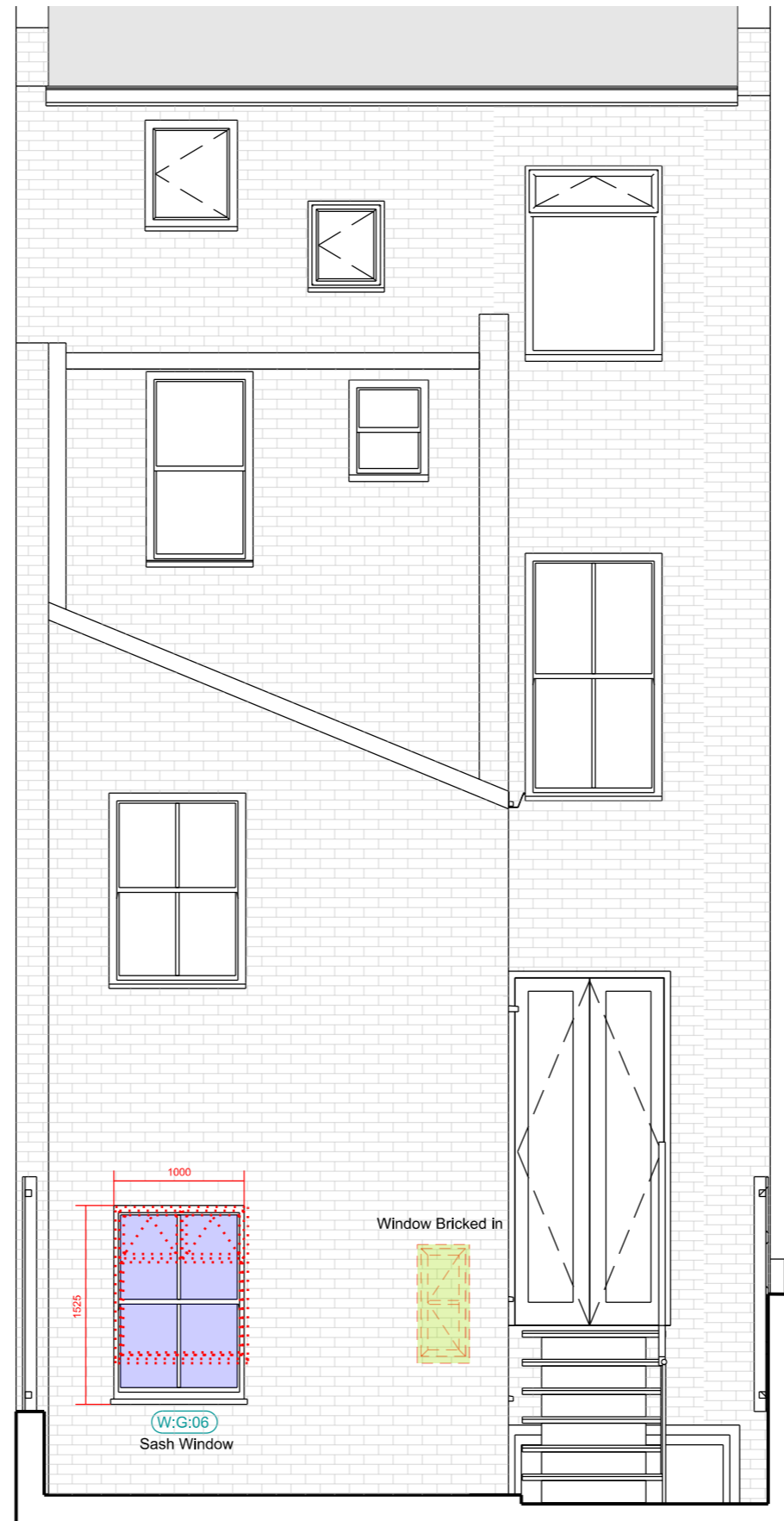
Flat 1, 154 Iverson Road  
NW6 2HH  
PROJECT

1:50 @ A3 June 2016  
SCALE DATE

**FOR TENDER**

Proposed Section BB & CC  
DRAWING

1226 EL004 -  
DWG. NO. REVISION CHECKED



This drawing is copyright Shape Architecture Ltd. The Contractor must not scale from the drawing. All dimensions to be taken from dimension strings. Where any discrepancies are found between dimensions these must be brought to the attention of the Architects for resolution. Where discrepancies exist between reference or assembly drawings and detail drawings the latter take preference.

**SHAPE** Architecture  
WWW.SHAPEARCHITECTURE.CO.UK

Flat 1, 154 Iverson Road  
**NW6 2HH**  
PROJECT

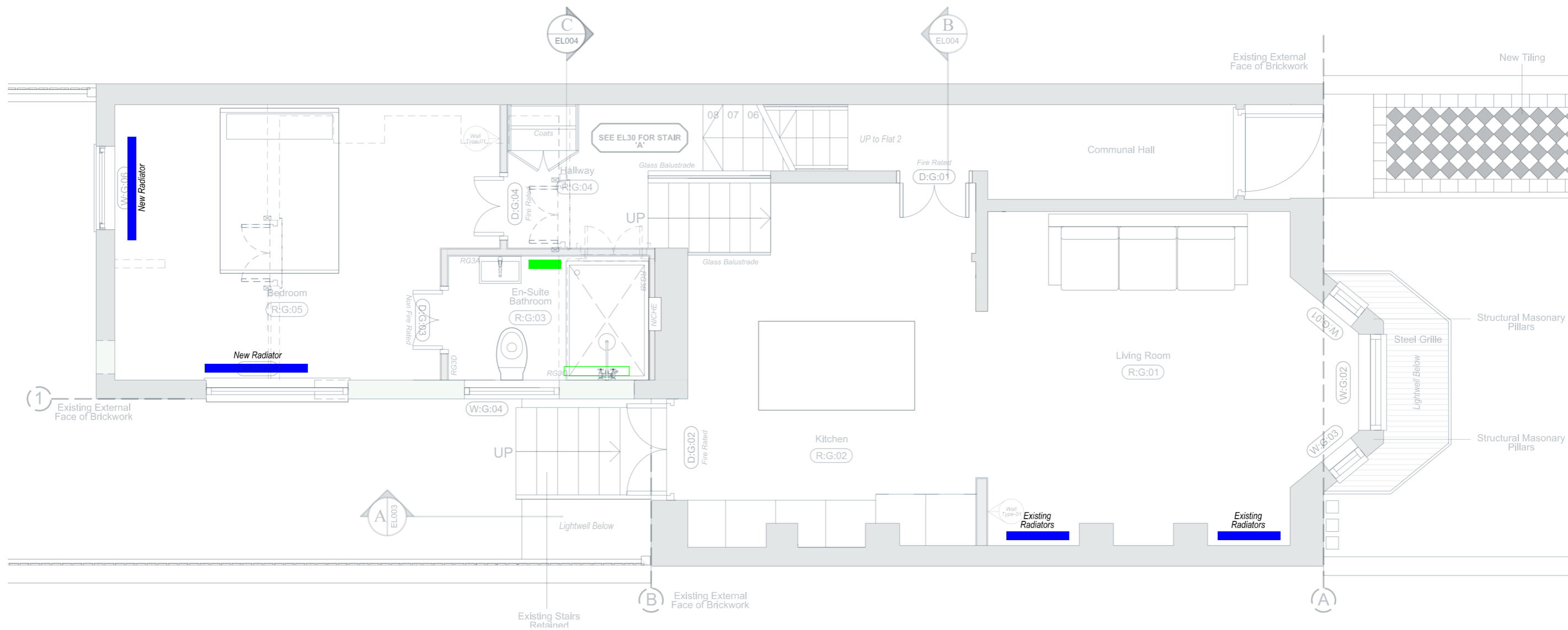
1:50 @ A3 June 2016  
SCALE DATE

**FOR TENDER**

Proposed Rear Elevation  
DRAWING

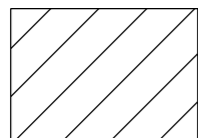
1226 EL005  
DWG. NO. REVISION CHECKED



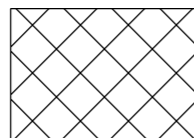


### KEY TO SYMBOLS

#### HEATING SCHEMATIC



Underfloor Heating  
Water Based in screed



Underfloor Heating  
Electric



Radiator



Heated  
Towel  
Rail

NOTE:  
RADIATORS  
Spec Ref. -

This drawing is copyright Shape Architecture Ltd. The Contractor must not scale from the drawing. All dimensions to be taken from dimension strings. Where any discrepancies are found between dimensions these must be brought to the attention of the Architects for resolution. Where discrepancies exist between reference or assembly drawings and detail drawings the latter take preference.

**SHAPE** Architecture  
WWW.SHAPEARCHITECTURE.CO.UK

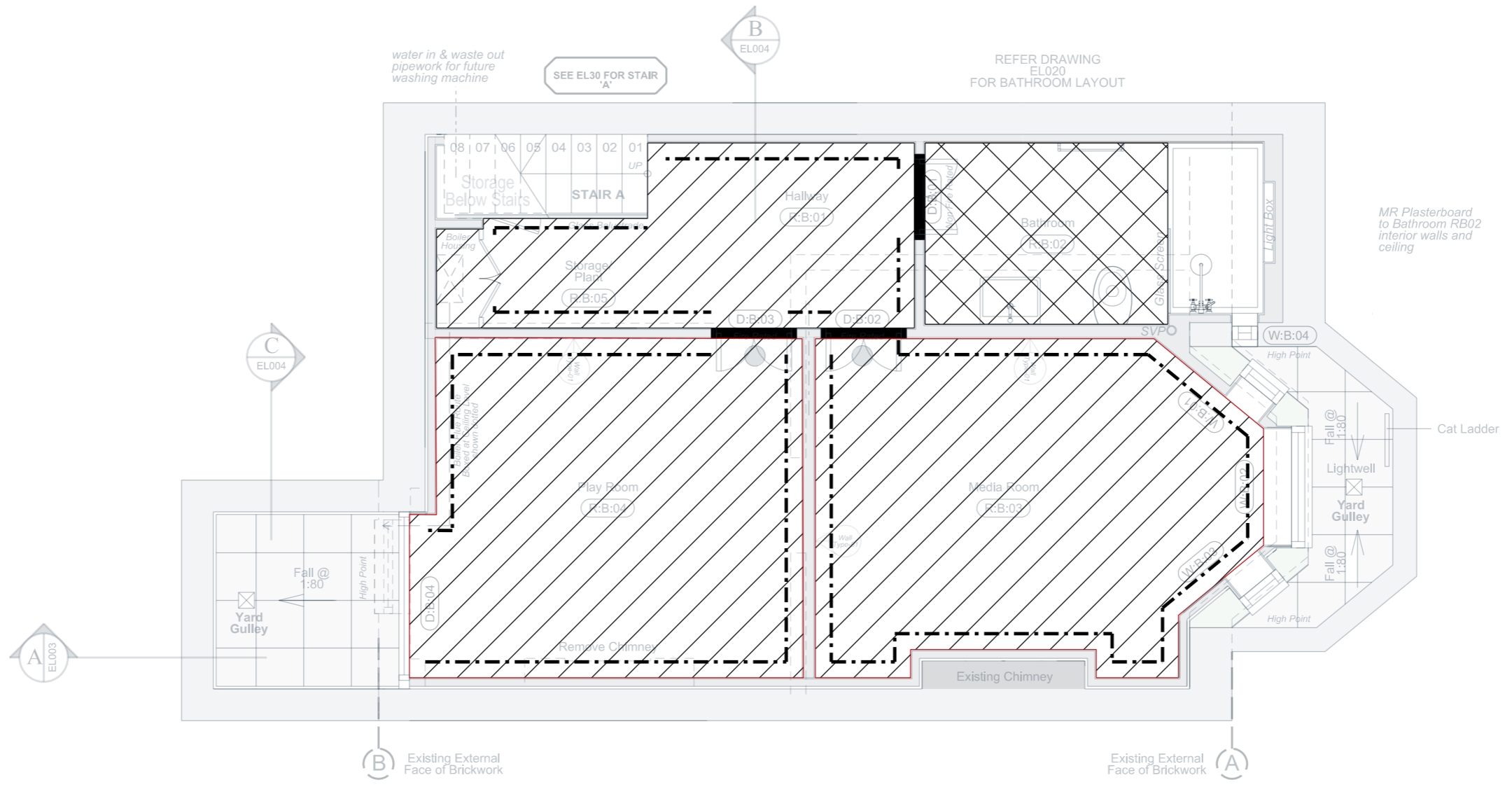
Flat 1, 154 Iverson Road  
**NW6 2HH**  
PROJECT

1:50 @ A3 June 2016  
SCALE DATE

**FOR TENDER**

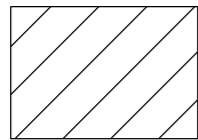
Ground Floor Heating Schematic  
DRAWING

1226 EL012 -  
DWG. NO. REVISION CHECKED

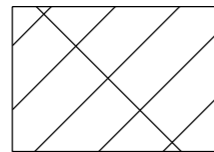


**KEY TO SYMBOLS**

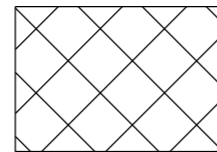
**FLOORING SCHEMATIC**



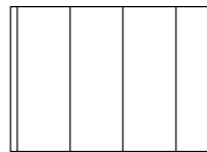
Engineered Timber Oak Floating Flooring (Not Glued To Substrate)



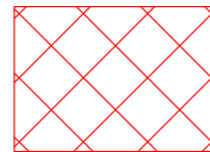
Engineered Oak Plank Flooring



Ceramic Tiling

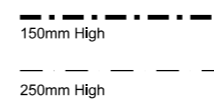


Vinyl Flooring



Carpet

**SKIRTING**



**THRESHOLD**



This drawing is copyright Shape Architecture Ltd. The Contractor must not scale from the drawing. All dimensions to be taken from dimension strings. Where any discrepancies are found between dimensions these must be brought to the attention of the Architects for resolution. Where discrepancies exist between reference or assembly drawings and detail drawings the latter take preference.

-	-	-

**SHAPE Architecture**  
WWW.SHAPEARCHITECTURE.CO.UK

**FOR TENDER**

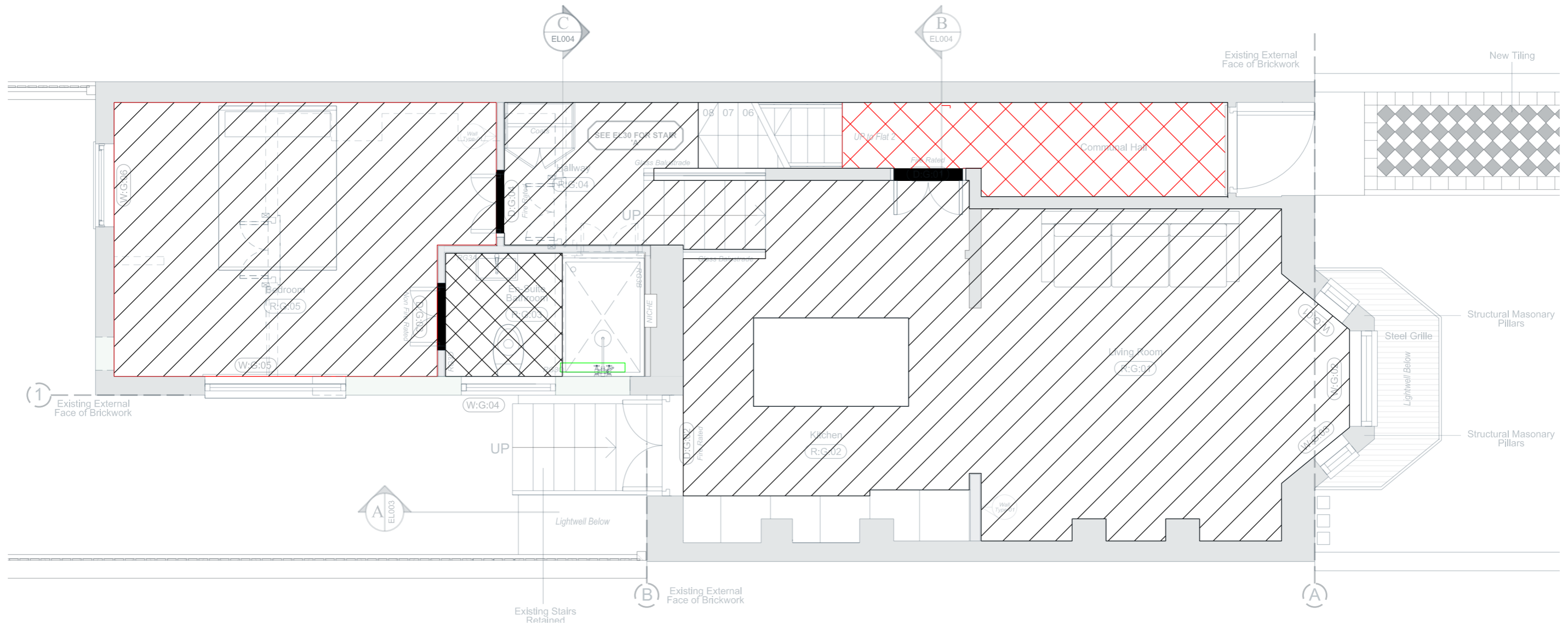
Flat 1, 154 Iverson Road  
**NW6 2HH**  
PROJECT

Basement Flooring Schematic  
DRAWING

1:50 @ A3 June 2016  
SCALE DATE

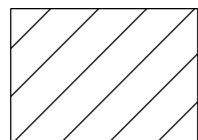
1226 EL013 -  
DWG. NO. REVISION CHECKED



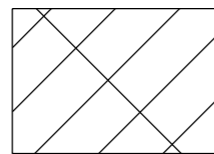


### KEY TO SYMBOLS

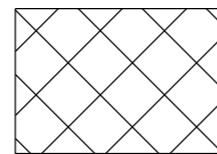
#### FLOORING SCHEMATIC



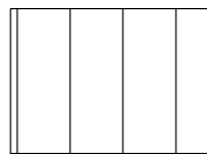
Engineered Timber Oak Floating Flooring (Not Glued To Substrate)



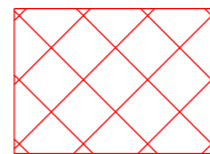
Engineered Oak Plank Flooring



Ceramic Tiling

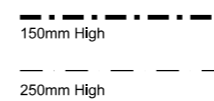


Vinyl Flooring



Carpet

#### SKIRTING



#### THRESHOLD



This drawing is copyright Shape Architecture Ltd. The Contractor must not scale from the drawing. All dimensions to be taken from dimension strings. Where any discrepancies are found between dimensions these must be brought to the attention of the Architects for resolution. Where discrepancies exist between reference or assembly drawings and detail drawings the latter take preference.

**SHAPE** Architecture  
WWW.SHAPEARCHITECTURE.CO.UK

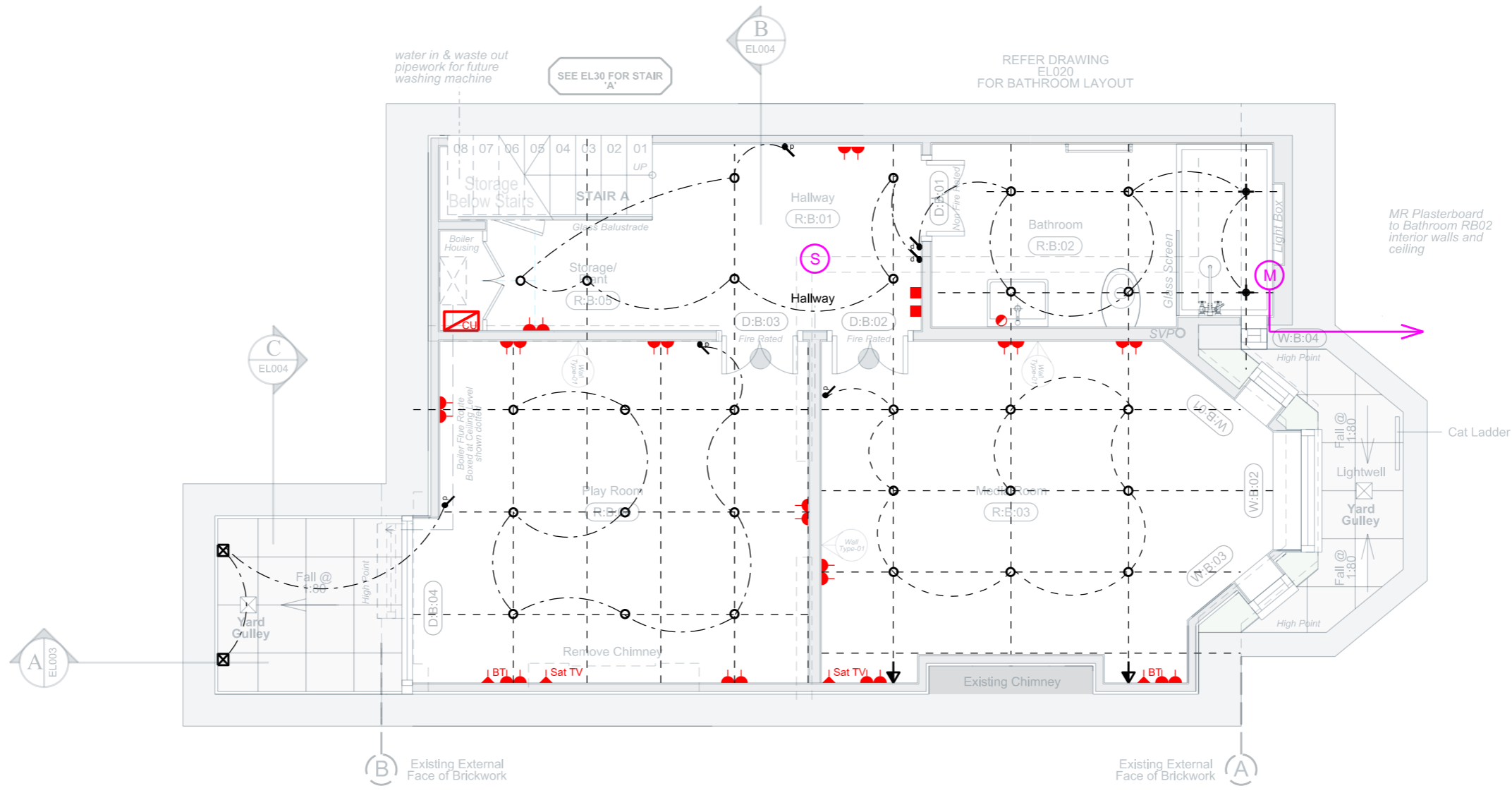
**FOR TENDER**

Flat 1, 154 Iverson Road  
**NW6 2HH**  
PROJECT

Ground Floor Flooring Schematic  
DRAWING

1:50 @ A3 June 2016  
SCALE DATE

1226 EL014 -  
DWG. NO. REVISION CHECKED



**KEY TO SYMBOLS**

- |  |   |   |   |   |  |   |  |
|--|---|---|---|---|--|---|--|
| <ul style="list-style-type: none"> <li>⊕ 1w 350mA LED Recessed Downlight</li> <li>⊕ LED Shower Downlight</li> <li>○ LED Downlight w/ direction if applicable</li> <li>ON/OFF Switch</li> <li>Dimmer Switch</li> <li>— 11w 230v Fluorescent Tube</li> </ul> | <ul style="list-style-type: none"> <li>External Hanging Lantern</li> <li>Floor Washer</li> <li>Bedside Reading Light</li> <li>Mini Starlight</li> <li>Wall Light</li> <li>LED Tape Light</li> </ul> | <ul style="list-style-type: none"> <li>LED Fibre Optic Starry Sky</li> <li>Pendant Light</li> <li>Wall Light</li> <li>Table Lamp</li> <li>Fully Recessed Step Up Light</li> <li>40w 230v Bulkhead Wall Light</li> </ul> | <ul style="list-style-type: none"> <li>20w 12v Wall Spot Light</li> <li>LED Double Trim</li> <li>LED Spanning Highwire System</li> <li>Master Unit</li> <li>2x20w 12v Plaster Square</li> <li>CPBD Light</li> </ul> | <ul style="list-style-type: none"> <li>Carbon Monoxide Detector</li> <li>13 Amp Recessed Double Socket</li> <li>Extng Retained 13 Amp Recessed Double Socket New Faceplate</li> <li>Above Counter Top</li> <li>13 Amp Recessed Single Socket</li> <li>5 Amp Recessed Single Socket</li> </ul> | <ul style="list-style-type: none"> <li>Mechanical Extract Vent (Moisture Sensitive where noted)</li> <li>Sky Television Point</li> <li>Telephone Point</li> <li>Data Point for Cat5e cabling</li> <li>Video Entry Handset</li> <li>Television Point</li> </ul> | <ul style="list-style-type: none"> <li>Smoke Detector, Mains Operated with Battery Backup</li> <li>Consumer Unit</li> <li>Video Entry Unit</li> <li>Shaver Socket</li> <li>Isolator Switch</li> </ul> | <ul style="list-style-type: none"> <li>Security Sensor by Banham</li> <li>Security Door Contact by Banham</li> <li>Switch For Rooflight</li> <li>InterCom</li> </ul> |
|--|---|---|---|---|--|---|--|

This drawing is copyright Shape Architecture Ltd. The Contractor must not scale from the drawing. All dimensions to be taken from dimension strings. Where any discrepancies are found between dimensions these must be brought to the attention of the Architects for resolution. Where discrepancies exist between reference or assembly drawings and detail drawings the latter take preference.

**SHAPE Architecture**  
WWW.SHAPEARCHITECTURE.CO.UK

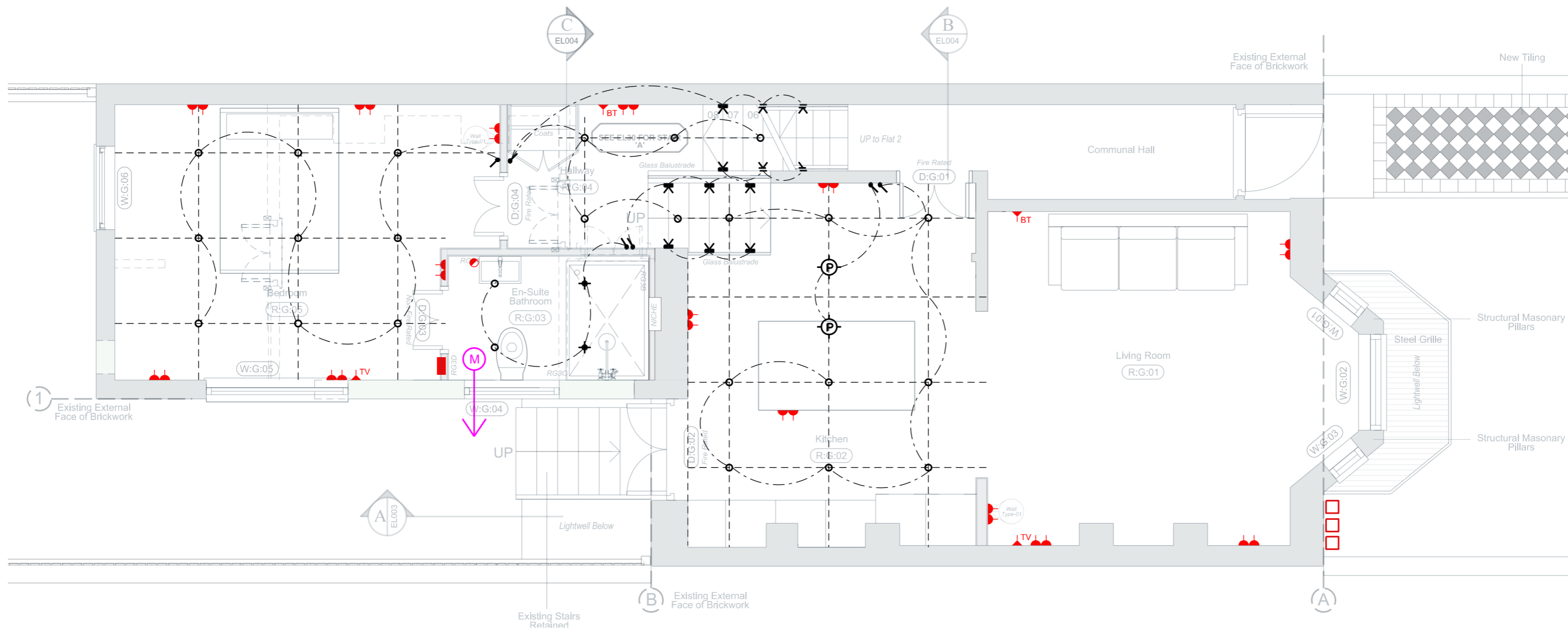
Flat 1, 154 Iverson Road  
**NW6 2HH**  
PROJECT

1:50 @ A3 June 2016  
SCALE DATE

**FOR TENDER**

Proposed Basement Electrical Plan  
DRAWING

1226 EL015 -  
DWG. NO. REVISION CHECKED



### New Electrical Lighting Proposed For Ground Floor

#### KEY TO SYMBOLS

- |  |   |  |   |  |  |   |  |
|--|---|--|---|--|--|---|--|
| <ul style="list-style-type: none"> <li>⊕ 1w 350mA LED Recessed Downlight</li> <li>⊕ LED Shower Downlight</li> <li>○ LED Downlight w/ direction if applicable</li> <li>⚡ ON/OFF Switch</li> <li>⚡ Dimmer Switch</li> <li>— 11w 230v Fluorescent Tube</li> </ul> | <ul style="list-style-type: none"> <li>⊕ External Hanging Lantern</li> <li>⚡ Floor Washer</li> <li>⌒ Bedside Reading Light</li> <li>* Mini Starlight</li> <li>⚡ Wall Light</li> <li>— LED Tape Light</li> </ul> | <ul style="list-style-type: none"> <li>⊗ LED Fibre Optic Starry Sky</li> <li>⊕ Pedant Light</li> <li>⊗ Wall Light</li> <li>⊕ Table Lamp</li> <li>⊙ Fully Recessed Step Up Light</li> <li>⊗ 40w 230v Bulkhead Wall Light</li> </ul> | <ul style="list-style-type: none"> <li>⊕ 20w 12v Wall Spot Light</li> <li>∞ LED Double Trim</li> <li>— LED Spanning Highwire System</li> <li>⊕ Master Unit</li> <li>⊕ 2x20w 12v Plaster Square</li> <li>⊕ CPBD Light</li> </ul> | <ul style="list-style-type: none"> <li>⊕ Carbon Monoxide Detector</li> <li>⚡ 13 Amp Recessed Double Socket</li> <li>⚡ Exting Retained 13 Amp Recessed Double Socket New Faceplate</li> <li>⚡ Above Counter Top</li> <li>⚡ 13 Amp Recessed Single Socket</li> <li>⚡ 5 Amp Recessed Single Socket</li> </ul> | <ul style="list-style-type: none"> <li>⊕ Mechanical Extract Vent (Moisture Sensitive where noted)</li> <li>⚡ Sat TV Sky Television Point</li> <li>⚡ BT Telephone Point</li> <li>⚡ Dat Data Point for Cat5e cabling</li> <li>⚡ VE Video Entry Handset</li> <li>⚡ TV Television Point</li> </ul> | <ul style="list-style-type: none"> <li>⊕ Smoke Detector, Mains Operated with Battery Backup</li> <li>⊕ Consumer Unit</li> <li>⊕ Vid E Video Entry Unit</li> <li>⊕ Shaver Socket</li> <li>⊕ Isolator Switch</li> </ul> | <ul style="list-style-type: none"> <li>⊕ Security Sensor by Banham</li> <li>⊕ Security Door Contact by Banham</li> <li>⚡ (R) Switch For Rooflight</li> <li>⊕ I/C InterCom</li> </ul> |
|--|---|--|---|--|--|---|--|

This drawing is copyright Shape Architecture Ltd. The Contractor must not scale from the drawing. All dimensions to be taken from dimension strings. Where any discrepancies are found between dimensions these must be brought to the attention of the Architects for resolution. Where discrepancies exist between reference or assembly drawings and detail drawings the latter take preference.

**SHAPE Architecture**  
WWW.SHAPEARCHITECTURE.CO.UK

Flat 1, 154 Iverson Road  
**NW6 2HH**  
PROJECT

1:50 @ A3 June 2016  
SCALE DATE

**FOR TENDER**

Proposed Electrical  
Drawing Ground Floor  
DRAWING

1226 EL016 -  
DWG. NO. REVISION CHECKED