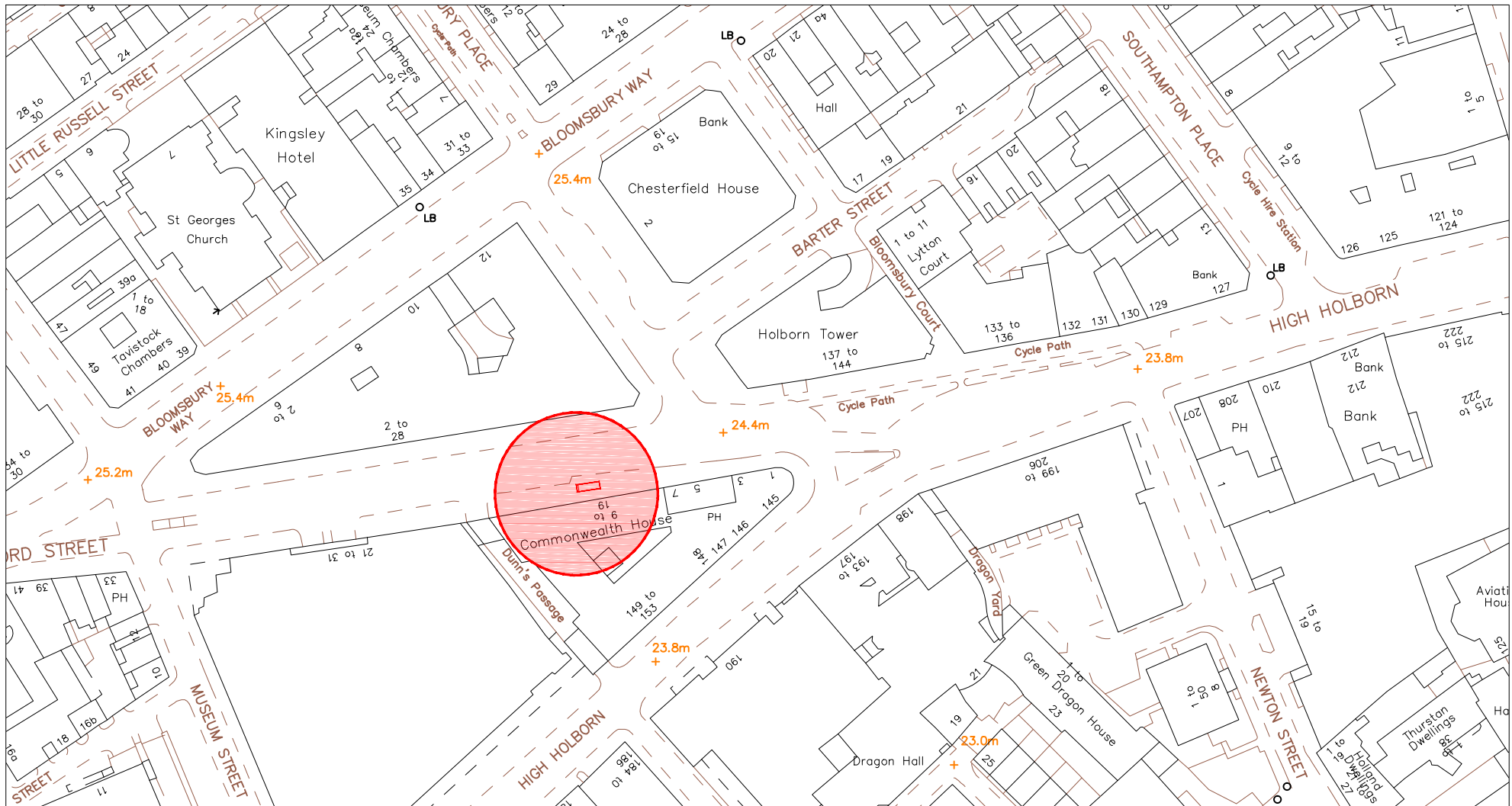
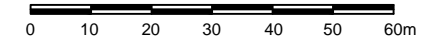


# SITE ADDRESS

New Oxford Street, London, WC1V 6PJ  
Junction with Dunns Passage - 20m Before  
Furniture Index: CAM00105AB  
Easting/Northing: 530293/181478

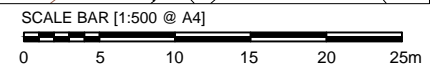
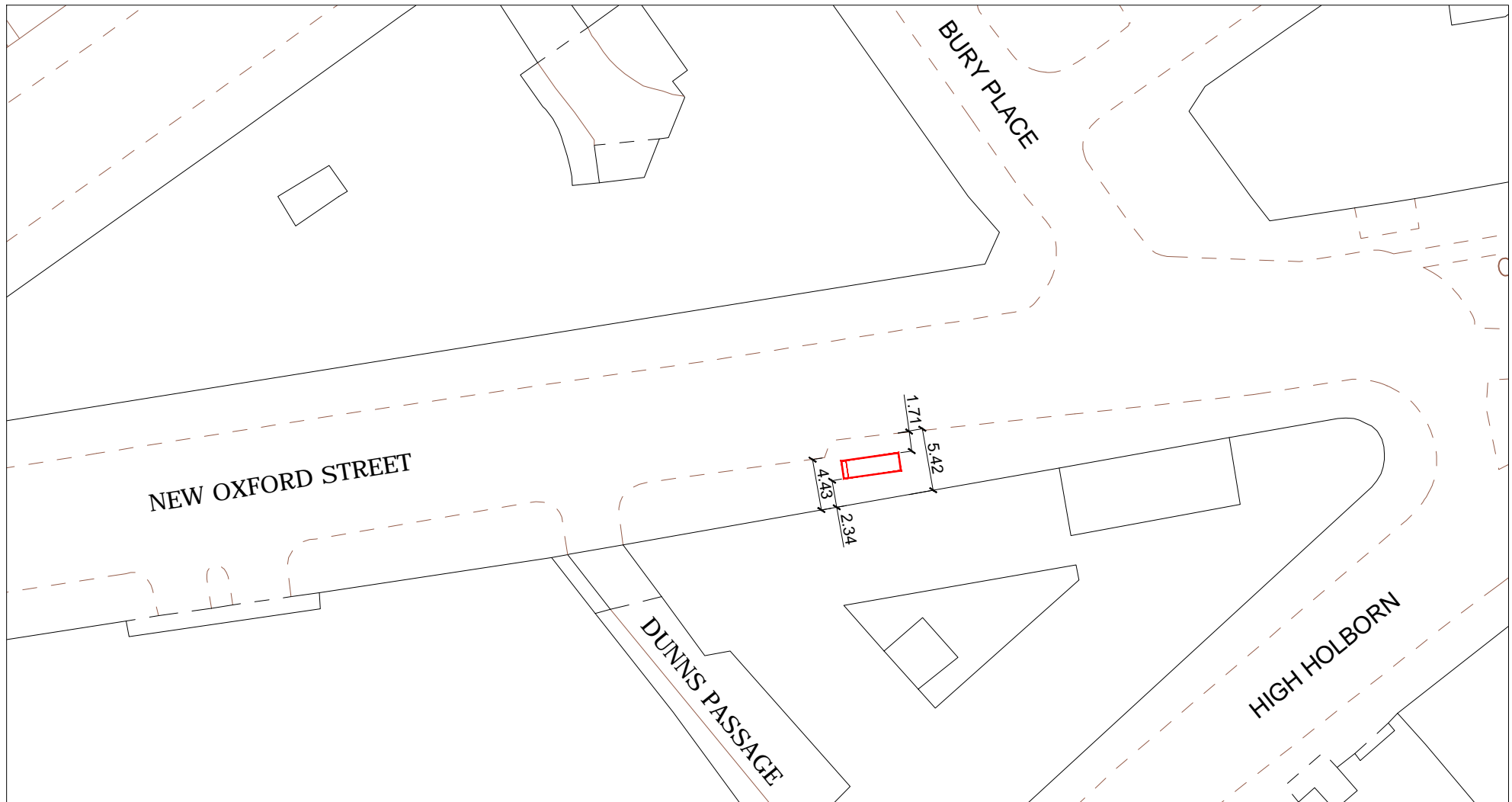


SCALE BAR [1:1250 @ A4]



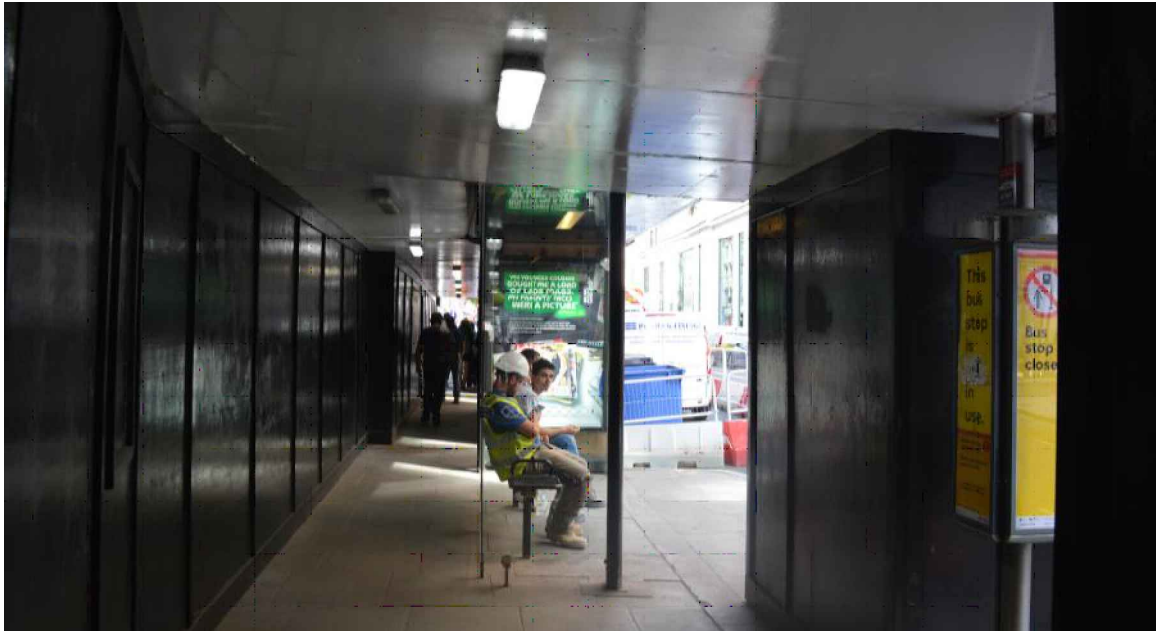
# SITE ADDRESS

New Oxford Street, London, WC1V 6PJ  
Junction with Dunns Passage - 20m Before  
Furniture Index: CAM00105AB  
Easting/Northing: 530293/181478



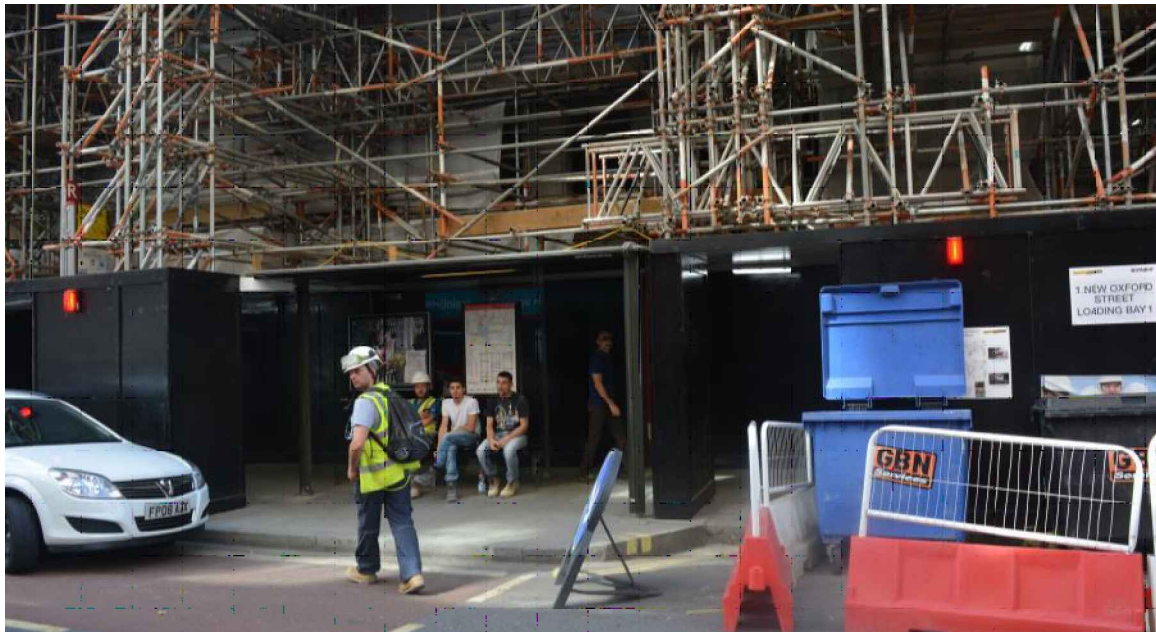
## SITE ADDRESS

New Oxford Street, London, WC1V 6PJ  
Junction with Dunns Passage - 20m Before  
Furniture Index: CAM00105AB  
Easting/Northing: 530293/181478



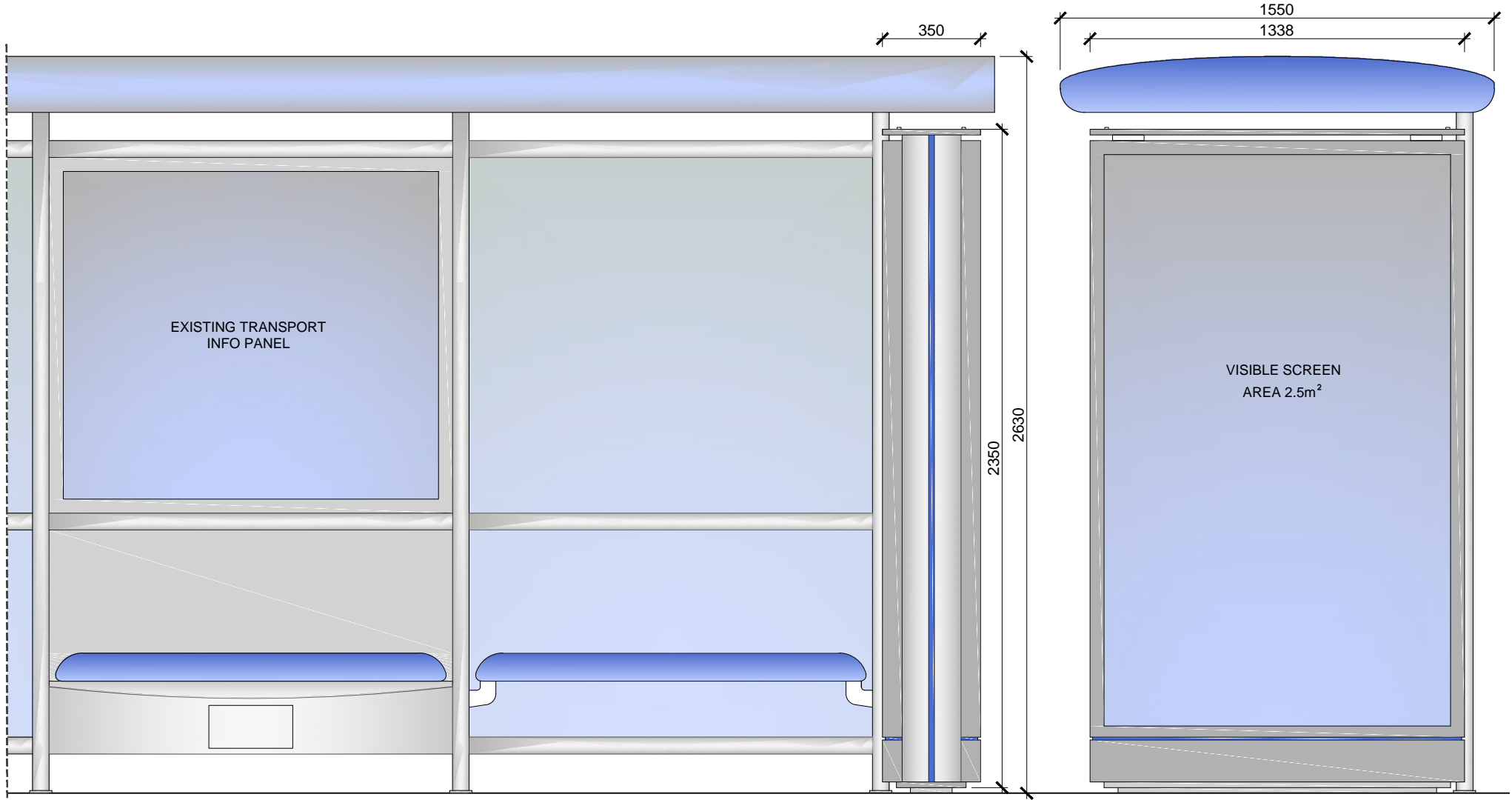
## PROPOSED ADVERTISING DISPLAY

The proposed advertising panel will comprise a double sided freestanding digital display unit at one end of the bus shelter. This will be viewed as an integral part of the existing shelter design.



# SITE ADDRESS

New Oxford Street, London, WC1V 6PJ  
Junction with Dunns Passage - 20m Before  
Furniture Index: CAM00105AB  
Easting/Northing: 530293/181478



SCALE BAR [1:20 @ A4]

