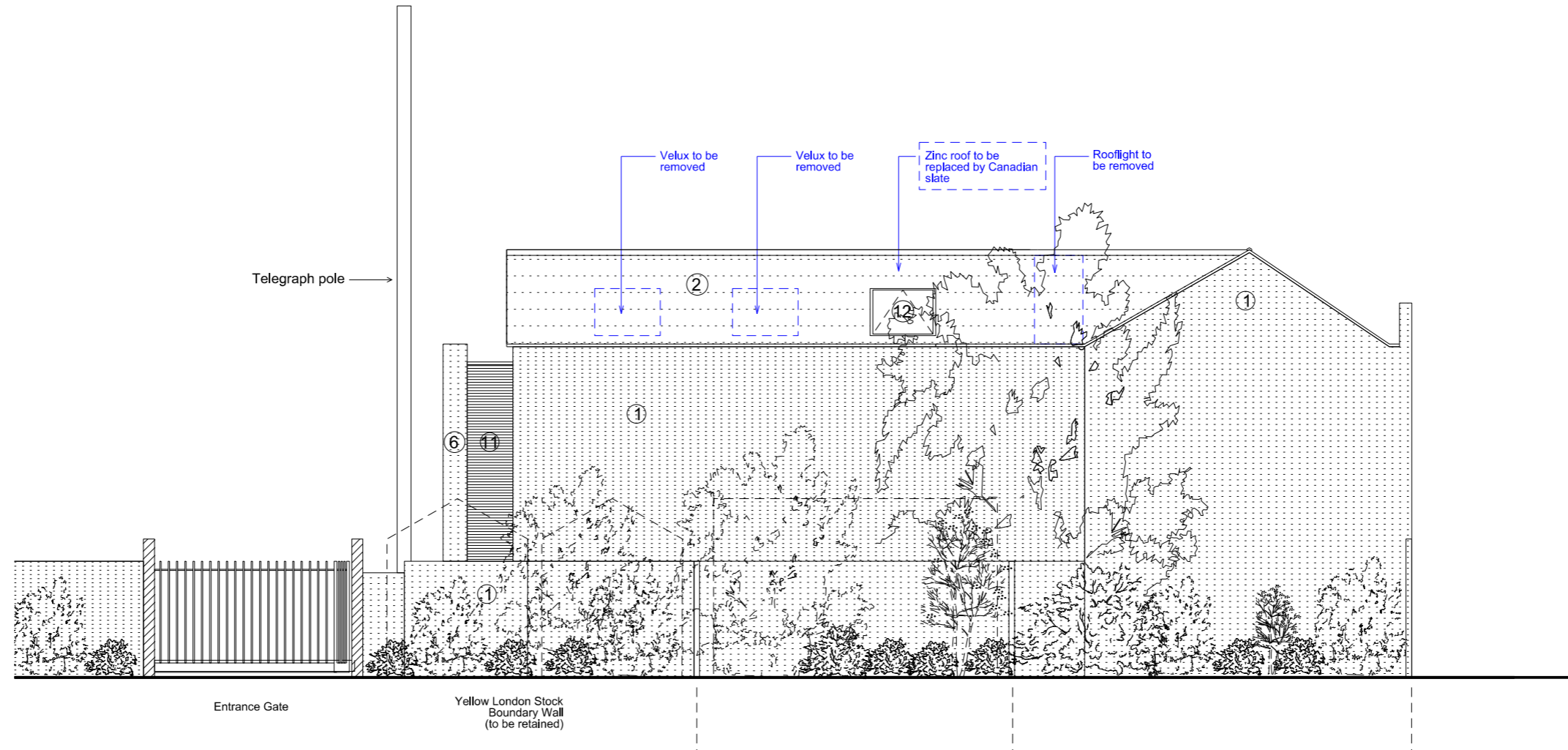


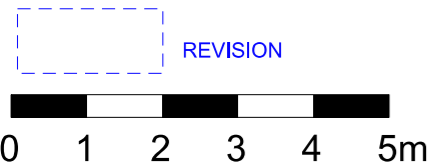
FOR PLANNING

Materials Key:

- 1. London stock brick
- 2. Slate
- 3. Aluminium framed double glazed windows
- 4. White render
- 5. Light yellow stock bricks (stretcher bond)
- 6a. Black engineering bricks (stretcher bond)
- 7. Timber sliding garage doors
- 8. Galvanised steel balustrade
- 9. Canadian slate
- 10. Galvanised steel lintels
- 11. Timber slats
- 12. Frameless rooflight



01 East Elevation
Proposed



Rev	Date	Description	drawn	checked
B	12/01/2017	Variation of condition 2	LAB	BHE
A	26/10/2016	Variation of condition	LAB	BHE

Do not Scale. Use figured dimensions only. All dimensions to be checked on site

All drawings to be read in conjunction with the Engineers' drawings. Any discrepancies between consultants drawings to be reported to the Architect before any work commences.

The Contractor's attention is drawn to the Health & Safety matters identified in the Health & Safety plan as being potentially hazardous. These items should not be considered as a complete and final list. The Work Package Contractor's normal Health and Safety obligations still apply when undertaking constructional operations both on and off site.

Owen Architects
46 Britton Street
London
EC1M 5UJ

+44 (0) 20 7608 2889 T
info@owenarchitects.co.uk

Project		Unit A - 44 St Paul's Crescent		
Title		Proposed East Elevation		
Date	Scale @A3	Project no.	Drawing no.	Rev.
26/10/2016	1:100	373	311	B