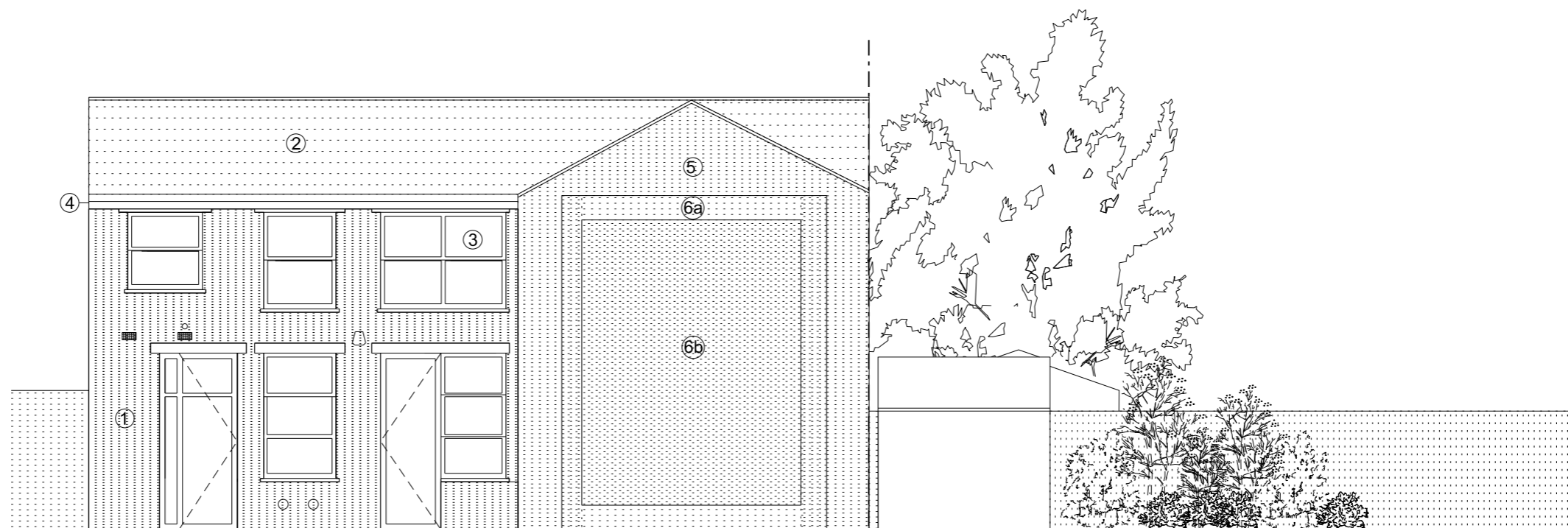


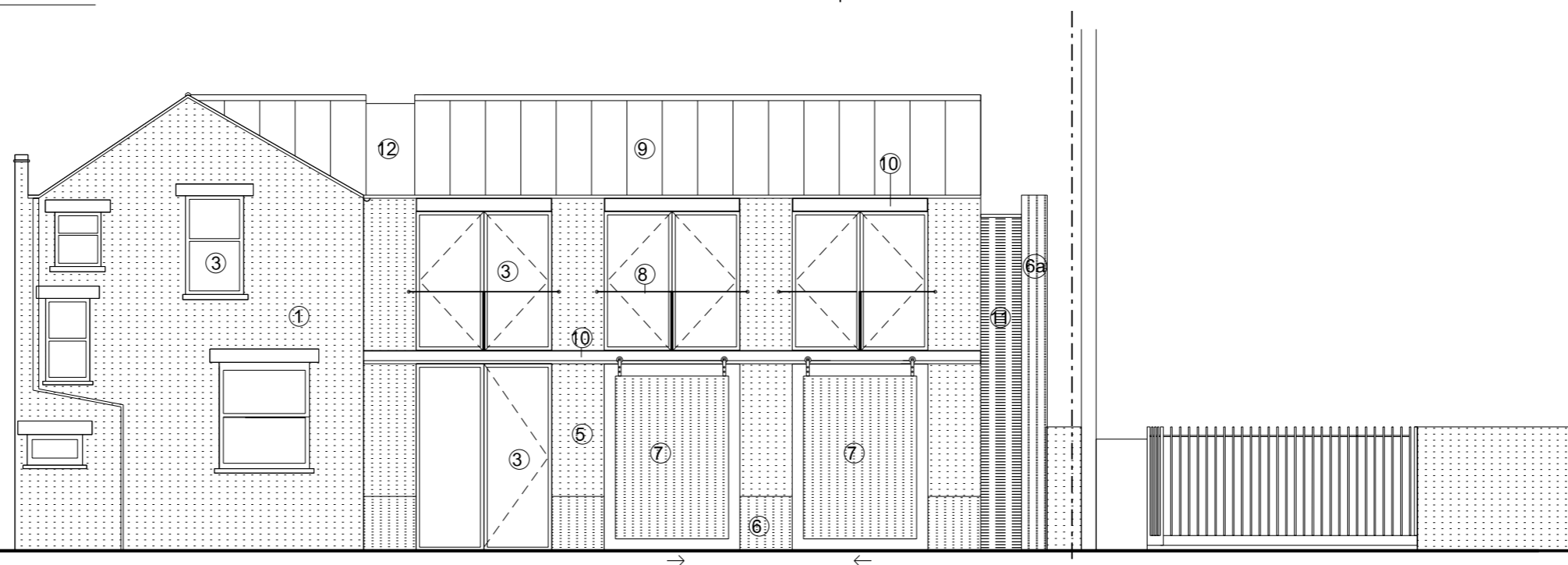
# FOR PLANNING

## Materials Key:

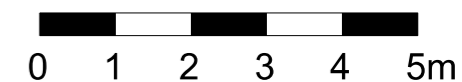
1. London stock brick
2. Slate
3. Aluminium framed double glazed windows
4. White render
5. Light yellow stock bricks (stretcher bond)
- 6a. Black engineering bricks (stretcher bond)
- 6b. Black engineering bricks (saw tooth pattern)
7. Timber sliding garage doors
8. Galvanised steel balustrade
9. Dark grey zinc roof
10. Galvanised steel lintels
11. Glass with timber slats
12. Frameless rooflight



01 South Elevation  
Proposed



02 West Elevation  
Proposed



Rev	Date	Description	drawn	checked
A	26/10/2016	Variation of a condition	LAB	ICS

Do not Scale. Use figured dimensions only. All dimensions to be checked on site

All drawings to be read in conjunction with the Engineers' drawings. Any discrepancies between consultants drawings to be reported to the Architect before any work commences.

The Contractor's attention is drawn to the Health & Safety matters identified in the Health & Safety plan as being potentially hazardous. These items should not be considered as a complete and final list. The Work Package Contractor's normal Health and Safety obligations still apply when undertaking constructional operations both on and off site.

## Owen Architects

Gate House  
1 St John's Square  
London  
EC1M 4DH

+44 (0) 20 7608 2889 T  
+44 (0) 20 7608 0758 F  
info@owenarchitects.co.uk

Project Unit A - 44 St Paul's Crescent

Title Extension  
Approved Elevations

Date	Scale @A3	Project no.	Drawing no.	Rev.
31/02/2015	1:100	373	310	A