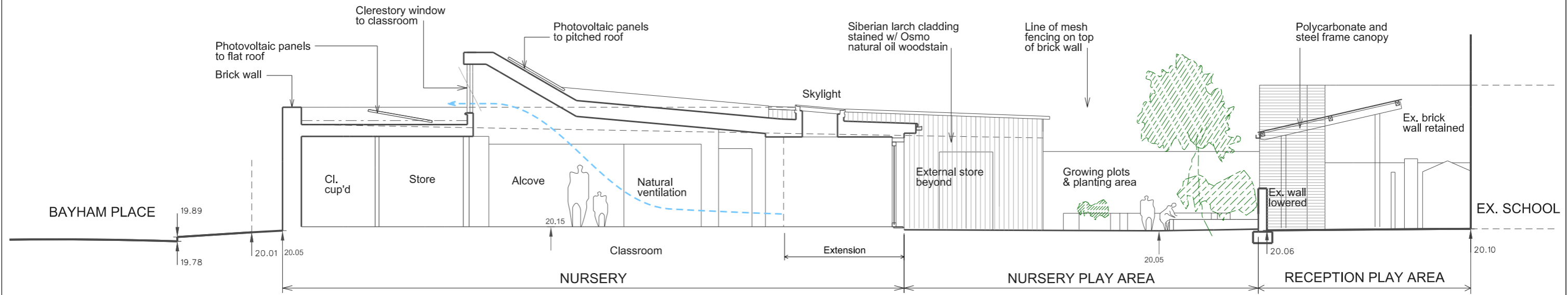
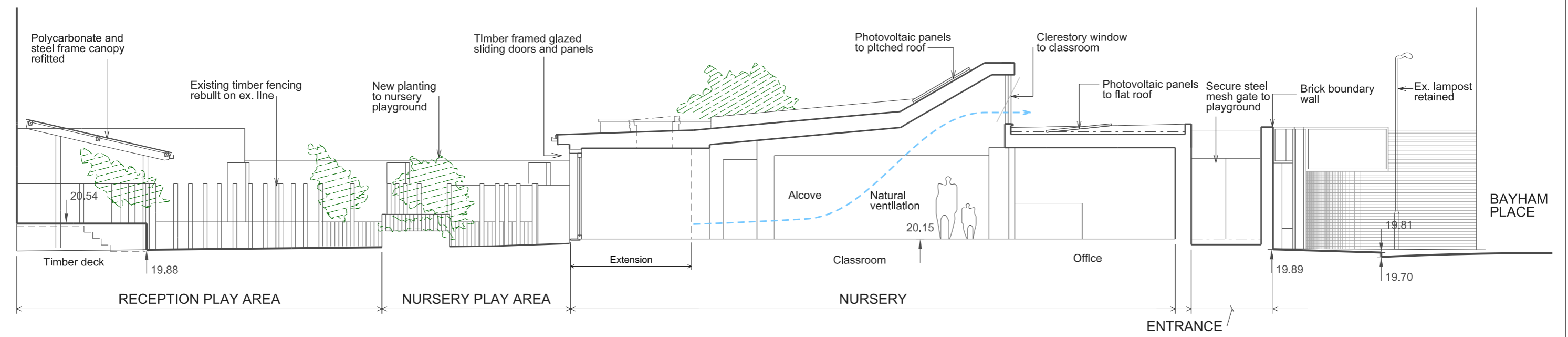


**MATERIAL KEY**

	Brick wall
	Timber cladding
	Naturally stained timber cladding



**SECTION AA'**



**SECTION BB'**

Refer to drg: 318\_P202 for 1:200 sections

Rev.	Date	By	Description
F	01.08.14		PLANNING
G	07.09.15		NON-MATERIAL AMENDMENTS: Additional PVs added on flat roof
H	25.01.17		Extension added to classrooms; shade canopy relocated.
J	08.02.17		REVISED PLANNING

Do not scale from this drawing. All dimensions to be checked on site. Notify the Architect immediately of any discrepancies. This drawing remains the copyright of the Architect.

**AAB architects**  
 10 Stock Orchard Street London N7 9RW  
 Tel 020 7700 6265 Fax 020 7700 6365 mail@aabarchitects.co.uk

**RICHARD COBDEN PRIMARY SCHOOL, NURSERY**  
 DRAWING : PROPOSED SECTIONS AA' + BB'  
 SCALE : 1:50 at A1, 1:100 at A3  
 DATE : 23.03.14

JOB NO.	LEVEL	SERIES	NO.	REV
<b>318</b>		<b>P</b>	<b>102</b>	<b>J</b>