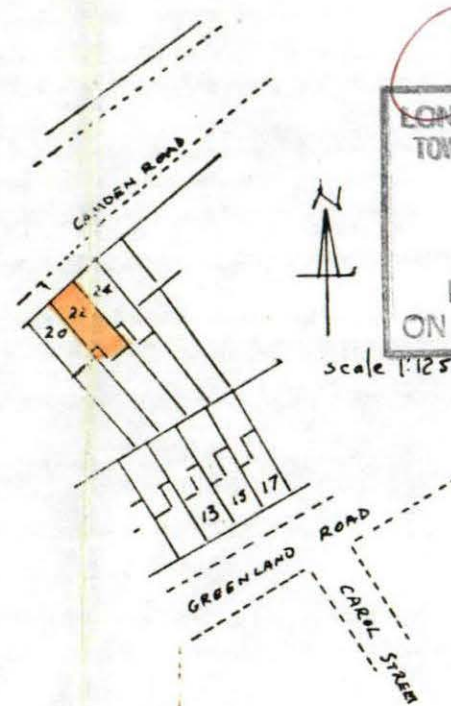




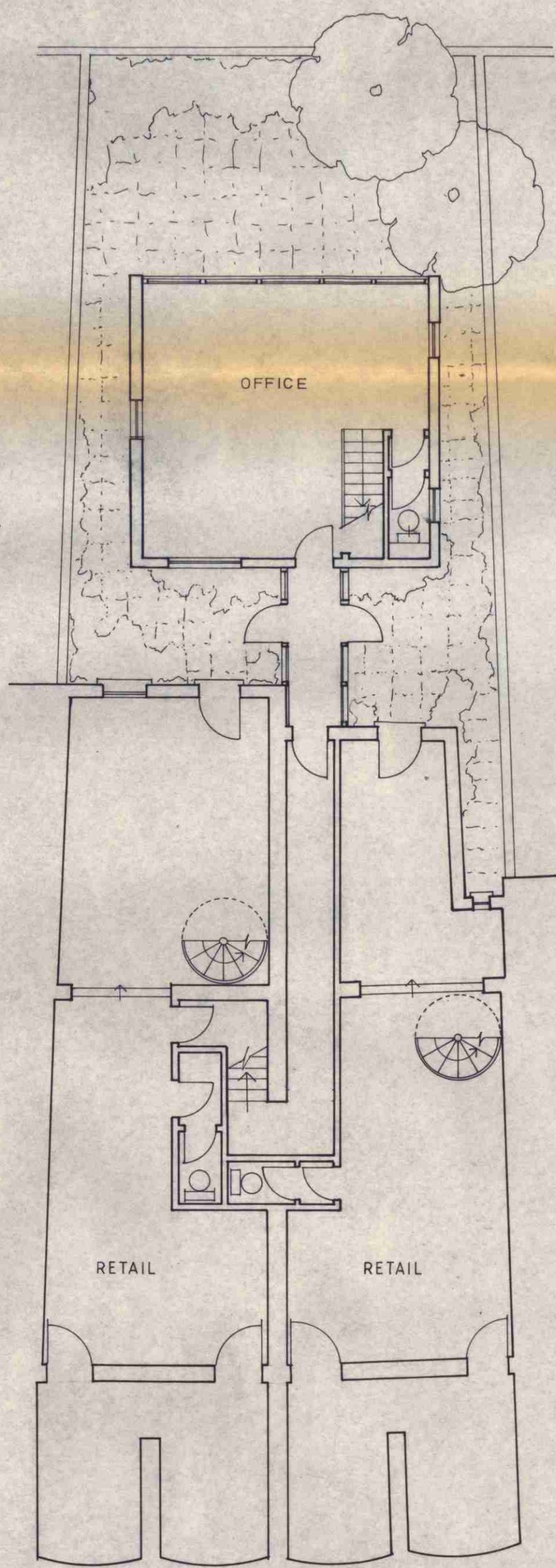
REVISIONS	DATE	BY
PLANS BY		
BRIAN J PARROTT FIAS FFB 14 KINGSFIELD RD HARROW MDDX HA1 3DD tel 001 064 2057		
CLIENT		
TP9100283		
PROJECT		
22 CAMDEN ROAD RECEIVED		
TITLE		
Plans and Elevations		
SCALE 1:100	DRAWN BY BSP	
	DATE 6/2/91	
	DRWG No	



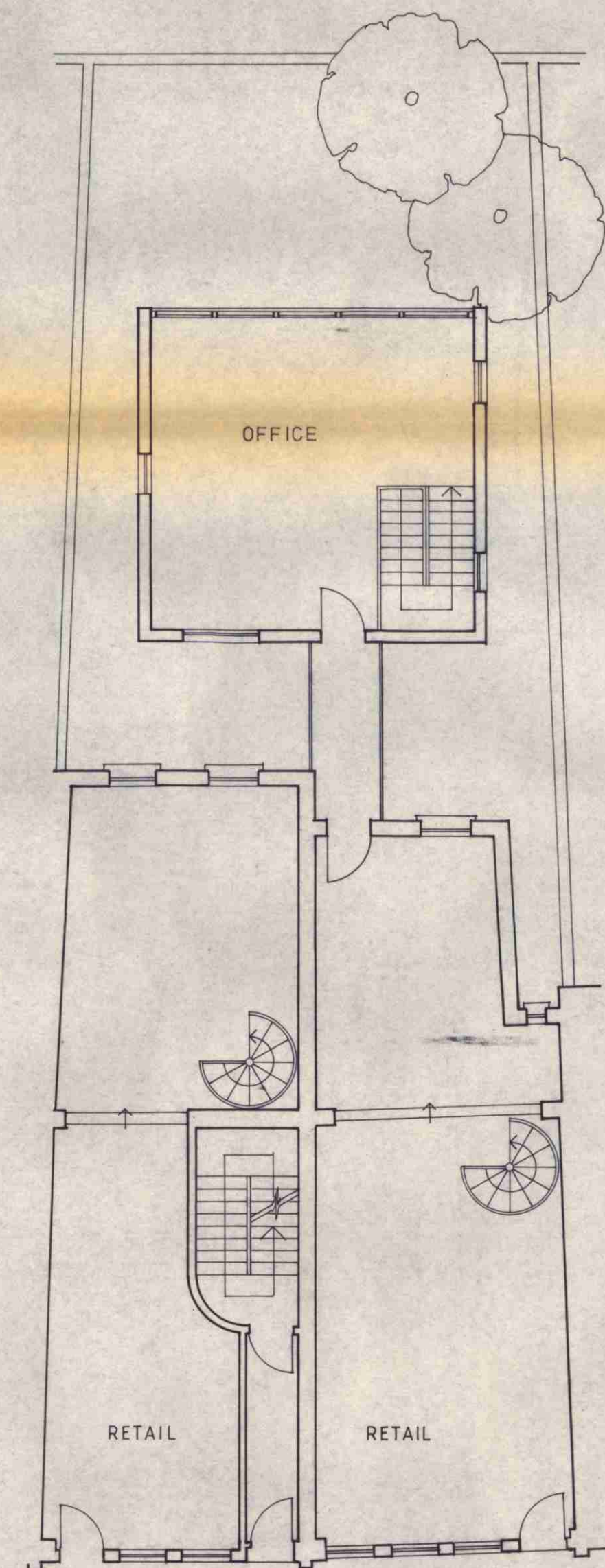
Good Copy

LONDON BOROUGH OF CAMDEN
TOWN AND COUNTRY PLANNING ACTS
14 NOV 1991
PLANS APPROVED
ON BEHALF OF THE COUNCIL

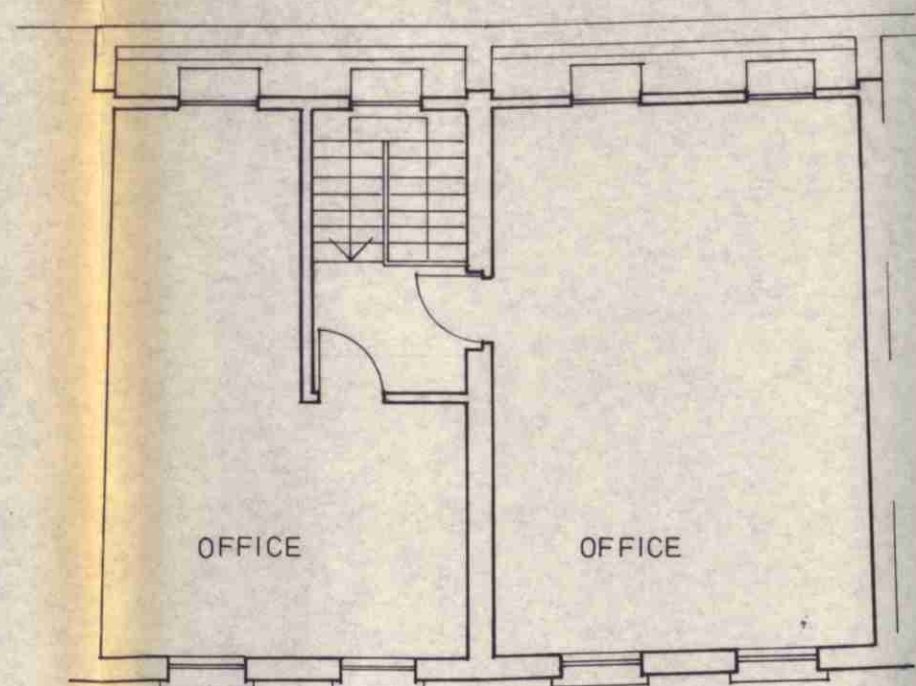
casement's



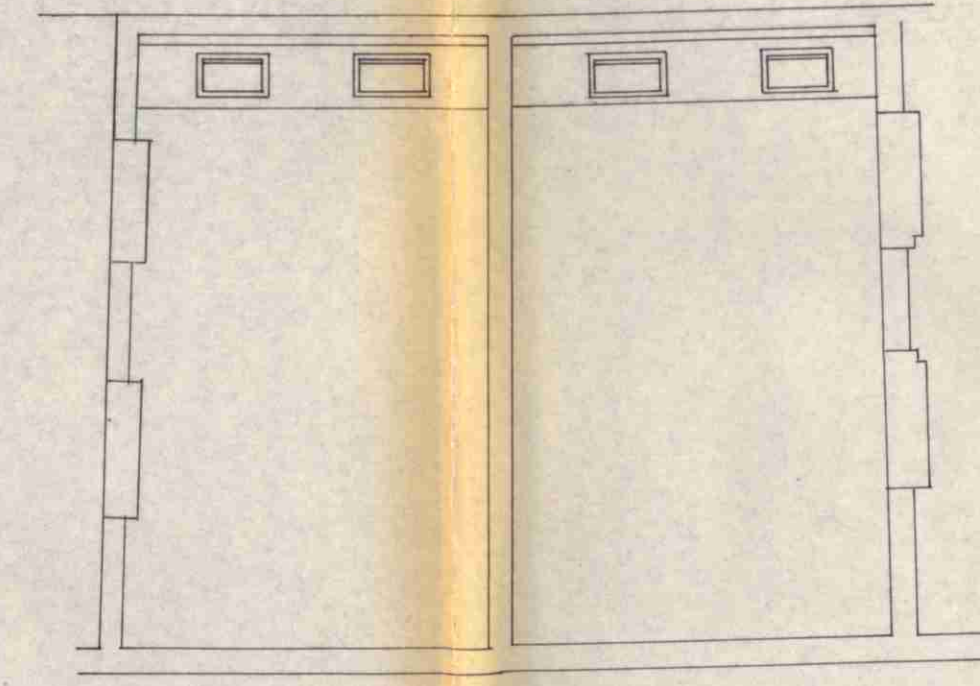
BASEMENT



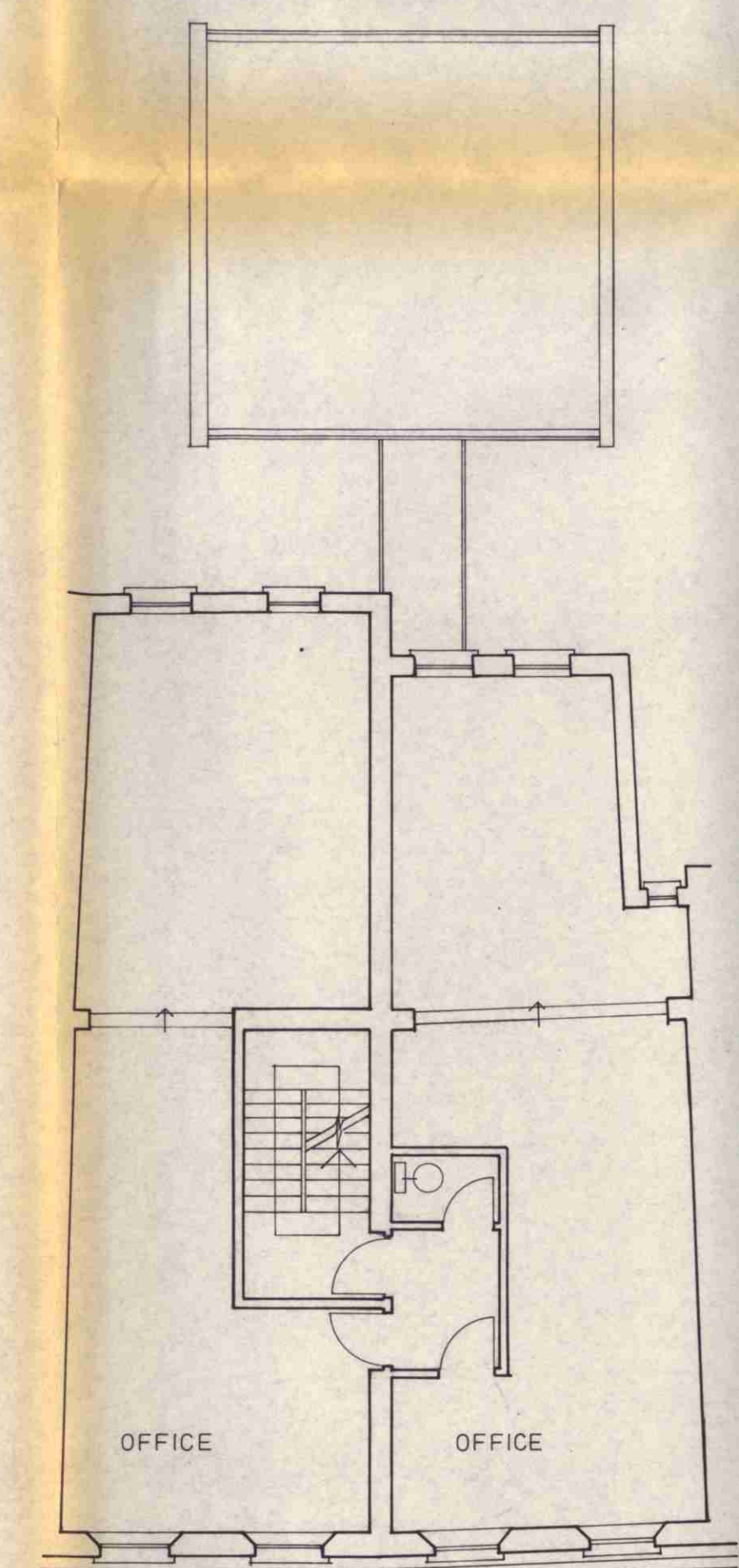
GROUND FLOOR



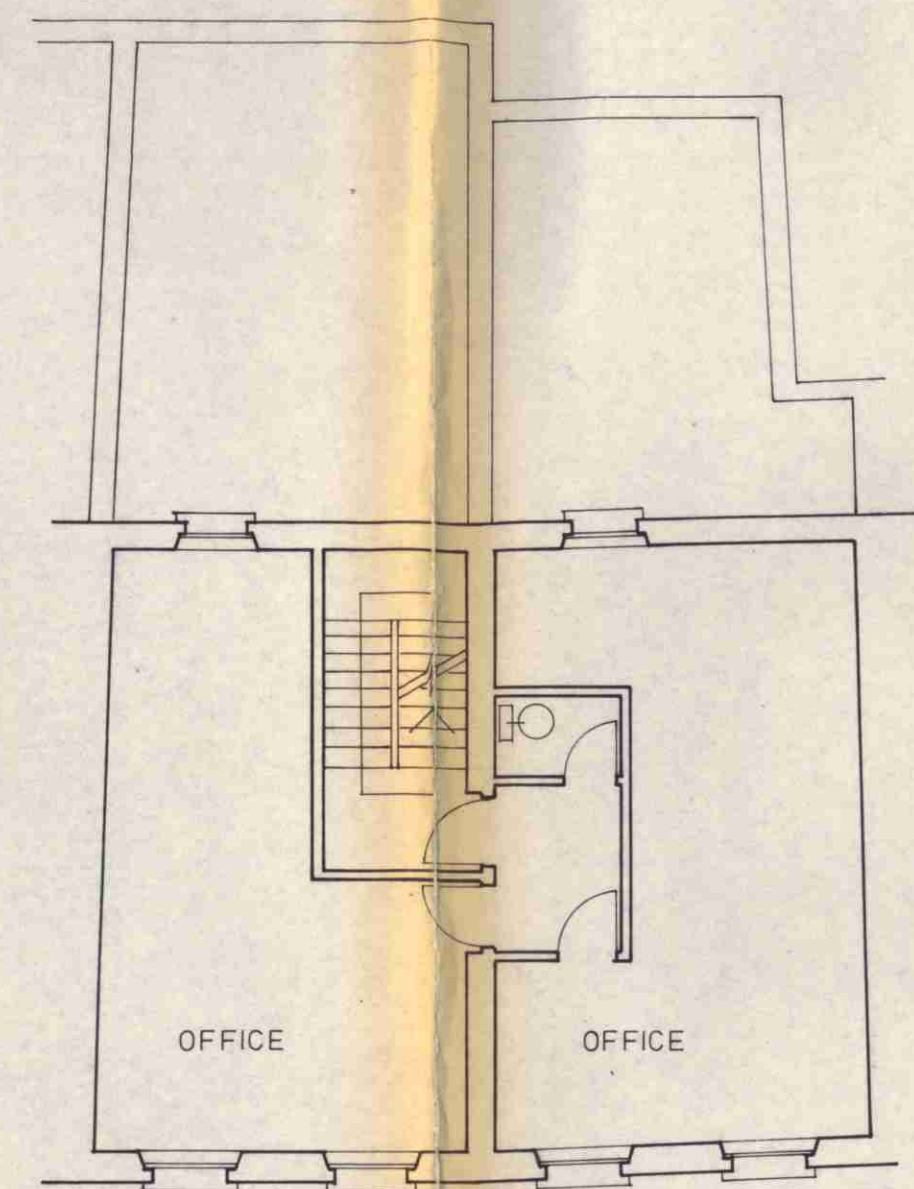
THIRD FLOOR



ROOF PLAN



FIRST FLOOR



SECOND FLOOR

REVISION

NOTES

LONDON BORO OF CROYDON
PLANNING AND TRANSPORT
DEPARTMENT
8 NOV 1989
RECEIVED

8903645
HB8970522
TP8903691
HB8970529

KOSKI SOLOMON
PARTNERSHIP

R.I.B.A. CHARTERED ARCHITECTS
14 GREENLAND STREET - LONDON NW1 0ND - 01 482 4111

PROJECT
22 - 24 CAMDEN ROAD

DRAWING
PROPOSED PLANS

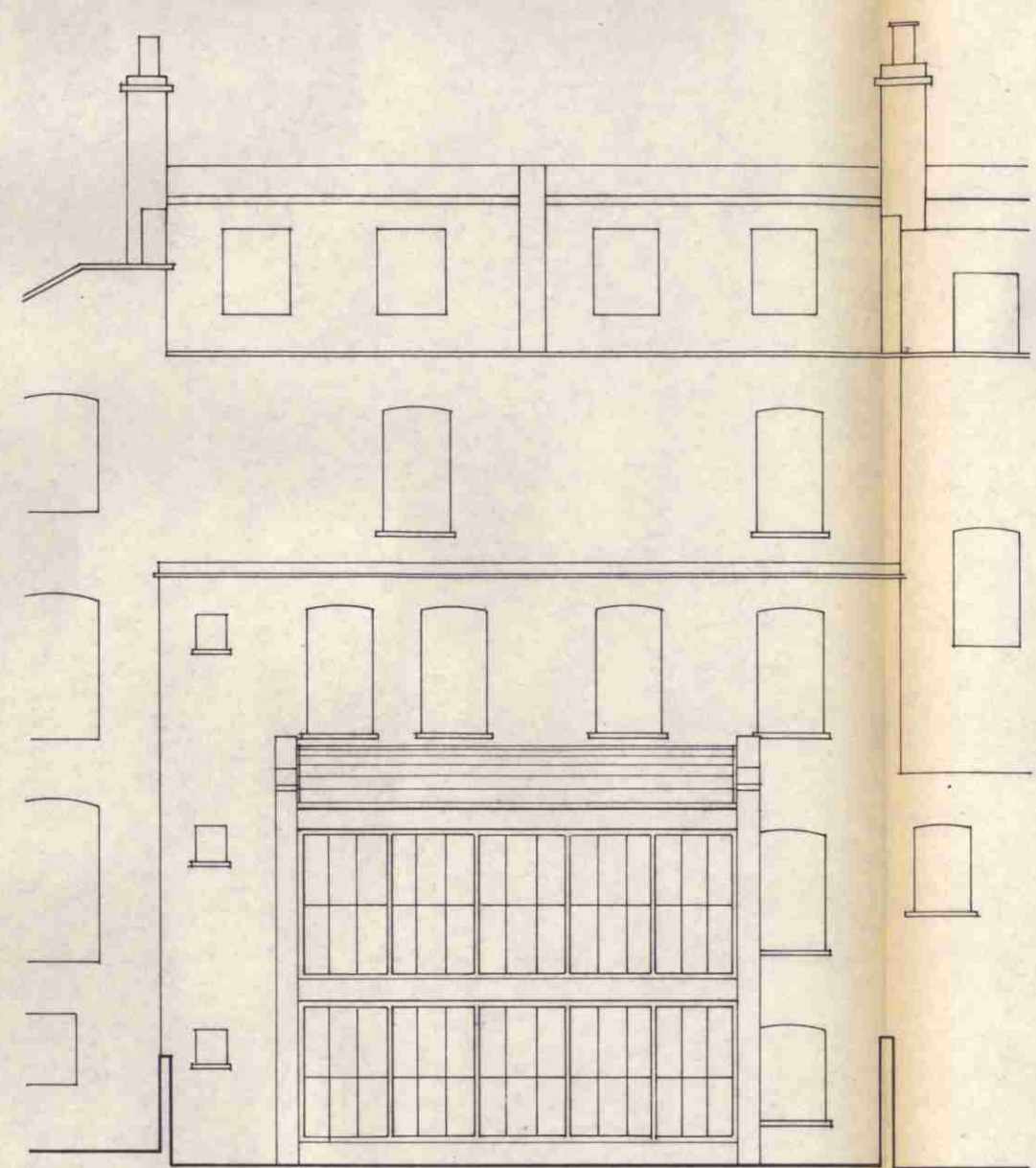
SCALE 1:100 DATE OCT '89
DRAWING NO. CMD 002 REVISION



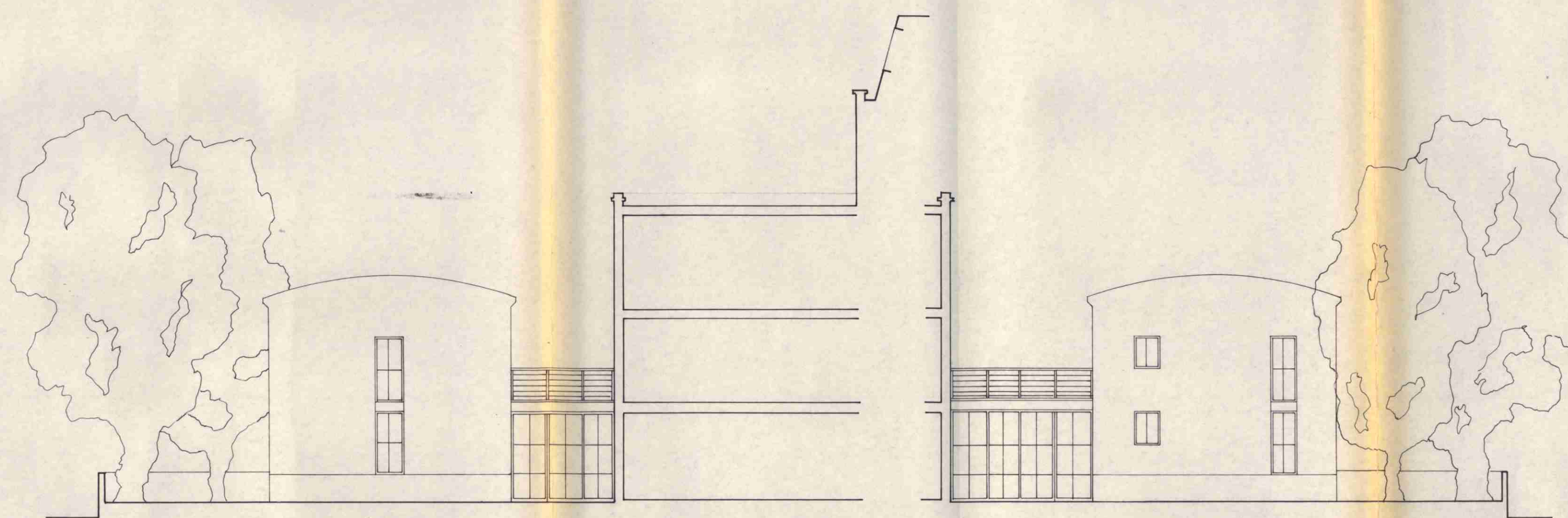
FRONT ELEVATION



REAR ELEVATION



REAR ELEVATION (ANNEX)



SIDE ELEVATION N.E.

SIDE ELEVATION S.W.

REVISION

NOTES

LONDON BOROUGH OF CROYDON
PLANNING AND TRANSPORT
DEPARTMENT
8 NOV 1989
RECEIVED

8903645

HB8970522

TP8903691

HB8970529

KOSKI SOLOMON
PARTNERSHIP

R.I.B.A. CHARTERED ARCHITECTS

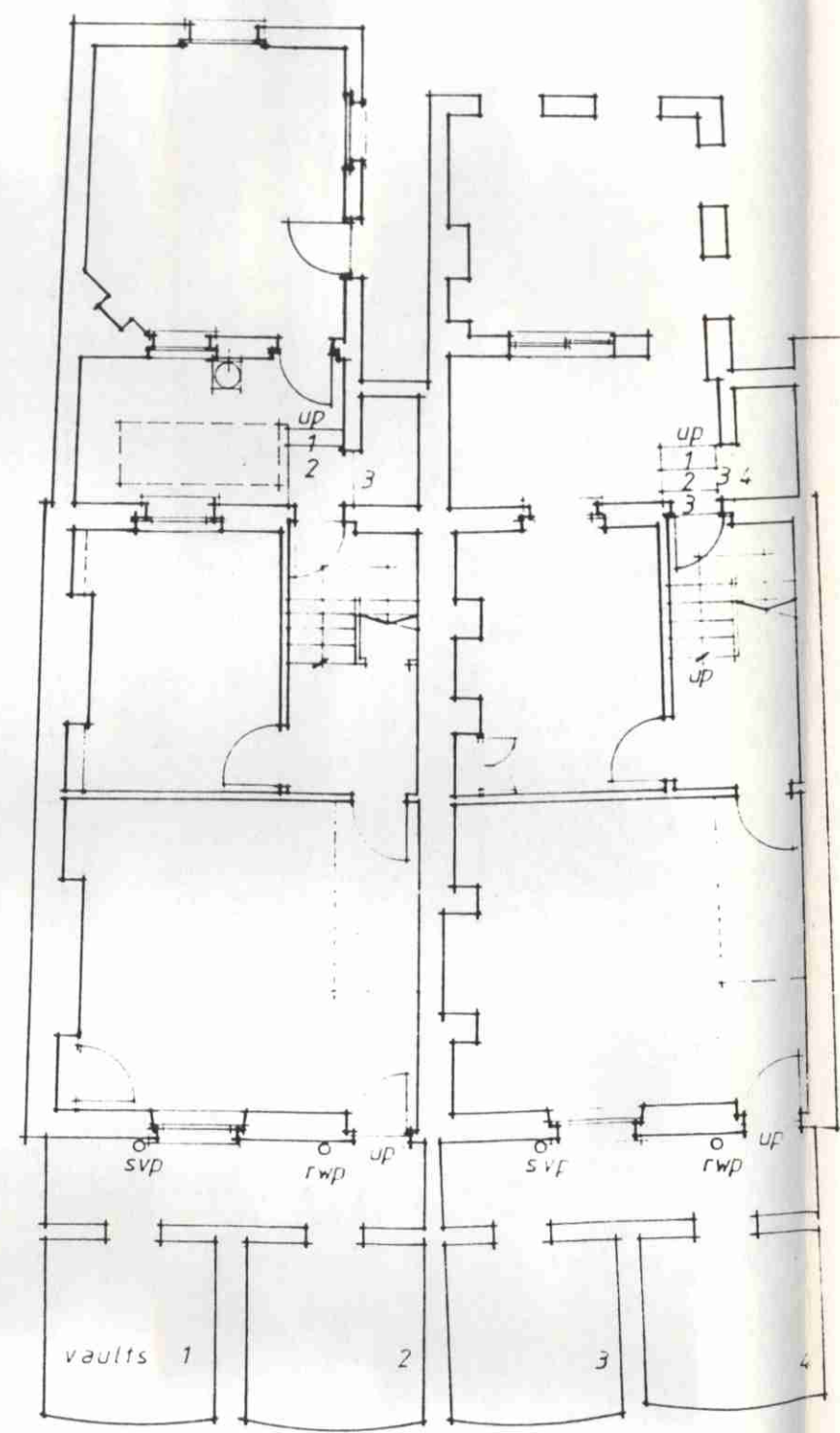
14 GREENLAND STREET - LONDON NW1 0ND - 01 482 4111

PROJECT
22 - 24 CAMDEN ROAD

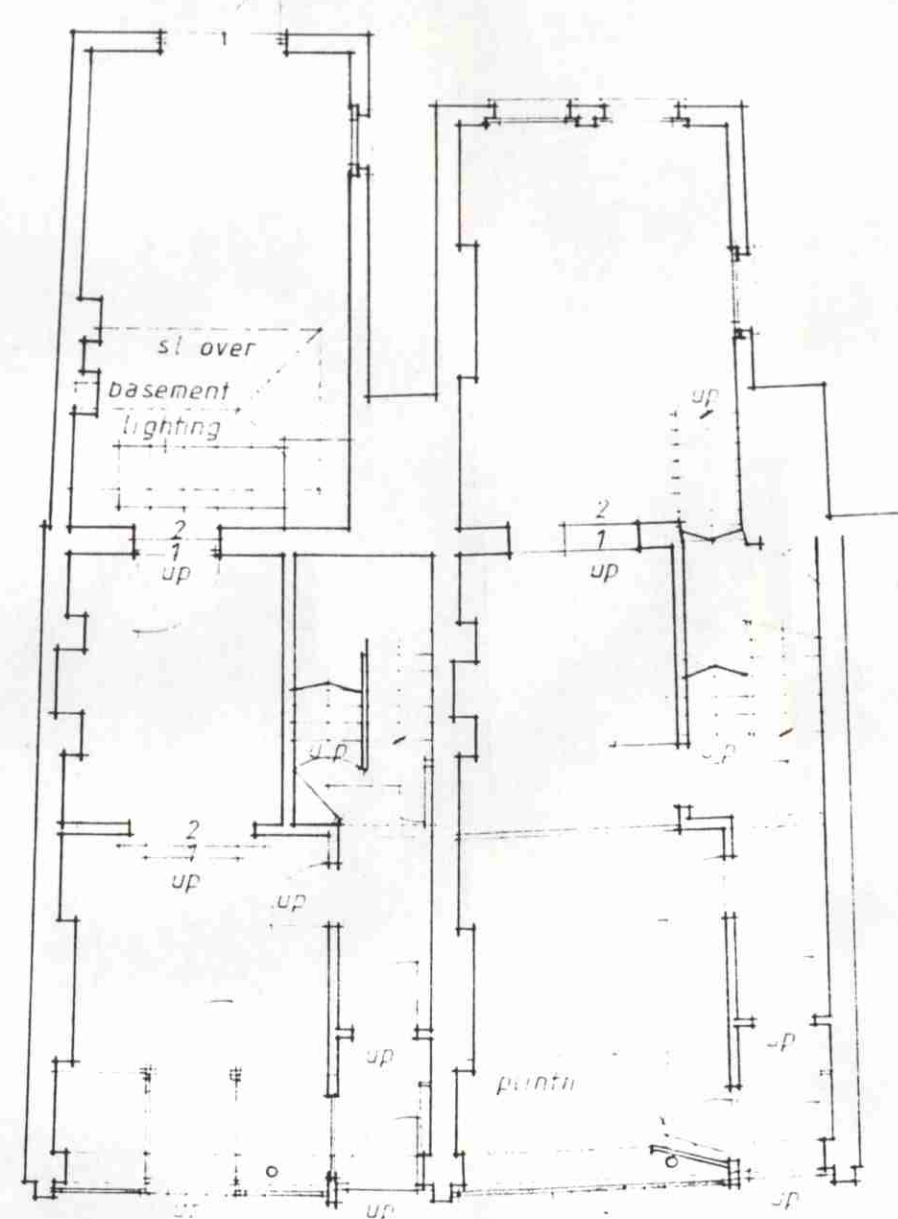
DRAWING
PROPOSED ELEVATIONS

SCALE 1:100 DATE OCT. '89

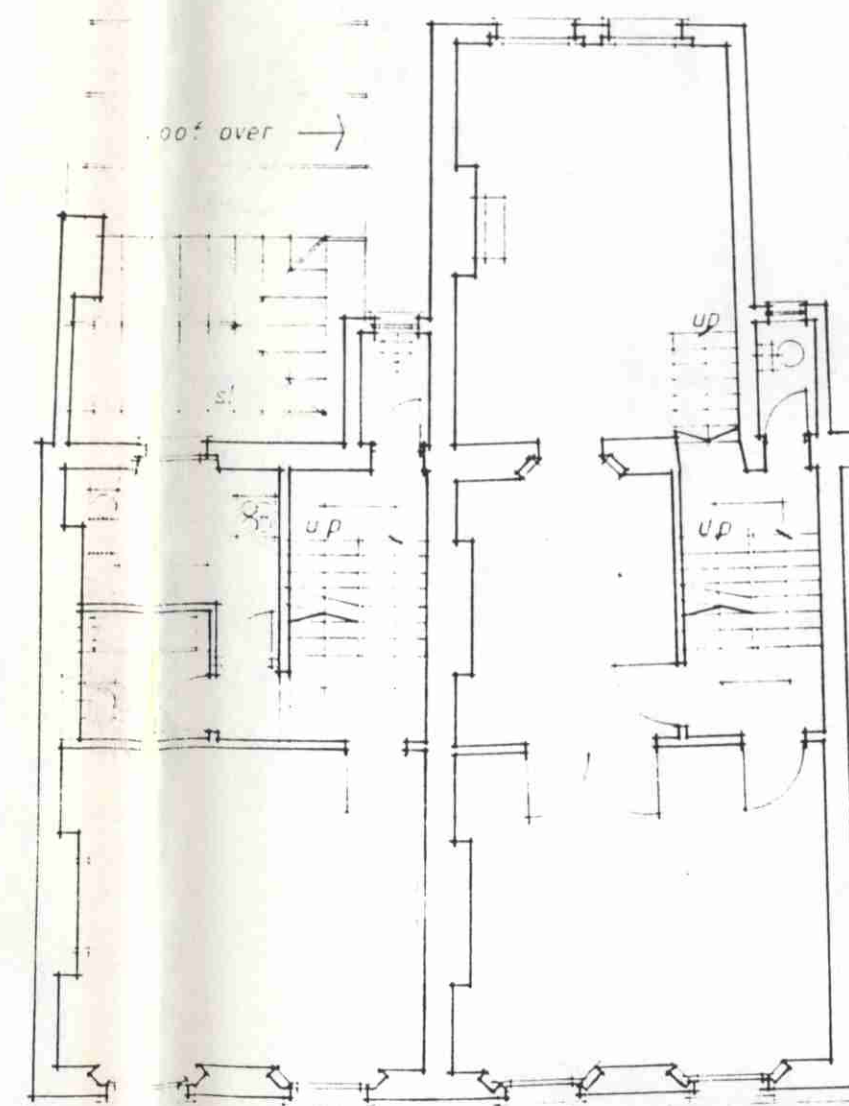
DRAWING NO. CMD 003 REVISION



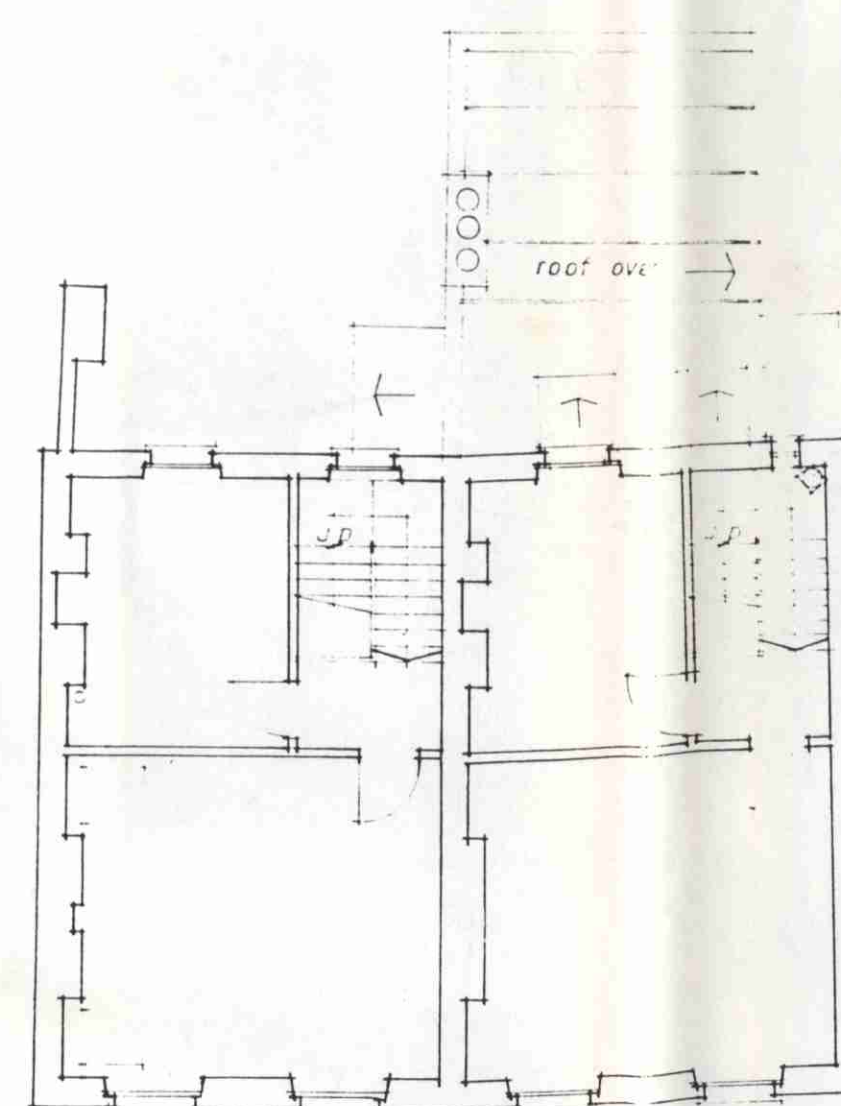
BASEMENT



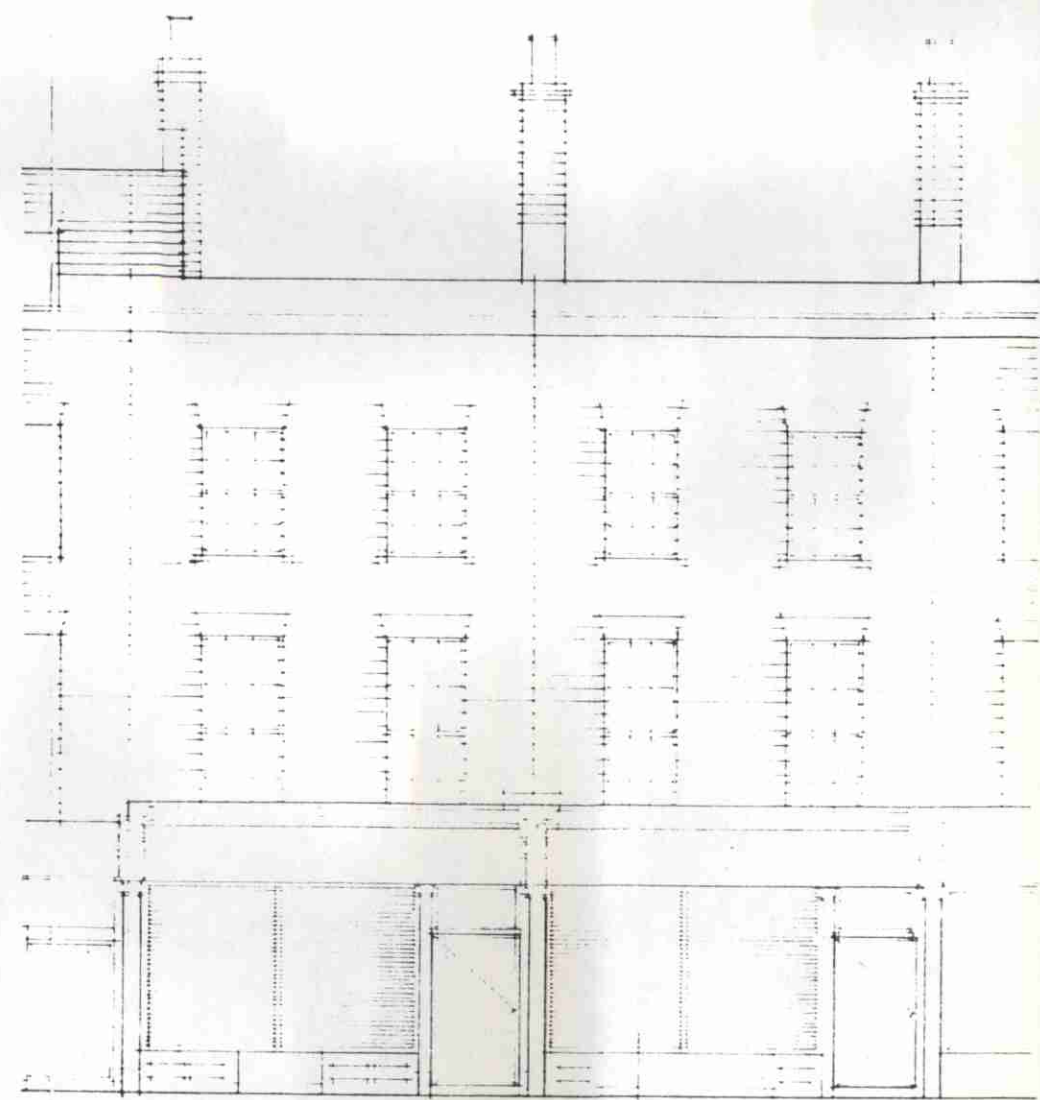
GROUND FLOOR



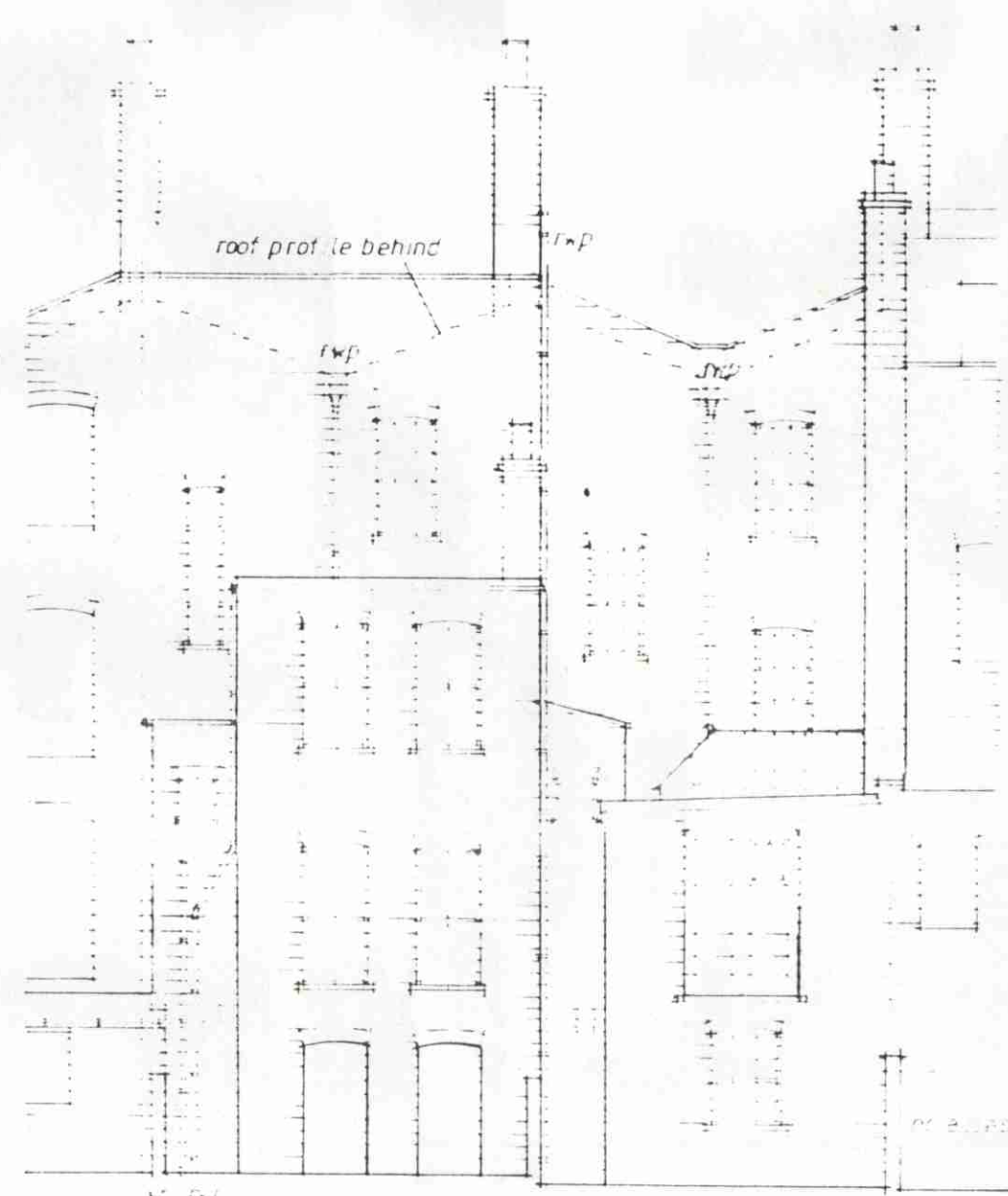
FIRST FLOOR



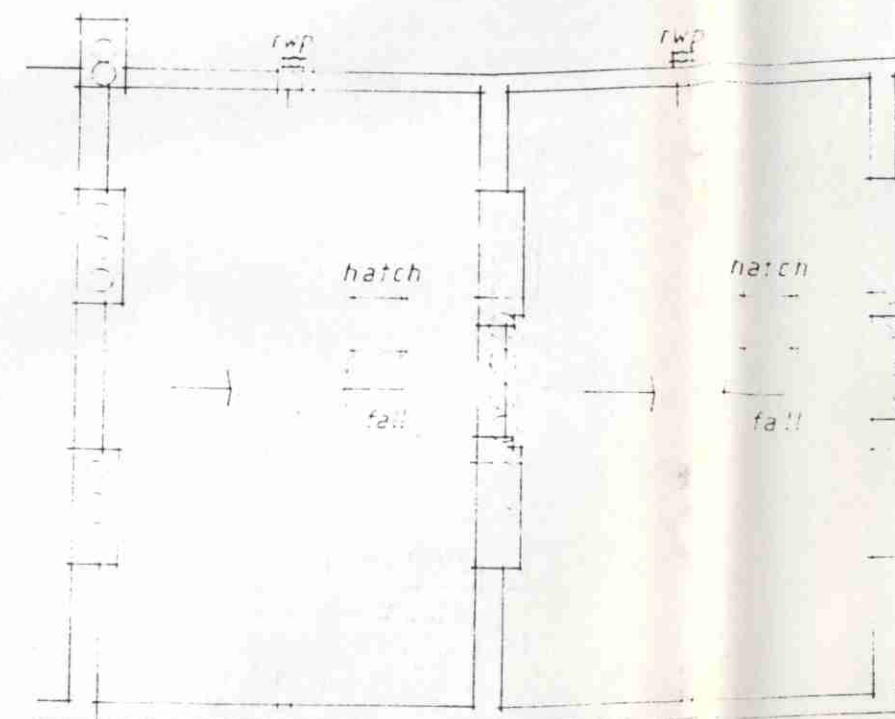
SECOND FLOOR



FRONT ELEVATION



REAR ELEVATION



ROOF LEVEL

REVISION

NOTES
Metres CAMDEN TOWN 291



TP89-3645

HB8770522

LONDON BOROUGH OF CAMDEN
PLANNING AND TRANSPORT
DEPARTMENT
25 OCT 1989
RECEIVED

KOSKI SOLOMON
PARTNERSHIP

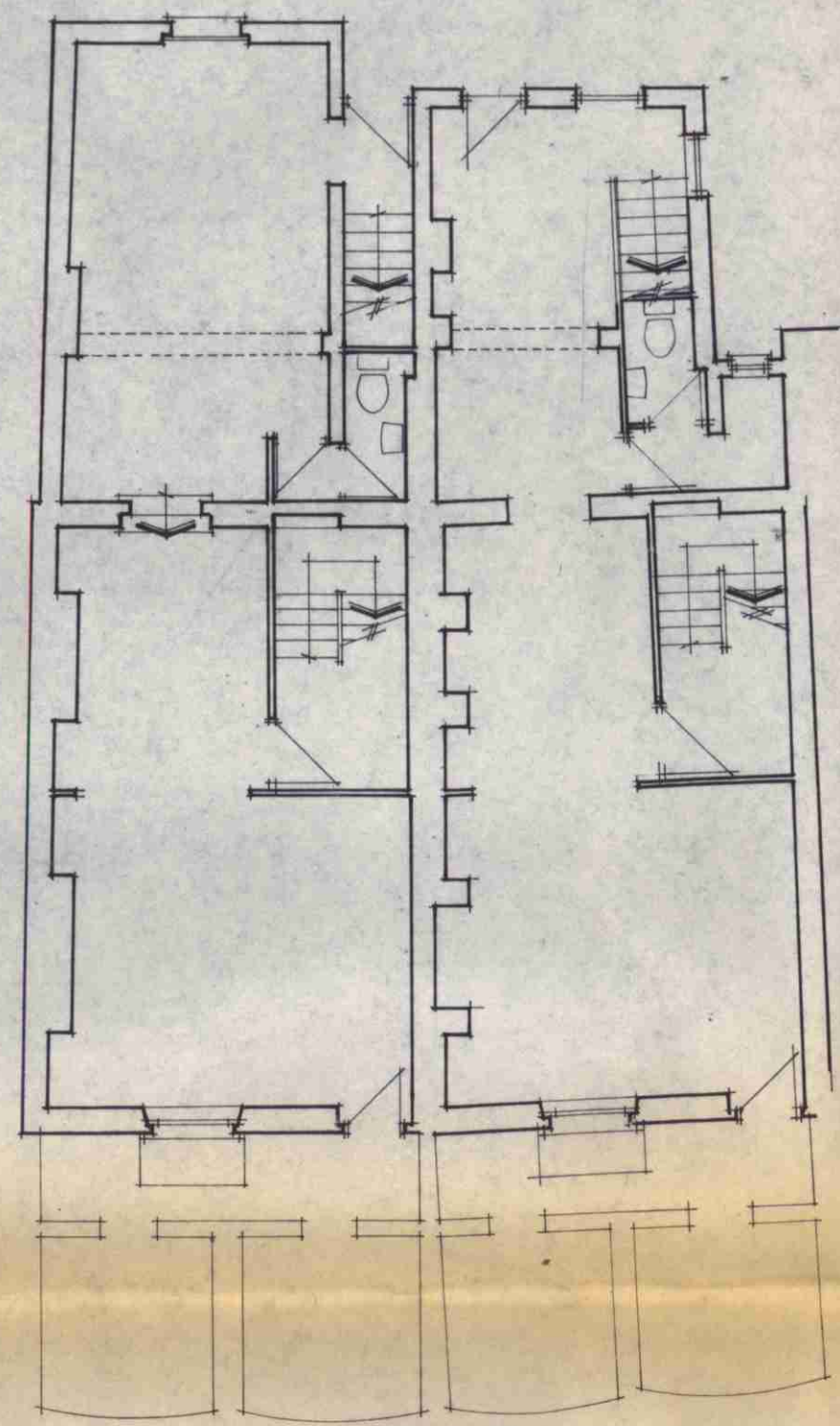
R.I.B.A. CHARTERED ARCHITECTS
14 GREENLAND STREET - LONDON NW1 0ND 01 482 4111

PROJECT
22-24 CAMDEN ROAD

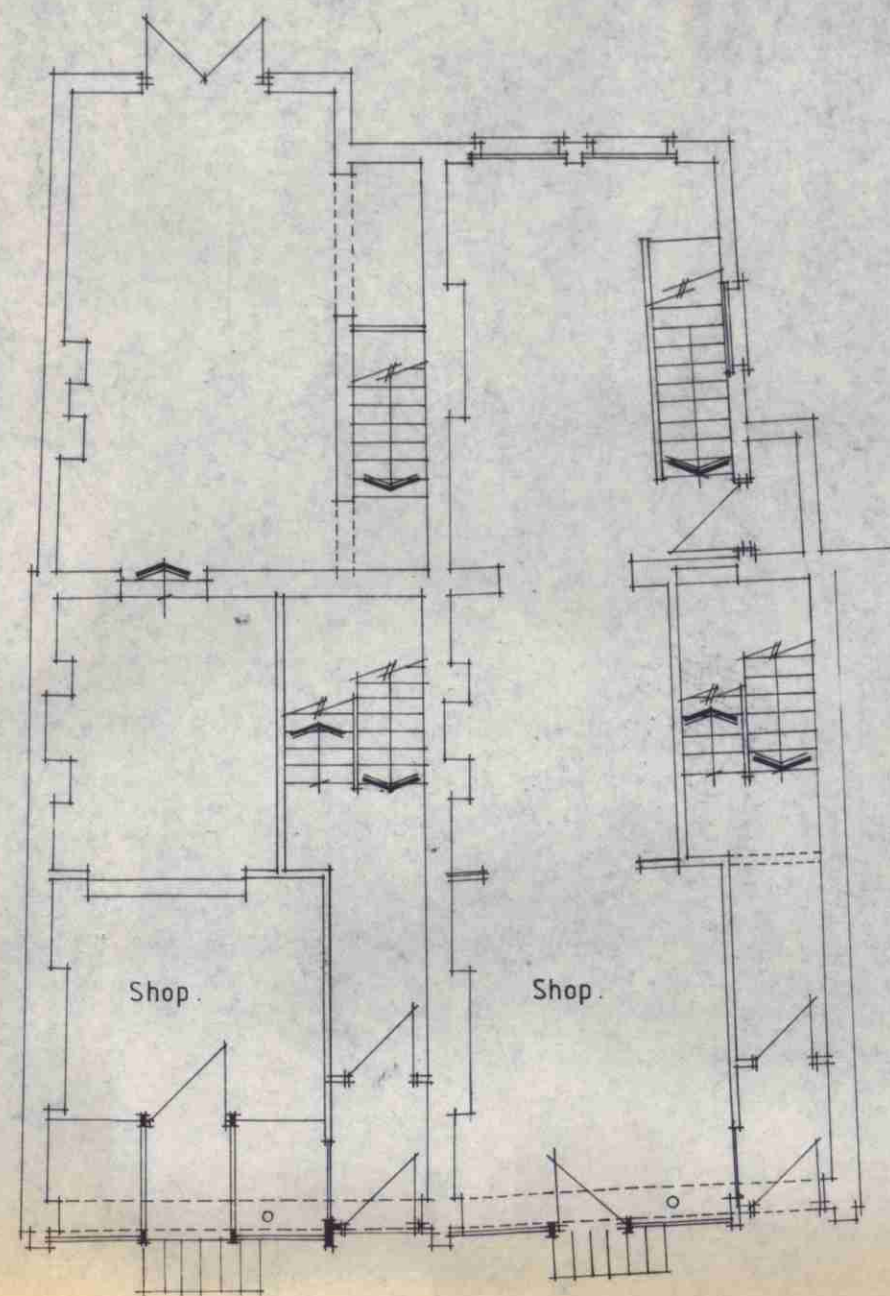
DRAWING
EXISTING PLANS &
ELEVATIONS

SCALE 1:100 DATE OCT. '89

DRAWING NO. CMD 001 REVISION

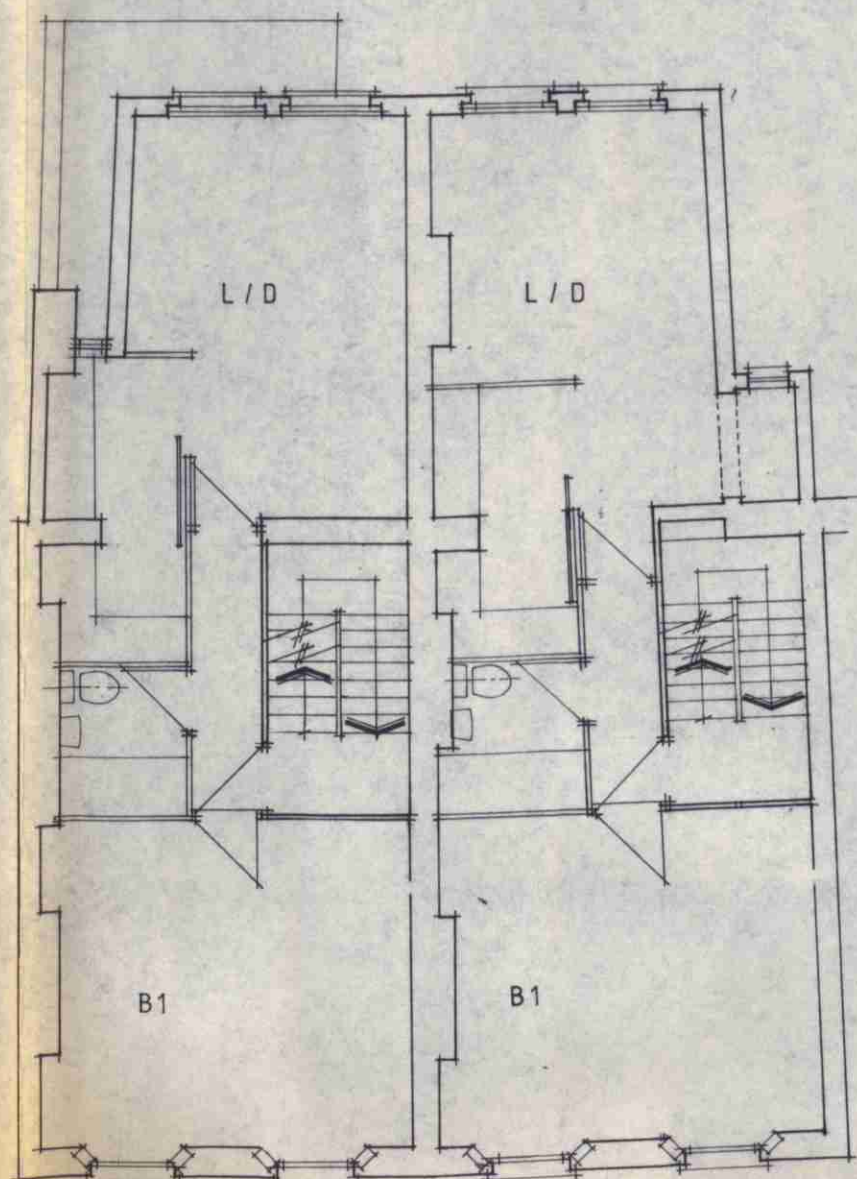


BASEMENT.



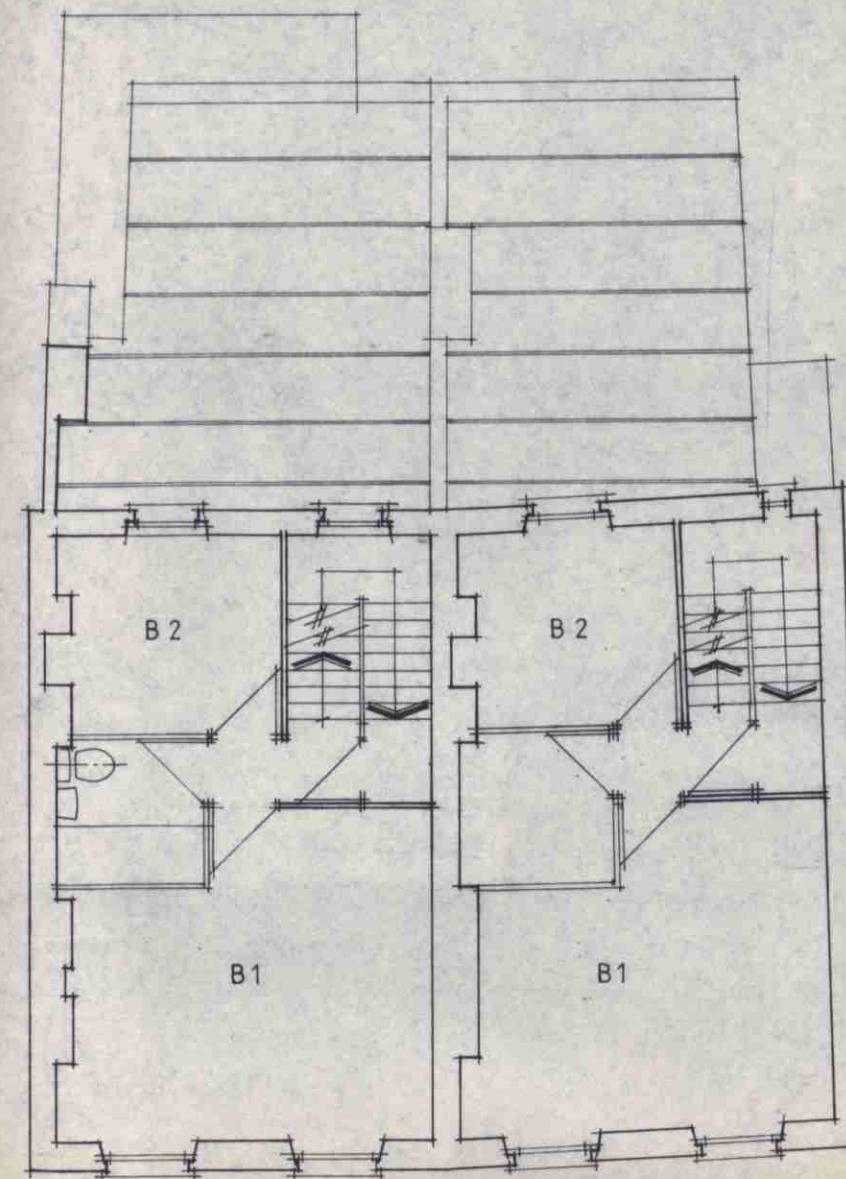
C A M D E N R O A D

GROUND FLOOR.



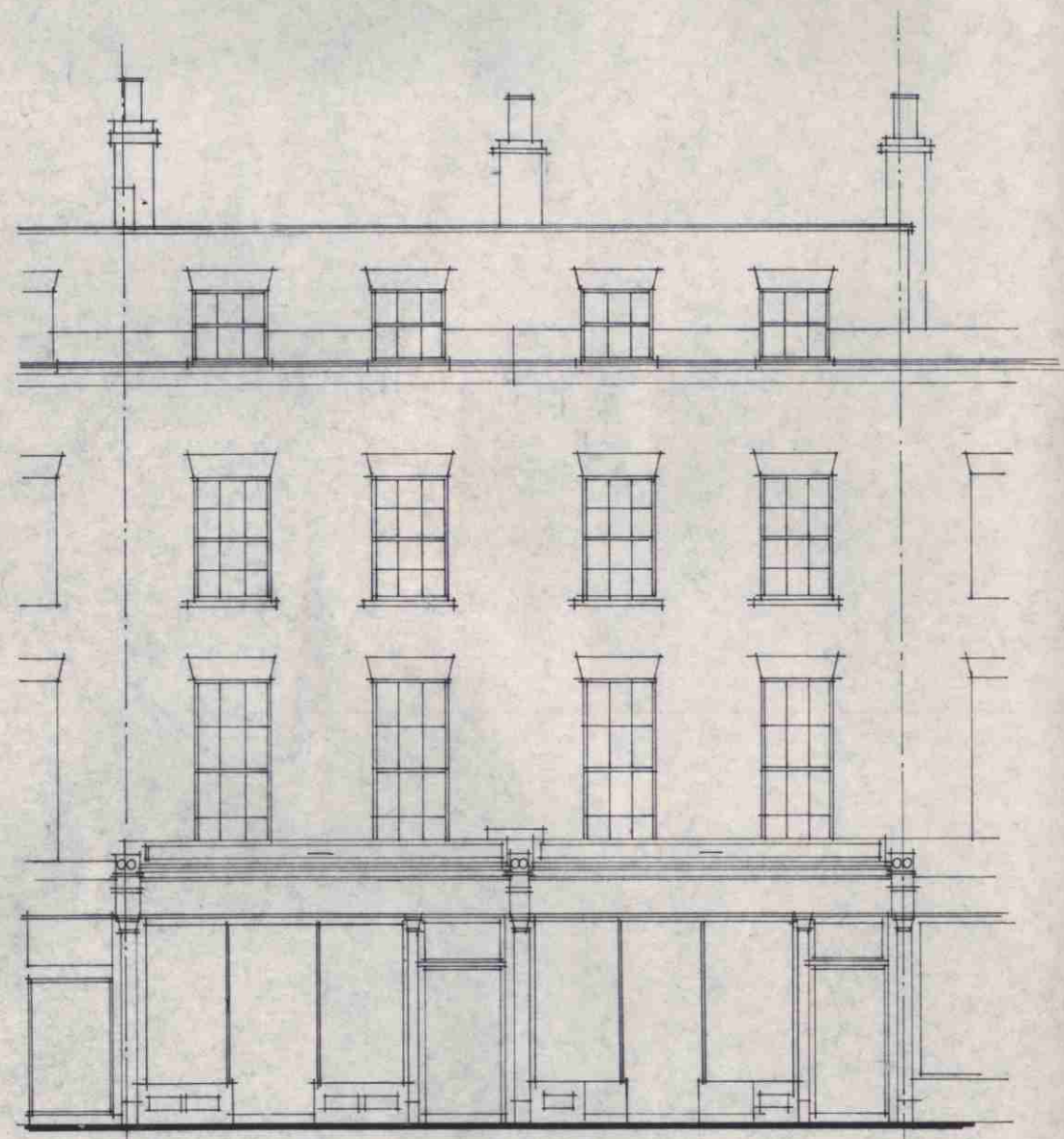
Flat A. Flat B.

FIRST FLOOR.



Maisonette A. (lower floor) Maisonette B. (lower floor)

SECOND FLOOR.

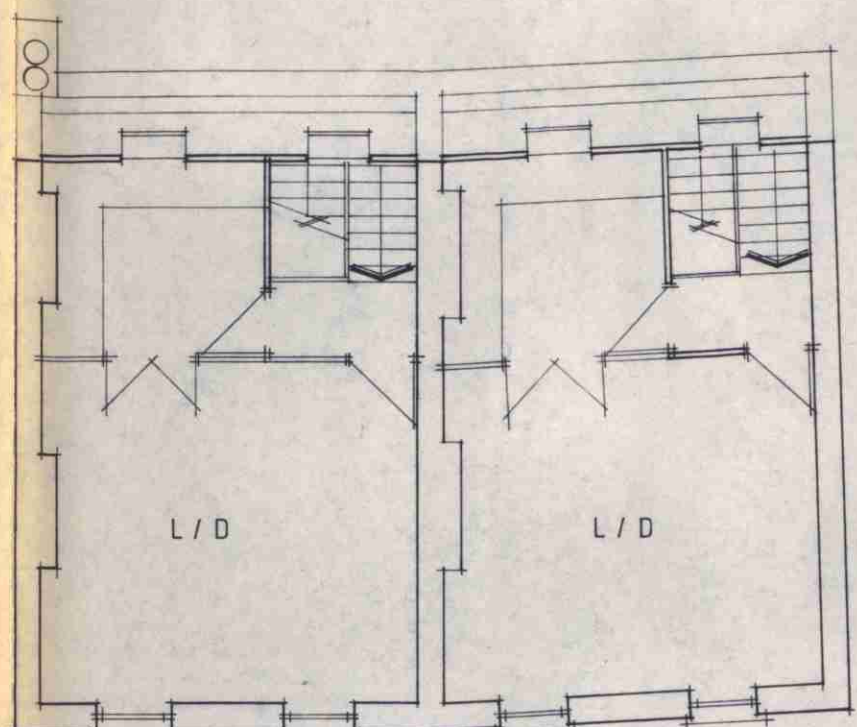


existing shopfronts, wooden roll shutters etc retained/refurbished.

FRONT ELEVATION.

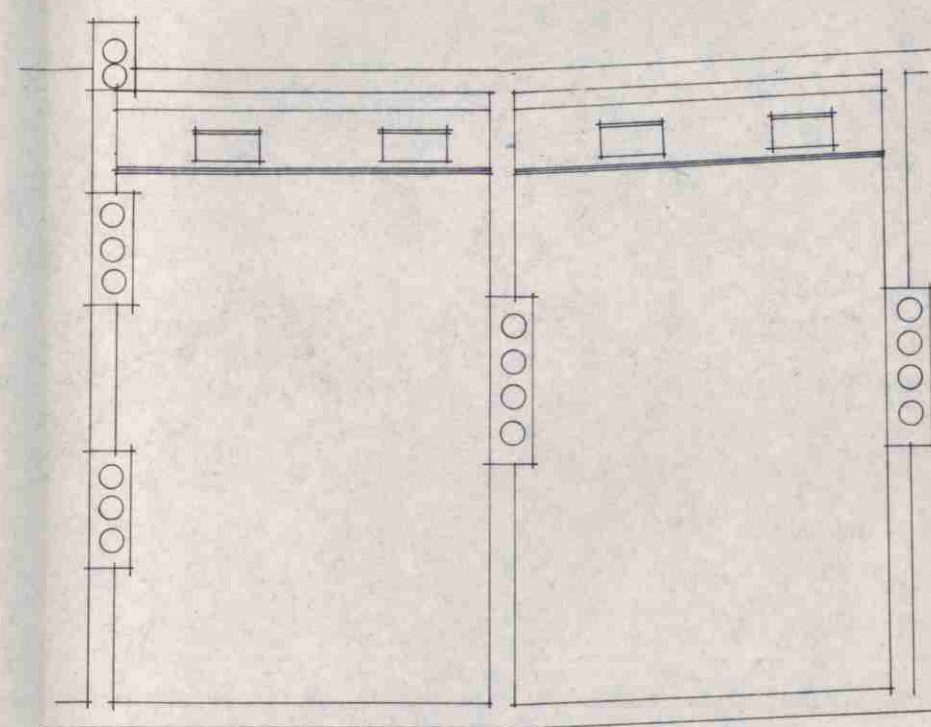


REAR ELEVATION.

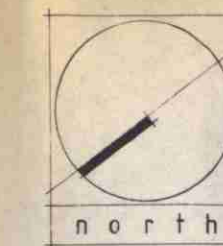


Maisonette A. (upper floor) Maisonette B. (upper floor)

THIRD FLOOR.



ROOF LEVEL.



REVISION
A. SUBMISSIONS AND LEGEN
AT FIRST FLOOR REMOVED
D.S. 00

NOTES

HB9,070415 R1

TP9'003106 R1

LONDON BOROUGH OF CAMDEN
PLANNING AND TRANSPORT
DEPARTMENT
14 MAY 1990
RECEIVED

LONDON BOROUGH OF CAMDEN
TOWN AND COUNTRY PLANNING ACT 1990
11 JUL 1990.
APPROVED
ON BEHALF OF THE COUNCIL

KOSKI SOLOMON
PARTNERSHIP

R.I.B.A. CHARTERED ARCHITECTS

14 GREENLAND STREET - LONDON NW1 0ND - 01 482 4111

PROJECT

22-24 Camden Road.

DRAWING
PROPOSED PLANS ELEVATIONS

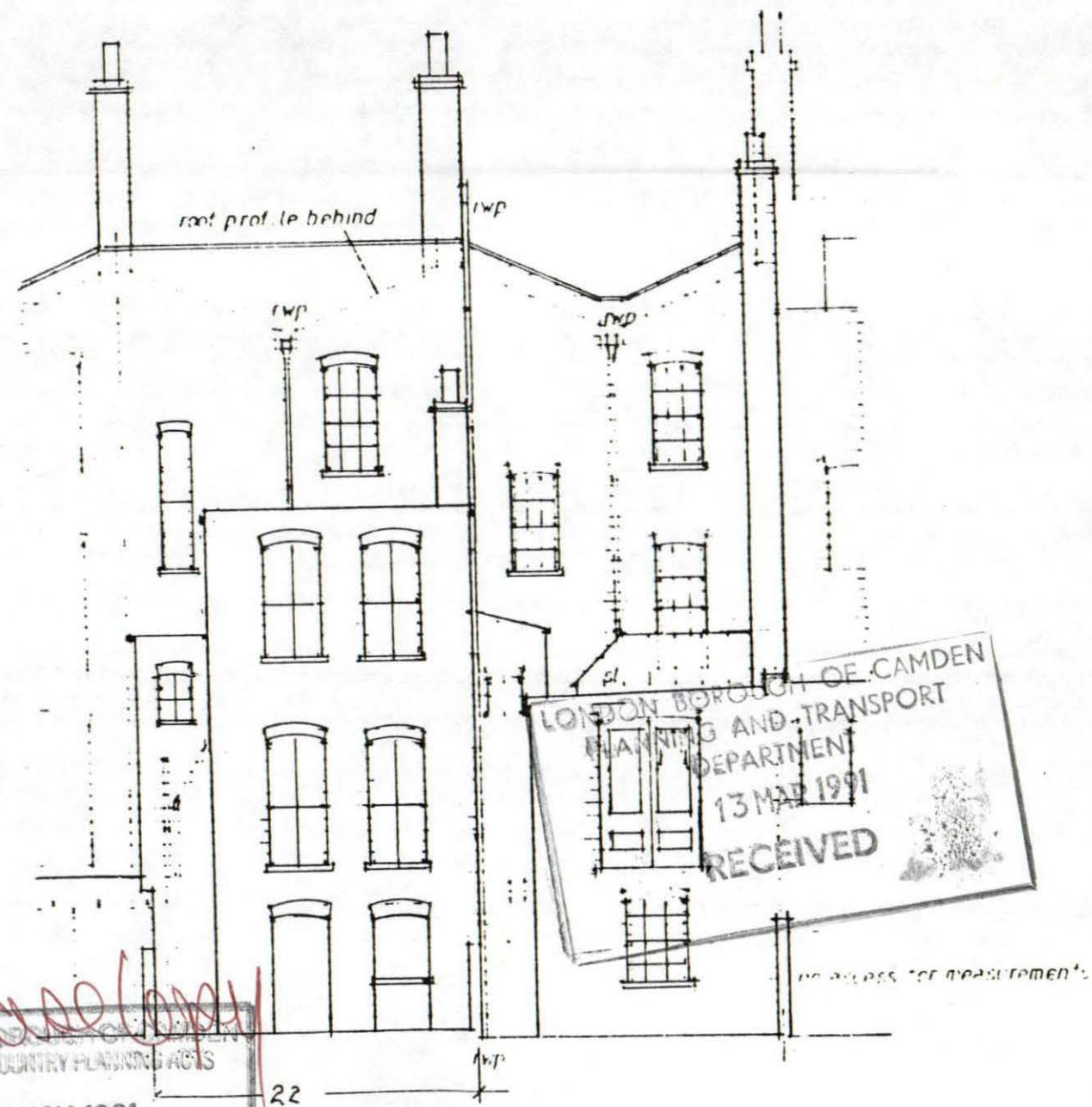
RESIDENTIAL.

SCALE 1:100 DATE Feb. 90

DRAWING NO. CMD 005 REVISION A.



FRONT ELEVATION

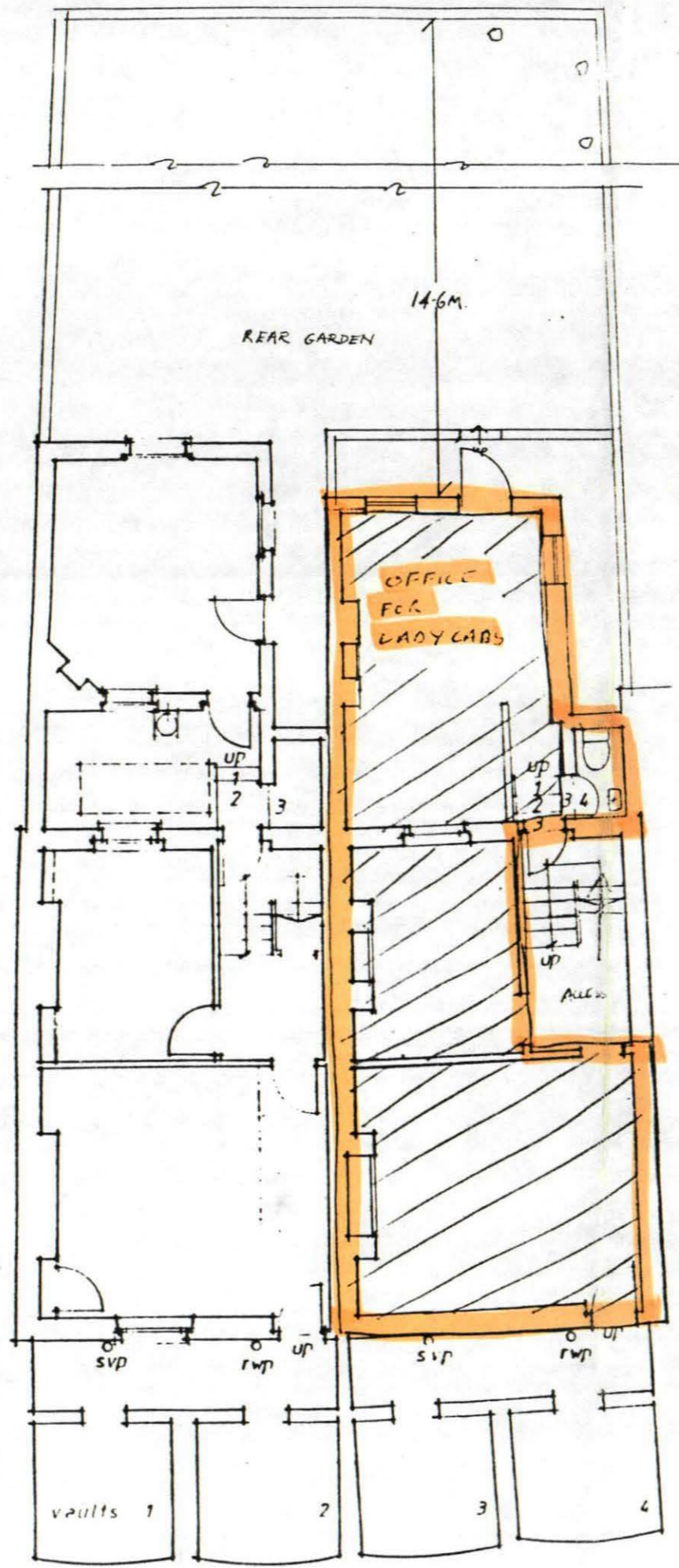


REAR ELEVATION

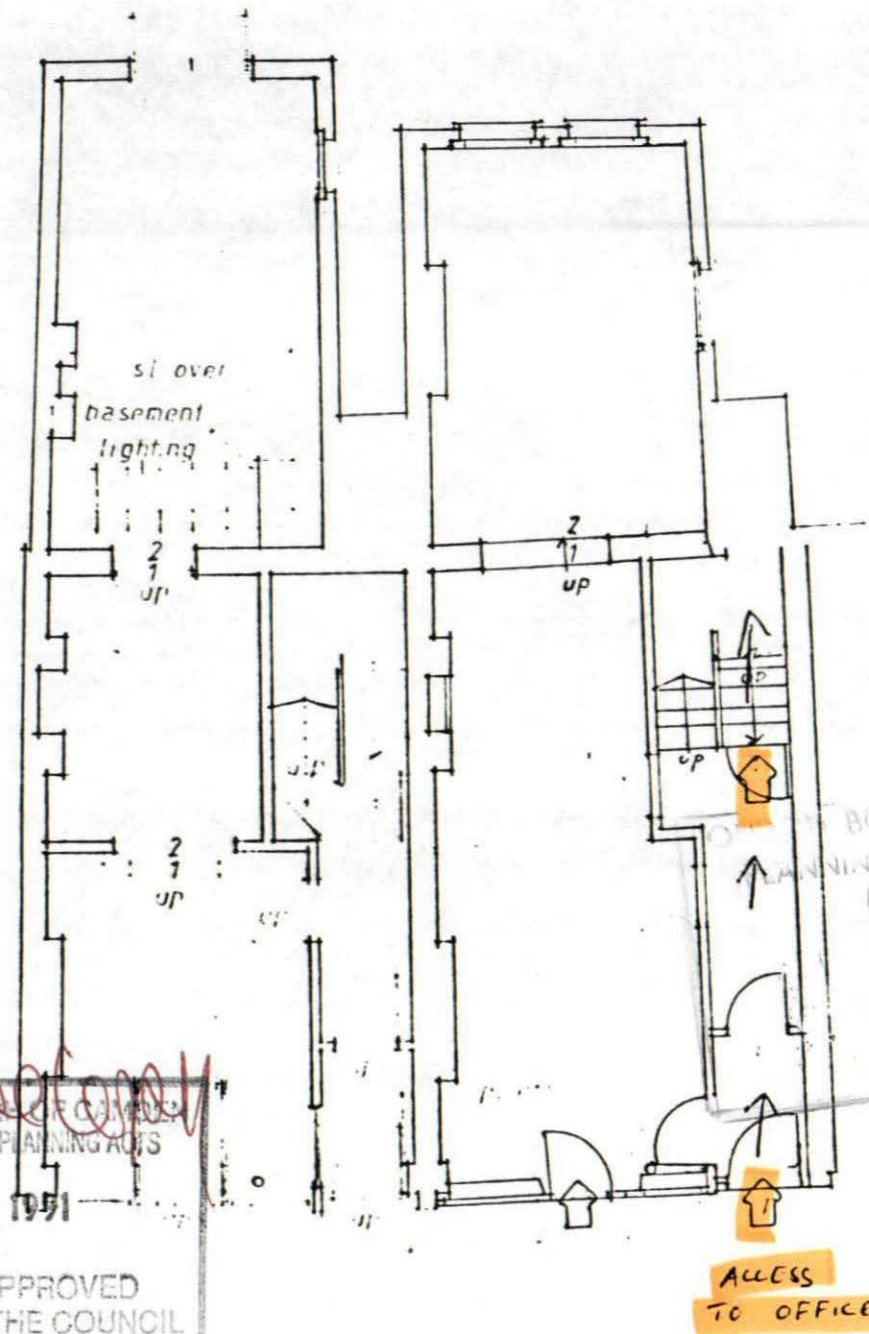
Canalcopy
 LONDON BOROUGH OF CAMDEN
 TOWN AND COUNTRY PLANNING ACTS
 14 NOV 1991
 PLANS APPROVED
 ON BEHALF OF THE COUNCIL

TP9100283

SCALE 1:100



BASEMENT



GROUND FLOOR

LONDON BOROUGH OF CAMDEN
TOWN AND COUNTRY PLANNING ACTS
14 NOV 1991
PLANS APPROVED
ON BEHALF OF THE COUNCIL

BOROUGH OF CAMDEN
PLANNING AND TRANSPORT
DEPARTMENT
13 MAR 1991
RECEIVED

C A M D E N R O A D
TP9100283

SCALE 1:100