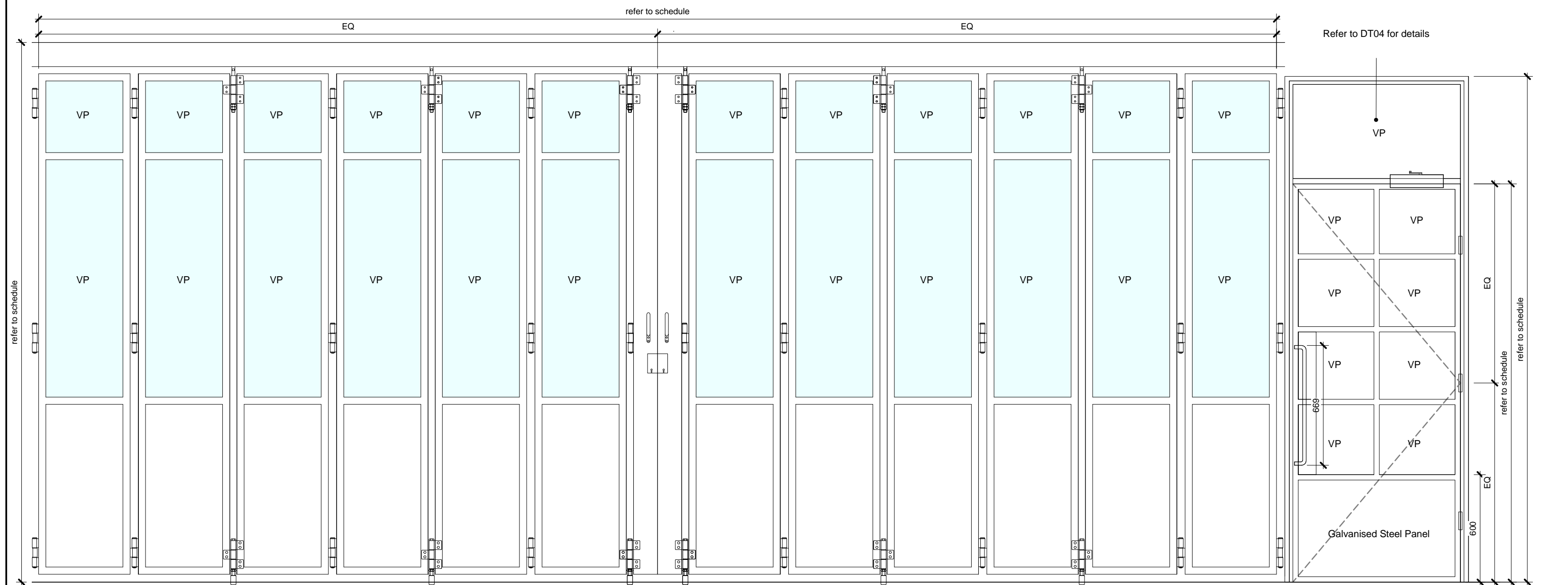


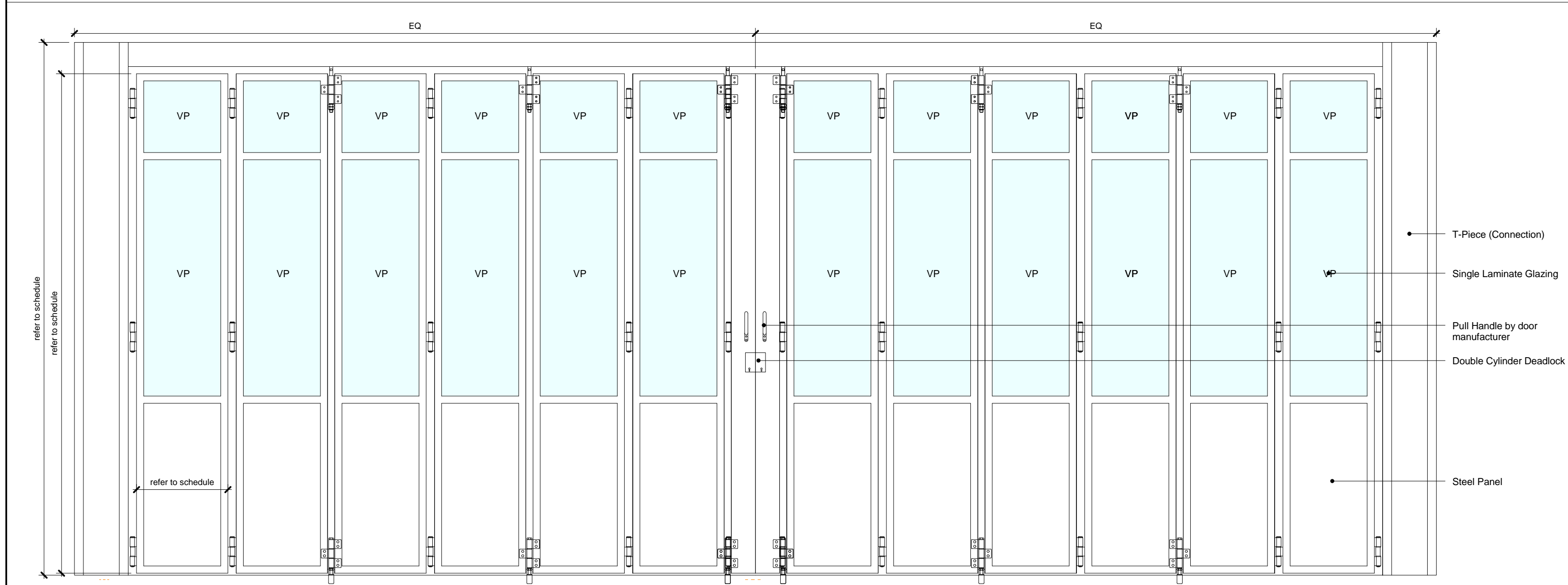
**NBS Reference: DT12 (L20/540)**  
 NBS Description: Third Floor Bi-Fold Door  
 Door Type: DT12  
 Opening Direction: Sliding/Folding  
 Ironmongery: Refer to schedule  
 Fire Rating: N/A  
 Security: To landlords requirements  
 Notes: To be coordinated with the glazing system on the Third Floor (refer to (21) series).  
 Ironmongery: Refer to subcontractors details. Internal handles and locking. Secondary access only.

**NBS Reference: DT13 (L20/486)**  
 NBS Description: Gas Meter Room Door  
 Door Type: DT13  
 Opening Direction: Outward  
 Ironmongery: Refer to Schedule  
 Fire Rating: Refer to schedule  
 Security: Secure Access for Maintenance Only  
 Notes: High and low level louvres required of 0.2 sqm each at 50% free area based on a room 2m x 2.5m (approx.). Refer to MEPH requirements.

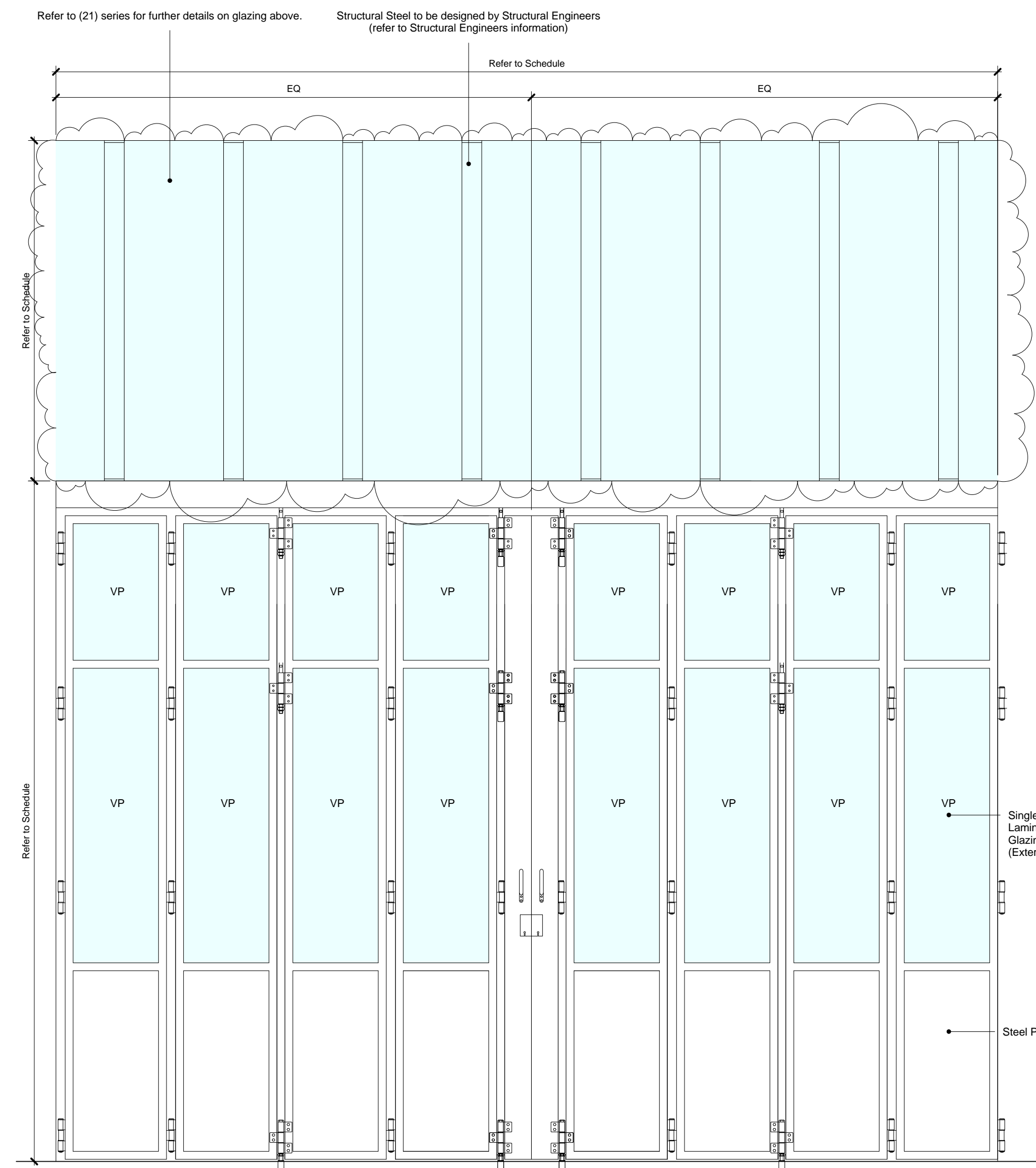


**NBS Reference: DT15 (L20/530A)**  
 NBS Description: Folding Retail Door (Entrance door to be included (DT04))  
 Door Type: DT15  
 Opening Direction: Sliding/Folding  
 Ironmongery: Refer to schedule  
 Fire Rating: N/A  
 Security: Cylinder Lock (External Doors to have lockable shootbolt)  
 Notes: To be coordinated with Landscape Levels.

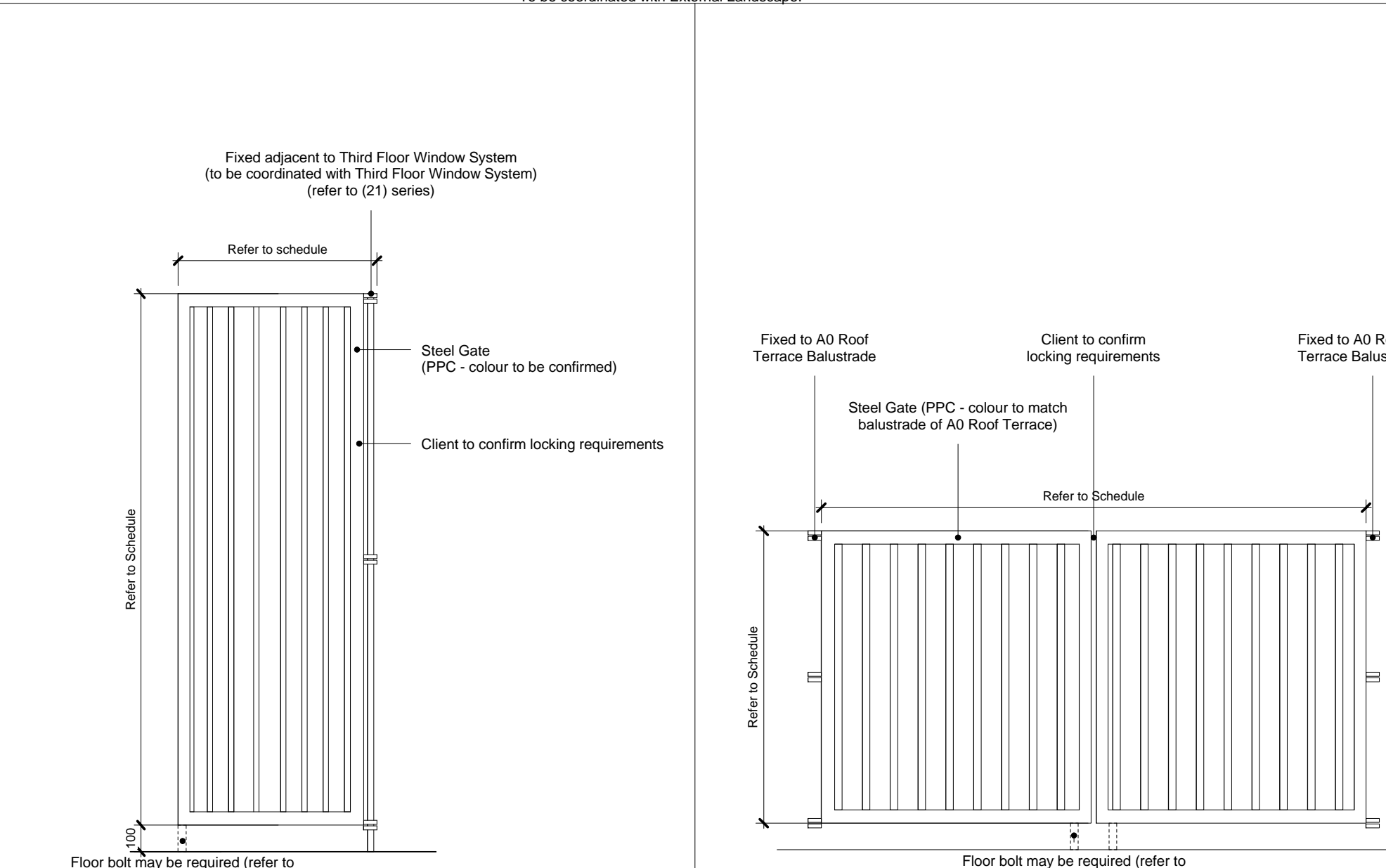
**NBS Reference: DT16 (L20/530B)**  
 NBS Description: Folding Retail Double Height  
 Door Type: DT16  
 Opening Direction: Sliding/Folding  
 Ironmongery: Refer to Schedule  
 Fire Rating: N/A  
 Security: Cylinder Deadlock + Floor bolt  
 Notes: Doors to be full height in perimeter/external locations. Refer to Door Schedule, AX\_(32)\_4010 + AX\_(32)\_4011. To be coordinated with External Landscape.



**NBS Reference: DT19 (L20/530C)**  
 NBS Description: Folding Retail Door (Full Height)  
 Door Type: DT19  
 Opening Direction: Sliding/Folding  
 Ironmongery: Refer to schedule  
 Fire Rating: N/A  
 Security: Cylinder Lock (External Doors to have lockable shootbolt)  
 Notes: To be coordinated with Landscape Levels.



**NBS Reference: DT17 (L20/620)**  
 NBS Description: Roof Access Gate  
 Door Type: DT17  
 Opening Direction: Inward  
 Ironmongery: Refer to Schedule  
 Fire Rating: N/A  
 Security: Access for Maintenance.  
 Notes: Refer to (21) series



**NBS Reference: DT18 (L20/621)**  
 NBS Description: Roof Terrace Gate (A0)  
 Door Type: DT18  
 Opening Direction: Inward  
 Ironmongery: Refer to Schedule  
 Fire Rating: N/A  
 Security: To landlords requirements  
 Notes: Planning Conditions to be met.

**KEY**

Refer to Door Schedule for dimensions and requirements.  
 Market Shutters to be tenant fit out (excluding those tagged within the (32) series).  
 Riser doors/access panels TBC  
 All service penetrations from risers to be fire stopped

VP Vision Panel  
 (S) Sign as required by schedule  
 Door Closer  
 Hinge  
 Hinge  
 Opening

**NOTE**  
 For individual door information: Refer to AX\_(32)\_0011-30 Door Schedule  
 Ironmongery: Set out as per door elevation

REV	DATE	DESCRIPTION
F03	28/10/16	Stage F - For Coordination
F02	07/10/16	Stage F - For Coordination
F01	22/07/16	Stage F - For Coordination

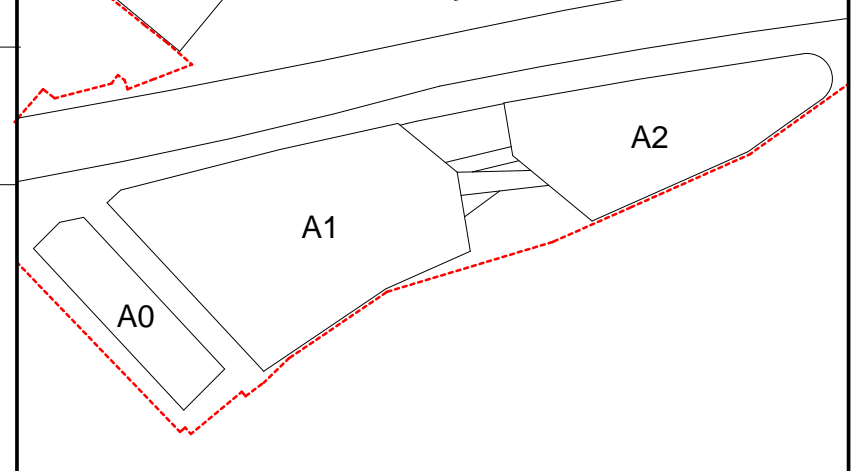
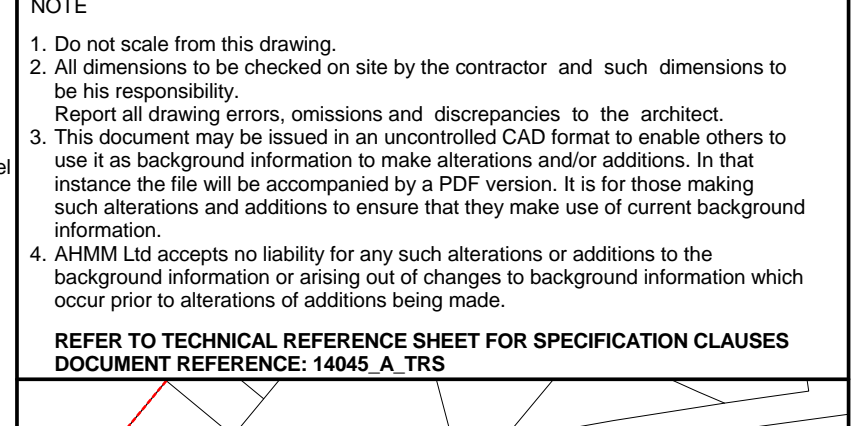
**CONSULTANTS**

CLIENT:	Stanley Sidings
CONTRACTOR:	Mace Group
STRUCTURAL ENGINEER:	Walsh Group
MECHANICAL ENGINEER:	AECOM
COST MANAGER:	Gardiner & Theobald
PROJECT MANAGER:	Gardiner & Theobald
ACOUSTIC CONSULTANT:	Arup
TRANSPORT CONSULTANT:	Arup
PLANNING CONSULTANT:	Gerald Eve
LANDSCAPE ARCHITECT:	Fabrik
CDM CO-ORDINATOR:	Gardiner & Theobald

**NOTE**

- Do not scale from this drawing.
- All dimensions to be checked on site by the contractor and such dimensions to be his responsibility. Report all drawing errors, omissions and discrepancies to the architect.
- This document may be issued in an uncontrolled CAD format to enable others to use it as background information to make alterations and/or additions. In that instance the file will be accompanied by a PDF version. It is for those making such alterations and additions to ensure that they make use of current background information.
- AHMM Ltd accepts no liability for any such alterations or additions to the background information or arising out of changes to background information which occur prior to alterations of additions being made.

**REFER TO TECHNICAL REFERENCE SHEET FOR SPECIFICATION CLAUSES**  
**DOCUMENT REFERENCE: 14045 A TRS**



**AL FORD HALL MONAGHAN MORRIS**  
 ARCHITECTS Ltd  
 5-23 OLD STREET, LONDON, EC1V 9HL  
 TEL 020 7251 5261 FAX 020 7251 5123 WEB WWW.AHMM.CO.UK

job title  
**CAMDEN LOCK VILLAGE**  
 drawing title / location  
**Door Elevation Matrix 2**

drawn by	checked	scale	status
MP	FG	1 : 20 @ A1	For Coordination
project	drawing no.	revision	
14045	AX_(32)_ 1021	F03	