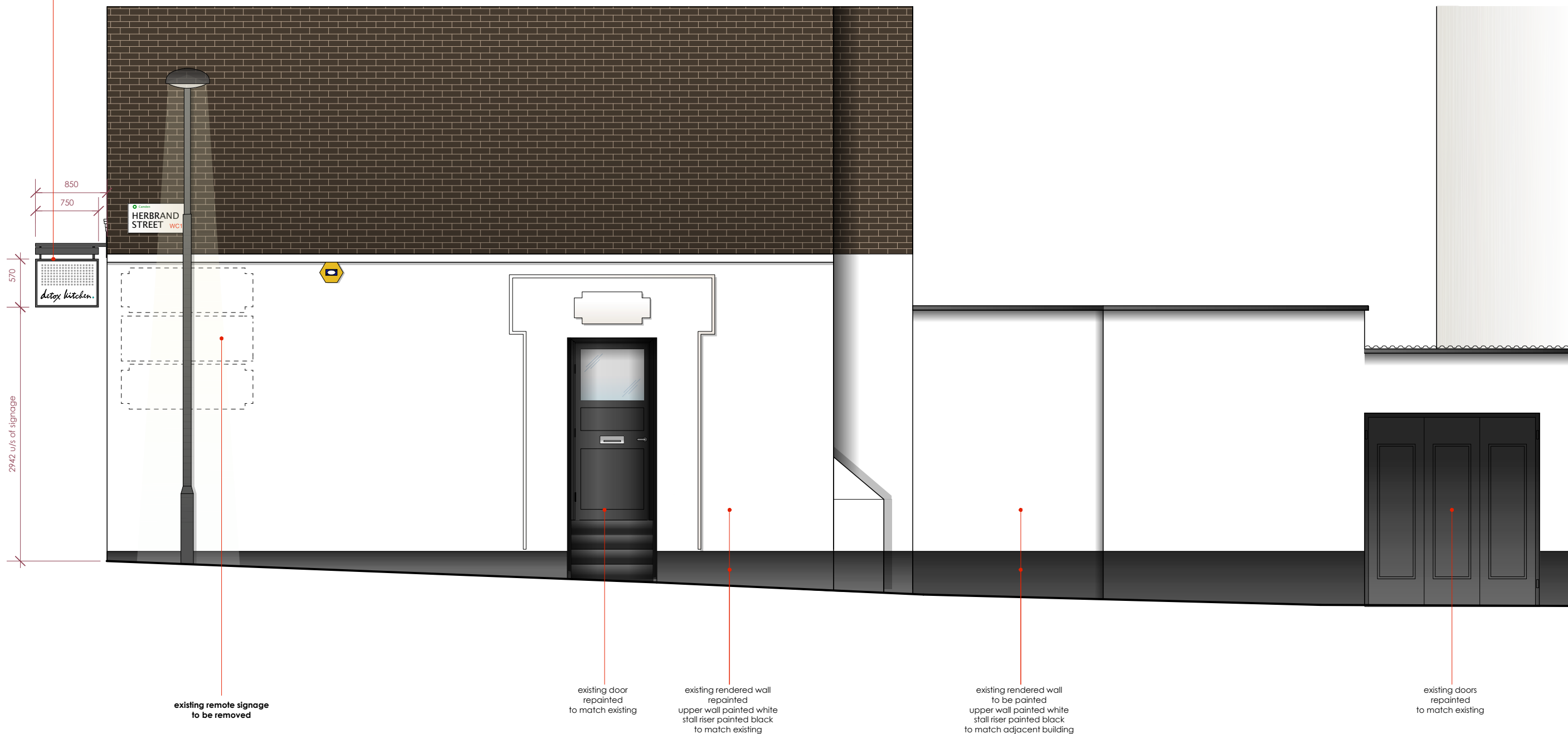


proposed sign B main shopfront projecting sign
 new double sided externally illuminated projecting sign
 750mm wide 570mm high 70d overall
 panel 30mm deep powder coated satin white
 with 20x20mm aluminium face mounted perimeter
 frame powder coated satin black.
 vinyl black dots pattern applied over
 individual aluminum letters 10mm thick directly bonded to face
 (text finished in black, dot finished in brand colour)
 2no over head light units, portland ref: 'microlux'
 with adjustable fixings on metal bracket all in black satin finish.



existing remote signage to be removed

existing door repainted to match existing

existing rendered wall repainted upper wall painted white stall riser painted black to match existing

existing rendered wall to be painted upper wall painted white stall riser painted black to match adjacent building

existing doors repainted to match existing

proposed
SIDE SHOPFRONT ELEVATION BB

Tannerdesign

Detox Kitchen London

proposed
side shopfront elevation

Revision A 6th February 2017

P12

Planning Drawings