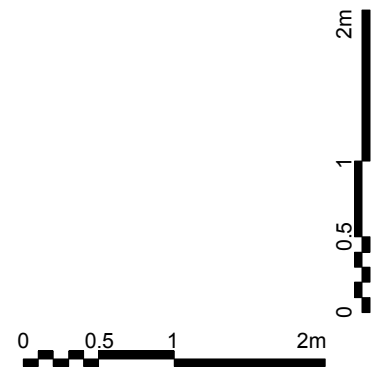
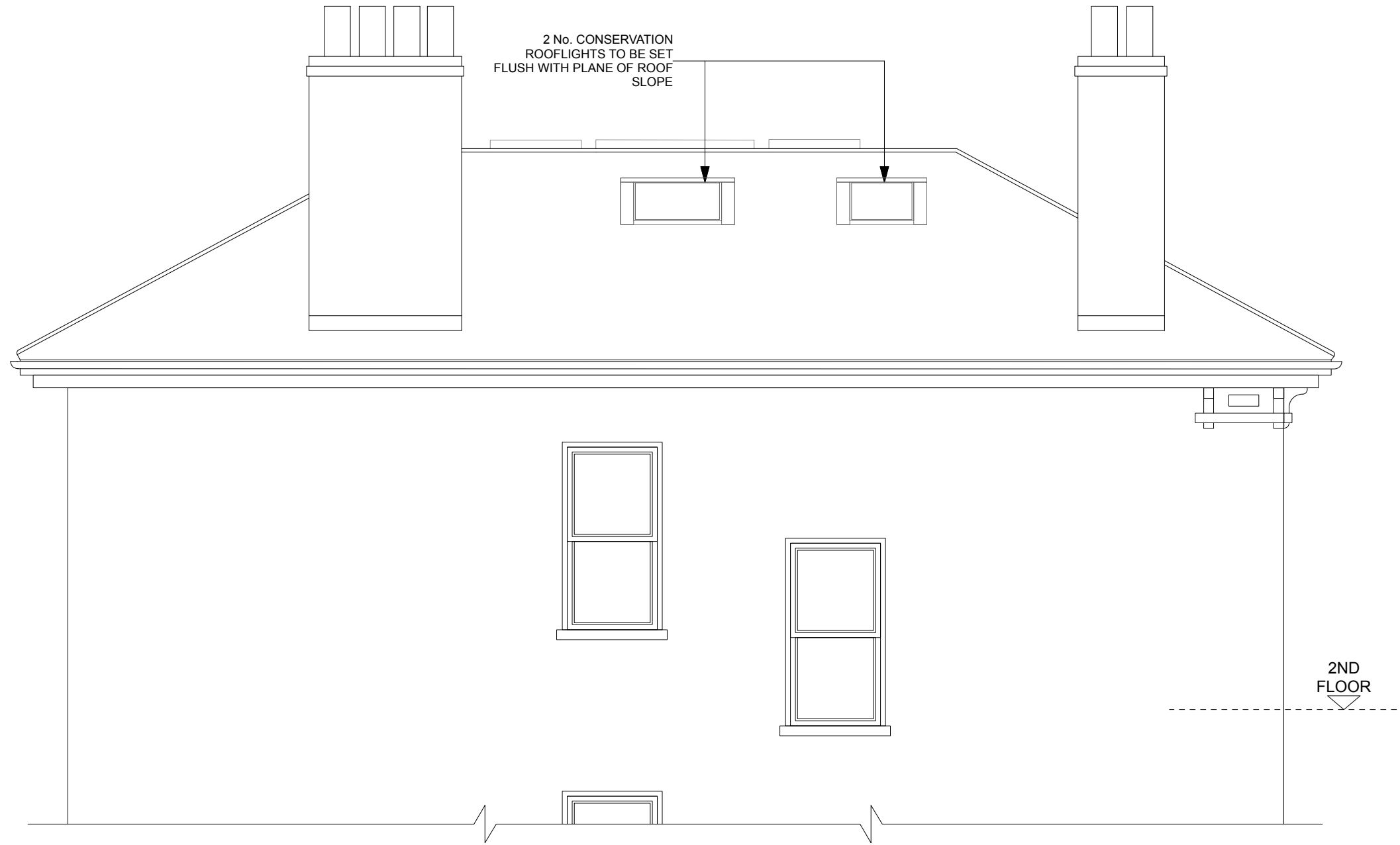


# 2 LAMBOLLE ROAD, NW3



REV A/AP/6FEB17: DRAWING UPDATED WITH AMENDMENTS  
MADE AFTER CONSULTATION WITH LB CAMDEN  
STATUS: ISSUED FOR PLANNING APPLICATION

**PROPOSED WEST ELEVATION 1:50 @ A3**

<b>JEFF KAHANE + ASSOCIATES</b> A R C H I T E C T S <small>136 Royal College Street London NW1 0TA Telephone 020 7238 0990 VAT number 523 0595 05 Jeff Kahane MA (Cantab) Dip Arch. RIBA</small>					<small>client</small> <b>JULIAN + ANTONIA GOULD</b>				
					<small>job</small> <b>2 LAMBOLLE ROAD, NW3</b>				
<small>drawing</small> <b>PROPOSED WEST ELEVATION</b>					<small>date</small> DEC 2016				
<small>drawn</small> AP					<small>scale</small> 1:50 @ A3				
<small>drawing no.</small> 757_PL_230					<small>rev.</small> A				