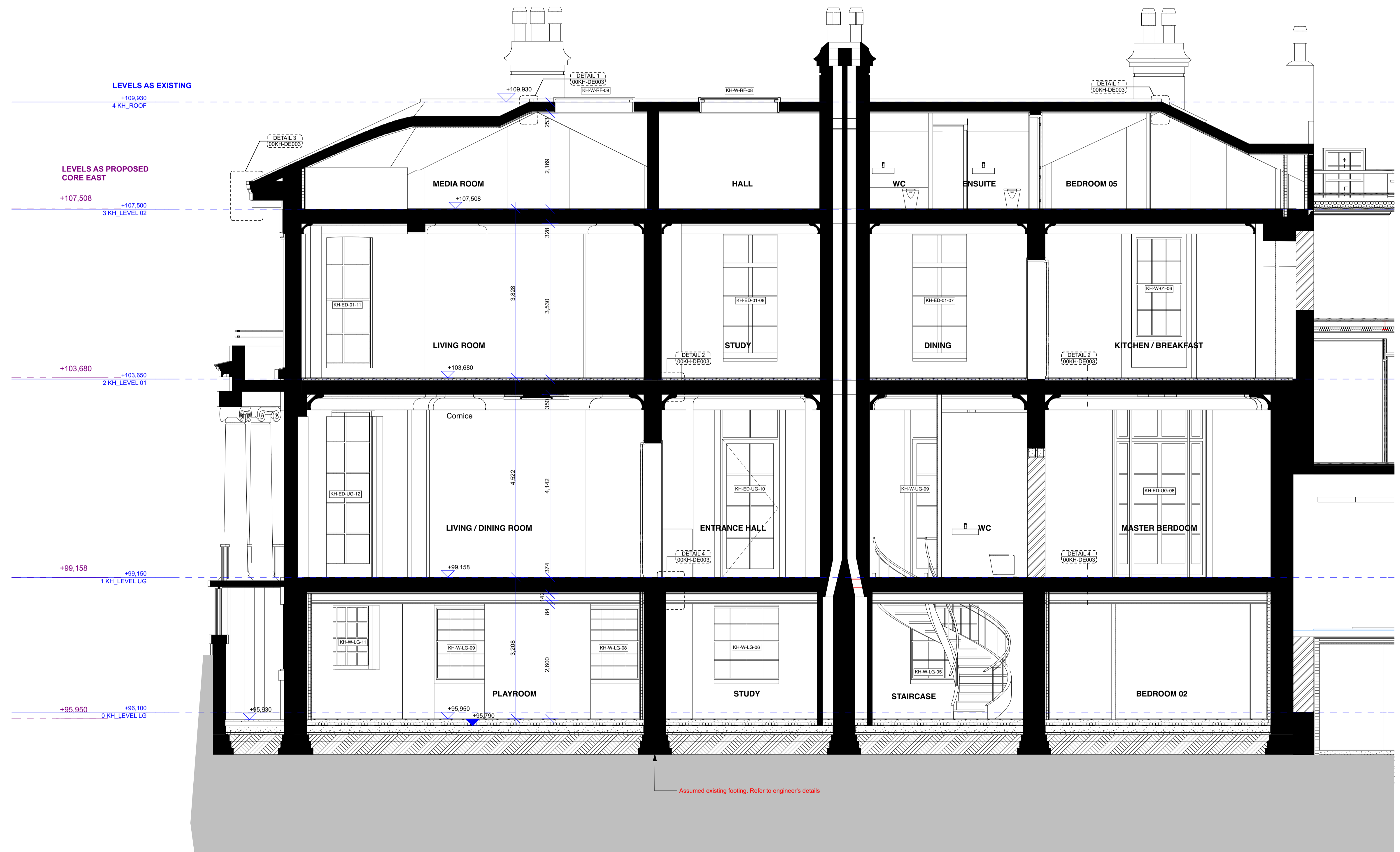
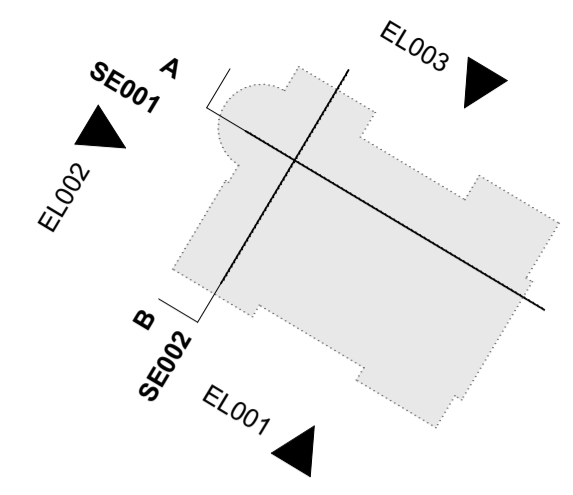


KEY PLAN
NOTE:



Assumed existing footing. Refer to engineer's details

FOR CONSTRUCTION

REVISION	DRN	CHKD	DATE
C1 Issued for Construction	KC/CC/ NV/FC	TW	17/01/2017



CLIENT
MOUNT ANVIL LTD

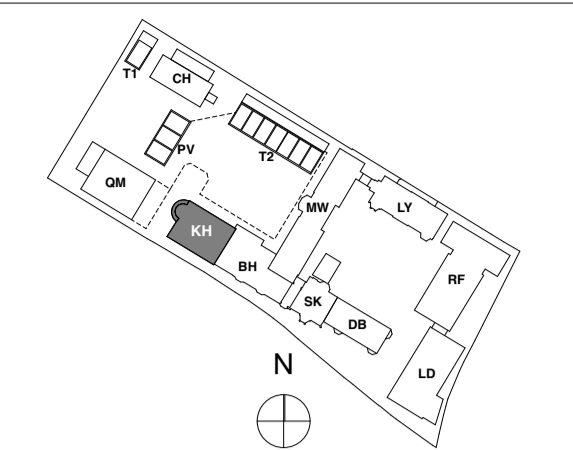
PROJECT
KIDDERPORE AVENUE

DRAWING
Kidderpore Hall
Section A-A As Proposed

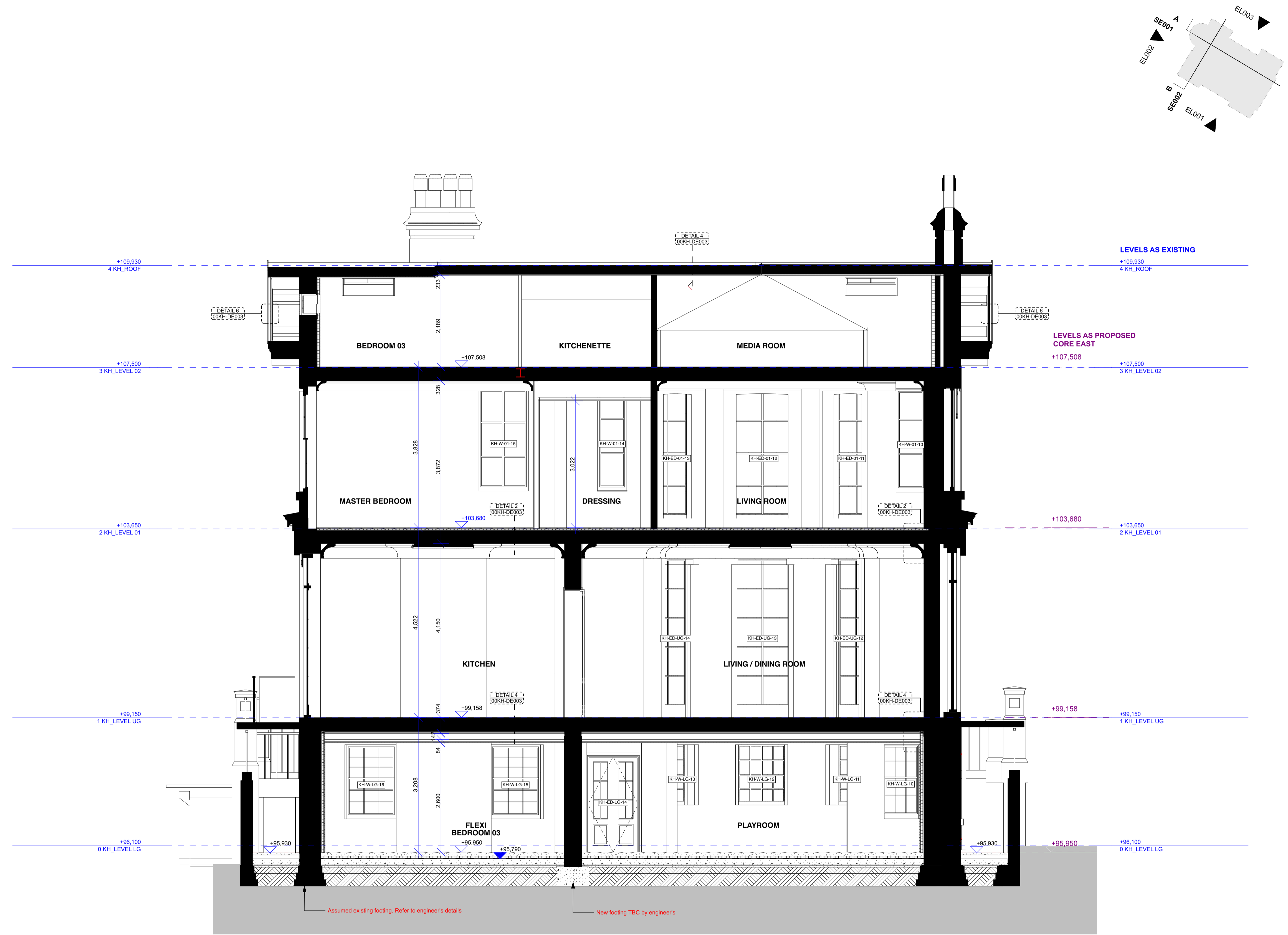
SCALE 1:50 @ A1 DATE
January 2017

DRAWING No. 15 230 DRAWN BY GC
9000-DRG-04KH-SE001 REV C1

A & Q PARTNERSHIP (LONDON) LTD
THE LUX BUILDING, 2-4 HOXTON SQUARE, LONDON N1 6 NU
Tel: 020 7613 2244 Fax: 020 7613 2642 Email: london@aqp.co.uk
ARCHITECTURE DESIGN MASTERPLANNING INTERIORS



KEY PLAN
NOTE:



FOR CONSTRUCTION

REVISION	DRN	CHKD	DATE
C1 Issued for Construction	KC/CC/ NV/FC	TW	17/01/2017



CLIENT
MOUNT ANVIL LTD

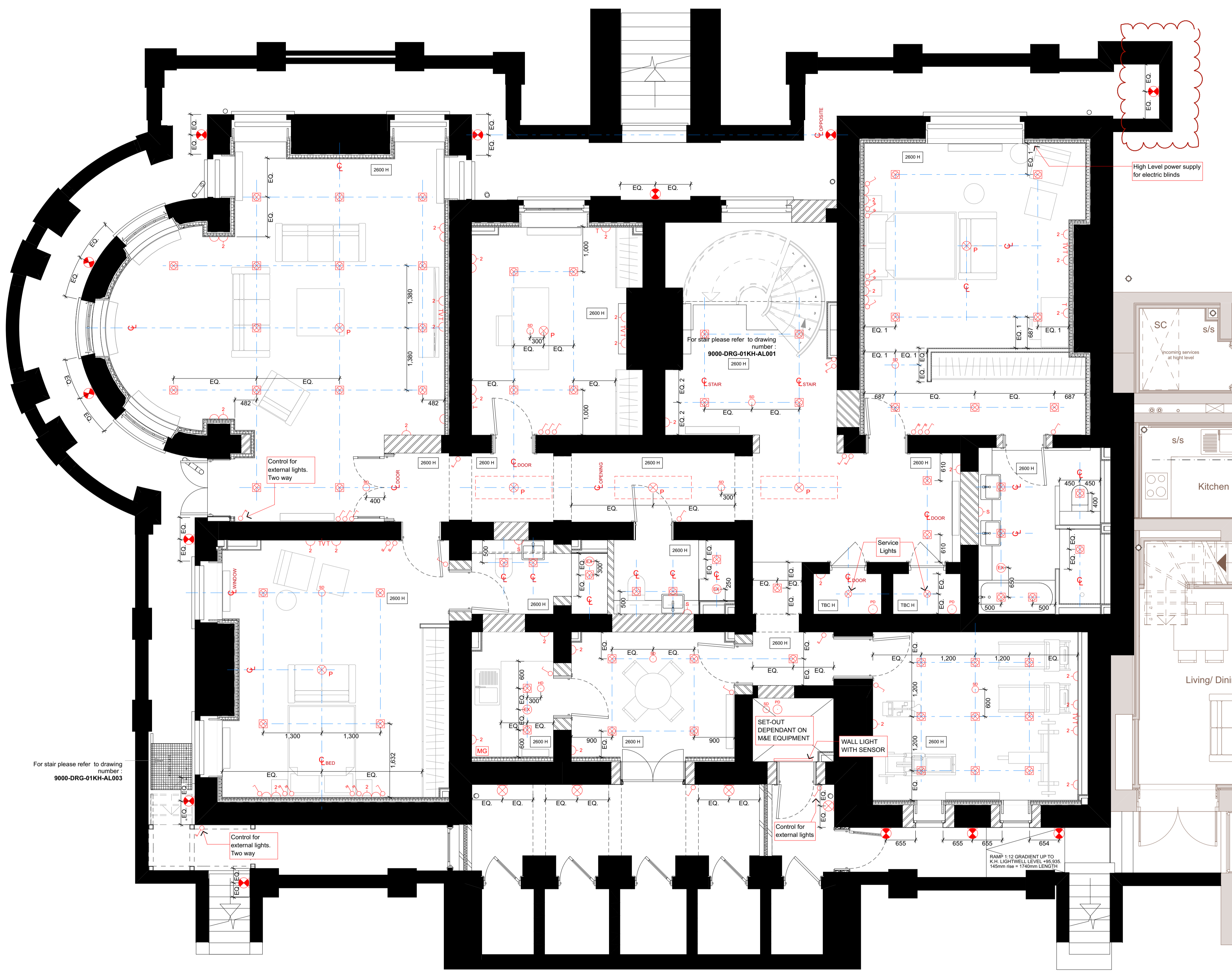
PROJECT
KIDDERPORE AVENUE

DRAWING
Kidderpore Hall
Section B-B As Proposed

SCALE 1:50 @ A1 DATE
January 2017

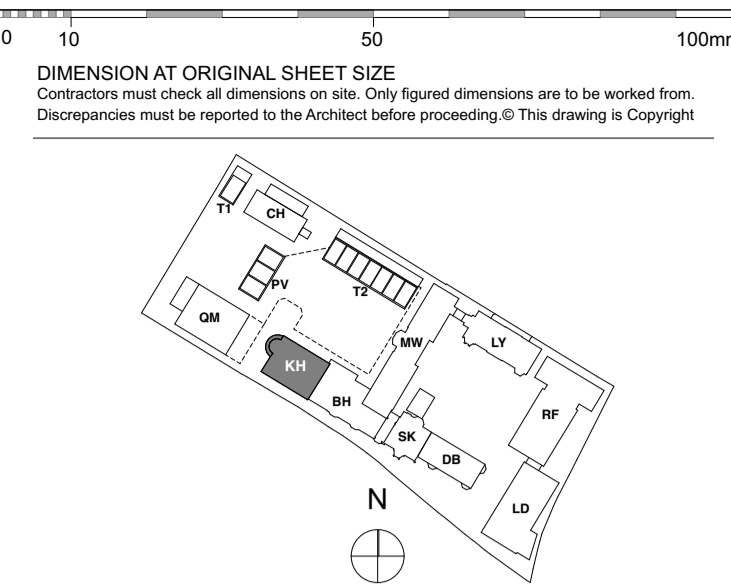
DRAWING No. 15 230 DRAWN BY GC
9000-DRG-04KH-SE002 REV C1

A & Q PARTNERSHIP (LONDON) LTD
THE LUX BUILDING, 2-4 HOXTON SQUARE, LONDON N1 6 NU
Tel: 020 7613 2244 Fax: 020 7613 2642 Email: london@aqp.co.uk
ARCHITECTURE DESIGN MASTERPLANNING INTERIORS



GENERAL NOTE:
Master Ensuite Wardrobes: Internal fittings include rails, lighting, shelves and drawers.
Secondary Bedrooms: Hanging rails and shelving
 Double downlights to enclosed kitchens and Walk-in wardrobes only

NOTE
 To be read in conjunction with MKP Drawings
 Refer to MKP drawings for Utility cupboard, kitchen and electrical layouts.
 Wiring for pendant lights in Living, Dining and Master Bedroom.
 Wiring for speaker system in Living, Dining, kitchen and Master Bedroom, for future installation of speakers by customer.
 Please provide wiring for electrical Blinds



LEGEND

Switch	PIR presence detector
2 way switch	Emergency Light
3 way switch	Fire Detector
Switch dimmer	Fire Detector Sounder base & flashing beacon
Pendant light	Manual Fire alarm call point
Modular Luminare	Thermostat
Linear Luminare	PopUp Socket and USB Port
Single directional downlights	Recessed uplighter
Double directional downlights	
Wall light, internal	
Recessed low energy LED downlighter	
LED strip lighting to wardrobes & under wall units	
Wall light, external	
Recessed wall lights at floor level	
Wall light with sensor	
Double socket	
Shaver socket	
Multi-gang switch for lamp circuit	
Multi-gang switch for kitchen appliances	
TV media plate. Refer to M&E specification	
BT phone & data point	
Floor recessed outlet	
Smoke detector	
Heat detector	
Extractor	
Air supply in	
Linear slot diffuser for supply & extract air	

Ceiling Info.

Comice or Ceiling ornament	Existing Cornice
Curtain Recess	Comice segment to be removed
	Proposed Cornice to match existing
	New Cornice

FOR CONSTRUCTION

REVISION	DRN	CHKD	DATE
C1 Issued for Construction	NV	TW	17/01/2017
C2 Amended as Clouded	NV	KC	03/02/2017



CLIENT
 MOUNT ANVIL LTD

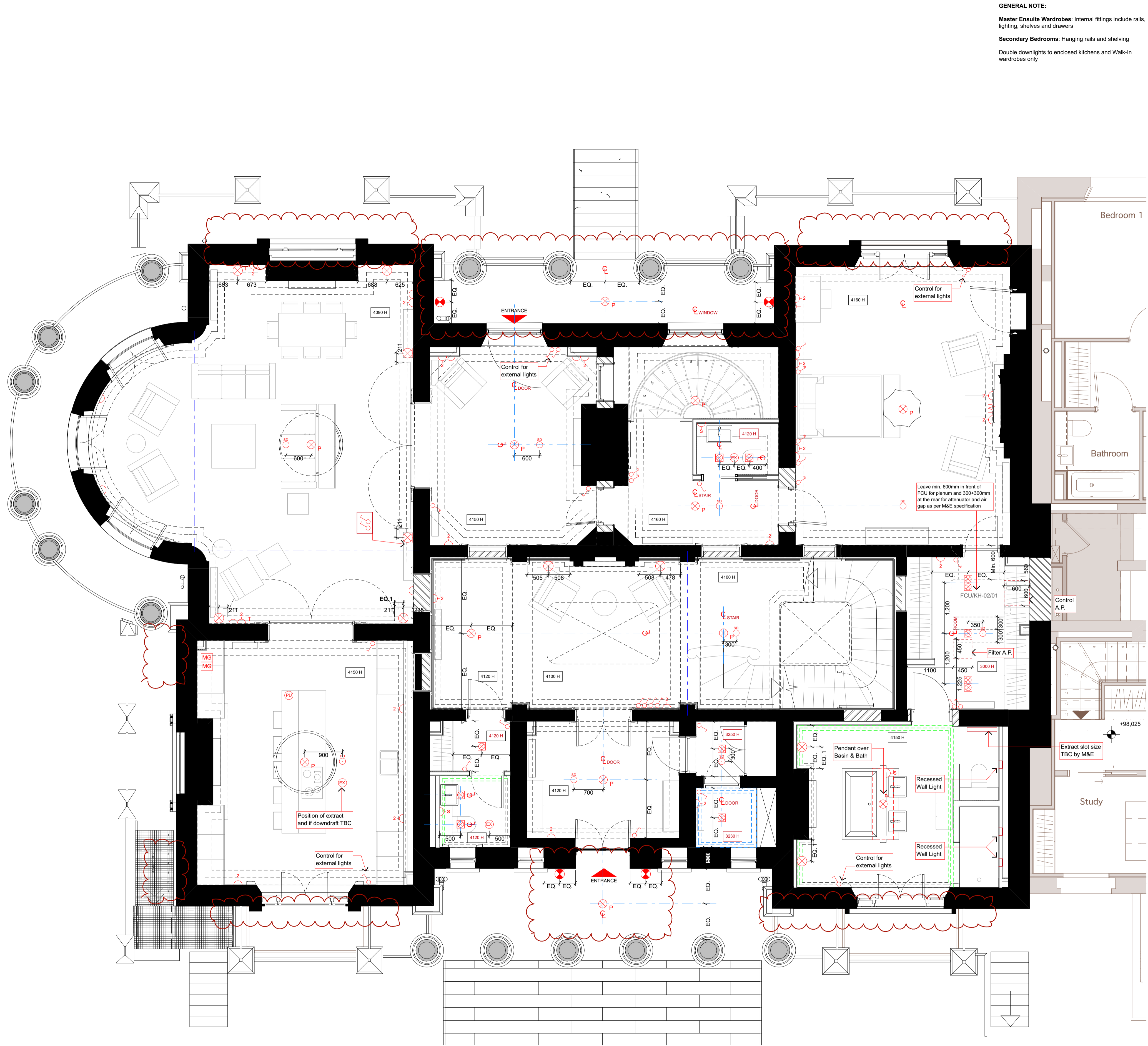
PROJECT
 KIDDERPORE AVENUE

DRAWING
 Kidderpore Hall
 Level LG RCP

SCALE 1:50 @ A1 DATE February 2017

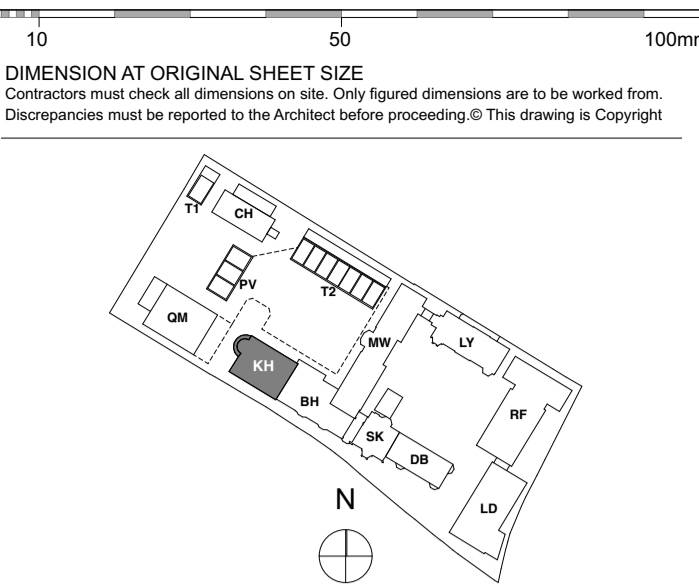
DRAWING No. 9000-DRG-23KH-LG030 DRAWN BY NV REV C2

A & Q PARTNERSHIP (LONDON) LTD
 THE LUX BUILDING, 2-4 HOXTON SQUARE, LONDON N1 6 NU
 Tel: 020 7613 2244 Fax: 020 7613 2642 Email: london@aqp.co.uk
 ARCHITECTURE DESIGN MASTERPLANNING INTERIORS



GENERAL NOTE:
Master Ensuite Wardrobes: Internal fittings include rails, lighting, shelves and drawers.
Secondary Bedrooms: Hanging rails and shelving
 Double downlights to enclosed kitchens and Walk-in wardrobes only

NOTE
 To be read in conjunction with MKP Drawings
 Refer to MKP drawings for Utility cupboard, kitchen and electrical layouts.
 Wiring for pendant lights in Living, Dining and Master Bedroom.
 Wiring for speaker system in Living, Dining, kitchen and Master Bedroom, for future installation of speakers by customer.
 Please provide wiring for electrical Blinds



LEGEND

Switch	PIR presence detector
2 way switch	Emergency Light
3 way switch	Fire Detector
Switch dimmer	Fire Detector Sounder base & flashing beacon
Pendant light	Manual Fire alarm call point
Modular Luminaire	Thermostat
Linear Luminaire	PopUp Socket and USB Port
Single directional downlights	Recessed uplighter
Double directional downlights	
Wall light, internal	
Recessed low energy LED downlighter	
LED strip lighting to wardrobes & under wall units	
Wall light, external	
Recessed wall lights at floor level	
Wall light with sensor	
Double socket	
Shaver socket	
Video entryphone and intercom	
TV media plate. Refer to M&E specification	
BT phone & data point	
Floor recessed outlet	
Smoke detector	
Heat detector	
Comice or Ceiling ornament	
Curtain Recess	
Existing Cornice	
Comice segment to be removed	
Proposed Cornice to match existing	
New Cornice	
Extractor	
Air supply in	
Linear slot diffuser for supply & extract air	

FOR CONSTRUCTION

REVISION	DRN	CHKD	DATE
C1 Issued for Construction	NV	TW	17/01/2017
C2 Amended as Clouded	NV	KC	03/02/2017



CLIENT
 MOUNT ANVIL LTD

PROJECT
 KIDDERPORE AVENUE

DRAWING
 Kidderpore Hall
 Level UG RCP

SCALE 1:50 @ A1 DATE February 2017

DRAWING No. 15 230 DRAWN BY NV
 9000-DRG-23KH-UG030 REV C2

A & Q PARTNERSHIP (LONDON) LTD
 THE LUX BUILDING, 2-4 HOXTON SQUARE, LONDON N1 6 NU
 Tel: 020 7613 2244 Fax: 020 7613 2642 Email: london@aqp.co.uk
 ARCHITECTURE DESIGN MASTERPLANNING INTERIORS

GENERAL NOTE:

Master Ensuite Wardrobes: Internal fittings include rails, lighting, shelves and drawers.

Secondary Bedrooms: Hanging rails and shelving
Double downlights to enclosed kitchens and Walk-in wardrobes only

NOTE

To be read in conjunction with MKP Drawings

Refer to MKP drawings for Utility cupboard, kitchen and electrical layouts.

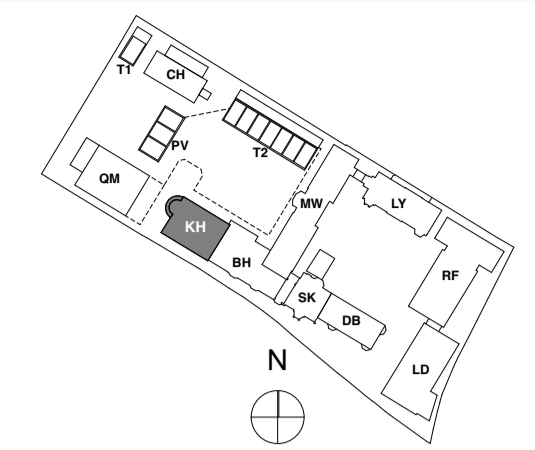
Wiring for pendant lights in Living, Dining and Master Bedroom.

Wiring for speaker system in Living, Dining, kitchen and Master Bedroom, for future installation of speakers by customer.

Please provide wiring for electrical Blinds

0 10 50 100mm

DIMENSION AT ORIGINAL SHEET SIZE
Contractors must check all dimensions on site. Only figured dimensions are to be worked from. Discrepancies must be reported to the Architect before proceeding. © This drawing is Copyright



KEY PLAN

NOTE:

LEGEND	
	Switch
	2 way switch
	3 way switch
	Switch dimmer
	Pendant light
	Modular luminaire
	Linear Luminaire
	Single directional downlights
	Double directional downlights
	Wall light, internal
	Recessed low energy LED downlighter
	LED strip lighting to wardrobe & under wall units
	Wall light, external
	Recessed wall lights at floor level
	Wall light with sensor
	Double socket
	Samp switch sockets for lamp circuit
	Multi-gang switch for kitchen appliances
	MG
	Shaver socket
	Video entraphone and intercom
	TV media plate. Refer to M&E specification
	BT phone & data point
	Floor recessed outlet
	Smoke detector
	Heat detector
	PIR presence detector
	Emergency Light
	Fire Detector
	Fire Detector Sounder base & flashing beacon
	Manual Fire alarm call point
	Thermostat
	PopUp Socket and USB Port
	Recessed uplighter
Ceiling Info.	
	Cornice or Ceiling ornament
	Curtain Recess
	Existing Cornice
	Cornice segment to be removed
	Proposed Cornice to match existing
	New Cornice
	Extractor
	Air supply in
	Linear slot diffuser for supply & extract air

FOR CONSTRUCTION

REVISION	DRN	CHKD	DATE
C1 Issued for Construction	NV	TW	17/01/2017



CLIENT
MOUNT ANVIL LTD

PROJECT
KIDDERPORE AVENUE

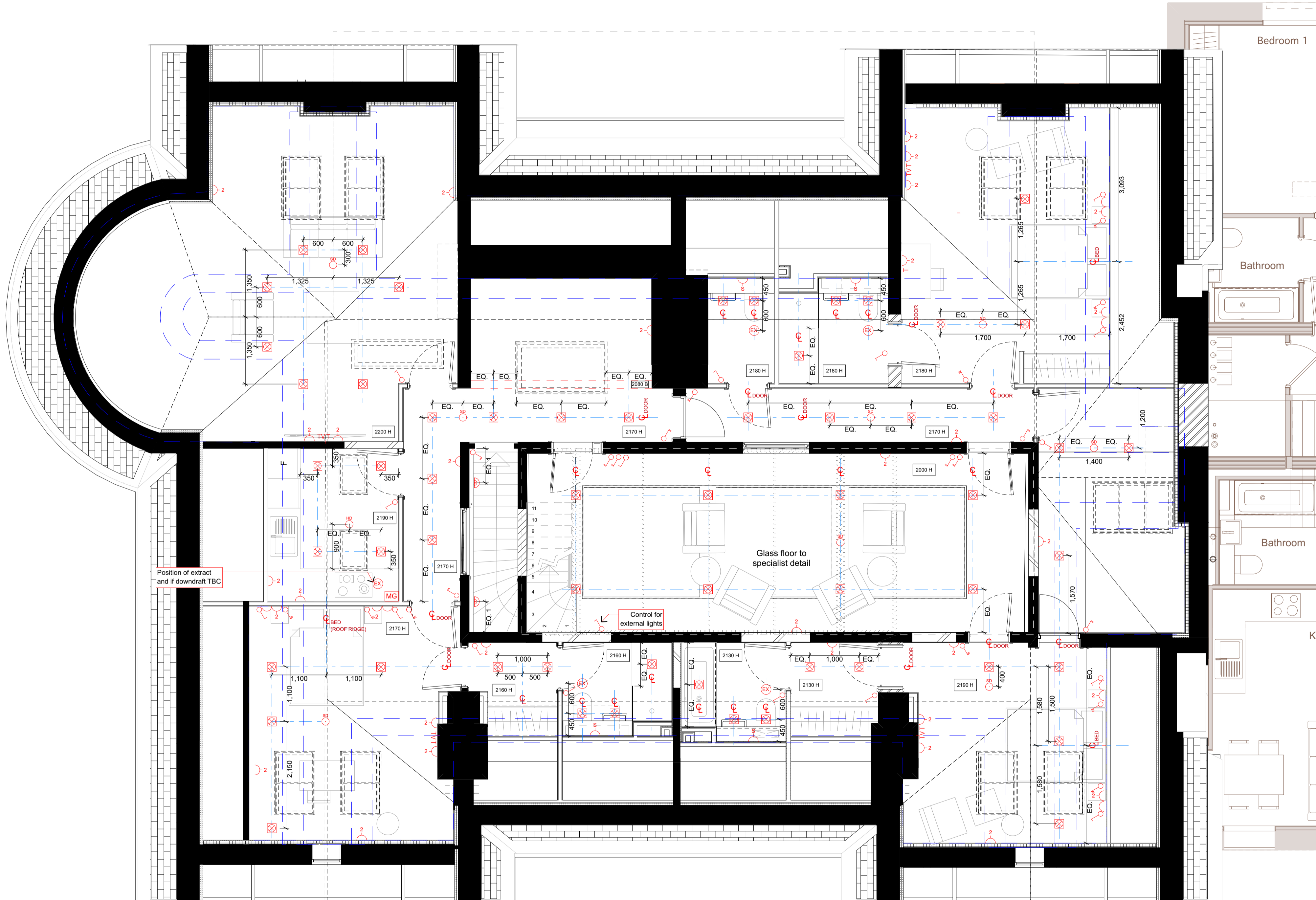
SCALE 1:50 @ A1 DATE January 2017

DRAWING No. 15 230 DRAWN BY NV
9000-DRG-23KH-01030 REV C1

A & Q PARTNERSHIP (LONDON) LTD
THE LUX BUILDING, 2-4 HOXTON SQUARE, LONDON N1 6 NU
Tel: 020 7613 2244 Fax: 020 7613 2644 Email: london@aqp.co.uk
ARCHITECTURE DESIGN MASTERPLANNING INTERIORS

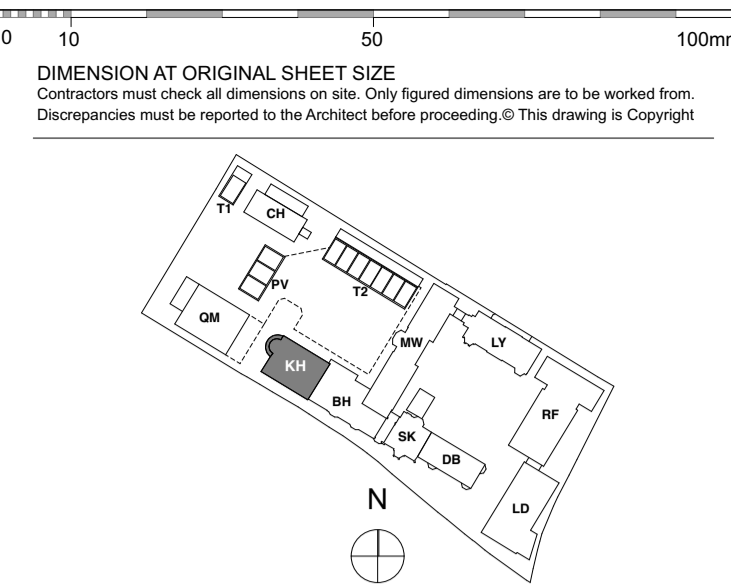


Leave min. 600mm in front of FCU for plenum and 300x300mm at the rear for attenuator and air gap as per M&E specification



GENERAL NOTE:
Master Ensuite Wardrobes: Internal fittings include rails, lighting, shelves and drawers.
Secondary Bedrooms: Hanging rails and shelving.
 Double downlights to enclosed kitchens and Walk-in wardrobes only.

NOTE:
 To be read in conjunction with MKP Drawings
 Refer to MKP drawings for Utility cupboard, kitchen and electrical layouts.
 Wiring for pendant lights in Living, Dining and Master Bedroom.
 Wiring for speaker system in Living, Dining, kitchen and Master Bedroom, for future installation of speakers by customer.
 Please provide wiring for electrical Blinds



LEGEND

Switch	PIR presence detector
2 way switch	Emergency Light
3 way switch	Fire Detector
Switch dimmer	Fire Detector Sounder base & flashing beacon
Pendant light	Manual Fire alarm call point
Modular luminaire	Thermostat
Linear Luminaire	PopUp Socket and USB Port
Single directional downlights	Recessed uplighter
Double directional downlights	
Wall light, internal	
Recessed low energy LED downlighter	
LED strip lighting to wardrobes & under wall units	
Wall light, external	
Recessed wall lights at floor level	
Wall light with sensor	
Double socket	
Shaver socket	
Video entryphone and intercom	
TV media plate. Refer to M&E specification	
BT phone & data point	
Floor recessed outlet	
Smoke detector	
Heat detector	
Comice or Ceiling ornament	
Curtain Recess	
Existing Comice	
Comice segment to be removed	
Proposed Comice to match existing	
New Comice	
Extractor	
Air supply in	
Linear slot diffuser for supply & extract air	

FOR CONSTRUCTION

REVISION	DRN	CHKD	DATE
C1 Issued for Construction	NV	TW	17/01/2017



CLIENT
 MOUNT ANVIL LTD

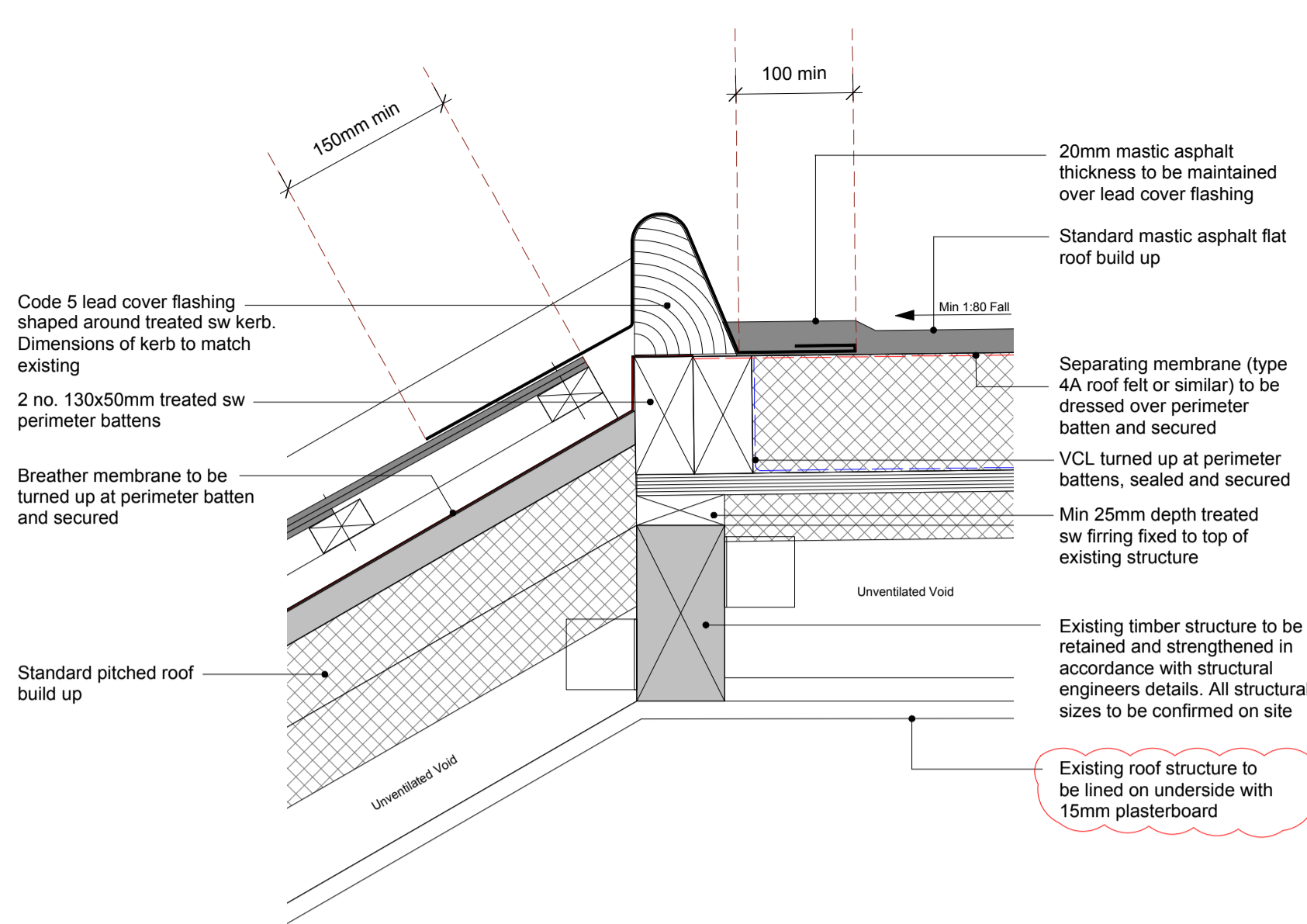
PROJECT
 KIDDERPORE AVENUE

DRAWING
 Kidderpore Hall
 Level 02 RCP

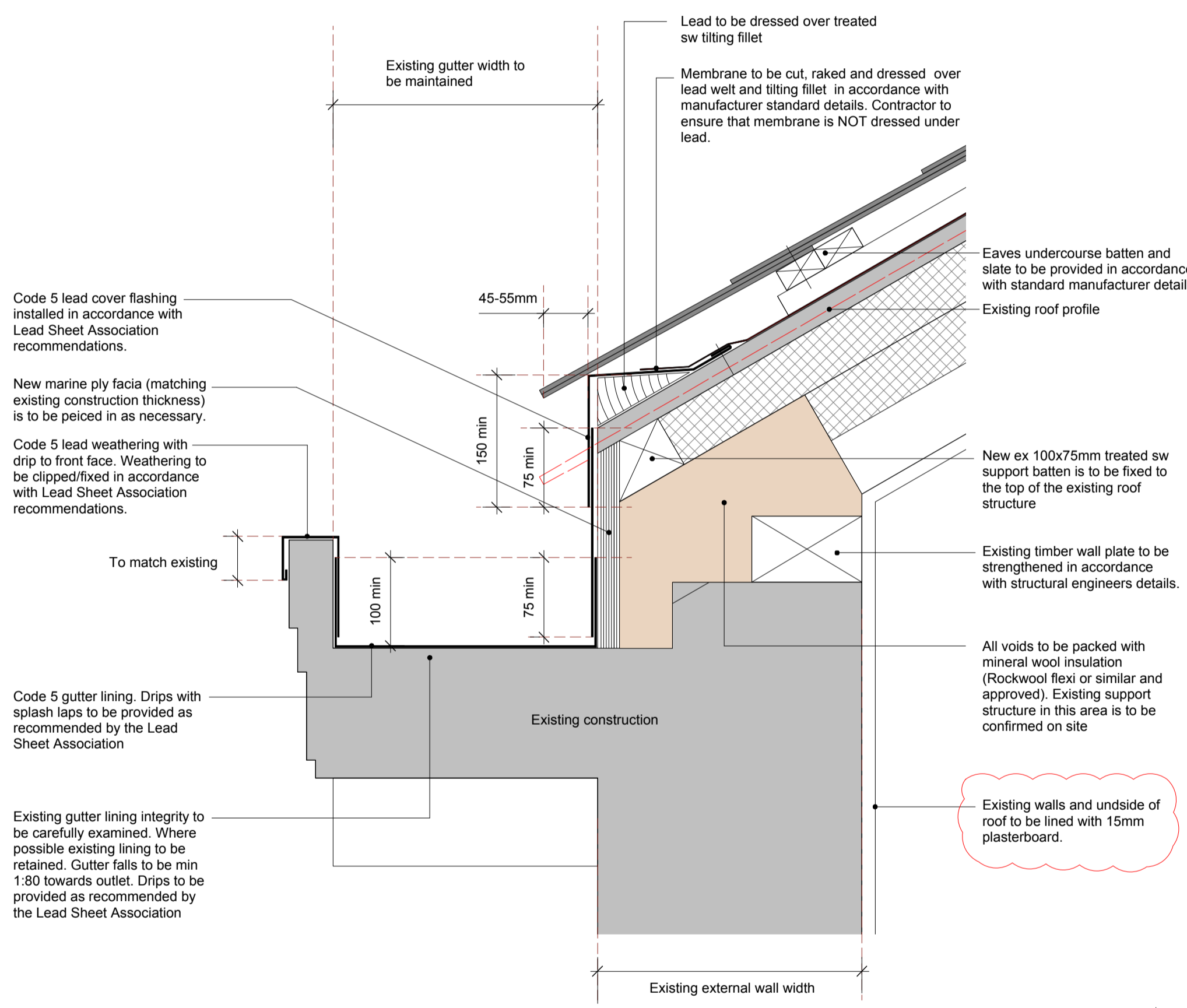
SCALE 1:50 @ A1 DATE January 2017

DRAWING No. 15 230 DRAWN BY NV
 9000-DRG-23KH-02030 REV C1

A & Q PARTNERSHIP (LONDON) LTD
 THE LUX BUILDING, 2-4 HOXTON SQUARE, LONDON N1 6 NU
 Tel: 020 7613 2244 Fax: 020 7613 2642 Email: london@aqp.co.uk
 ARCHITECTURE DESIGN MASTERPLANNING INTERIORS



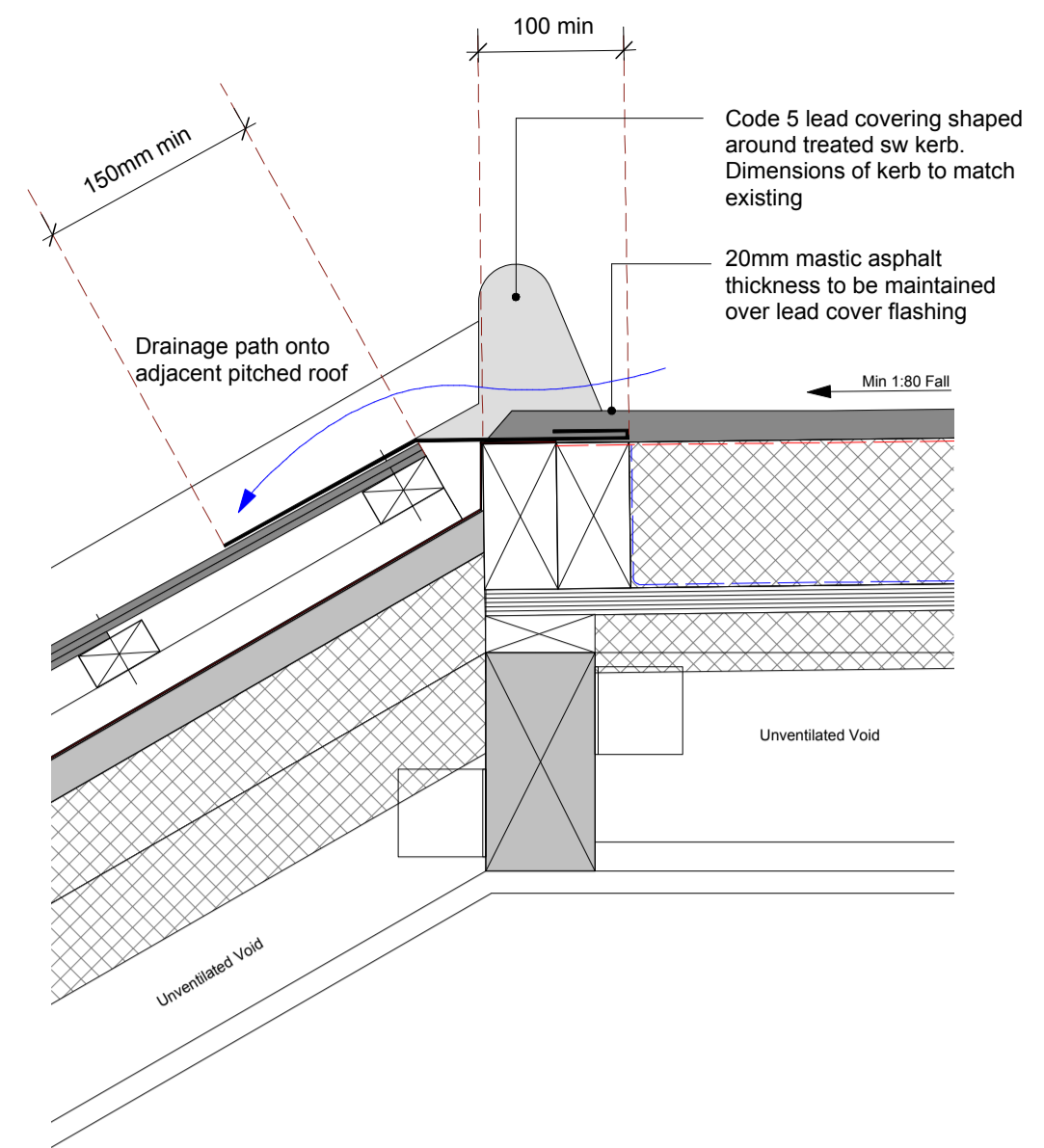
Detail 1: Typical Tile Pitched Roof / Mastic Asphalt Flat Roof Junction (1:5 @ A1)



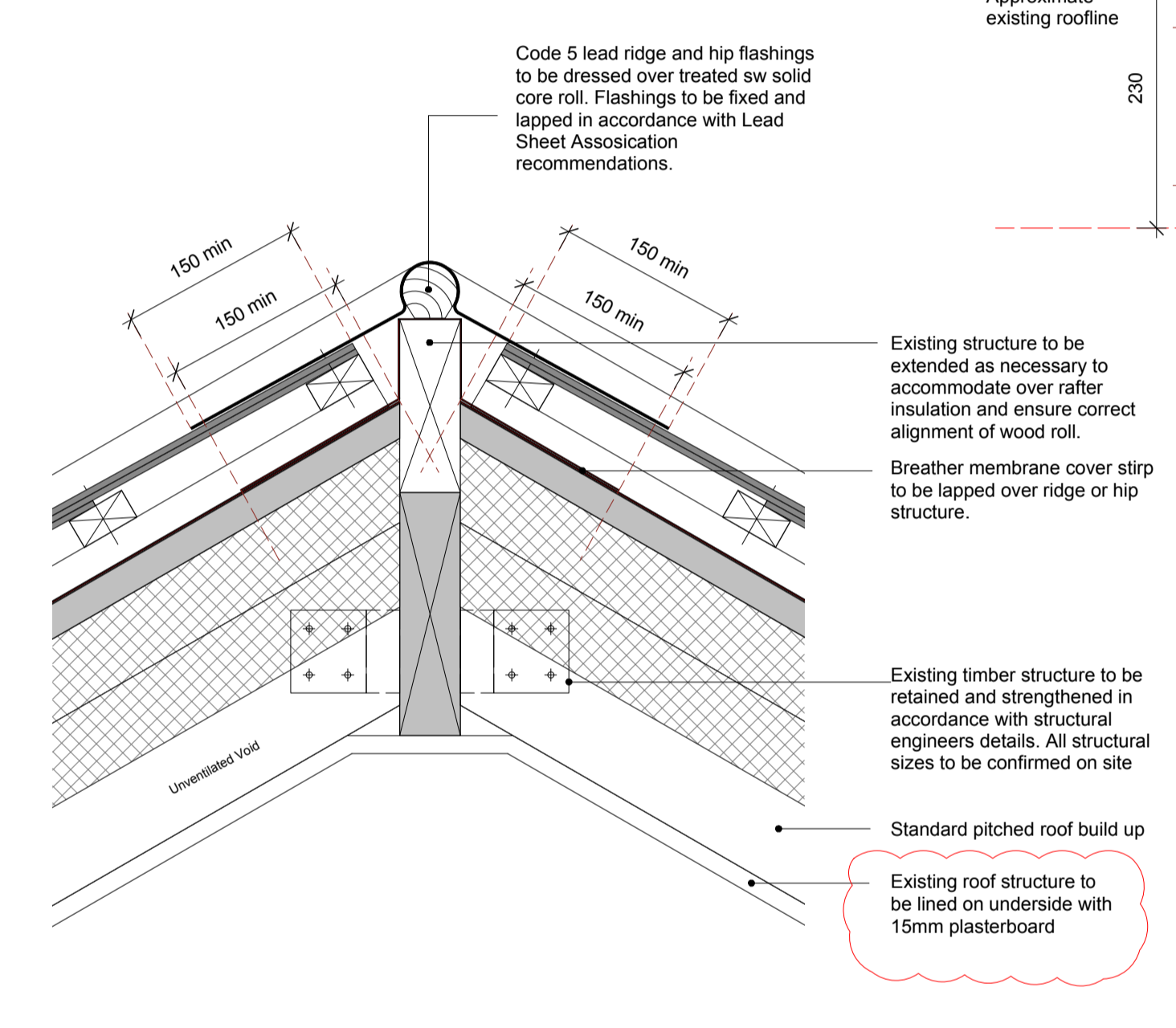
Detail 3: Typical Eaves Gutter Detail (1:5 @ A1)



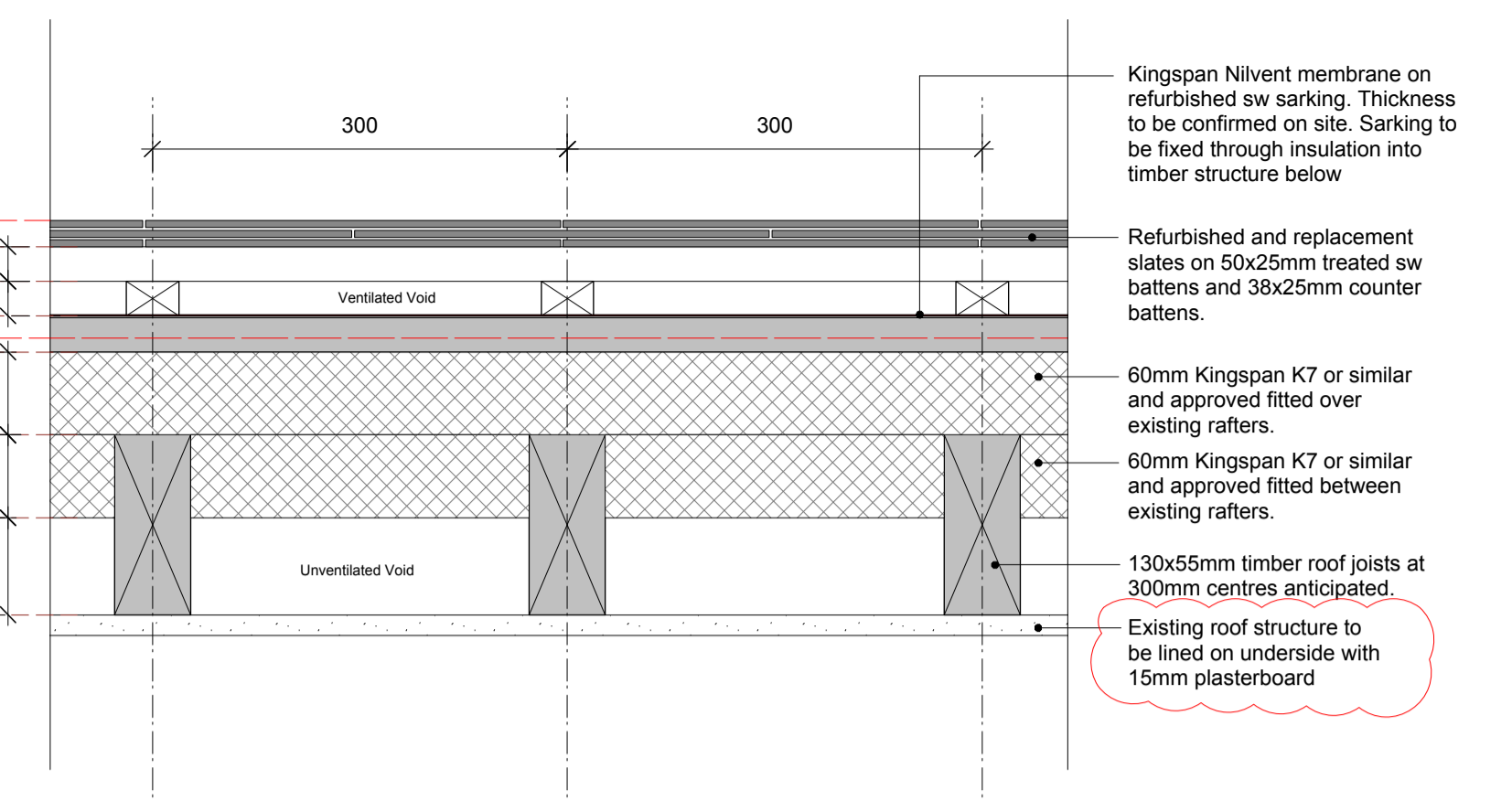
Detail 6: Typical Verge Detail (1:5 @ A1)



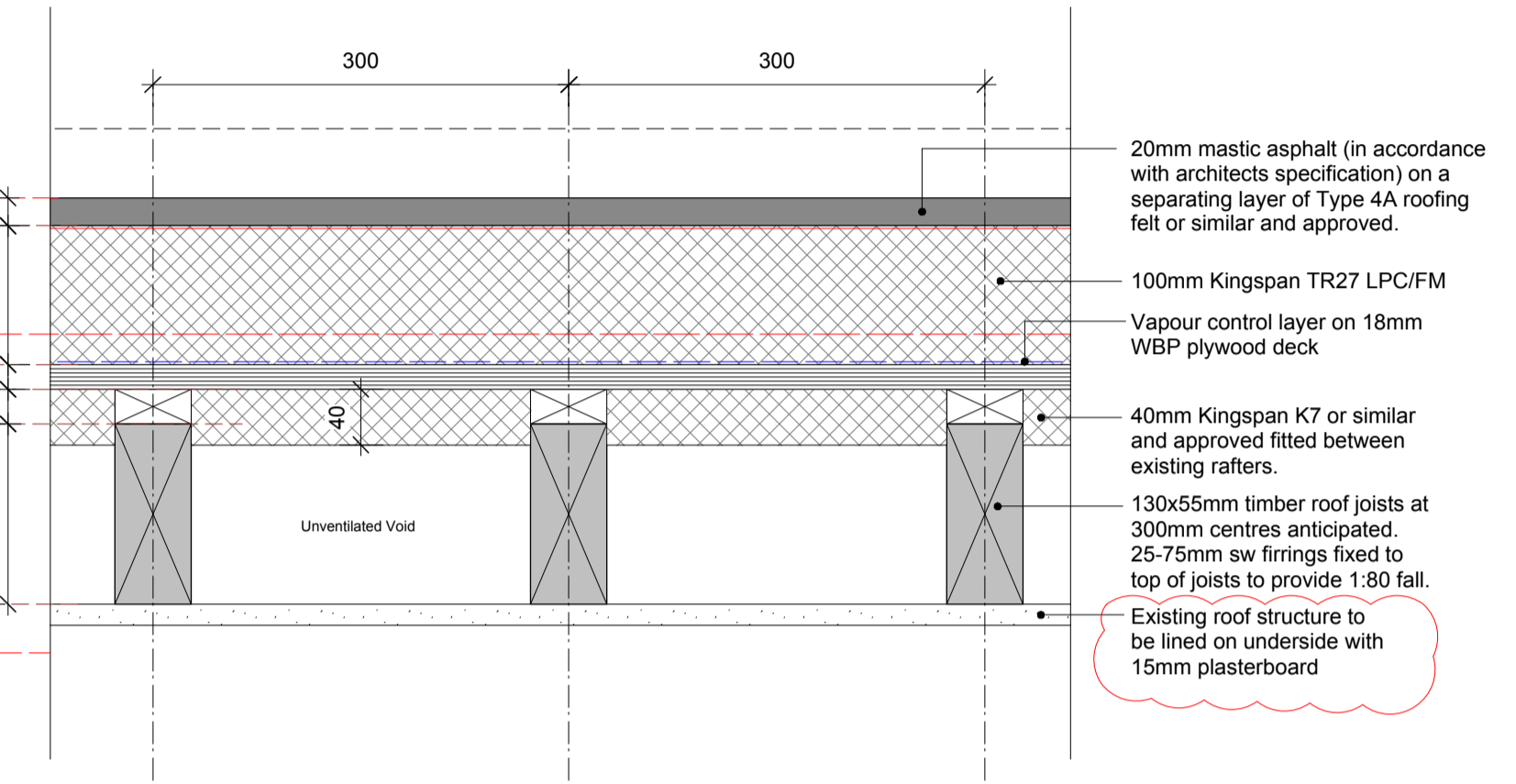
Detail 2: Drainage Detail at Perimeter Kerb (1:5 @ A1)



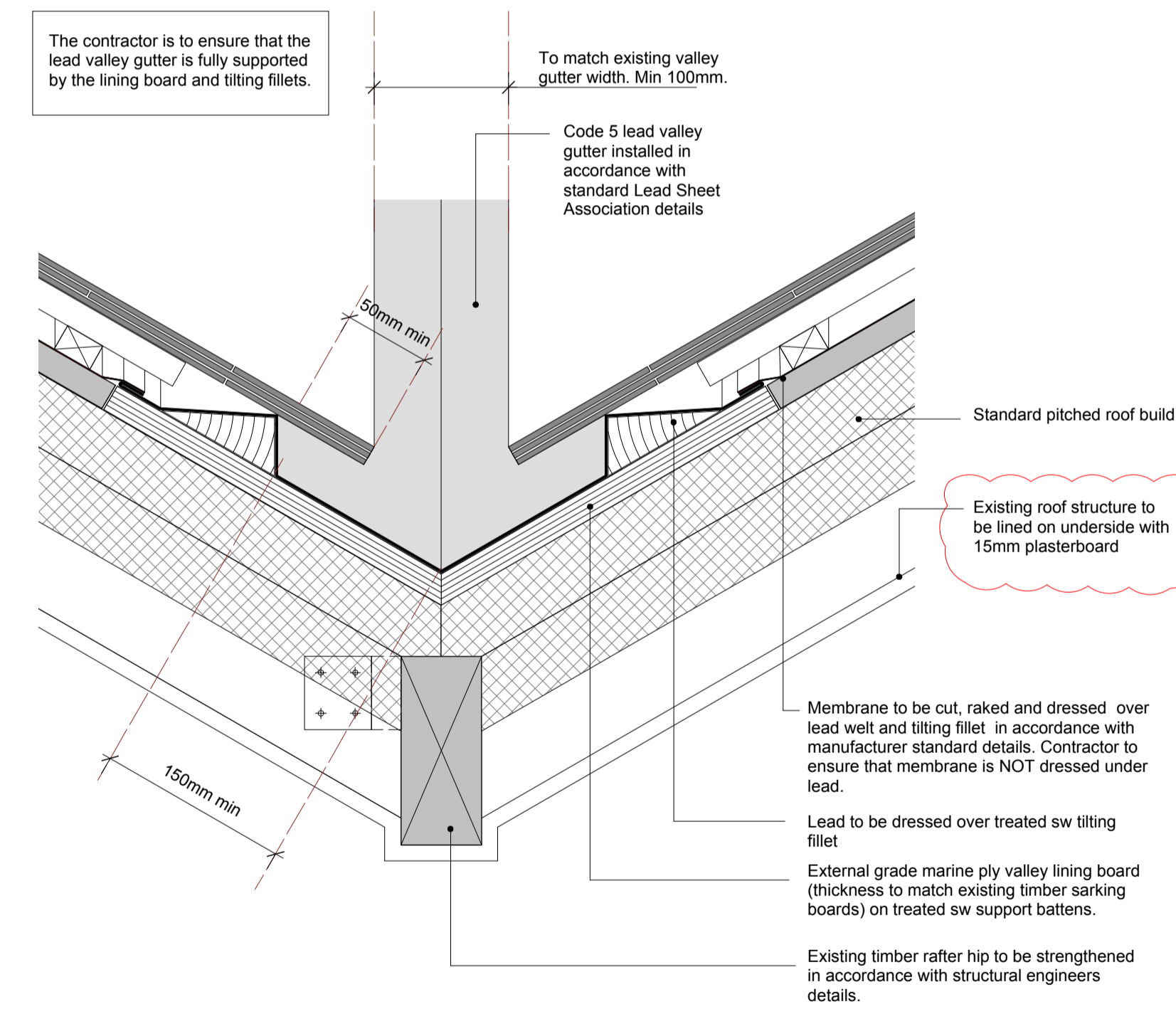
Detail 4: Typical Slate Ridge/Hip Detail (1:5 @ A1)



Typical Pitched Roof Build Up (1:5 @ A1)



Typical Mastic Asphalt Flat Roof Build Up (1:5 @ A1)



Detail 5: Typical Lead Lined Valley Detail (1:5 @ A1)

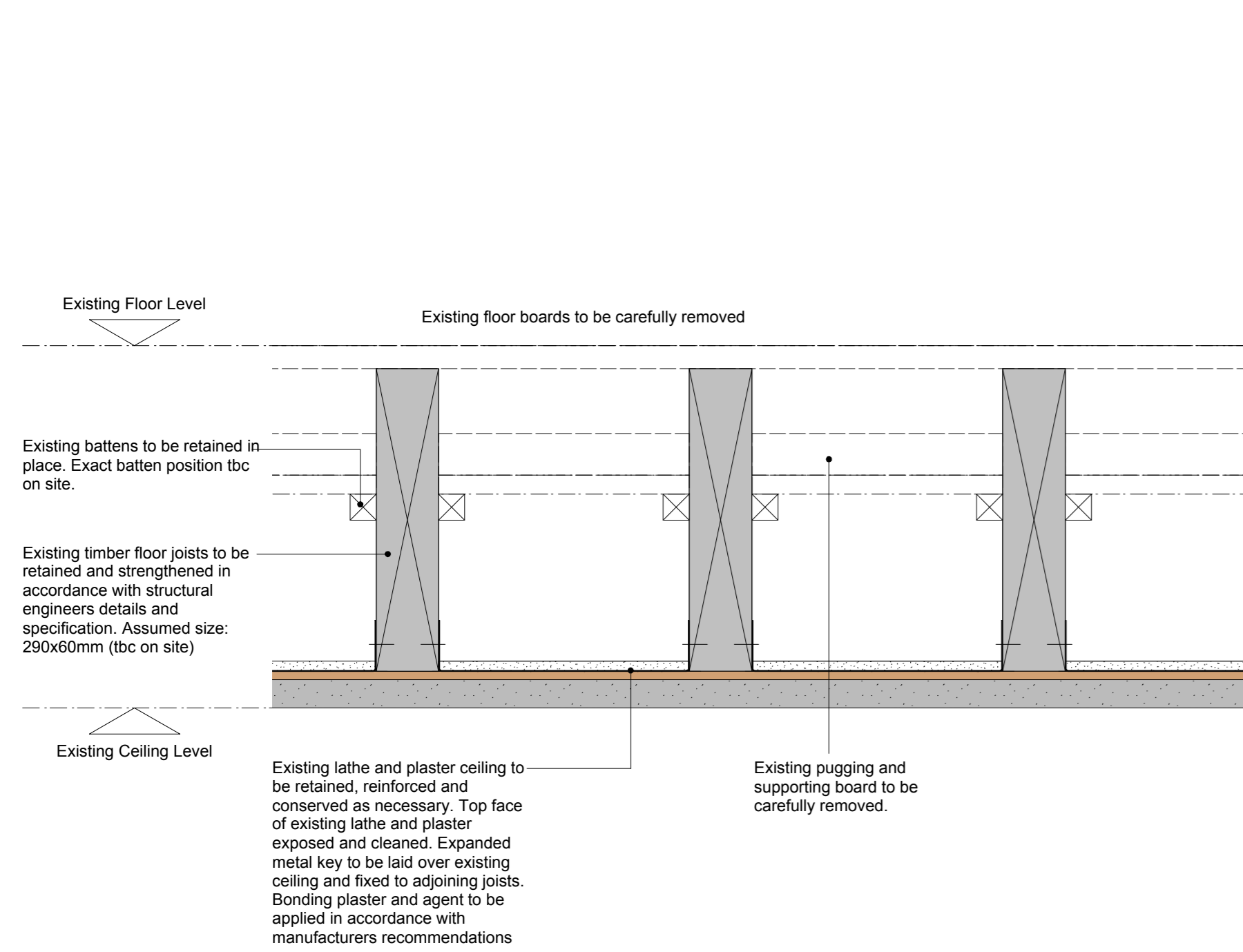
Notes:
KIDDERPORE HALL IS A LISTED BUILDING. NO UNAUTHORISED WORK IS TO BE CARRIED OUT.
The contractor is to take all measures possible to protect the listed building.
1. ALL existing constructions, structure, build ups etc are to be confirmed on site PRIOR to proceeding with the work.
2. This drawing is to be read in conjunction with all relevant Architect GA drawings and specifications.
3. This drawing is to be read in conjunction with all relevant drawings and specifications produced by the structural engineer and M&E consultant.
4. This drawing is to be read in conjunction with the relevant fabric survey produced by ESG.
5. This drawing is to be read in conjunction with the relevant condition investigation report produced by Huton & Rostrom.
6. All lead details to be installed in accordance with Lead Sheet Association recommendations and guidance.

CONSTRUCTION

REVISION	DRN	CHKD	DATE
T1 First Issue	ST	TW	04.11.16
C1 Construction Issue. Roof build up amended to show existing timber lined on underside with plasterboard.	ST	TW	17.01.17

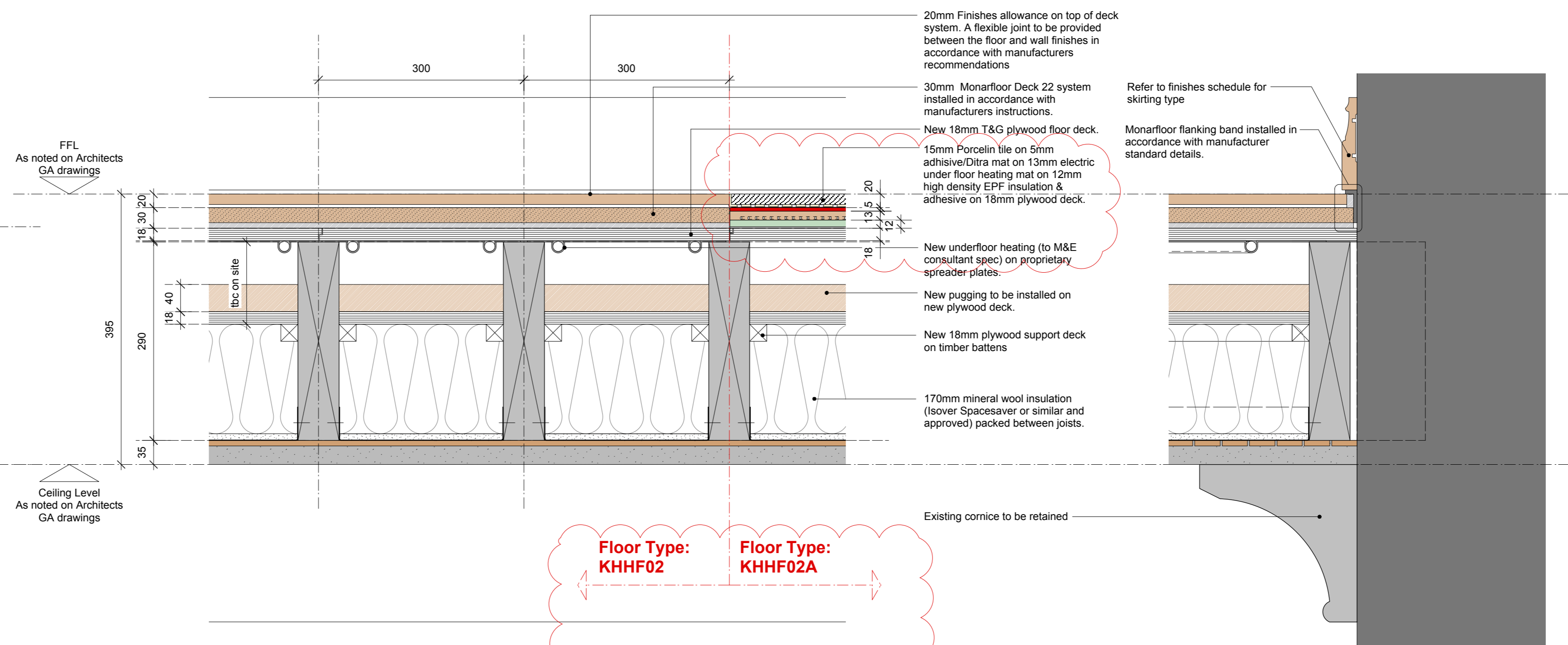
A&Q PARTNERSHIP
CLIENT: MOUNT ANVIL LTD
MOUNT ANVIL

PROJECT: KIDDERPORE AVENUE
DRAWING: Kidderpore Hall Typical Roof Details
SCALE: 1:5 @ A1 DATE: Nov 2016
DRAWING No. 15 230 DRAWN BY: ST
9000-DRG-00KH-DE003 REVISION: C1
A & Q PARTNERSHIP (LONDON) LTD
THE LUX BUILDING, 2-4 HOXTON SQUARE, LONDON N1 6NU
Tel: 020 7613 2244 Fax: 020 7613 2642 Email: london@aqq.co.uk
ARCHITECTURE DESIGN MASTERPLANNING INTERIORS



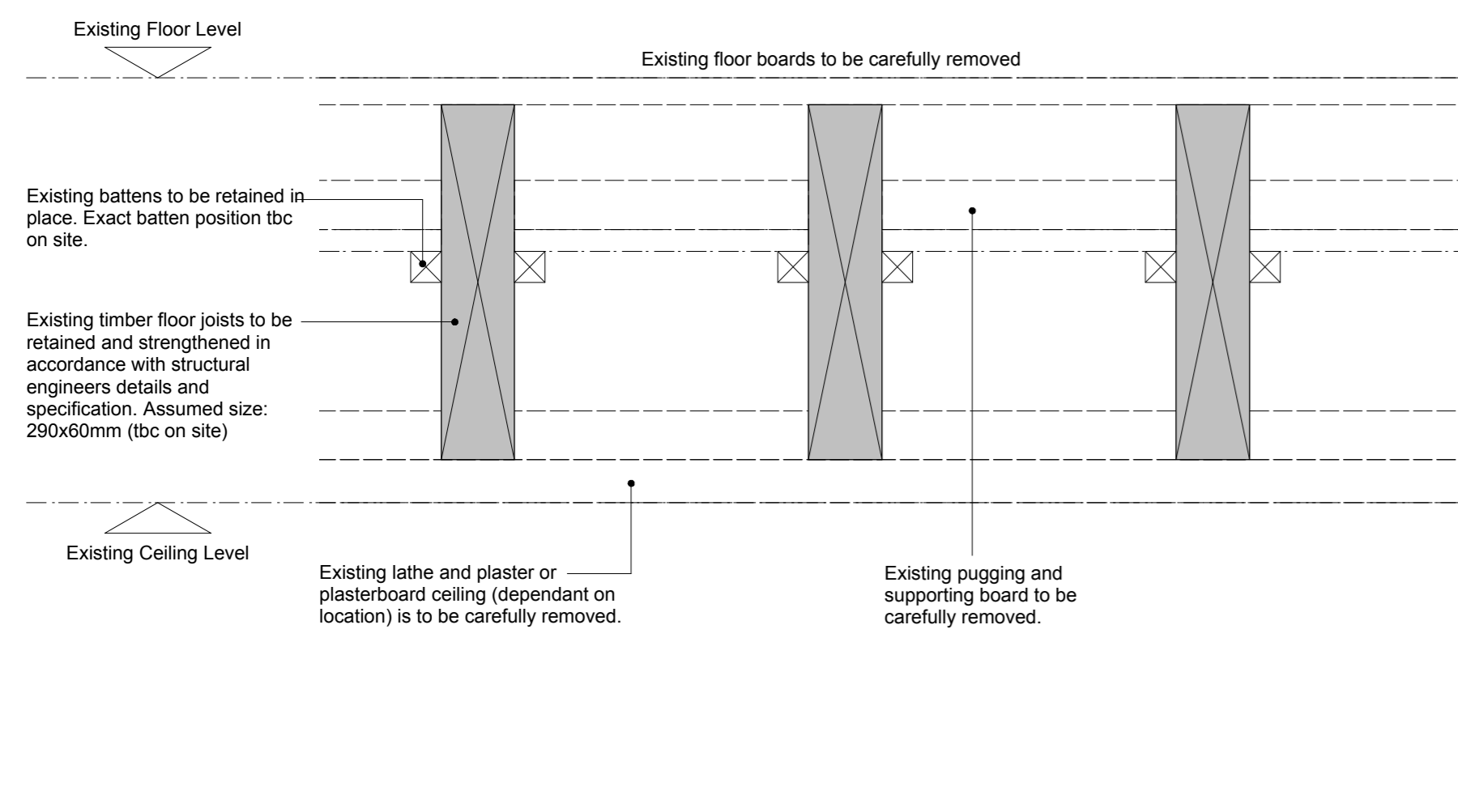
Detail 1: First Floor, Preparation of Existing Floor
1:5 @ A1

FIRST SEPARATING FLOOR FLOOR BUILD UP



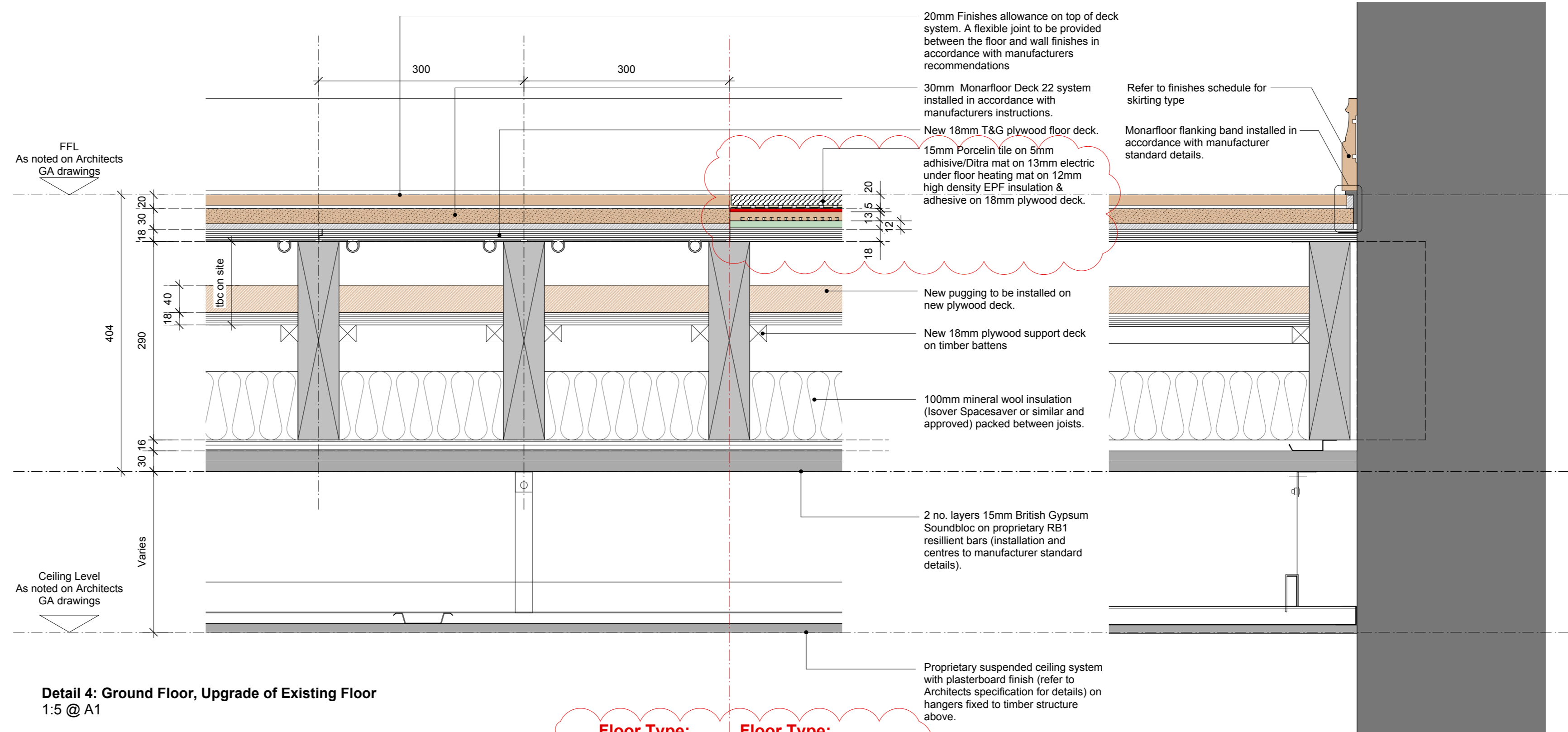
Detail 2: First Floor, Upgrade of Existing Floor
1:5 @ A1

Floor Type: KHHF02
Floor Type: KHHF02A



Detail 3: Ground Floor, Preparation of Existing Floor
1:5 @ A1

GROUND SEPARATING FLOOR FLOOR BUILD UP



Detail 4: Ground Floor, Upgrade of Existing Floor
1:5 @ A1

Floor Type: KHHF01
Floor Type: KHHF01A

Floor Type: KHHF03 - First Floor. (as above but with new timber joists as per structural engineers' specification)
Floor Type: KHHF03A - First Floor. (as above but with new timber joists as per structural engineers' specification)

- Notes:**
1. ALL existing constructions, structure, build ups etc are to be confirmed on site PRIOR to proceeding with the work.
 2. This drawing is to be read in conjunction with all relevant Architect GA drawings and specifications.
 3. This drawing is to be read in conjunction with all relevant drawings and specifications produced by the structural engineer and M&E consultant.
 4. This drawing is to be read in conjunction with the relevant fabric survey produced by ESG.
 5. This drawing is to be read in conjunction with the relevant condition investigation report produced by Hutton & Rostron.

ALL DETAILS TO BE APPROVED BY ACOUSTICIAN PRIOR TO INSTALLATION.

FOR CONSTRUCTION

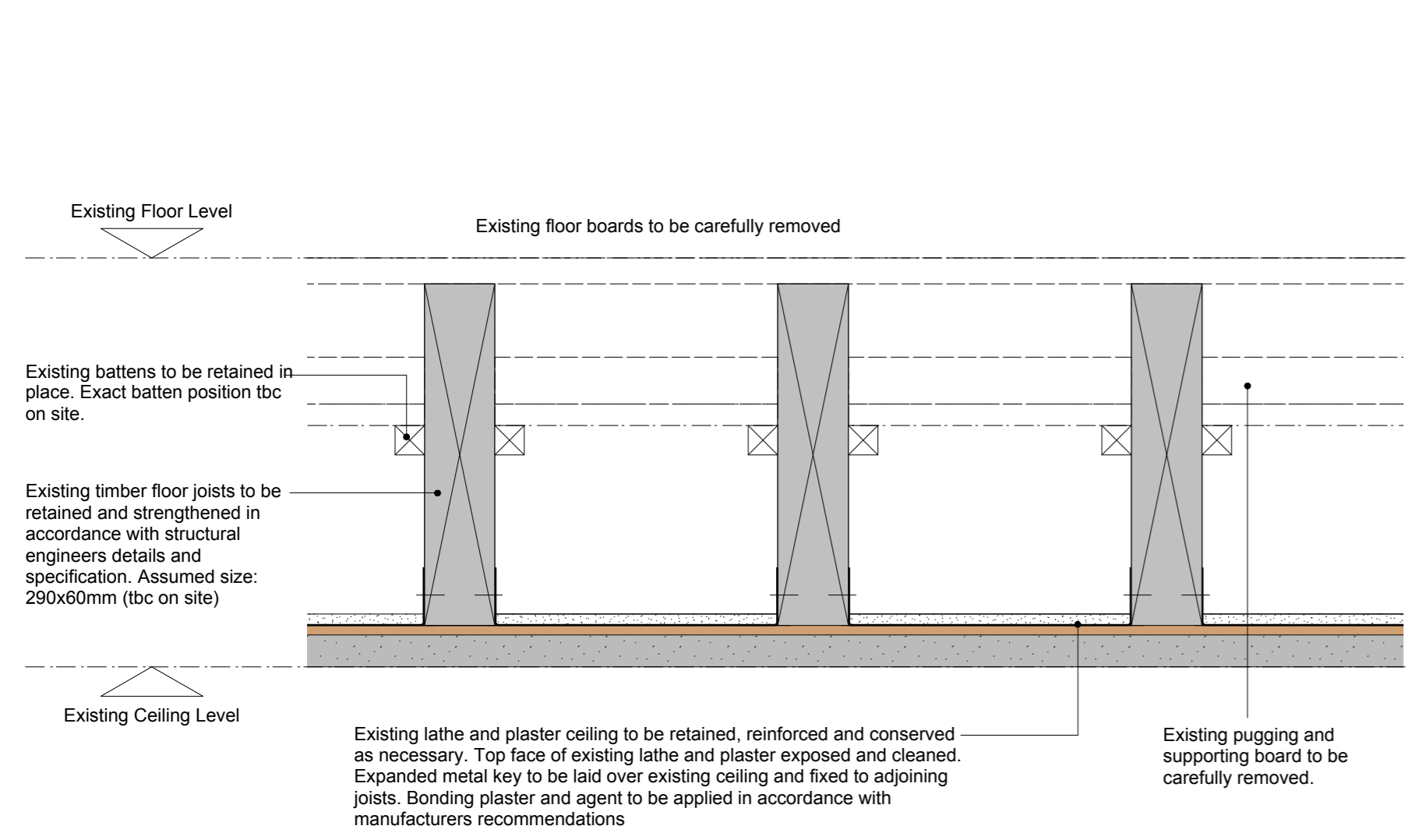
REVISION	DRN	CHKD	DATE
T1 First Issue	ST	TW	18.11.16
C1 Issued for construction	TW		17.01.17



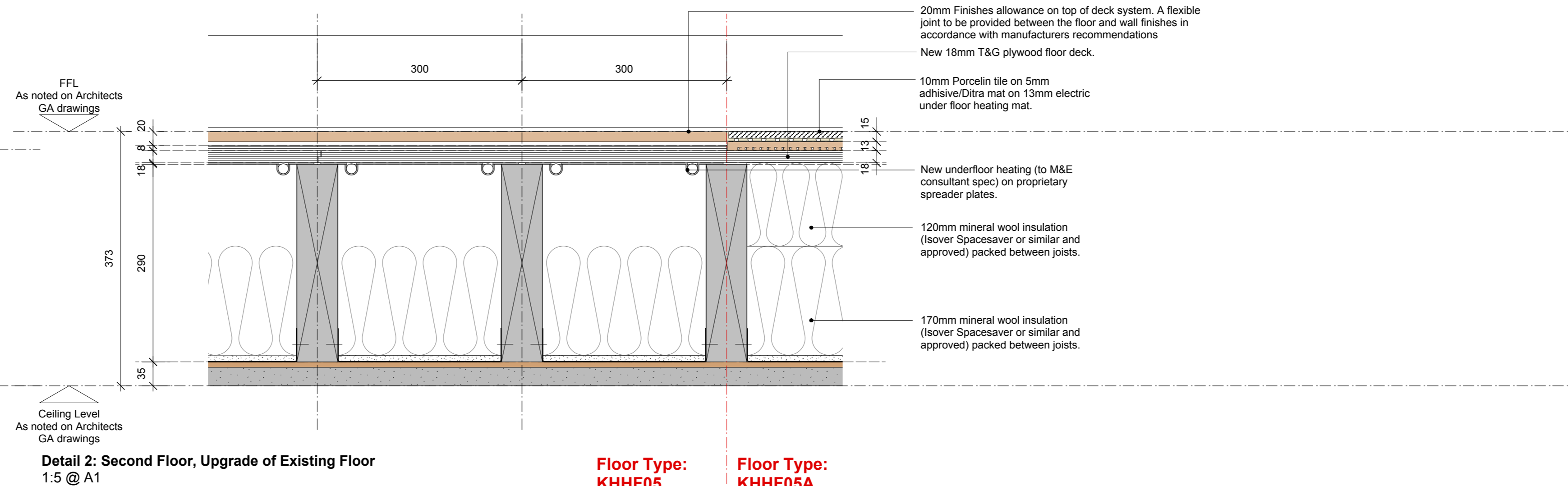
PROJECT
KIDDERPORE AVENUE

DRAWING
Kidderpore Hall
Separating Floor Details

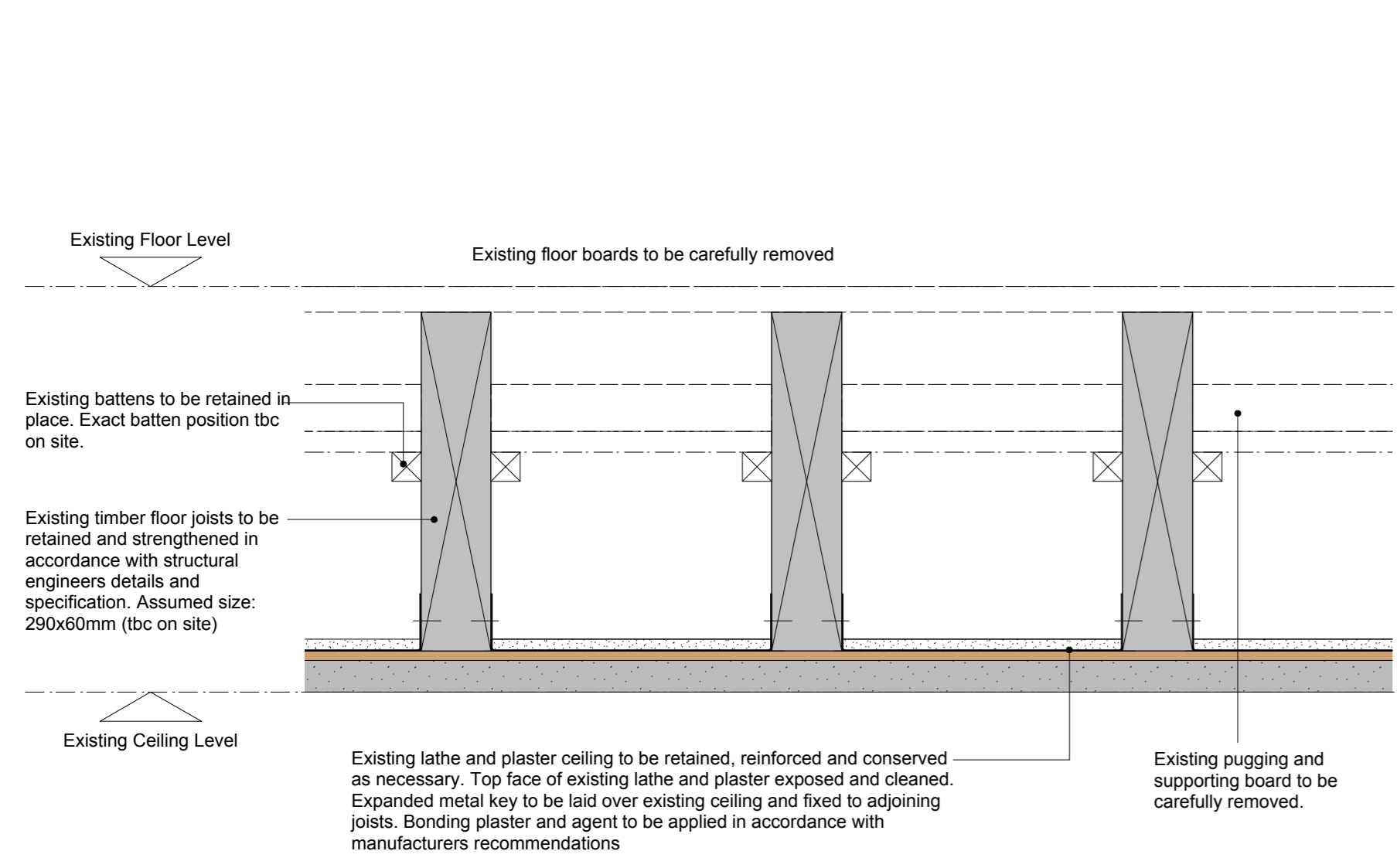
SCALE 1:5 @ A1 DATE Nov 2016
DRAWING No. 15 230 DRAWN BY ST
9000-DRG-00KH-DE004 REVISION C1



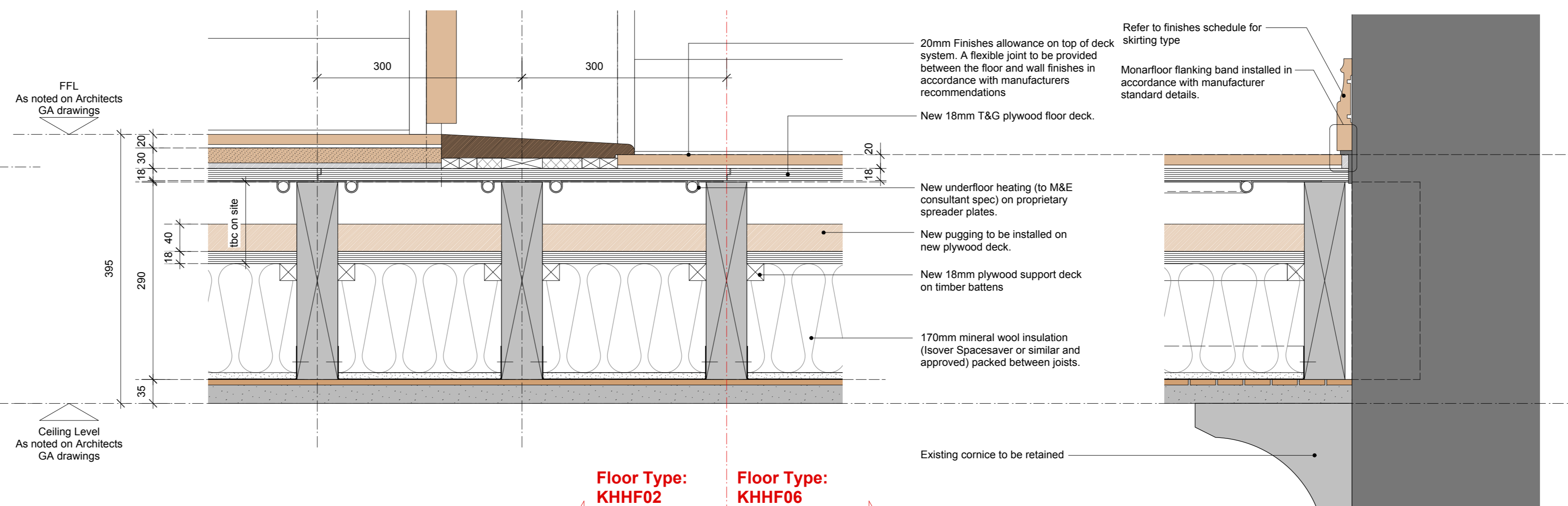
Detail 1: Second Floor, Preparation of Existing Floor
1:5 @ A1
SECOND NON-SEPARATING FLOOR FLOOR BUILD UP



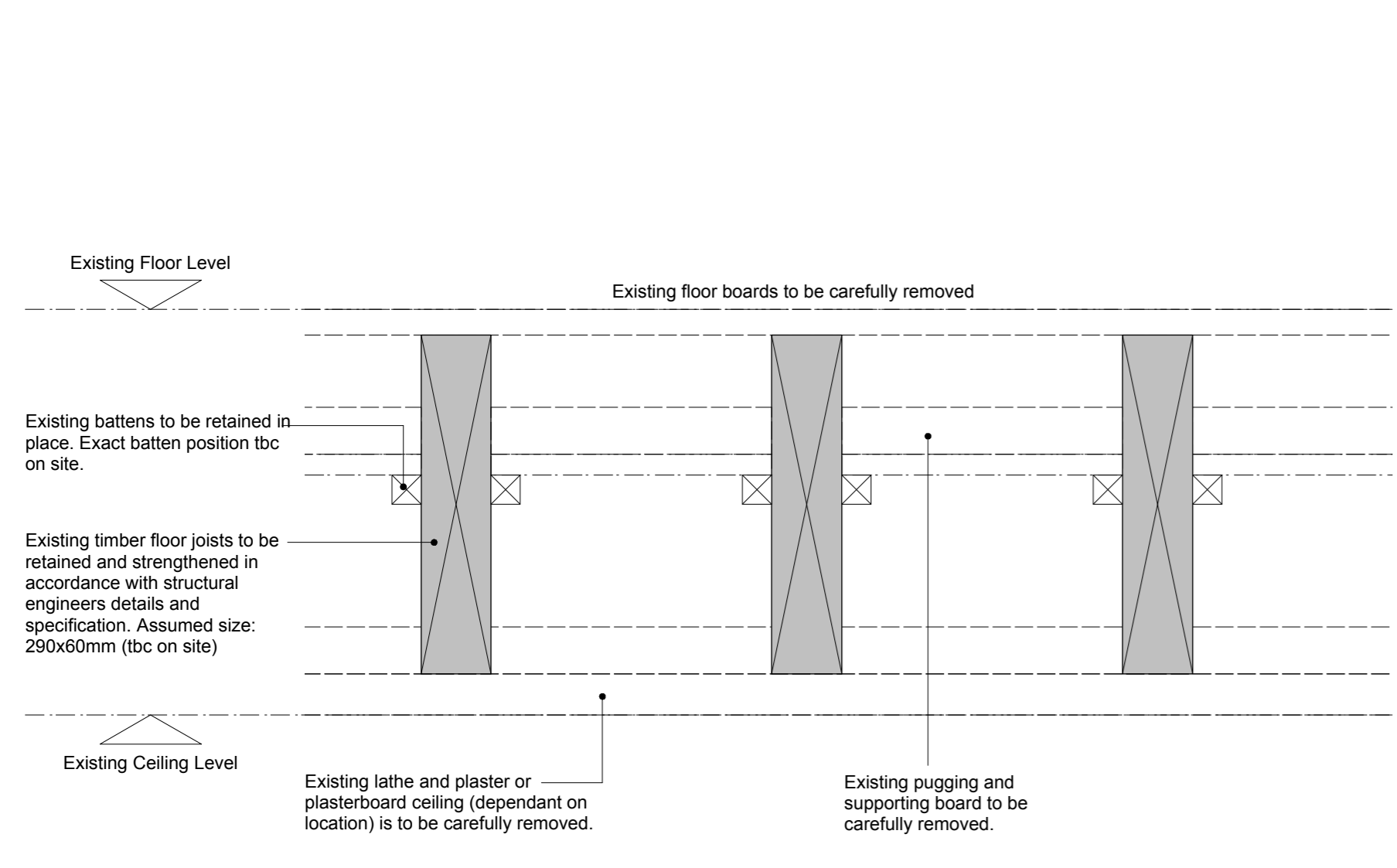
Detail 2: Second Floor, Upgrade of Existing Floor
1:5 @ A1
Floor Type: KHHF05 **Floor Type: KHHF05A**



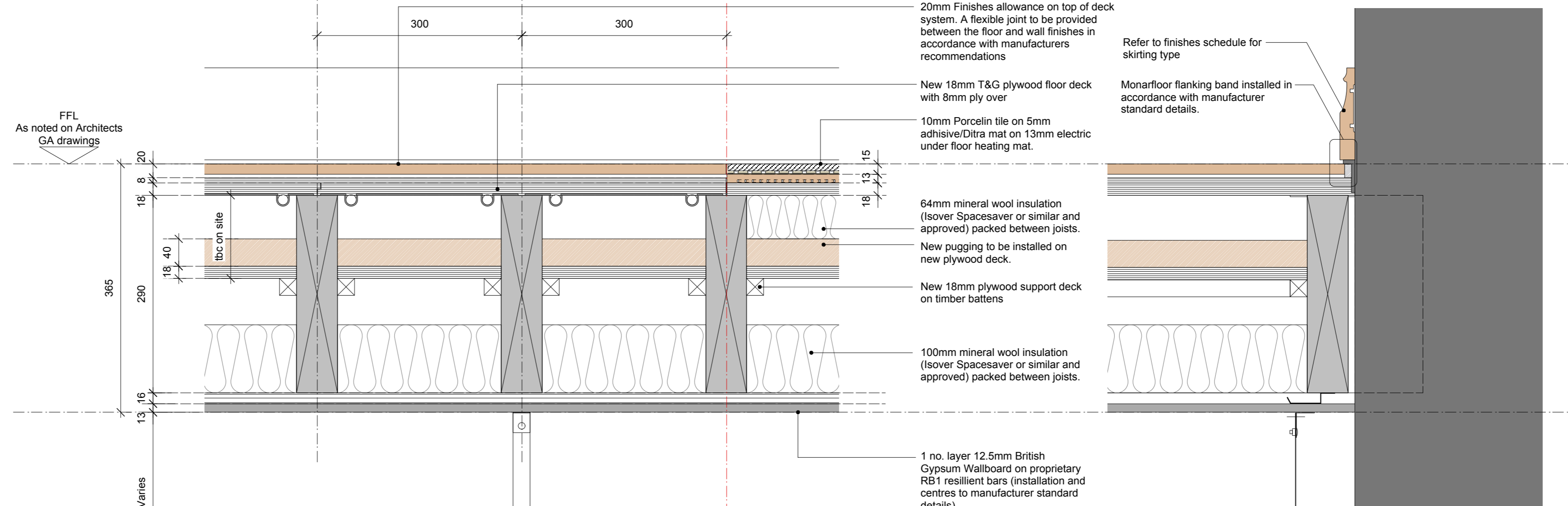
Detail 3: First Floor, Preparation of Existing Floor
1:5 @ A1
FIRST NON-SEPARATING FLOOR FLOOR BUILD UP



Detail 4: First Floor, Upgrade of Existing Floor
1:5 @ A1
Floor Type: KHHF02 **Floor Type: KHHF06**



Detail 5: Ground Floor, Preparation of Existing Floor
1:5 @ A1
GROUND NON-SEPARATING FLOOR FLOOR BUILD UP



Detail 6: Ground Floor, Upgrade of Existing Floor
1:5 @ A1
Floor Type: KHHF04 **Floor Type: KHHF04A**

0 10 50 100mm
DIMENSION AT ORIGINAL SHEET SIZE
Contractors must check all dimensions on site. Only figured dimensions are to be worked from. Discrepancies must be reported to the Architect before proceeding. © This drawing is Copyright.

- Notes:**
1. ALL existing constructions, structure, build ups etc are to be confirmed on site PRIOR to proceeding with the work.
 2. This drawing is to be read in conjunction with all relevant Architect GA drawings and specifications.
 3. This drawing is to be read in conjunction with all relevant drawings and specifications produced by the structural engineer and M&E consultant.
 4. This drawing is to be read in conjunction with the relevant fabric survey produced by ESG.
 5. This drawing is to be read in conjunction with the relevant condition investigation report produced by Hutton & Rostron.

ALL DETAILS TO BE APPROVED BY ACOUSTICIAN PRIOR TO INSTALLATION.

FOR CONSTRUCTION

REVISION	DRN	CHKD	DATE
C1 First Issue	TW		17.01.17

A&Q
PARTNERSHIP

CLIENT
MOUNT ANVIL LTD

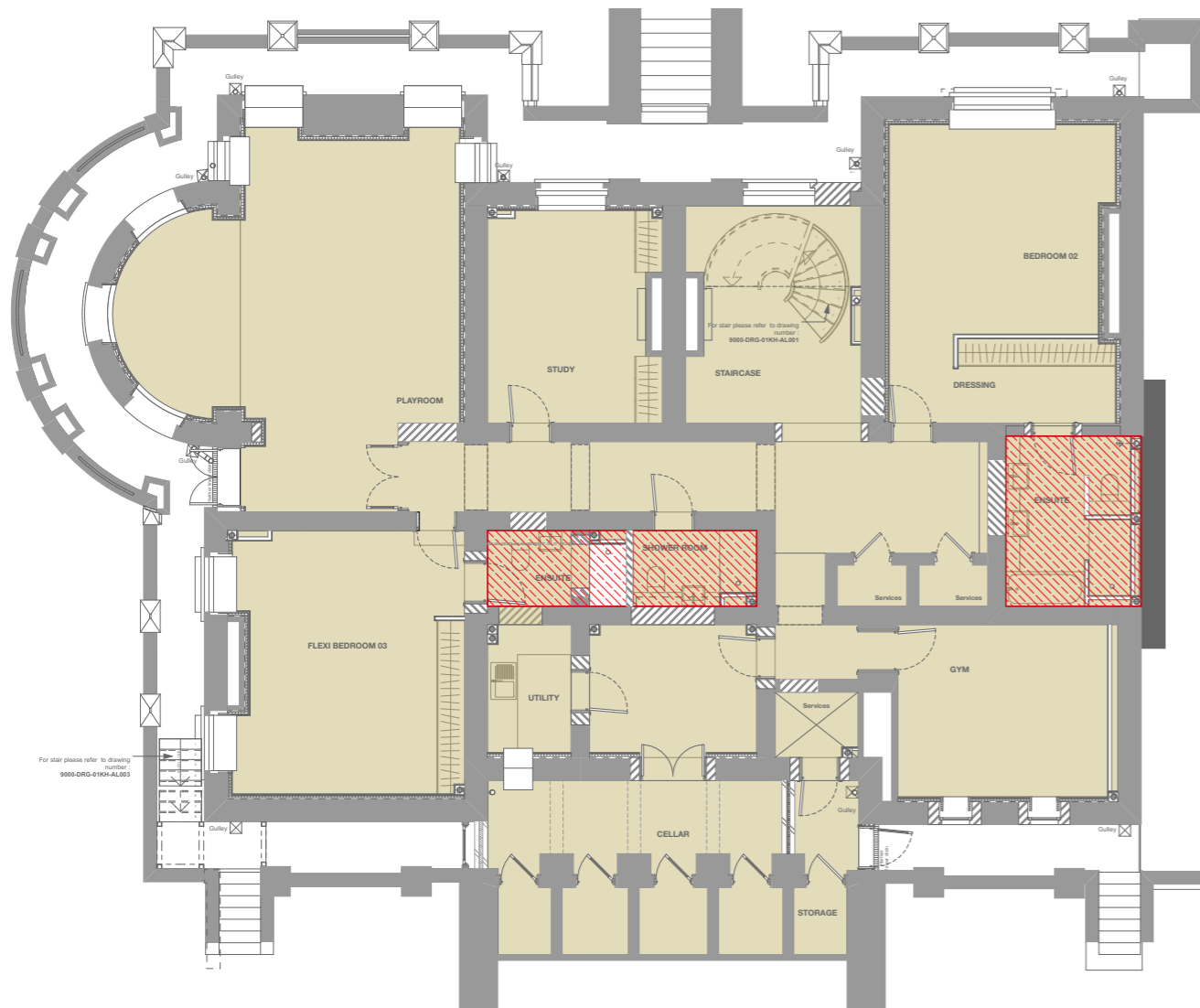


PROJECT
KIDDERPORE AVENUE

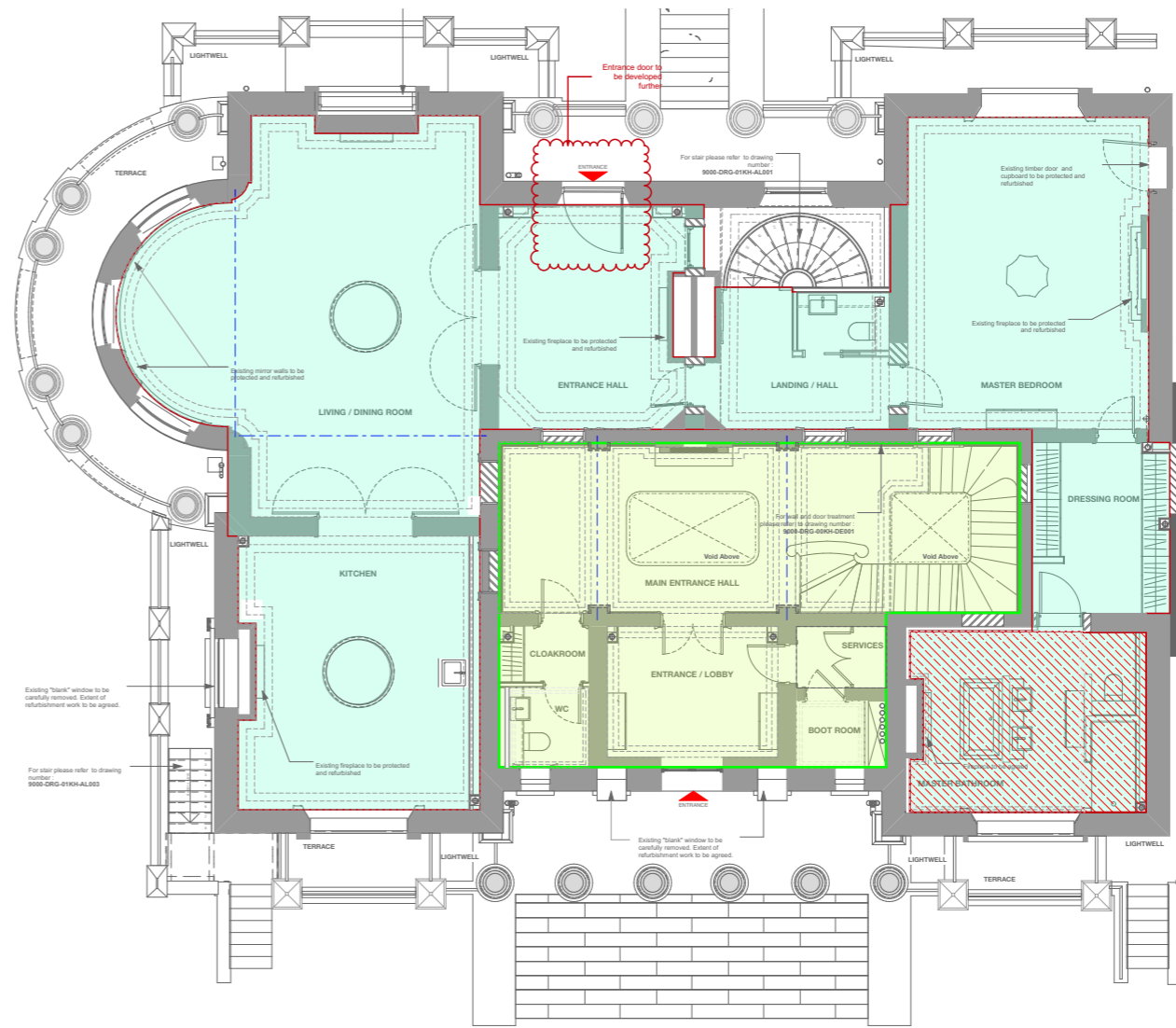
DRAWING
Kidderpore Hall
Non-Separating Floor Details

SCALE 1:5 @ A1 DATE Nov 2016
DRAWING No. 15 230 DRAWN BY TW
9000-DRG-00KH-DE005 REVISION C1

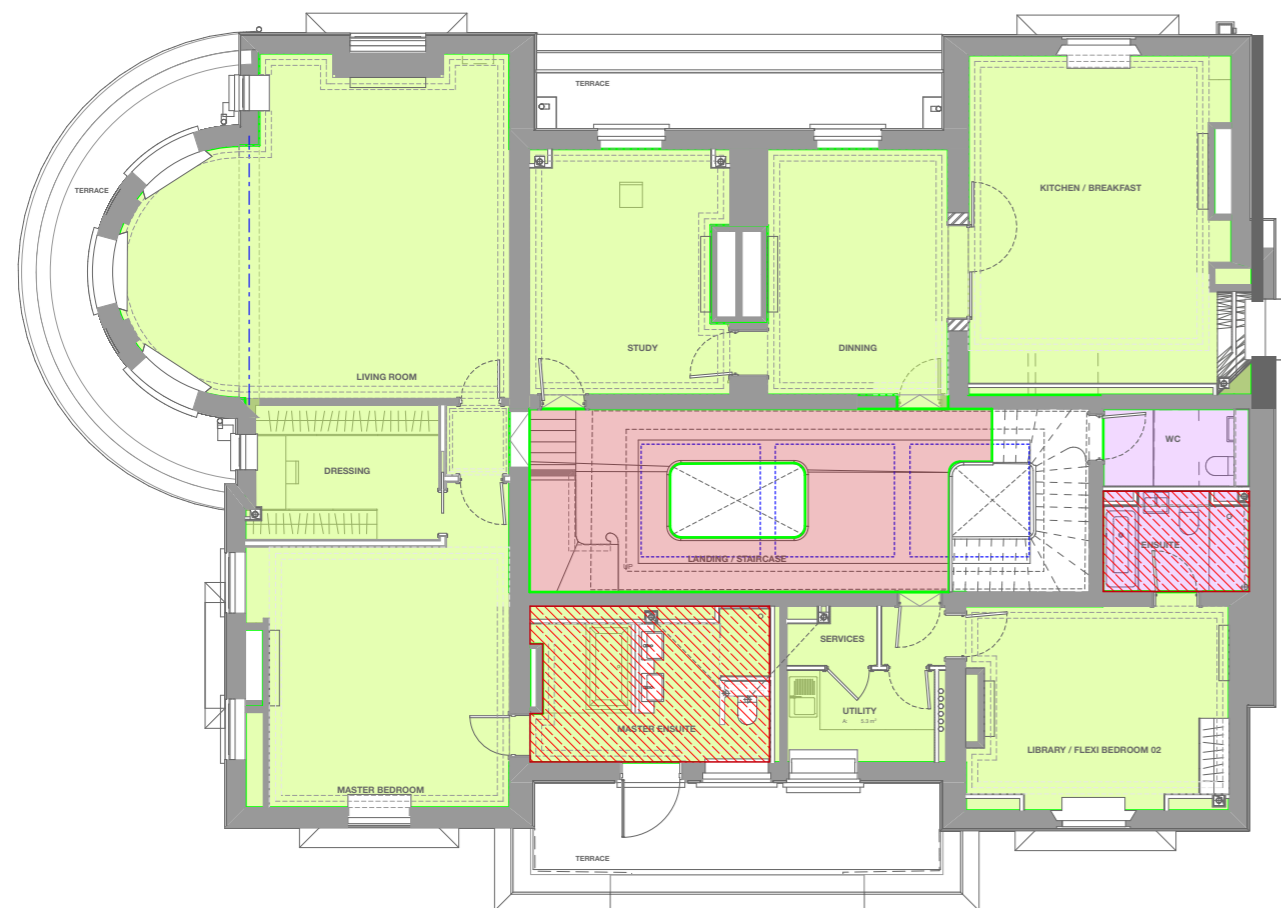
A & Q PARTNERSHIP (LONDON) LTD
THE LUX BUILDING, 2-4 HOXTON SQUARE, LONDON N1 6 NU
Tel: 020 7613 2244 Fax: 020 7613 2642 Email: london@aqp.co.uk
ARCHITECTURE DESIGN MASTERPLANNING INTERIORS



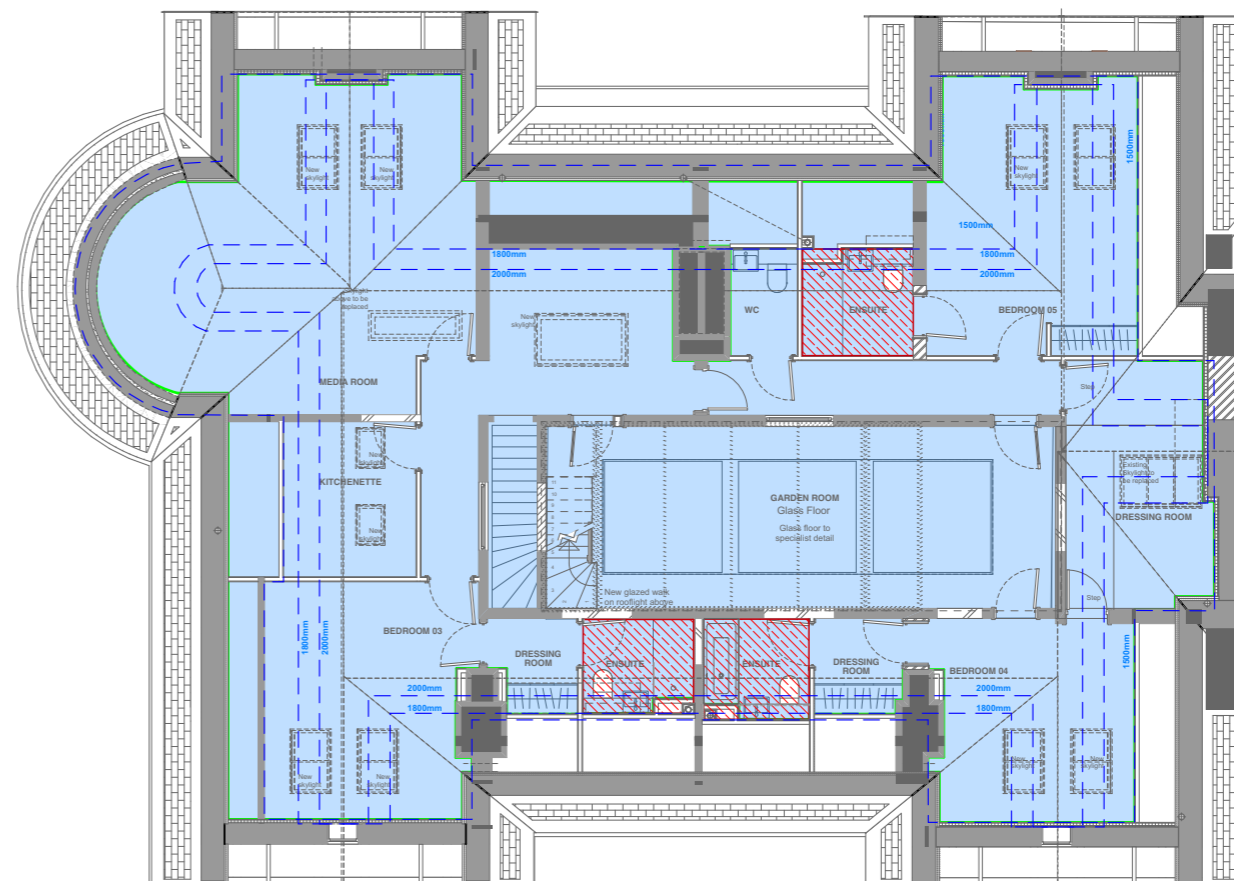
KH_LOWER GROUND FLOOR



KH_UPPER GROUND FLOOR



KH_FIRST FLOOR



KH_SECOND FLOOR



KEY PLAN
NOTE: ALL INFORMATION SHOWN ON THIS DRAWINGS IS SUBJECT TO DESIGN DEVELOPMENT

Floor Type Legend:

- GHFF01 - New Ground Bearing Slab
- GHFF01A - New Ground Bearing Slab (UFH)
- KHFF04 - Upper Ground Upgrade
- KHFF04A - Upper Ground Upgrade (UFH)
- KHFF01 - Upper Ground Upgrade
- KHFF02 - Level 1 Upgrade
- KHFF02A - Level 1 Upgrade (UFH)
- KHFF06 - Level 1 Upgrade
- KHFF03 - Level 1, New Joists
- KHFF03A - Level 1, New Joists (UFH)
- KHFF05 - Level 2
- KHFF05A - Level 2 (UFH)

Refer to Drawings 9000-DRG-00KH-DE004 & DE005 for Floor Details

FOR CONSTRUCTION

REVISION	DRN	CHKD	DATE	
C1	Issued for Construction	NV	TW	17/01/2017



CLIENT
MOUNT ANVIL LTD



PROJECT
KIDDERPORE AVENUE

DRAWING
Kidderpore Hall
Floor Type Reference Plans

SCALE 1:150 @ A3 DATE January 2017

DRAWING No. 15 230
9000-DRG-00KH- DE006
DRAWN BY NV
REV C1

A & Q PARTNERSHIP (LONDON) LTD
THE LUX BUILDING, 2-4 HOXTON SQUARE, LONDON N1 6 NU
Tel: 020 7613 2244 Fax: 020 7613 2642 Email: london@aqp.co.uk
ARCHITECTURE DESIGN MASTERPLANNING INTERIORS