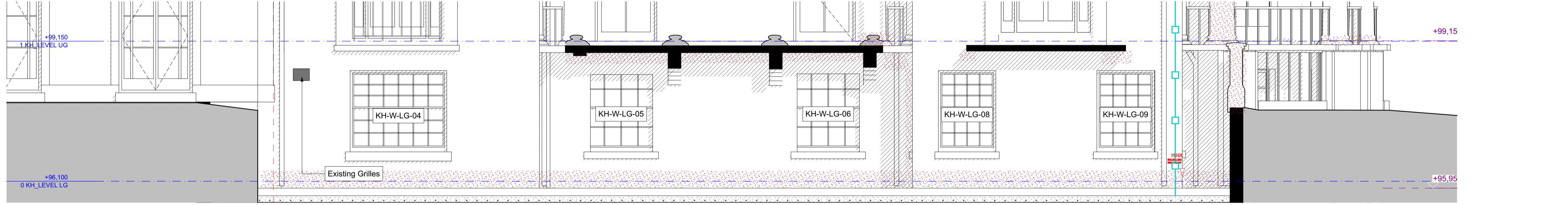


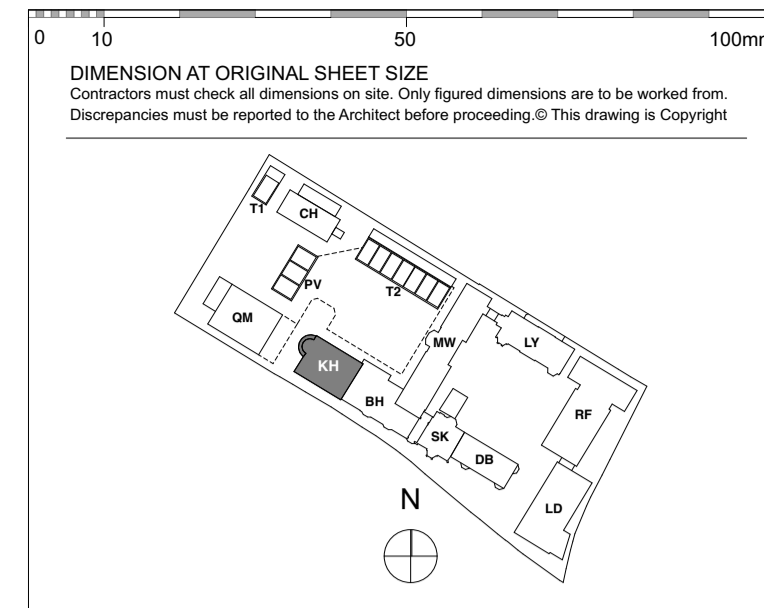


PROPOSED NORTH ELEVATION



PROPOSED LOWER NORTH ELEVATION

- REPAIR WORK KEY**
- Stonework - Repair
 - Brickwork - Repair.
 - Repointing - Rake out and repoint to match existing.
 - Stained area to be cleaned.
 - Any type of fitting to be removed and brickwork made good.
 - Render - Repair
 - Brickwork - New to match existing
 - Structural Crack to be repaired to Structural Engineer's specification.
 - Cornice - Repair
 - Decorative Brickwork to be renewed to match existing brickwork.
 - Lightning Conductor to be removed and brickwork made good.
- Note: All cables to be removed and brickwork made good



KEY PLAN
NOTE:

FOR CONSTRUCTION

REVISION	DRN	CHKD	DATE
C1 Issued for Construction	K/C/C N/V/F/C	TW	17/01/2017



CLIENT
MOUNT ANVIL LTD

PROJECT
KIDDERPORE AVENUE

DRAWING
Kidderpore Hall
North Elevation As Proposed

SCALE 1:50 @ A1 DATE January 2017

DRAWING No. 15 230 DRAWN BY K/C
9000-DRG-02KH-EL003 REV C1

A & Q PARTNERSHIP (LONDON) LTD
THE LUX BUILDING, 2-4 HOXTON SQUARE, LONDON N1 6 NU
Tel: 020 7613 2244 Fax: 020 7613 2642 Email: london@aqp.co.uk
ARCHITECTURE DESIGN MASTERPLANNING INTERIORS

TYPICAL WINDOW - OUTWARD OPENING
(based on Ideal Combi FUTURA+)

- Made of Timber | PUR | Aluminium
- Slim 53mm aluminium profiles
- Double glazed units.
- 149mm frame (typical Ideal Combi Futura+ or similar)
- 160mm brick reveal which allows internal return of 56mm

Return breather membrane into reveal over 12.5mm thick Siniat Purple sheathing board. EPDM to lap onto it.

Skirting below

Window frame packed on tight shims / or M/S fixing strap. To be confirmed by windows manufacturer / installer

PU expanding Foam

Air seal

Dashed line indicates edge of slab

Powder coated aluminium / timber frame by Ideal Combi (Futura+). Colour to match metal cladding (RAL 7008)

Wall ties 25/14 prop. channel with SDS wall ties by Ancon or equivalent

Compressible seal (Compriband 600 or similar)

5mm joint to be maintained

D01 - TYPICAL WINDOW JAMB DETAIL TYPE 1
1:10@A3

Maintain 5mm joint each end.

Low bond DPC slip plane on cavity tray.

Periscopic weep vents at each end (if required). Stone specialist to advise.

2 courses bed joint reinforcement extending min 600mm either side of opening.

Cavity tray with stop ends on 4mm mortar bed

E01 - PARTIAL ELEVATION OF TYPICAL WINDOW
1:10@A3

Windows to be generally side-guided opening. Refer to Window Schedule for further information

Structural Opening

Frame Size

Typical wall construction (from outside):

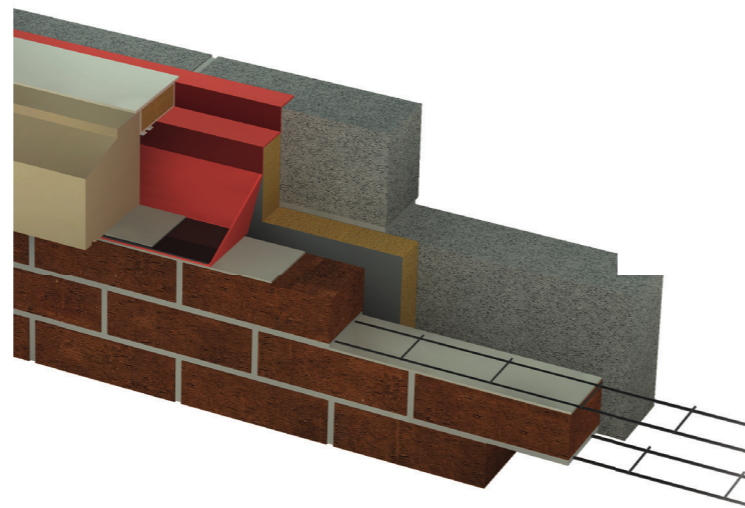
- 102.5mm brick
- 50mm (or 162.5mm) cavity
- 70mm partial fill cavity insulation Kingspan K12 or equivalent
- 12.5mm thick Siniat GTEC Weather Defence fixed to metsec frame
- 100mm Metsec cold rolled galvanised steel framing packed with Rockwool 'Flexi' insulation
- Vapour control layer
- 2 layers 15mm soundbloc acoustic plasterboard

Insulated DPC cavity closer (Damcor or similar)

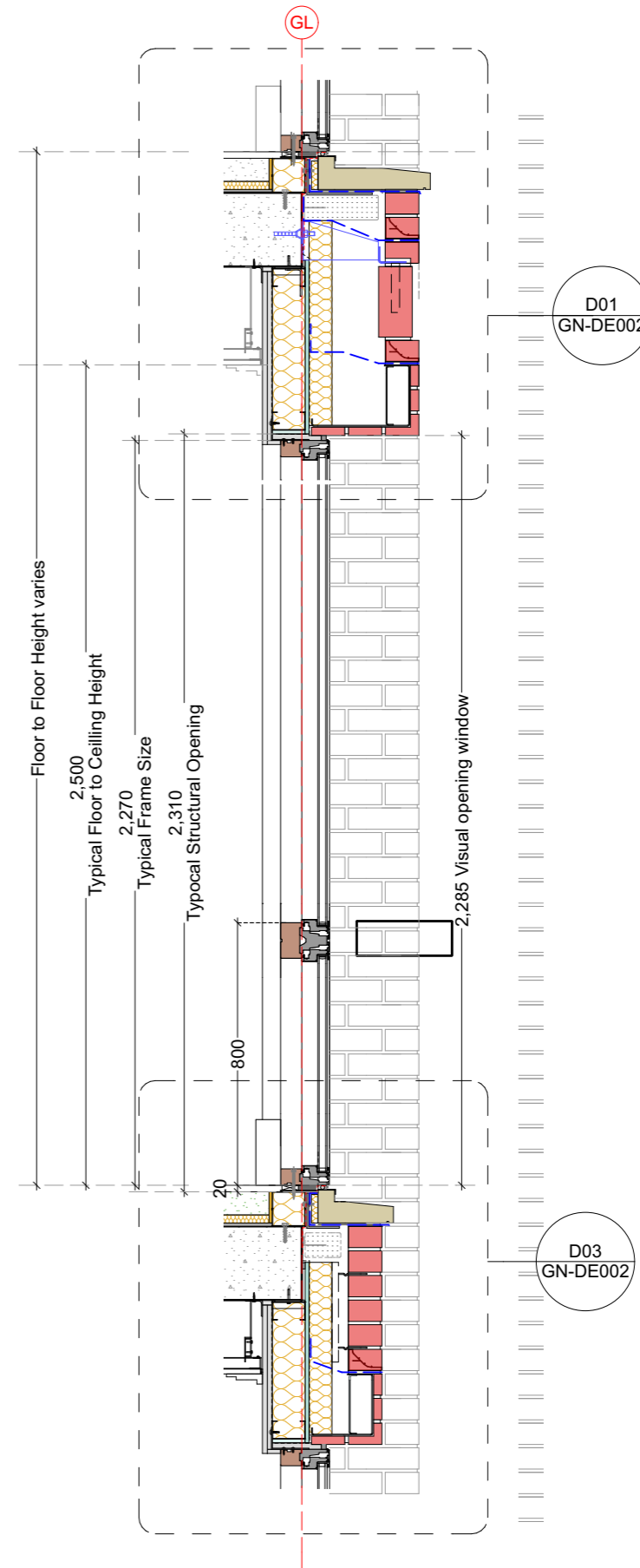
Wall ties 25/14 by Ancon or equivalent

Natural Portland Stone (Slip Cill) on 4mm mortar bed on low bond DPC as slip plane on cavity tray with stop ends

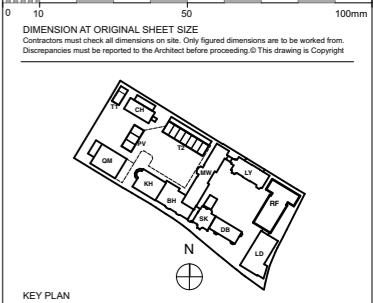
D02 - TYPICAL WINDOW JAMB DETAIL TYPE 2
1:10@A3



3D VIEW OF SLIP CILL BEDDING



S01 - SECTION THROUGH TYPICAL WINDOW
1:20@A3



NOTE

Refer to Elevation Drawings for further information re: proposed location for movement joints, brick support and areas with brick bed joint reinforcement.

Drawing to be read with relevant Str. Eng. details

Toughened glazing to units below 800mm above FFL.

Translucent glazing for bathrooms.

NOTE

Natural stone window & threshold sills laid in hydraulic Lime sand mortar NHL5

FOR TENDER

REVISION	DRN	CHKD	DATE
P1 First Issue	EC	TW	12/07/2016
T1 Issued for Tender.	EC	TW	07/09/2016



PROJECT
KIDDERPORE AVENUE

DRAWING
Generally Applicable
Typical Windows - Plan & Section

SCALE As shown DATE May 2016

DRAWING No. 15 230 DRAWN BY EC
9000-DRG-00GN-DE001 REV T1

A & Q PARTNERSHIP (LONDON) LTD
THE LUX BUILDING, 2-4 HOXTON SQUARE, LONDON N1 6 NU
Tel: 020 7613 2244 Fax: 020 7613 2642 Email: london@aqp.co.uk
ARCHITECTURE DESIGN MASTERPLANNING INTERIORS