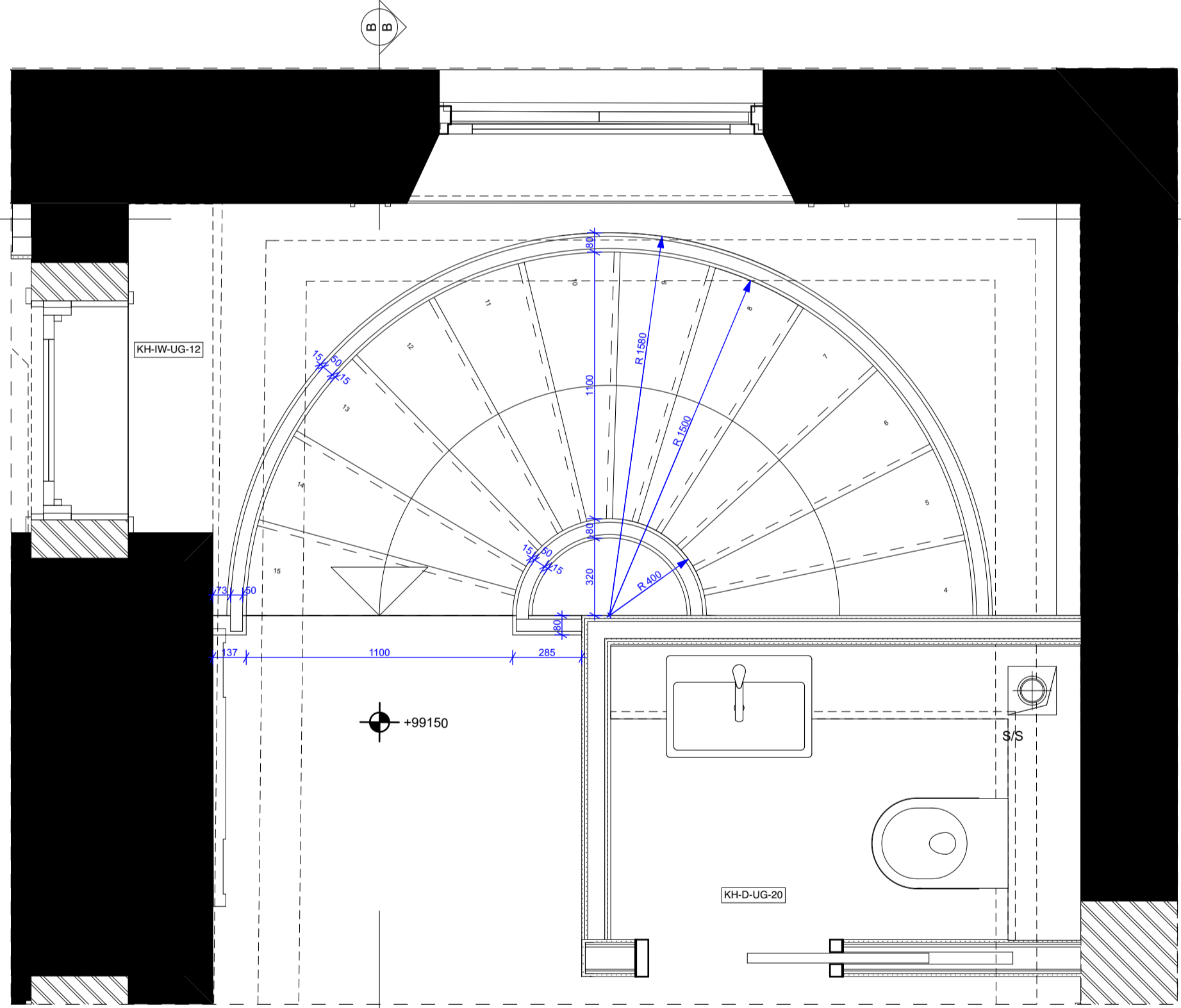
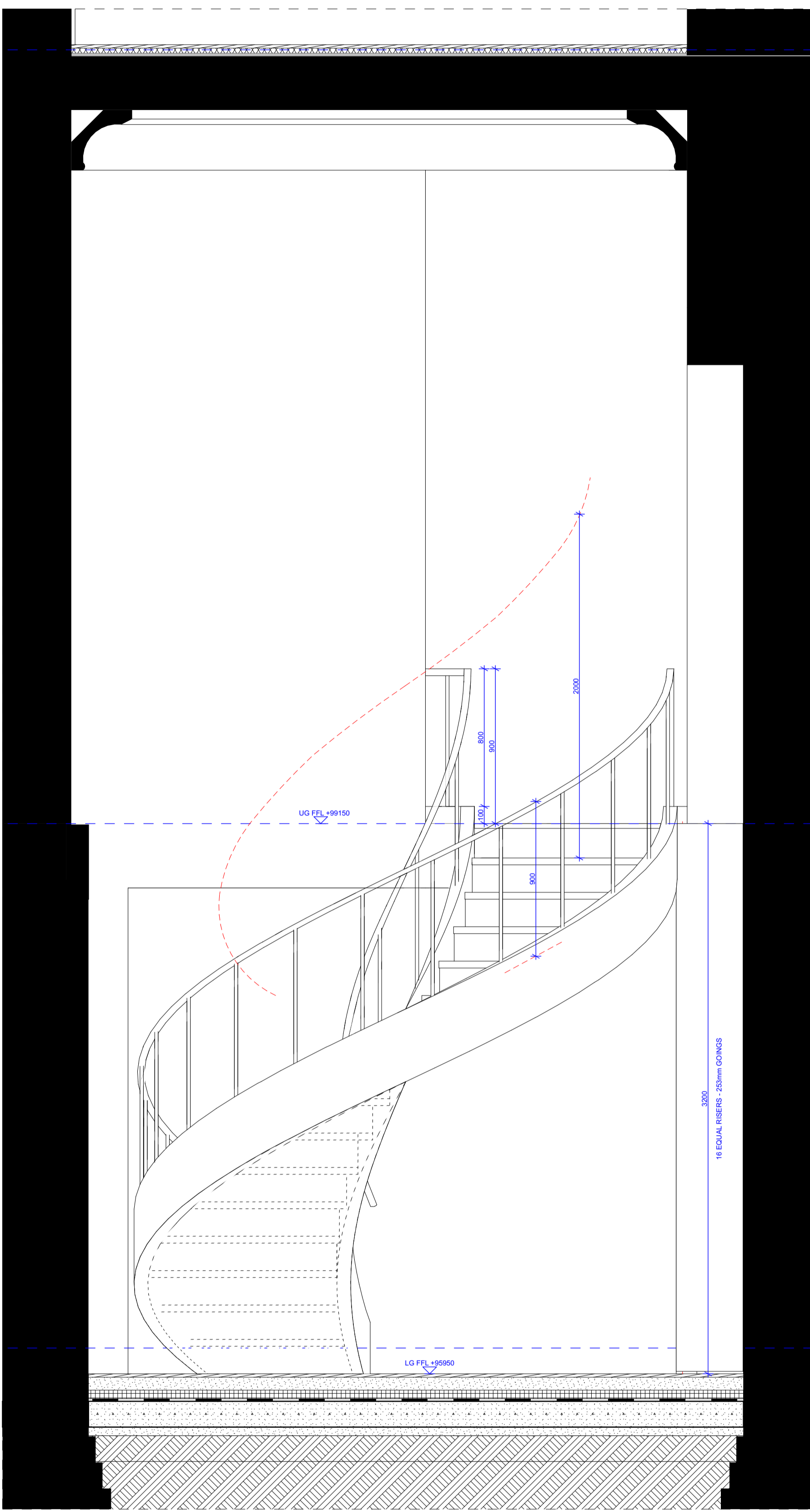


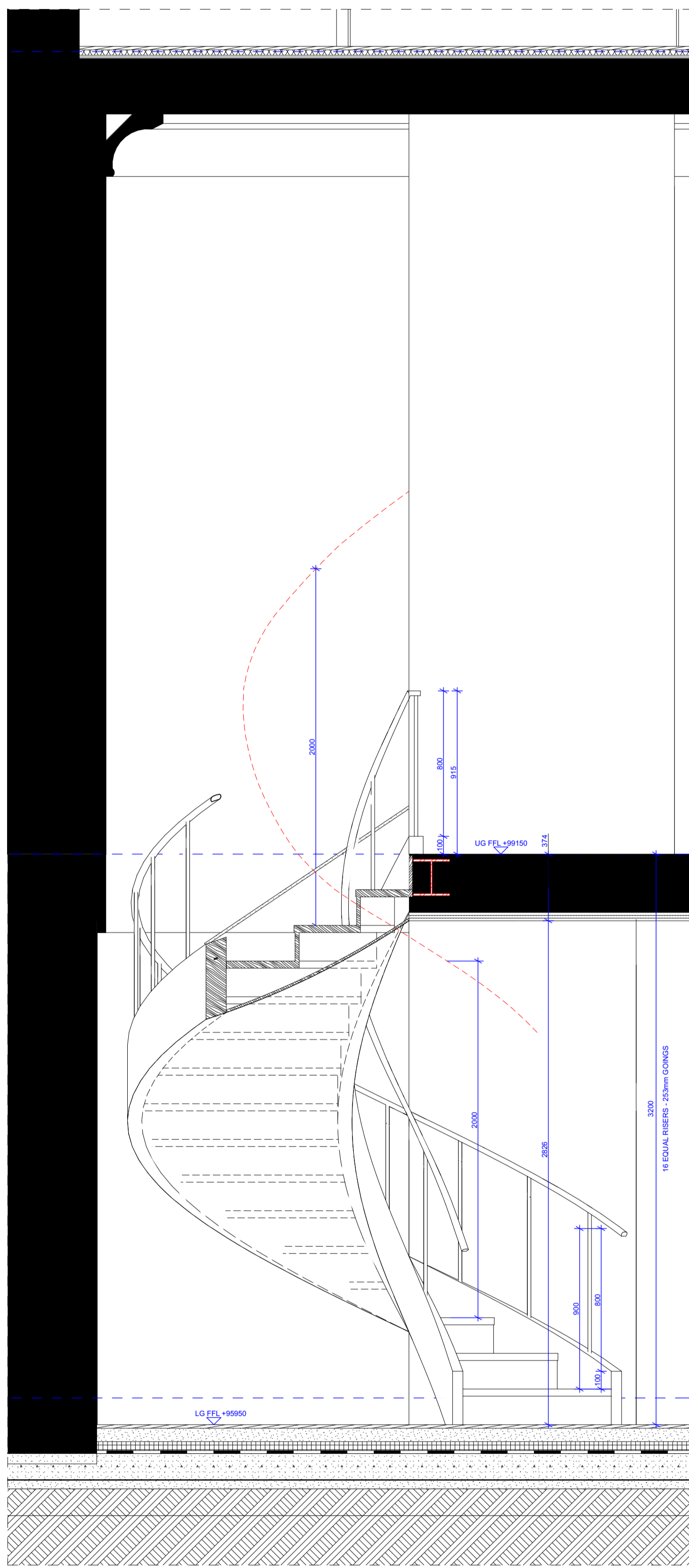
KH_LEVEL LG 1:20



KH_LEVEL UG 1:20



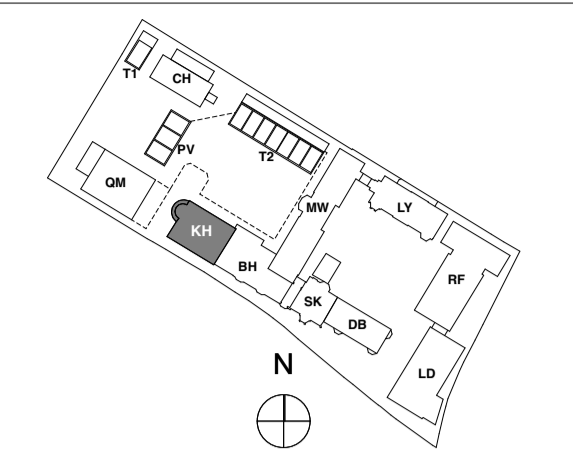
A-A 1:20



B-B 1:20



0 10 50 100mm
DIMENSION AT ORIGINAL SHEET SIZE
Contractors must check all dimensions on site. Only figured dimensions are to be worked from. Discrepancies must be reported to the Architect before proceeding. © This drawing is Copyright



KEY PLAN
NOTE:

FOR CONSTRUCTION

REVISION	DRN	CHKD	DATE
C1 Issued for Construction	GS	TW	17/01/2017

A&Q
PARTNERSHIP

CLIENT
MOUNT ANVIL LTD



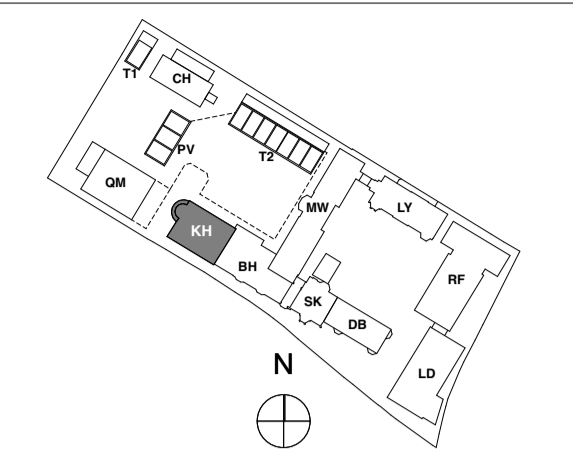
PROJECT
KIDDERPORE AVENUE

DRAWING
Kidderpore Hall
LG-UG Stair 1

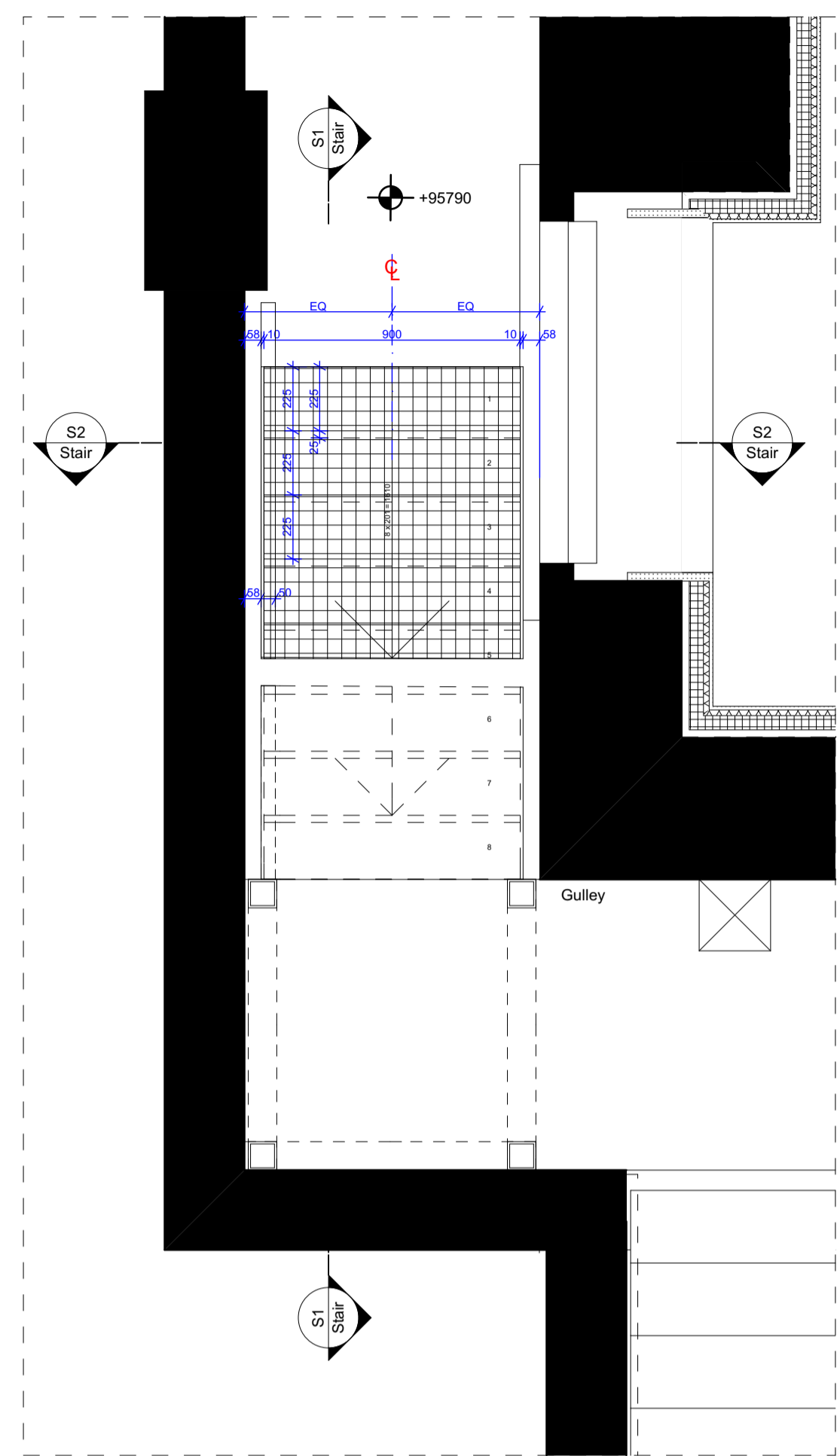
SCALE 1:20 @ A1 DATE January 2017

DRAWING No. 15 230 DRAWN BY GS
9000-DRG-01KH-AL001 REV C1

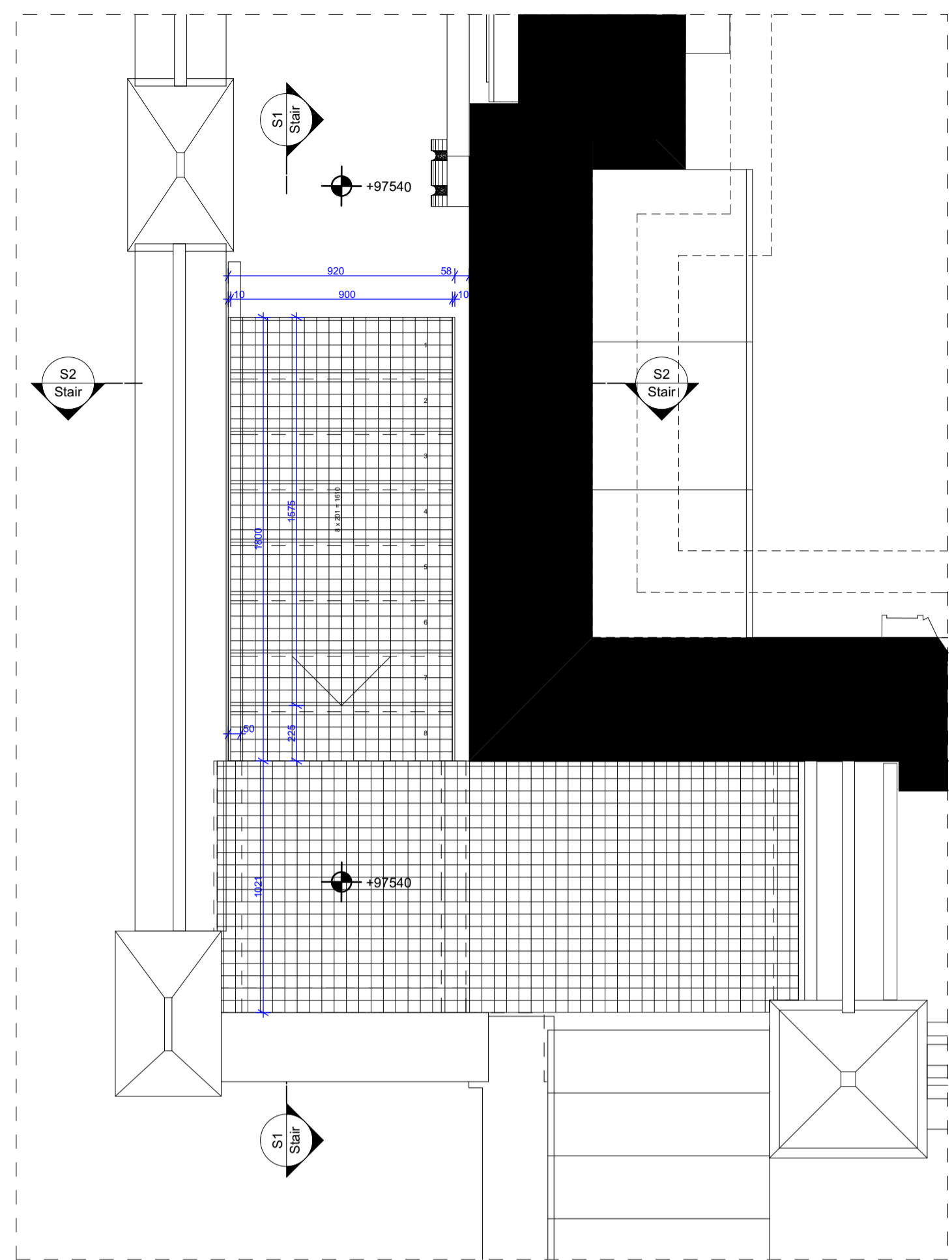
A & Q PARTNERSHIP (LONDON) LTD
THE LUX BUILDING, 2-4 HOXTON SQUARE, LONDON N1 6 NU
Tel: 020 7613 2244 Fax: 020 7613 2642 Email: london@aqp.co.uk
ARCHITECTURE DESIGN MASTERPLANNING INTERIORS



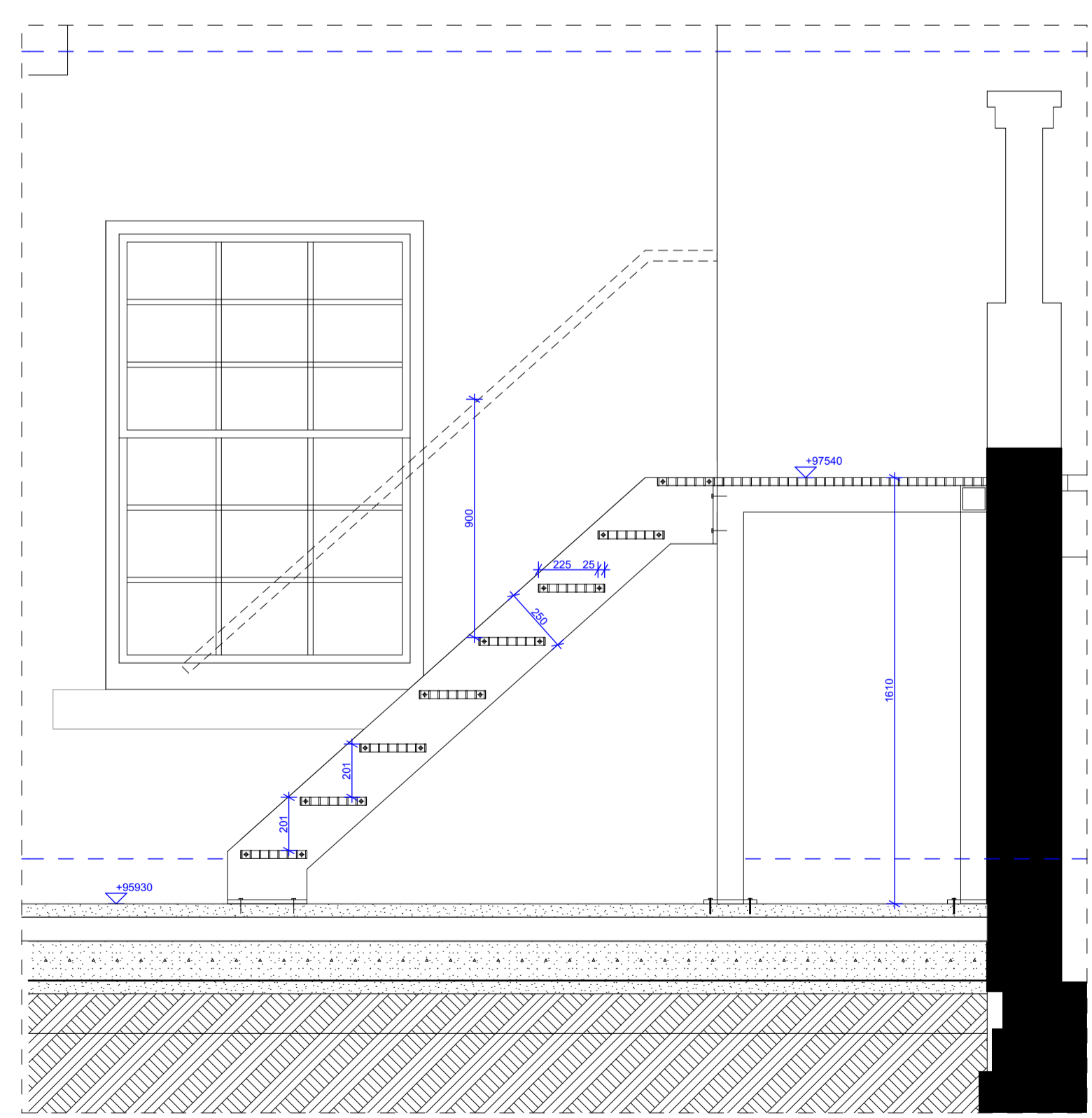
KEY PLAN
NOTE:



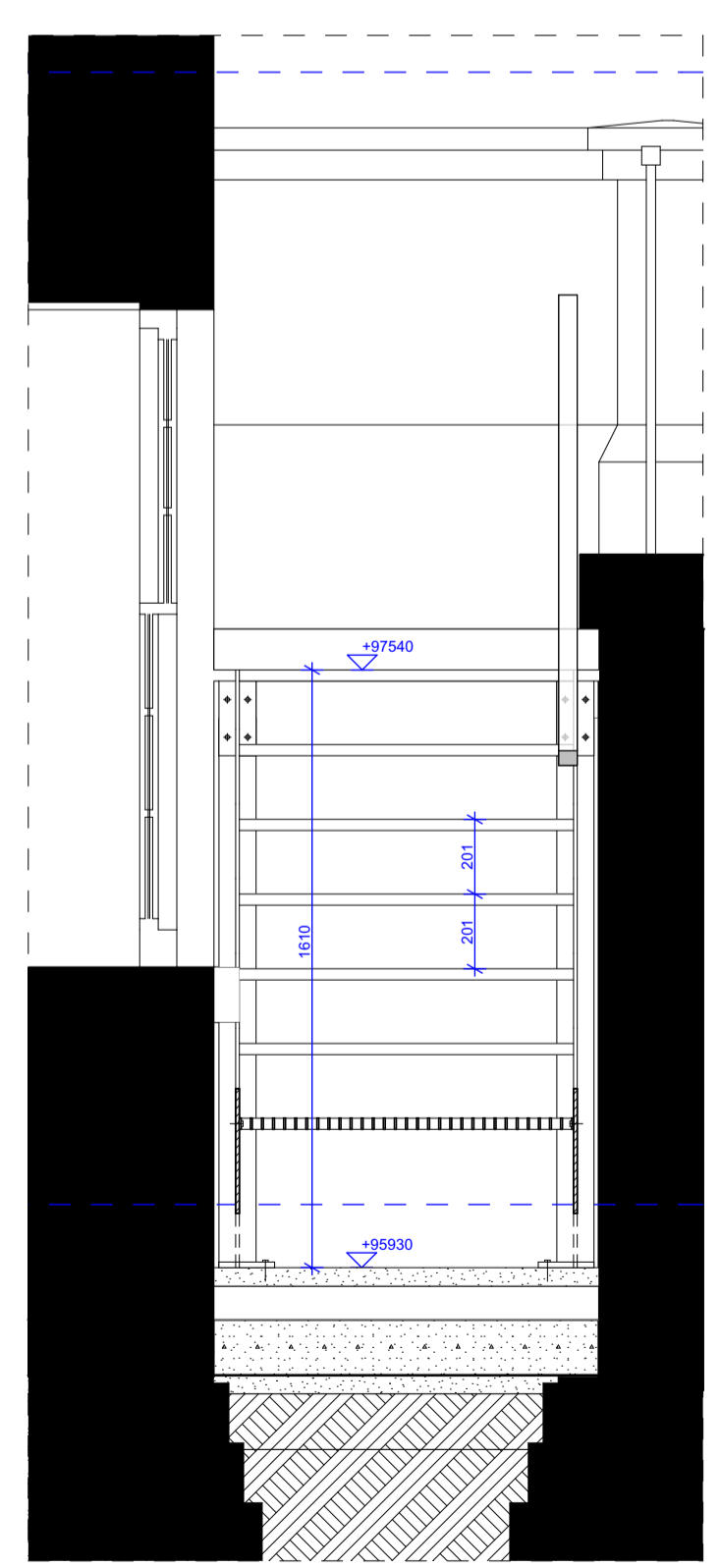
KH_LEVEL LG 1:20



KH_LEVEL UG 1:20



S3 1:20



S5 1:20

FOR CONSTRUCTION

REVISION	DRN	CHKD	DATE
C1 Issued for Construction	GS	TW	17/01/2017



CLIENT
MOUNT ANVIL LTD

PROJECT
KIDDERPORE AVENUE

DRAWING
Kidderpore Hall
LG West Lightwell Stairs

SCALE 1:20 @ A1 DATE January 2017

DRAWING No. 15 230 DRAWN BY GS
9000-DRG-01KH- AL003 REV C1

A & Q PARTNERSHIP (LONDON) LTD
THE LUX BUILDING, 2-4 HOXTON SQUARE, LONDON N1 6 NU
Tel: 020 7613 2244 Fax: 020 7613 2642 Email: london@aqp.co.uk
ARCHITECTURE DESIGN MASTERPLANNING INTERIORS