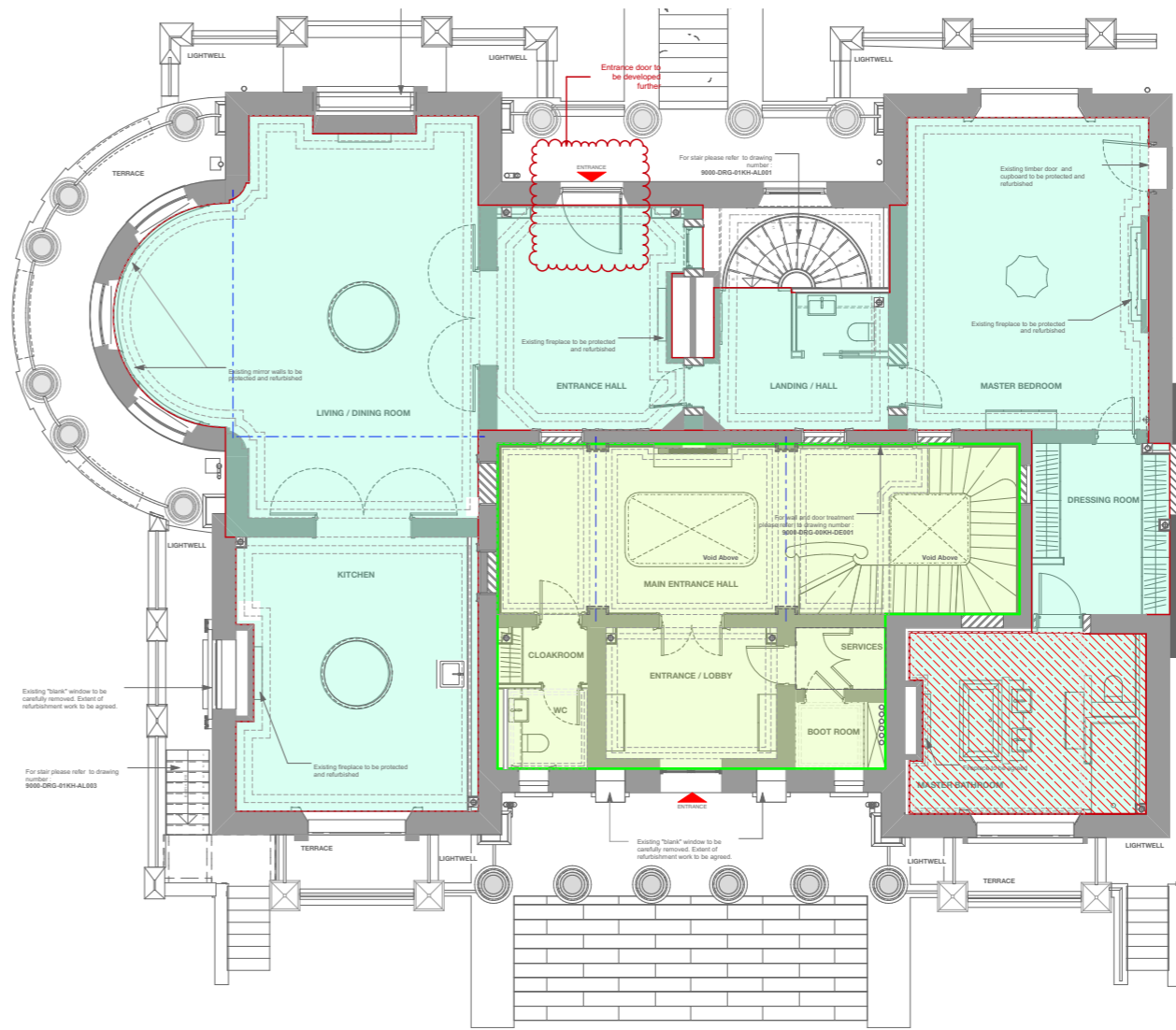
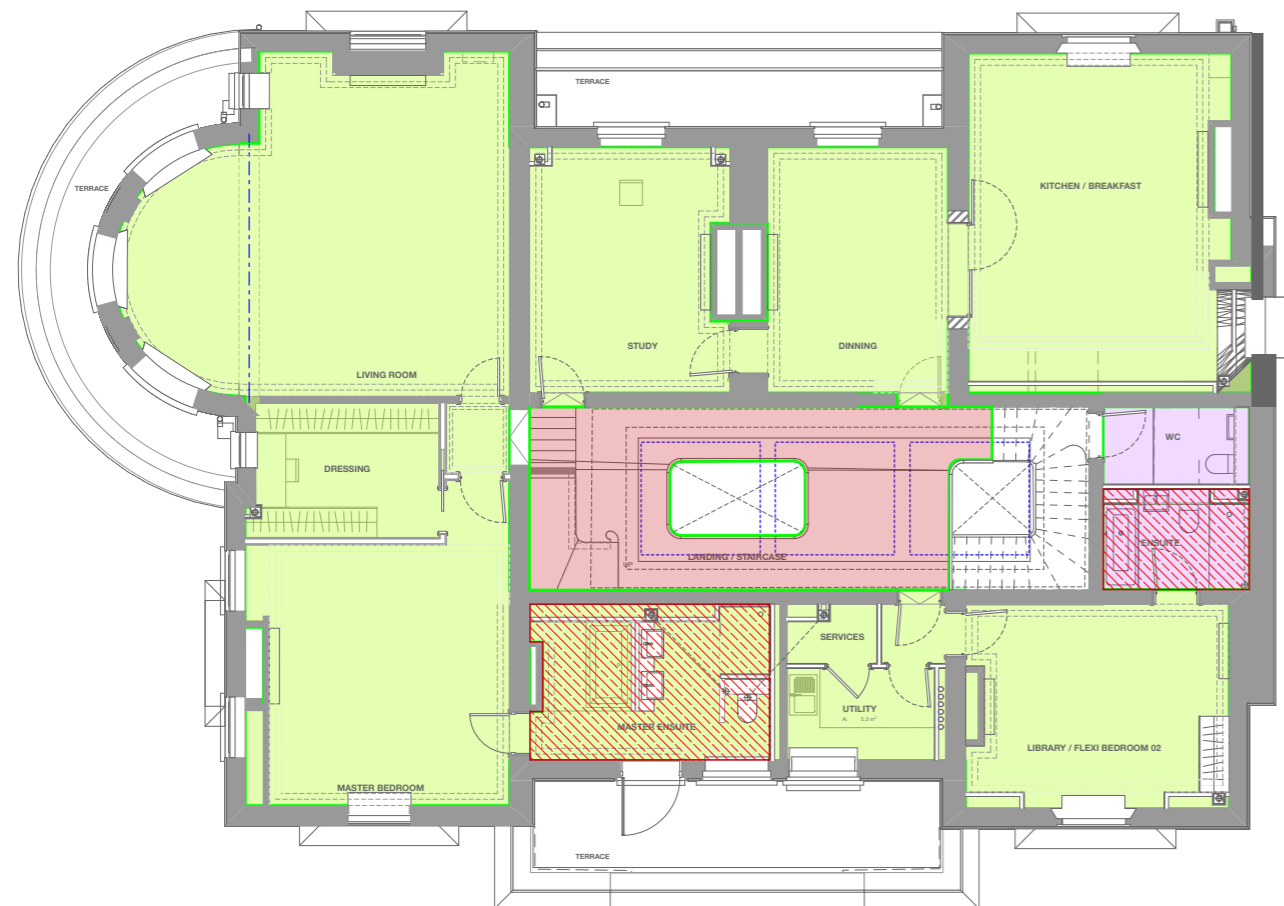


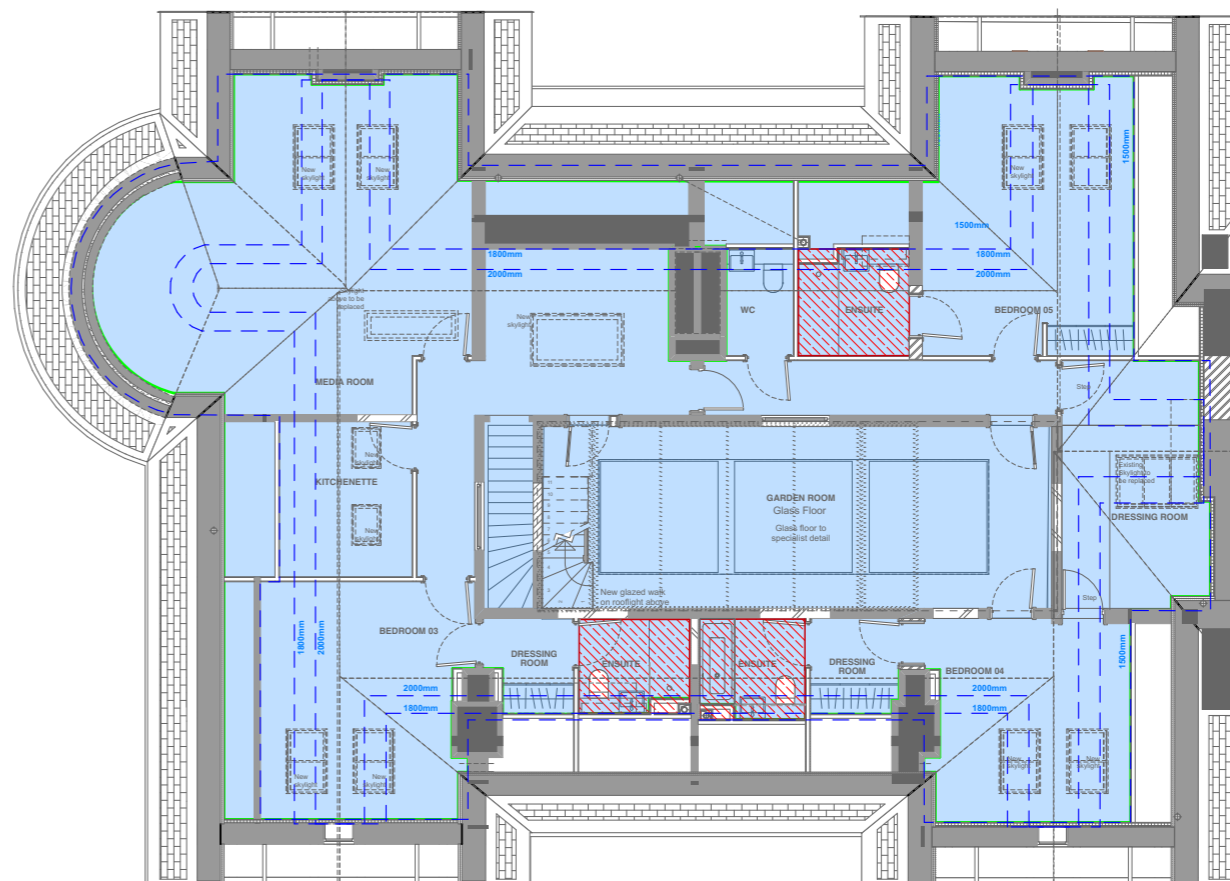
KH_LOWER GROUND FLOOR



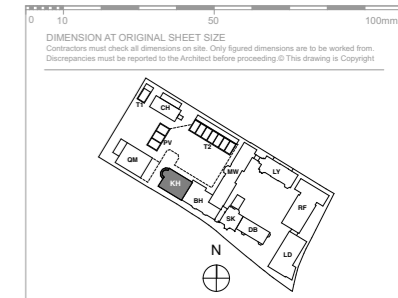
KH_UPPER GROUND FLOOR



KH_FIRST FLOOR



KH_SECOND FLOOR



KEY PLAN
NOTE: ALL INFORMATION SHOWN ON THIS DRAWINGS IS SUBJECT TO DESIGN DEVELOPMENT

Floor Type Legend:

- GHHF01 - New Ground Bearing Slab
- GHHF01A - New Ground Bearing Slab (UFH)
- KHFF04 - Upper Ground Upgrade
- KHFF04A - Upper Ground Upgrade (UFH)
- KHFF01 - Upper Ground Upgrade
- KHFF02 - Level 1 Upgrade
- KHFF02A - Level 1 Upgrade (UFH)
- KHFF06 - Level 1 Upgrade
- KHFF03 - Level 1, New Joists
- KHFF03A - Level 1, New Joists (UFH)
- KHFF05 - Level 2
- KHFF05A - Level 2 (UFH)

Refer to Drawings 9000-DRG-00KH-DE004 & DE005 for Floor Details

FOR CONSTRUCTION

REVISION	DRN	CHKD	DATE
C1 Issued for Construction	NV	TW	17/01/2017



CLIENT: MOUNT ANVIL LTD
PROJECT: KIDDERPORE AVENUE
DRAWING: Kidderpore Hall Floor Type Reference Plans

SCALE: 1:150 @ A3 DATE: January 2017
DRAWING No.: 15 230 9000-DRG-00KH- DE006
DRAWN BY: NV
REV: C1
A & Q PARTNERSHIP (LONDON) LTD
THE LUX BUILDING, 2-4 HOXTON SQUARE, LONDON N1 6 NU
Tel: 020 7613 2244 Fax: 020 7613 2642 Email: london@aqp.co.uk
ARCHITECTURE DESIGN MASTERPLANNING INTERIORS