

GENERAL NOTE:

Master Ensuite Wardrobes: Internal fittings include rails, lighting, shelves and drawers.

Secondary Bedrooms: Hanging rails and shelving
Double downlights to enclosed kitchens and Walk-in wardrobes only

NOTE

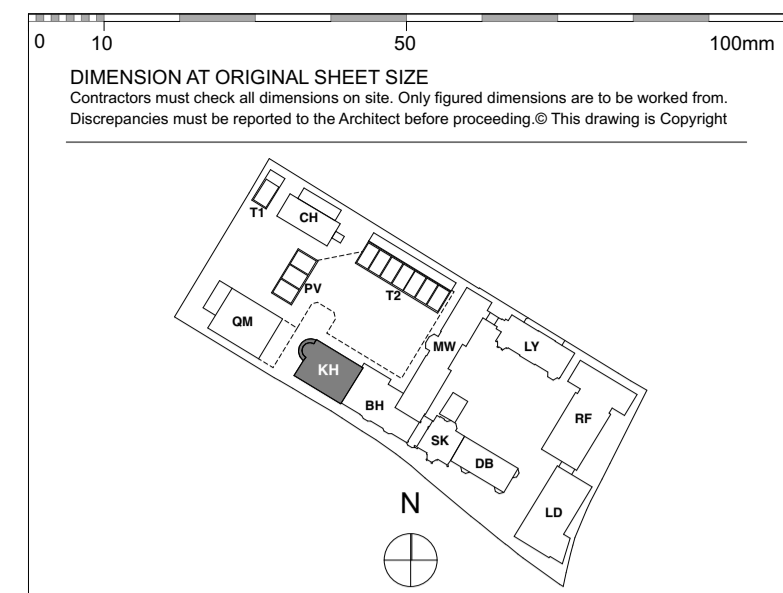
To be read in conjunction with MKP Drawings

Refer to MKP drawings for Utility cupboard, kitchen and electrical layouts.

Wiring for pendant lights in Living, Dining and Master Bedroom.

Wiring for speaker system in Living, Dining, kitchen and Master Bedroom, for future installation of speakers by customer.

Please provide wiring for electrical Blinds



KEY PLAN

NOTE:

LEGEND	
	Switch
	2 way switch
	3 way switch
	Switch dimmer
	Pendant light
	Modular luminaire
	Linear Luminaire
	Single directional downlights
	Double directional downlights
	Wall light, internal
	Recessed low energy LED downlighter
	LED strip lighting to wardrobes & under wall units
	Wall light, external
	Recessed wall lights at floor level
	Wall light with sensor
	Double socket
	Samp switch sockets for lamp circuit
	Multi-gang switch for kitchen appliances
	Shaver socket
	Video entrophyne and intercom
	TV media plate. Refer to M&E specification
	BT phone & data point
	Floor recessed outlet
	Smoke detector
	Heat detector
	PIR presence detector
	Emergency Light
	Fire Detector
	Fire Detector Sounder base & flashing beacon
	Manual Fire alarm call point
	Thermostat
	PopUp Socket and USB Port
	Recessed uplighter
Ceiling Info.	
	Cornice or Ceiling ornament
	Curtain Recess
	Existing Cornice
	Cornice segment to be removed
	Proposed Cornice to match existing
	New Cornice
	Extractor
	Air supply in
	Linear slot diffuser for supply & extract air

FOR CONSTRUCTION

REVISION	DRN	CHKD	DATE
C1 Issued for Construction	NV	TW	17/01/2017
C2 Amended as Clouded	NV	KC	03/02/2017



CLIENT
MOUNT ANVIL LTD

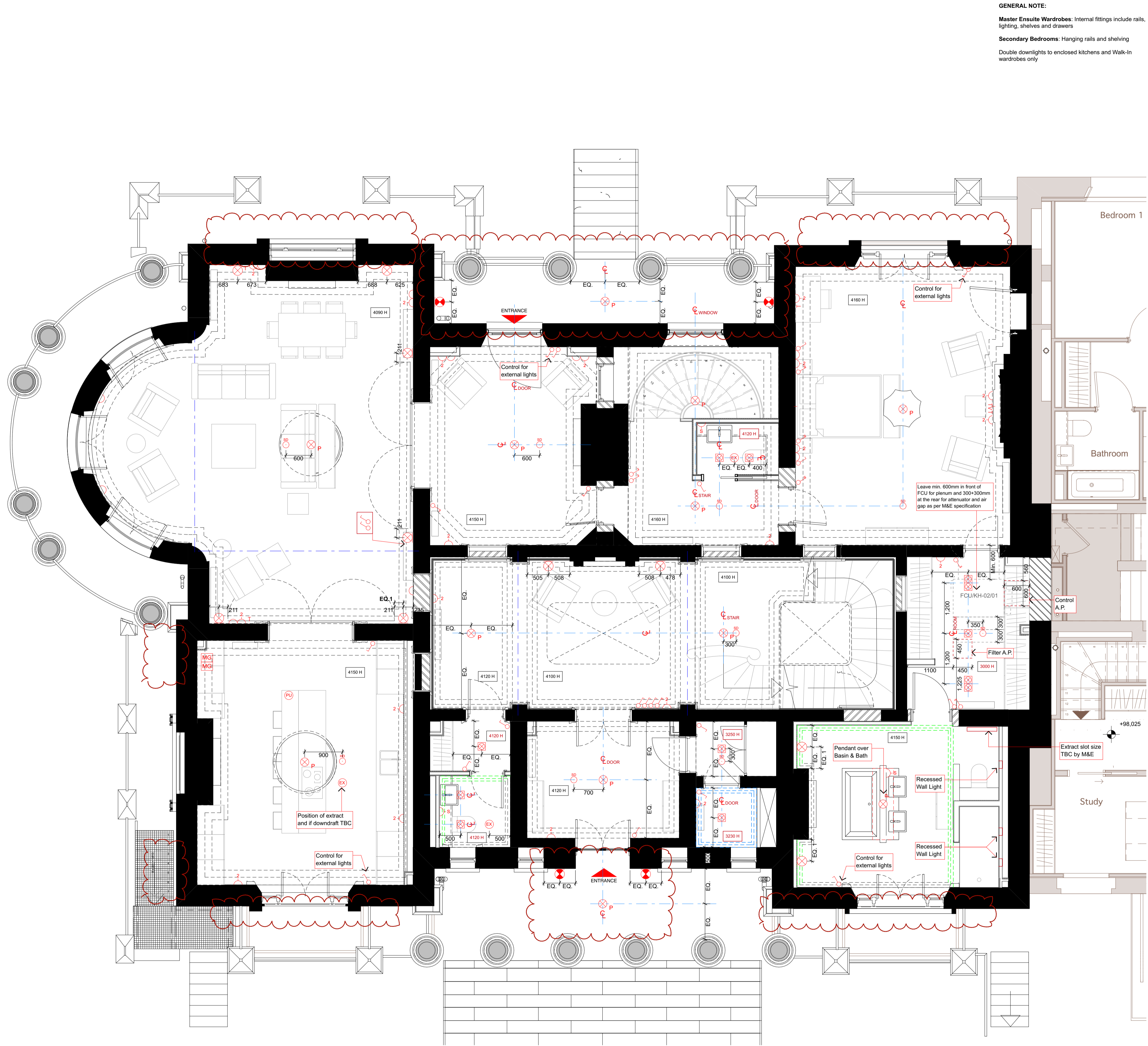
PROJECT
KIDDERPORE AVENUE

DRAWING
Kidderpore Hall
Level LG RCP

SCALE 1:50 @ A1 DATE February 2017

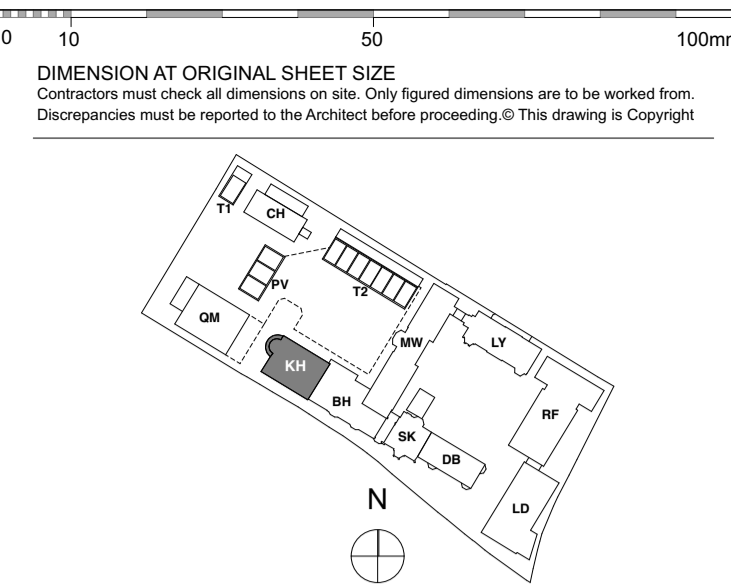
DRAWING No. 15 230 DRAWN BY NV
9000-DRG-23KH-LG030 REV C2

A & Q PARTNERSHIP (LONDON) LTD
THE LUX BUILDING, 2-4 HOXTON SQUARE, LONDON N1 6 NU
Tel: 020 7613 2244 Fax: 020 7613 2642 Email: london@aqp.co.uk
ARCHITECTURE DESIGN MASTERPLANNING INTERIORS



GENERAL NOTE:
Master Ensuite Wardrobes: Internal fittings include rails, lighting, shelves and drawers.
Secondary Bedrooms: Hanging rails and shelving.
 Double downlights to enclosed kitchens and Walk-in wardrobes only.

NOTE
 To be read in conjunction with MKP Drawings
 Refer to MKP drawings for Utility cupboard, kitchen and electrical layouts.
 Wiring for pendant lights in Living, Dining and Master Bedroom.
 Wiring for speaker system in Living, Dining, kitchen and Master Bedroom, for future installation of speakers by customer.
 Please provide wiring for electrical Blinds



LEGEND

Switch	PIR presence detector
2 way switch	Emergency Light
3 way switch	Fire Detector
Switch dimmer	Fire Detector Sounder base & flashing beacon
Pendant light	Manual Fire alarm call point
Modular Luminaire	Thermostat
Linear Luminaire	PopUp Socket and USB Port
Single directional downlights	Recessed uplighter
Double directional downlights	
Wall light, internal	
Recessed low energy LED downlighter	
LED strip lighting to wardrobes & under wall units	
Wall light, external	
Recessed wall lights at floor level	
Wall light with sensor	
Double socket	
Shaver socket	
Video entryphone and intercom	
TV media plate. Refer to M&E specification	
BT phone & data point	
Floor recessed outlet	
Smoke detector	
Heat detector	
Comice or Ceiling ornament	
Curtain Recess	
Existing Cornice	
Comice segment to be removed	
Proposed Cornice to match existing	
New Cornice	
Extractor	
Air supply in	
Linear slot diffuser for supply & extract air	

FOR CONSTRUCTION

REVISION	DRN	CHKD	DATE
C1 Issued for Construction	NV	TW	17/01/2017
C2 Amended as Clouded	NV	KC	03/02/2017



CLIENT
 MOUNT ANVIL LTD

PROJECT
 KIDDERPORE AVENUE

DRAWING
 Kidderpore Hall
 Level UG RCP

SCALE 1:50 @ A1 DATE February 2017

DRAWING No. 15 230 DRAWN BY NV
 9000-DRG-23KH-UG030 REV C2

A & Q PARTNERSHIP (LONDON) LTD
 THE LUX BUILDING, 2-4 HOXTON SQUARE, LONDON N1 6 NU
 Tel: 020 7613 2244 Fax: 020 7613 2642 Email: london@aqp.co.uk
 ARCHITECTURE DESIGN MASTERPLANNING INTERIORS

GENERAL NOTE:

Master Ensuite Wardrobes: Internal fittings include rails, lighting, shelves and drawers.

Secondary Bedrooms: Hanging rails and shelving

Double downlights to enclosed kitchens and Walk-in wardrobes only

NOTE

To be read in conjunction with MKP Drawings

Refer to MKP drawings for Utility cupboard, kitchen and electrical layouts.

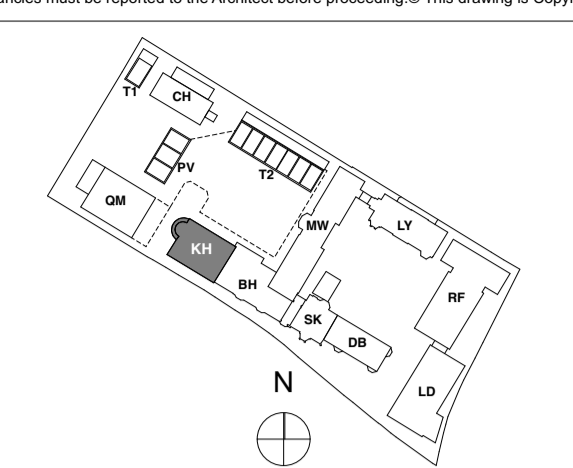
Wiring for pendant lights in Living, Dining and Master Bedroom.

Wiring for speaker system in Living, Dining, kitchen and Master Bedroom, for future installation of speakers by customer.

Please provide wiring for electrical Blinds

0 10 50 100mm

DIMENSION AT ORIGINAL SHEET SIZE
Contractors must check all dimensions on site. Only figured dimensions are to be worked from. Discrepancies must be reported to the Architect before proceeding. © This drawing is Copyright



KEY PLAN

NOTE:

LEGEND	
	Switch
	2 way switch
	3 way switch
	Switch dimmer
	Pendant light
	Modular luminaire
	Linear luminaire
	Single directional downlights
	Double directional downlights
	Wall light, internal
	Recessed low energy LED downlighter
	LED strip lighting to wardrobes & under wall units
	Wall light, external
	Recessed wall lights at floor level
	Wall light with sensor
	Double socket
	Samp switch sockets for lamp circuit
	Multi-gang switch for kitchen appliances
	MG
	Shaver socket
	Video entryphone and intercom
	TV media plate. Refer to M&E specification
	TV
	BT phone & data point
	Floor recessed outlet
	Smoke detector
	Heat detector
	PIR presence detector
	Emergency Light
	Fire Detector
	Fire Detector Sounder base & flashing beacon
	Manual Fire alarm call point
	Thermostat
	PopUp Socket and USB Port
	Recessed uplighter
Ceiling Info.	
	Cornice or Ceiling ornament
	Curtain Recess
	Existing Cornice
	Cornice segment to be removed
	Proposed Cornice to match existing
	New Cornice
	Extractor
	Air supply in
	Linear slot diffuser for supply & extract air

FOR CONSTRUCTION

REVISION	DRN	CHKD	DATE
C1 Issued for Construction	NV	TW	17/01/2017



CLIENT
MOUNT ANVIL LTD

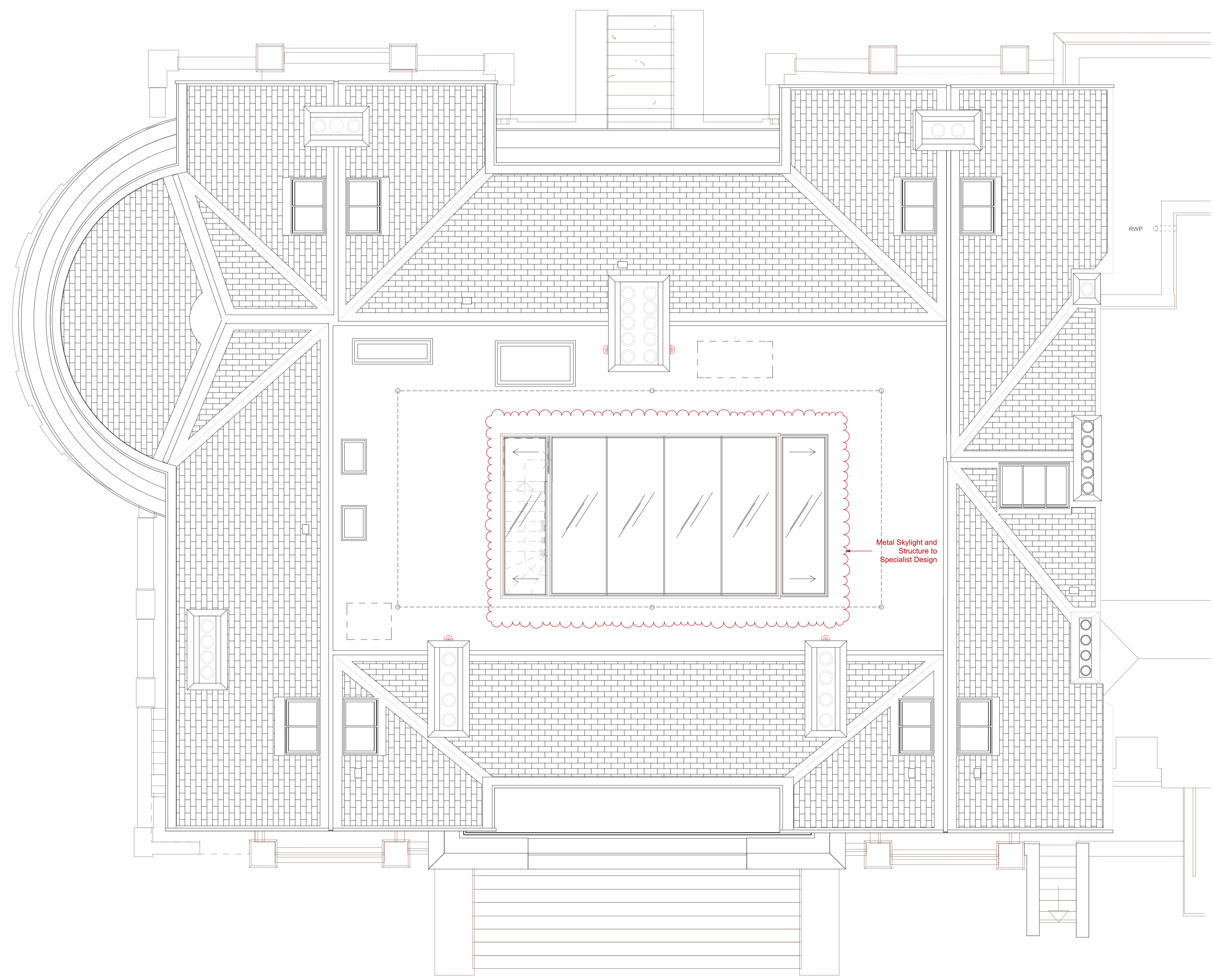
PROJECT
KIDDERPORE AVENUE

DRAWING
Kidderpore Hall
Level RF RCP

SCALE 1:50 @ A1 DATE
January 2017

DRAWING No. 15 230 DRAWN BY NV
9000-DRG-23KH-RF030 REV C1

A & Q PARTNERSHIP (LONDON) LTD
THE LUX BUILDING, 2-4 HOXTON SQUARE, LONDON N1 6 NU
Tel: 020 7613 2244 Fax: 020 7613 2642 Email: london@aqp.co.uk
ARCHITECTURE DESIGN MASTERPLANNING INTERIORS



Date

Name

Client

Project Name

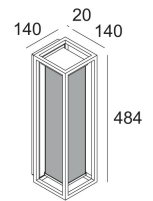
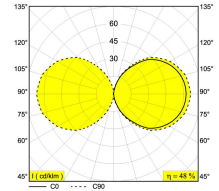
Quote#

Type/Quantity

MONTUR L PC LED

232 318 83

[Weblink](#)



Available colors: ALU GREY (232 318 83 A)
 BLACK (232 318 83 B)

INCL.PC SBL
 INCL.LED CLUSTER 14,7W / CRI>80 / 3000K / 1960lm
 INCL.LED POWER SUPPLY 700mA-DC

LED Technics: Light source: 1960 lm // 14 W // 133 lm/W
 Luminaire: 950 lm // 17 W // 56 lm/W

220-240V / 0|50-60Hz

Class: I

Weight: 2.6 KG
 Protection level: IP54
 Minimum distance: n.a.

For detailed installation instructions, please consult the manual. [232 318 XX HAND.pdf](#)

MONTUR L PC LED
232 318 83

Project picture

