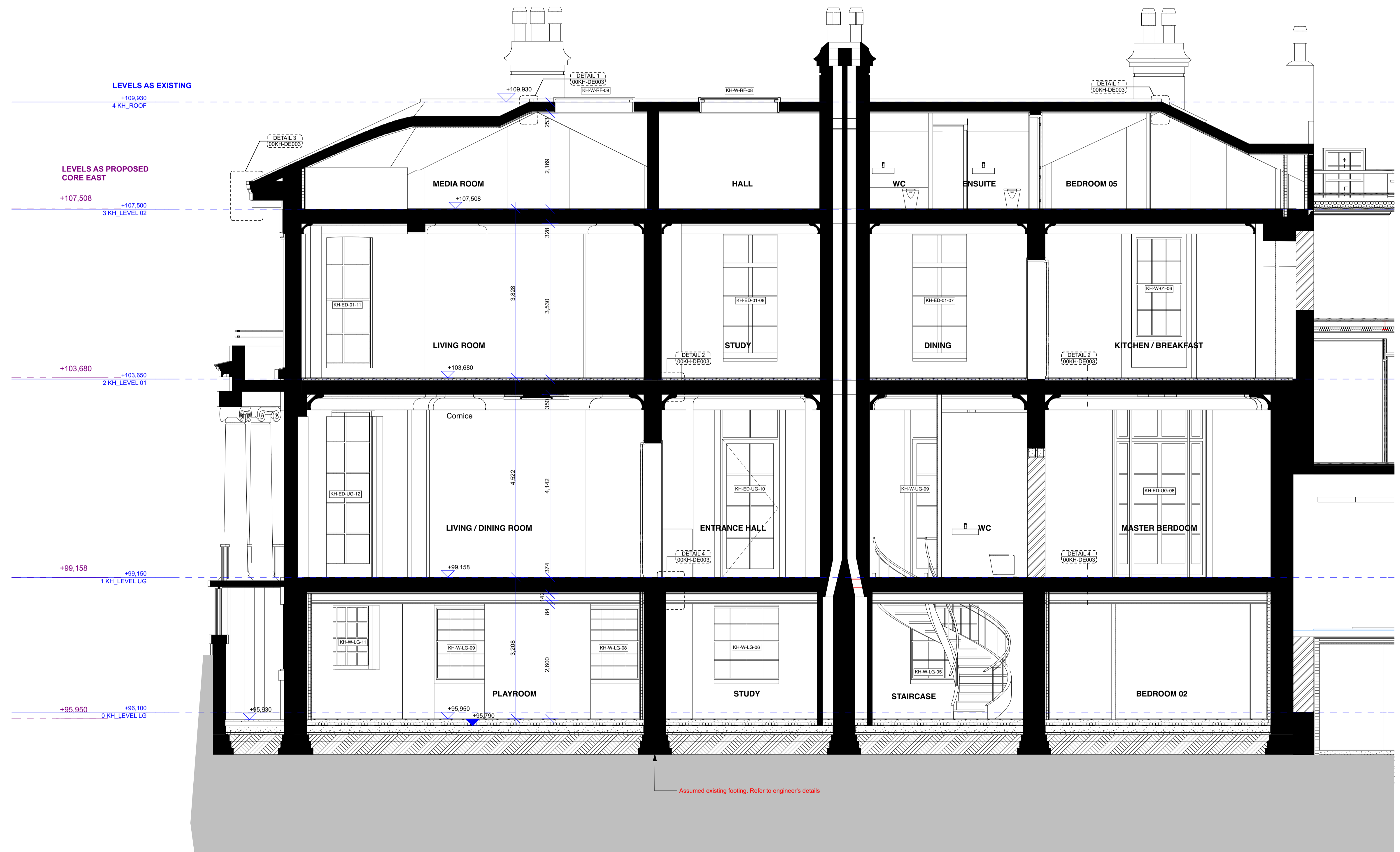
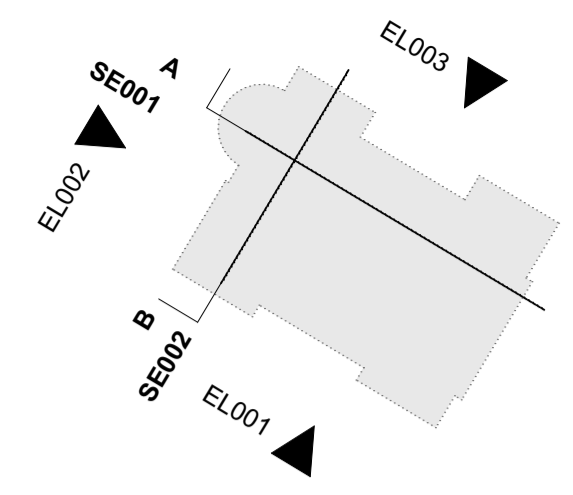


KEY PLAN
NOTE:



Assumed existing footing. Refer to engineer's details

FOR CONSTRUCTION

REVISION	DRN	CHKD	DATE
C1 Issued for Construction	KC/GC/ NV/FC	TW	17/01/2017



CLIENT
MOUNT ANVIL LTD

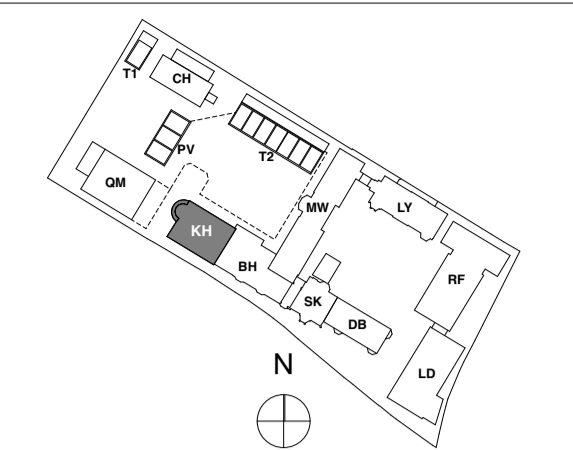
PROJECT
KIDDERPORE AVENUE

DRAWING
Kidderpore Hall
Section A-A As Proposed

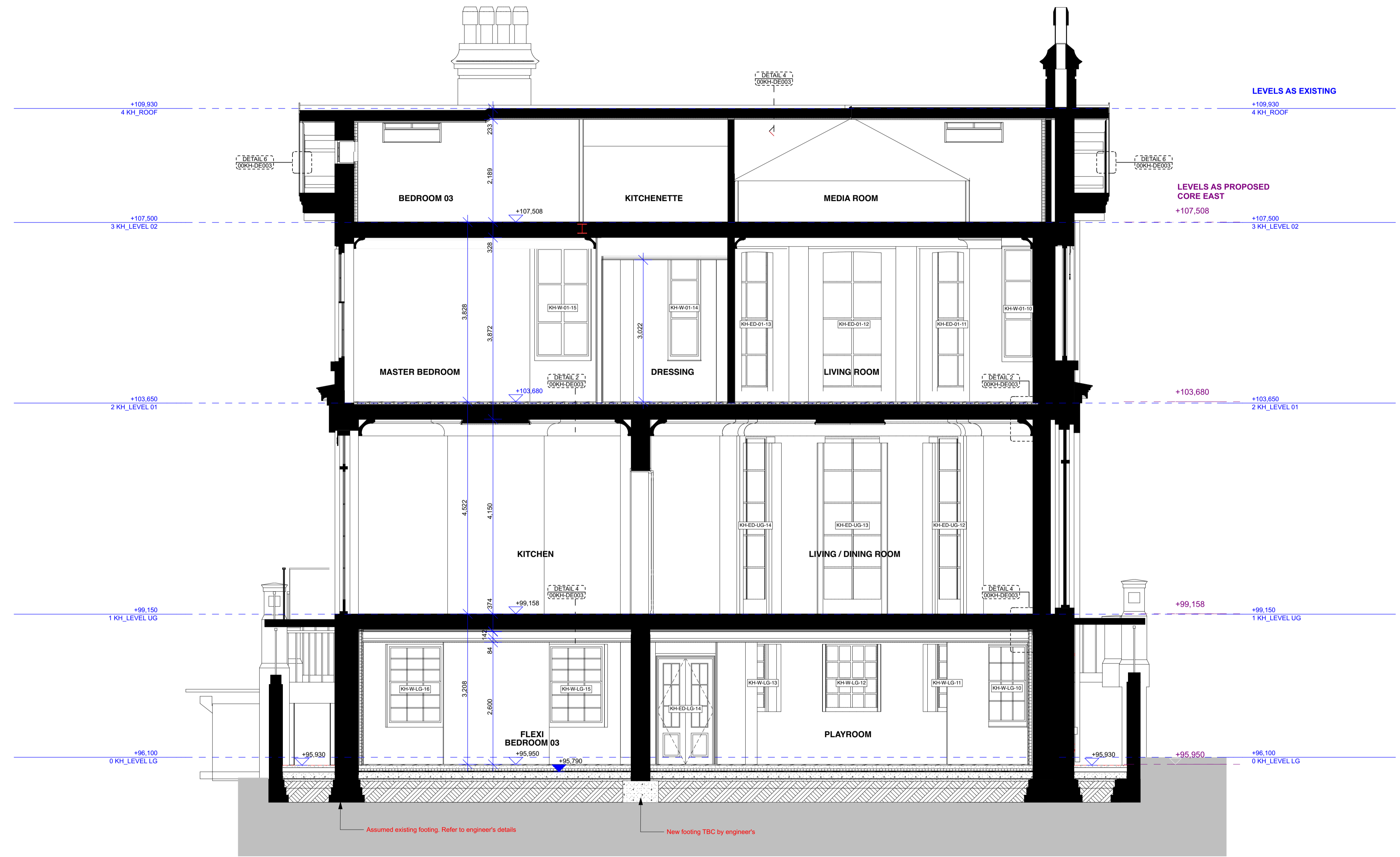
SCALE 1:50 @ A1 DATE
January 2017

DRAWING No. 15 230 DRAWN BY GC
9000-DRG-04KH-SE001 REV C1

A & Q PARTNERSHIP (LONDON) LTD
THE LUX BUILDING, 2-4 HOXTON SQUARE, LONDON N1 6 NU
Tel: 020 7613 2244 Fax: 020 7613 2642 Email: london@aqp.co.uk
ARCHITECTURE DESIGN MASTERPLANNING INTERIORS



KEY PLAN
NOTE:



FOR CONSTRUCTION

REVISION	DRN	CHKD	DATE
C1 Issued for Construction	KC/GC/ NV/FC	TW	17/01/2017



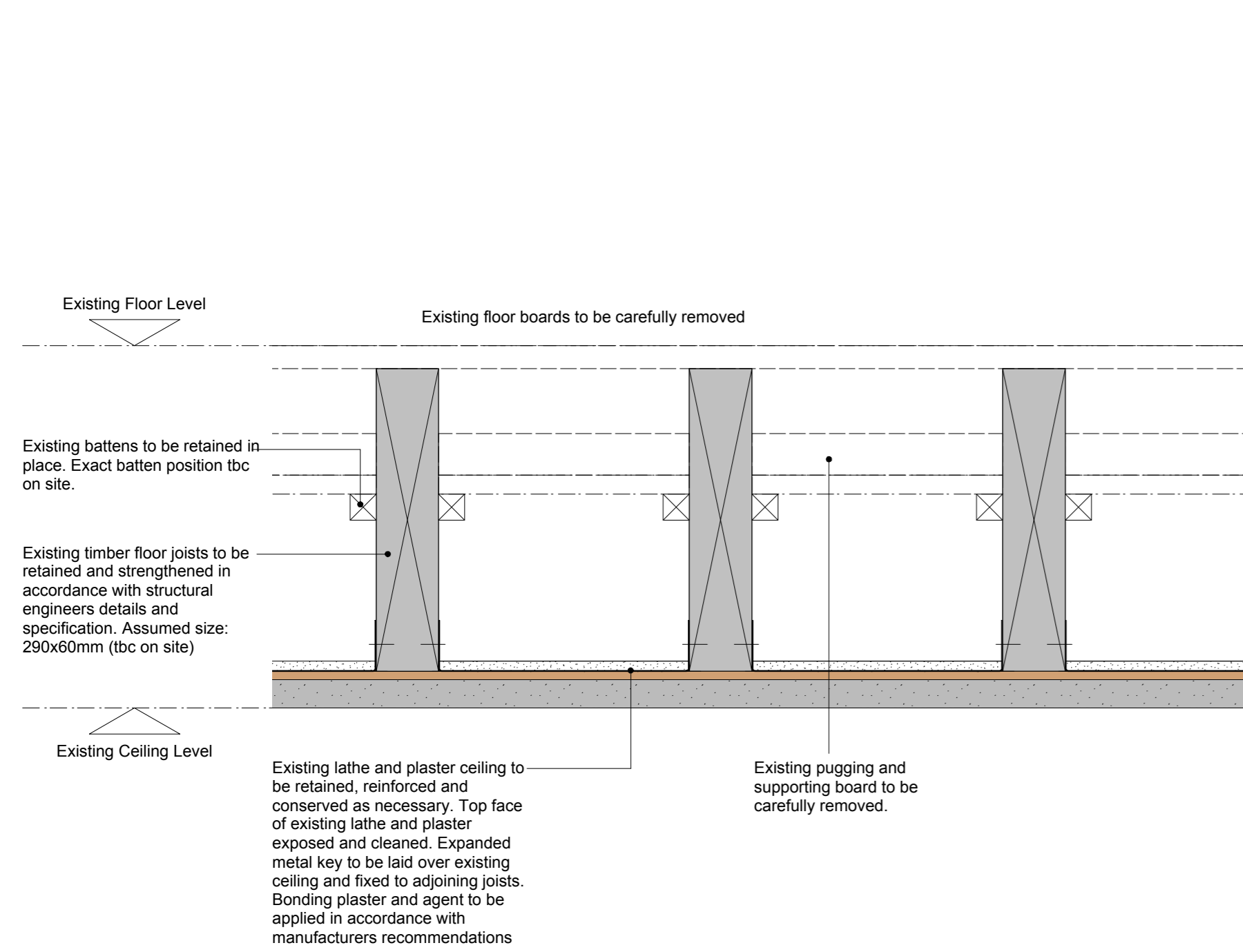
CLIENT
MOUNT ANVIL LTD

PROJECT
KIDDERPORE AVENUE

DRAWING
Kidderpore Hall
Section B-B As Proposed

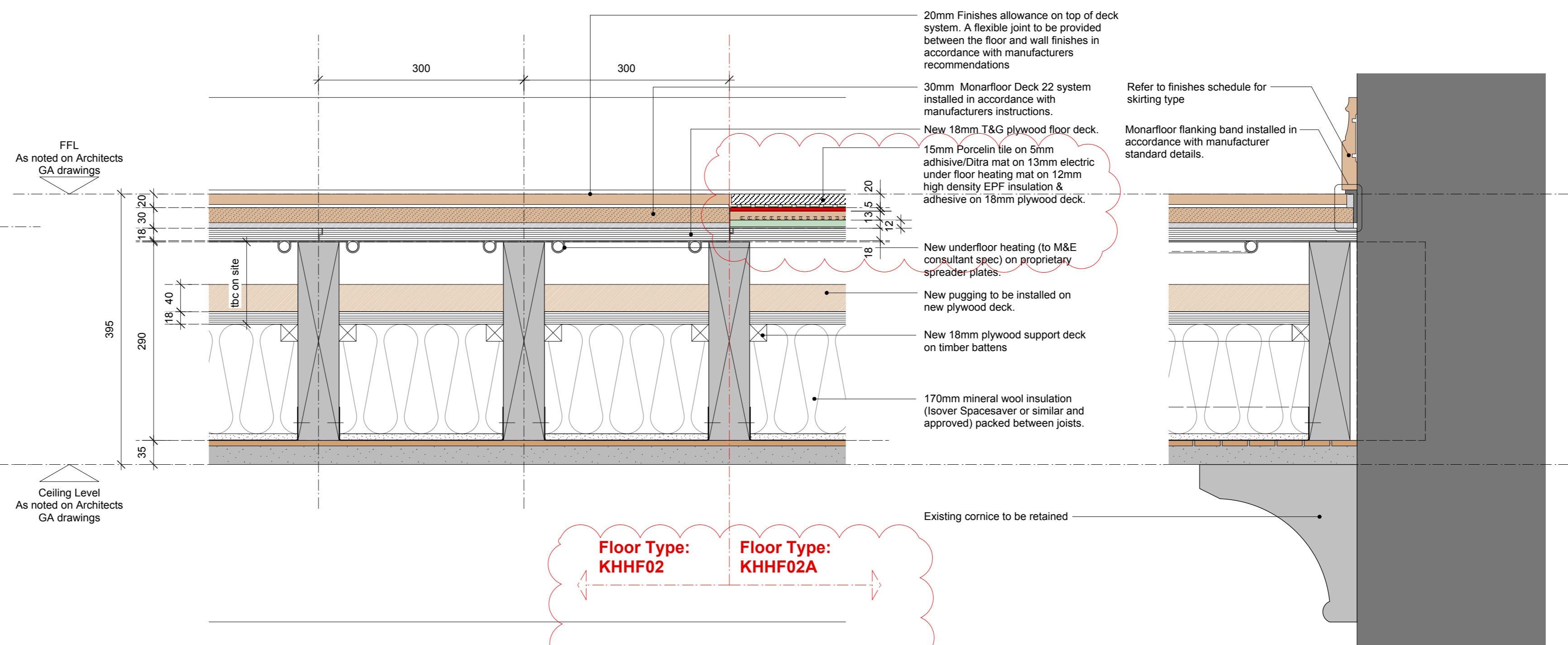
SCALE 1:50 @ A1 DATE January 2017

DRAWING No. 15 230 DRAWN BY GC
9000-DRG-04KH-SE002 REV C1



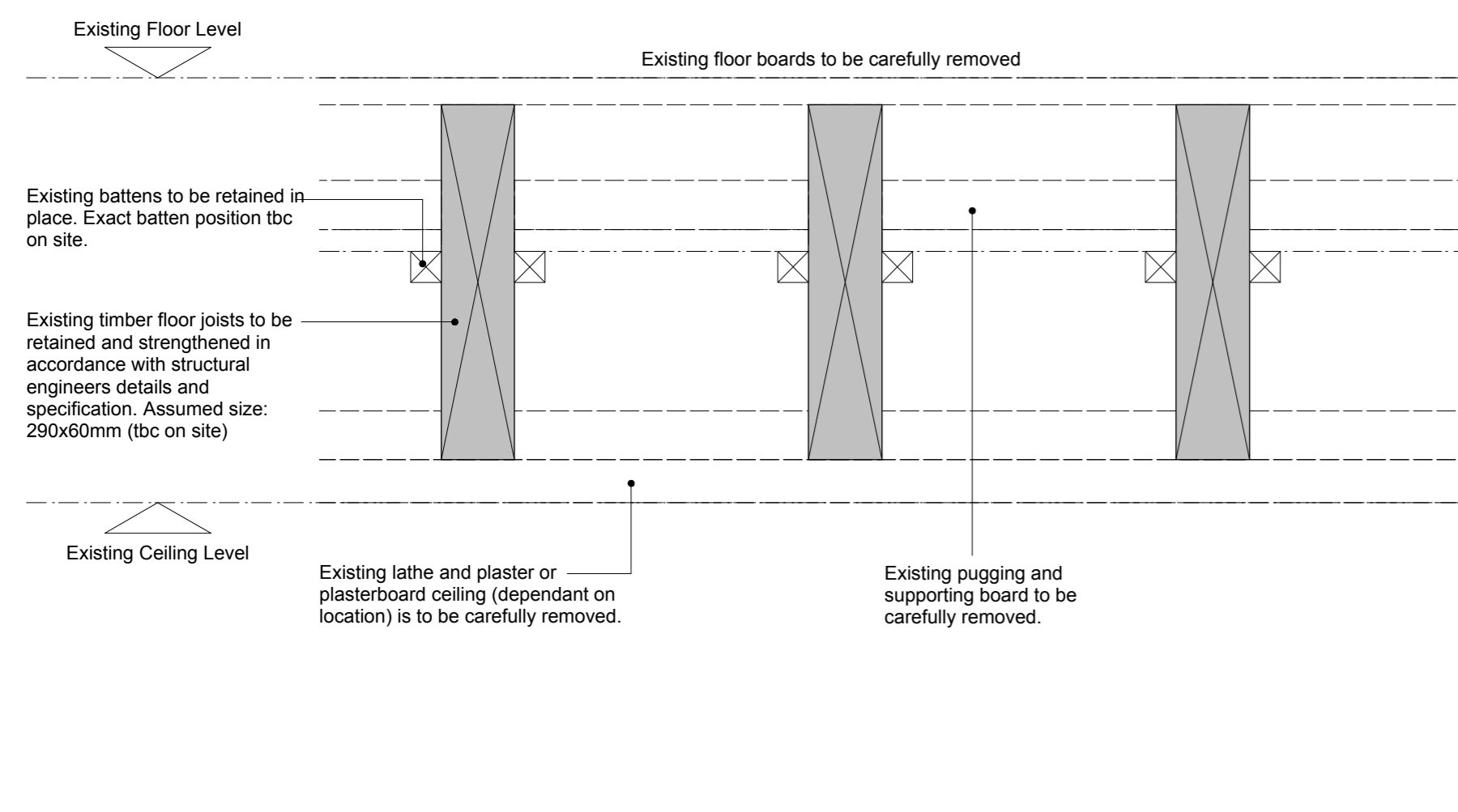
Detail 1: First Floor, Preparation of Existing Floor
1:5 @ A1

FIRST SEPARATING FLOOR FLOOR BUILD UP



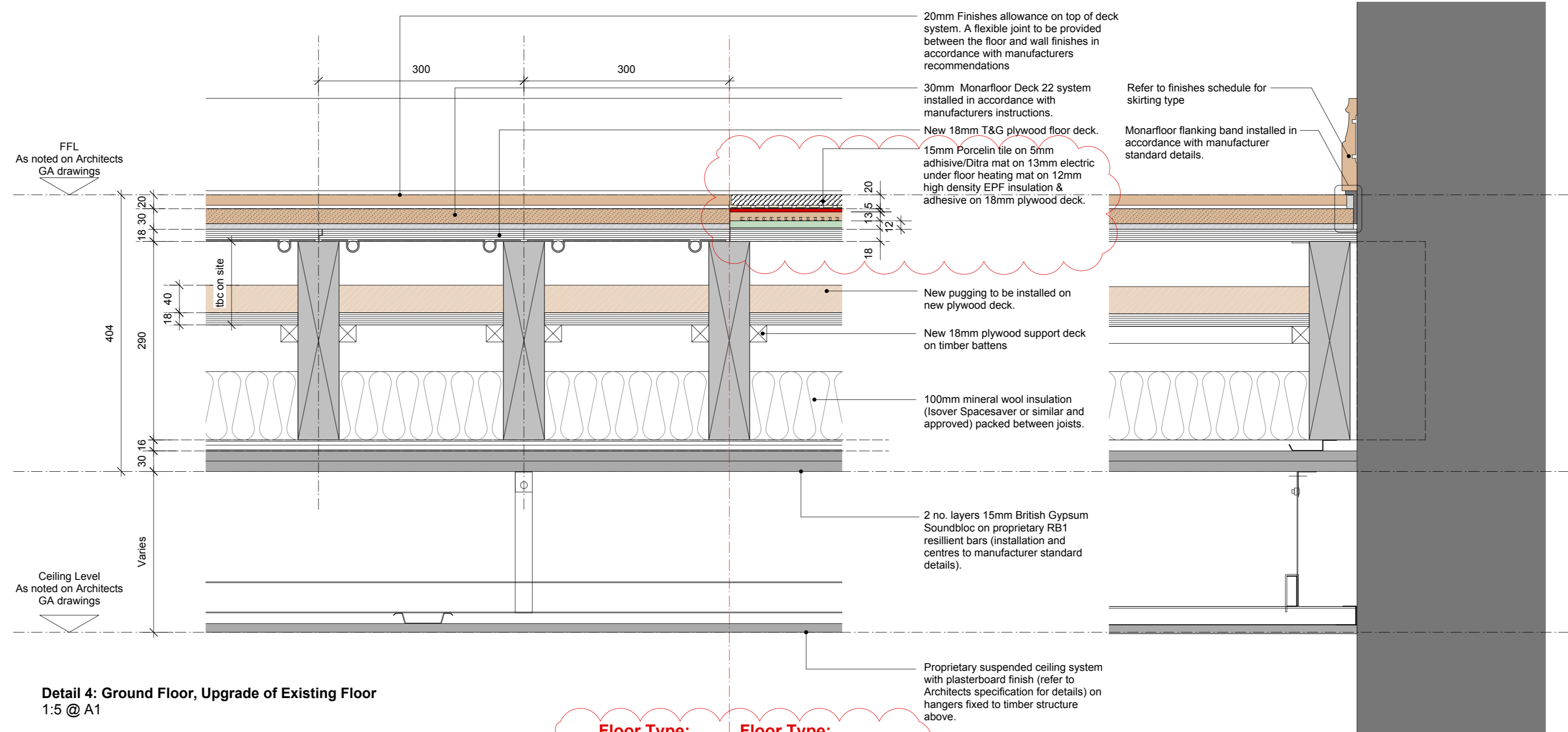
Detail 2: First Floor, Upgrade of Existing Floor
1:5 @ A1

Floor Type: KHHF02
Floor Type: KHHF02A



Detail 3: Ground Floor, Preparation of Existing Floor
1:5 @ A1

GROUND SEPARATING FLOOR FLOOR BUILD UP



Detail 4: Ground Floor, Upgrade of Existing Floor
1:5 @ A1

Floor Type: KHHF01
Floor Type: KHHF01A

Floor Type: KHHF03 - First Floor. (as above but with new timber joists as per structural engineers' specification)
Floor Type: KHHF03A - First Floor. (as above but with new timber joists as per structural engineers' specification)

- Notes:**
1. ALL existing constructions, structure, build ups etc are to be confirmed on site PRIOR to proceeding with the work.
 2. This drawing is to be read in conjunction with all relevant Architect GA drawings and specifications.
 3. This drawing is to be read in conjunction with all relevant drawings and specifications produced by the structural engineer and M&E consultant.
 4. This drawing is to be read in conjunction with the relevant fabric survey produced by ESG.
 5. This drawing is to be read in conjunction with the relevant condition investigation report produced by Hutton & Rostron.

ALL DETAILS TO BE APPROVED BY ACOUSTICIAN PRIOR TO INSTALLATION.

FOR CONSTRUCTION

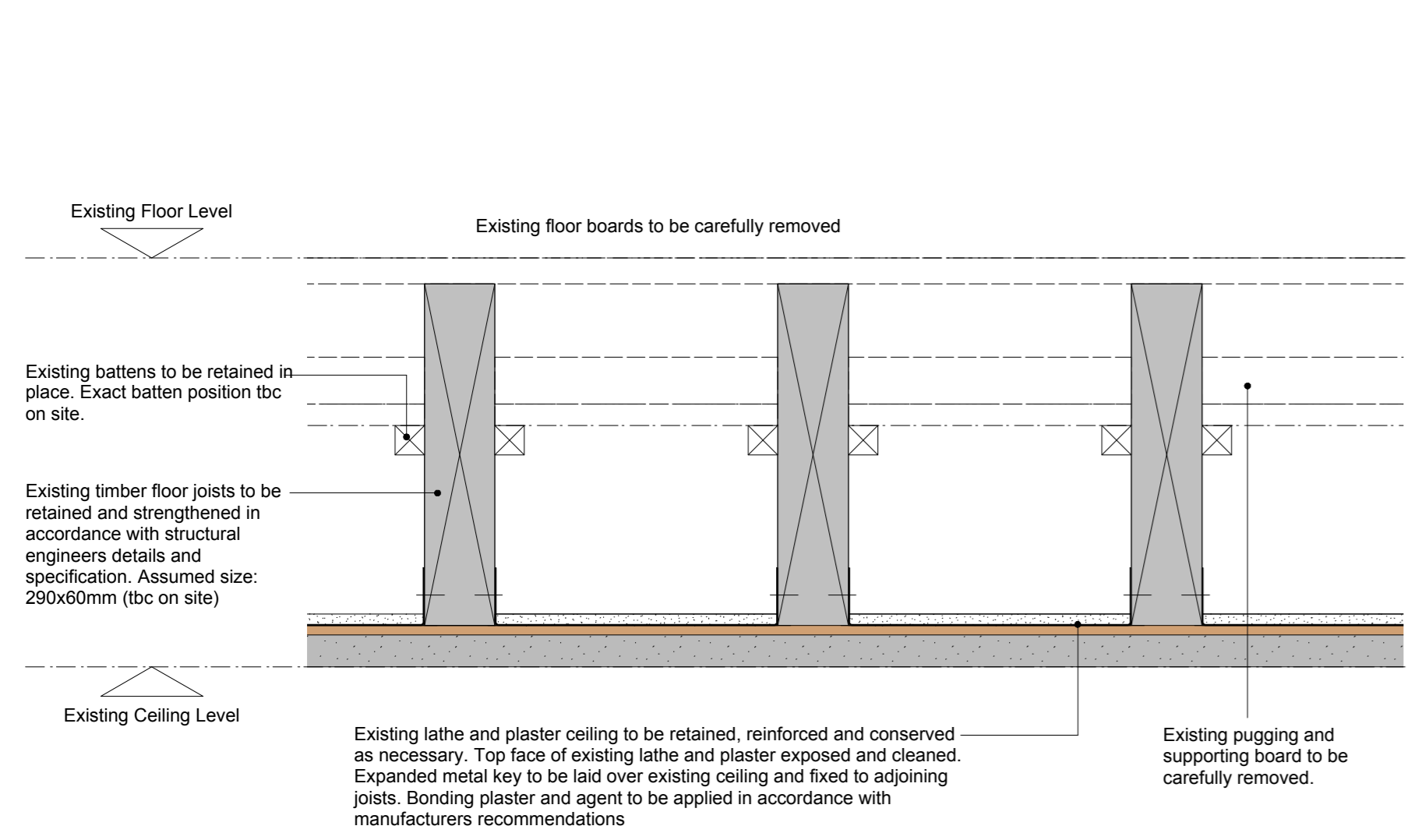
REVISION	DRN	CHKD	DATE
T1 First Issue	ST	TW	18.11.16
C1 Issued for construction	TW		17.01.17



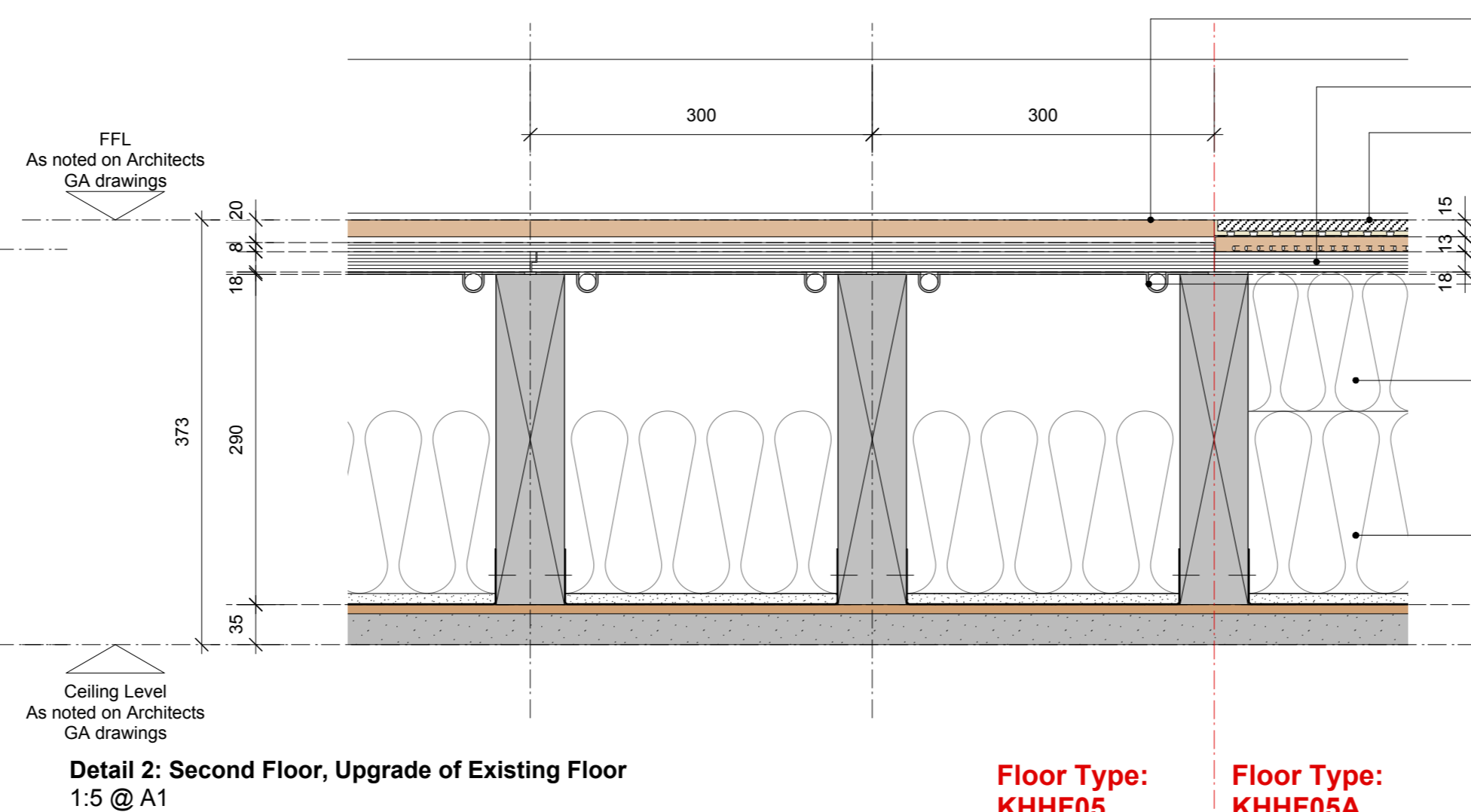
PROJECT
KIDDERPORE AVENUE

DRAWING
Kidderpore Hall
Separating Floor Details

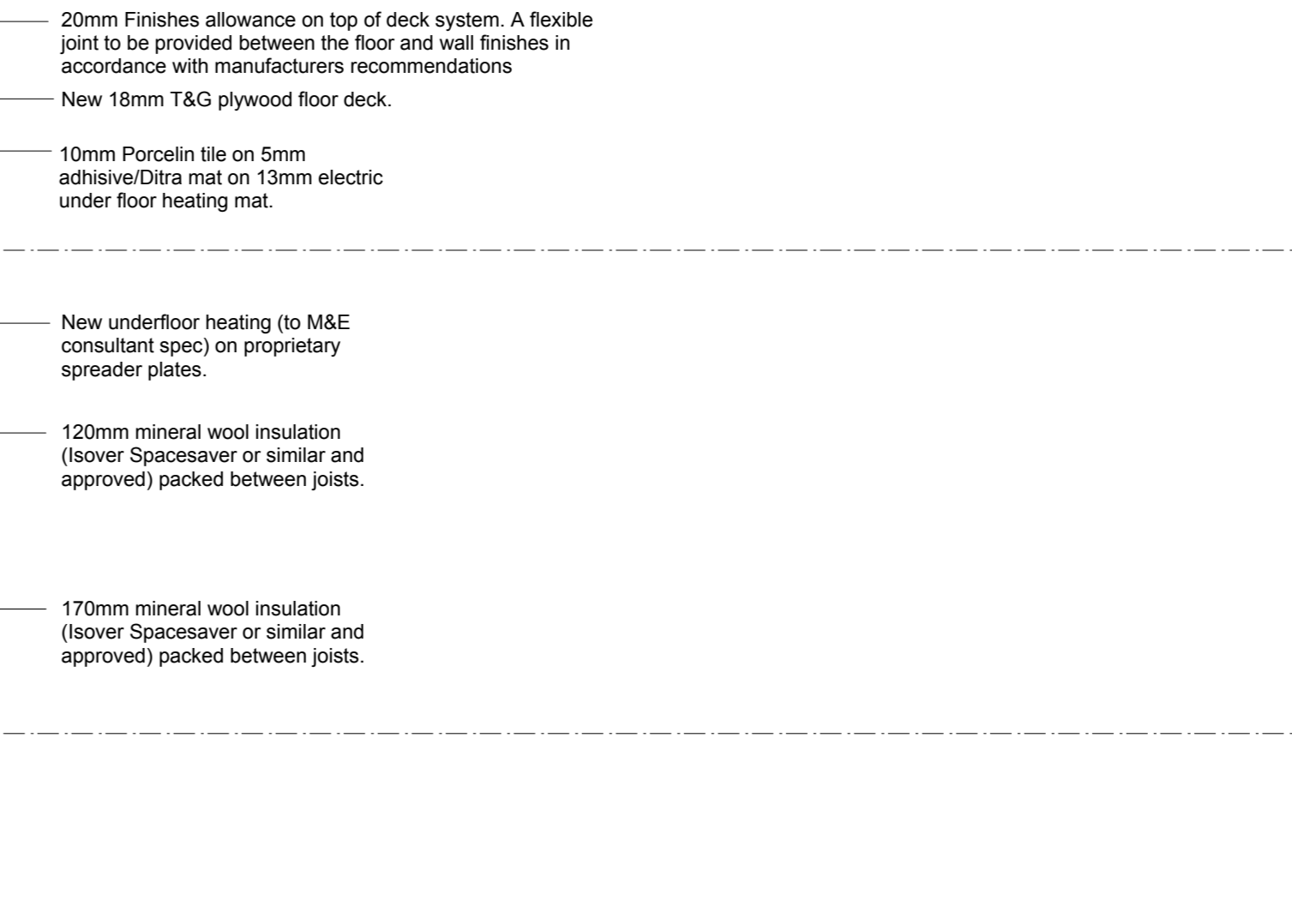
SCALE 1:5 @ A1 DATE Nov 2016
DRAWING No. 15 230 DRAWN BY ST
9000-DRG-00KH-DE004 REVISION C1



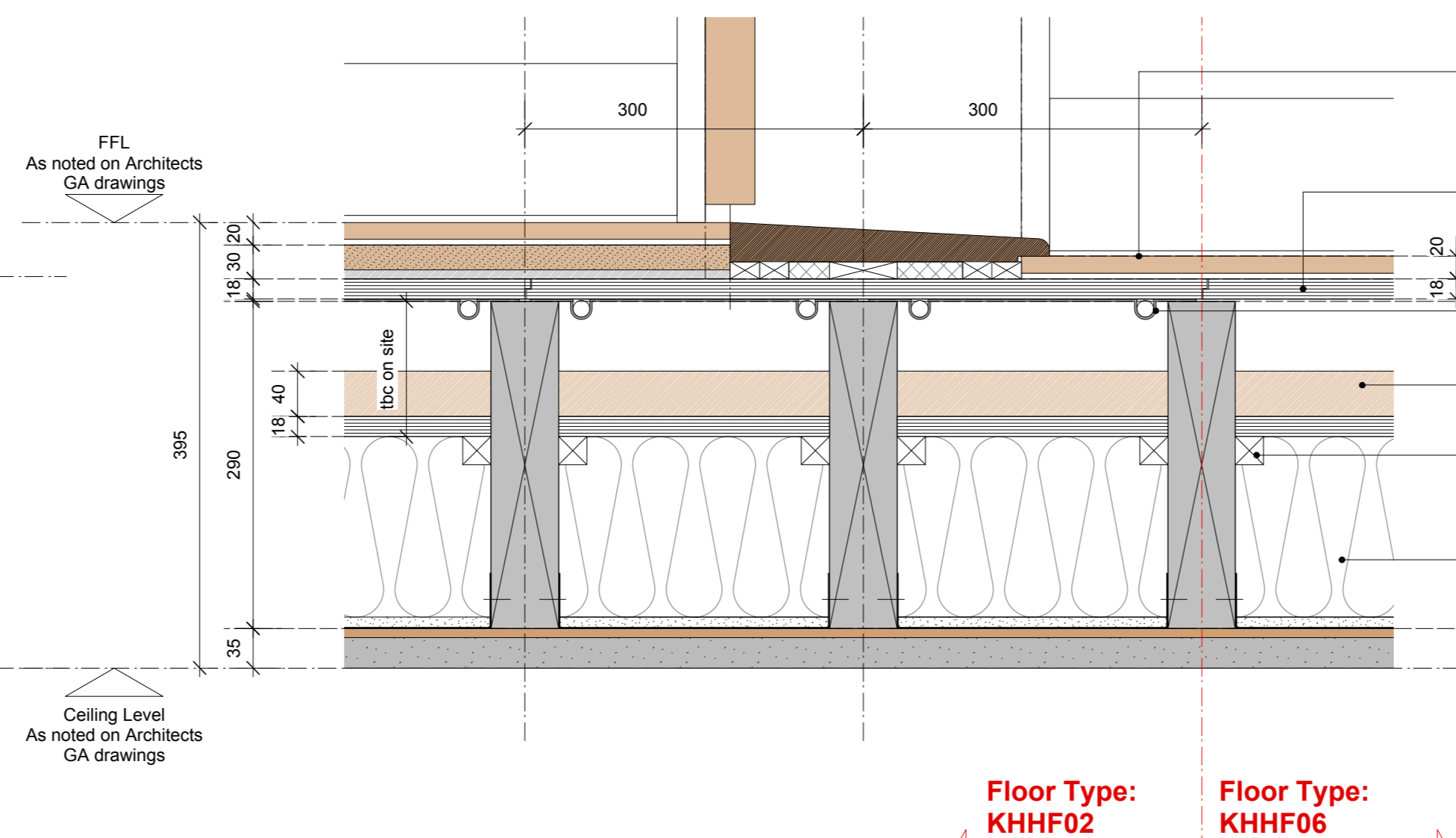
Detail 1: Second Floor, Preparation of Existing Floor
1:5 @ A1
SECOND NON-SEPARATING FLOOR FLOOR BUILD UP



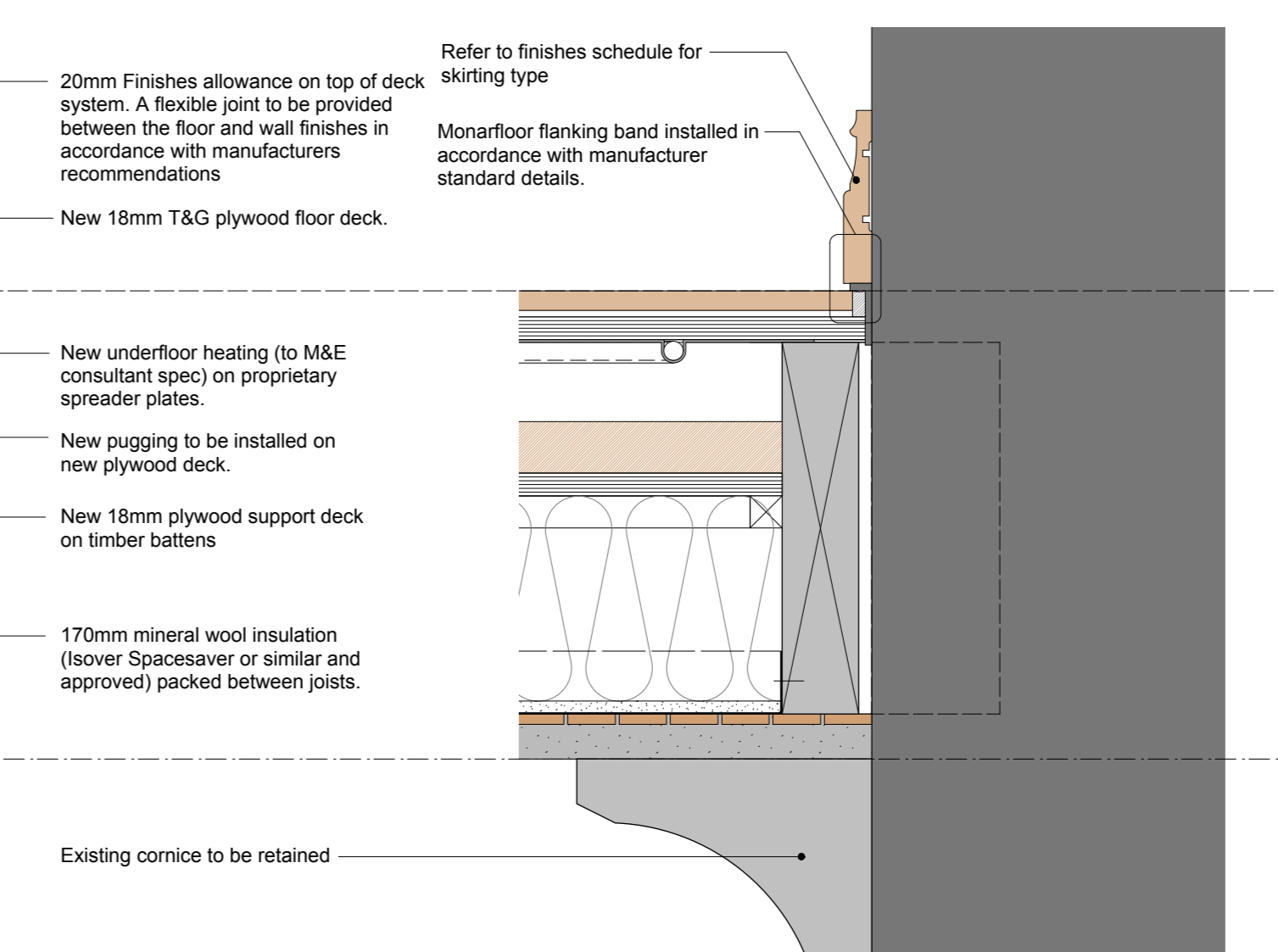
Detail 2: Second Floor, Upgrade of Existing Floor
1:5 @ A1
Floor Type: KHHF05
Floor Type: KHHF05A



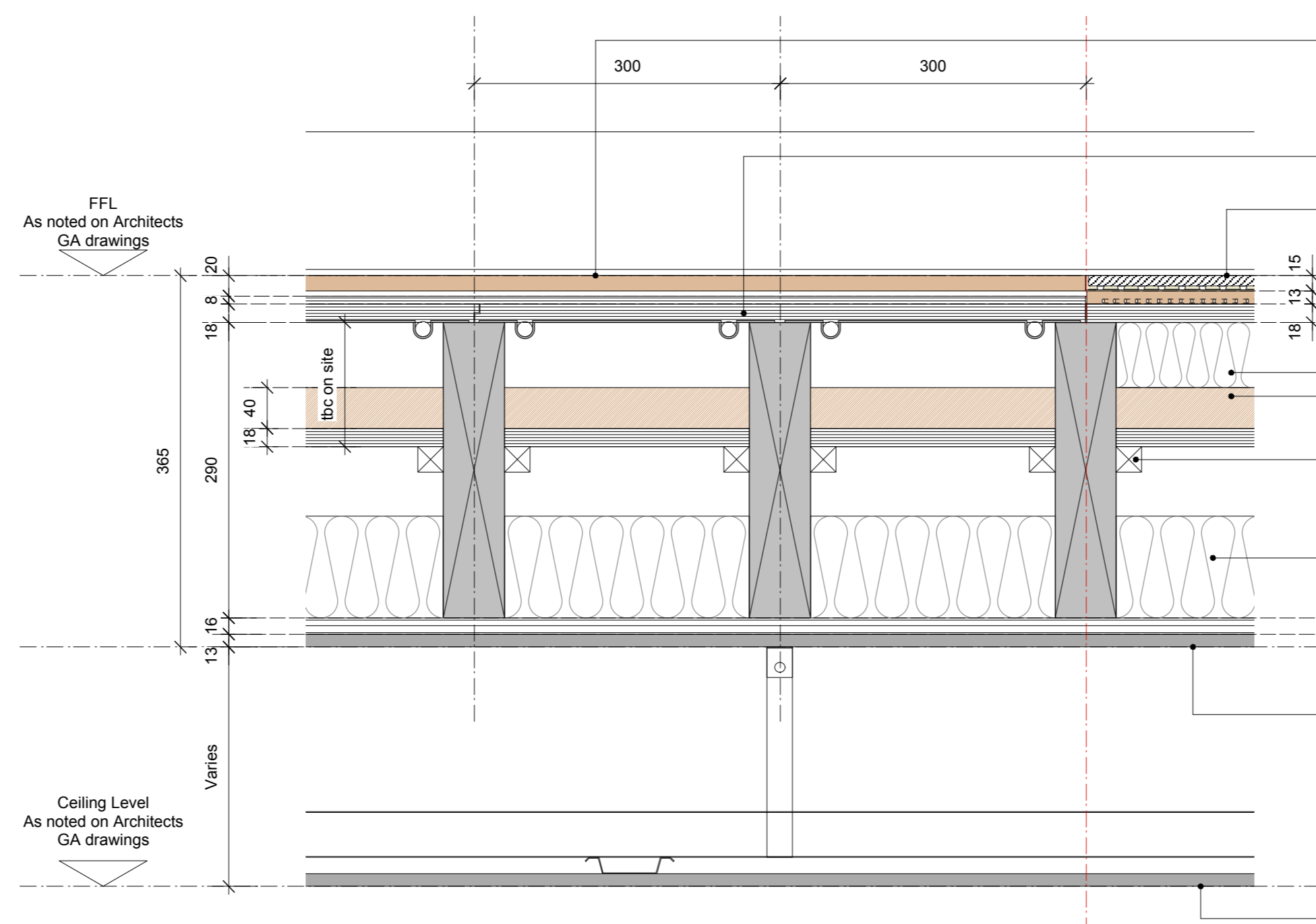
Detail 3: First Floor, Preparation of Existing Floor
1:5 @ A1
FIRST NON-SEPARATING FLOOR FLOOR BUILD UP



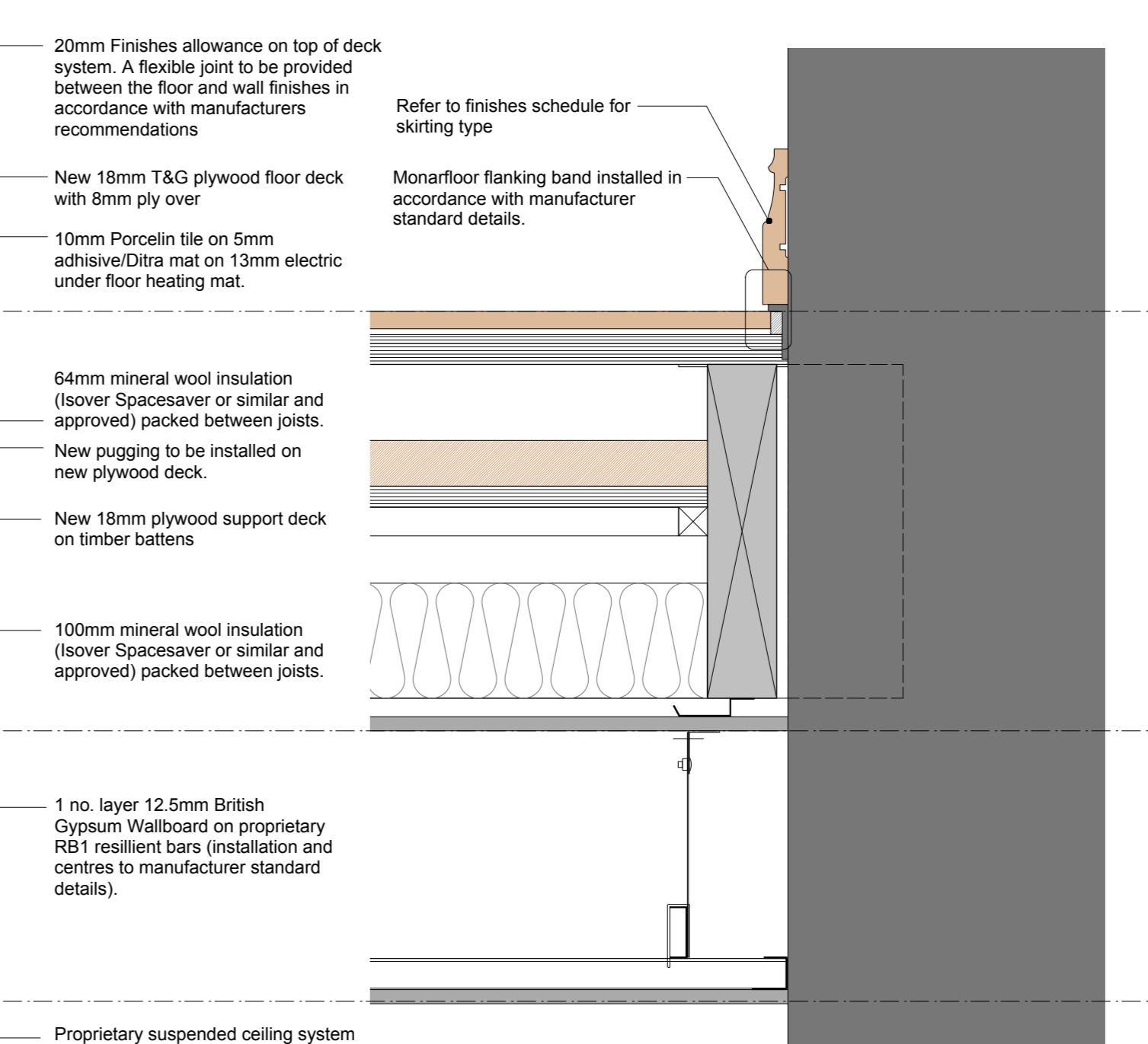
Detail 4: First Floor, Upgrade of Existing Floor
1:5 @ A1
Floor Type: KHHF02
Floor Type: KHHF06



Detail 5: Ground Floor, Preparation of Existing Floor
1:5 @ A1
GROUND NON-SEPARATING FLOOR FLOOR BUILD UP



Detail 6: Ground Floor, Upgrade of Existing Floor
1:5 @ A1
Floor Type: KHHF04
Floor Type: KHHF04A



DIMENSION AT ORIGINAL SHEET SIZE
Contractors must check all dimensions on site. Only figured dimensions are to be worked from. Discrepancies must be reported to the Architect before proceeding. © This drawing is Copyright.

- Notes:**
1. ALL existing constructions, structure, build ups etc are to be confirmed on site PRIOR to proceeding with the work.
 2. This drawing is to be read in conjunction with all relevant Architect GA drawings and specifications.
 3. This drawing is to be read in conjunction with all relevant drawings and specifications produced by the structural engineer and M&E consultant.
 4. This drawing is to be read in conjunction with the relevant fabric survey produced by ESG.
 5. This drawing is to be read in conjunction with the relevant condition investigation report produced by Hutton & Rostron.

ALL DETAILS TO BE APPROVED BY ACOUSTICIAN PRIOR TO INSTALLATION.

FOR CONSTRUCTION

REVISION	DRN	CHKD	DATE
C1 First Issue	TW		17.01.17

A&Q PARTNERSHIP

CLIENT
MOUNT ANVIL LTD

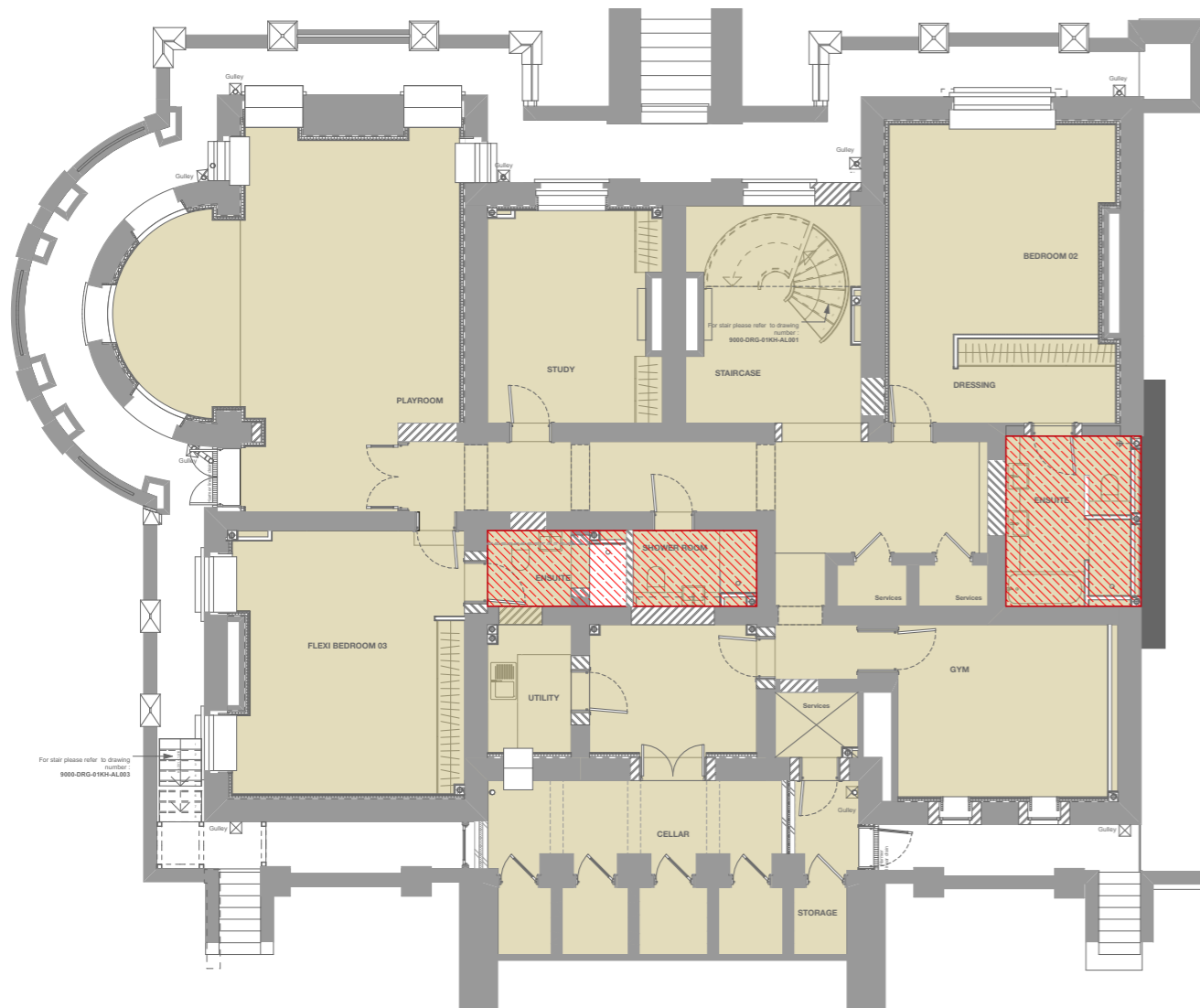


PROJECT
KIDDERPORE AVENUE

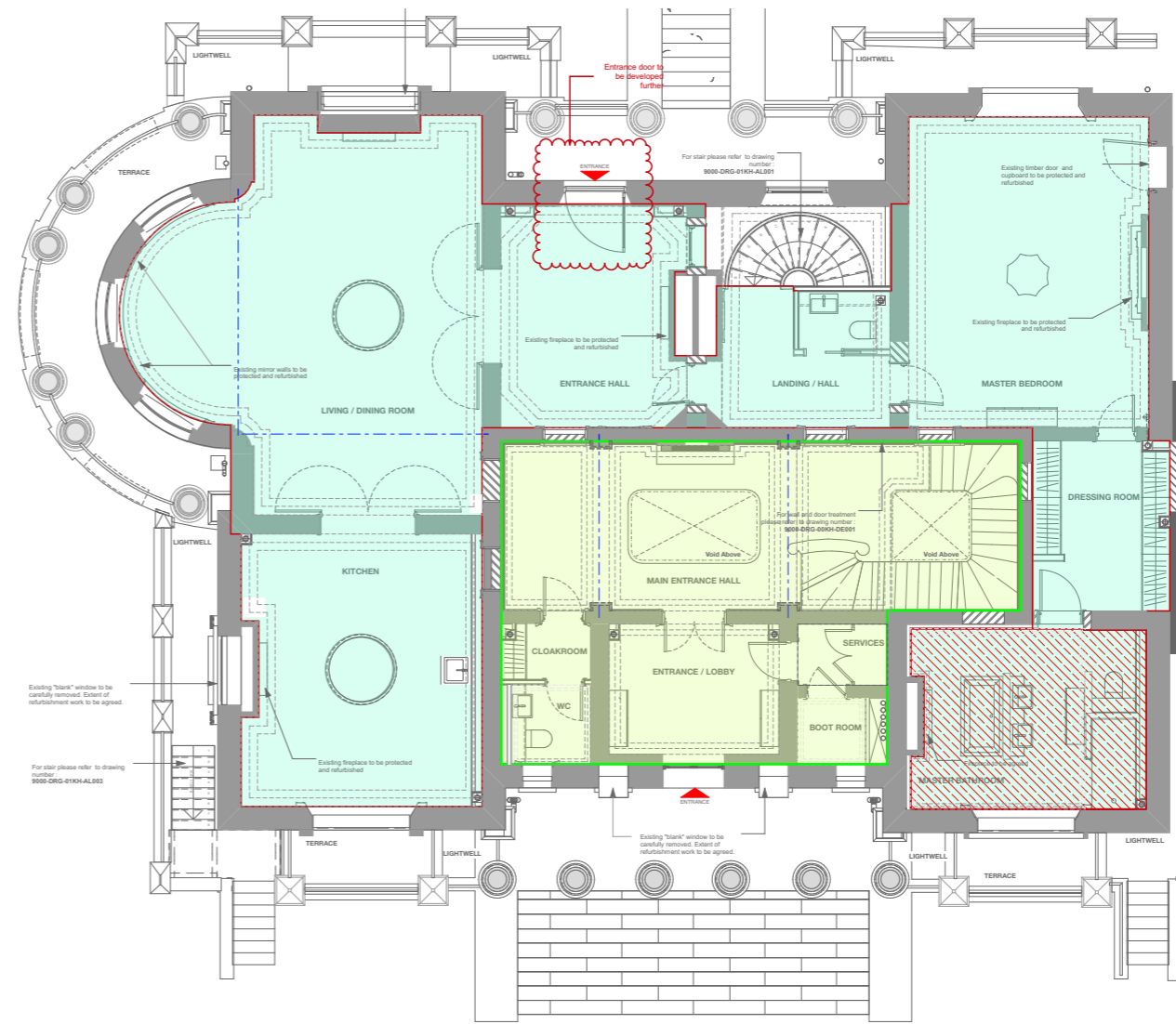
DRAWING
Kidderpore Hall
Non-Separating Floor Details

SCALE 1:5 @ A1 DATE Nov 2016
DRAWING No. 15 230 DRAWN BY TW
9000-DRG-00KH-DE005 REVISION C1

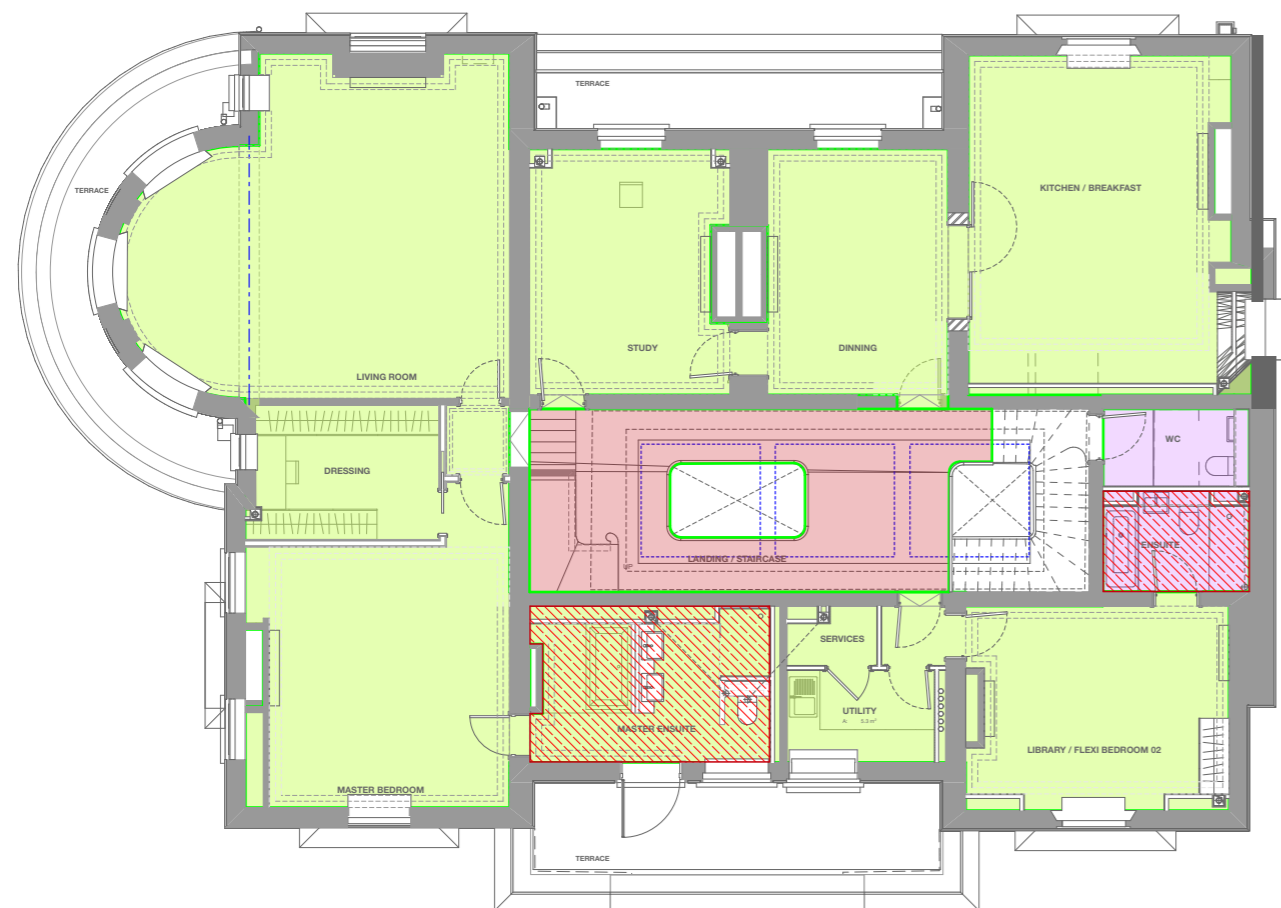
A & Q PARTNERSHIP (LONDON) LTD
THE LUX BUILDING, 2-4 HOXTON SQUARE, LONDON N1 6 NU
Tel: 020 7613 2244 Fax: 020 7613 2642 Email: london@aqp.co.uk
ARCHITECTURE DESIGN MASTERPLANNING INTERIORS



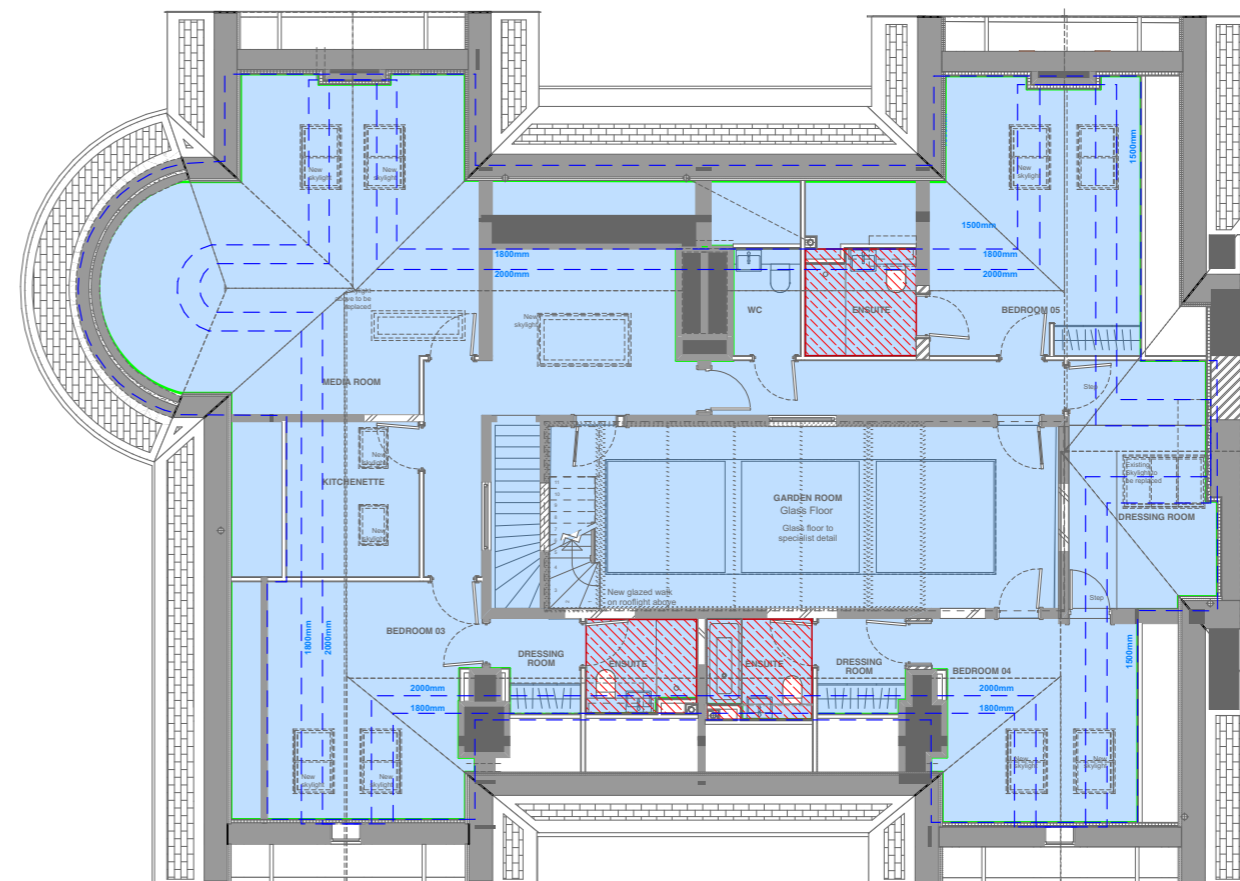
KH_LOWER GROUND FLOOR



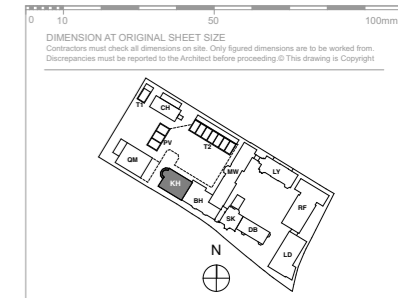
KH_UPPER GROUND FLOOR



KH_FIRST FLOOR



KH_SECOND FLOOR



KEY PLAN
NOTE: ALL INFORMATION SHOWN ON THIS DRAWINGS IS SUBJECT TO DESIGN DEVELOPMENT

Floor Type Legend:

- GHFF01 - New Ground Bearing Slab
- GHFF01A - New Ground Bearing Slab (UFH)
- KHFF04 - Upper Ground Upgrade
- KHFF04A - Upper Ground Upgrade (UFH)
- KHFF01 - Upper Ground Upgrade
- KHFF02 - Level 1 Upgrade
- KHFF02A - Level 1 Upgrade (UFH)
- KHFF06 - Level 1 Upgrade
- KHFF03 - Level 1, New Joists
- KHFF03A - Level 1, New Joists (UFH)
- KHFF05 - Level 2
- KHFF05A - Level 2 (UFH)

Refer to Drawings 9000-DRG-00KH-DE004 & DE005 for Floor Details

FOR CONSTRUCTION

REVISION	DRN	CHKD	DATE
C1 Issued for Construction	NV	TW	17/01/2017



CLIENT
MOUNT ANVIL LTD

PROJECT
KIDDERPORE AVENUE

DRAWING
Kidderpore Hall
Floor Type Reference Plans

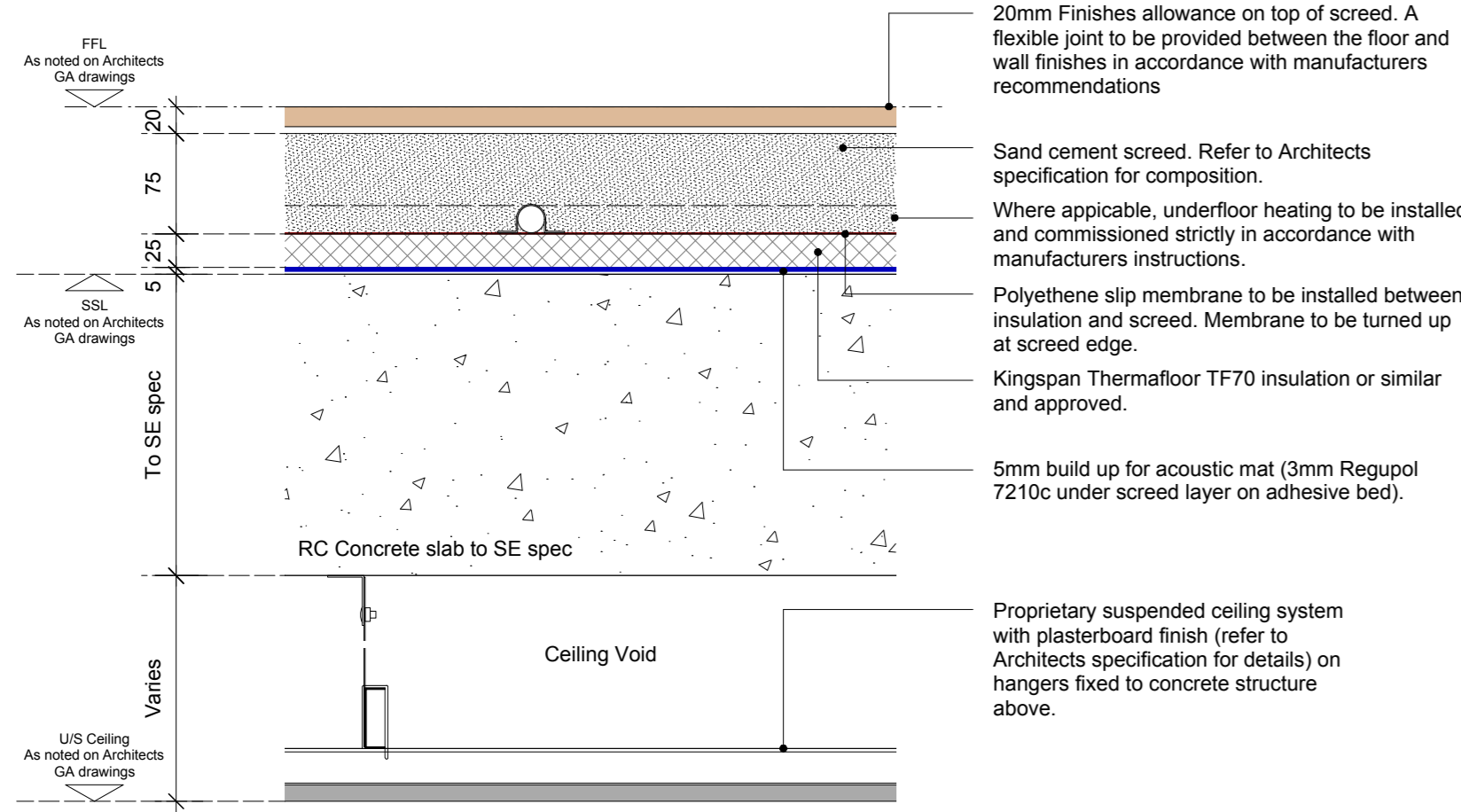
SCALE 1:150 @ A3 DATE January 2017

DRAWING No. 15 230
9000-DRG-00KH- DE006

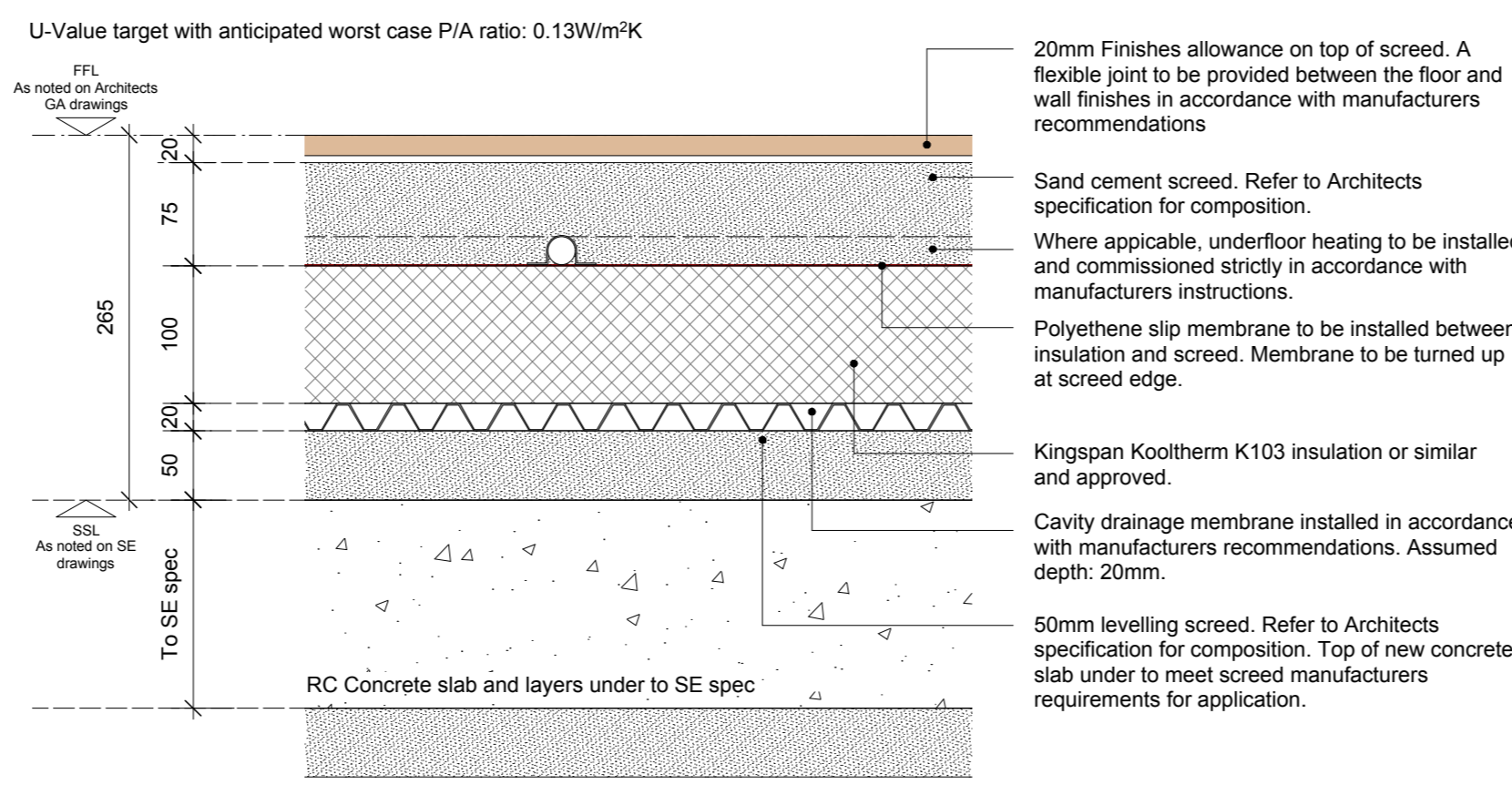
DRAWN BY NV
REV C1

A & Q PARTNERSHIP (LONDON) LTD
THE LUX BUILDING, 2-4 HOXTON SQUARE, LONDON N1 6 NU
Tel: 020 7613 2244 Fax: 020 7613 2642 Email: london@aqp.co.uk
ARCHITECTURE DESIGN MASTERPLANNING INTERIORS

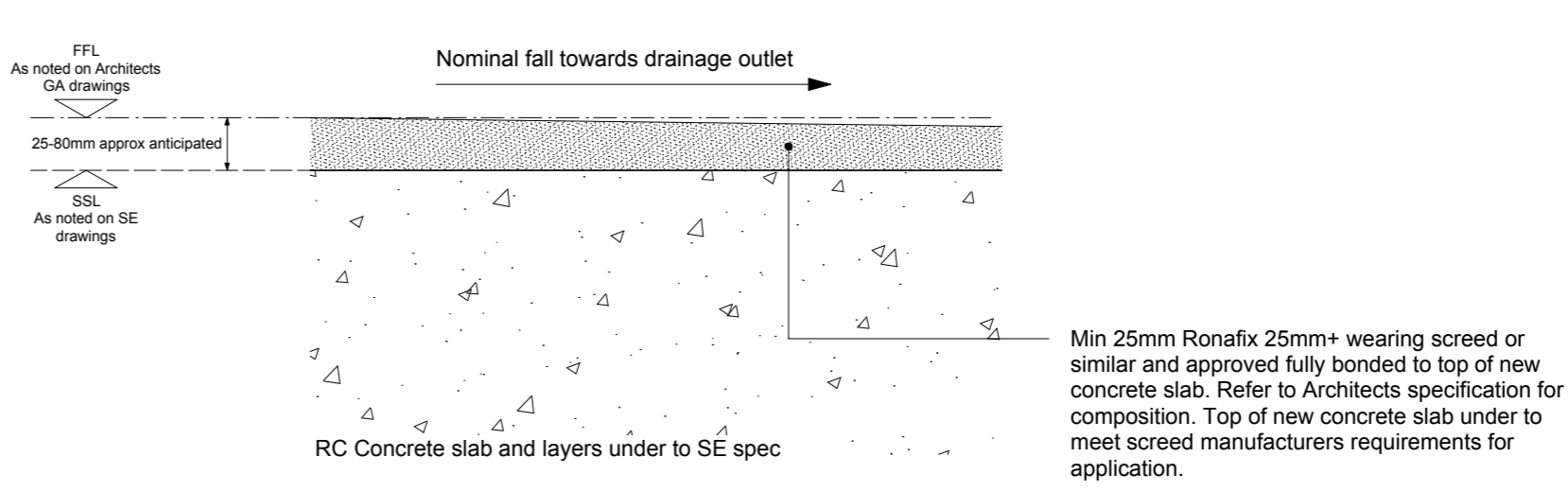
FLOOR TYPE FF01
TYPICAL FLOOR BUILD UP TO UPPER COMPARTMENT FLOORS



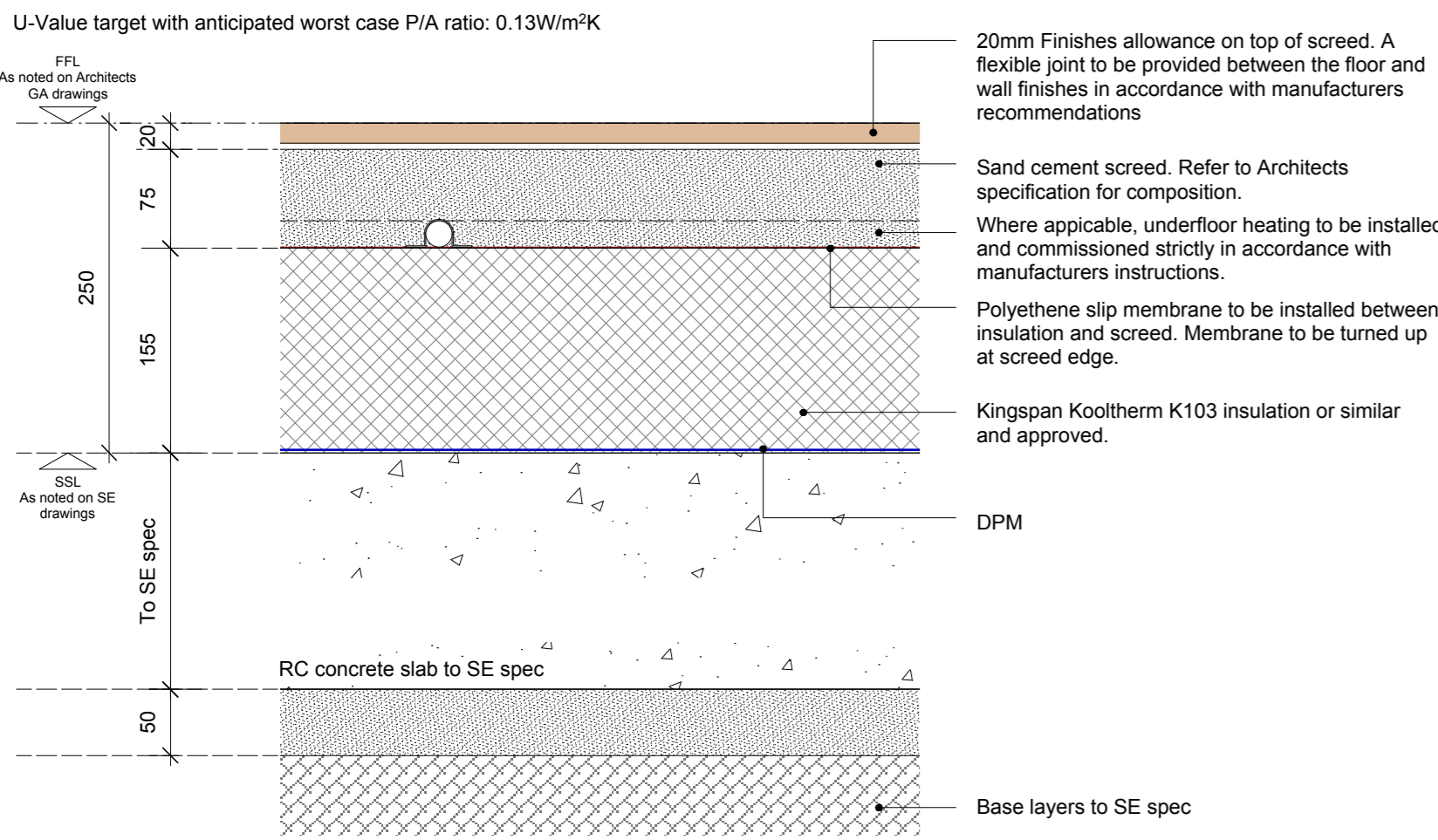
FLOOR TYPE FF02
TYPICAL BASEMENT FLOOR BUILD UP WITH DRAINED CAVITY



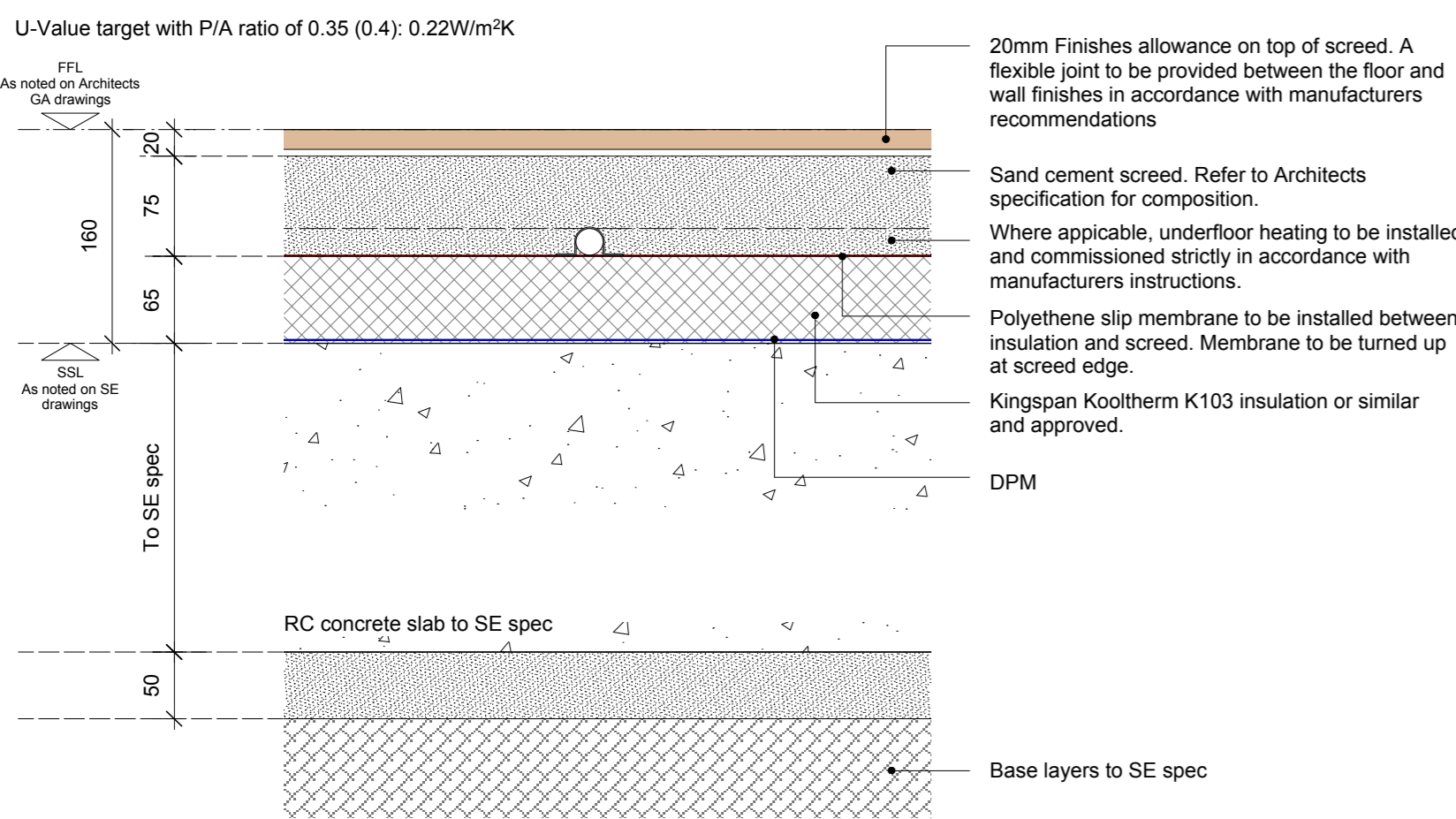
FLOOR TYPE FF03
TYPICAL WEARING SCREED TO REFUSE STORES/ BICYCLE STORES/ PLANT AND OTHER SERVICE AREAS IN BASEMENT



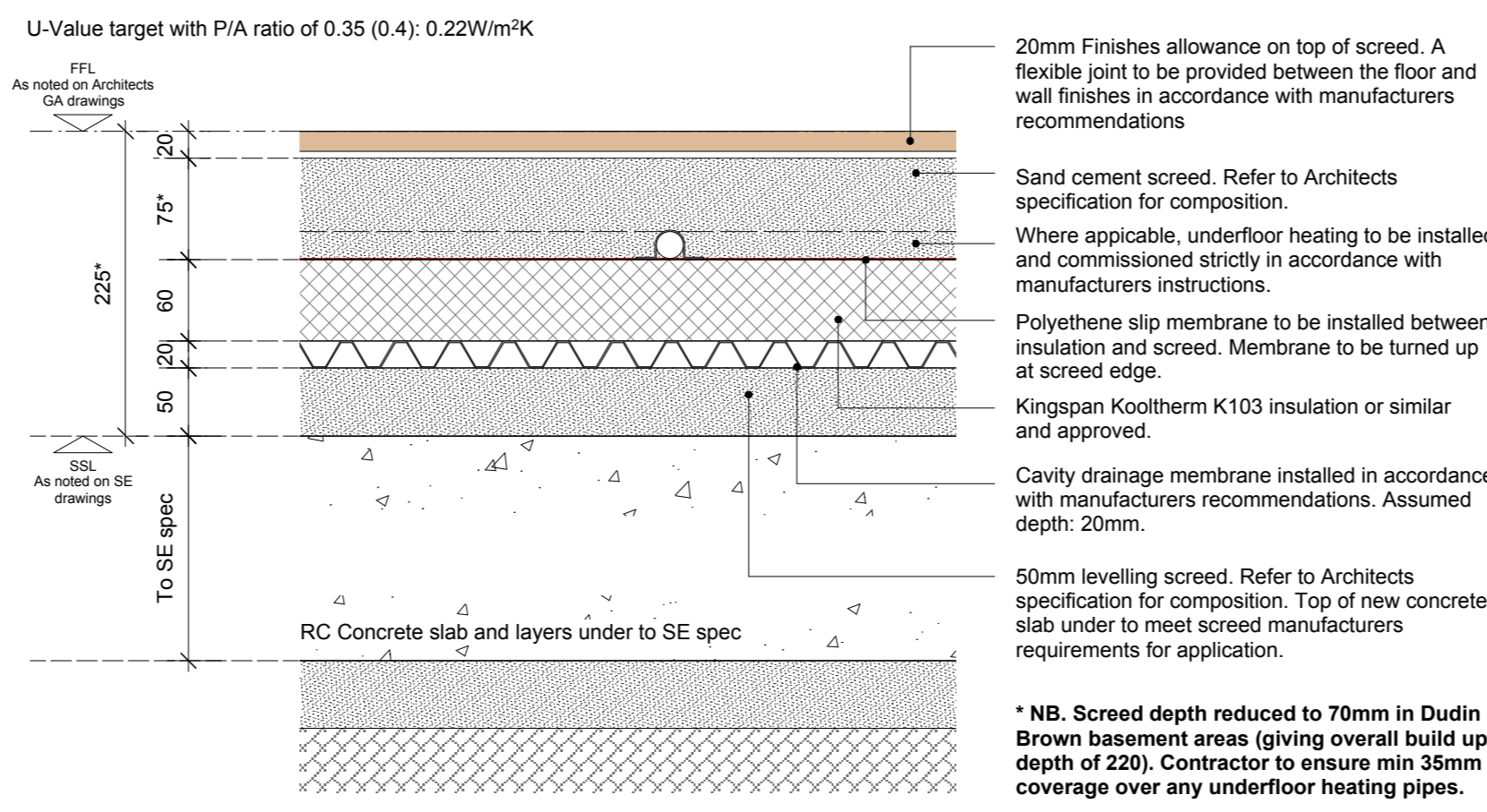
FLOOR TYPE FF04
TYPICAL GROUND BEARING SLAB FLOOR BUILD UP WITH DPM



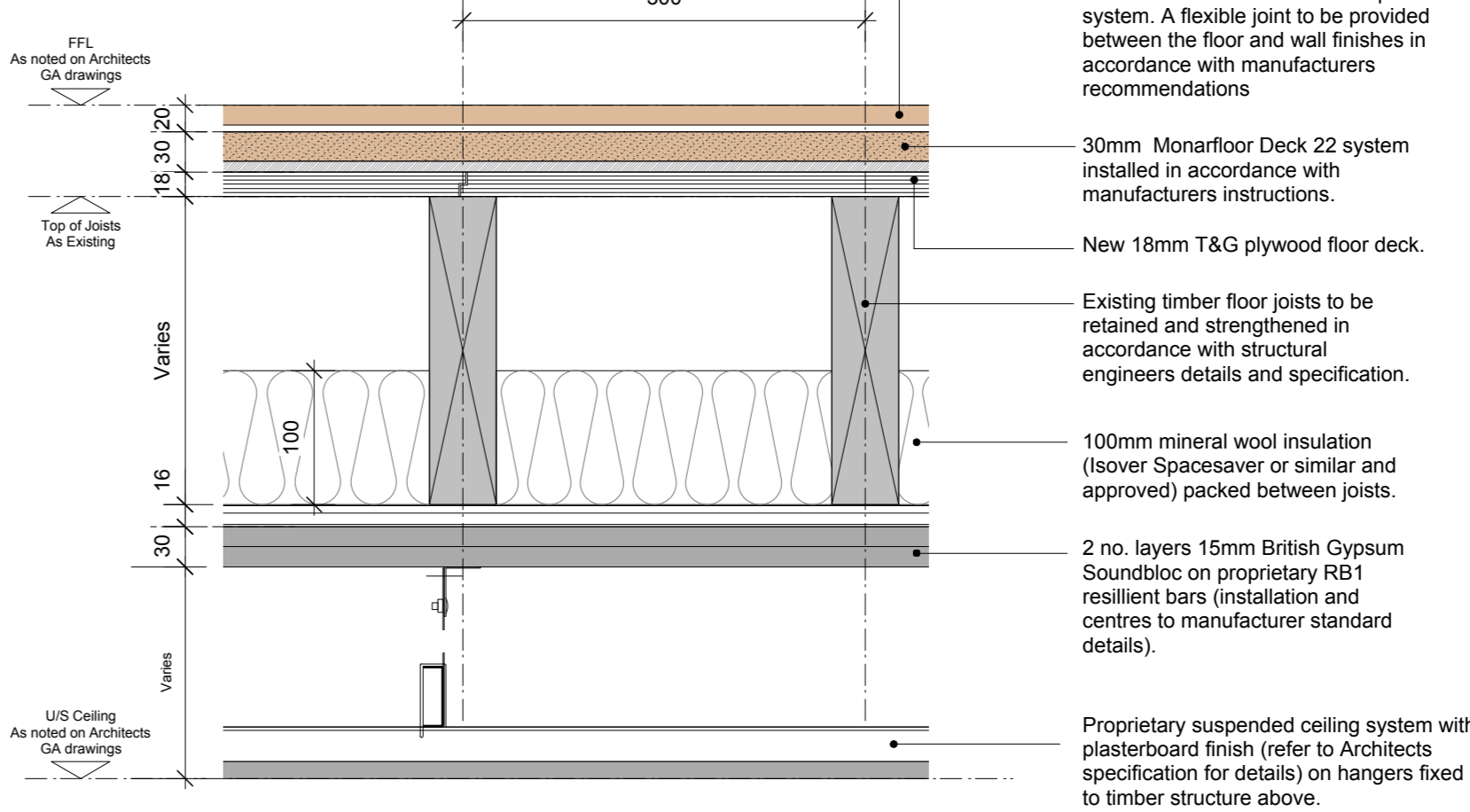
FLOOR TYPE GNHF01
TYPICAL GROUND BEARING SLAB FLOOR BUILD UP WITH DPM



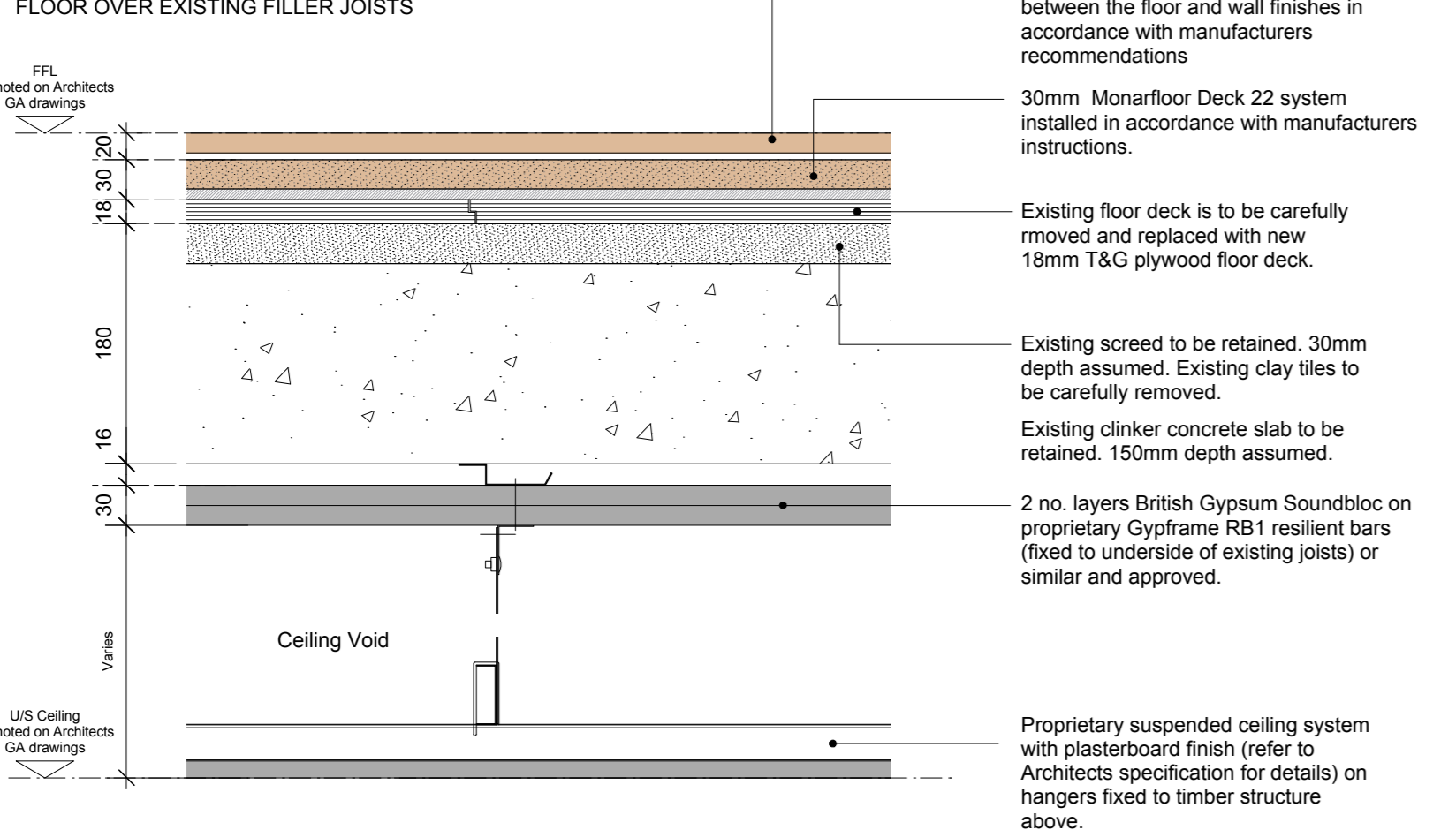
FLOOR TYPE GNHF02
TYPICAL BASEMENT FLOOR BUILD UP WITH DRAINED CAVITY



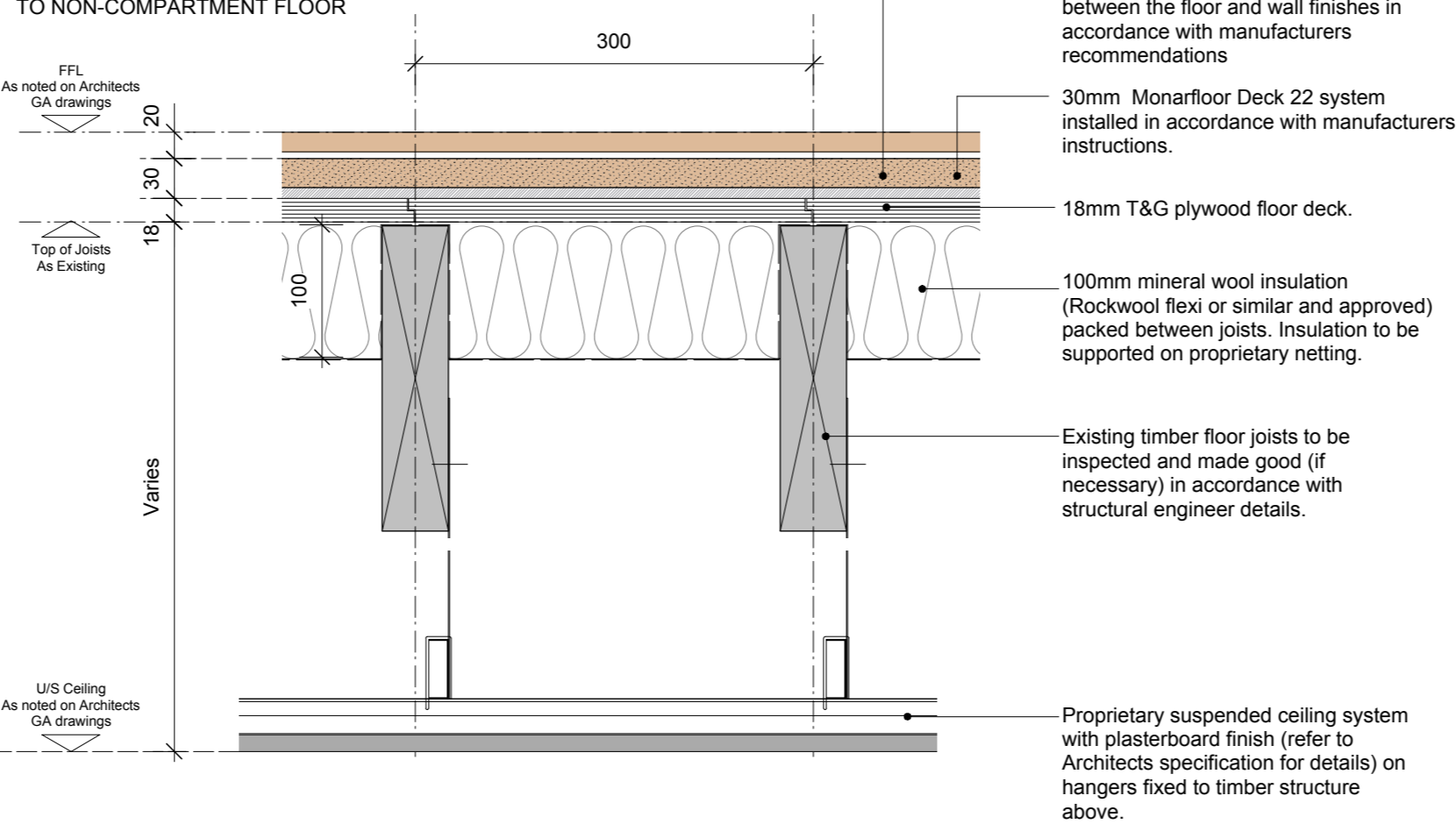
FLOOR TYPE GNHF03
TYPICAL TIMBER FLOOR BUILD UP TO COMPARTMENT FLOOR



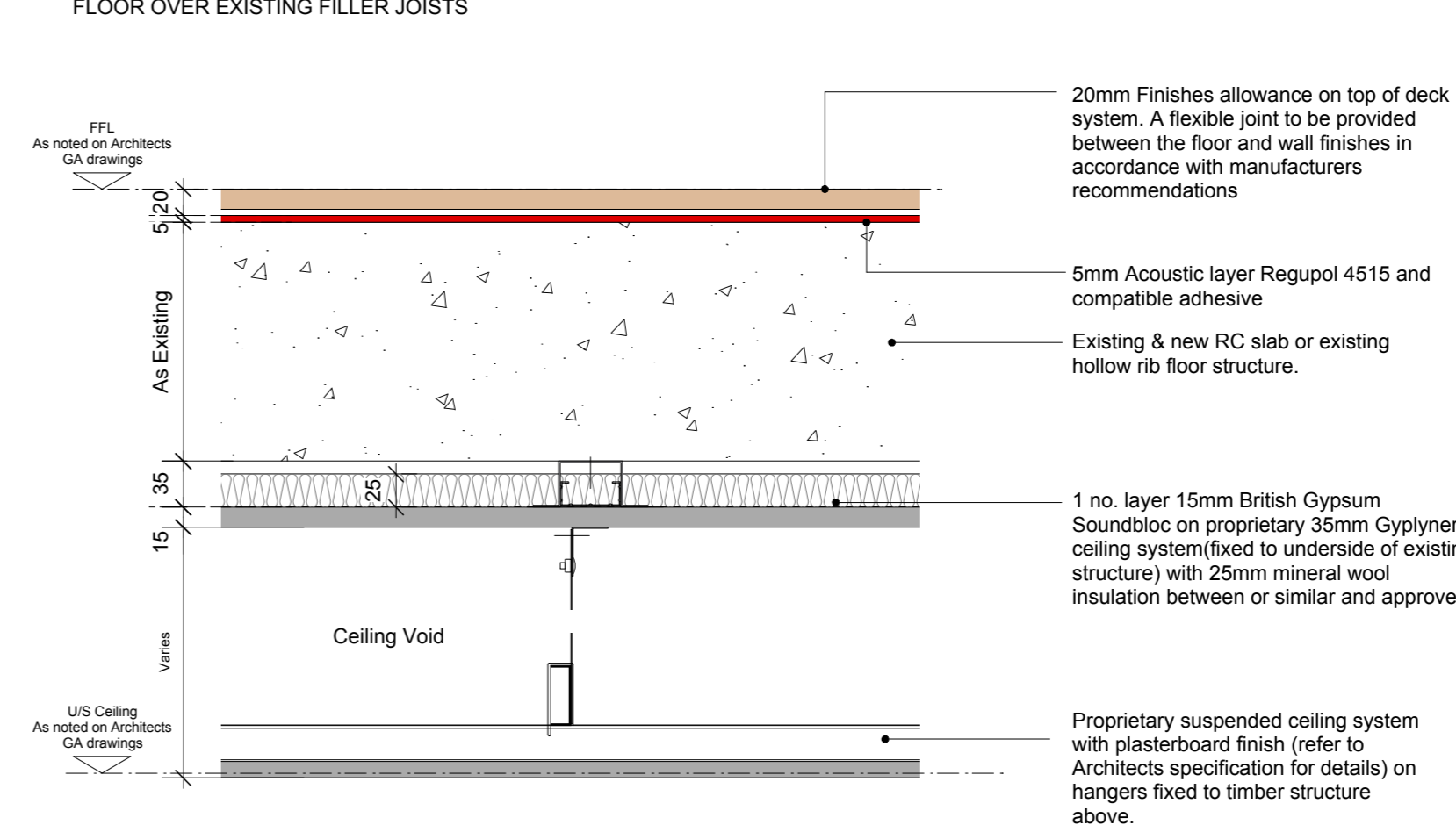
FLOOR TYPE GNHF04
TYPICAL FLOOR BUILD UP TO COMPARTMENT FLOOR OVER EXISTING FILLER JOISTS



FLOOR TYPE GNHF05
TYPICAL TIMBER FLOOR BUILD UP TO NON-COMPARTMENT FLOOR



FLOOR TYPE GNHF06
TYPICAL FLOOR BUILD UP TO COMPARTMENT FLOOR OVER EXISTING FILLER JOISTS



DIMENSION AT ORIGINAL SHEET SIZE
Contractors must check all dimensions on site. Only figured dimensions are to be worked from. Discrepancies must be reported to the Architect before proceeding. © This drawing is Copyright

- Notes:**
1. ALL existing constructions, structure, build ups etc. are to be confirmed on site PRIOR to proceeding with the work.
 2. This drawing is to be read in conjunction with all relevant Architect GA drawings and specifications.
 3. This drawing is to be read in conjunction with all relevant drawings and specifications produced by the structural engineer and M&E consultant.
 4. This drawing is to be read in conjunction with the relevant fabric survey produced by ESG.
 5. This drawing is to be read in conjunction with the relevant condition investigation report produced by Hutton & Rostron.

ALL DETAILS TO BE APPROVED BY ACOUSTICIAN & FIRE CONSULTANT PRIOR TO INSTALLATION.

Refer to A&Q drawing no. 15 230-9000-DRG-00GN-DE040 for general floor finishes details.

Heritage Building, Bathrooms & Ensuites : Refer to A&Q drawing no. 15 230-9000-DRG-00GN-DE046 for floor build ups and typical details.

FOR CONSTRUCTION

REVISION	DRN	CHKD	DATE
T1 First Issue	FC	TW	30.09.16
T2 Floor finishes details added	FC	TW	13.10.16
C1 Floor finishes details moved to A&Q drawing no. 15230 9000-DRG-00GN-DE040. Additional notes and detail added to typical new build floors. Typical heritage floor build ups added to drawing.	ST	TW	03.01.17
C2 Note added re: heritage bathroom & ensuite floor build ups.	ST	TW	16.01.17
C3 Floor Build Up GNHF06 added	ST	TW	20.01.17



CLIENT
MOUNT ANVIL LTD

PROJECT
KIDDERPORE AVENUE

DRAWING
Generally Applicable Floor Build-up Details 1

SCALE 1:5 @ A1 DATE September 2016
DRAWING No. 15 230 DRAWN BY EC
9000-DRG-00GN-DE034 REVISION C3

A & Q PARTNERSHIP (LONDON) LTD
THE LUX BUILDING, 2-4 HOXTON SQUARE, LONDON N1 6NU
Tel: 020 7613 2244 Fax: 020 7613 2642 Email: london@aqp.co.uk
ARCHITECTURE DESIGN MASTERPLANNING INTERIORS