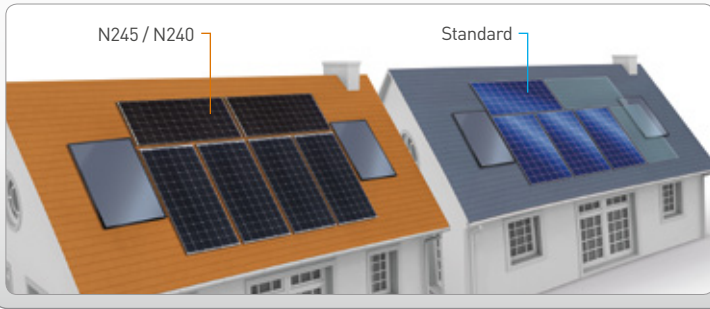


## Photovoltaic module HIT® VBHN245SJ25 / VBHN240SJ25

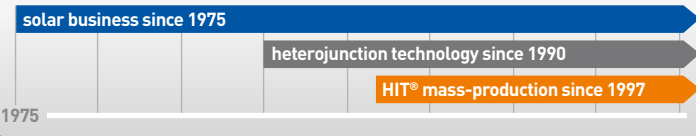
### Slim size, flexible installation

At only 0.8 m wide and 1.26m² area, this module enables maximum output per roof area on small and complicated roofs.



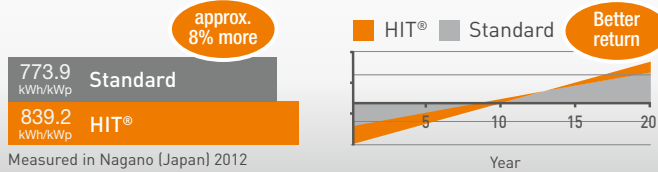
### 100% Panasonic, 100% HIT®

Proudly featuring Panasonic's original invention, the heterojunction solar cell. With over 1 billion cells produced commercially over 18 years, 25 years after the breakthrough in the development and looking back to over 40 years of experience in solar, Panasonic really offers you a 25-year guarantee you can trust.



### More energy, higher profit!

Helping you reach a higher final profit with your PV system!



## 245W / 240W

High Efficiency + High Performance at High Temperatures = High Power Generation

## QUALITY PROVEN 4 WAYS

### 1 Guaranteed by Panasonic

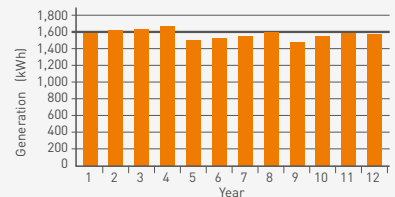
- IEC and over 20 Panasonic internal tests
- Vertically integrated own manufacturing (wafer, cell and module)



### 3 Less degradation on the field

12 years actual data prove a reliable and stable performance.

Installation: March 2004  
Location: Gloucestershire, UK  
Model: HIP-180BE  
System size: 1.80 kWp  
Tilt: 40 deg.  
Direction: South-West



### 2 Record low claim rate

Less than 0.005% failure rate after more than 10 years experience in Europe (as of September 2015)

### 4 3rd Party verified

- Lifecycle testing (Long-Term-Sequential-Test) by TÜV Rheinland (tested on VBHN240SE10)
- PID-free (tested by Fraunhofer Institute)

HIT® is a registered trademark of Panasonic Group.

### Electrical data (at STC)

	VBHN245SJ25	VBHN240SJ25
Max. power (Pmax) [W]	245	240
Max. power voltage (Vmp) [V]	44.3	43.6
Max. power current (Imp) [A]	5.54	5.51
Open circuit voltage (Voc) [V]	53.0	52.4
Short circuit current (Isc) [A]	5.86	5.85
Max. over current rating [A]	15	
Power tolerance [%] *	+10/-0	
Max. system voltage [V]	1000	
Solar Panel efficiency [%]	19.4	19.0

Note: Standard Test Conditions: Air mass 1.5; Irradiance = 1000W/m<sup>2</sup>; cell temp. 25°C  
 \* Maximum power at delivery. For guarantee conditions, please check our guarantee document.

### Temperature characteristics

Temperature (NOCT) [°C]	44.0	44.0
Temp. coefficient of Pmax [%/°C]	-0.29	-0.29
Temp. coefficient of Voc [V/°C]	-0.133	-0.131
Temp. coefficient of Isc [mA/°C]	1.76	1.76

### At NOCT (Normal Operating Conditions)

Max. power (Pmax) [W]	187.4	183.2
Max. power voltage (Vmp) [V]	42.5	41.7
Max. power current (Imp) [A]	4.41	4.39
Open circuit voltage (Voc) [V]	50.3	49.7
Short circuit current (Isc) [A]	4.71	4.71

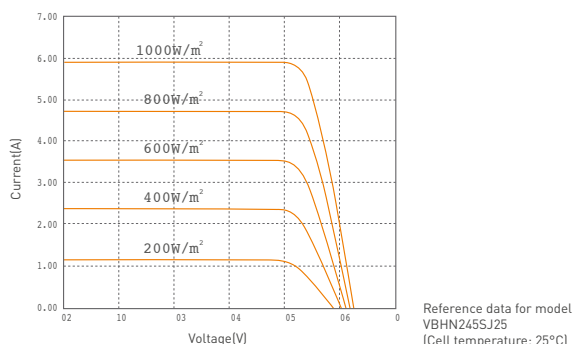
Note: Normal Operating Cell Temp.: Air mass 1.5; Irradiance = 800W/m<sup>2</sup>; Air temperature 20°C; wind speed 1 m/s

### At low irradiance (20%)

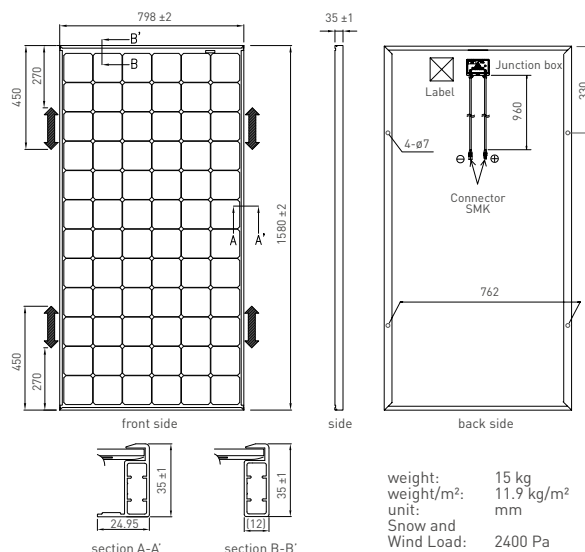
Max. power (Pmax) [W]	47.0	45.9
Max. power voltage (Vmp) [V]	43.2	42.2
Max. power current (Imp) [A]	1.09	1.09
Open circuit voltage (Voc) [V]	49.6	49.0
Short circuit current (Isc) [A]	1.17	1.17

Note: Low irradiance: Air mass 1.5; Irradiance = 200W/m<sup>2</sup>; cell temp. = 25°C

### Dependence on irradiance



### Dimensions and weight



### Guarantee

Power output: 10 years (90% of Pmin)  
 25 years (80% of Pmin)  
 Product workmanship: 15 years (based on guarantee document)

### Materials

Cell material: 5 inch photovoltaic cells  
 Glass material: AR coated tempered glass  
 Frame materials: Black anodized aluminium  
 Connectors type: SMK

### Certificates



IEC61215  
 IEC61730-1  
 IEC61730-2



Please consult your local dealer for more information

**CAUTION!** Please read the installation manual carefully before using the products.

Used electrical and electronic products must not be mixed with general household waste. For proper treatment, recovery and recycling of old products, please take them to applicable collection points in accordance with your national legislation.



Panasonic Eco Solutions Europe  
 Panasonic Electric Works Europe AG

Robert-Koch-Straße 100,  
 85521 Ottobrunn, Germany  
 Tel. +49 89 45354-1000  
 Fax +49 89 45354-2111  
 info.solar@eu.panasonic.com

All Rights Reserved © 2015 COPYRIGHT Panasonic Electric Works Europe AG  
 Specifications are subject to change without notice.

5/2016