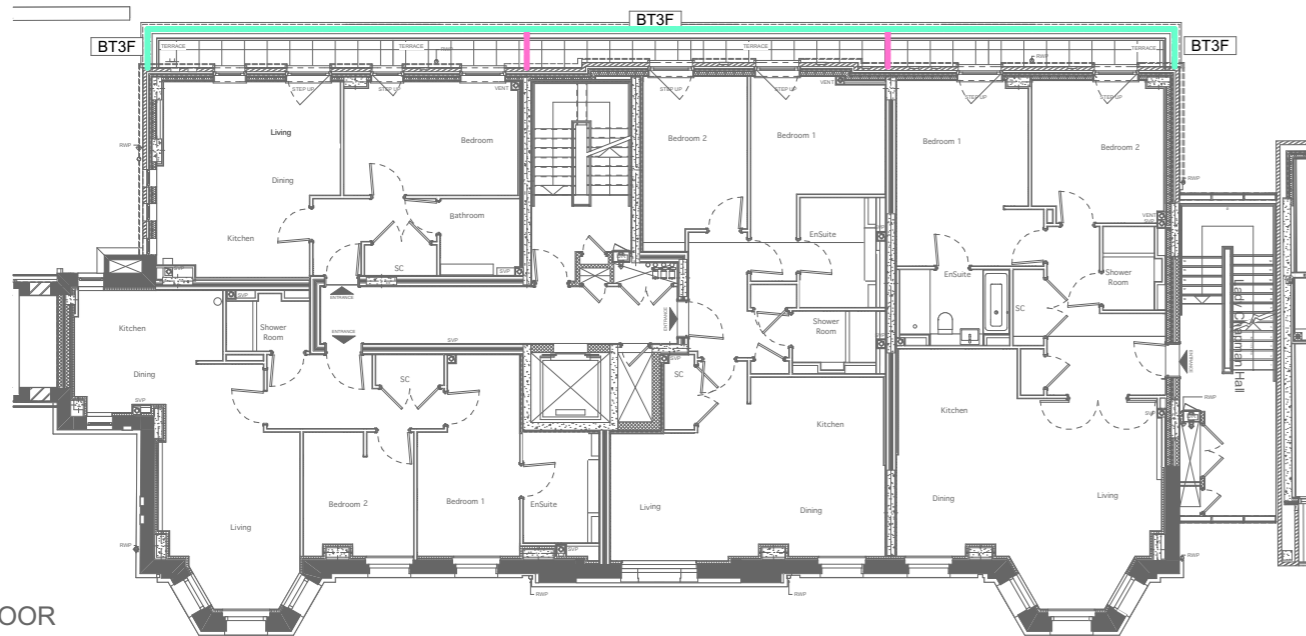
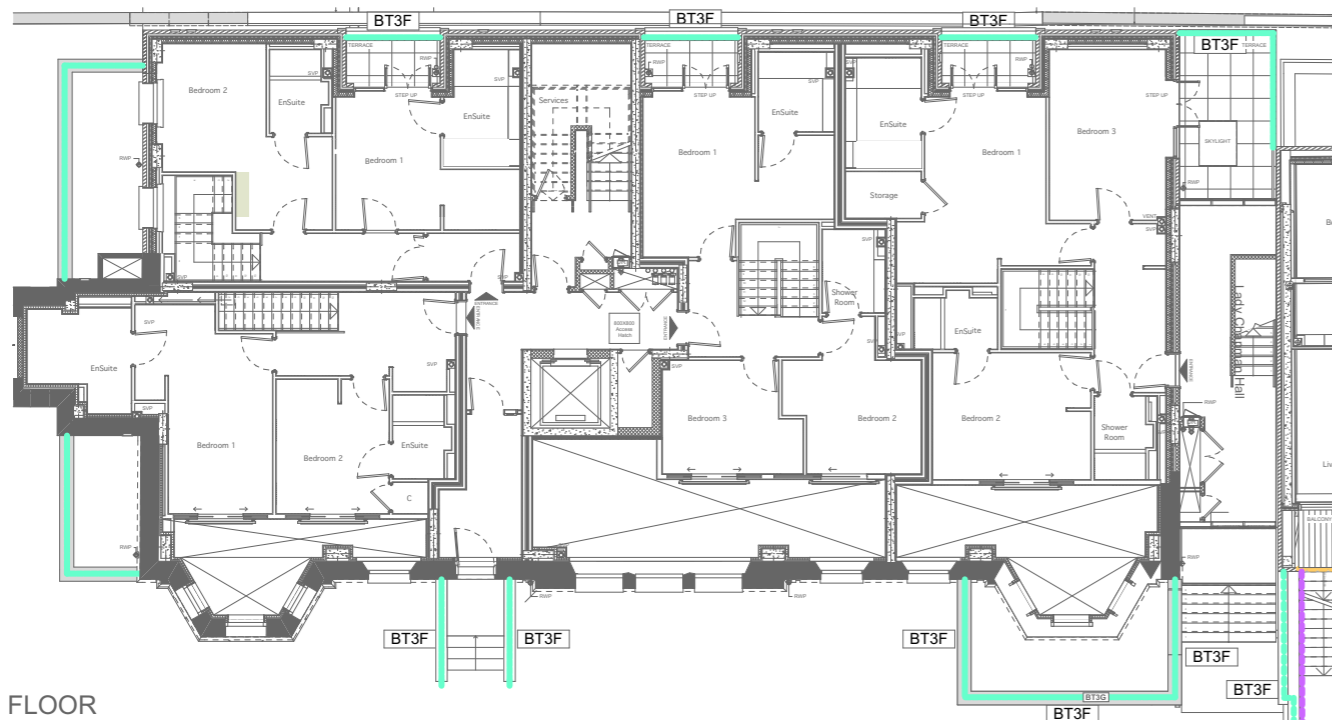


SECOND FLOOR
1:200@A3

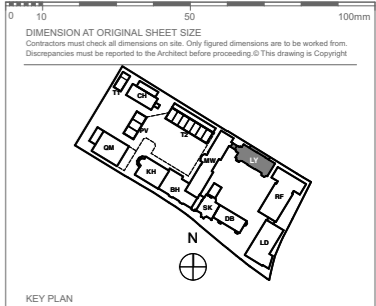


FIRST FLOOR
1:200@A3



GROUND FLOOR
1:200@A3

- Balustrading Types**
- **BT1** | Glazed balustrade
 - **BT2** | MS Metal railing PPC painted black to New Build
 - **BT3** | MS metal railings hand painted black generally to Heritage Buildings. *
 - **BT4** | Side-fixed MS Metal railing PPC painted black to New Build
 - **BT5** | MS Metal handrails PPC painted black generally to New Build
 - **BT6** | Translucent glazed privacy screens - etched glass to both sides
 - **BT7** | Existing Railing to be Refurbished
- * Refer to BT3 Variation on Drawing 9000-DRG-00GN-DE904



KEY PLAN

PLANNING

REVISION	DRN	CHKD	DATE
First Issue	EC	TW	02/08/16



CLIENT
MOUNT ANVIL LTD



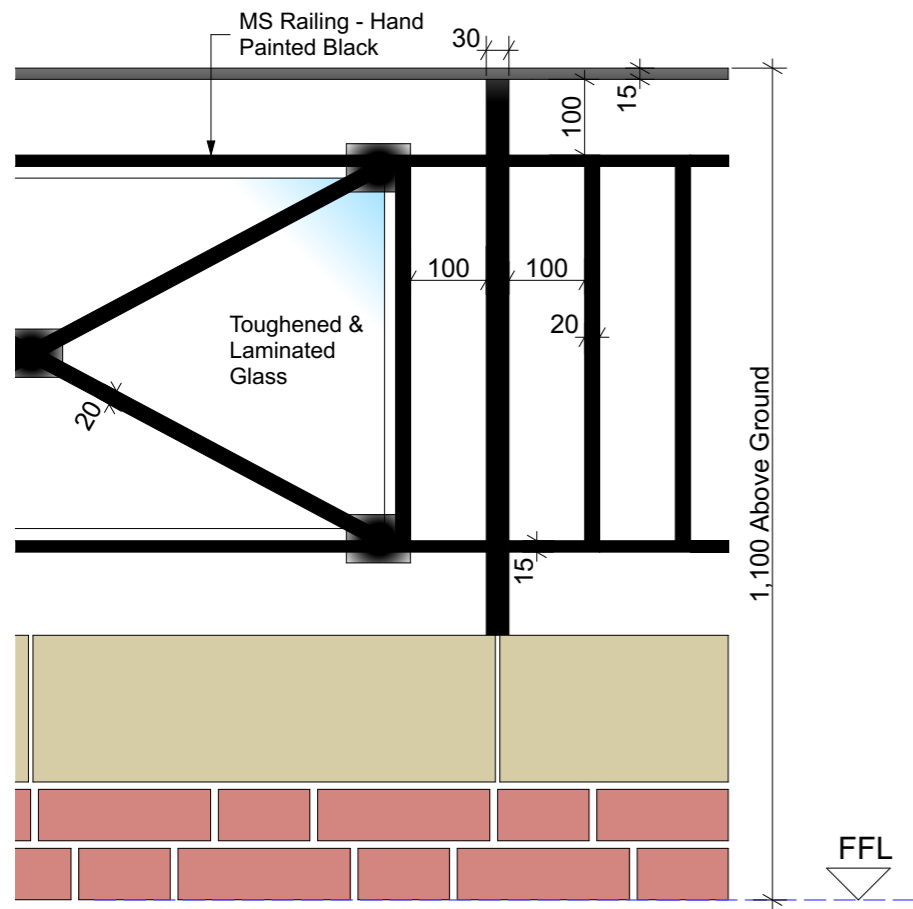
PROJECT
KIDDERPORE AVENUE

DRAWING
Lady Chapman
Metalwork Diagrams

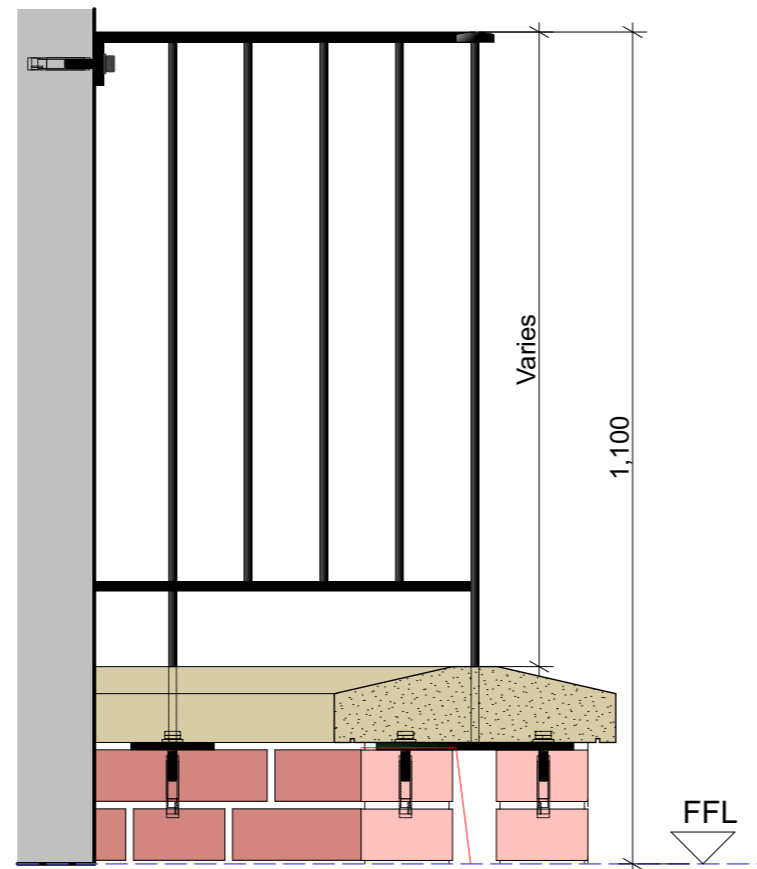
SCALE	As shown	DATE
		May 2016

DRAWING No.	DRAWN BY
15 230	EC
9000-DRG-16LY-VL901	REV

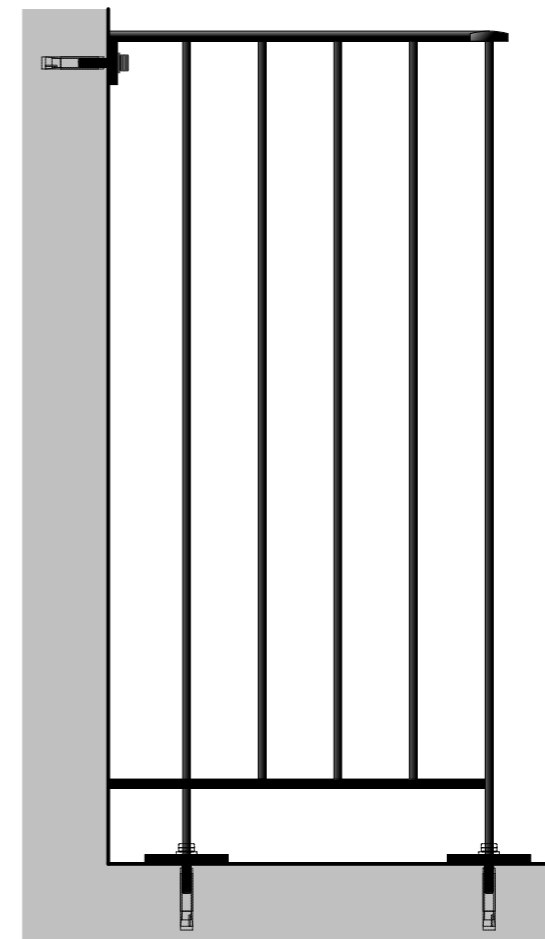
A & Q PARTNERSHIP (LONDON) LTD
THE LUX BUILDING, 2-4 HOXTON SQUARE, LONDON N1 6 NU
Tel: 020 7613 2244 Fax: 020 7613 2642 Email: london@aqp.co.uk
ARCHITECTURE DESIGN MASTERPLANNING INTERIORS



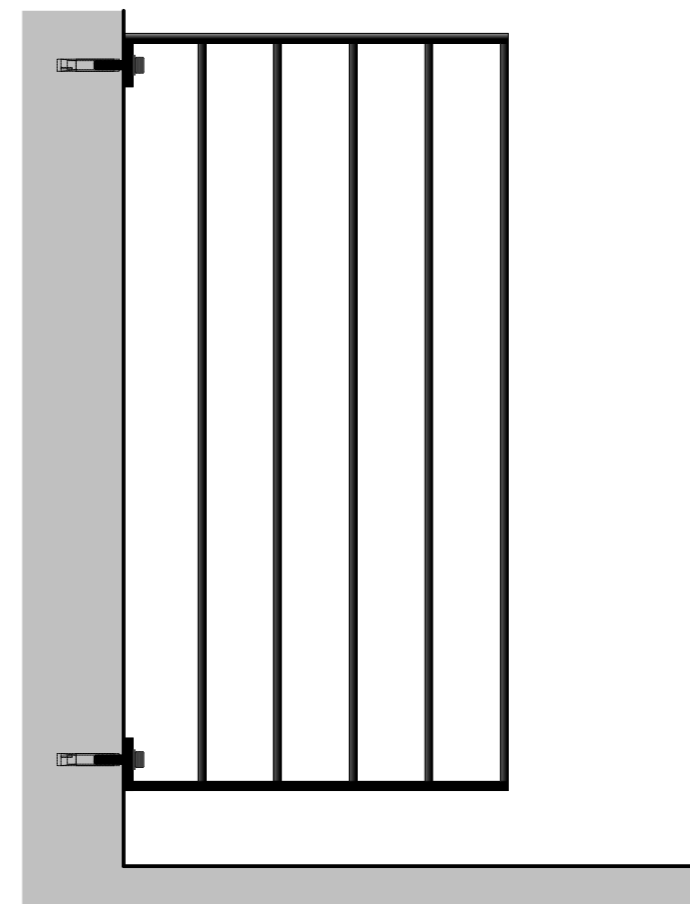
BT3G BH New Lightwell Railings 1:10



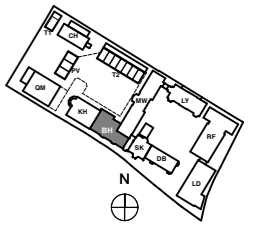
BT3F New Handrail - SK & LY 1:10



BT3H New Balconies & Terraces - DB, MW, BH & SK 1:10



BT3J New Julieth Railing - LY 1:10



KEY PLAN

NOTE:
ALL INFORMATION SHOWN ON THIS DRAWINGS IS SUBJECT TO DESIGN DEVELOPMENT

Note:
Railing generally to be a min 1100mm above ground level.

FOR TENDER

REVISION	DRN	CHKD	DATE
T1	First Issue	GC	08/09/2016
T2	Balustrade type BT3G removed	FC	15/09/2016



CLIENT
MOUNT ANVIL LTD

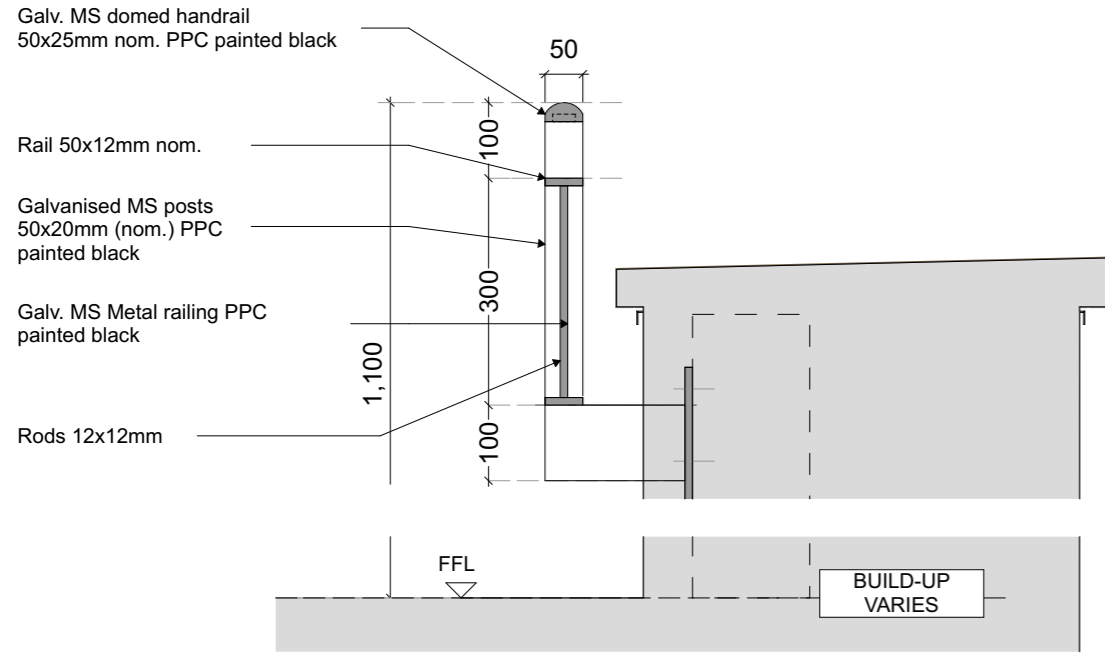
PROJECT
KIDDERPORE AVENUE

DRAWING
Generally Applicable
Typical Heritage Metalwork Details

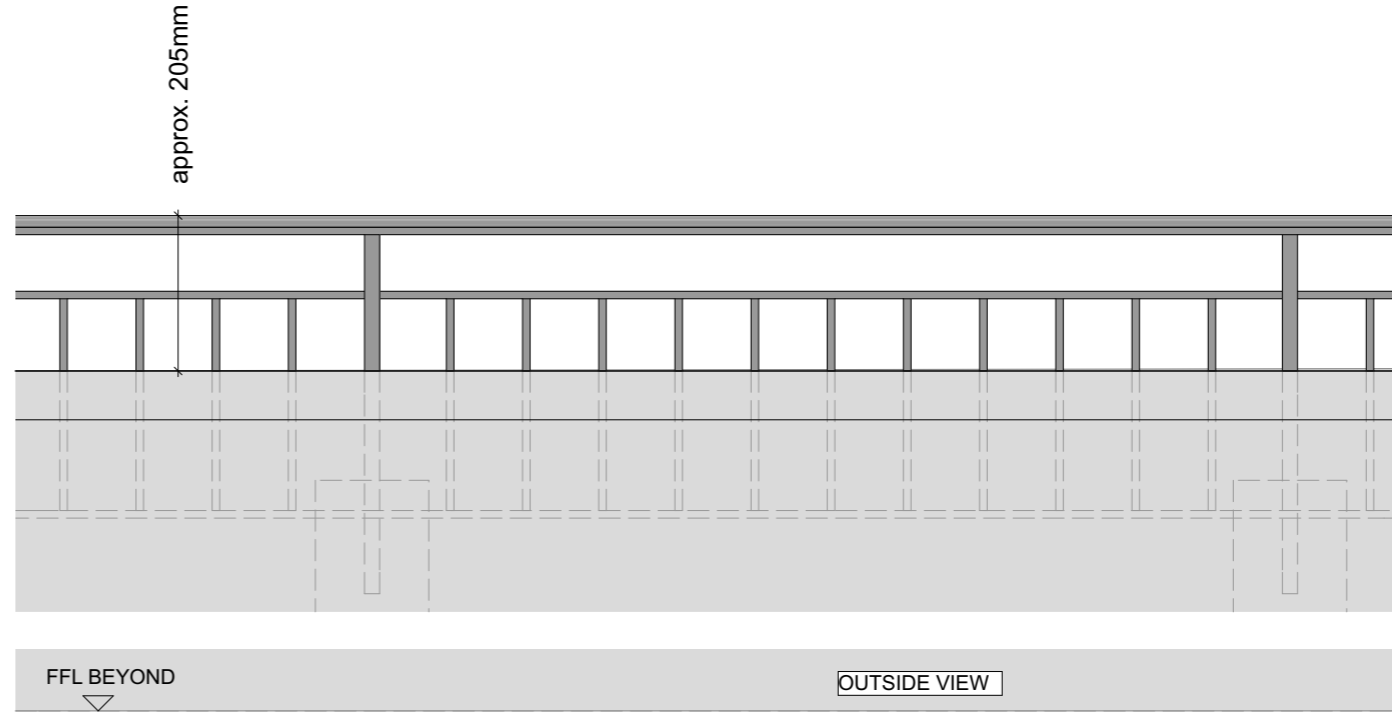
SCALE 1:20, 1:500, 1:10 @ A3 DATE
September 2016

DRAWING No. 15 230
9000-DRG-16GN- DE004
DRAWN BY GC
REV T1

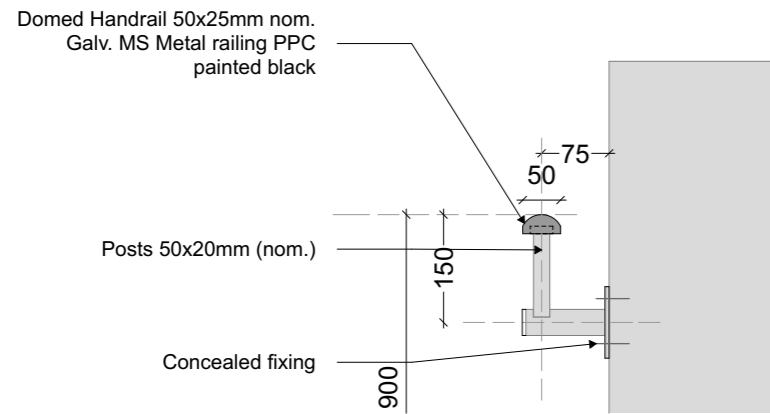
A & Q PARTNERSHIP (LONDON) LTD
THE LUX BUILDING, 2-4 HOXTON SQUARE, LONDON N1 6 NU
Tel: 020 7613 2244 Fax: 020 7613 2642 Email: london@aqp.co.uk
ARCHITECTURE DESIGN MASTERPLANNING INTERIORS



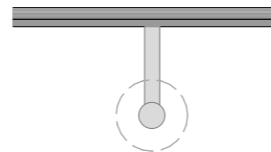
SECTION 1 - TYPICAL SIDE-FIXED MS METAL RAILING (MODERN)
TYPE - BT4
 1:10@A3



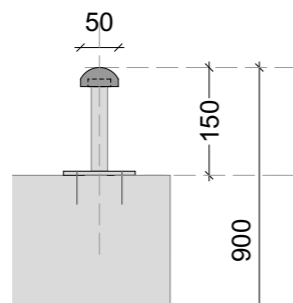
ELEVATION 1 - TYPICAL SIDE-FIXED MS METAL RAILING (MODERN)
 1:10@A3



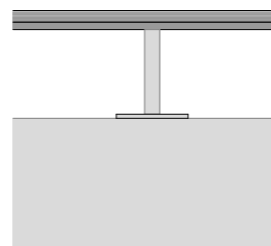
SECTION 2 - TYPICAL SIDE-FIXED MS METAL HANDRAIL (MODERN)
TYPE - BT5
 1:10@A3



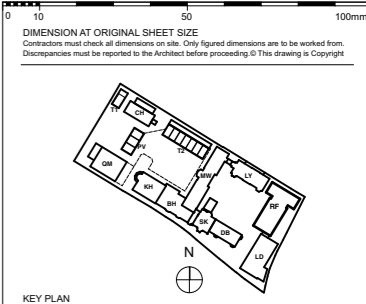
ELEVATION 2 - TYPICAL SIDE-FIXED MS METAL RAILING (MODERN)
 1:10@A3



SECTION 3 - TYPICAL TOP-FIXED MS METAL HANDRAIL (MODERN)
TYPE - BT5
 1:10@A3



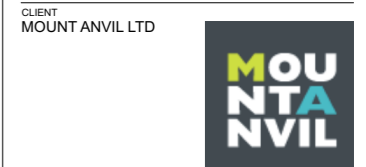
ELEVATION 3 - TYPICAL TOP-FIXED MS METAL RAILING (MODERN)
 1:10@A3



KEY PLAN

FOR TENDER

REVISION	DRN	CHKD	DATE
T1 First Issue	EC	TW	08/08/2016



PROJECT
 KIDDERPORE AVENUE

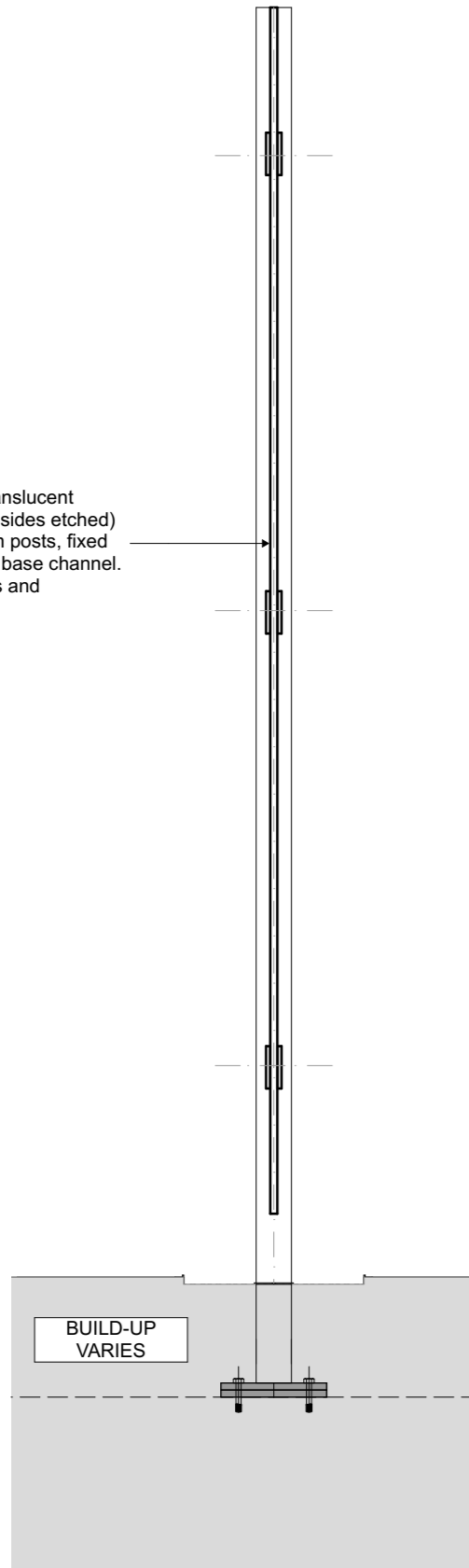
DRAWING
 Generally Applicable
 Balustrading Types - BT4 And BT5

SCALE As shown DATE
 May 2016

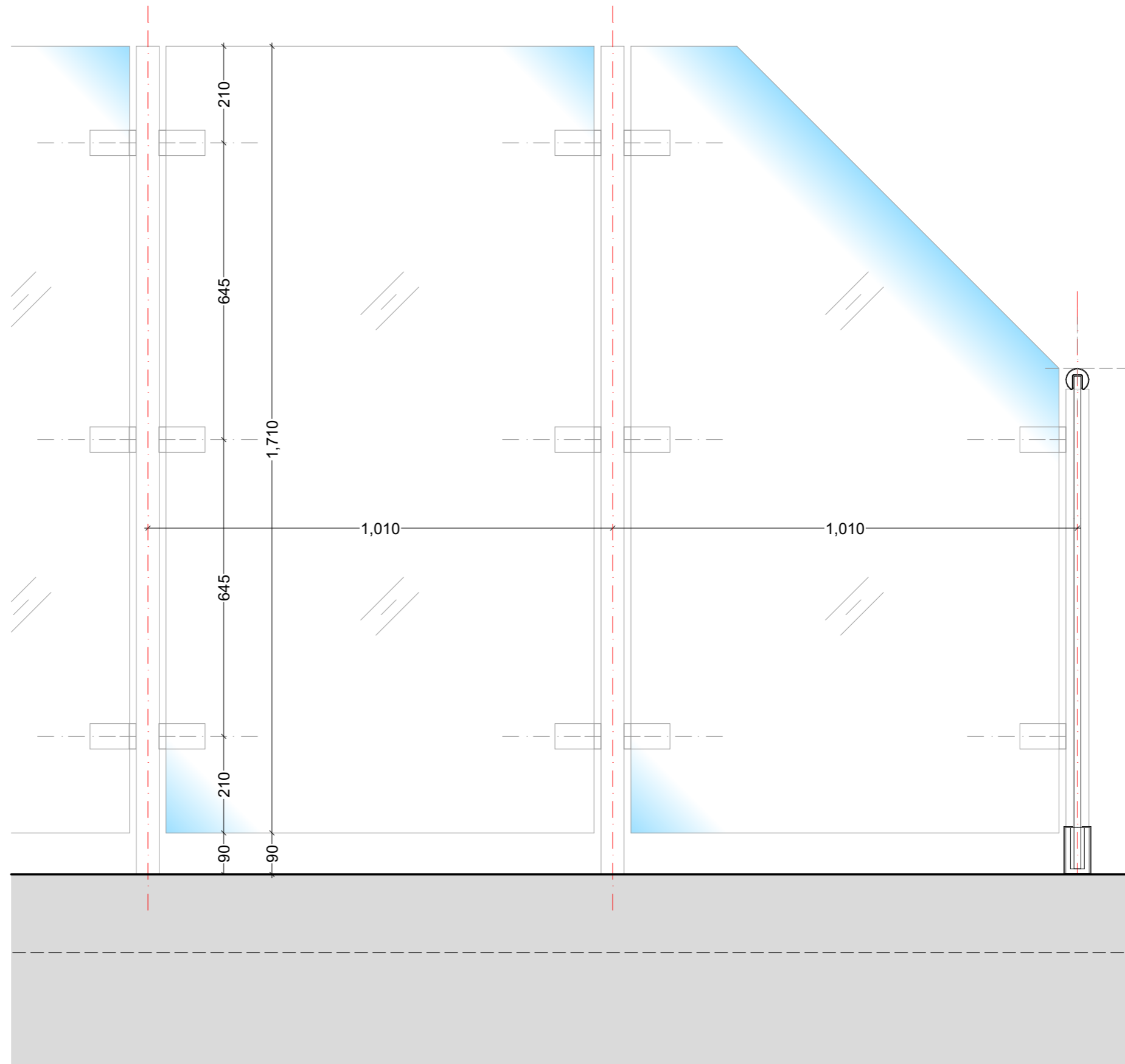
DRAWING No. 15 230 DRAWN BY EC
 9000-DRG-16GN-DE005 REV T1

A & Q PARTNERSHIP (LONDON) LTD
 THE LUX BUILDING, 2-4 HOXTON SQUARE, LONDON N1 6 NU
 Tel: 020 7613 2244 Fax: 020 7613 2642 Email: london@aqp.co.uk
 ARCHITECTURE DESIGN MASTERPLANNING INTERIORS

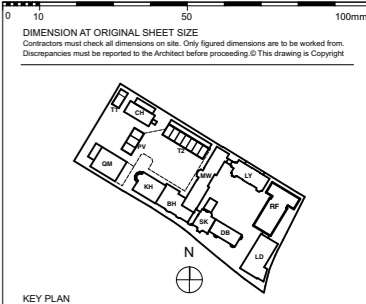
Privacy Screen with translucent toughened glass (both sides etched) fixed to PPC aluminium posts, fixed to concrete slab with a base channel. All to specialists details and recommendation.



SECTION 1 - TRANSLUCENT GLAZED PRIVACY SCREENS
1:10@A3



ELEVATION 1 - TRANSLUCENT GLAZED PRIVACY SCREENS
1:10@A3



FOR TENDER

REVISION	DRN	CHKD	DATE
T1	First Issue	EC TW	08/08/2016

A&Q
PARTNERSHIP

CLIENT
MOUNT ANVIL LTD

PROJECT
KIDDERPORE AVENUE

DRAWING
Generally Applicable
Balustrading Types - BT6

SCALE As shown DATE May 2016

DRAWING No. 15 230 DRAWN BY EC
9000-DRG-16GN-DE006 REV T1

A & Q PARTNERSHIP (LONDON) LTD
THE LUX BUILDING, 2-4 HOXTON SQUARE, LONDON N1 6 NU
Tel: 020 7613 2244 Fax: 020 7613 2642 Email: london@aqp.co.uk
ARCHITECTURE DESIGN MASTERPLANNING INTERIORS