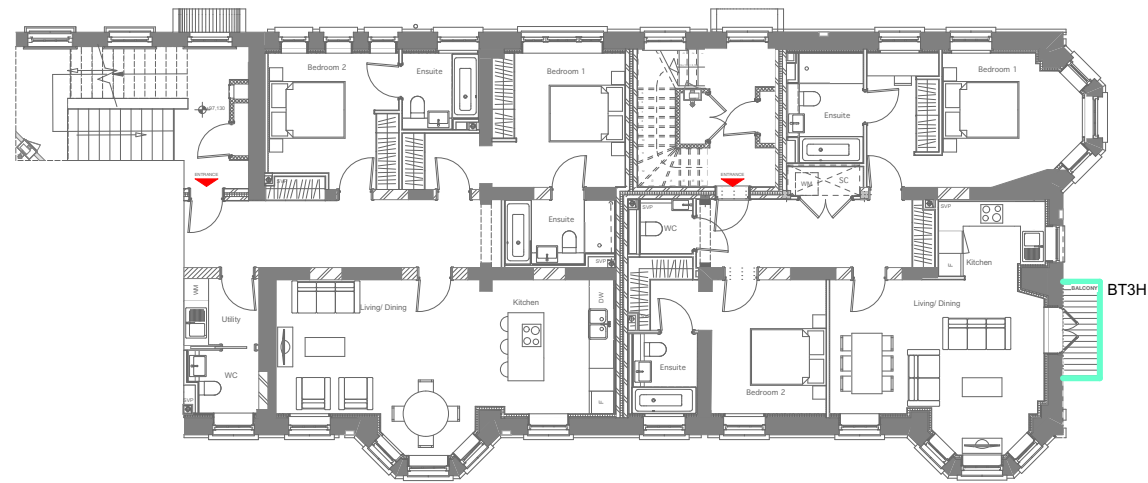


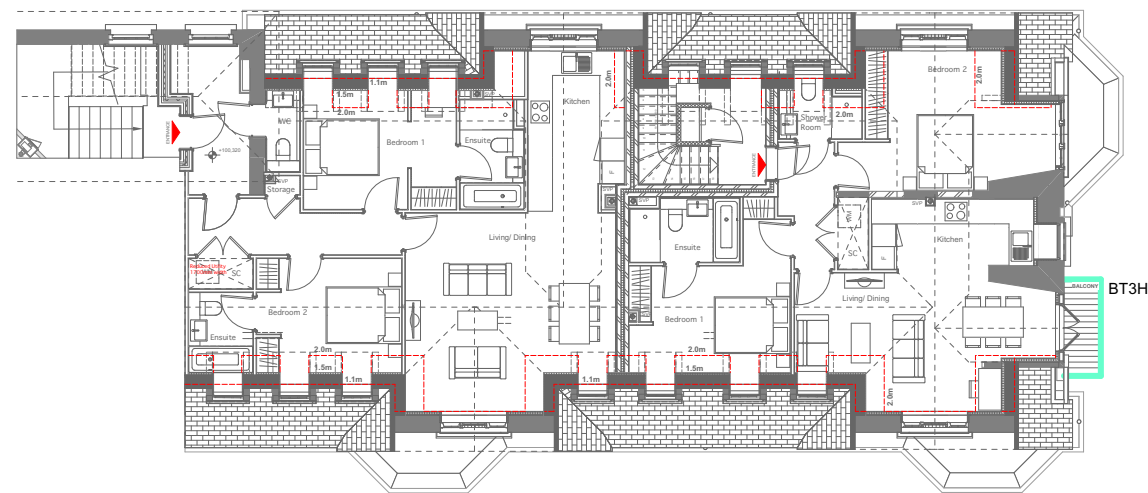
DB\_GROUND FLOOR

1:200



DB\_FIRST FLOOR

1:200



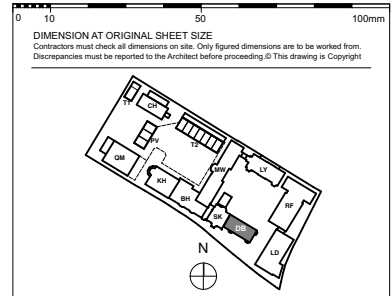
DB\_SECOND FLOOR

1:200

- |     |   |
|-----|---|
| BT1 | Glazed balustrade   |
| BT2 | MS Metal railing PPC painted black to New Build                         |
| BT3 | MS metal railings hand painted black generally to Heritage Buildings. * |
| BT4 | Side-fixed MS Metal railing PPC painted black to New Build              |
| BT5 | MS Metal handrails PPC painted black generally to New Build             |
| BT6 | Translucent glazed privacy screens - etched glass to both sides         |
| BT7 | Existing Railing to be Refurbished                                      |

Balustrading Types

\* Refer to BT3 Variation on Drawing 9000-DRG-00KH-DE901 & 9000-DRG-00GN-DE904



KEY PLAN

NOTE:  
ALL INFORMATION SHOWN ON THIS DRAWINGS IS SUBJECT TO  
DESIGN DEVELOPMENT

FOR TENDER

REVISION	DRN	CHKD	DATE
T1	First Issue	GC	TW
			08/08/2016

**A&Q**  
PARTNERSHIP

CLIENT  
MOUNT ANVIL LTD



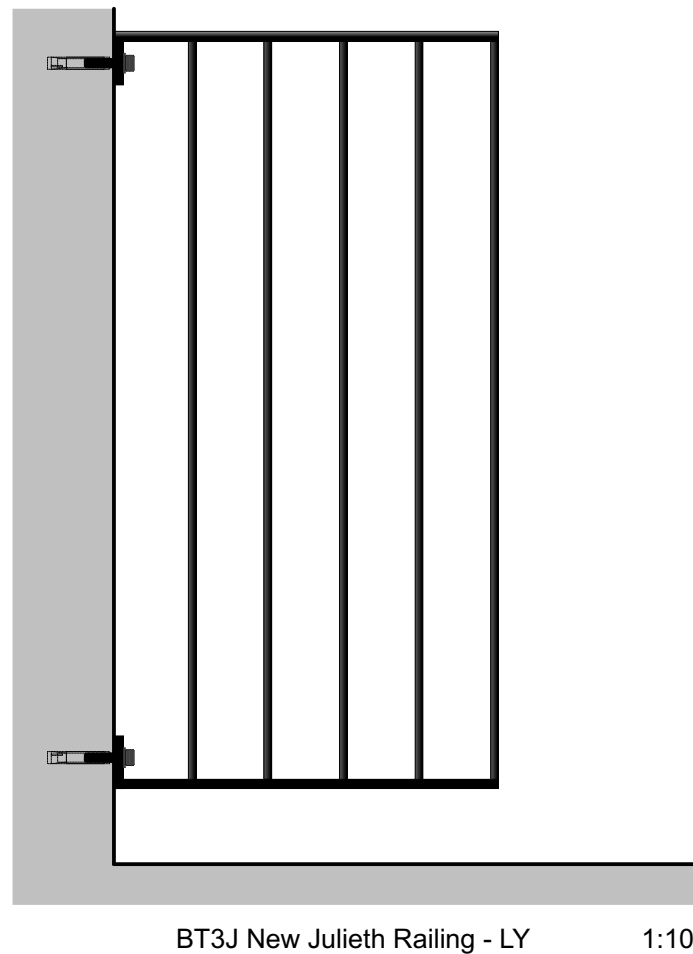
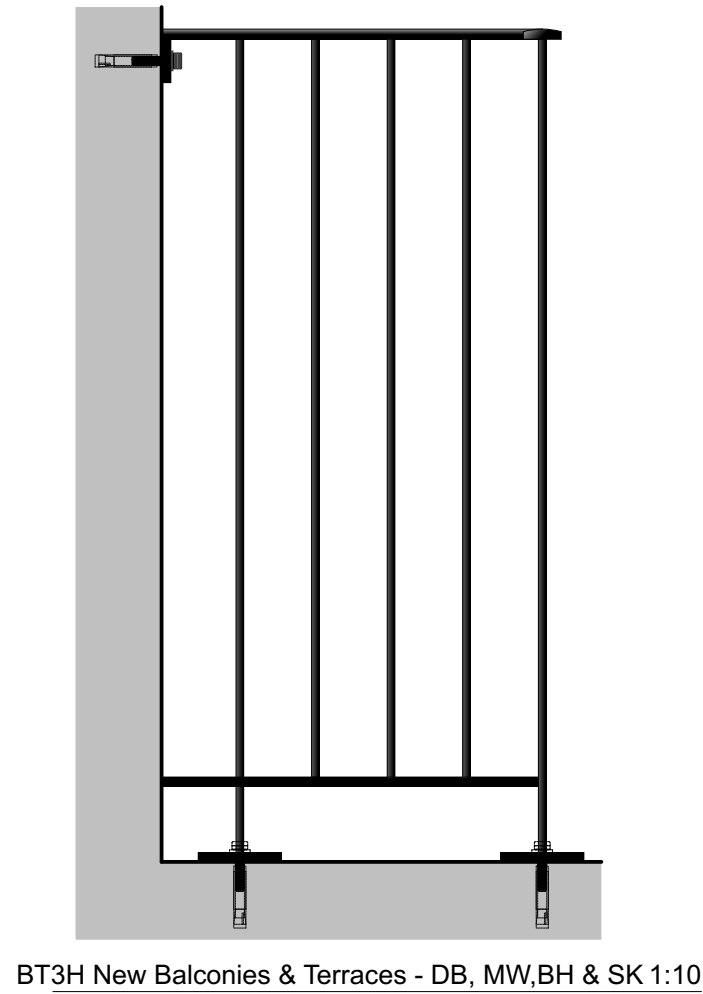
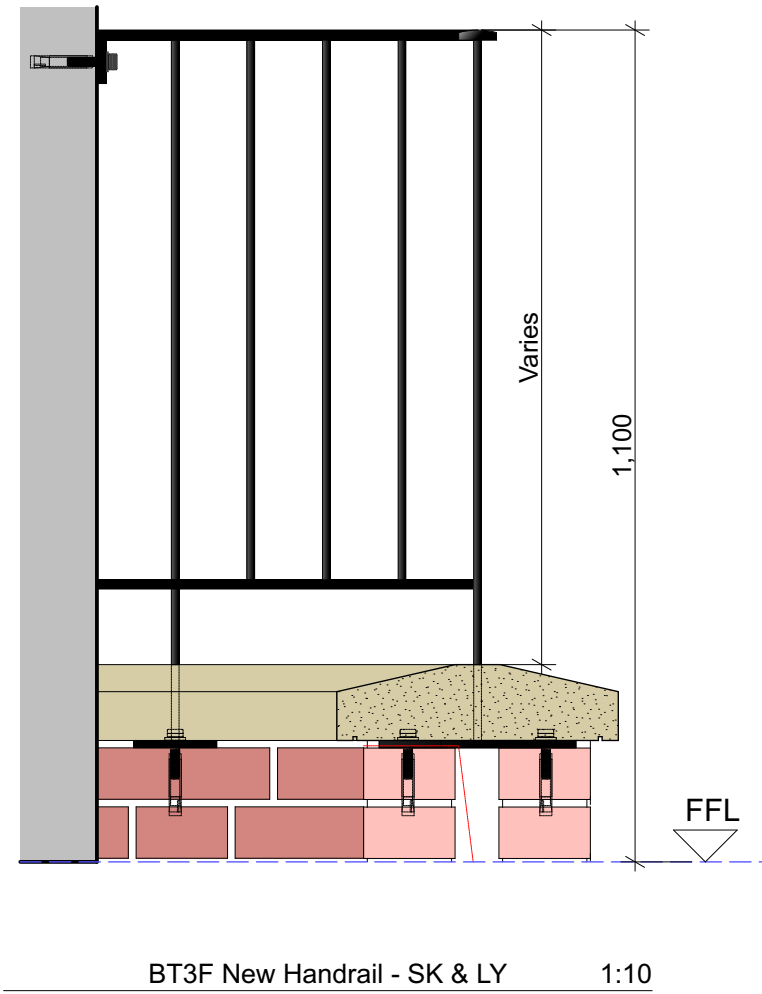
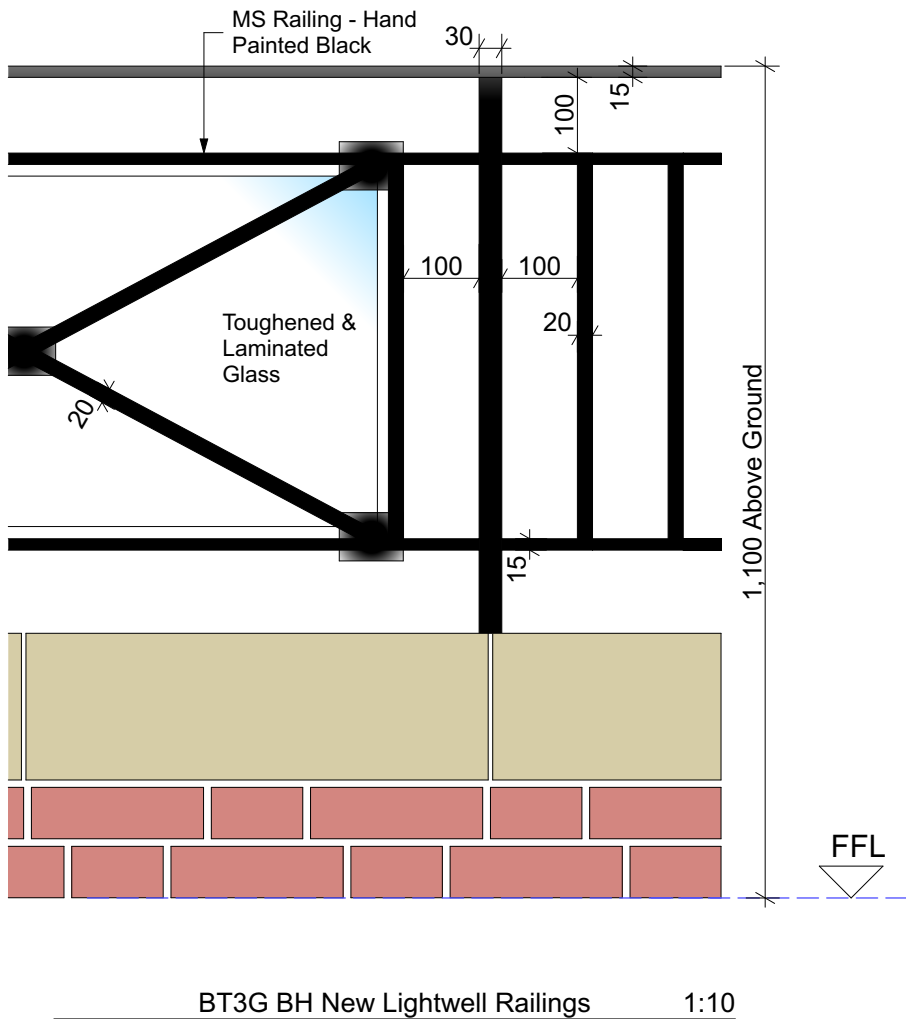
PROJECT  
KIDDERPORE AVENUE

DRAWING  
Dudin Brown  
Metalwork Diagram

SCALE 1:200 @ A3 DATE August 2016

DRAWING No. 15 230  
9000-DRG-16DB- VL001  
DRAWN BY GC  
REV T1

**A & Q PARTNERSHIP ( LONDON ) LTD**  
THE LUX BUILDING, 2-4 HOXTON SQUARE, LONDON N1 6 NU  
Tel: 020 7613 2244 Fax: 020 7613 2642 Email: london@aqp.co.uk  
ARCHITECTURE DESIGN MASTERPLANNING INTERIORS



0 10 25 50mm

DIMENSION AT ORIGINAL SHEET SIZE  
Contractors must check all dimensions on site. Only figured dimensions are to be worked from.  
Discrepancies must be reported to the Architect before proceeding. © This drawing is Copyright

KEY PLAN

NOTE:  
ALL INFORMATION SHOWN ON THIS DRAWINGS IS SUBJECT TO  
DESIGN DEVELOPMENT

Note:  
Railing generally to be a min 1100mm  
above ground level.

FOR TENDER

REVISION	DRN	CHKD	DATE
T1	First Issue	GC	08/08/2016
T2	Balustrade type BT3G removed	FW	15/09/2016

A&Q PARTNERSHIP

CLIENT  
MOUNT ANVIL LTD

PROJECT  
KIDDERPORE AVENUE

DRAWING  
Generally Applicable  
Typical Heritage Metalwork Details

SCALE 1:20, 1:500, 1:10 @ A3

DATE  
September 2016

DRAWING No. 15 230  
9000-DRG-16GN- DE004

DRAWN BY  
GC  
REV  
T1

A & Q PARTNERSHIP (LONDON) LTD  
THE LUX BUILDING, 2-4 HOXTON SQUARE, LONDON N1 6 NU  
Tel: 020 7613 2244 Fax: 020 7613 2642 Email: london@aqp.co.uk  
ARCHITECTURE DESIGN MASTERPLANNING INTERIORS