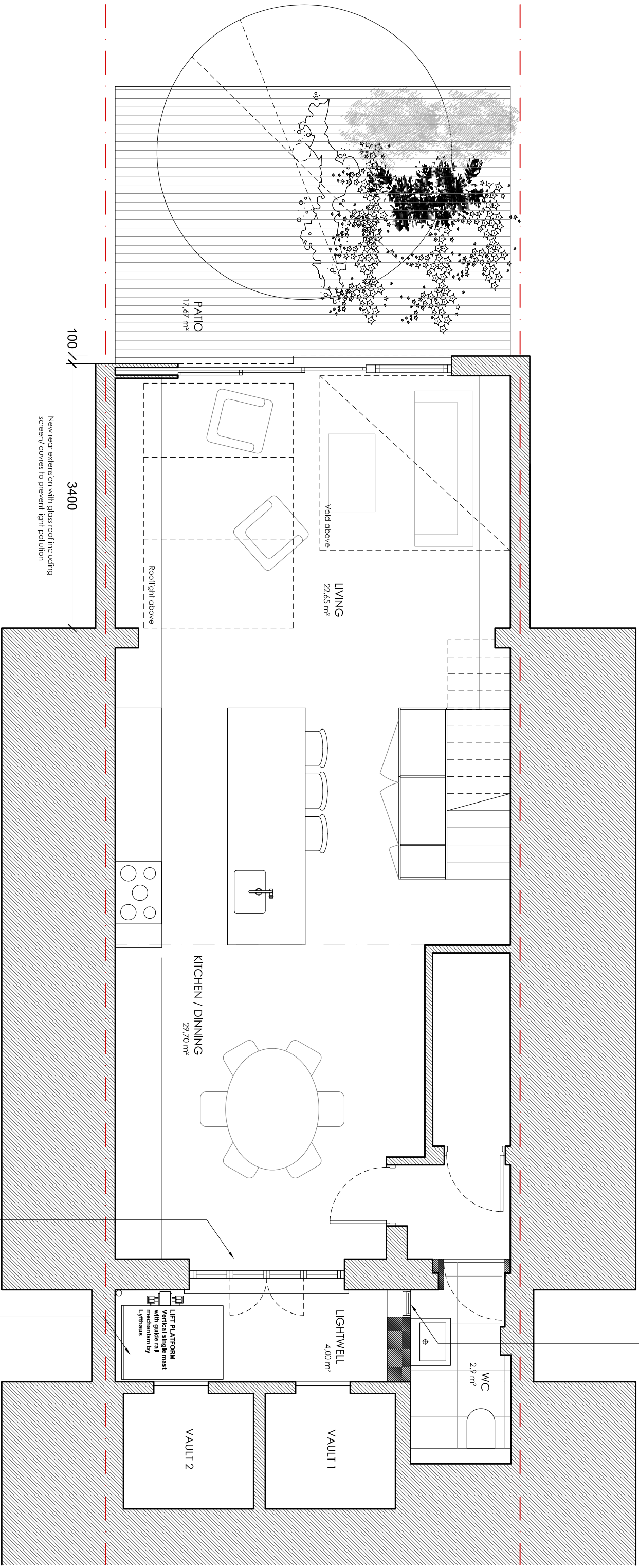


NOTES
DO NOT SCALE FROM THIS DRAWING

PLANNING

NOTE:
Rev A: New works in lightwell & new rear extension updated 02-02-2017



New french doors to lightwell

New lift platform

New rear extension with glass roof including screen/louvers to prevent light pollution

New window to lightwell (existing small door removed)

PATIO
17.67 m²

LIVING
22.65 m²

KITCHEN / DINNING
29.70 m²

LIGHTWELL
4.00 m²

WC
2.9 m²

VAULT 2

VAULT 1

LIFT PLATFORM
with guide rail
mechanism by
Lyfhäus

Martin Evans
Architects ©

18 Charlotte Road
London, EC2A 3PB
Tel 020 7729 2474

JOB
17, EDIS STREET
NW1 8LE
LONDON

TITLE
BASEMENT
(PROPOSED)

DATE 20.02.2014

SCALE 1:50 @ A3

DRAWN C.F.

DRAWING NO. EDI-PL-GA-01A

