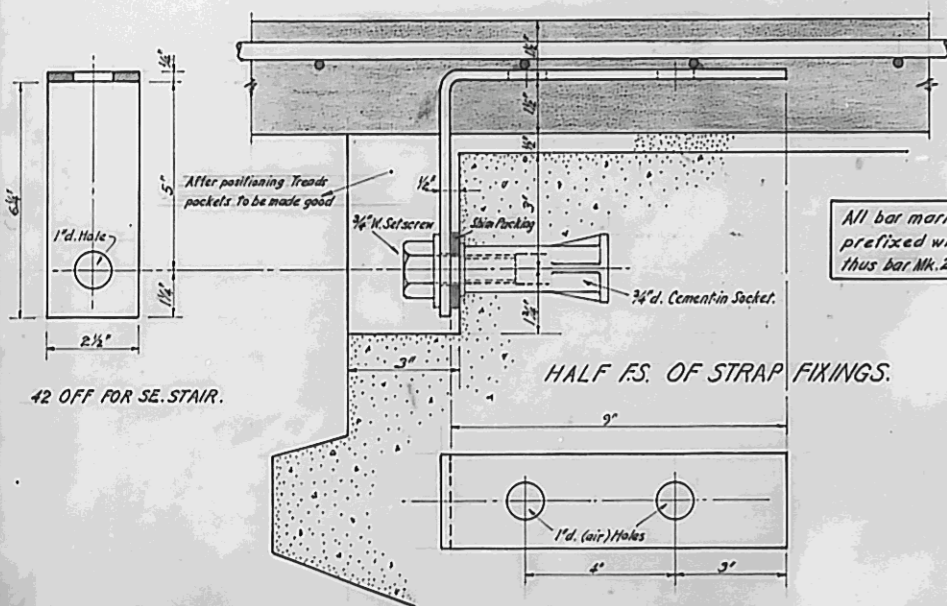
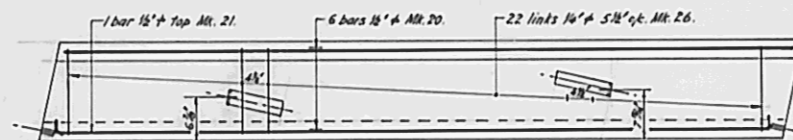


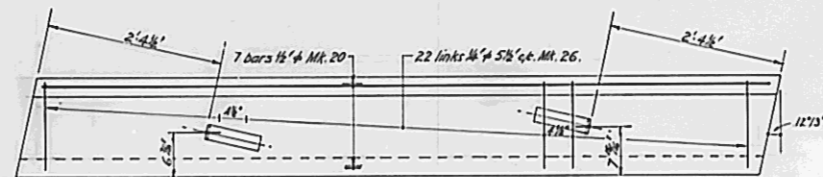
GENERAL ARRANGEMENT, (1/2" SCALE)



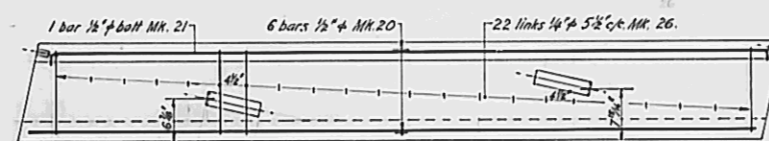
All bar marks on this drawing to be prefixed with 139.. Thus bar MK.20 is scheduled as 13920.



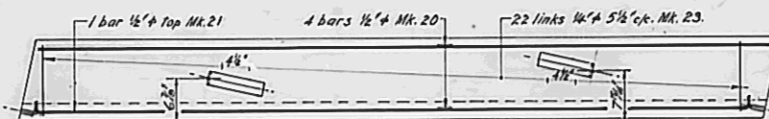
TREAD G, 3 THUS.



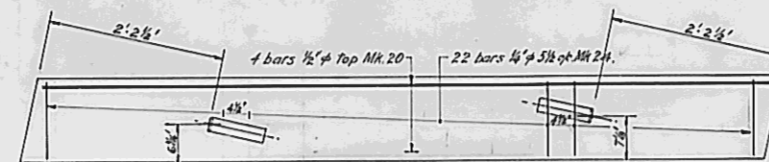
TREAD H, 9 THUS.



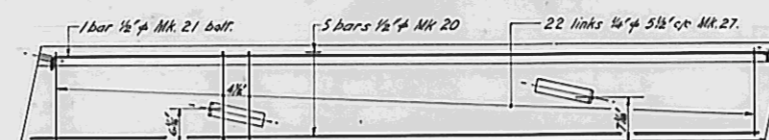
TREAD J, 3 THUS.



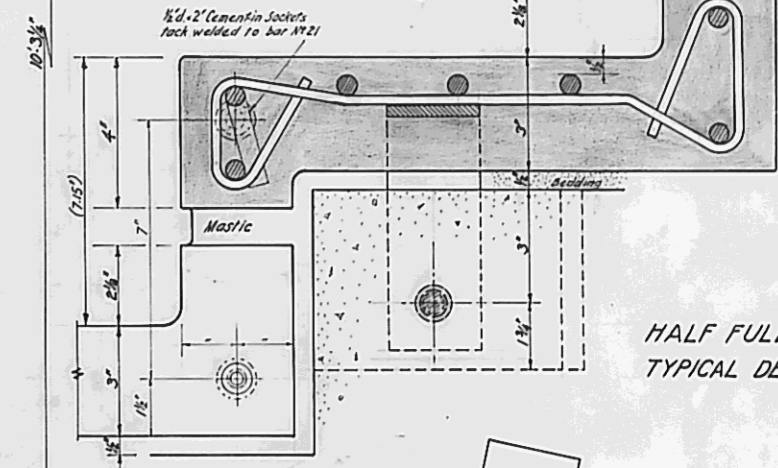
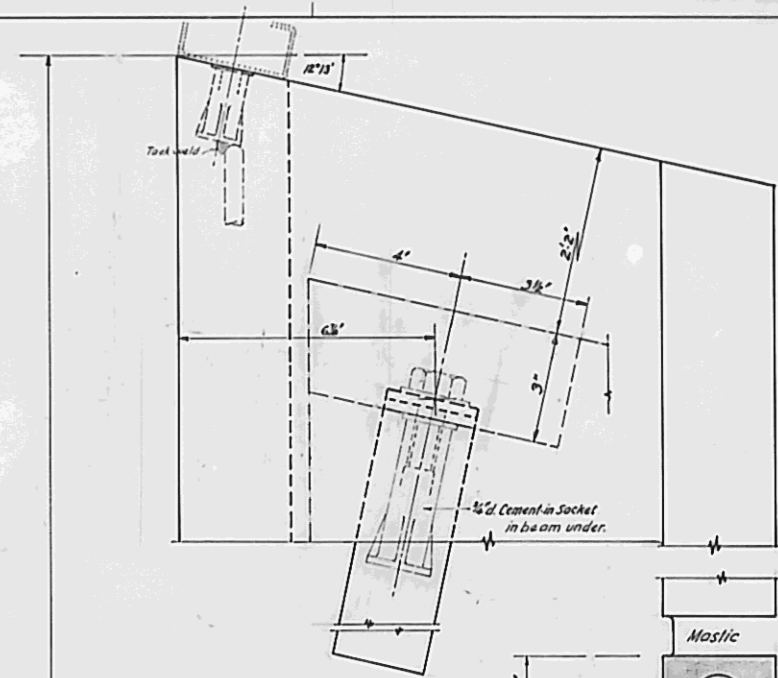
TREAD K, 2 THUS.



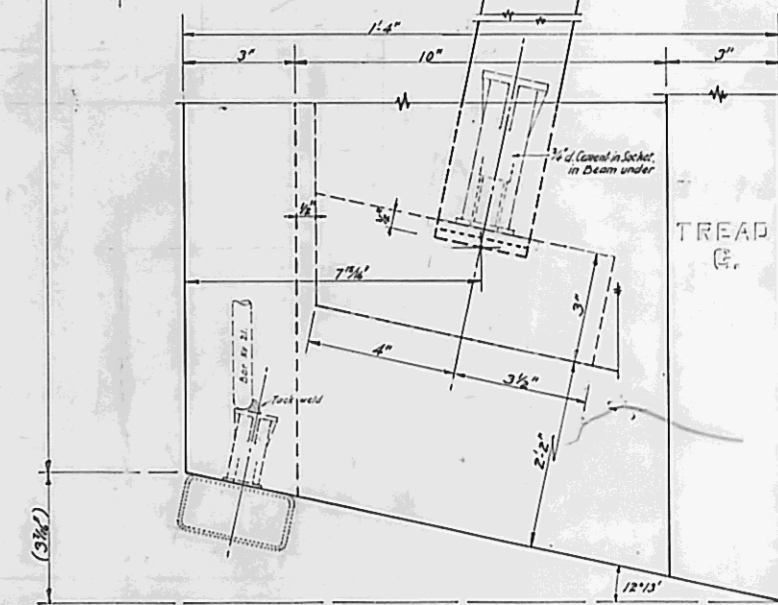
TREAD L, 3 THUS.



TREAD M, 1 ONLY.



HALF FULL SIZE TYPICAL DETAILS.



TREAD E.

NOTES	REVISIONS	ARCHITECTS
<ol style="list-style-type: none"> QUALITY OF VIBRATED TERRAZZO TO BE 6000 LB/90 INCH AT 28 DAYS. COVER TO BARS ANYWHERE NOT LESS THAN 1 1/2" THIS DRAWING TO BE READ IN CONJUNCTION WITH DRAWING No. 2071/857 (SUB-STRUCTURE). RELEVANT BENDING SCHEDULES: 2071/1386-7. DIMENSIONS TO BE VERIFIED ON SITE. 		R. SEIFERT & PARTNERS 34 RED LION SQUARE, LONDON, W. C. 1.

CROYDON OFFICE:- FRITH HOUSE, FRITH ROAD, CROYDON, SURREY.	
ST. GILES CIRCUS TOWER BLOCK	
PRECAST TERRAZZO TREADS TO SOUTH EAST CANTILEVER STAIRS	
DESIGNED T.G. JUNE 1965.	DRAWING No.
DRAWN C.J.W. JULY 1965.	2071/865
CHECKED	
SCALES:- 1/2", 1" & 6" TO 1 FOOT.	