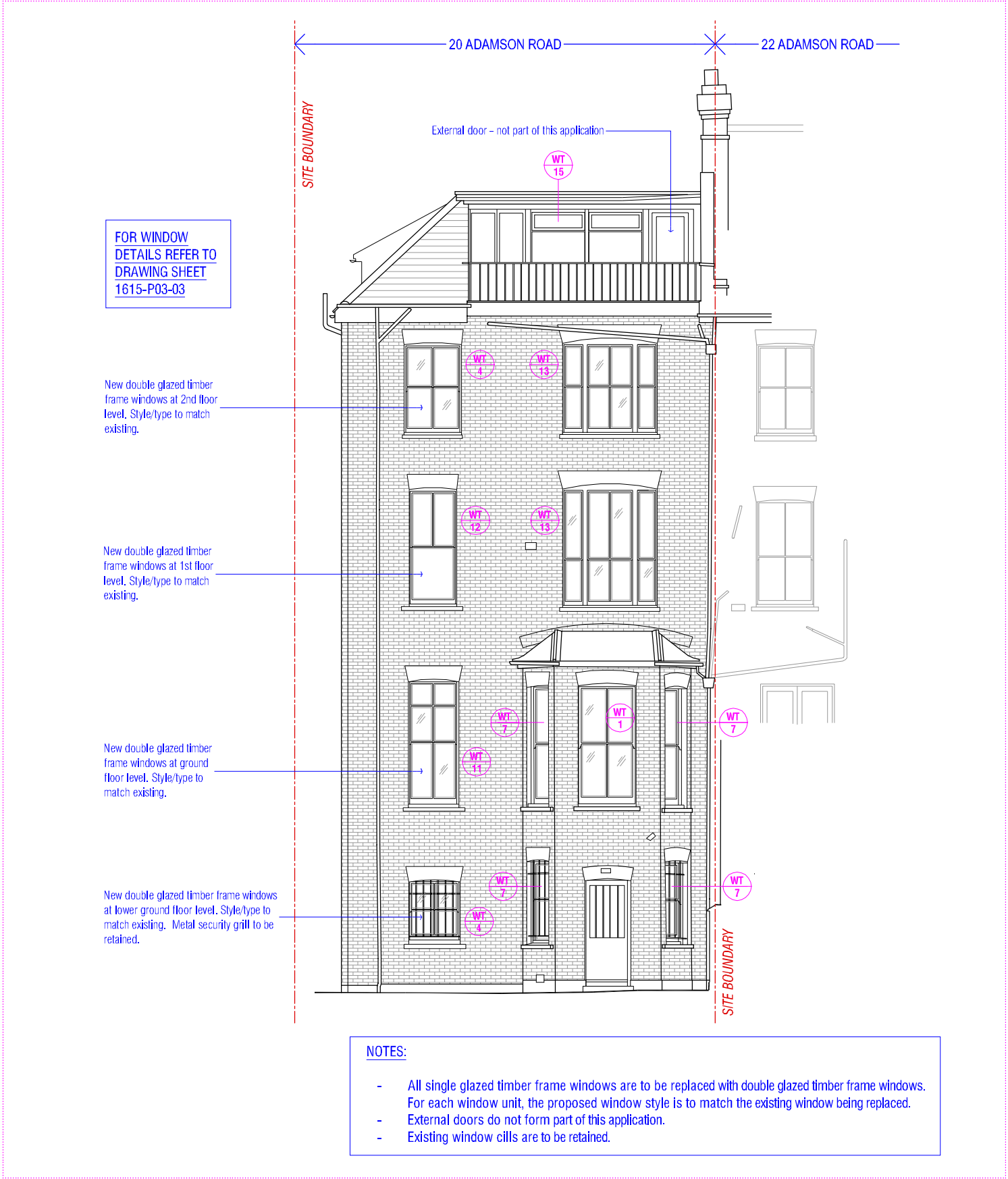


[01] PROPOSED WEST ELEVATION



[02] PROPOSED EAST ELEVATION

<div>NOTE:</div> <div>DO NOT SCALE FROM DRAWINGS – EXCEPT FOR PLANNING PURPOSES.</div> <div>ALL DISCREPANCIES TO BE REPORTED TO ARCHITECT IMMEDIATELY.</div> <div>ALL DIMENSIONS TO BE VERIFIED BY CONTRACTOR ON SITE PRIOR TO THE COMMENCEMENT OF ANY WORKS.</div>		<div>P103/02/17Issue for planning approval</div>		<div>ISO-A3</div>		<div>VIVENDI ARCHITECTS LTD</div> <div>Unit E3U, Bounds Green Industrial Estate, Ringway, London N11 2UD</div> <div>Tel/Fax +44 (0)20 3232 4000 - email: info@vivendiarchitects.com</div> <div>© VIVENDI ARCHITECTS LTD 2009</div> <div>All rights reserved, including but not limited to The Copyright, Designs and Patents Act 1988</div>		<div>CLIENT:</div> <div>MR. V. DEROUKAKIS</div>		<div>DRAWN:</div> <div>AH</div> <div>CHECKED:</div> <div>GK</div> <div>ISSUED BY:</div> <div>GK</div>		<div>STATUS:</div> <div>PLA</div> <div>SCALE AT A3:</div> <div>1:100</div> <div>REVISION:</div> <div>P1</div>	
<div>Scale 1:100</div> <div><div>0</div><div>1</div><div>2.5</div><div>5</div><div>10m</div></div>						<div>PROJECT TITLE:</div> <div>20 ADAMSON ROAD, LONDON, NW3 3HR</div>		<div>DRAWING TITLE:</div> <div>PROPOSED WEST ELEVATION / PROPOSED EAST ELEVATION</div>		<div>JOB AND DRAWING NO:</div> <div>1615-P03-01</div>			