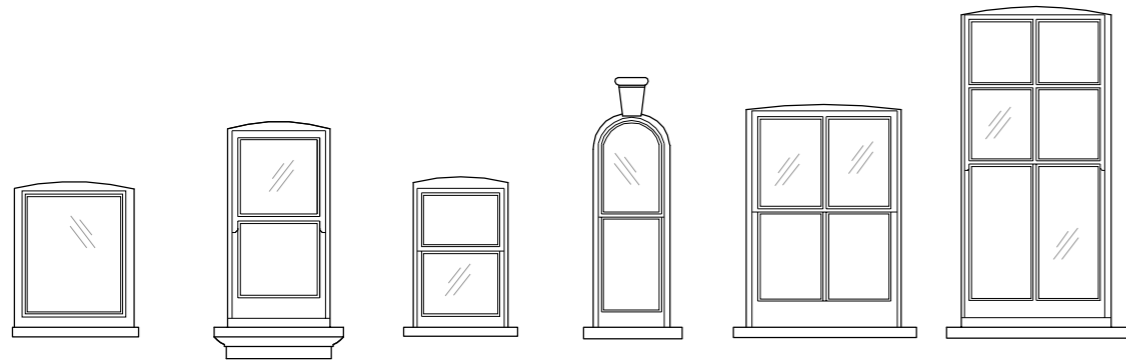
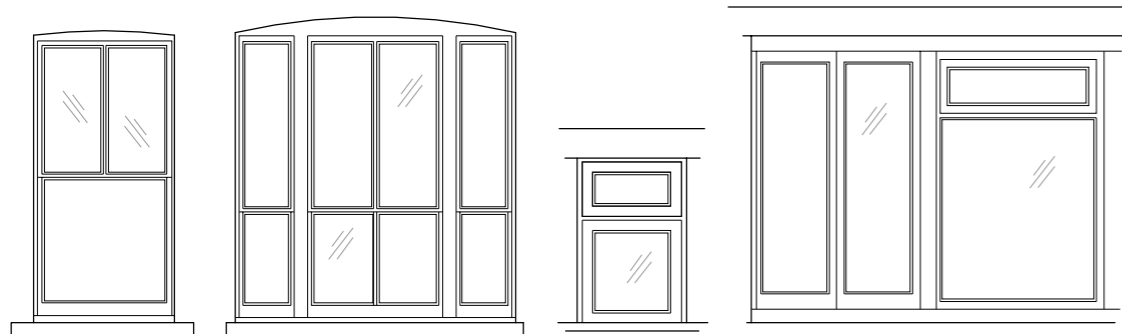


WT-1	WT-2	WT-3	WT-4	WT-5
Timber Frame / Sash	Timber Frame / Sash	Timber Frame / Sash	Timber Frame / Sash	Tim. Frame / Casement
HT-1	HT-2	HT-3	HT-4	N/A



WT-6	WT-7	WT-8	WT-9	WT-10	WT-11
Timber Frame / Casement	Timber Frame / Sash	Timber Frame / Sash	Tim. Frame / Sash	Timber Frame / Sash	Timber Frame / Sash
N/A	HT-1 or HT-4	N/A	N/A	N/A	HT-4

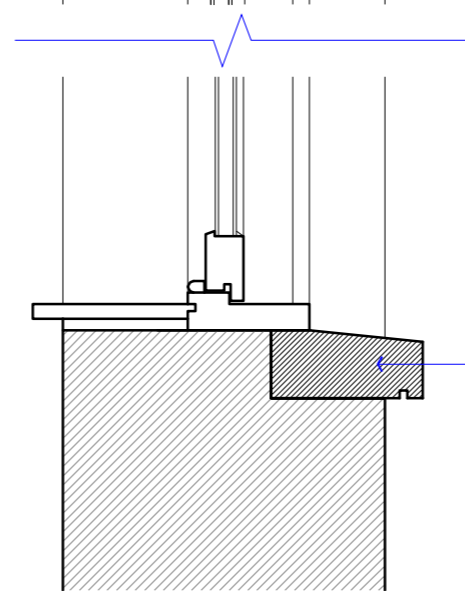
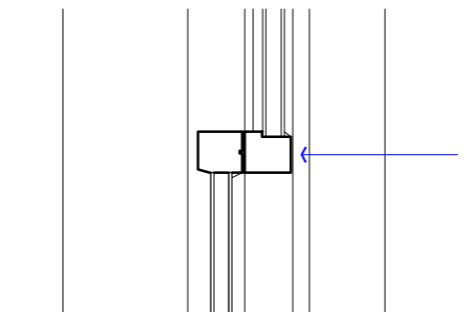
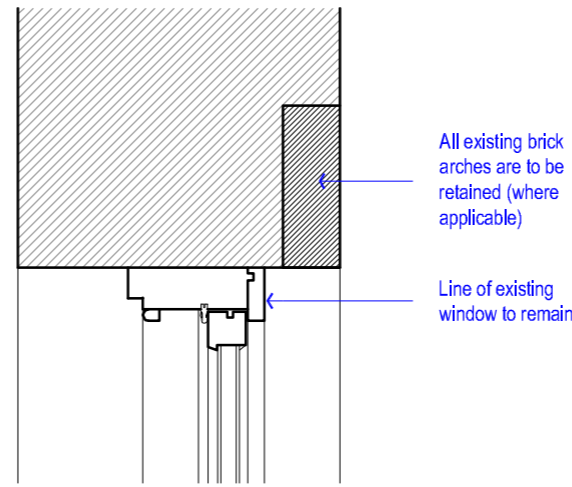


WT-12	WT-13	WT-14	WT-15
Timber Frame / Sash	Timber Frame / Sash	Tim. Fr. / Casement	Timber Frame / Casement or Full Height (fixed)
N/A	N/A	N/A	N/A



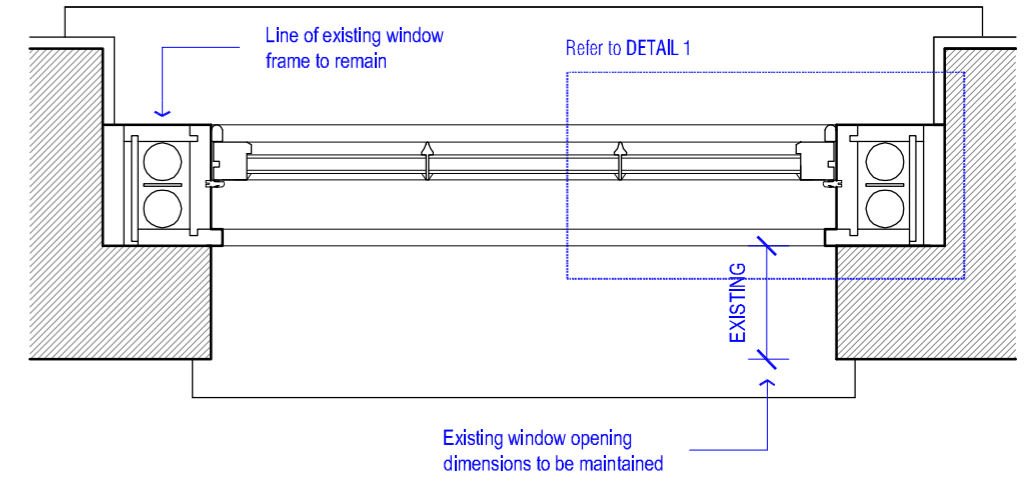
[01] PROPOSED WINDOW SCHEDULE

1:50

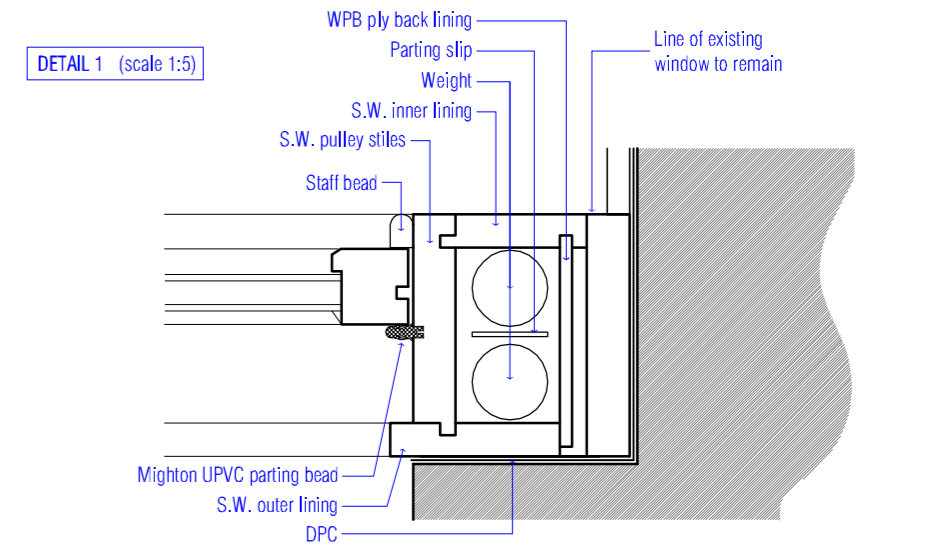


[03] SASH WINDOW - SECTION 1:10

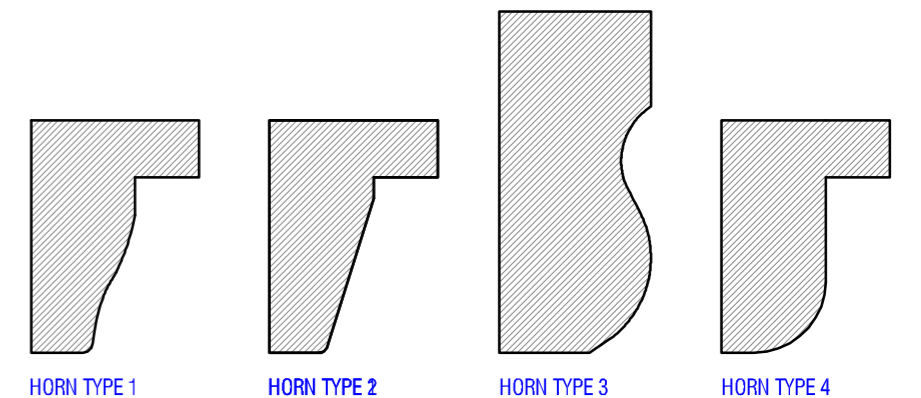
NOTE:
PROPOSED TIMBER FRAME DIMENSIONS TO MATCH EXISTING TIMBER FRAMES



[04] SASH WINDOW - PLAN 1:10



[05] SASH WINDOW - PLAN 1:5



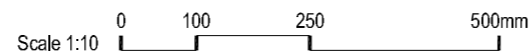
[06] SASH WINDOW - HORN PROFILES NTS

[02] PROPOSED SASH WINDOW DETAILS - TYPICAL

1:10 & 1:5

NOTE:
DO NOT SCALE FROM DRAWINGS - EXCEPT FOR PLANNING PURPOSES.
ALL DISCREPANCIES TO BE REPORTED TO ARCHITECT IMMEDIATELY.
ALL DIMENSIONS TO BE VERIFIED BY CONTRACTOR ON SITE PRIOR TO THE COMMENCEMENT OF ANY WORKS.

P1 03/02/17 Issue for planning approval



VIVENDI ARCHITECTS LTD
Unit E3U, Bounds Green Industrial Estate, Ringway, London N11 2UD
Tel/Fax +44 (0)20 3232 4000 - email: info@vivendiarchitects.com
© VIVENDI ARCHITECTS LTD 2009
All rights reserved, including but not limited to The Copyright, Designs and Patents Act 1988
PROJECT TITLE:
20 ADAMSON ROAD, LONDON, NW3 3HR
DRAWING TITLE:
PROPOSED WINDOW SCHEDULE / WINDOW SECTIONS

CLIENT:
MR. V. DEROUKAKIS

DRAWN:
AH
CHECKED:
GK
ISSUED BY:
GK
STATUS:
PLA
SCALE AT A3:
VARIES
REVISION:
P1
JOB AND DRAWING NO:

1615-P03-03