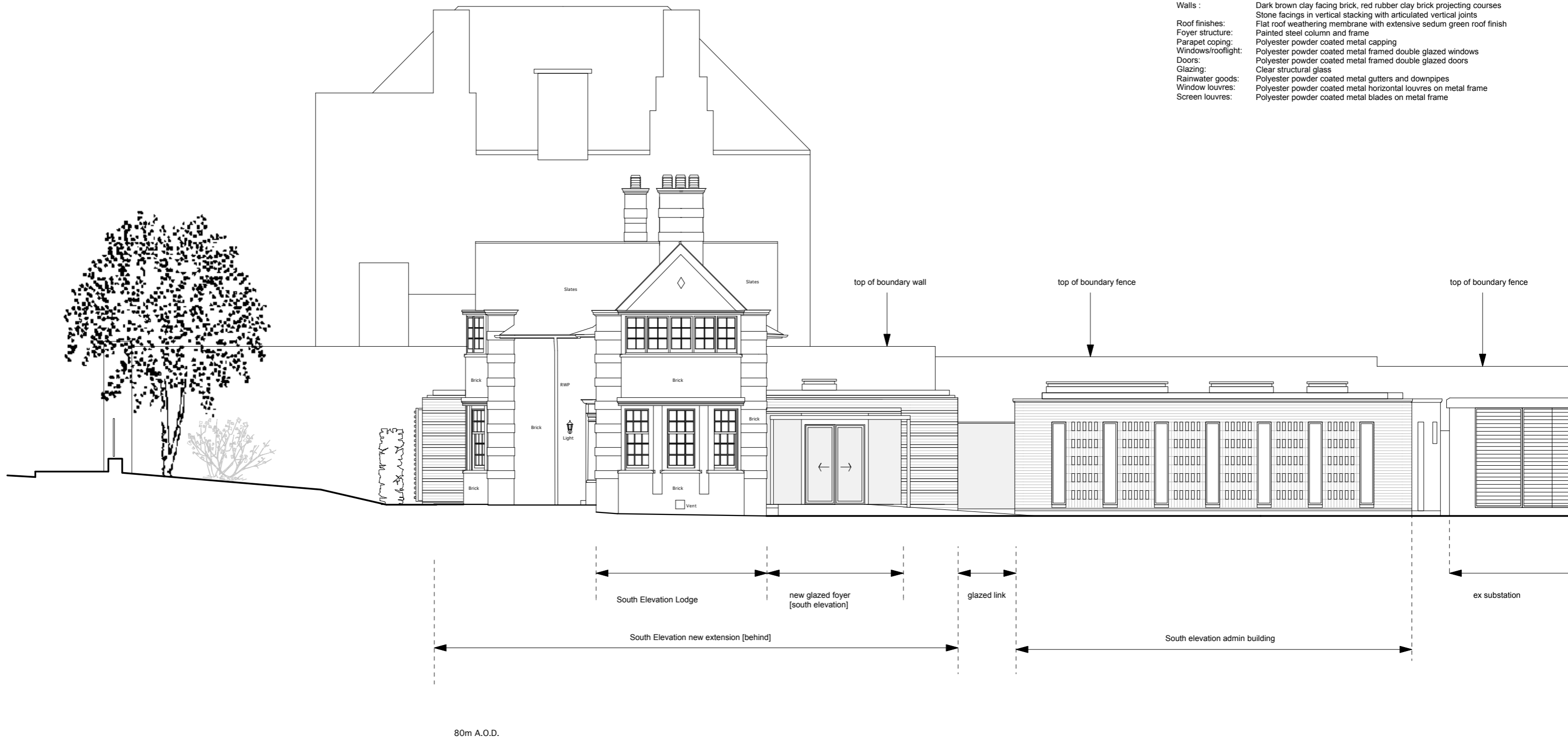


Existing materials to Lodge retained:

Walls & chimneys: Dark brown clay facing brick, red rubber clay brick, Ham stone dressings, details and panels
 Roof finishes: Pitched roof natural slate tiles with lead flashings and flat roofs
 Windows/rooflight: White painted timber single glazed windows
 Doors: Colour painted timber doors
 Glazing: Clear glass
 Rainwater goods: Black painted cast iron gutters and downpipes
 Louvres: Black painted traditional floor vents

Proposed materials to new extension:

Walls : Dark brown clay facing brick, red rubber clay brick projecting courses
 Stone facings in vertical stacking with articulated vertical joints
 Roof finishes: Flat roof weathering membrane with extensive sedum green roof finish
 Foyer structure: Painted steel column and frame
 Parapet coping: Polyester powder coated metal capping
 Windows/rooflight: Polyester powder coated metal framed double glazed windows
 Doors: Polyester powder coated metal framed double glazed doors
 Glazing: Clear structural glass
 Rainwater goods: Polyester powder coated metal gutters and downpipes
 Window louvres: Polyester powder coated metal horizontal louvres on metal frame
 Screen louvres: Polyester powder coated metal blades on metal frame



ed toovey architects

studio 401 royle building
 31 wenlock road
 london n1 7sh
 07880 725763 / 020 3632 3776
 edtoovey@yahoo.co.uk

Revisions:

PLANNING ISSUE

- Do not scale for construction
 - Always take site measurements to verify dimensions
 - Refer to M&E Engineers drawings for all services

UCS Lodge

South elevation proposed

September 2016

Drwg No. 1117C / GE / 012-

Scale 1:100 @ A3