



Pack Issue:	Option:
-------------	---------

E	F
---	---

88-90 HATTON GARDEN  
LONDON  
EC1N 8PN

86115

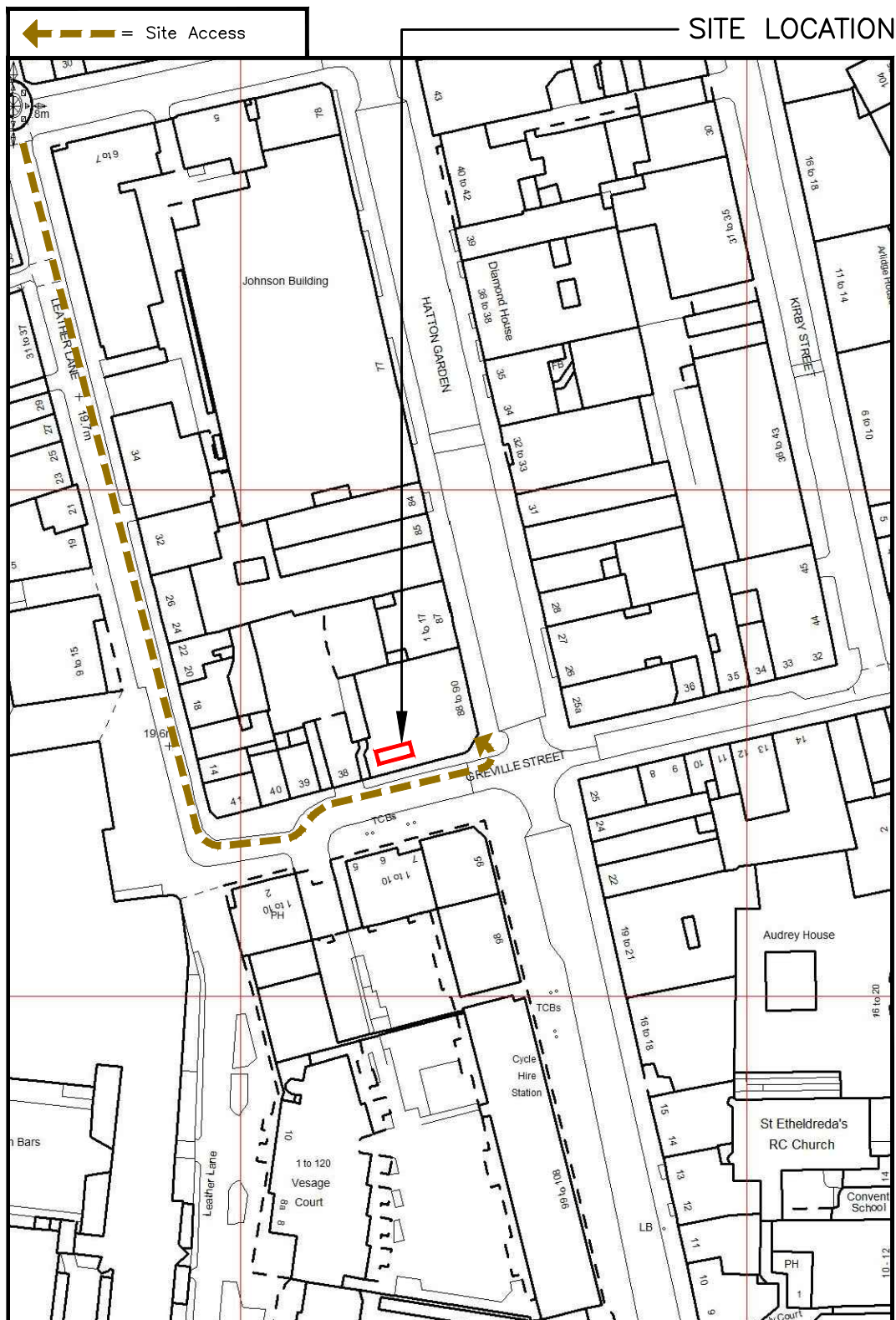
1

--	--





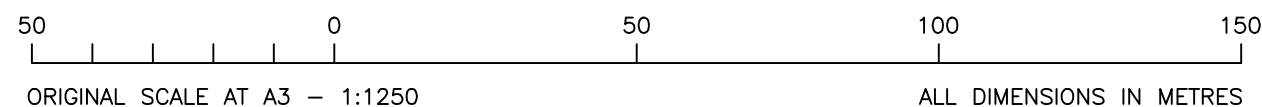




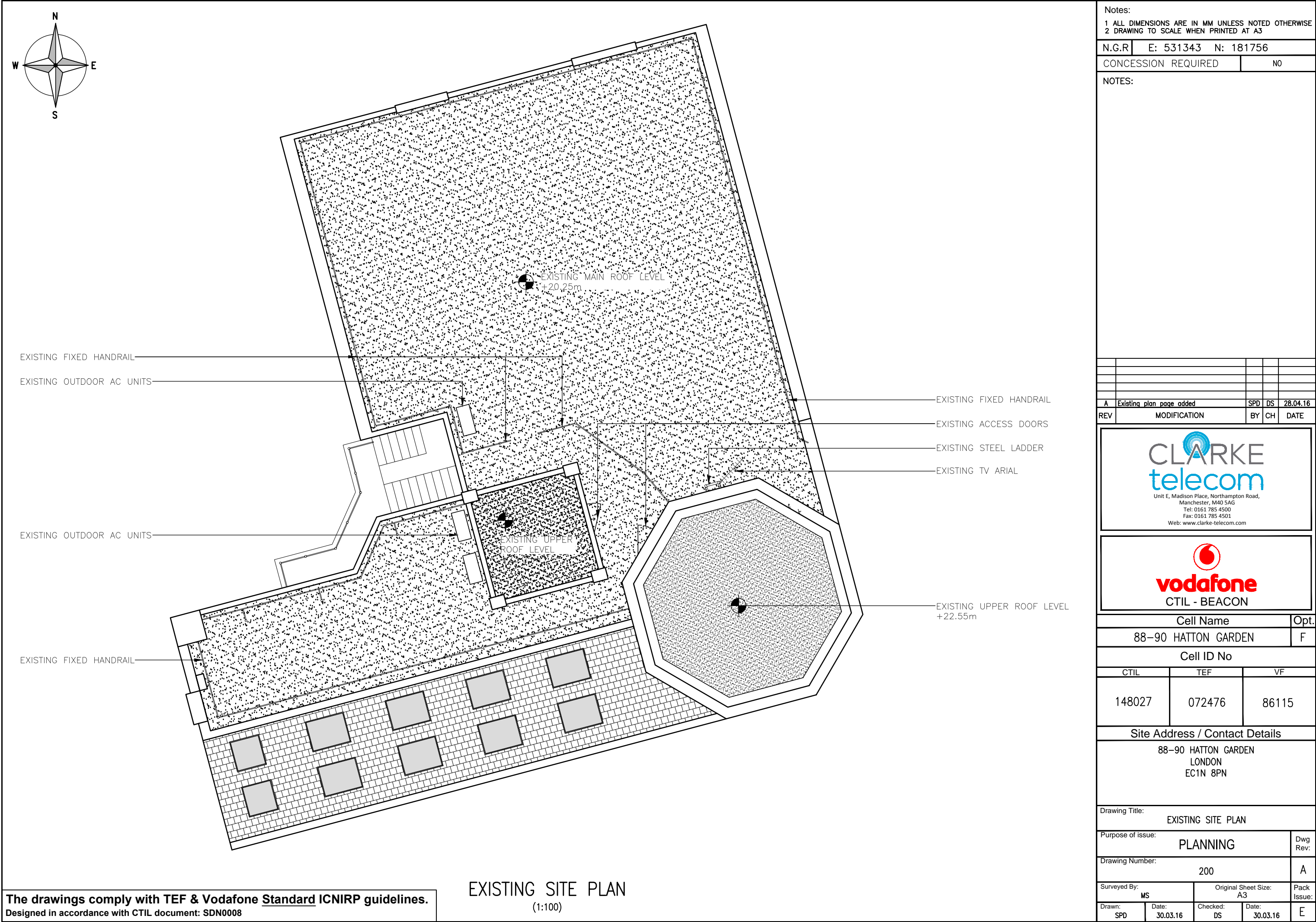
Based upon Ordnance Survey map extract  
with the permission of the Controller of  
Her Majesty's Stationery Office.  
Crown copyright.  
Licence No. 100020449

5000 0 5000 10000

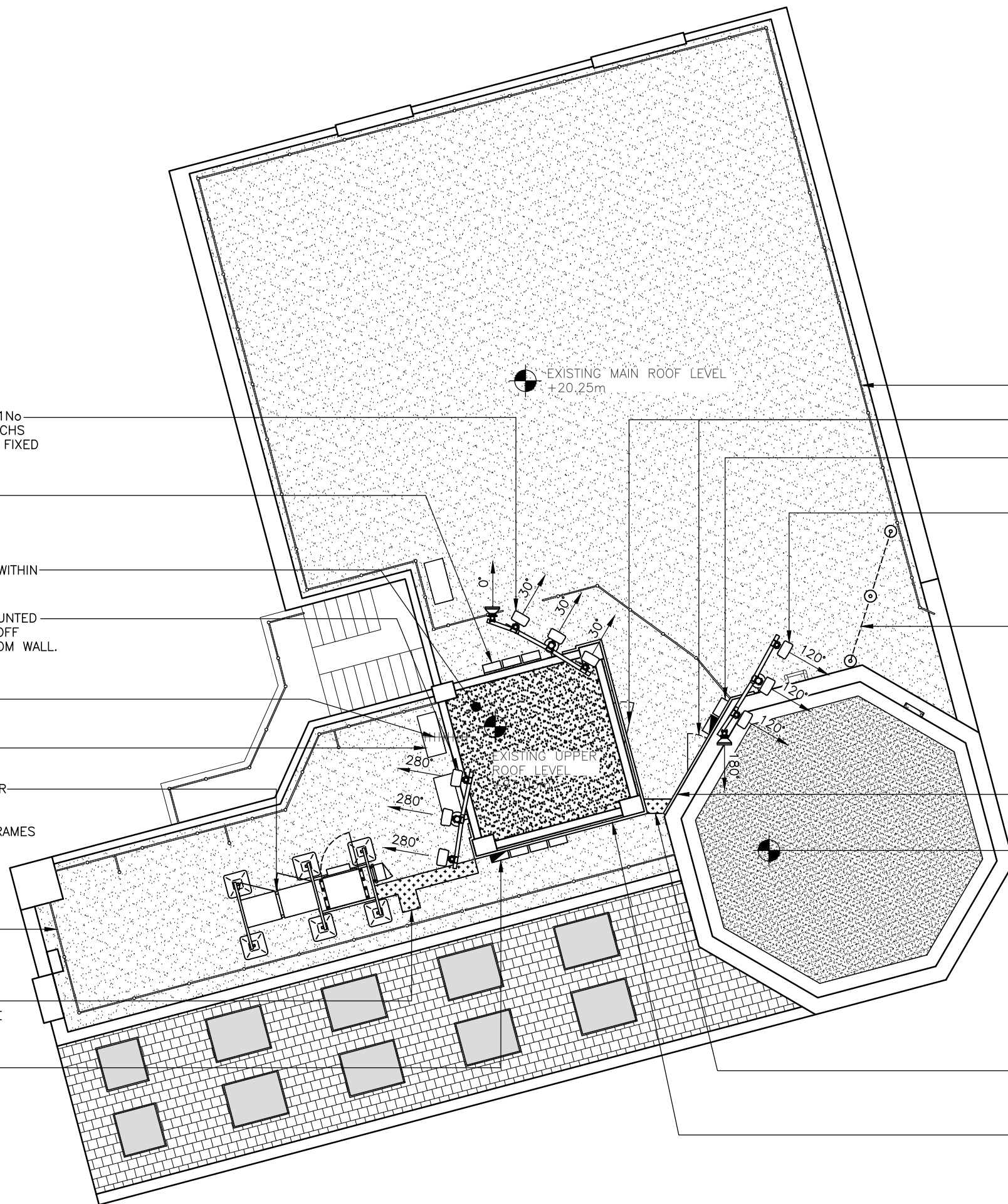
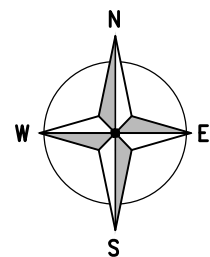
ORIGINAL SCALE AT A3 - 1:100 ALL DIMENSIONS IN MILLIMETRES



Drawn: SPD	Date: 30.03.16	Checked: DS	Date: 30.03.16	E
---------------	-------------------	----------------	-------------------	---







NOTE:  
PROPOSED RELOCATION OF  
EXISTING TV AERIAL (EXACT  
LOCATION TO BE CONFIRMED  
AT PRE START)

PROPOSED 3No. ANTENNAS & 1No  
300Ø DISH MOUNTED ON NEW CHS  
POLE & STAND OFF BRACKETS FIXED  
TO PLANT ROOM WALL.

PROPOSED 3No. RRUs ON  
UNISTRUT FIXED TO WALL

PROPOSED ELECTRICAL METER WITHIN  
EXISTING LIFT MOTOR ROOM

PROPOSED 3No. ANTENNAS MOUNTED  
ON NEW CHS POLE & STAND OFF  
BRACKETS FIXED TO PLANT ROOM WALL.

FUTURE RELOCATION OF  
EXISTING TV ARIAL

EXISTING OUTDOOR AC UNITS

PROPOSED 2No. FLEXI OUTDOOR  
RACKS, 1No. CSC CABINET &  
1No. AC DB ON DC485-T5  
NON-PENETRATING SUPPORT FRAMES

EXISTING FIXED HANDRAIL

PROPOSED 300 WIDE COVERED  
CABLE TRAY WITH HAZARD TAPE  
ON ROOF

PROPOSED 3No. RRUs & 3  
MODULE OD DC ENCLOSURE  
ON UNISTRUT FIXED TO WALL

EXISTING FIXED HANDRAIL

EXISTING ACCESS DOORS

PROPOSED 3No. RRUs & 3  
MODULE OD DC ENCLOSURE  
ON UNISTRUT FIXED TO WALL

PROPOSED 3No. ANTENNAS &  
1No 300Ø DISH MOUNTED ON  
NEW CHS POLE & STAND OFF  
BRACKETS FIXED TO WALL.

PROPOSED DEMARCATION  
CHAIN & SIGNAGE

PROPOSED 300 WIDE WALL  
MOUNTED CABLE TRAY

EXISTING UPPER ROOF LEVEL  
+22.55m

PROPOSED 300 WIDE COVERED  
CABLE TRAY WITH HAZARD TAPE  
ON ROOF

PROPOSED 300 WIDE WALL  
MOUNTED CABLE TRAY

Notes:

1 ALL DIMENSIONS ARE IN MM UNLESS NOTED OTHERWISE

2 DRAWING TO SCALE WHEN PRINTED AT A3

N.G.R	E: 531343	N: 181756
CONCESSION REQUIRED		NO
NOTES:		
C	GRP removed/new antenna arrangement	LK SGF 27.01.17
B	1No CSC cabinet removed	SPD DS 18.08.16
A	Issued for Approval	SPD DS 30.03.16
REV	MODIFICATION	BY CH DATE

CLARKEtelecom

Unit E, Madison Place, Northampton Road,  
Manchester, M40 5AG  
Tel: 0161 785 4500  
Fax: 0161 785 4501  
Web: www.clarke-telecom.com

vodafone

CTIL - BEACON

Cell Name		Opt.
88-90 HATTON GARDEN		F
Cell ID No		
CTIL	TEF	VF
148027	072476	86115
Site Address / Contact Details		
88-90 HATTON GARDEN LONDON EC1N 8PN		

Drawing Title:

PROPOSED SITE PLAN

Purpose of issue:	PLANNING	Dwg Rev:
Drawing Number:	201	C
Surveyed By:	Original Sheet Size:	Pack Issue:
MS	A3	
Drawn:	Date:	Checked:
SPD	30.03.16	DS
		Date:
		30.03.16
		E

The drawings comply with TEF & Vodafone Standard ICNIRP guidelines.  
Designed in accordance with CTIL document: SDN0008

PROPOSED SITE PLAN  
(1:100)

EXISTING UPPER ROOF LEVEL  
+23.05m AGL

EXISTING PARAPET LEVEL  
+20.67m AGL

EXISTING MAIN ROOF LEVEL  
+20.25m AGL

EXISTING PARAPET LEVEL  
+22.95m AGL

EXISTING UPPER ROOF LEVEL  
+22.55m AGL

G.L.

EXISTING SOUTH ELEVATION  
(1:125)

The drawings comply with TEF & Vodafone Standard ICNIRP guidelines.  
Designed in accordance with CTIL document: SDN0008

Notes:  
1 ALL DIMENSIONS ARE IN MM UNLESS NOTED OTHERWISE  
2 DRAWING TO SCALE WHEN PRINTED AT A3

N.G.R | E: 531343 N: 181756

CONCESSION REQUIRED | NO

NOTES:

A	Added Existing Elevation	SPD	DS	28.04.16
REV	MODIFICATION	BY	CH	DATE

CLARKE  
telecom

Unit E, Madison Place, Northampton Road,  
Manchester, M40 5AG  
Tel: 0161 785 4500  
Fax: 0161 785 4501  
Web: www.clarke-telecom.com

  
vodafone

CTIL - BEACON

Cell Name	Opt.
88-90 HATTON GARDEN	F

Cell ID No		
CTIL	TEF	VF
148027	072476	86115

Site Address / Contact Details

88-90 HATTON GARDEN  
LONDON  
EC1N 8PN

Drawing Title: EXISTING SOUTH ELEVATION				
Purpose of issue: PLANNING				Dwg Rev: A
Drawing Number: 300				Pack Issue: E
Surveyed By: MS		Original Sheet Size: A3		
Drawn: SPD	Date: 30.03.16	Checked: DS	Date: 30.03.16	

PROPOSED 3No. ANTENNAS MOUNTED  
ON NEW CHS POLE & STAND OFF  
BRACKETS FIXED TO PLANT ROOM WALL.

PROPOSED 2No. FLEXI OUTDOOR RACKS, 1No.  
CSC CABINET & 1No. AC DB ON DC485-T5  
NON-PENETRATING SUPPORT FRAMES

TOP OF PROPOSED ANTENNAS  
+25.85m AGL

U/S OF PROPOSED ANTENNAS  
+24.45m AGL

U/S OF PROPOSED ANTENNAS  
+24.25m AGL

EXISTING UPPER ROOF LEVEL  
+23.05m AGL

EXISTING PARAPET LEVEL  
+20.67m AGL

EXISTING MAIN ROOF LEVEL  
+20.25m AGL

PROPOSED 3No. RRUs & 3  
MODULE OD DC ENCLOSURE  
ON UNISTRUT FIXED TO WALL

PROPOSED 300 WIDE WALL  
MOUNTED CABLE TRAY

PROPOSED ELECTRICAL METER WITHIN  
EXISTING LIFT MOTOR ROOM

PROPOSED 6No. ANTENNAS & 2No 300ø  
DISHES MOUNTED ON NEW CHS POLES &  
STAND OFF BRACKETS FIXED TO WALLS

TOP OF PROPOSED ANTENNAS  
+27.55m AGL

U/S OF PROPOSED ANTENNAS  
+26.15m AGL

U/S OF PROPOSED ANTENNAS  
+25.95m AGL

Ø PROPOSED DISH D1  
+24.40m AGL

Ø PROPOSED DISH D2  
+26.10m AGL

EXISTING PARAPET LEVEL  
+22.95m AGL

EXISTING UPPER ROOF LEVEL  
+22.55m AGL

G.L.

PROPOSED SOUTH ELEVATION  
(1:125)

Notes:

1 ALL DIMENSIONS ARE IN MM UNLESS NOTED OTHERWISE  
2 DRAWING TO SCALE WHEN PRINTED AT A3

N.G.R | E: 531343 N: 181756

CONCESSION REQUIRED

NO

NOTES:

D	GRP removed/new antenna arrangement	LK	SGF	27.01.17
C	1No CSC cabinet removed	SPD	DS	18.08.16
B	Antenna Height reduced	SPD	DS	18.07.16
A	Issued for Approval	SPD	DS	30.03.16

REV	MODIFICATION	BY	CH	DATE
-----	--------------	----	----	------

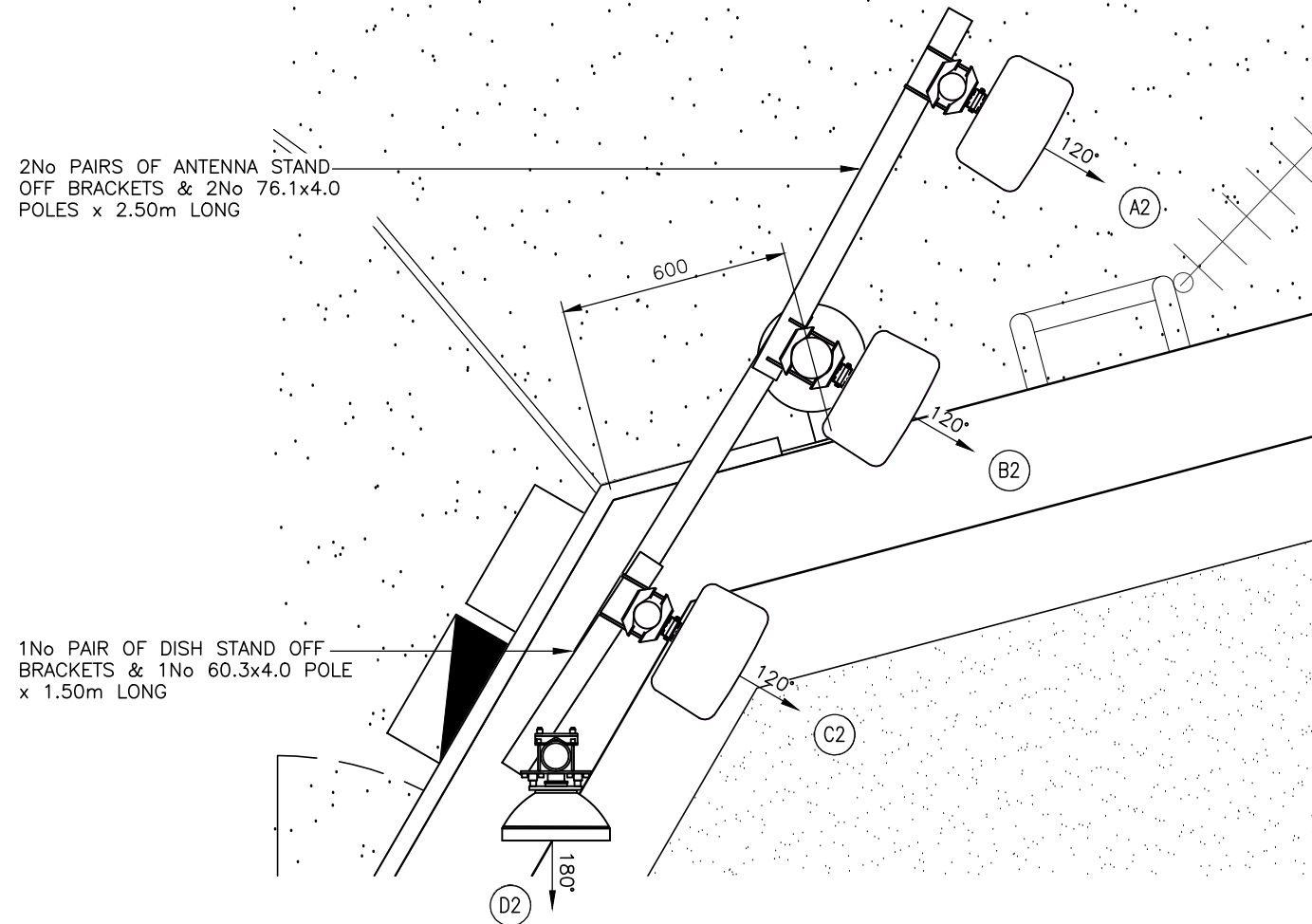
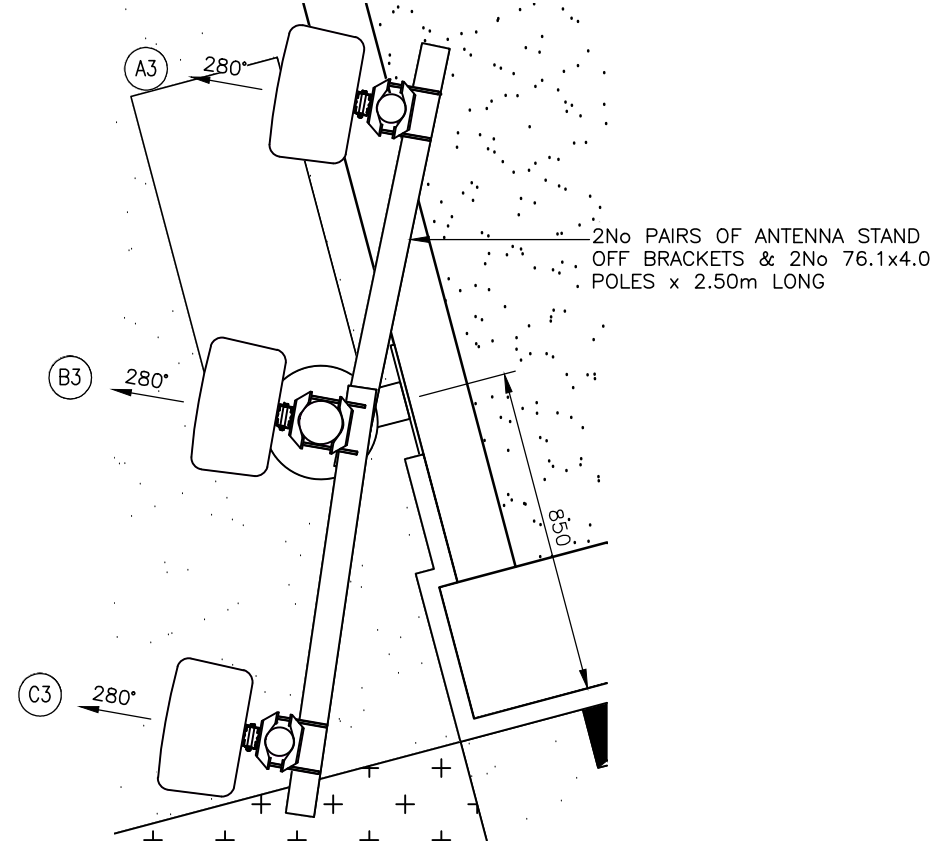
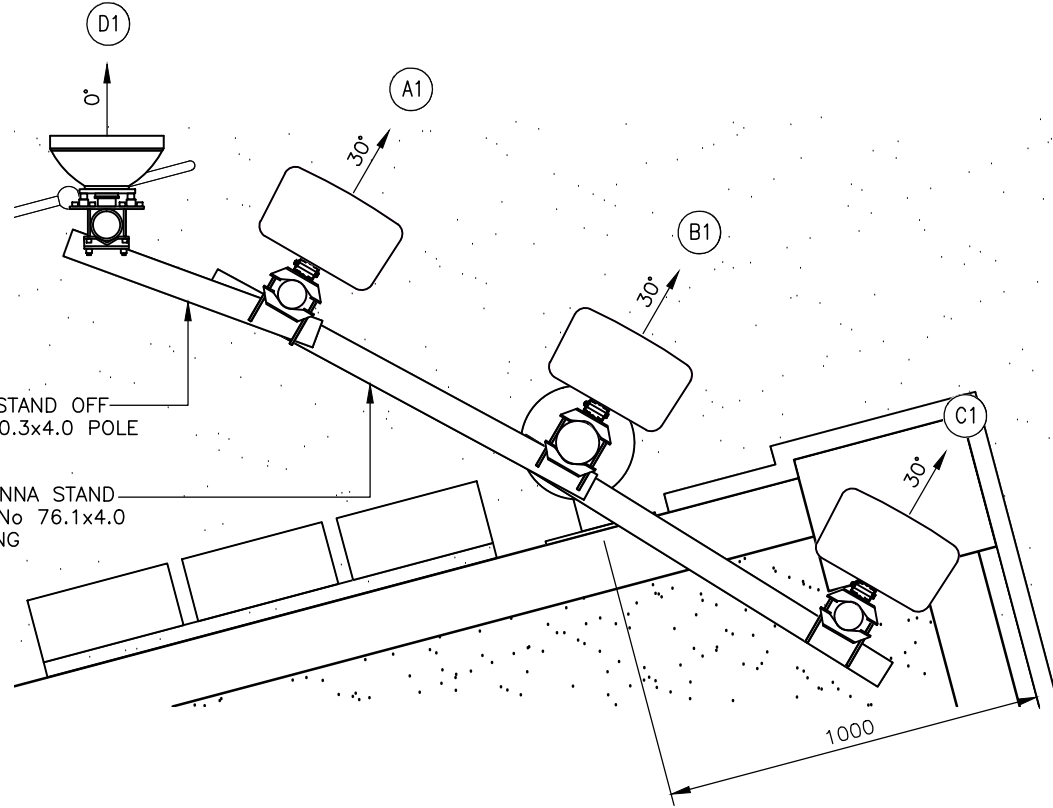
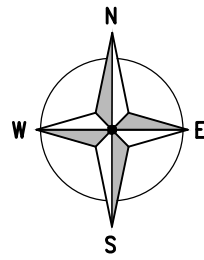


Cell Name	Opt.
88-90 HATTON GARDEN	F

Cell ID No		
CTIL	TEF	VF
148027	072476	86115

Site Address / Contact Details		
88-90 HATTON GARDEN LONDON EC1N 8PN		

Drawing Title: PROPOSED SOUTH ELEVATION			
Purpose of issue: PLANNING			Dwg Rev:
Drawing Number: 301			D
Surveyed By: MS		Original Sheet Size: A3	
Drawn: SPD	Date: 30.03.16	Checked: DS	Date: 30.03.16
			Pack Issue: E



PROPOSED VF/TEF ANTENNA PLAN  
(1:20)

The drawings comply with TEF & Vodafone Standard ICNIRP guidelines.  
Designed in accordance with CTIL document: SDN0008

Notes:  
1 ALL DIMENSIONS ARE IN MM UNLESS NOTED OTHERWISE  
2 DRAWING TO SCALE WHEN PRINTED AT A3

N.G.R | E: 531343 N: 181756  
CONCESSION REQUIRED | NO

B	GRP removed/new antenna arrangement	LK	SGF	27.01.17
A	Issued for Approval	SPD	DS	30.03.16
REV	MODIFICATION	BY	CH	DATE

**CLARKE**  
**telecom**  
Unit E, Madison Place, Northampton Road,  
Manchester, M40 5AG  
Tel: 0161 785 4500  
Fax: 0161 785 4501  
Web: www.clarke-telecom.com

**vodafone**  
CTIL - BEACON

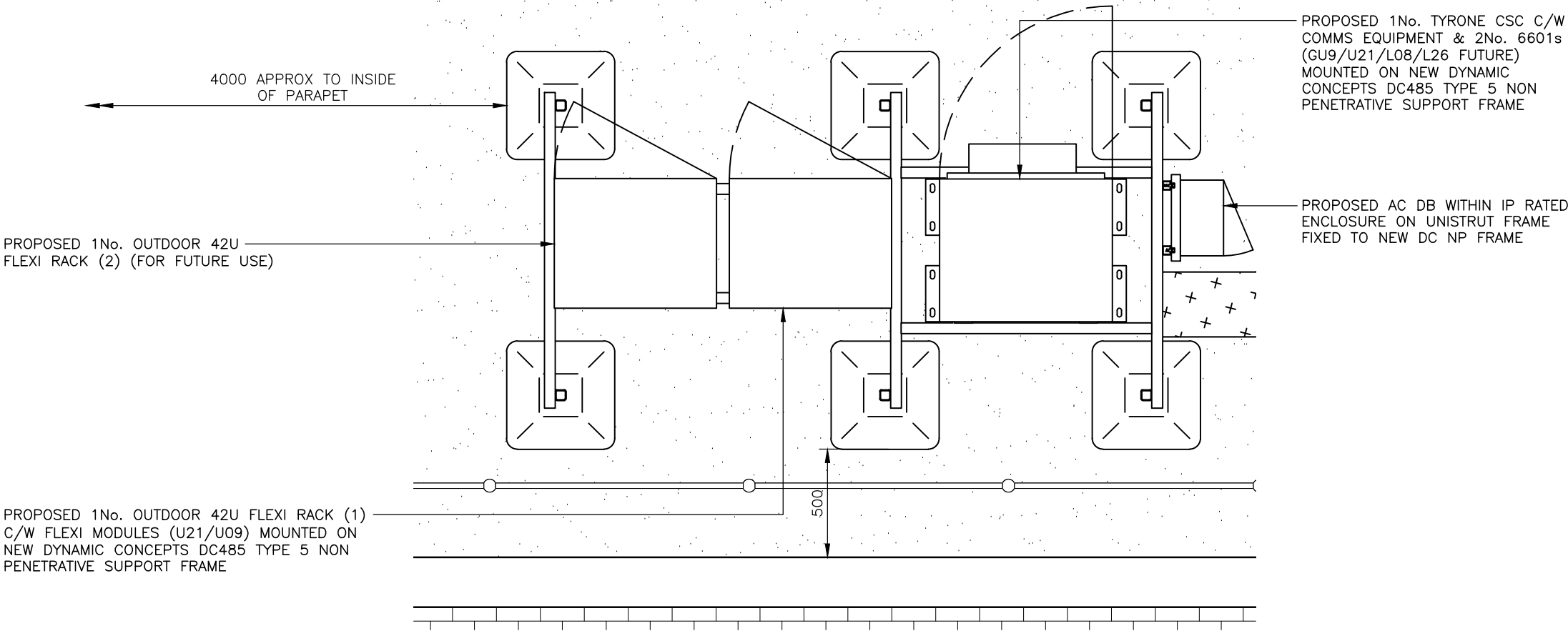
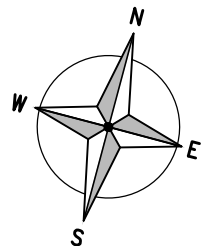
Cell Name			Opt.
88-90 HATTON GARDEN			F
Cell ID No			
CTIL	TEF	VF	
148027	072476	86115	

Site Address / Contact Details			
88-90 HATTON GARDEN LONDON EC1N 8PN			

Drawing Title: ANTENNA LAYOUT			
Purpose of issue: PLANNING			Dwg Rev:
Drawing Number: 400			B
Surveyed By: MS		Original Sheet Size: A3	
Drawn: SPD	Date: 30.03.16	Checked: DS	Date: 30.03.16
			Pack Issue: E



FOR SITE DESIGN DEPENDENCIES REFER TO DRAWING 502



EQUIPMENT LAYOUT  
(1:25)

The drawings comply with TEF & Vodafone Standard ICNIRP guidelines.  
Designed in accordance with CTIL document: SDN0008

Notes: 1 ALL DIMENSIONS ARE IN MM UNLESS NOTED OTHERWISE 2 DRAWING TO SCALE WHEN PRINTED AT A3			
N.G.R	E: 531343	N: 181756	
CONCESSION REQUIRED		NO	

REV	MODIFICATION	BY	CH	DATE
C	1No CSC cabinet removed	SPD	DS	18.08.16
B	Minor mods	SPD	DS	18.07.16
A	Issued for Approval	SPD	DS	30.03.16

Unit E, Madison Place, Northampton Road,  
Manchester, M40 5AG  
Tel: 0161 785 4500  
Fax: 0161 785 4501  
Web: www.clarke-telecom.com

CTIL - BEACON

Cell Name	Opt.
88-90 HATTON GARDEN	F

Cell ID No		
CTIL	TEF	VF
148027	072476	86115

Site Address / Contact Details		
88-90 HATTON GARDEN LONDON EC1N 8PN		

Drawing Title: EQUIPMENT LAYOUT			
Purpose of issue: PLANNING			Dwg Rev: C
Drawing Number: 401			Pack Issue: E
Surveyed By: MS		Original Sheet Size: A3	
Drawn: SPD	Date: 30.03.16	Checked: DS	Date: 30.03.16

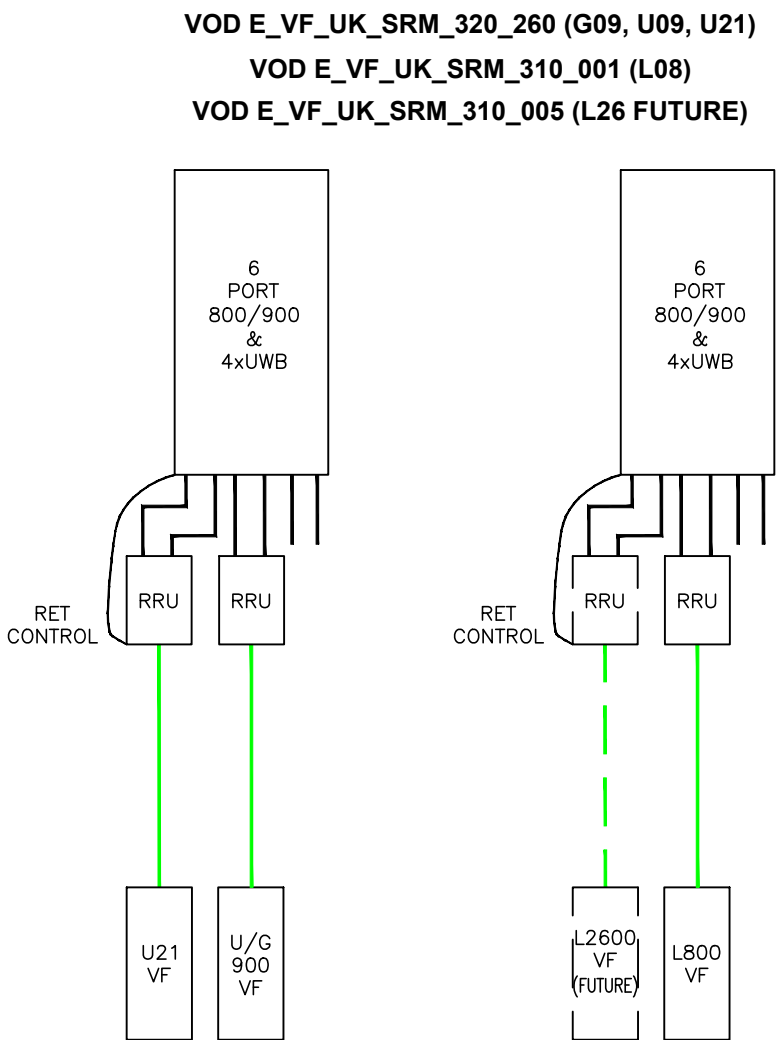
VOD_E_VF_UK_SRM_320_260 (GU9/U21), VOD_E_VF_UK_SRM_310_001 (L08) & VOD_E_VF_UK_SRM_310_005 (L26 FUTURE)																							LDG-M-E1b						
EXISTING & PROPOSED ANTENNA SCHEDULE (EXISTING EQUIPMENT SHOWN GREY)																													
PROPOSED & EXISTING ANTENNAS	OPERATOR	FUNCTION	FEEDER/DC/FIBRE									MHA's/RRU's/BIAS T's/JUMPERS/COMBINERS										ANTENNAS							
			LENGTH(m) & DIAMETER (SEE GUIDANCE NOTES BELOW)				TYPE (COAX OR DC/FIBRE)	FEEDERS QTY		DC/FIBRE QTY	DC/FIBRE LENGTH	MHA NSN QTY	MHA E'SSON QTY	RRU QTY	BIAS T QTY	RRU TO ANTENNA JUMPER LENGTH (TO BE WITHIN MAX LENGTH ALLOWED AS PER CTIL DESIGN SPEC)	MHA TO ANTENNA JUMPER LENGTH (m) - RTOPS & GFIELDS)	COMBINERS (HIGH LEVEL)	COMBINERS (LOW LEVEL IN CABINET, CABIN ETC)	ANT. REF.	ANTENNA MANUFACTURERS PART No.	BRG*	HEIGHT TO TOP (m)	HEIGHT TO U/S (m)	HEIGHT TO C/L (m)	LOCATION (POLE MOUNTED, HEADFRAME, WITHIN SHROUD ETC)	STATUS	COMMENTS	
			MF1	MF(J1)	MF(J2)	TOTAL		EX'TNG	PROP																				
SEC 1	P	VF	1GU9	—	—	—	—	DC/FIBRE	—	—	1	23m	—	—	1	—	3.0m	—	—	—	A1a	COMMSCOPE RVVPX306.11R	30°	25.85	24.25	25.05	STAND OFF BRACKET	NEW	—
		VF	1U21	—	—	—	—	DC/FIBRE	—	—	1	23m	—	—	1	—	3.0m	—	—	—	A1b								—
		SPARE	—	—	—	—	—	—	—	—	—	—	—	—	—	—	—	—	—	A1c	—								
	P	VF/TEF	1L08	—	—	—	—	DC/FIBRE	—	—	1	23m	—	—	1	—	3.0m	—	—	—	B1a	COMMSCOPE RVVPX306.11R	30°	25.85	24.25	25.05	POLE MOUNT	NEW	—
		FUTURE (VF)	1L26	—	—	—	—	—	—	—	—	—	—	—	—	—	—	—	—	B1b	—								
		SPARE	—	—	—	—	—	—	—	—	—	—	—	—	—	—	—	—	—	—	B1c								—
	P	TEF	1U09	78=23	—	—	23	COAX	—	2	—	—	—	—	—	—	—	—	—	C1a	COMMSCOPE RVVPX305.10R3 (Q-CODE 65BUU14C6)	30°	25.85	24.45	25.15	STAND OFF BRACKET	NEW	—	
		TEF	1U21	78=23	—	—	23	COAX	—	2	—	—	1	—	—	—	—	—	—	C1b								—	
		SPARE	—	—	—	—	—	—	—	—	—	—	—	—	—	—	—	—	—	—								C1c	—
SEC 2	P	VF	2GU9	—	—	—	—	DC/FIBRE	—	—	1	21m	—	—	1	—	5.0m	—	—	—	A2a	COMMSCOPE RVVPX306.11R	120°	27.55	25.95	26.75	STAND OFF BRACKET	NEW	—
		VF	2U21	—	—	—	—	DC/FIBRE	—	—	1	21m	—	—	1	—	5.0m	—	—	—	A2b								—
		SPARE	—	—	—	—	—	—	—	—	—	—	—	—	—	—	—	—	—	A2c	—								
	P	VF/TEF	2L08	—	—	—	—	DC/FIBRE	—	—	1	21m	—	—	1	—	5.0m	—	—	—	B2a	COMMSCOPE RVVPX306.11R	120°	27.55	25.95	26.75	POLE MOUNT	NEW	—
		FUTURE (VF)	2L26	—	—	—	—	—	—	—	—	—	—	—	—	—	—	—	—	B2b	—								
		SPARE	—	—	—	—	—	—	—	—	—	—	—	—	—	—	—	—	—	B2c	—								
	P	TEF	2U09	78=21	—	—	21	COAX	—	2	—	—	—	—	—	—	—	—	—	C2a	COMMSCOPE RVVPX305.10R3 (Q-CODE 65BUU14C6)	120°	27.55	26.15	26.85	STAND OFF BRACKET	NEW	—	
		TEF	2U21	78=21	—	—	21	COAX	—	2	—	—	1	—	—	—	—	—	—	C2b								—	
		SPARE	—	—	—	—	—	—	—	—	—	—	—	—	—	—	—	—	—	—								C2c	—
SEC 3	P	VF	3GU9	—	—	—	—	DC/FIBRE	—	—	1	15m	—	—	1	—	3.0m	—	—	—	A3a	COMMSCOPE RVVPX306.11R	280°	25.85	24.25	25.05	STAND OFF BRACKET	NEW	—
		VF	3U21	—	—	—	—	DC/FIBRE	—	—	1	15m	—	—	1	—	3.0m	—	—	—	A3b								—
		SPARE	—	—	—	—	—	—	—	—	—	—	—	—	—	—	—	—	—	A3c	—								
	P	VF/TEF	3L08	—	—	—	—	DC/FIBRE	—	—	1	15m	—	—	1	—	3.0m	—	—	—	B3a	COMMSCOPE RVVPX306.11R	280°	25.85	24.25	25.05	POLE MOUNT	NEW	—
		FUTURE (VF)	3L26	—	—	—	—	—	—	—	—	—	—	—	—	—	—	—	—	B3b	—								
		SPARE	—	—	—	—	—	—	—	—	—	—	—	—	—	—	—	—	—	B3c	—								
	P	TEF	3U09	78=15	—	—	15	COAX	—	2	—	—	—	—	—	—	—	—	—	C3a	COMMSCOPE RVVPX305.10R3 (Q-CODE 65BUU14C6)	280°	25.85	24.45	25.15	STAND OFF BRACKET	NEW	—	
		TEF	3U21	78=15	—	—	15	COAX	—	2	—	—	1	—	—	—	—	—	—	C3b								—	
		SPARE	—	—	—	—	—	—	—	—	—	—	—	—	—	—	—	—	—	C3c								—	

PROPOSED DISH KEY						
STATUS	OPERATOR	DISH REF	DISH DIA	BEARING	HEIGHT TO CENTRE (AGL)	LINK No.
PROPOSED	VF	D1	300ø	0°	24.40m	—
PROPOSED	VF	D2	300ø	180°	26.10m	—

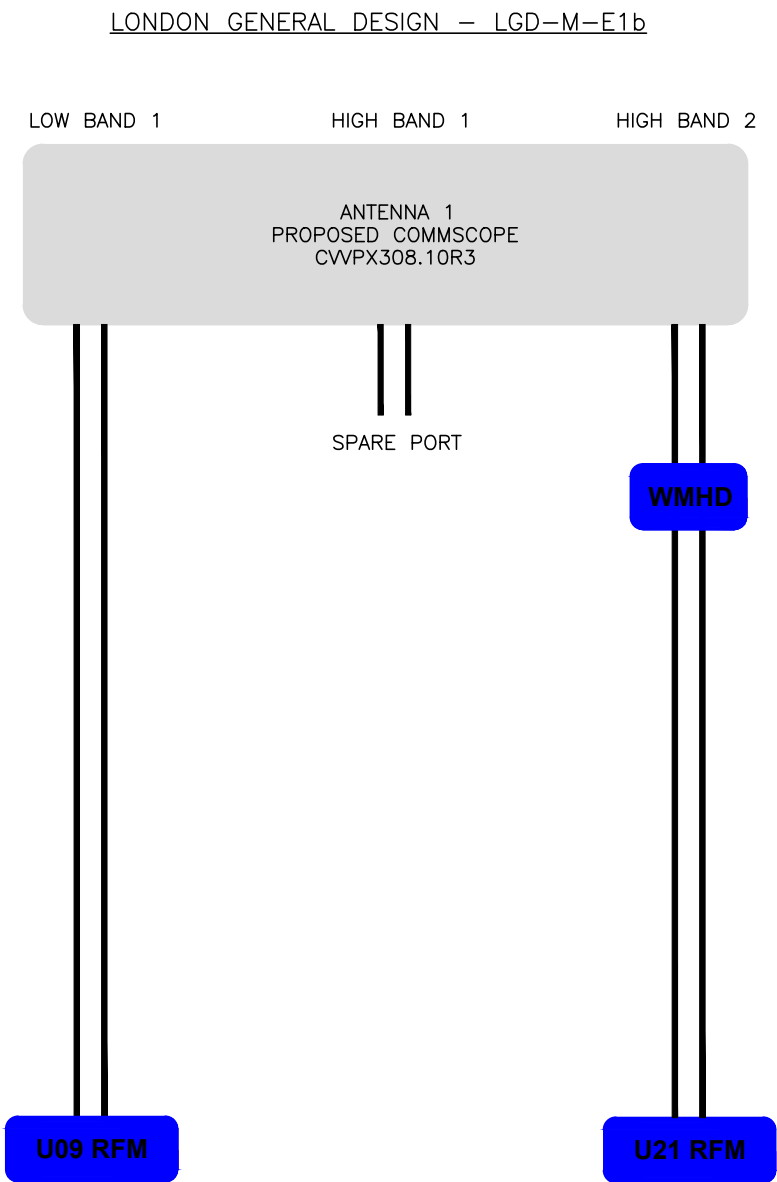
Cell Name		Opt.
88-90 HATTON GARDEN		F
Cell ID No		
CTIL	TEF	VF
148027	072476	86115
Site Address / Contact Details		
88-90 HATTON GARDEN LONDON EC1N 8PN		
Drawing Title: ANTENNA SCHEDULE		
Purpose of issue: PLANNING		Dwg Rev:
Drawing Number: 500		B
Surveyed By: MS	Original Sheet Size: A3	Pack Issue:
Drawn: SPD	Date: 30.03.16	Checked: DS
	Date: 30.03.16	E

ANTENNA REFERENCE KEY		FUNCTION KEY		STATUS KEY		OPERATOR KEY		FEEDER LENGTH & DIAMETER GUIDANCE NOTES									
A=	ANTENNA GROUP (A-Z)	1=	SECTOR (2,3 etc)	NEW =	NEW ONTO SITE	VF =	VODAFONE	TOTAL DISTANCE MEASURED FROM MHA TO BTS CABINET. NOTE: FOR STREET POLES THE TOTAL IS TO INCLUDE THE 2/3 FEEDER (TEF) & 1/2 FEEDER (VFU21) PRE-RIGGED IN THE POLE. IF FEEDER DIAMETER VARIES THE LENGTHS ARE TO BE ITEMISED SEQUENTIALLY IN THE COLUMNS FROM THE ANTENNA MHA TO THE BTS AS FOLLOWS: MAIN FEEDER; MAIN FEEDER JUMPER 1; MAIN FEEDER JUMPER 2; TOTAL LENGTH.									
1=	CELL No. (1, 2, 3)	U=	UMTS (G=GSM) (L=LTE)	EXISTING =	ON SITE AND NOT BEING MOVED	TEF =	TELEFONICA UK										
b=	UNIQUE BAND REFERENCE	21=	2100 BAND (09=0900,18=1800)	RE-USE =	ON SITE BUT BEING MOVED												
DISH	Dish (1-13)			REMOVE =	REMOVED FROM SITE												





VF  
RF SYSTEMS SCHEMATIC  
NTS



TEF  
RF SYSTEMS SCHEMATIC  
NTS

Notes:

1 ALL DIMENSIONS ARE IN MM UNLESS NOTED OTHERWISE

2 DRAWING TO SCALE WHEN PRINTED AT A3

N.G.R

E: 531343

N: 181756

CONCESSION REQUIRED

NO

NOTES:

B	Minor mods	SPD	DS	18.07.16
A	Issued for Approval	SPD	DS	30.03.16
REV	MODIFICATION	BY	CH	DATE

CLARKE

telecom

Unit E, Madison Place, Northampton Road,  
Manchester, M40 5AG  
Tel: 0161 785 4500  
Fax: 0161 785 4501  
Web: www.clarke-telecom.com

vodafone

CTIL - BEACON

Cell Name			Opt.
88-90 HATTON GARDEN			F
Cell ID No			
CTIL	TEF	VF	
148027	072476	86115	
Site Address / Contact Details			
88-90 HATTON GARDEN LONDON EC1N 8PN			

Drawing Title:

R.F. SYSTEM SCHEMATIC

Purpose of issue:

PLANNING

Dwg Rev:

Drawing Number:

501

B

Surveyed By:

MS

Original Sheet Size:

A3

Pack Issue:

Drawn:

SPD

Date:

30.03.16

Checked:

DS

Date:

30.03.16

E

SUPPORT STRUCTURE KEY						
EXISTING/ PROPOSED	HEIGHT	MANUFACTURER	TYPE	COLOUR/ FINISH	STATUS	COMMENTS
PROPOSED	N/A	DYNAMIC CONCEPTS	DC485 T5 G02 NON PENETRATIVE SUPPORT FRAME	GALVANISED	NEW	–
PROPOSED	–	–	1No. 139.7/114.3ø SPLICED CHS POLES	GALVANISED	NEW	6.20m 0/ALL LENGTH
PROPOSED	–	–	2No. 114.3øx6.3 SPLICED CHS POLES	GALVANISED	NEW	5.50m 0/ALL LENGTH
PROPOSED	N/A	–	STAND OFF BRACKETS	GALVANISED	NEW	6No PAIRS FOR ANTENNAS
PROPOSED	N/A	–	STAND OFF BRACKETS	GALVANISED	NEW	2No PAIRS FOR DISHES
PROPOSED	–	–	6No. 76.1ø CHS POLES	GALVANISED	NEW	6No x 2.50m LONG FOR ANTENNAS
PROPOSED	–	–	2No. 60.3ø CHS POLES	GALVANISED	NEW	2No x 1.50m LONG FOR DISHES

EQUIPMENT KEY							
EXISTING/ PROPOSED	OPERATOR	MANUFACTURER	TYPE	SIZE (WxDxH)	COLOUR	STATUS	COMMENTS
PROPOSED	TEF	NOKIA	42U OD FLEXI RACK (1)	600x750x1975	GREY (RAL 7035)	NEW	U21/U09
PROPOSED	TEF	NOKIA	42U OD FLEXI RACK (2)	600x750x1975	GREY (RAL 7035)	–	FUTURE USE
PROPOSED	VF	TYRONE	CSC CABINET	800x660x1770	GREY (RAL 7035)	NEW	U21/GU9/L08
PROPOSED	VF	ERICSSON	3No. RRUS (800)	383x169X636	GREY	NEW	–
PROPOSED	VF	ERICSSON	3No. RRUS (900)	383x169X636	GREY	NEW	–
PROPOSED	VF	ERICSSON	3No. RRUS (2100)	383x169X636	GREY	NEW	–
PROPOSED	VF	ERICSSON	3No. RRUS (2600)	383x169X636	GREY	–	FUTURE

POWER SUPPLY/ SOURCE							
EXISTING/ PROPOSED	OPERATOR	MANUFACTURER	TYPE	SIZE (mm)	COLOUR	STATUS	COMMENTS
PROPOSED	VF	–	AC DB	450x350x200	GREY (RAL 7035)	NEW	L/L SUPPLY (WITHIN IP RATED ENCLOSURE)
PROPOSED	VF	TYRONE	CSC CABINET	800x660x1770	GREY (RAL 7035)	NEW	–
PROPOSED	TEF	ICD	OD DC ENCLOSURE	450x350x200	GREY (RAL 7035)	NEW	(WITHIN IP RATED ENCLOSURE)

TRANSMISSION ENCLOSURE						
EXISTING/PROPOSED	ENCLOSURE	TRANSMISSION SOLUTION MICROWAVE ONLY/FIBRE/ONLY (WITH PROVIDER NAME)/MICROWAVE+ FIBRE (WITH PROVIDER NAME)	U SPACE AVAILABLE	CURRENT TRANSMISSION KIT LOCATION	PROPOSED TRANSMISSION KIT LOCATION	COMMENTS
PROPOSED	CSC	MICROWAVE+FIBRE (SUPPLIER TBC)	7	–	X	–

Notes:  
1 ALL DIMENSIONS ARE IN MM UNLESS NOTED OTHERWISE  
2 DRAWING TO SCALE WHEN PRINTED AT A3

N.G.R | E: 531343 N: 181756

CONCESSION REQUIRED | NO

DEPENDENCIES	
CHERRY PICKER SURVEY	NO
STAT SEARCH	NO
TRIAL DIG	NO
GEOTECH	NO
GDC	NO
BOLT PULL–OUT TEST	NO
STRUCTURAL CALCULATIONS	✓
BUILDING REGULATIONS	NO
ELECTRICAL LOAD TEST	NO
REC SERVICE ALTERATION	NO
COMMS SERVICE ALTERATION	NO
ASBESTOS SURVEY	✓
ANTENNA TESTING	NO
COOLING CALCULATIONS	NO

D	GRP removed/new antenna arrangement	LK	SGF	27.01.17
C	1No CSC cabinet removed	SPD	DS	18.08.16
B	Minor mods	SPD	DS	18.07.16
A	Issued for Approval	SPD	DS	30.03.16
REV	MODIFICATION	BY	CH	DATE



Unit E, Madison Place, Northampton Road,  
Manchester, M40 5AG  
Tel: 0161 785 4500  
Fax: 0161 785 4501  
Web: www.clarke-telecom.com



CTIL - BEACON

Cell Name		Opt.
88–90 HATTON GARDEN		F
Cell ID No		
CTIL	TEF	VF
148027	072476	86115
Site Address / Contact Details		
88–90 HATTON GARDEN LONDON EC1N 8PN		
Drawing Title: EQUIPMENT SCHEDULE		
Purpose of issue: PLANNING		Dwg Rev:
Drawing Number: 502		D
Surveyed By: MS		Original Sheet Size: A3
Drawn: SPD	Date: 30.03.16	Checked: DS
Date: 30.03.16	Date: 30.03.16	Pack Issue: E