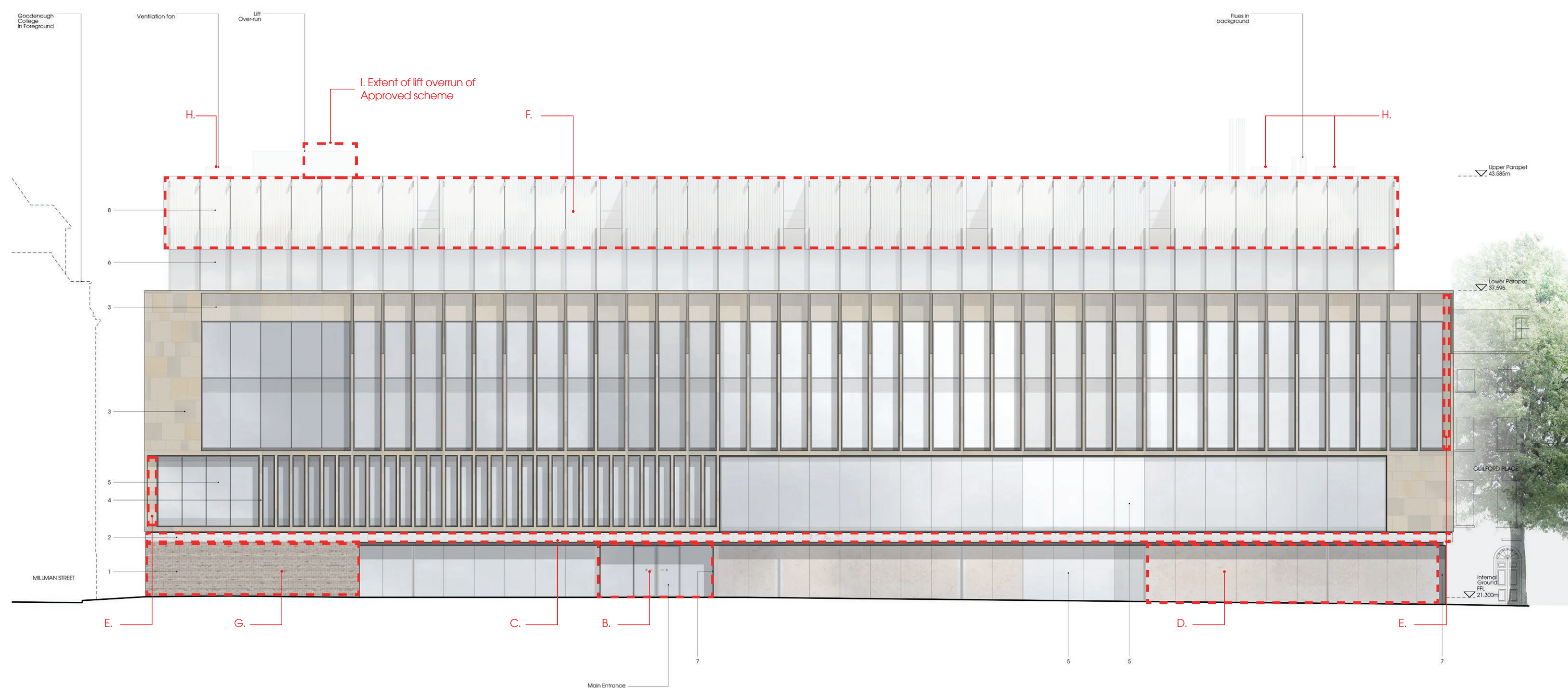


3.0 General Amendments



Proposed Design Changes - North elevation

- B. Main entrance : 1 set of double sliding doors instead of 2
- C. GRC in lieu of precast cladding to first floor fascia
- D. Internal brick wall within the ground floor laboratory space replaced by an alternative lining (finish and material under review)
- E. Technical development of terracotta cladding to NE and NW corners.
- F. GMP glazing details
- G. Stretcher bond in lieu of English bond brickwork on ground floor
- H. Ventilation fans added on roof level
- I. Lift overrun dimensions changed

- Key:
- 1. External facing brickwork
 - 2. GRC fascia
 - 3. Terracotta cladding
 - 4. Terracotta fins
 - 5. Curtain walling
 - 6. Curtain walling with projecting mullions
 - 7. Metal cladding
 - 8. Glass rainscreen

3.0 General Amendments



Approved Design - East elevation

- Key:
- 1. External facing brickwork
 - 2. Precast concrete fascia
 - 3. Terracotta cladding
 - 4. Terracotta fins
 - 5. Flush curtain walling
 - 6. Glazing flush with brickwork
 - 7. Recessed metal framed glazing
 - 8. Metal cladding
 - 9. Metal cladding with projecting metal fins
 - 10. Metal louvres

3.0 General Amendments



Proposed Design Changes - East elevation

- B. The doors into the loading bay have changed from sliding to bifold because of technical reasons.
- C. GRC in lieu of precast cladding to first floor fascia
- D. Stretcher bond in lieu of English bond brickwork on ground floor
- E. Technical development of terracotta cladding to NE corner
- F. Main atrium rooflight raised to incorporate smoke extract louvres
- G. Ventilation fans added on roof level
- H. Lift overrun dimensions changed

- Key:

1. External facing brickwork
2. GRC fascia
3. Terracotta cladding
4. Terracotta fins
5. Curtain walling
6. Glazing flush with brickwork
7. Recessed metal framed glazing
8. Metal cladding
9. Metal cladding with projecting metal fins
10. Metal louvres