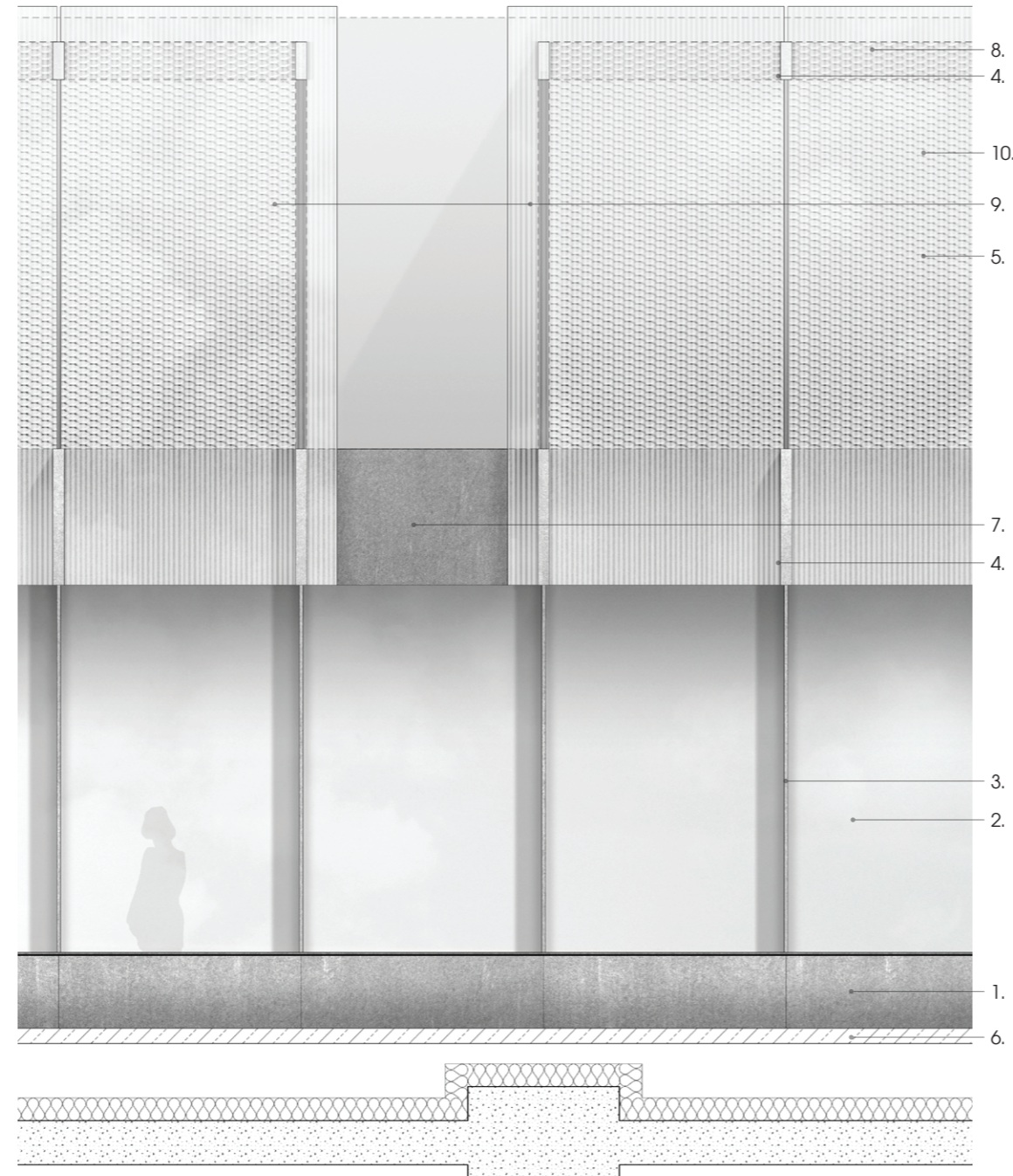
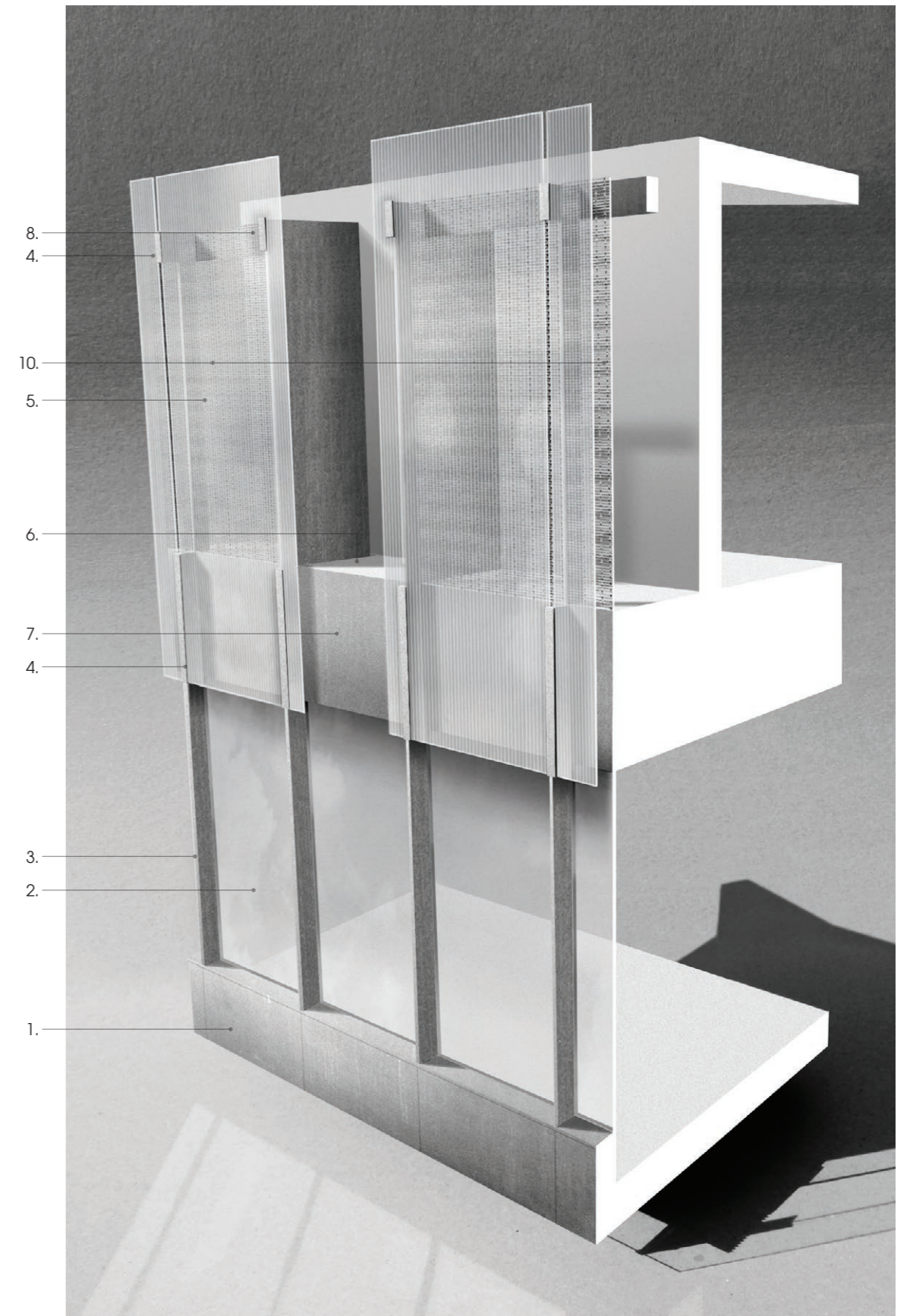


## 2.0 Design of Fourth and Fifth floor façades



### Key

1. Metal cladding to upstands
2. Curtain walling
3. Projecting mullions extend to form point fixings to glass rainscreen
4. Point fixings for glass rainscreen
5. Glass rainscreen
6. External paving to roof
7. Metal cladding to spandrel.
8. Steel structure in background.
9. Full height metal cladding to reveals, behind glass rainscreen
10. Metal mesh layer behind glass rainscreen

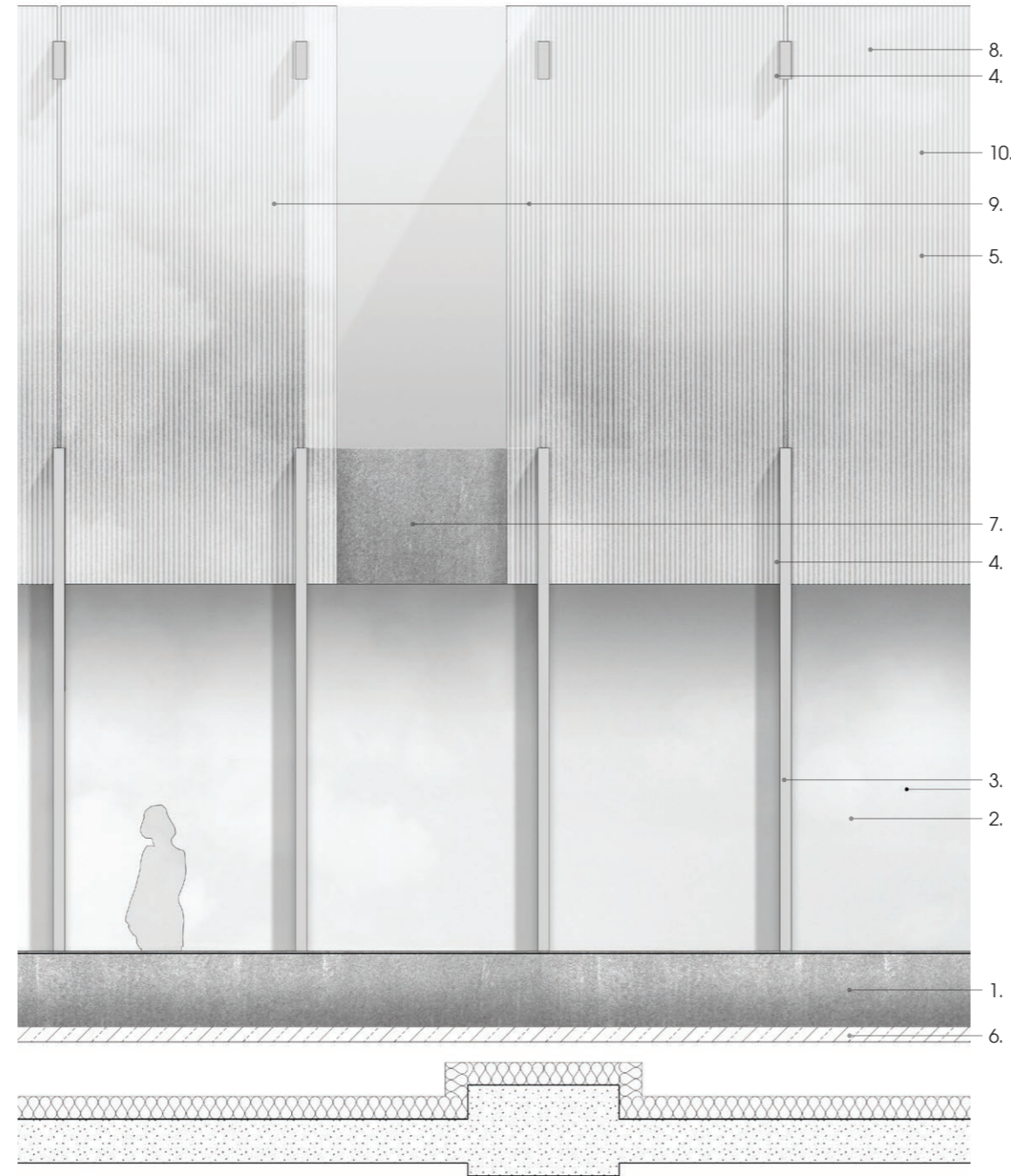


Approved Design — North Elevation GMP Façade Study, partial elevation

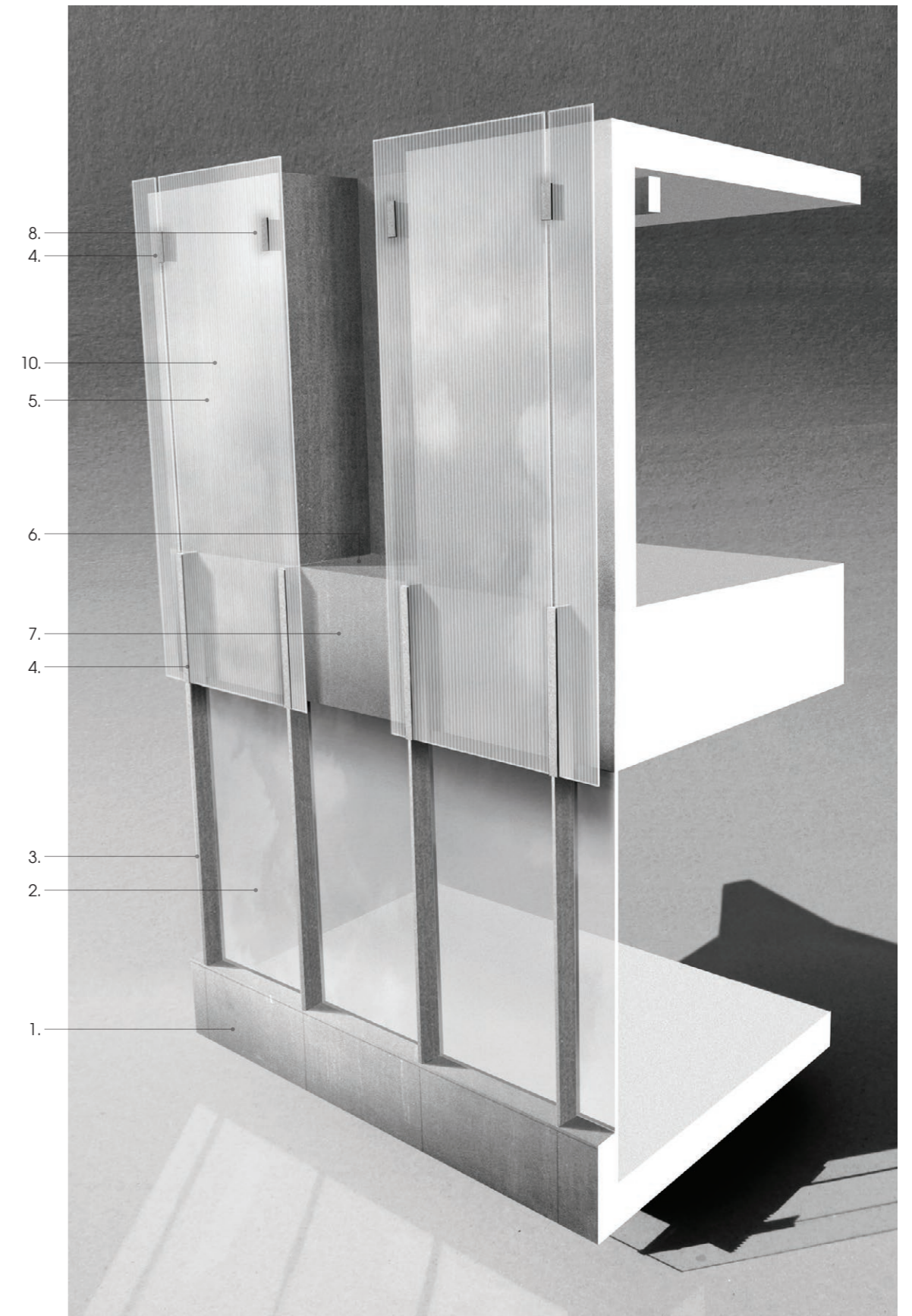
Approved Design — North Elevation GMP Façade Study

## 2.0 Design of Fourth and Fifth floor façades

Overall, the design intent for the GMP volume will be the same as the approved scheme. On the fourth floor the setback glazing to the occupied research areas will be framed by deep metal mullions. As in the original design, the glass screen on the fifth floor will overlap the fourth floor glazing with the resulting overhang creating a glass 'veiled' façade on the top (fifth) floor.



Proposed Design — North Elevation GMP Façade Study, partial elevation



Proposed Design — North Elevation GMP Façade Study

### 3.0 General Amendments

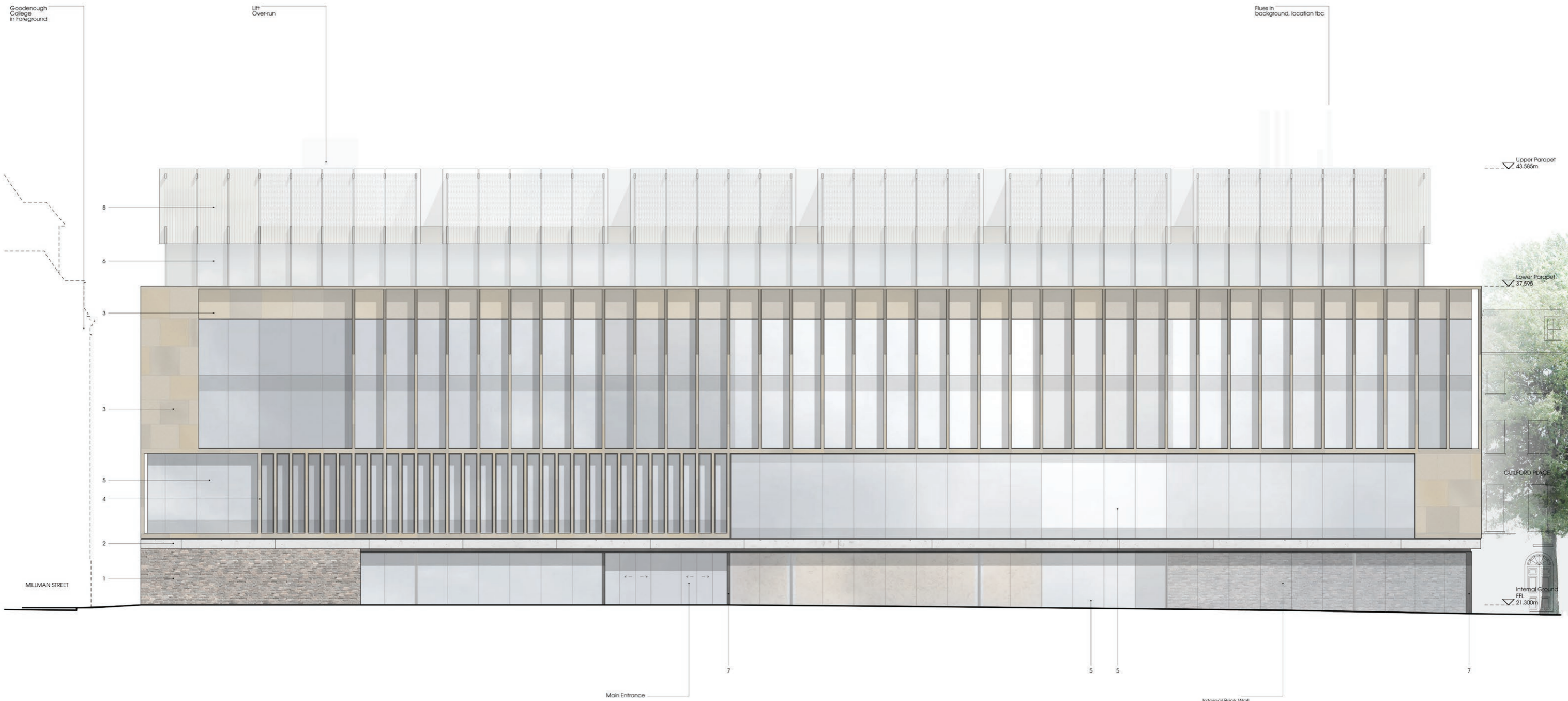
#### Summary of key changes to the Approved elevations:

The following is a list of the general changes that have been incorporated in the design:

- The use of GRC cladding in lieu of precast at high level ground floor. Colour/texture will be matched with original intentions.
- It is proposed that the ground floor brickwork is to be in stretcher bond, not English bond.
- The building has been coordinated to brick dimensions and therefore there are minor adjustment to glazing sizes.
- The lift overrun on Core 1 (on the northwest corner of the building) has increased in width/length, but reduced in height.
- 4no. ventilation fans have been added to the roof, projecting 475mm above the roof level. These will not be visible from street level.
- Internal brickwork in the laboratory has been omitted
- Amendments to areas of ventilation grilles to accommodate ventilation requirements
- Minor amendments to glazing

Further, particular changes to each elevation are highlighted on the proposed drawings in the following pages.

### 3.0 General Amendments



Approved Design - North elevation

Key:

1. External facing brickwork
2. Precast concrete fascia
3. Terracotta cladding
4. Terracotta fins
5. Flush curtain walling
6. Curtain walling with projecting mullions
7. Metal cladding
8. Glass rainscreen