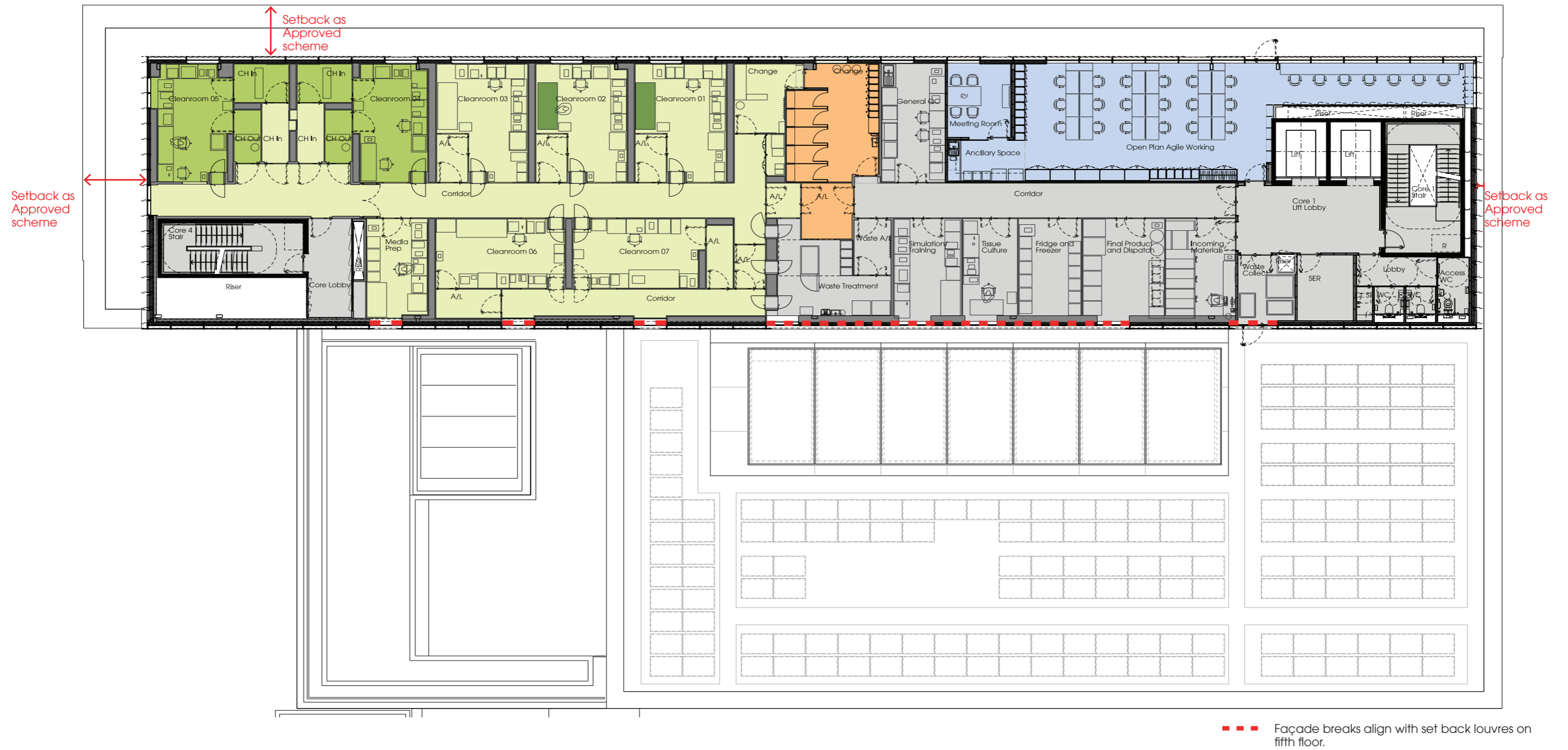


2.0 Design of Fourth and Fifth floor façades

On the south elevation, due to detailed design development of the plant areas, it is proposed to group the fifth floor intake louvres in one uniform bank. This stretch of louvres will align with the facade break on the fourth floor, providing clear glazing into technical spaces. Additional facade breaks will be positioned in a regular rhythm, spanning both fourth and fifth floor, in a similar manner to those in the consented scheme. As on the north elevation, the louvres here will have a frameless appearance and will match the design elsewhere.



Proposed Fourth Floor Plan