

Great Ormond Street
Hospital for Children
NHS Foundation Trust



UCL INSTITUTE OF CHILD HEALTH

Non Material Amendment Application DRAFT
Stanton Williams
31 January 2017

Zayed Centre for Research
into Rare Disease in Children

Contents

1.0 Introduction

2.0 Design of Fourth and Fifth floor façades

3.0 General amendments

4.0 Visualisations

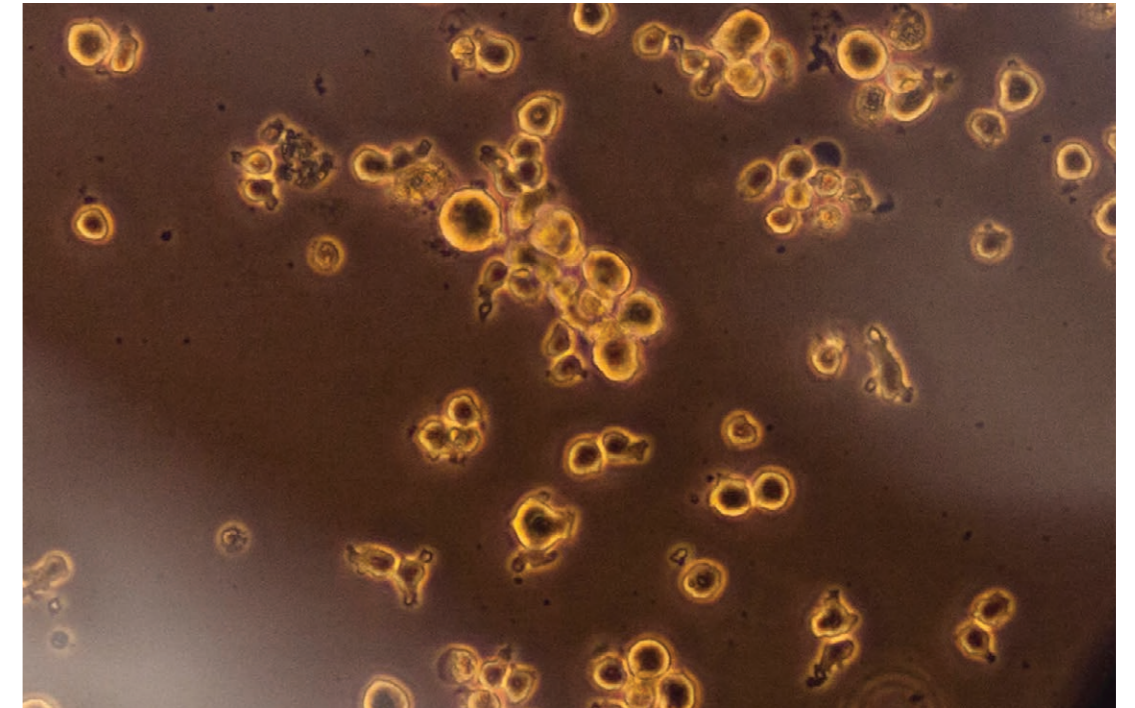
1.0 Introduction

This document forms part of the Non Material Amendment Application submitted on behalf of the Great Ormond Street Hospital Children's Charity (GOSHCC) to describe the proposed changes to the design of the Zayed Centre for Research into Rare Disease in Children as approved under planning application ref 2014/6068/P on 10th June 2015.

Following the grant of the planning permission, the Project Team has been developing the detailed design scheme in collaboration with the main contractor, Skanska. The proposed changes are in response to a number of factors including:

- Technical development of details
- Revised technical requirements for plant space
- Further assessment of maintenance issues
- Re-assessment of user requirements

These proposed changes are considered to be de minimus in nature and will not alter the design principles established by the consented scheme in terms of scale and massing, appearance, architectural quality and materials. They are described in detail on the following pages and revised planning drawings are submitted with this application.





Approved Design - Illustrative view of the Zayed Centre for Research into Rare Disease in Children

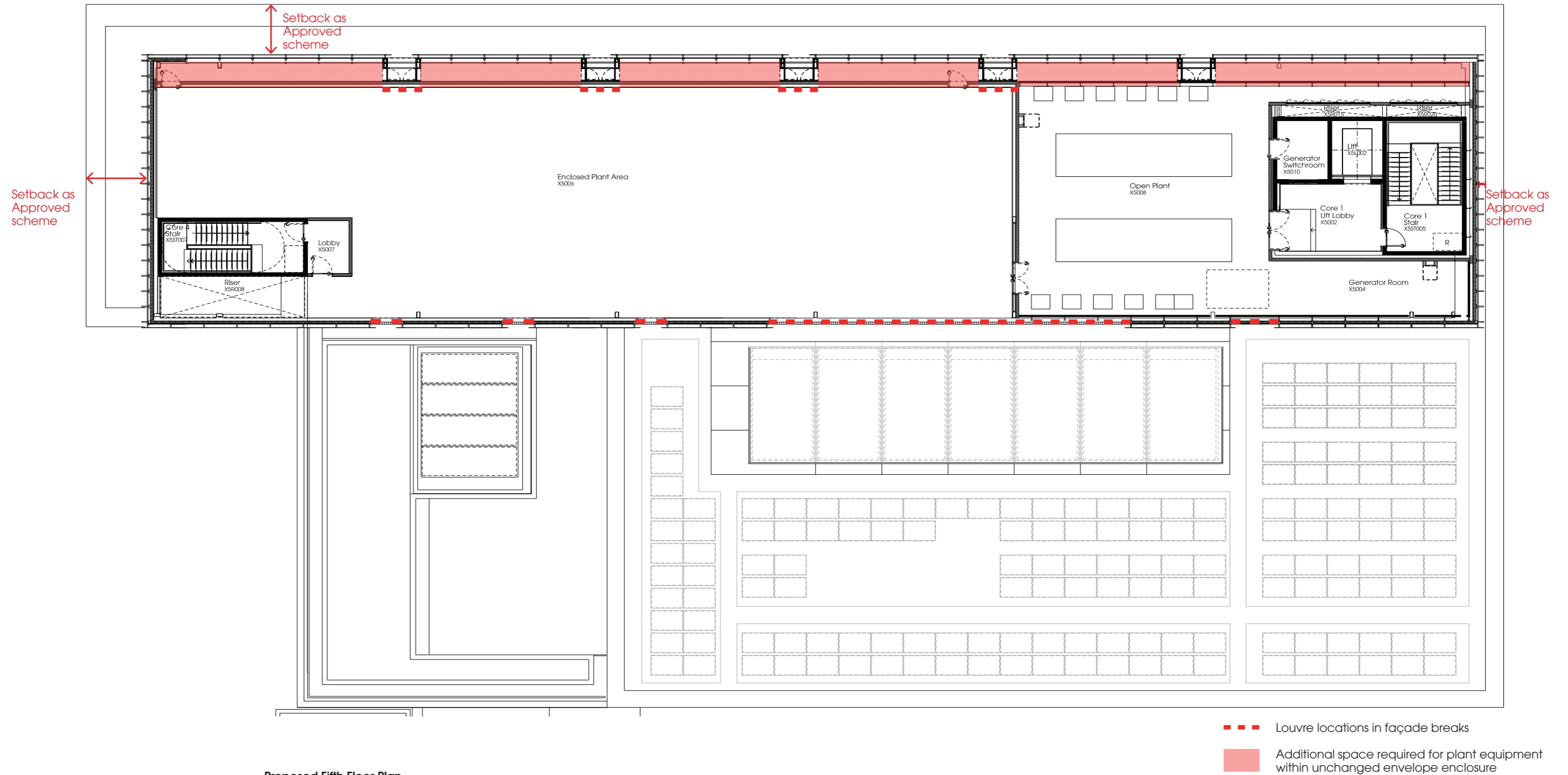
2.0 Design of Fourth and Fifth floor façades

Proposed Changes

During the detailed design stages, it has become apparent that the plant equipment on the fifth floor serving the Good Manufacturing Facility (GMP) would not fit in the space provided while maintaining minimum requirements for access, maintenance and replacement (under the CDM Regulations). To overcome this, it is proposed to increase the plant area by using the open space along the north elevation. The overall envelope of the fourth and fifth floors will remain unchanged from the consented planning scheme, keeping the same setbacks from the north, east and west elevations.

The increase in space will be achieved by moving the internal metal clad wall out to sit behind the glass screen and omitting the previously proposed mesh layer. The glass screen will incorporate a fritted pattern to maintain the impression of a layered façade.

The five breaks on the north elevation will be maintained with the same depth as in the approved scheme and will be lined in matching pale bronze metalwork used on the east and west elevations. It is proposed that the back face of these breaks will incorporate extract louvres; however, these will not be visible from street level on Guilford Street. The louvres will have a frameless appearance, matching the design elsewhere.



Proposed Fifth Floor Plan