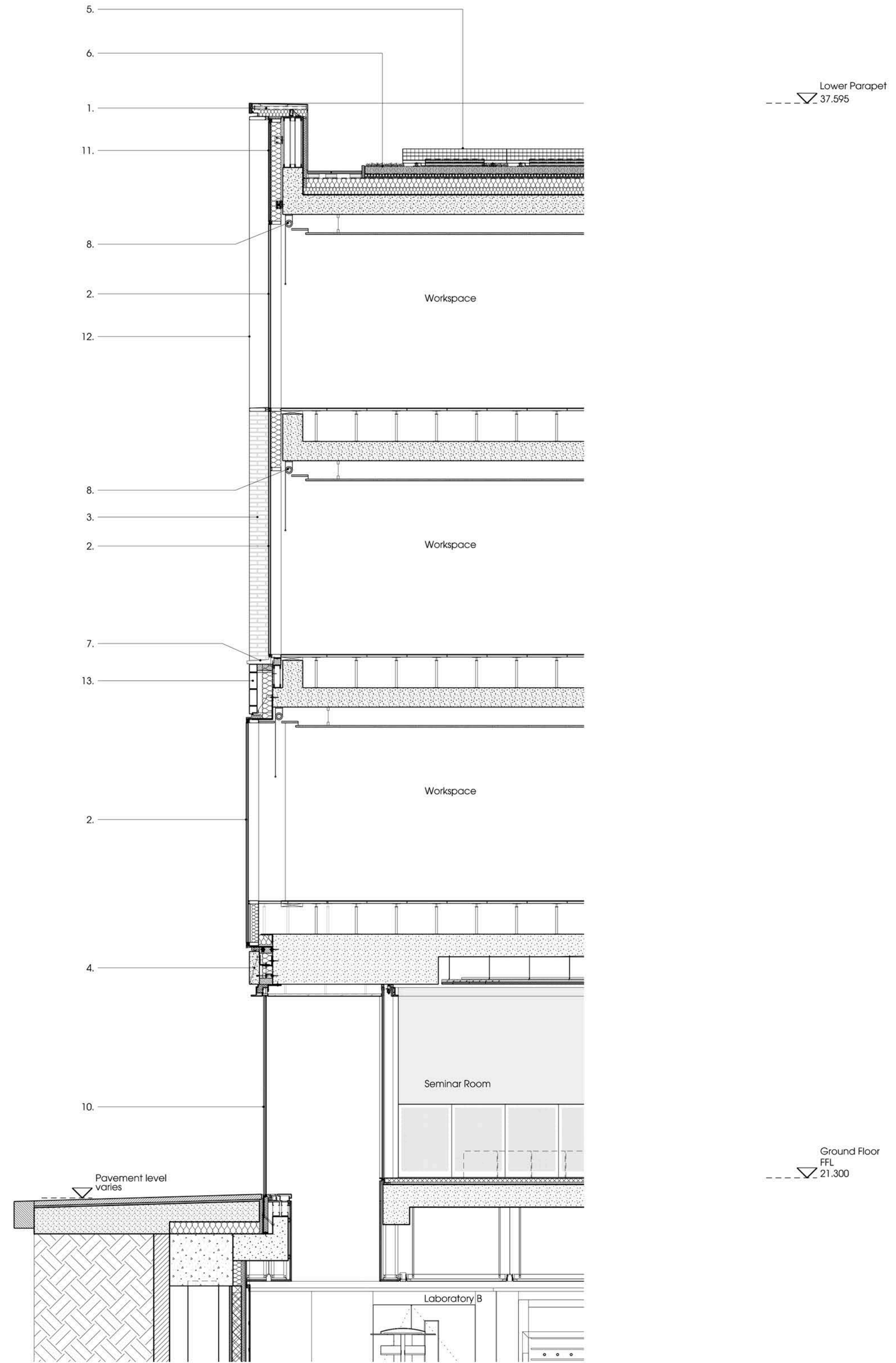




01 East Elevation Detail  
PL\_301 Millman Street



02 Section AA  
PL\_301

**Notes**

Contractor to check all dimensions on site. Do not scale from this drawing. Stanton Williams to be advised of any variation between the drawings and site conditions.

© Stanton Williams. All rights described in Chapter IV of the Copyright, Designers and Patents Act 1998 have been asserted.

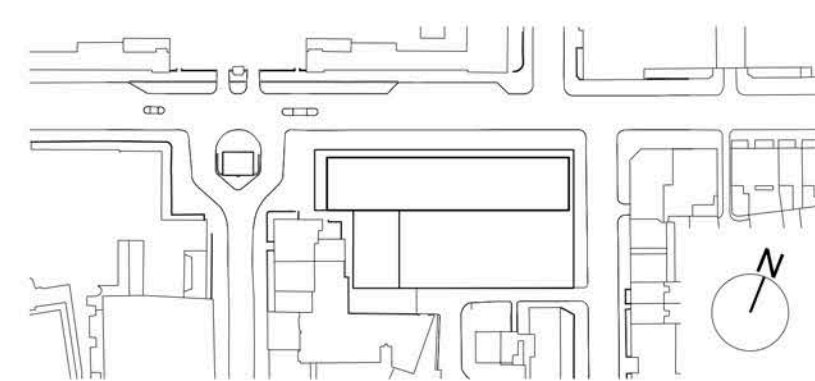
To be read in conjunction with the specification and all relevant drawings.

1. Terracotta coping piece
2. Metal-framed fixed frit pattern to workspaces. Glazing to incorporate ceramic frit pattern to minimise overlooking and solar gains
3. External facing brickwork
4. GRC cladding panel
5. Photovoltaic panels
6. Brown roof
7. Metal cill
8. Automated internal blinds
9. Metal cladding incorporating fire escape door
10. Curtain walling incorporating metal deflection head detail
11. Metal fascia panel
12. Metal lining to window reveal
13. External facing brickwork- soldier course
14. Dry riser inlet

**Revision Date Description**

Revision	Date	Description
0	05.09.14	Issued for Planning
1	27.01.17	Issued for NMA

**Location**



Stanton Williams  
36 Graham Street  
London N1 8GJ  
Phone +44 (0)20 7880 6400  
Email 464@stantonwilliams.com  
www.stantonwilliams.com



**Project**  
Zayed Centre for Research  
into Rare Disease in Children

**Drawing Title**  
Typical  
Bay Study  
East Elevation

Date	Scale @ A1(A3)	Status	Project No.	Drawing No.	Revision
05.09.14	1:50 (1:100)	Planning	464	PL_301	1
Drawn	Checked	Approved			
LO	KI	GH			