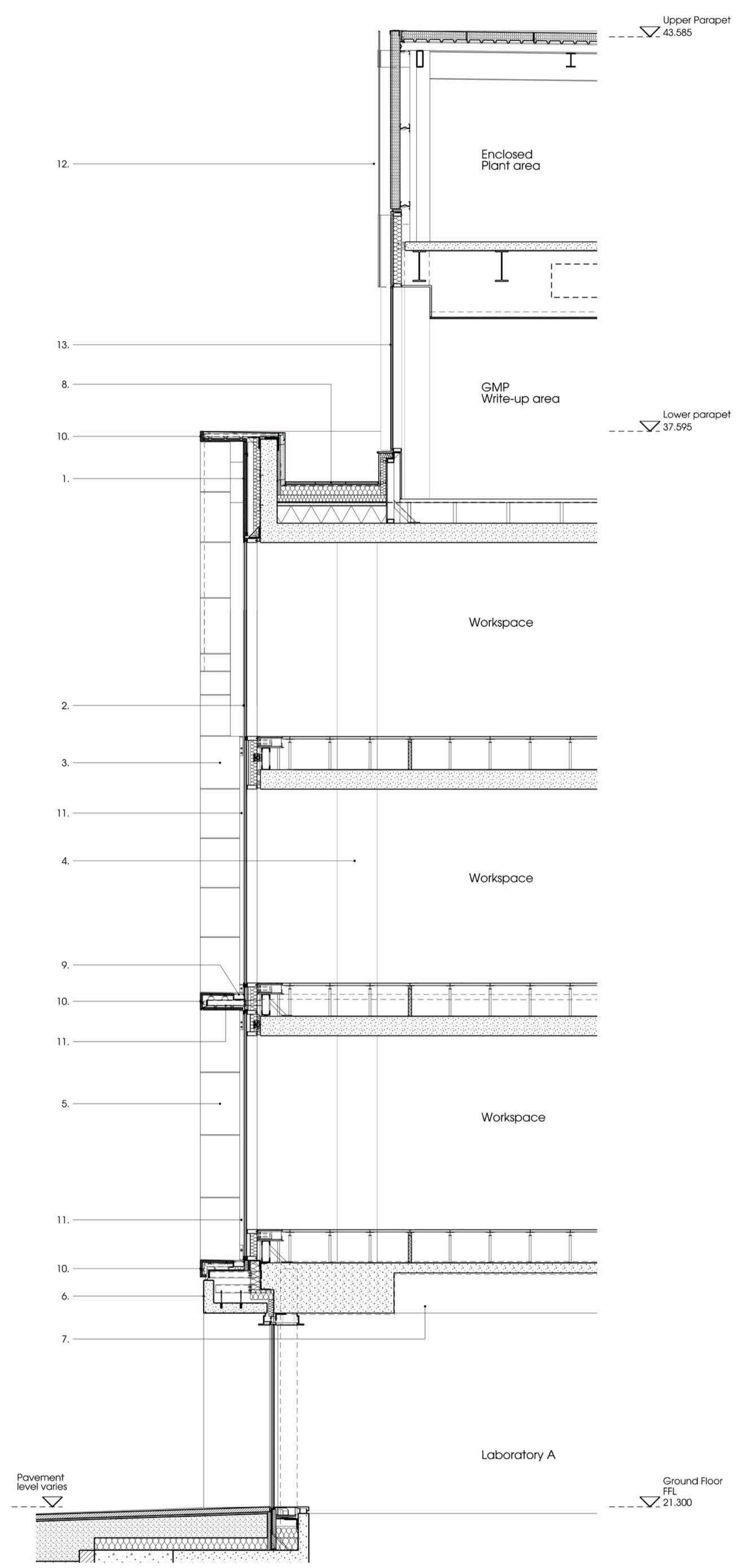


01 North Elevation Detail
PL_300 | Guilford Street

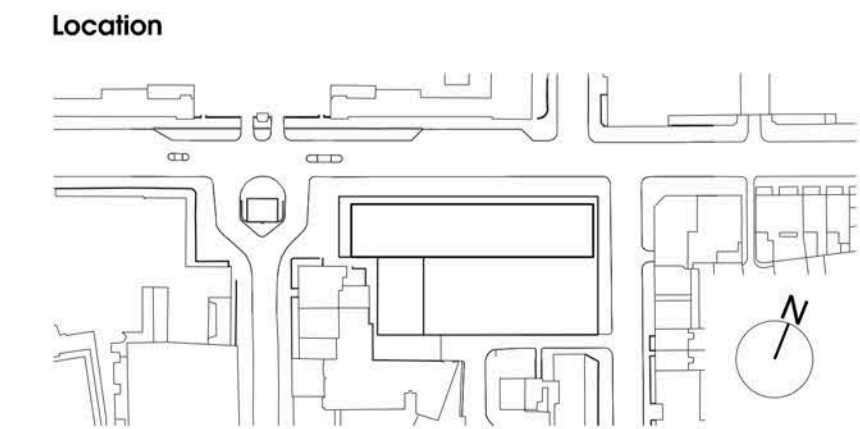


02 Section AA
PL_300

Notes
Contractor to check all dimensions on site. Do not scale from this drawing. Stanton Williams to be advised of any variation between the drawings and site conditions.
© Stanton Williams. All rights described in Chapter IV of the Copyright, Designs and Patents Act 1998 have been asserted.
To be read in conjunction with the specification and all relevant drawings.

1. Terracotta fascia panel
2. Double height curtain walling
3. Double height terracotta fin
4. Structure in background
5. Single storey high terracotta fin
6. GRC fascia panel
7. Acoustic panel within concrete coffer slab
8. External paving to roof
9. Drainage channel
10. Terracotta cladding to form cill and 'transom'
11. Steel support structure for terracotta cladding
12. Glass rainscreen incorporating metal panels behind
13. Curtain walling with projecting external mullions.

Revision	Date	Description
0	05.09.14	Issued for Planning
1	22.12.14	Issued for Planning Addendum
2	27.01.17	Issued for NMA



Stanton Williams
36 Graham Street
London N1 8GJ
Phone +44 (0)20 7880 4400
Email 464@stantonwilliams.com
www.stantonwilliams.com



Project
Zayed Centre for Research
into Rare Disease in Children

Drawing Title
Typical Bay Study
North Elevation through Workspaces

Date	Scale @ A1(A3)	Status
05.09.2014	1:50 (1:100)	Planning

Drawn	Checked	Approved
LO	KI	GH

Project No.	Drawing No.	Revision
464	PL_300	2