

**Notes**

Contractor to check all dimensions on site. Do not scale from this drawing. Stanton Williams to be advised of any variation between the drawings and site conditions.

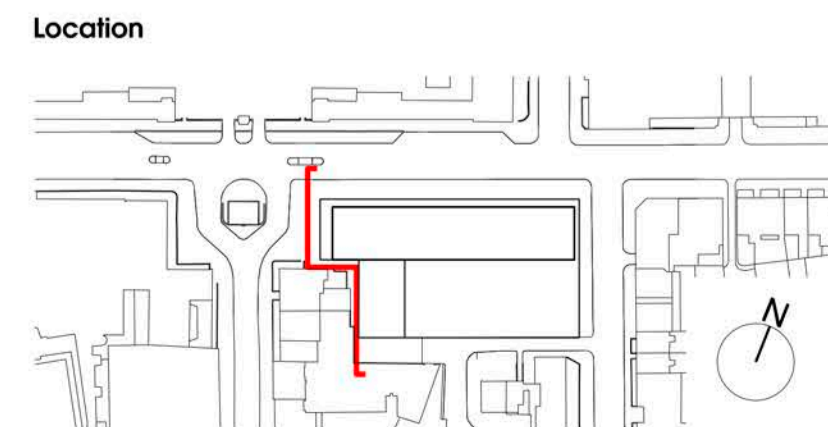
© Stanton Williams. All rights described in Chapter IV of the Copyright, Designs and Patents Act 1998 have been asserted.

To be read in conjunction with the specification and all relevant drawings.

**Key:**

1. External facing brickwork
2. GRC fascia
3. Terracotta cladding
4. Terracotta cladding
5. Curtain walling
6. Obscure glazing flush with brickwork
7. Recessed metal framed glazing
8. Metal cladding
9. Metal louvers
10. Metal cladding with projecting metal fins

Revision	Date	Description
0	05.09.14	Issued for Planning
1	22.12.14	Issued for Planning Addendum
2	27.01.17	Issued for NMA



Stanton Williams  
36 Graham Street  
London N1 8GJ  
Phone +44 (0)20 7880 6400  
Email 464@stantonwilliams.com  
www.stantonwilliams.com

**STANTON WILLIAMS**

**Project**  
Zayed Centre for Research into Rare Disease in Children

**Drawing Title**  
Proposed General Arrangement West Elevation (terraces removed)

Date	Scale @ A1 (A3)	Status	Project No.	Drawing No.	Revision
05.09.2014	1:100 (1:200)	Planning	464	PL_224	2
Drawn LO	Checked KI	Approved GH			