



**Notes**

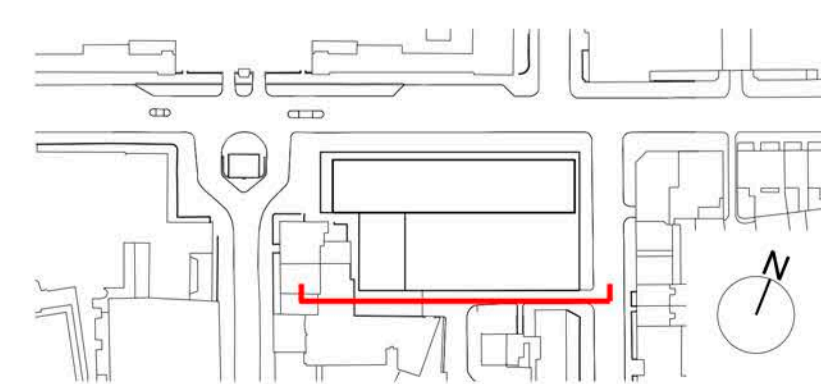
Contractor to check all dimensions on site. Do not scale from this drawing. Stanton Williams to be advised of any variation between the drawings and site conditions.  
 © Stanton Williams. All rights described in Chapter IV of the Copyright, Designers and Patents Act 1988 have been asserted.  
 To be read in conjunction with the specification and all relevant drawings.

**Key:**

- 1. External facing brickwork
- 2. GRC fascia
- 3. Terracotta cladding
- 4. Glass rainscreen
- 5. Glazing flush with brickwork
- 6. Recessed metal framed glazing
- 7. Metal cladding
- 8. Metal louvres

| Revision | Date     | Description                  |
|----------|----------|------------------------------|
| 0        | 05.09.14 | Issued for Planning          |
| 1        | 22.12.14 | Issued for Planning Addendum |
| 2        | 27.01.17 | Issued for NMA               |

**Location**



Stanton Williams  
 36 Graham Street  
 London N1 8GJ  
 Phone +44 (0)20 7880 6400  
 Email 464@stantonwilliams.com  
 www.stantonwilliams.com

**STANTON WILLIAMS**

**Project**  
 Zayed Centre for Research  
 into Rare Disease in Children

**Drawing Title**  
 Proposed  
 General Arrangement  
 South Elevation

| Date     | Scale @ A1 (A3) | Status   | Project No. | Drawing No. | Revision |
|----------|-----------------|----------|-------------|-------------|----------|
| 05.09.14 | 1:100 (1:200)   | Planning | 464         | PL_222      | 2        |
| Drawn    | Checked         | Approved |             |             |          |
| LO       | KI              | GH       |             |             |          |