



Notes

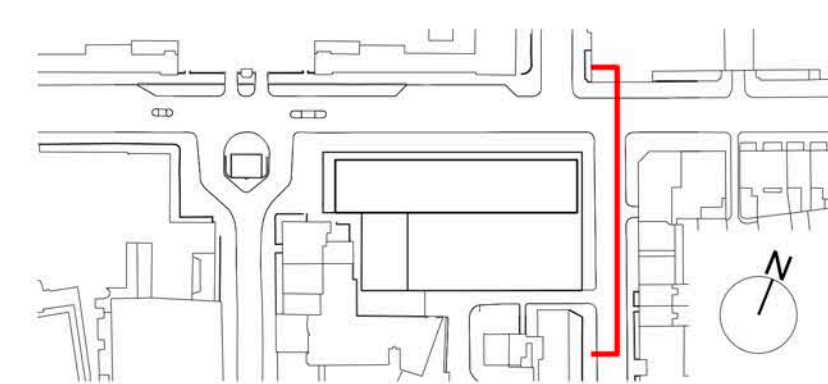
Contractor to check all dimensions on site. Do not scale from this drawing. Stanton Williams to be advised of any variation between the drawings and site conditions.
 © Stanton Williams. All rights described in Chapter IV of the Copyright, Designers and Patents Act 1998 have been asserted.
 To be read in conjunction with the specification and all relevant drawings.

Key:

- 1. External facing brickwork
- 2. GRC fascia
- 3. Terracotta cladding
- 4. Terracotta fins
- 5. Curtain walling
- 6. Glazing flush with brickwork
- 7. Recessed metal framed glazing
- 8. Metal cladding
- 9. Metal cladding with projecting metal fins
- 10. Metal louvers

Revision	Date	Description
0	05.09.14	Issued for Planning
1	22.12.14	Issued for Planning Addendum
2	27.01.17	Issued for NMA

Location



Stanton Williams
 36 Graham Street
 London N1 8GJ
 Phone +44 (0)20 7880 6400
 Email 464@stantonwilliams.com
 www.stantonwilliams.com

STANTON WILLIAMS

Project
 Zayed Centre for Research
 into Rare Disease in Children

Drawing Title
 Proposed
 General Arrangement
 East Elevation

Date	Scale @ A1 (A3)	Status	Project No.	Drawing No.	Revision
05.09.2014	1:100 (1:200)	Planning	464	PL_221	2
Drawn	Checked	Approved			
LO	KI	GH			